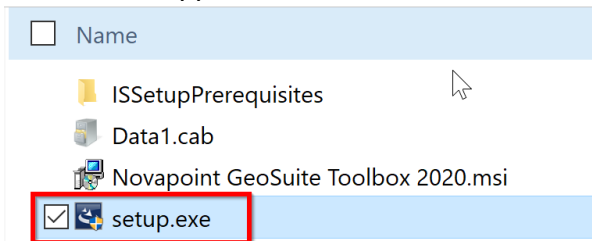


NOVAPOINT GEOSUITE

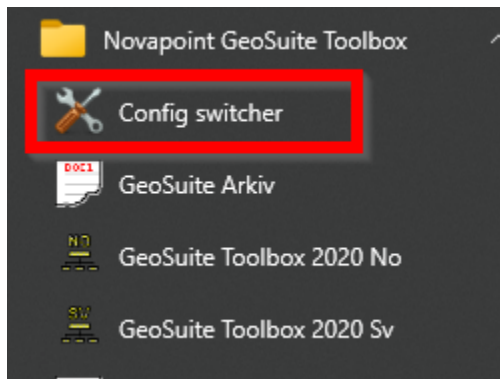
Getting Started



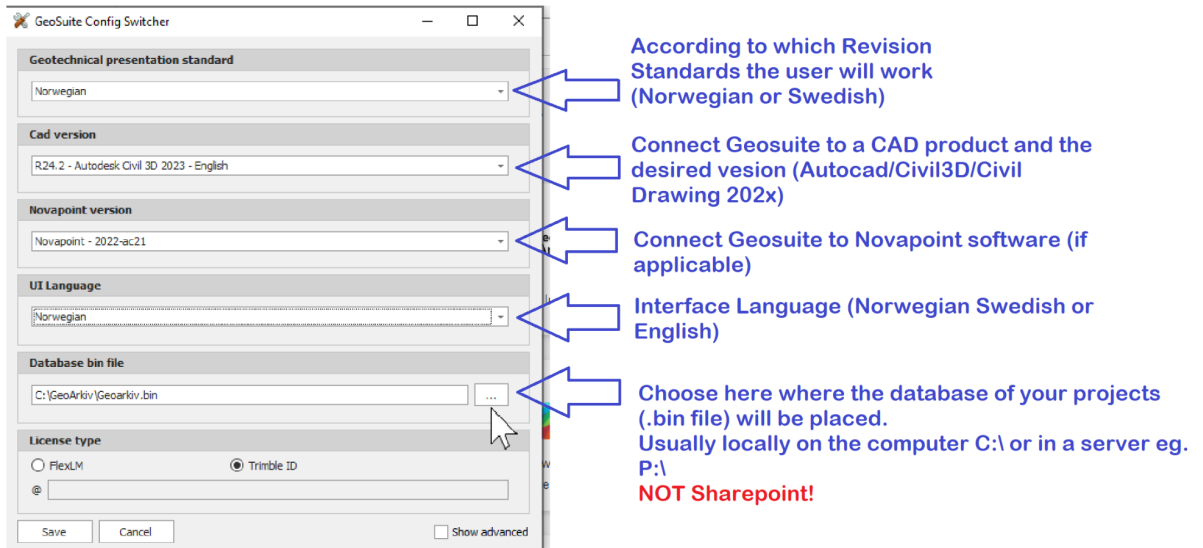
1. Download the software from Trimble website (not from my products homepage).
2. Extract the files in the folder
3. From the unzipped folder, double click to run the setup.exe file



4. Follow the instructions as seen below, after you have accepted the terms and Conditions in the license agreement.
5. Choose the language for the software, Swedish, Norwegian or both. Click Next and let the program finish the installation.
6. Finish
7. Go to the Start Menu of your computer and the Configuration Switcher for Novapoint Geosuite.



- Configuration Switcher is used to set the right settings for Novapoint Geosuite regarding the language, the revision standards, the connection to/with other software, licensing and placement of the database for your projects (.bin file).



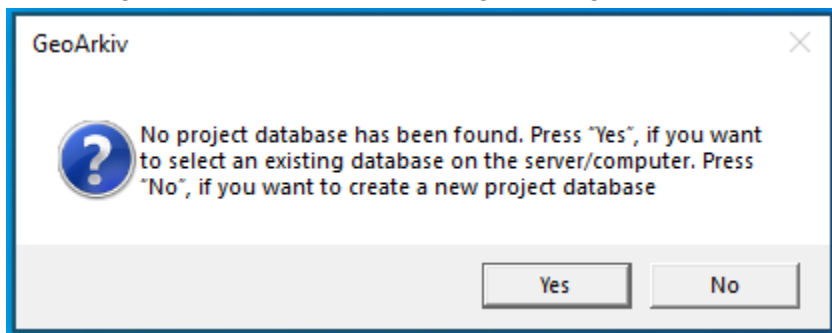
- Choose your license type.
 - FlexLM for Network Licenses, @ (here you write the path to the server with the licences).
 - Trimble ID for Named User licenses (a pop-up window will appear later and you log in with your Trimble credentials)

If unsure ask your IT department or contact civil-support@trimble.com

- Save
- Start the Novapoint Geosuite program!

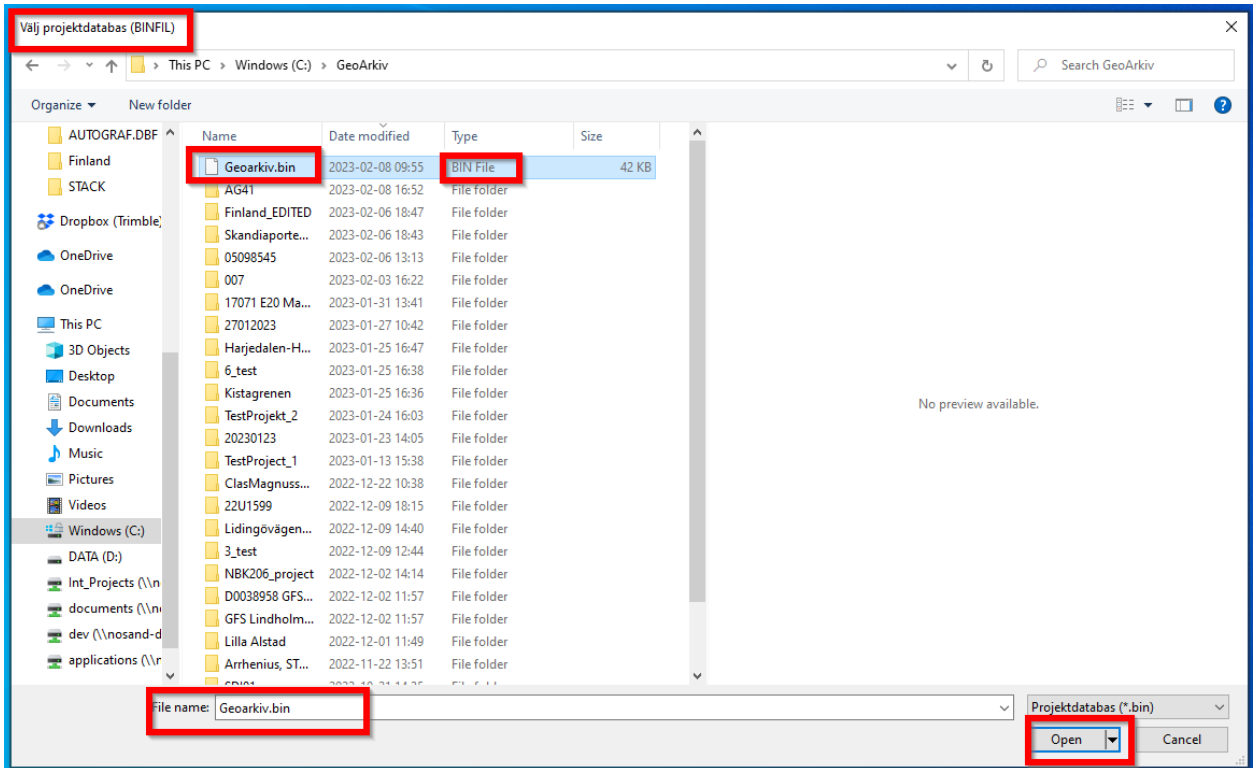


- If the program starts and the following message appears



Yes: If your company/department already has a database file (.bin file) for the projects and you want to connect to it (see figure below).

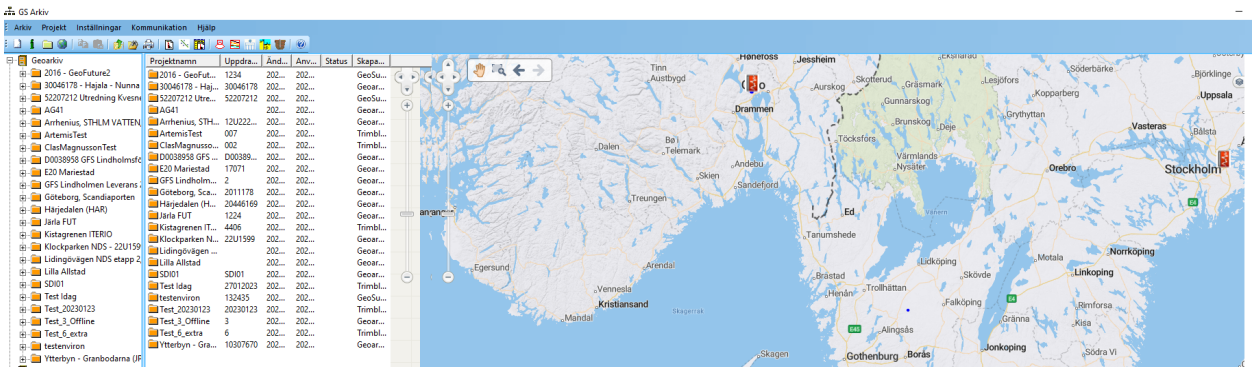
No: If you will work on your own database (.bin file) and/or create a new empty database for your projects. The program by default will create this database in the C:/ if not changed by the user.



13. Once you open the Novapoint Geosuite program, GS Arkiv module will appear.

-If you have connected to a database with existing projects, these will appear in a list as seen below.

-If you have created a new empty database this list will be empty /blank. You can either create a new project or import the data (.dbs file) from an existing one.



Good Luck!