



2018-2019 DCE Annual Report

Established in 1979, Diabetes Care and Education (DCE) is one of the largest professional dietetic practice groups within the Academy of Nutrition and Dietetics. Coming in at almost 40 years and still going strong!

Message from the Chair

Alyce Thomas, RDN



The mission and vision of any organization is to provide direction and to help keep its members focused. 2018-2019 has been a busy year for DCE. In this annual report, you'll see what we've been doing and what we envision in the future.

Mission: empowering our members to be leaders in food, nutrition, diabetes care and prevention.

How does DCE support its Mission?

One of the ways DCE empowers its members is through the financial support of diabetes-related research projects. These projects include: the ENHANCED project, in which registered dietitians-nutritionists (RDNs) initiated and titrated medication therapies for blood glucose, blood pressure, and lipids, the Karen Goldstein Memorial Diabetes Outcomes grant, the Academy's Dietetics Practice Based Research Network and the Evidence Analysis Library Juvenile Diabetes

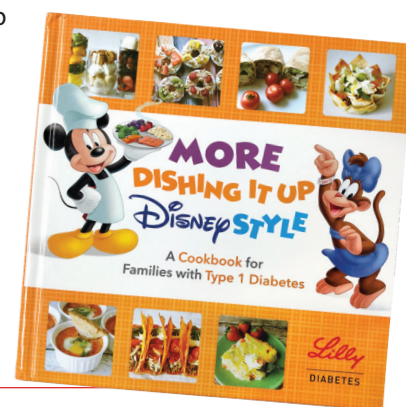
Project. DCE was also instrumental in the development of the training modules for the Academy's Certificate of Training in Diabetes.

Vision: optimizing the health of people impacted by diabetes using food, nutrition and self- management.

How does DCE support its Vision?

Diabetes educational handouts have been developed and will be ready for distribution in 2020. The revised Cultural Food Practices book will be published next year. A pediatric diabetes toolkit is also in the early stages of development.

DCE continues to collaborate with other diabetes organizations including AADE, ADA, AACE (the American Association of Clinical Endocrinologists), the National Diabetes Volunteer Leadership Council, and Children with Diabetes. DCE has partnered with Disney to revise a cookbook for families with Type 1 Diabetes. We are looking forward to establishing new partnerships in the future.



We are... A trusted voice for persons with diabetes when it comes to nutrition, physical activity, self-management, technology, and day-to-day diabetes care, education and prevention.

Message from the Incoming Chair

Constance Brown, MEd, RD, CDE, CDN



Did you know our DCE Chair Elect kicked off AADE#19 by singing the National Anthem?

There's been a lot of work behind the scenes as we look to our future. In October 2018 prior to the FNCE®, a new mission and vision for DCE was established. Then, the strategic plan began to take shape with input from

the DCE membership survey and the establishment of a strategic planning task force. After months of conference calls and under the guidance of Carrie Kiley, MBA, Senior Manager – Affiliate and Practice Leader relations, strategies and goals were finalized in the spring of 2019 at the Leadership retreat.

Strategies

- Provide the tools, resources, and support to all RDNs and NDTRs to empower them to become competent providers and leaders in diabetes nutrition
- Work to create and increase confidence in RDNs and NDTRs to assert their knowledge and expertise when working with all people affected by diabetes
- Develop volunteers to be leaders within the organization and the profession in order to advance RDNs and NDTRs as the

nutrition and dietetics experts when treating pre-diabetes, diabetes, and complications associated with diabetes

- Focus on collaborative partnerships to further the mission and vision of DCE through community engagement, public policy and legislative initiatives, clinical care, and research

Goals

1. Create an environment welcoming and supportive of new volunteers. This is achieved through consistent volunteer recruitment and support.
2. Increase the recognition of DCE and its members outside of the Academy and profession. This is achieved through a unified branding and marketing plan targeted at multi levels utilizing all resources available to DCE.
3. Empower DCE to assist all RDs and DTRs in treating diabetes, not just those who specialize in diabetes care and education, which will result in financial stability through increased membership dues and sponsorship.
4. Create a unified brand for DCE leveraging the new mission, vision, strategic plan, and, potentially, name which allows for the evaluation of existing and potentially new programs for DCE through informed decision making.



STRATEGIC PLANNING TASKFORCE MEMBERS – THANKS!

Alyce Thomas, RDN – DCE Chair

Mary Angela Niester, MPH, RD – DCE Treasurer

Donna Plyer, MEd, RD, LDN, CDE, CHC – DCE Policy & Advocacy Leader

Constance Brown-Riggs, MEd, RD, CDE, CDN – DCE Chair-elect

Anna Parker, DCN, MS, RD, CDE – DCE Professional Development Chair

Daisy Seremba, MS, RD, LD, CDE – DCE Membership Chair



Membership

Membership Committee Chair: Daisy Seremba, MS, RD, LD, CDE



5,800
Members Strong



93%
Registered Dietitian
Nutritionists (RDNs) and
Nutrition and Dietetic
Technicians, Registered
(NDTRs)



300
Student Members



>50%
Certified Diabetes
Educators (CDEs) or Board
Certified in Advanced
Diabetes Management

DCE was an exhibitor at the 2018 AADE annual meeting in Baltimore, Maryland and participated in the Member Showcase at the 2018 Food and Nutrition Conference and Exhibition (FNCE®), in Washington, DC. Members provided educational presentations, assisted at our exhibitor booths and distributed patient resources. For the first time in our history, DCE was an exhibitor at Michigan's Dietetic Association annual meeting. Participation at a state meeting provided greater exposure of DCE to other Academy members

who are not members of DCE. We look forward to possibly participating in more annual meetings in the future.

As we aim to grow our membership, we want to engage more members, especially student members. We revised our student liaison position description and will begin in the next year with marketing and recruiting to fill this position.

We encourage you to learn more about DCE and opportunities to get involved. Please visit www.dce.org for more information.

Publications and Communications

Publications Committee Chair: Kathy Warwick, LD, RD, CDE

With the generous support of our industry partners, members were offered free webinars, three issues of *On The Cutting Edge*, our consistently highly rated publication providing four CPEUs in each issue, and three issues of *newsFLASH*. The editor of *newsFLASH*, Britt Rotberg, has added new features to this informative publication and we are exploring the possibility of offering CPEUs for *newsFLASH*.

On the Cutting Edge themes for 2018-2019

Editor: Janice MacLeod, MA, RD, LDN, CDE, FAADE

Associate Editor: Sarah Williams, MS, RD, CDE

OTCE Volume 40, No 2 Navigating Care for the Older Adults with Diabetes

OTCE Volume 39, No 6 Addressing the Mental Health and Psychosocial Barriers to Self-Care for People with diabetes

OTCE Volume 39, No 4 Insulin Dynamics and Titration

newsFLASH

Editor, Britt Rotberg, MS, RDN, LD, CDE, BC-ADM

The importance of quality diabetes care and education delivered by DCE members only continues to grow, with **>9.4%** of Americans having diabetes and **84.1 million** American adults living with prediabetes.

Professional Development

Professional Development Chair: Ana Parker, DCN, MS, RD, CDE

DCE was able to offer members six webinars free of charge in 2018-2019. Webinars are worth 1 CPEU and are available to view on demand. Webinars are an easy way to stay up to date on the latest in diabetes care and are a valuable resource to our members.

Topics in 2018-2019 included:

- Managing Diabetes Using a Plant Based Approach
- Dietary Fats and Cardiovascular Health in Diabetes: What Does the Science Say?
- Bridging the Cultural Gap in the Mexican American Population: A Focused Discussion for Glycemic Improvement
- Obesity: Multi-Faceted and Multi-Disciplinary Strategies for Managing it with Diabetes
- The Gut Glucose Connection—A Therapeutic Target for Improved Diabetes Outcomes



The DCE website was updated monthly with current journal articles for members in the area of pre-diabetes, type 1 diabetes, type 2 diabetes and gestational diabetes. The technology section of the DCE website was updated with information on oral medications, insulin, incretin mimetics, insulin pumps, continuous glucose monitors and blood glucose meters. Members were also kept up to date on industry news and recalls.

DCE Public Policy

Public Policy: Donna Plyer, LDN, CDE



A word from Donna Plyer: Of all the liberties guaranteed by the First Amendment to the United States Constitution, the most underrated by far is the one that gives us the right to complain to our elected officials. Let your voice be heard! Respond to the Action Alerts!

Spanning the end of the 115th Congress and the first five months of the 116th Congress, the Diabetes Care and Education (DCE) Practice Group Policy & Advocacy team supported the Academy of Nutrition and Dietetics advocacy plan.

Bills championed by DCE this year were:

- 1- The Farm Bill
- 2- The Treat & Reduce Obesity Act (TROA)
- 3- Expanding Access to Diabetes Self-Management Training Act
- 4- Preventative Health Savings Act

None of these bills passed in 2018. However, most were reintroduced in both the Senate and Congress as bipartisan bills in 2019.

Some other highlights:

June 2018, we spearheaded an action alert encouraging passage of the Farm Bill with the language encouraging the

continuation of SNAP, funding for SNAP education and a boost in funding for healthy food incentives. Shortly after this, we submitted comments to CMS about their proposed rules for the Physician Fee Schedule in 2019. This was one of many comment opportunities in which we participated during the year.

DCE representatives attended the Diabetes Prevention and Treatment advocacy day in Washington, DC and met with congressional representatives to further diabetes legislation. In October, 2018, the DCE Reimbursement Representative and Policy & Advocacy Leader attended the Public Policy workshop held in Washington, DC. According to Ruth Hanson, RDN, CDE, who also attended the public policy workshop with a DCE legislative stipend, "Meeting with our congressional legislators and senators, we advocated for the role of the RDN in malnutrition prevention and treatment as well as prevention of chronic diseases such as diabetes and cancer. In addition, we discussed how RDN interventions save money and prevent illness."

2018-2019 Reimbursement and Payment

Reimbursement Chair: Michele Chynoweth, RD, CDE

It's been a busy year for the Reimbursement and Payment Committee. Be sure to watch the electronic mailing lists for captivating up-to-date information from MHC@dce!

We've focused on 5 areas in the last year.

1. Promote and support the online Academy Resources including: Developing and implementing medical nutrition therapy services, diabetes self-management training/ education/support, MDPP (Medicare Diabetes Prevention Program) and recent expanded CPT codes for billing series in diabetes management
2. Advocacy – our Committee partners with our DCE Public Policy Committee to expand services for Medicare beneficiaries by providing content experts, case studies and grass roots participation at the Congressional district offices. We also connect our affiliate reimbursement representatives with their state initiatives for diabetes, obesity and pre-diabetes services.
3. Assist DCE members in real time via EML by answering queries and directing members to the Academy, CMS and others' online resources. We publicized an archived CME Webinar for physicians and nonphysician providers titled: "Primary Care Plus- How an RDN Adds Value to Your Practice." DCE members are encouraged to check out the Academy Eatright store which has tool kits, nutrition business and office practice resources.
4. Encouraged DCE members to participate in the Academy's Malnutrition Quality improvement initiative (MQii).
5. Provided Expert Resource for the Academy in Development of Academy Comments and Positions (with NPSC and Policy



Michele Chynoweth RD, CDE, meeting with her Congressman, Kevin McCarthy.

advocacy leader) for the following: Dietary Guideline committee member recommendations, Healthy People 2030 recruitment suggestions, Quality Payment Program (QPP), Merit-based Incentive Payment System (MIPS), Revision to payment policy under Medicare Part B Physician Fee Schedule, Proposed regulation for remote monitoring, Medicare Advantage Provider Network Requirements.



2018-2019 DCE Award and Stipend Recipients

At FNCE® 2018, the Awards Committee proudly celebrated the following award and stipend recipients:

Diabetes Educator of the Year Award

Carol Brunzell, RDN, LD, CDE

"I am truly humbled to have received this prestigious award from my dedicated and talented colleagues at DCE. I thank my colleagues and all of the people with diabetes I have been honored to work with over the years for teaching me so much." DCE Member for 25 years.

Distinguished Service Award

Betty Krauss, RDN, CDE

Legislative Activity Award

Charlene Dorsey, MS, RDN, LMNT, CDE

Publications Award

Patricia Z. Marincic, PhD, RDN, CLE

DCE Champion Award

Victor Van Beuren, MS

Director, Book Operations – ADA Books
American Diabetes Association

Speaker Stipend Recipients

1. Amy Keywood, RD, LD, CDE
2. Joycelyn Ashby Cornthwaite, MS, RD, LD, CDE
3. Melinda Maryniuk, MEd, RD, CDE, FADA
4. Charlene Dorsey, MS, RDN, LMNT, CDE
5. Laura Andromalos, MS, RD, CD, CDE
6. Tracy Bruen, MS, RD, LDN

Education Stipend Recipients

1. Dawn Sherr, MS, RD, CDE
2. Mary Neumaier, RD
3. Wendy Castle, RD, LD, CDE
4. Deborah L. Bella, PhD, RDN, LD, CD

Legislative Stipend Recipients

1. Ruth S. Hanson, RDN, CDE
2. Babbi Hawkins, MS, RDN

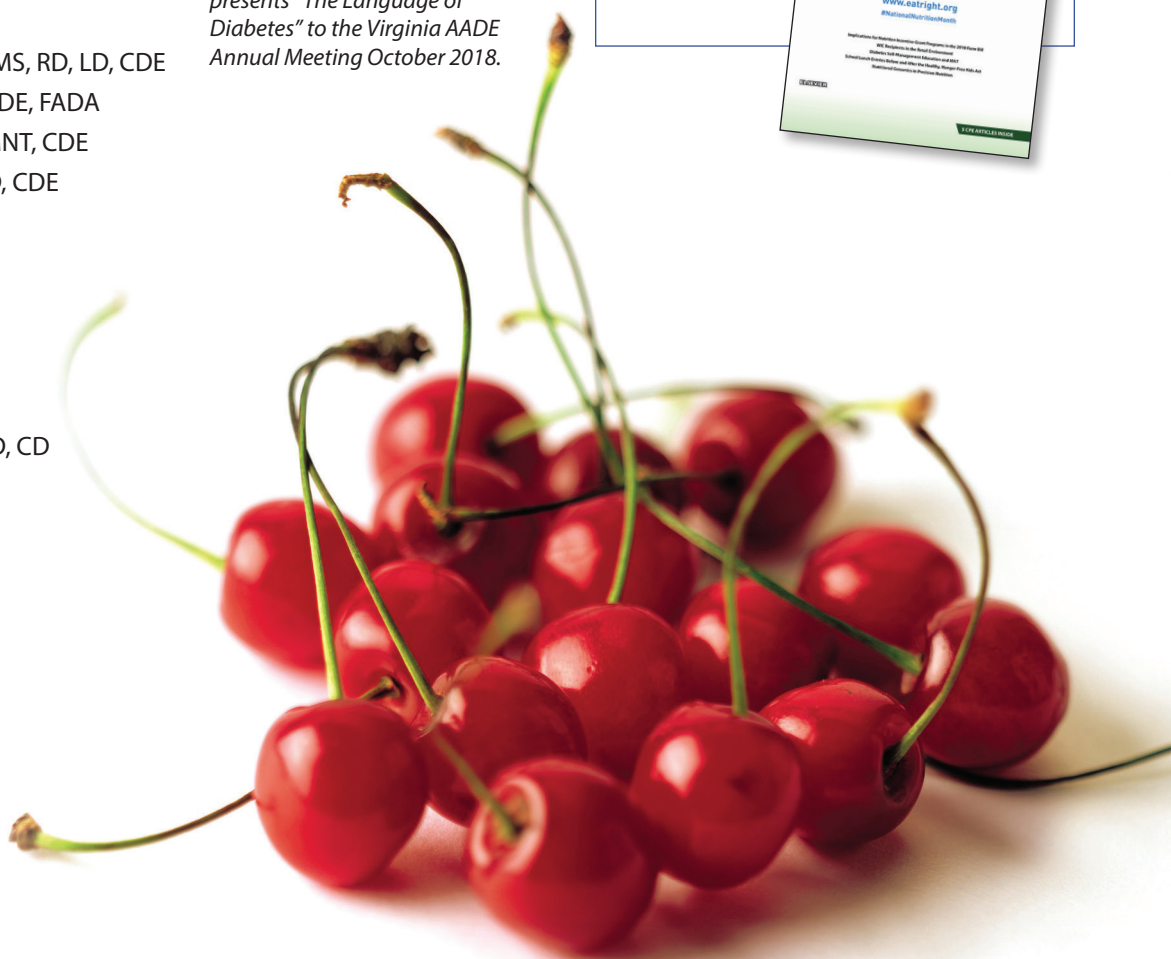
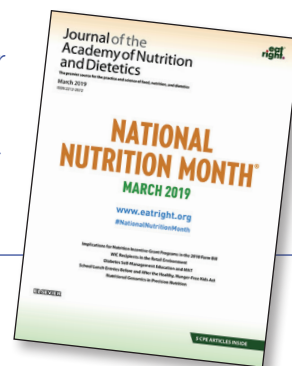


Melinda Maryniuk, MEd, RD, CDE, FADA (a speaker stipend recipient) presents "The Language of Diabetes" to the Virginia AADE Annual Meeting October 2018.

Publication Award Given to Patricia Z. Marincic, PhD, RDN

Diabetes Self-Management Education and Medical Nutrition Therapy: A Multisite Study Documenting the Efficacy of Registered Dietitian Nutritionist Interventions in the Management of Glycemic Control and Diabetic Dyslipidemia through Retrospective Chart Review

J Acad Nutr Diet. 2019;
119(3):449-463.



2019-2020 DCE Corporate Sponsors

DCE works with a variety of industry sponsors whose business practices align with our mission and vision. Sponsor funding enables DCE to provide important benefits that support the practice of our members.



Cassie Verdi, MPH, RD,
DCE, Manager, DCE
Corporate Relations

This year, DCE's leadership partnered with the Academy of Nutrition and Dietetics to hire a dedicated Manager of Corporate Relations. The Manager of Corporate Relations serves as the primary industry liaison and is responsible for maintaining and strengthening DCE's sponsorship program. In spring 2019, the DCE prospectus received a major update and was professionally designed for the first time. DCE is also working with the new manager to create and launch new sponsorship offerings

including a recipe contest, digital influencer mailing, and online self-study modules. These activities will bring new value to sponsors as well as DCE members.

We sincerely appreciate the generous support of our 2018-2019 sponsors and value their commitment to DCE!

PLATINUM SPONSORS \$25,000 or more

Lilly Diabetes

Exclusive Sponsor *newsFLASH Volume 40:5 & More Dishing It Up*
Disney Style – A Cookbook for Families with Type 1 Diabetes

GOLD SPONSORS \$15,000 to \$24,999

Sanofi

Partial Sponsor *On the Cutting Edge Volume 39:4 Insulin Titration*

SILVER SPONSORS \$5,000 to \$14,999

Abbott

FNCE® 2018 – DCE Member Reception

California Walnut Commission

E-blasts, e-Update, advertisement in *On the Cutting Edge*

Chobani

Webinar "The Gut Glucose Connection – A Therapeutic Target for Improved Diabetes Outcomes"

CinSulin

2019 Spring Leadership Retreat Dinner & 2018 Speaker Stipends

SafeNeedleDisposal.org

E-blasts & advertisement in *On the Cutting Edge*

Sunsweet Growers

E-blasts

BRONZE SPONSORS Below \$5,000

Abbott Diabetes

AADE Past Chair Breakfast

California Strawberry Commission

E-blast

DayTwo

E-blast

Good Idea Drinks

FNCE® 2018 Leadership Meeting Lunch

Actual vs. Budget Fiscal Year 2018-2019

DCE's Executive Committee continues to be fiscally responsible, holding an ample amount of funds in reserve. The following financial report reflects our success in meeting our fundraising goals while maintaining expenses.

DESCRIPTION-REVENUE	YTD ACTUAL	YTD BUDGETED
MEMBERSHIP DUES	\$175,257.00	192,860.00
MERCHANDISE SALES	\$0.00	300.00
ROYALTIES	\$1,234.00	2,000.00
GRANTS/CONTRACTS	\$73,500.00	133,000.00
MISCELLANEOUS RECEIPTS	\$0.00	1,500.00

Total Operating Revenues \$249,991.00 329,660.00

DESCRIPTION-EXPENSES	YTD ACTUAL	YTD BUDGETED
LODGING	\$37,380.00	\$40,623.00
SUBSISTENCE	\$7,230.00	\$22,446.00
TRANSPORTATION	\$18,791.00	\$47,860.00
PROFESSIONAL/CONSULTING	\$123,725.00	\$126,650.00
POSTAGE	\$17,533.00	\$19,600.00
MAILING SERVICE	\$1,811.00	\$3,300.00
OFFICE SUPPLIES	\$695.00	\$2,850.00
TELEPHONE	\$0.00	\$360.00
TELECONFERENCE EXPENSE	\$258.00	\$500.00
WEBSITE HOSTING	\$3,429.00	\$9,000.00
ADVERTISING/PROMOTION	\$1,482.00	\$4,600.00
OTHER EXPENSE	\$1,221.00	\$400.00
MEMB DUES/SEMINAR FEES	\$16,481.00	\$20,665.00
CREDIT CARD PROCESSING FEE	\$3,552.00	\$2,743.00
DONATIONS/CONTRIBUTIONS	\$25,116.00	\$25,200.00
OUTSIDE SERVICES	\$2,319.00	\$3,588.00
DONATIONS TO ADAF	\$34,650.00	\$34,000.00
HONORARIUMS/AWARDS	\$22,650.00	\$28,100.00
AUDIO VISUAL	\$4,704.00	\$2,000.00
EXPO/MEETING SERVICES	\$0.00	\$7,500.00
FOOD SERVICE	\$30,148.00	\$50,450.00
PRINTING/COPYING	\$1,969.00	\$2,050.00

Total Operating Expenses \$355,144.00 \$454,485.00

OPERATING PROFIT/(LOSS)	(-105,153)	(-124,825)
INVESTMENT INCOME	\$74,205.00	\$0.00
NET PROFIT/(LOSS)	(-30,948)	(-124,825)

Net Investment Reserves \$733,999.00

Electronic Communications

Electronic Communications Chair:

Jamie Kowatch, MS, RD, CDE

The DCE Electronic Mailing List (EML) is a popular member benefit. Members must subscribe to it. Subscribing to the EML allows members to post messages on the DCE EML which will send out email to all who are subscribed to it. These can be questions members would like to ask other members or they can be comments or answers to questions posted by others.

A quote taken from the EML after Dr. Kathy Briggs Early responded to a member's request:

"As an RD who has given thousands of volunteer hours to fellow students, interns, local, state and national organizations, but a beginner in a new position, new city and new state, I commend you, Dr. Briggs, for demonstrating the value of "the golden rule" to a complete stranger, and may each of us be reminded of the wonderful aspects and benefits of belonging to a professional association like DCE."

– Cathy Deics, RD to MD Class of 2023

The 2018-2019 year saw a big change for the DCE website, as we transitioned our website to be integrated into the Academy's online presence. We anticipate the 2019-2020 year will allow our CEUs/Webinars and other DCE products to be integrated into the AND / EatRight Store. The advantage is that everything will be found simply in one single space.

CONNECT WITH DIABETES CARE AND EDUCATION



2018-2019 Executive Committee

Chair

Alyce Thomas, RDN
DCEChair@gmail.com

Chair Elect

Constance Brown Riggs, MS, RD, CDE, CDN
DCEChairElect@gmail.com

Past Chair/Industry Relations Chair

Liz Quintana, EdD, RD, LD, CDE
DCEIndustryRelations@gmail.com

Secretary

Laura Russell, MA, RD, CDE
Lcruss58@gmail.com

Treasurer

Mary Angela Niester, MPH, RD
mniester@umich.edu

Delegate

Patricia Davidson, DCN, RDN, CDE, LDN, FAND
PDavidson@wcupa.edu

Committee Chairs

Membership Committee Chair

Daisy Seremba, MS, RD, LD, CDE
dseremba@gmail.com

Print Communications Coordinator

Kathy Warwick, RD, LD, CDE
Kathywarwick0@gmail.com

Electronic Communications Chair

Jamie Kowatch, MS, RD, CDE
jamietank@gmail.com

Professional Development Chair

Ana Parker, DC, MS, RD, CDE
parker.annarita@gmail.com

Public Policy

Donna Plyer, LDN, CDE
Donna.PlyerRDCDE@gmail.com

Nominating Committee Chair

Lisa Herzig, PhD, RD, CDE

Awards Chair

Vita Tambone, MPH, RDN, CDN, CDE