

1




CMS
CENTERS for MEDICARE & MEDICAID SERVICES

Nursing Home Visitation-COVID-19
QSO-20-39-NH




<https://www.cms.gov/files/document/qso-20-39-nh.pdf>

1



Core Principles

- Screening of all who enter the facility for signs and symptoms of COVID-19 (e.g., temperature checks, questions or observations about signs or symptoms), and denial of entry of those with signs or symptoms
- Hand hygiene (use of alcohol-based hand rub is preferred)
- Face covering or mask (covering mouth and nose)
- Social distancing at least six feet between persons
- Instructional signage throughout the facility and proper visitor education on COVID-19 signs and symptoms, infection control precautions, other applicable facility practices (e.g., use of face covering or mask, specified entries, exits and routes to designated areas, hand hygiene)



2

2

Core Principles (continued)



- Cleaning and disinfecting high frequency touched surfaces in the facility often, and designated visitation areas after each visit
- Appropriate staff use of personal protective equipment (PPE)
- Effective cohorting of residents (e.g., separate areas dedicated COVID-19 care)
- Resident and staff testing conducted as required at 42 CFR 483.80(h) (see QSO-20-38-NH)

<https://data.cms.gov/stories/s/COVID-19-Nursing-Home-Data/bkwz-xpvg/>

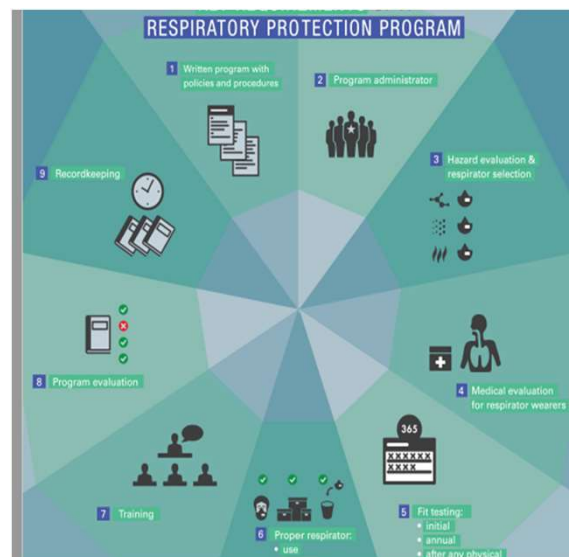


3

3

Screening

- Signs and Symptoms of COVID – 19
- Temperature checks
- Questions
- Observations
- Denial of entry



4

4

Hand Hygiene

- Hand washing
- Alcohol based hand sanitizer



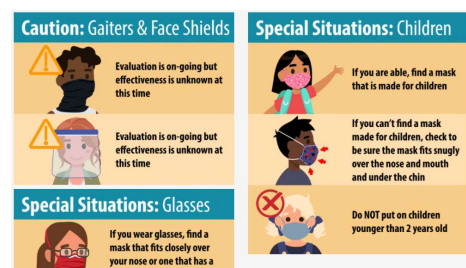
<https://www.cdc.gov/coronavirus/2019-ncov/downloads/>



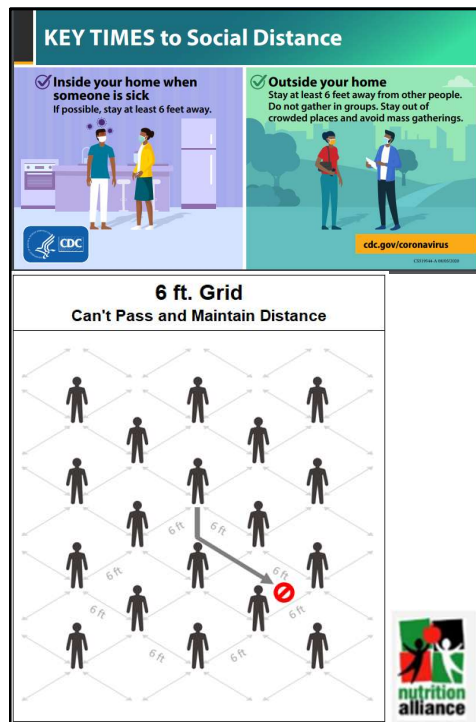
5

Face Covering or Mask

- Face Covering or Mask
 - Types of masks
 - Mouth and nose



6



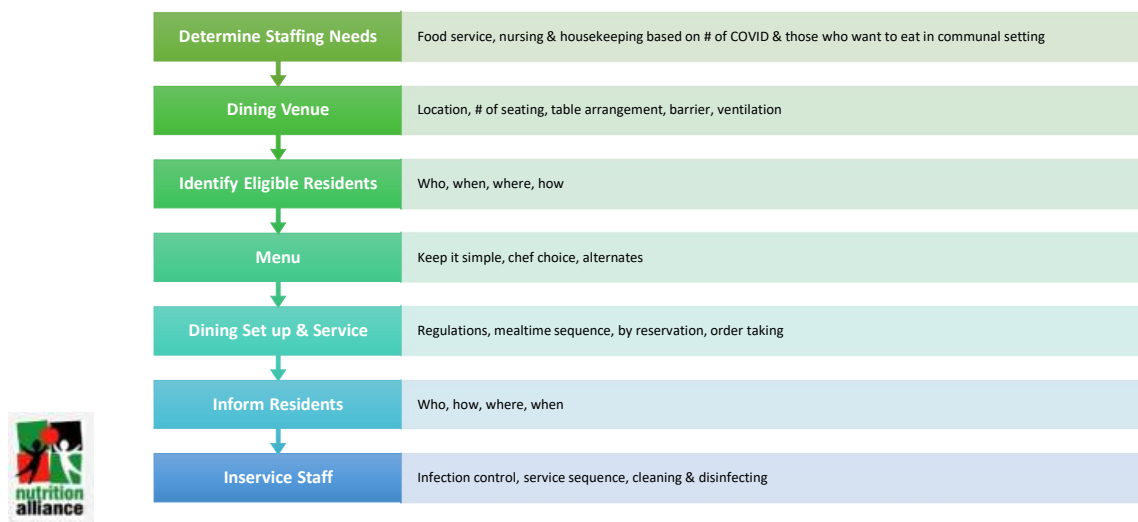
Social Distancing

- At least 6 feet social distancing
 - Between persons
 - Handy social distancing calculator
<https://www.calconic.com/calculator-widgets/social-distancing-calculator/5ef21c169444bf0029086759>
 - Physical barriers

<https://covid19.colorado.gov/safer-at-home/social-distancing-calculator-for-indoor-and-outdoor-events>

7

Pre-Opening Flowchart



May be reprinted with author's permission

8

Inservice Staff

- All Staff
 - Infection control as it pertains to communal dining
- Food Service
 - Cleaning and disinfecting communal dining areas
 - Cohorting: Staff, residents, visitors
 - Table Set up
 - Order taking and service sequence
 - Seat assignments & reservation process
- Nursing
 - Cohorting: Staff, residents, visitors
 - Seat assignments & reservation process
- Housekeeping
 - Cleaning and disinfecting Communal dining areas



9