

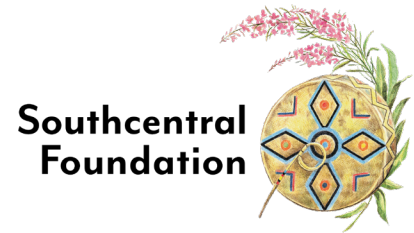


SOCIETY OF
RESEARCH
ADMINISTRATORS
INTERNATIONAL

Developing Research Administration Capacity in a Tribal Health Context

R. Brian Woodbury, MPH

Manager of Research and Evaluation Services
Southcentral Foundation



Sarah Garcia, MBA, CRA, CFRA

Fiscal Officer
Alaska INBRE, University of Alaska Fairbanks



Alaska is a large state with a small and rural population.

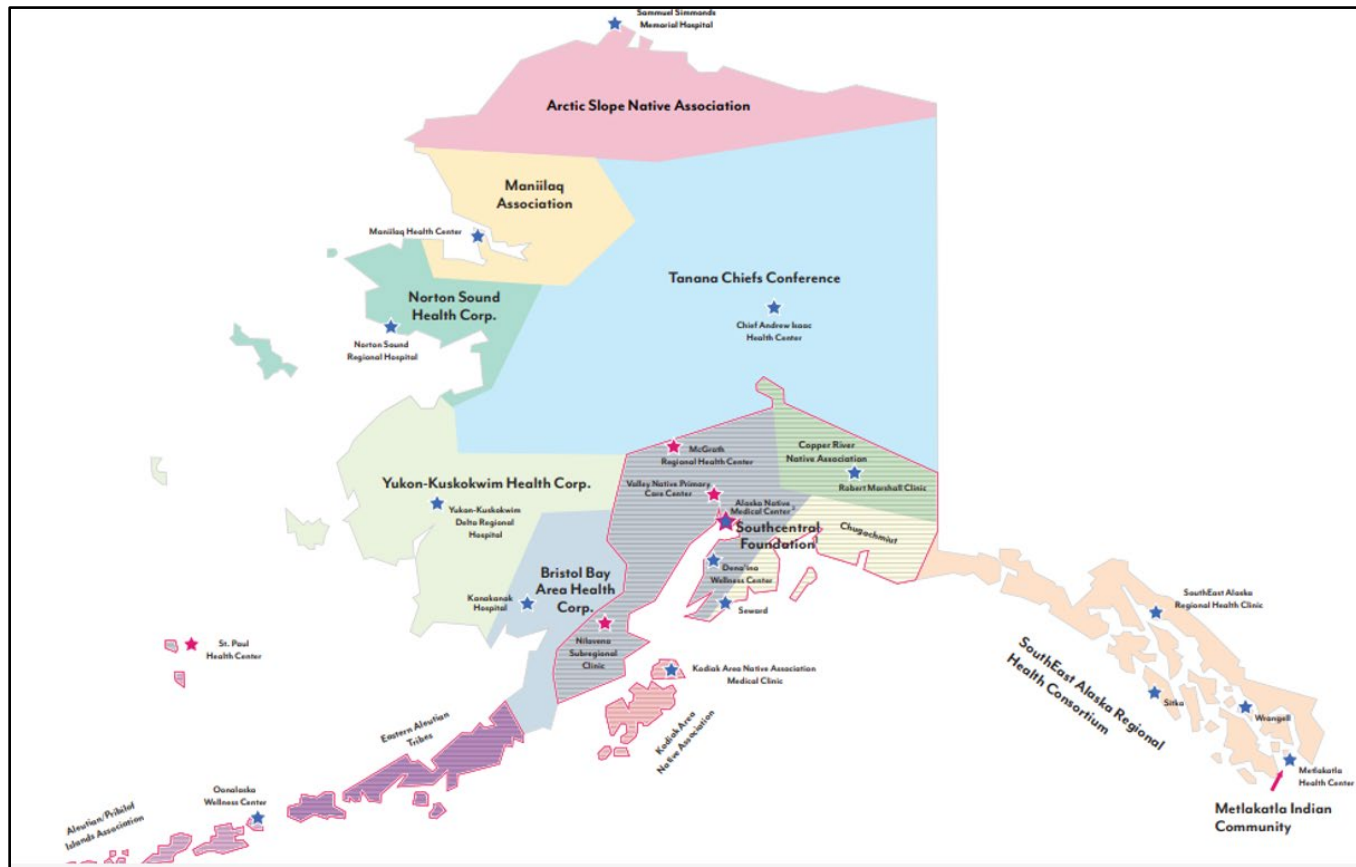
Alaska's research community is small and underfunded.

Alaska is addressing substantive population health issues.

**Research Needs
>
Research Capacity**



Alaska Native Tribal Health System



Southcentral Foundation Research

Established 2007

24 Scientific and Administrative Staff

20+ Active Grants

>50% ANAI Staff



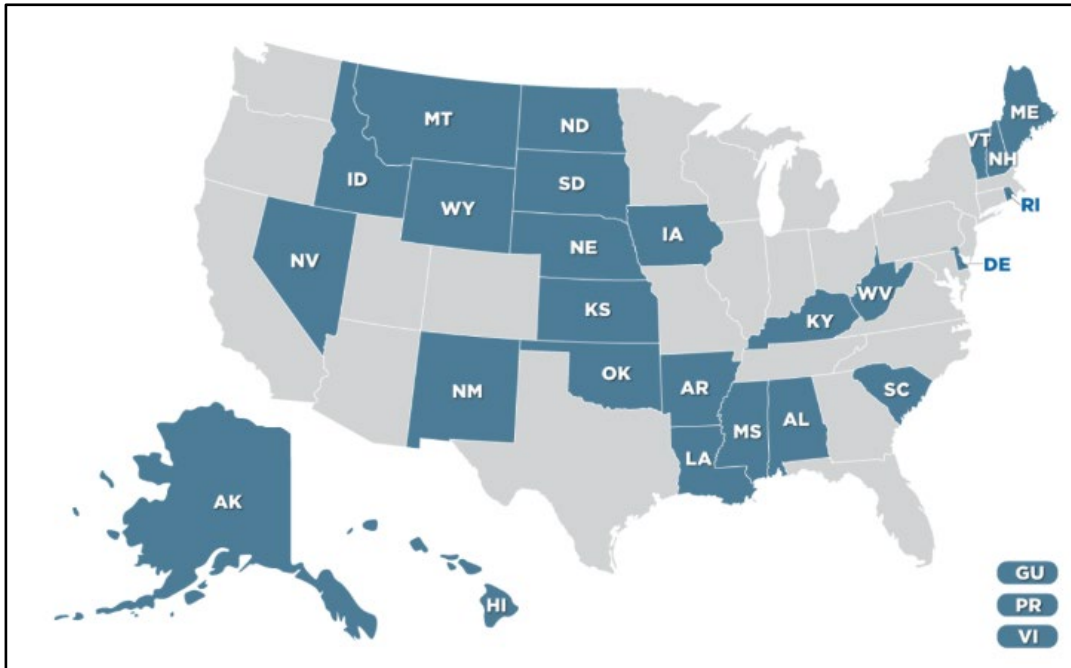
Community-Engaged Research

Community-Driven Research Agenda

Team Science

Commitment to Research and Research
Administration Capacity Development

IDEA Networks of Biomedical Research Excellence (INBRE)



“INBRE funds statewide networks...to build biomedical research capacity through support for faculty research and mentoring, student participation in research, and research infrastructure enhancement.”

Alaska INBRE

Funding: Continuously funded since 2001, entering Phase 5 in Summer 2025

Network Partners: 3 Universities, 2 Tribal Health Organizations, 1 Tribal College

Organization: 4 Cores and 2 Project Areas



Cores: Administrative, Data Science, Research Analytics, Community-Based Participatory Research

Project Areas: Developmental Research Project Program, Student Research Program

Native American Research Centers for Health

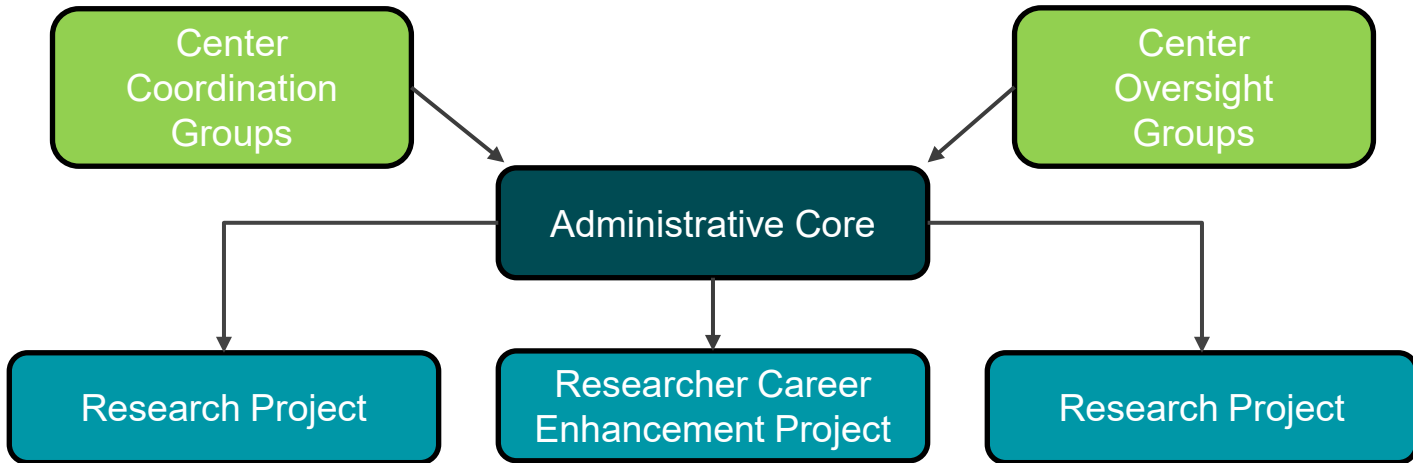
NARCH Program Goals

- Support community-led research to **reduce health disparities in AI/AN communities.**
- Grow **research capacity and infrastructure** within AI/AN communities and organizations.
- **Enhance health related research partnerships.**

NARCH at SCF

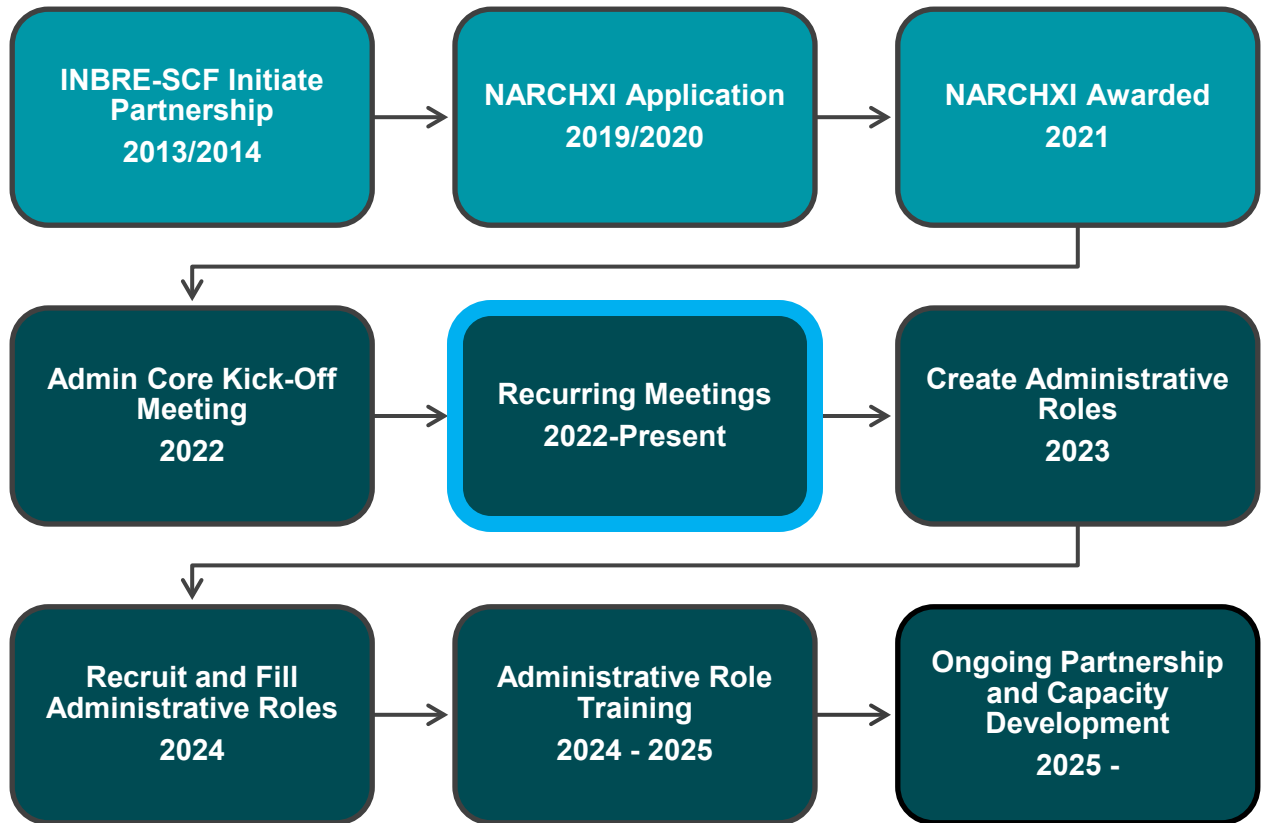
- Fund research on tobacco cessation, alcohol sobriety, prediabetes screening, and suicide risk prediction.
- Provide training opportunities to support **researcher professional development.**
- Grow administrative capacity needed to successfully identify, apply for, and **manage research grants.**

NARCH XI: Building Capacity for Dissemination and Implementation Research in a Tribal Healthcare System



Administrative Core Specific Aim: Implement an ANAI **Research Administrator position** and mentoring program to support the **administrative, coordination, and communication** needs of complex, multicomponent center grants.

SCF – INBRE AK Partnership: Timeline



SCF – INBRE AK Partnership: Outcomes

FINANCE

Finance Manager

Senior
Accountant

GRANTS

Grant Manager

Grants Specialist

Grants Advisor

RESEARCH

Research
Manager

Program
Coordinator

SCF – INBRE AK Partnership: Outcomes

ACTION	SCF Research	INBRE-AK	SCF Grants	SCF Finance	SCF HR
Identify Solution	X	X			
Specify Roles/Responsibilities	X	X			
Gain Support of Internal Partners	X		X	X	X
Develop and Approve Job Descriptions	X				X
Development Management, Onboarding, and Training Plans	X		X	X	
Conduct Recruitment and Hiring	X				X
Initiate Onboarding and Training	X	X	X		

SCF – INBRE AK Partnership: Outcomes

TASK	Research Manager	Research Grant Specialist	Research Finance Specialist
Grant Opportunity Identification	R	I	I
Grant Application Processing	A	R	R
Grant Management	C	R	R
Grant Closeout	A	R	R

- 72 discrete grant administration tasks
- Organized chronologically into 12 pre- and post-award categories
- Assigned to 9 individual-level roles and 3 department-level roles
- Tasks categorized as responsible, accountable, consulted, and informed
- Identifies trainers and training resources for each task

SCF – INBRE AK Partnership: Outcomes

FINANCE

Finance Manager

Senior
Accountant

GRANTS

Grant Manager

Grants Specialist

Grants Advisor

RESEARCH

Research
Manager

Program
Coordinator

Research Grants
Specialist

Research
Finance
Specialist

SCF – INBRE AK Partnership: Outcomes



SCF – INBRE-AK Partnership: Recommendations



Understand that Partnerships are Relationships

Engage in Bilateral, Equitable, Respectful Communication

Commit to Co-learning and Co-creation

Be the partner you would want to have

Thank You!



Questions?