



SRA INTERNATIONAL
ANNUAL MEETING
SEATTLE 2023
OCTOBER 14-18

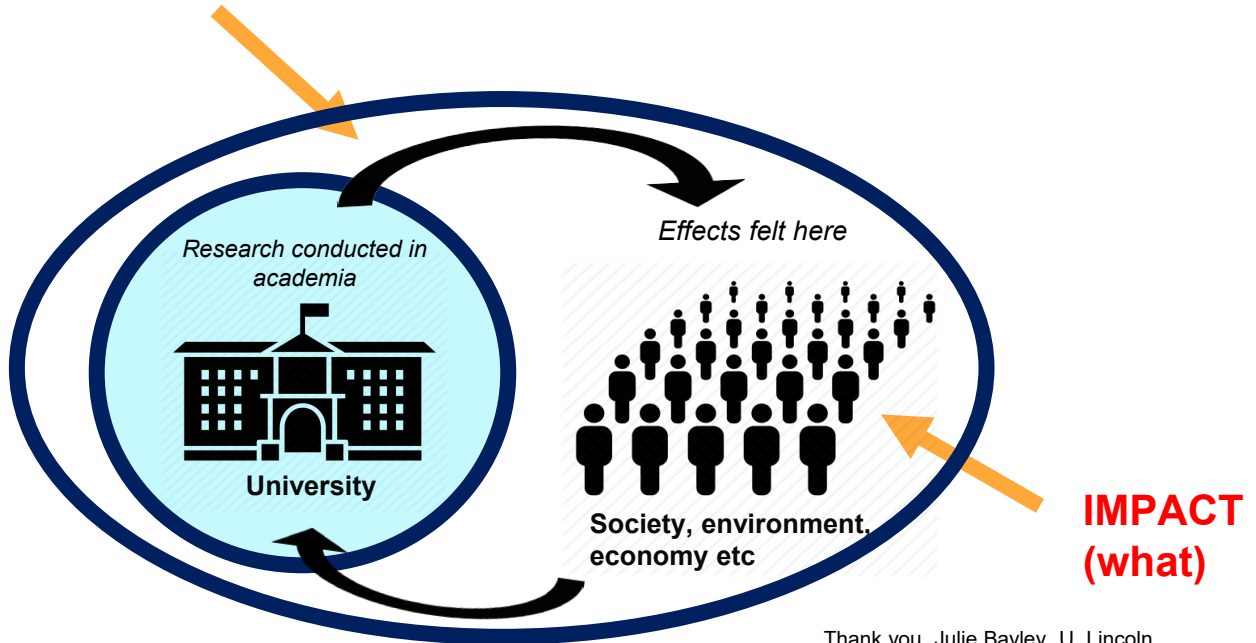
The Evolution of Research Impact

Julie Risien, Oregon State University (US)
Andrew Wray, University of Bristol (UK)
David Phipps, York University (Canada)



We respectfully acknowledge that our event today is taking place on the homelands of the Coast Salish peoples, who continue to steward these lands and waters as they have since time immemorial. We recognize tribal nations and organizations who actively create, shape, and contribute to our thriving community at Seattle University and beyond

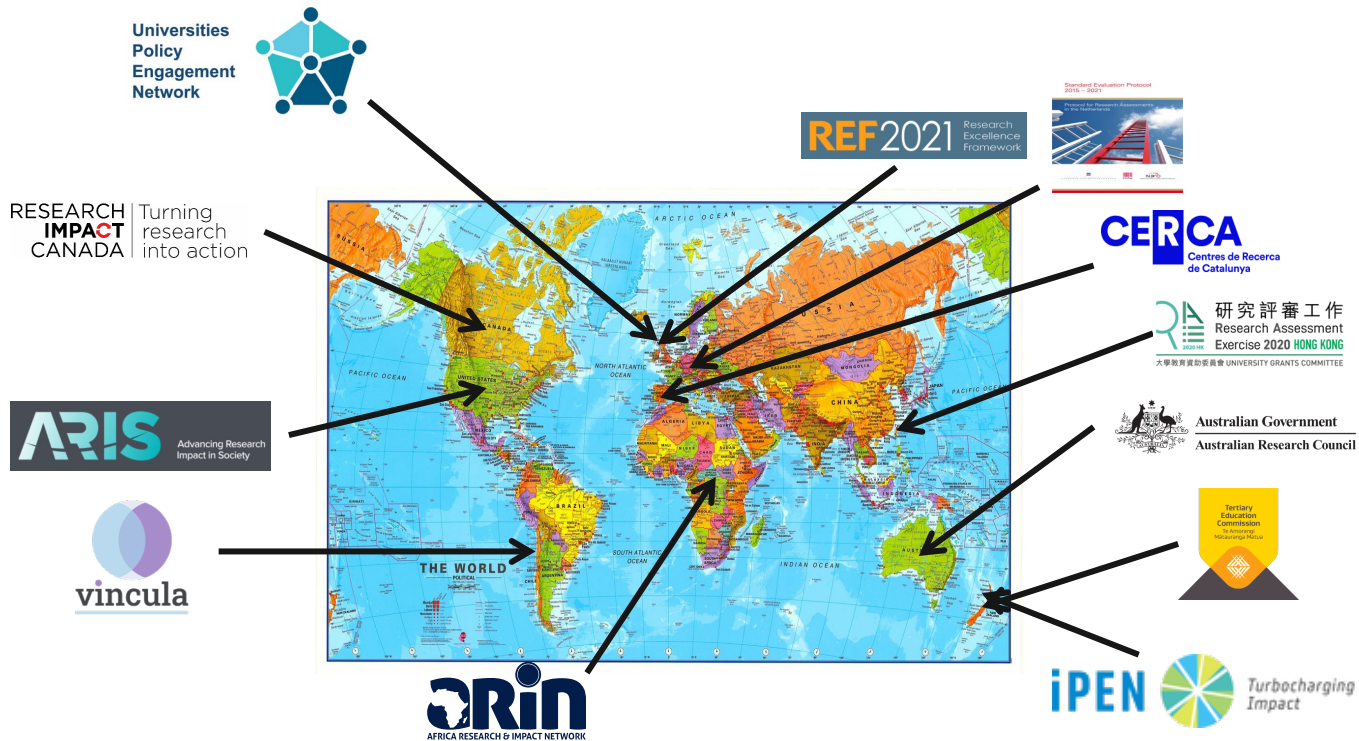
KNOWLEDGE MOBILIZATION (how)



Thank you, Julie Bayley, U. Lincoln

IMPACT = Provable effects (benefits) of research in the 'real world'

International Systems of Research Impact



MISSION-DRIVEN = HOW

ASSESSMENT-DRIVEN = WHAT



SOCIETY OF
RESEARCH
ADMINISTRATORS
INTERNATIONAL

Evolution of Research Impacts in the United States

October 16, 2023, SRAI-Seattle



Oregon State
University



Advancing Research Impact in Society



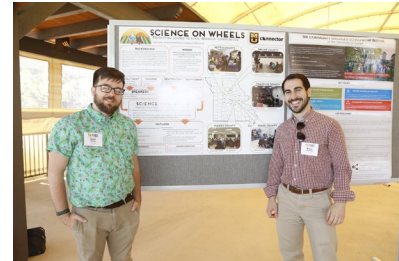
researchinsociety.org



@ARISImpacts

Mission

- **ARIS works to amplify the impacts of research for the benefit of society.**
- ARIS (which, was once NABI):
 - Serves as the hub for expertise on research impacts policy, promotion and practice.
 - Advances scholarship and stewardship of research impacts across professions and sectors.
 - Supports researchers and the professionals and partners who collaborate with them to achieve societal impact.
 - Partners with the National Science Foundation and other U.S.-based and international organizations to prioritize research impacts for societal benefit.



Path to Focus on Impacts – Emergence of NABI

1945

Science the Endless Frontier

...ensure the prosperity, well-being and progress of the American Nation

1997

NSF establishes two criteria for proposal review-BI and IM

2011

NSB report. New NSF guidance focused on helping to define and evaluate BI and advance institutional support for BI

2010

ACRA: Calls for BI training for researchers and evidence of institutional support for BI

2013

First BI Infrastructure Summit at University of Missouri

2014

- NSF RCN Grant Awarded (MCB-7408736)
- NABI is formed

2015

NABI releases first "Guiding Principles on Broader Impacts"

2014

NSF Releases "Perspectives on Broader Impacts"

ARIS
Advancing Research Impact in Society

Recent Impacts Milestones – ARIS Rises

2017

- State of BI Town Hall Meeting
- State of BI Convening at NSF

2018

- NABI releases "Current State of Broader Impacts"
- \$5.2M NSF Grant from OIA (OIA-7870732) awarded.
- NABI transitions to ARIS Center

2020

- ARIS launches the BI Toolkit and ORIC
- ARIS releases updated version of the "Guiding Principles on Broader Impacts"

2022

- ARIS participates in NSF COVs
- ARIS launches BI Rubric
- ARIS hosts "Evolution of BI" Convening
- ARIS hosts Listening Session on BI Infrastructure & Support
- ARIS hosts Listening Session on Assessment and Evaluation for BI

2020

- NSF adds BI category: use of science and technology to inform public policy
- NSB releases "Vision 2030". Defines BI actions to improve BI criteria, broaden participation and investment in STEM, train proposal reviewers, and ensure BI expertise is included on COV panels.

2022

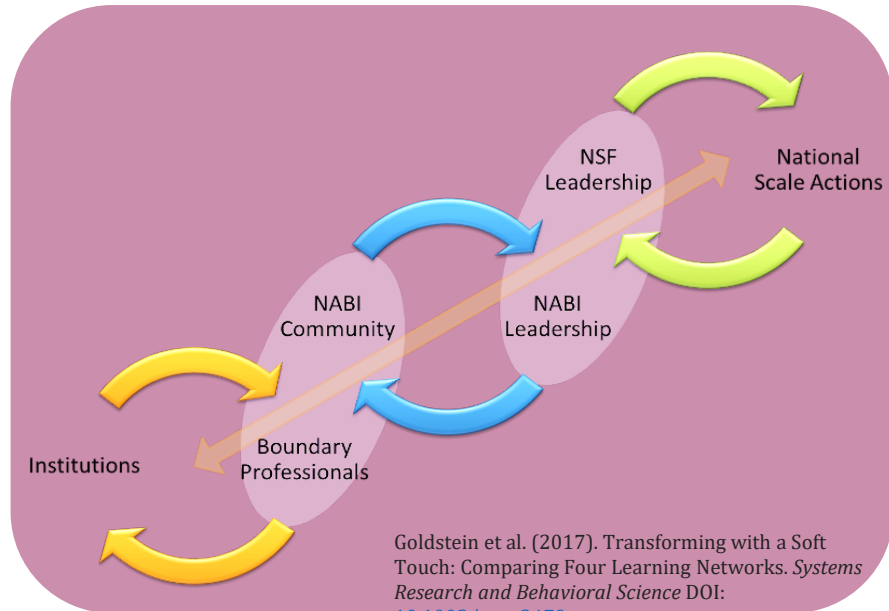
- NSF forms new Partnerships (TIP) Directorate
- OSTP defines federal funding priorities: focus on equity in scientific research and STEM education, workforce development, open science and community-engaged R&D
- NSB launches Task Force on Merit Review

Impacts become embedded as:

Broadening Participation
Use-Inspired Science
Translational Science
Equity in Science Funding
International Partnerships
Philanthropic Partnerships
Industry Partnerships
Engaged Approaches
Transdisciplinary Science

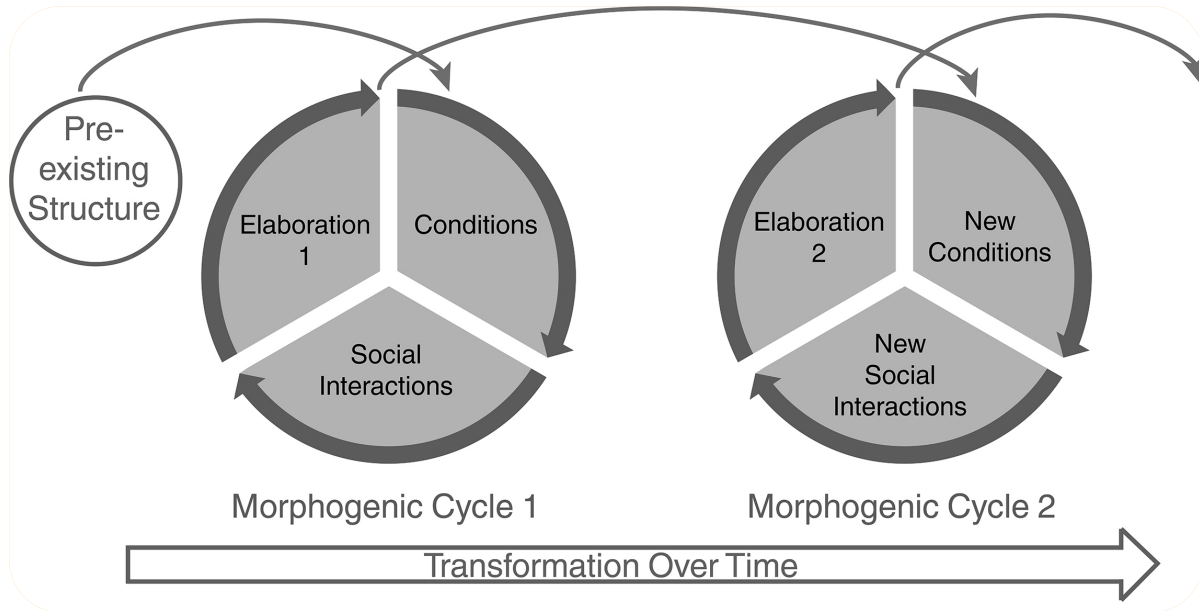
Community of Practice Design for a Transformative Learning Network

- Loose, light structure
- Distributed membership & leadership
- Minimal resources, but central coordination
- Emphasis on learning, innovation, and sharing practice
- Aspirations for collective impacts

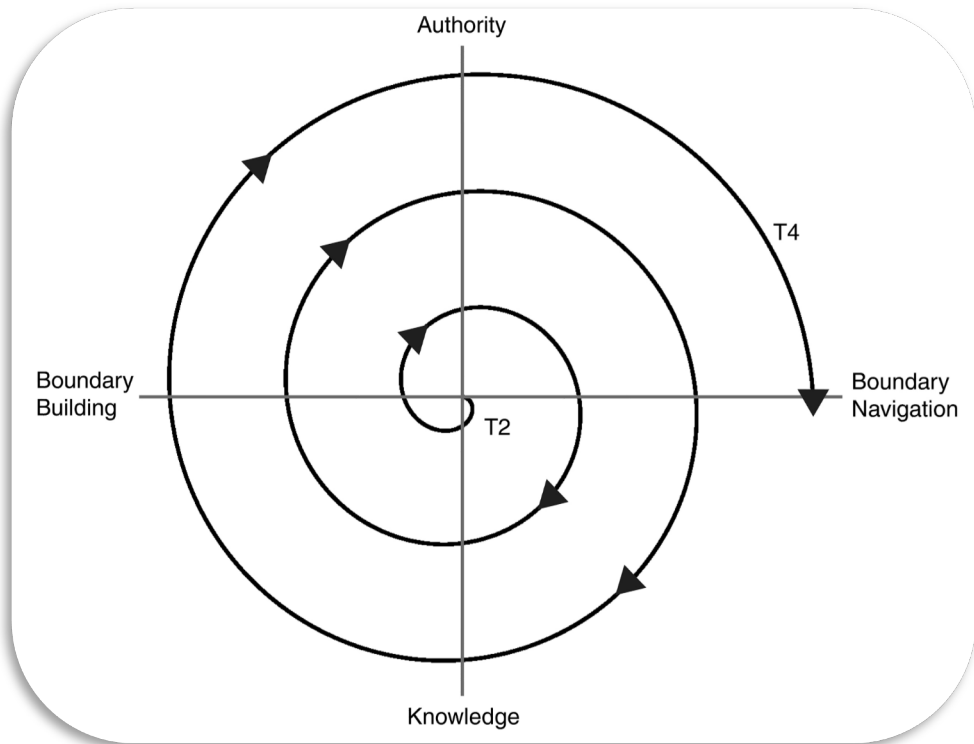


Goldstein et al. (2017). Transforming with a Soft Touch: Comparing Four Learning Networks. *Systems Research and Behavioral Science* DOI: [10.1002/sres.2479](https://doi.org/10.1002/sres.2479)

Cycles of Transformation



	Cycle 1	Cycle 2	Cycle 3
Knowledge	no mechanism for social interaction	network facilitates regular social interactions	sustained social and a-social channels
	knowledge resources are limited and dispersed	expanded embodied knowledge and resources	knowledge base well established, scholarship emerges
	practices are unrefined or occur in isolation	best practices exposed, applied and openly available	best practices are normalized
Authority	isolated individuals working w/out authority	increased individual efficacy, bolstered by network	individuals identify as experts, profession is normalized
	institutions are unaware of challenges	institutions invest resources support practice	institutions infrastructure is normalized
	network emerges to define problems and domain	network influences some allocation of resources	network influence expands, becomes professional association



Risien, J. and Goldstein, B.E. (2020). Boundaries Crossed and Boundaries Made: The productive tension between learning and influence in transformative networks. *Minerva*. DOI: [10.1007/s11024-021-09442-9](https://doi.org/10.1007/s11024-021-09442-9)

Risien, J. (2019). Curators and sojourners in learning networks: Practices for transformation. *Evaluation and program planning*. DOI: [10.1016/j.evalprogplan.2018.12.001](https://doi.org/10.1016/j.evalprogplan.2018.12.001)



EVOLUTION OF BROADER IMPACTS



2023 Report to Guide and Shape Policy and Practice

- Infrastructure that is well-funded, coordinated, collaborative and context dependent.
- Dedicated staff to connect many stakeholders of research impact.
- Supportive reward and advancement structures.
- Assessment and accountability improvements.
- Visionary institutional leadership.

National research impact policy is mobilizing institutions!

The ARIS community believes that NSF's broader impact requirements:

- support capacity building to advance impacts.
- drive development of new infrastructure.
- align infrastructure nationally and catalyze buy-in from administrators



“ More inclusive engagement in science benefits the American people, the environment, and the economy. Agencies should invest in making Federally funded R&D accessible to the public. Agencies should seek out public participation in R&D programs wherever possible. ”

—OSTP FY23 Federal Priorities Memo

Thank you!

Email: Julie.Risien@oregonstate.edu
OR: muresearcharis@missouri.edu

Website: researchinsociety.org

X: @ARISImpacts

LinkedIn: ARIS Impacts

YouTube: ARIS Impacts

Instagram: ARIS Impacts

Facebook: ARIS Impacts



Sign up for our online newsletter list to stay informed about upcoming events, news, and resources for knowledge mobilization.

Become an **ARIS Member** to access the **Forum**, network and share resources and opportunities online.

Photos by Unknown Author licensed under [CC BY-NC](#)

Research Impacts in the UK

*Dr Andrew Wray, Director of Research Impact
University of Bristol, UK*

Early UK networks

- National Co-ordinating Centre for Public Engagement (2008)
 - Supports excellent public engagement practice: training & resources on how to engage different audiences & sectors
 - Planning & strategy at University level to help PE thrive
 - Connections to museums, community groups etc. to amplify impact
- Praxis - a “tech transfer” training network (2002)
 - To equip members with skills, resources and connections
 - To inform and influence an ecosystem
 - To provide communication channels, events, discussion fora and conferences to share best practice
- Association of University Research Industry Liaison, AURIL
 - Focussed on collaborative R&D and training for industry
 - 1,600 members across universities, business and government
 - Merged with Praxis in 2017



National
Co-ordinating
Centre for
Public Engagement

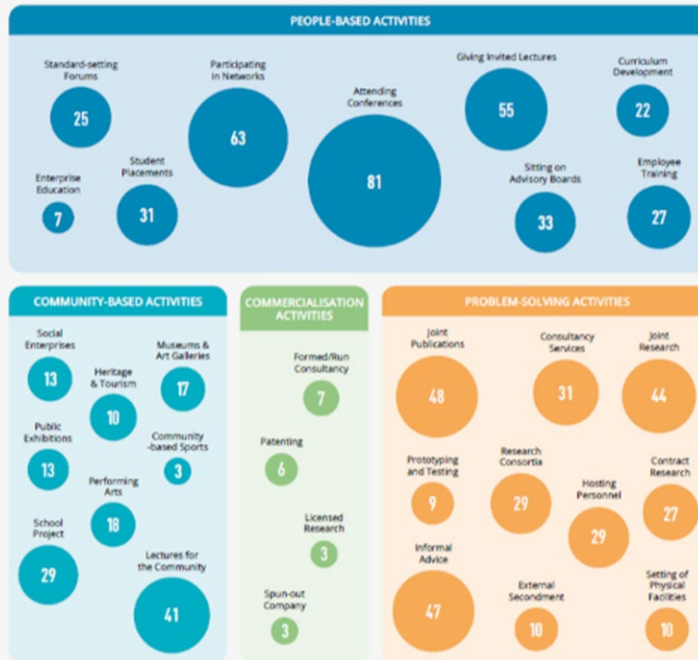


UK Government policy

“an effect on, change or benefit to the economy, society, culture, public policy or services, health, the environment or quality of life, beyond academia” – UK funding agencies

- Requires universities to consider the full range of knowledge exchange
 - Provides funding to do this; mainly used to employ staff

Exhibit 44 Academic external interaction activity and commercialisation in the last three years (% of respondents)



What external activities do British academics undertake? (2012-15)

This is Knowledge Exchange. These are the drivers of innovation.

National Survey of Academics - National Centre for Universities & Business
(ncub.co.uk)

Present UK networks

- NCCPE
- PraxisAURIL – the UK's professional association for Knowledge Exchange practitioners
 - 4000+ active KE practitioners from more than 182 member organisations
 - National & international training programme
 - Income from membership, training, conferences and events
- University Policy Engagement Network (UPEN)
 - a community committed to increasing the impact of research on policy
 - organises events with government & parliament
 - developing best practice amongst universities in policy engagement
 - champion for this relatively new role within universities



Universities
Policy
Engagement
Network



Future Directions

- Three overlapping networks for impact practitioners
 - Dynamic tension in each organisation about how well we cover the full range of KE
 - Government policy on grants drives collaboration
- Special interest groups have arisen organically
 - on policy engagement
 - on impact for social science & humanities
 - if successful these become embedded in more formal national networks
- Even more national organisations:
 - National Centre for Universities and Business
 - Civic University Network
 - ...

Tips for building national networks

- Membership, conferences and training can provide revenue
- Create regional or national training programmes that are attractive and build a community of professionals
- Draw the boundaries loosely and be inclusive.
- The users of research in business, NGOs or public sector don't care about the types of KE, they just want to be able to use stuff
- Collaborative R&D (including with students) is one of the biggest opportunities; don't forget it because spinouts look more exciting
- Encourage special interest groups and new areas of focus, e.g. allow them space at annual meetings

RESEARCH
IMPACT
CANADA

TURNING
RESEARCH
INTO ACTION



Knowledge Mobilization and Research Impact Canada



[@researchimpact](https://twitter.com/researchimpact)



From local to national



YORK 



University
of Victoria

We are a pan-Canadian network of 30 institutions with a goal of maximizing the **impact** of academic research for the public good



UNITED
KINGDOM

ATHABASCA UNIVERSITY
BISHOP'S UNIVERSITY
BRAIN CANADA
CARLETON UNIVERSITY
CHRONIC PAIN CENTRE OF EXCELLENCE FOR CANADIAN VETERANS
CONCORDIA UNIVERSITY
KWANTLEN POLYTECHNIC UNIVERSITY
LAKEHEAD UNIVERSITY
LONDON SOUTH BANK UNIVERSITY
MCMASTER UNIVERSITY
MEMORIAL UNIVERSITY
NORTHERN ALBERTA INSTITUTE OF TECHNOLOGY
ONTARIO SHORES
SIMON FRASER UNIVERSITY
UNIVERSITY OF ALBERTA
UNIVERSITY OF BRIGHTON, UK
UNIVERSITY OF BRITISH COLUMBIA
UNIVERSITY OF CALGARY
UNIVERSITY OF GUELPH
UNIVERSITÉ DE MONTRÉAL
UNIVERSITY OF OTTAWA
UNIVERSITÉ DU QUÉBEC À MONTRÉAL
UNIVERSITY OF REGINA
UNIVERSITY OF SASKATCHEWAN
UNIVERSITY OF VICTORIA
UNIVERSITY OF WINDSOR
UNIVERSITY OF WINNIPEG
UNIVERSITY OF YORK
WESTON FAMILY FOUNDATION
YORK UNIVERSITY

WHAT DO WE DO?



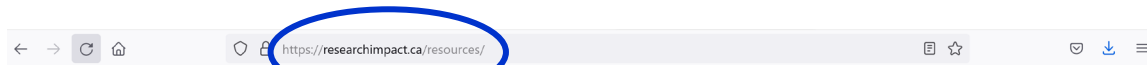
Build institutional support to encourage collaboration to connect research, policies, and innovations



Help researchers and partners to **demonstrate the impact of their research** excellence



Facilitate a **community of practice** by developing and sharing best practices, services, and tools



FR

RESOURCES

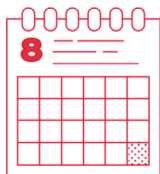
Welcome to our resources repository! The following tools are intended to help you with your knowledge mobilization activities!

Knowledge mobilization is about getting the “right information” to the “right people” in the “right format” at the “right time”.

It consists of activities and outputs that build awareness, disseminate findings, and enable use of research. The goal is to maximize the impact of research and communicate these impacts as widely as possible.

YORK 

MobilizeYU / MobilizeU



8-Week Course

Online Course
June 5 to July 28, 2023



Leading KMb

Professionals and Researchers
Teach this Online Course



Learn

About Theoretical and Practical
Aspects of Effective KMb

	RIC 23	Winter 23	CAG 23	UW 23	Fall 22	RIC 22	Winter 22	Fall 21	Winter 21
Participants	301	33	56	41	69	327	33	40	46
Institutions	42	5	18	23	4	22	4	5	3