



NAVAL
POSTGRADUATE
SCHOOL

“Improvise, Adapt and Overcome”

Greta E. Marlatt,
DKL Outreach & Academic Support
Division
12/11/2013



NAVAL
POSTGRADUATE
SCHOOL



Source:

<http://www.marineparents.com/marinecorps/sempgumby.asp>



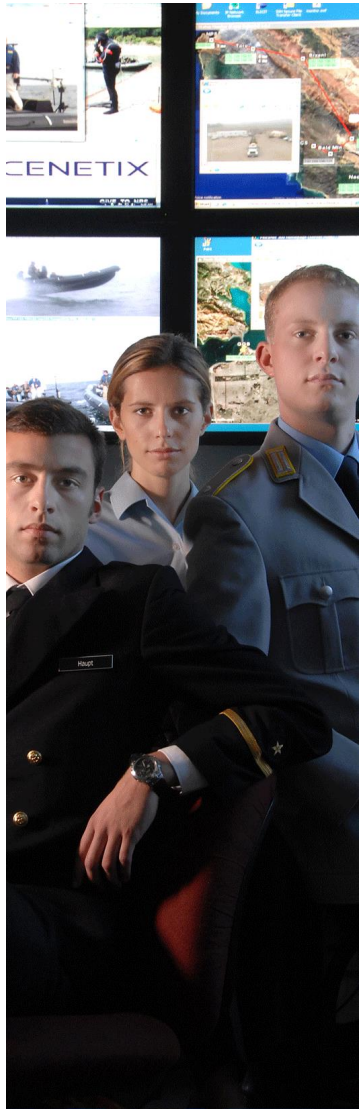
NAVAL POSTGRADUATE SCHOOL





Mission of the Naval Postgraduate School

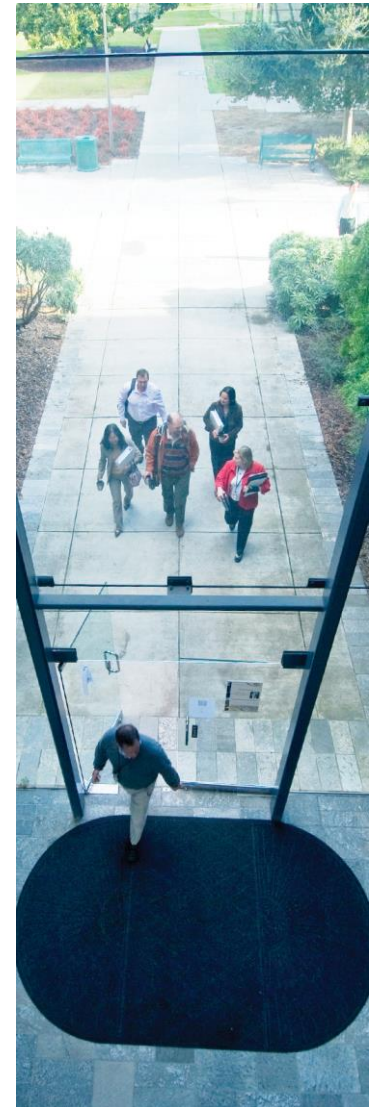
NPS provides high-quality, relevant and unique advanced education and research programs that increase the combat effectiveness of the Naval Services, other Armed Forces of the U. S. and our partners, to enhance our national security.

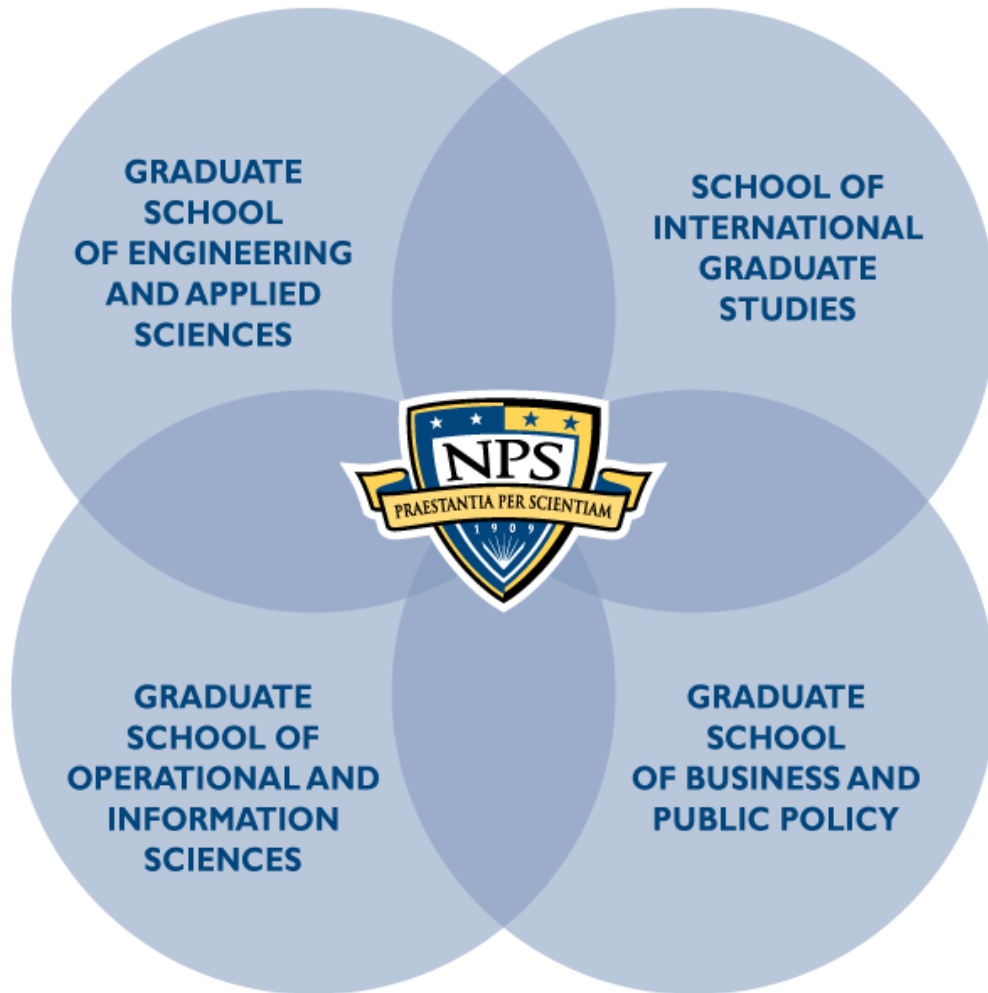




NPS *is* graduate education.

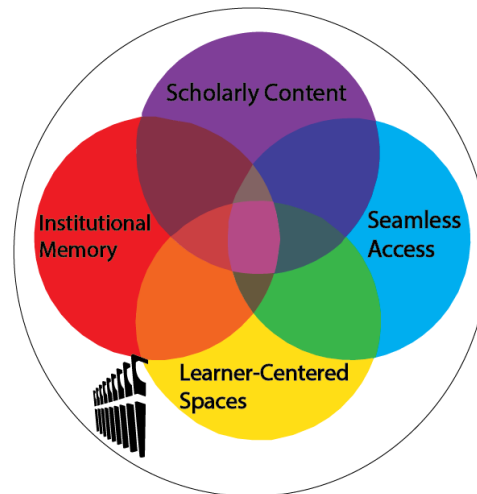
- Master's Degrees, Post-Master's, P.h.D.
- Accelerated, defense-focused degree programs
- Interdisciplinary, relevant, agile
- Biennial program reviews by flag-level sponsors





NPS is relevance delivered.

- Four focused graduate schools
- Interdisciplinary research centers combine expertise from across campus
- Unique, relevant curricula





Change is Happening!

- Some good...
- Some not so good...



Challenges

- NPS IG Inspection “fallout”
- Staff changes
- Hiring freeze & End Strength numbers
- Sequestration & CR
 - Budget cuts
- Travel (what travel?)
- Purchasing rules changed
- Cyber Security Inspection
- Serials Recompetition
- Space needs & building changes
- Google Scholar effect



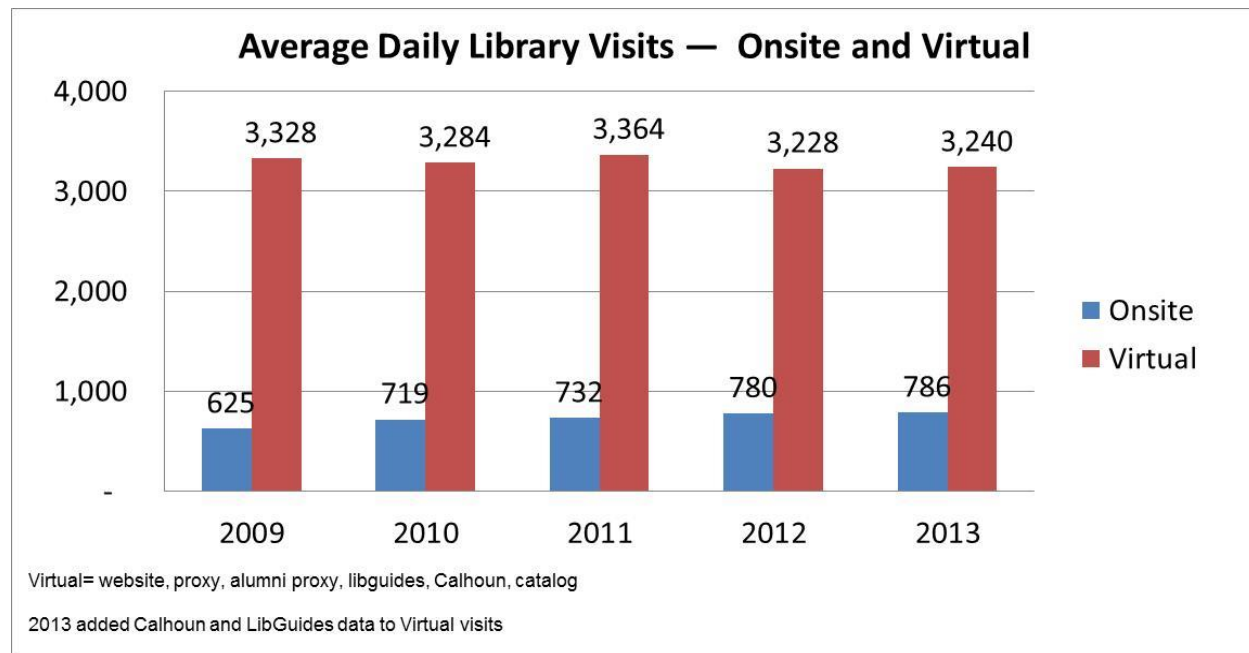
Building Disruptions

- HVAC
- Lighting
- Reduced footprint Space needs
 - Tenants
 - Services
- New compact shelving





Average Daily Library Visits— Onsite and Virtual





Creating Space

- Weeded out-dated or irrelevant print materials
- Added more electronic books/journals
- New compact shelving
 - Shelf cleaning project
- RESULT
 - “Reclaimed” 5,629 sq. ft.
 - New services





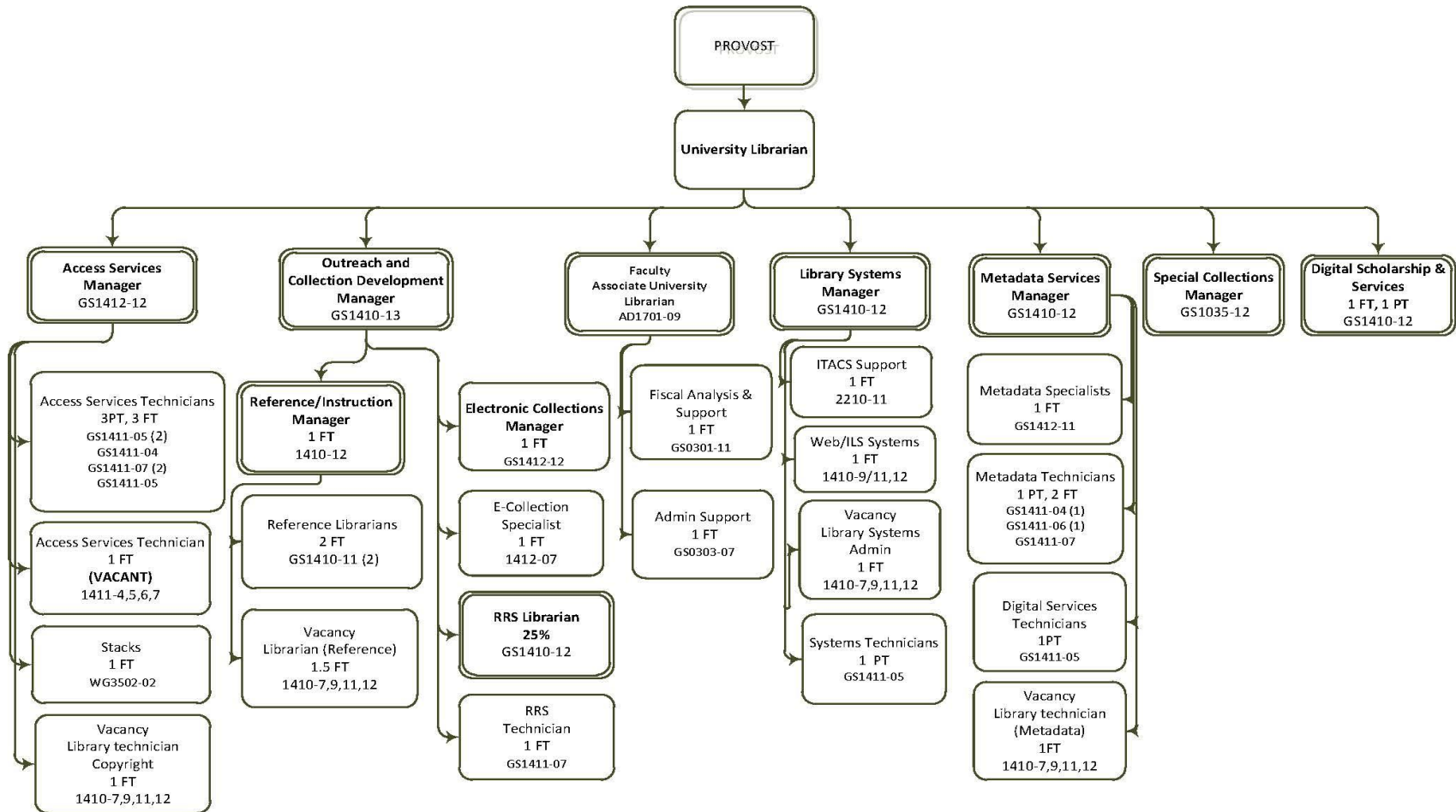
Design Sp@ce



Planning for Change

- Planning/Strategy team
- Web redesign team
- E-resources team
- RESULT
 - Staff/functional reorganization
 - More matrixed organization
 - Better/smarter services





DUDLEY KNOX LIBRARY

June 2013

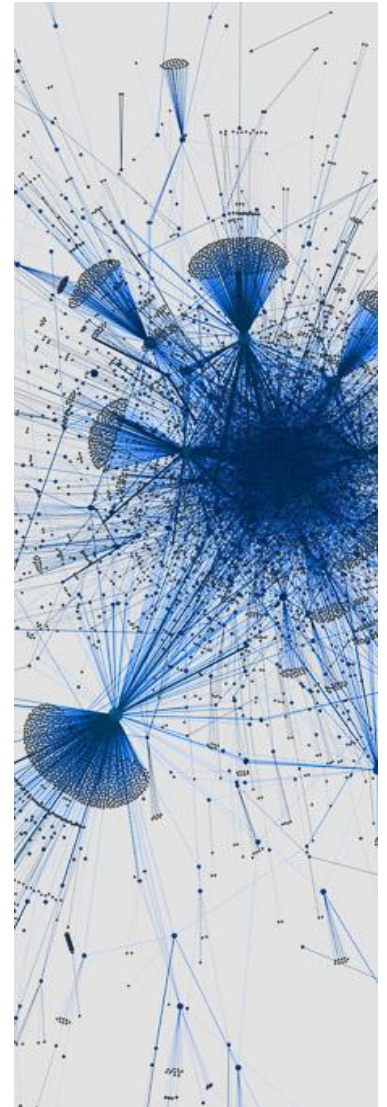


<div><u>ADMINISTRATION</u><ul style="list-style-type: none">• Budget• Campus Leadership• Communications & Programming• Copyright• Policy• Strategic Planning</div>		
ACADEMIC SUPPORT	ENTERPRISE SERVICES	INSTITUTIONAL KNOWLEDGE MANAGEMENT
<ul style="list-style-type: none">• Access Services (Circulation, Course Reserves, Document Delivery, Interlibrary Loan)• Collection Development• Collection & Stacks Maintenance• Educational Assessment & Effectiveness• E-Resources• Learning & Instruction• Outreach, Reference & Research Advisory• Patron Spaces• Service Points	<ul style="list-style-type: none">• Acquisitions & Purchasing• Business & Finance• Computer Hardware & Software• <u>CyberSecurity</u> & Information Assurance• Facilities• Human Resources• Institutional Assessment & Effectiveness• Licensing & Contracting• Safety• Staff Development & Training• Supplies• Web & Emergent Technologies	<ul style="list-style-type: none">• Digitization, Content Migration & Preservation• Discovery & Metadata• Institutional Archive• Restricted Resources• Scholarly Communications & Intellectual Property• Special Collections



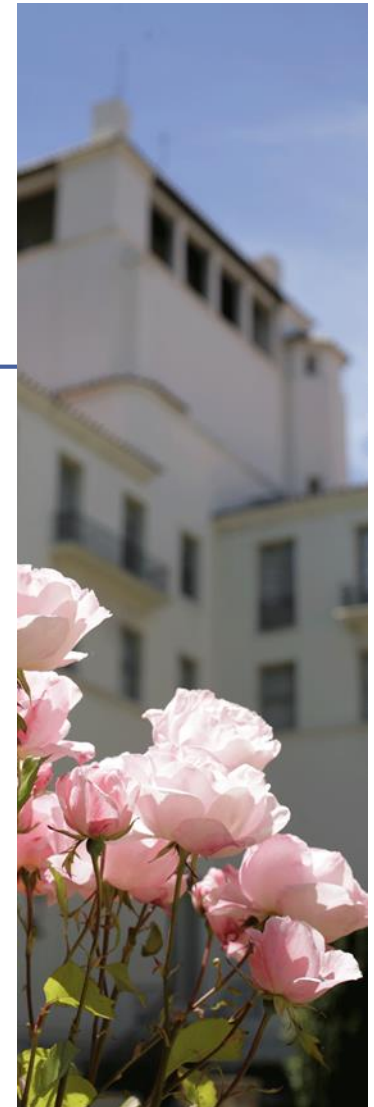
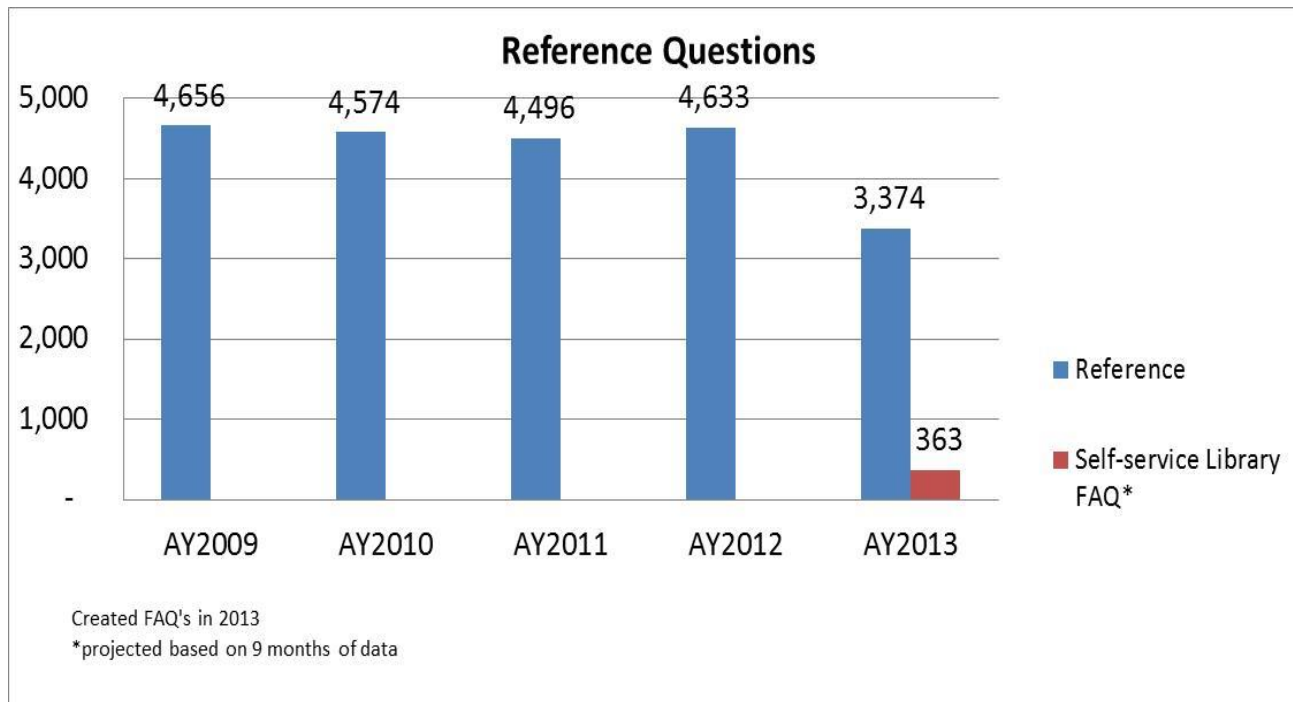
Reference Service

- 5 ½ became 2 ½
- Relocated desk
- Reduced Reference Hrs
- Drafted other staff Librarians for desk
- LibAnswers (Searchable FAQs)
- LibGuides
- Elluminate
- Mandatory tours
- Book a Librarian



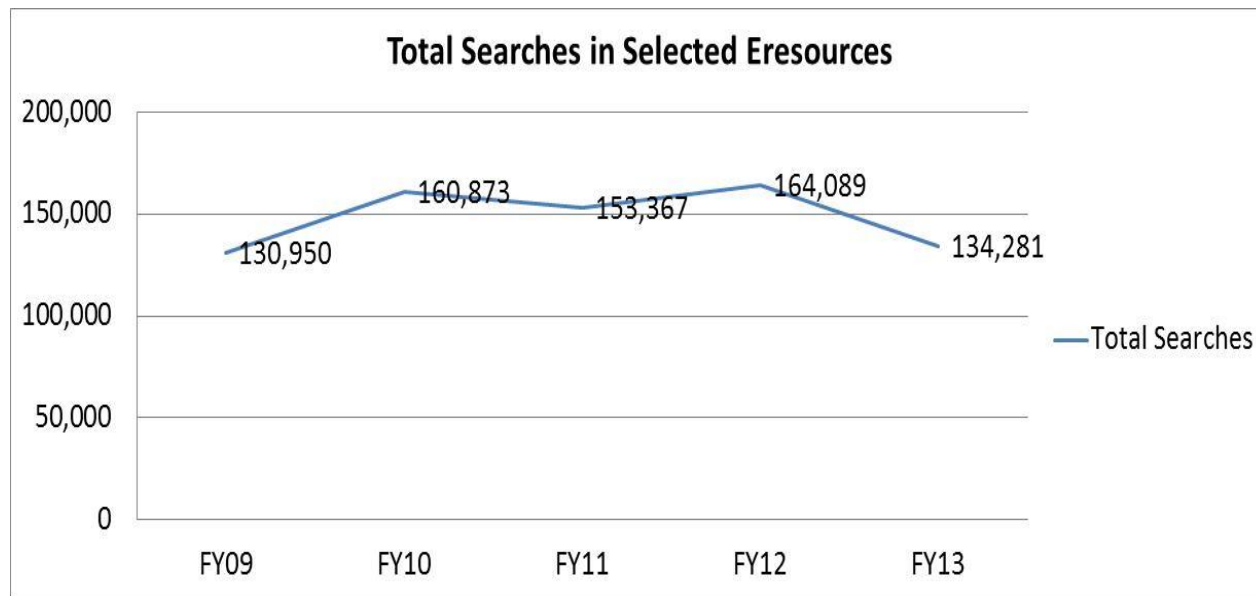


Reference Questions





Total Searches in Selected E-Resources



Resources Included:

ACM Digital Library
CIAO—Columbia
CRCNetBase
Ebrary
EBSCO Business Source
EBSCO SocINDEX fulltext
Emerald
EV2 Compendex
Global NewsBank
IEL (IEEE)
JSTOR (ALL)
LN Academic
PQ ABI Global Package
PQ PsycINFO
Project MUSE
ScienceDirect
SPIE Digital Library
Thomson Sci Cit Indx Exp
Thomson SocSci Citation



Coming Changes

- Reduce building hours
- More cross-training
- Rethink service delivery/models
 - Consolidate Circulation & Reference
 - More training
 - Research assistance by appointment
 - Quick self-help tutorials
- More user friendly website
- Partner more with tenant organizations
- More collaborate space
- More study space





Greta E. Marlatt
gmarlatt@nps.edu

