

---

# Using GIS to Enhance Historical Maps

Dr. Paulette Hasier, Chief of Geography and Map (G&M) ([phasier@loc.gov](mailto:phasier@loc.gov))



*“The Library of Congress is the world’s largest library, with nearly 170 million items in our collections, and extensive expert services and programs. What does this mean for you?”*

# LC Strategic Plan 2018-2023

---

- **Vision and Mission**

- All Americans are **connected** to the Library of Congress.
- **Engage**, inspire, and inform Congress/the American people with a universal and enduring source of knowledge/creativity.



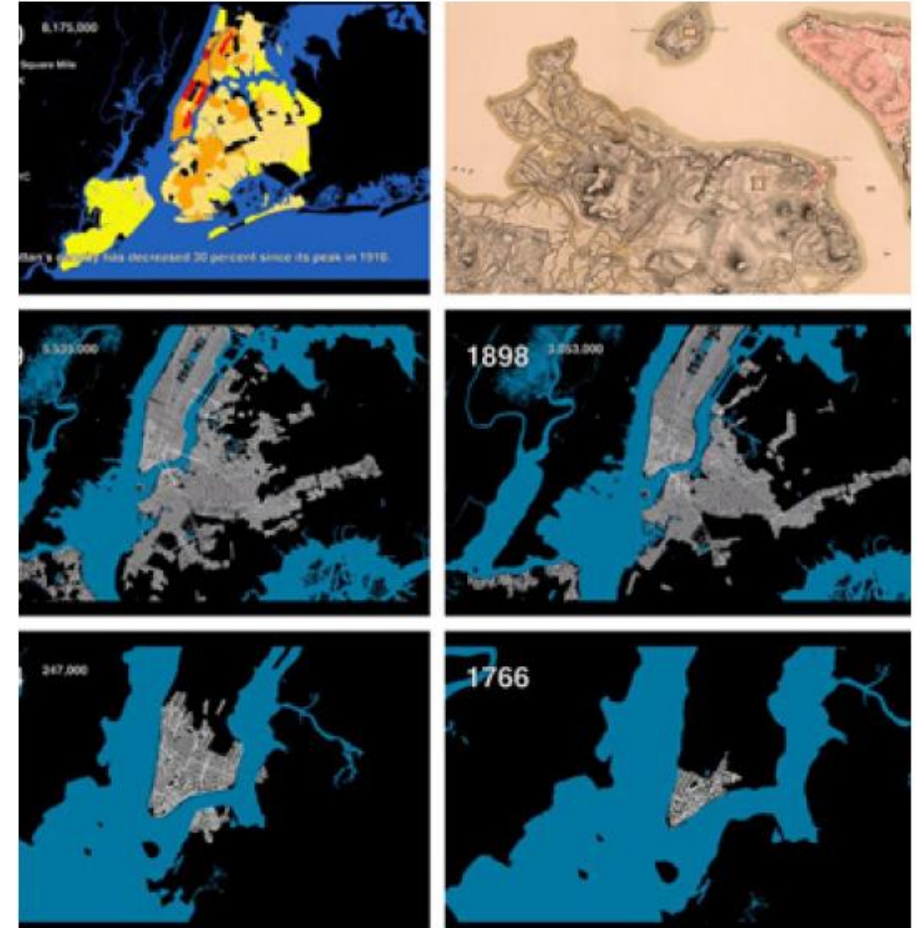
- **Expand Access and Enhance Services**

- Make our unique collections, experts, and services available when, where, and **how** users need them.
- Create valuable **experiences** for every user to foster lifelong connections to the Library.



# Agenda

- Geographic Information System (GIS)
  - Historic Maps, Data, Events
  - Using Tools and Technology
- External/Internal Customers
- How to adopt current tech
- Items for Consideration
- Challenges
- The Way Forward



<https://www.myleszhang.org/here-grows-new-york-city/>

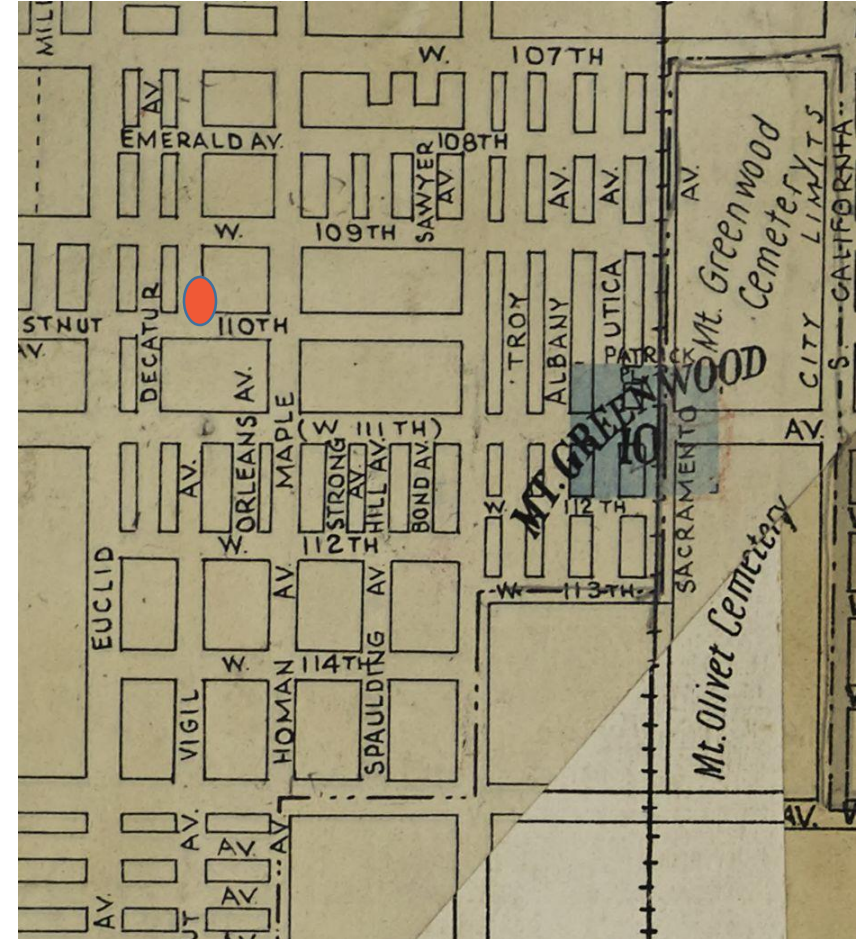
# Historical Maps and Digitization

Chicago Sanborn Map 1949

Sanborn Fire Insurance Map

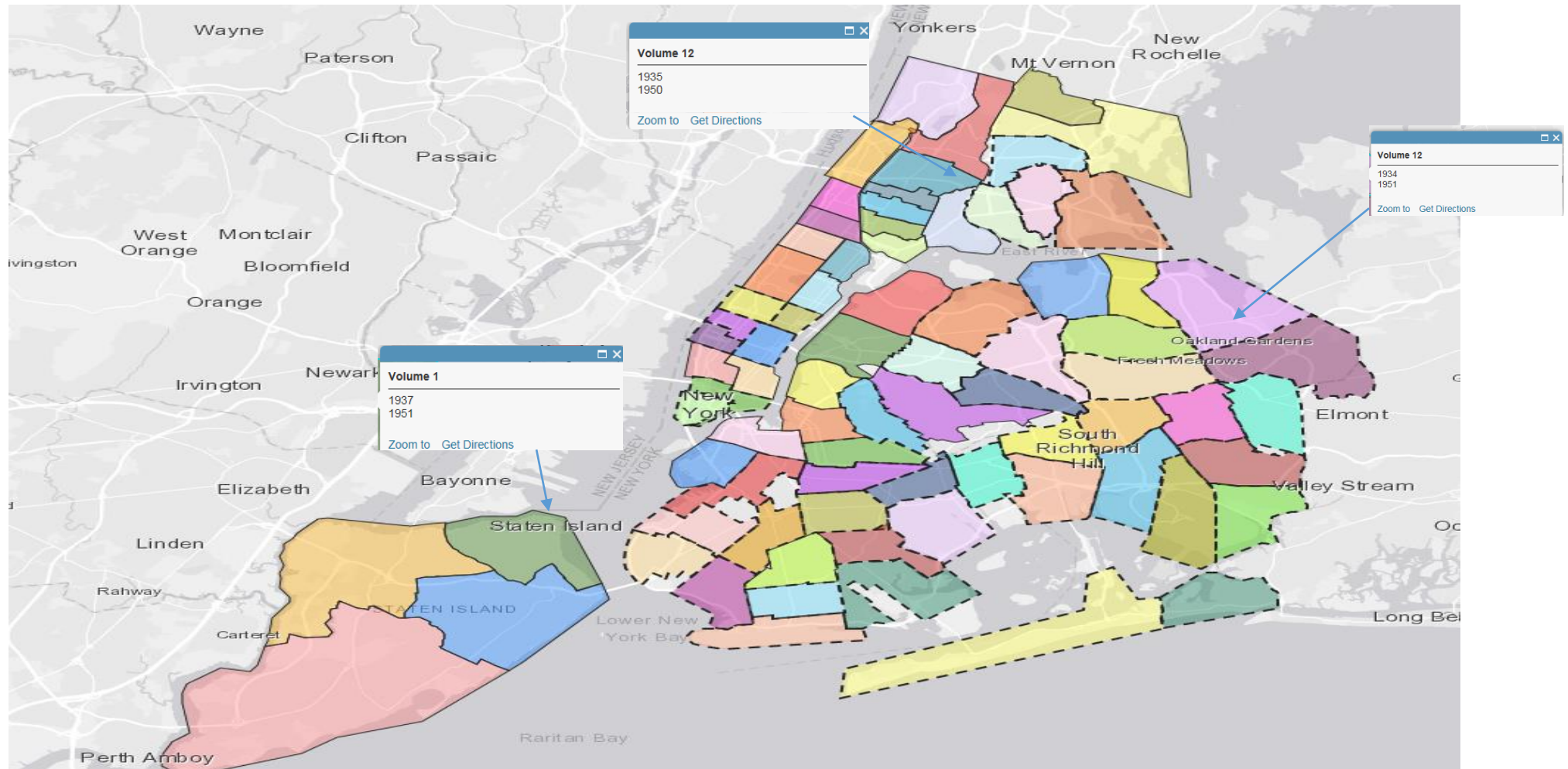
Most Heavily Accessed  
Resource on G&M Online

1 Million Publically Available  
by 2020

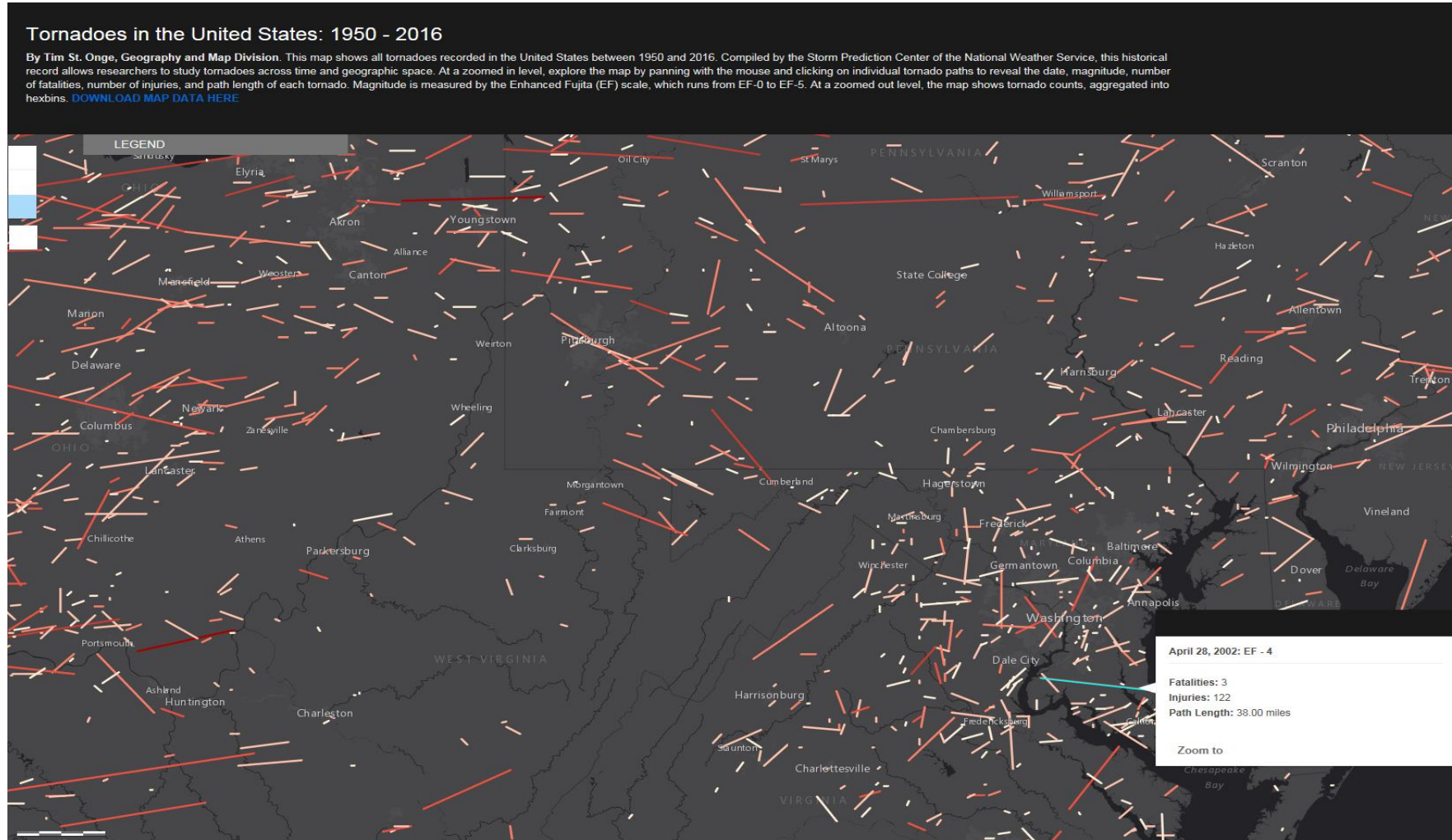




# Historical Maps and GIS Index



# Historical Data and GIS Mapping





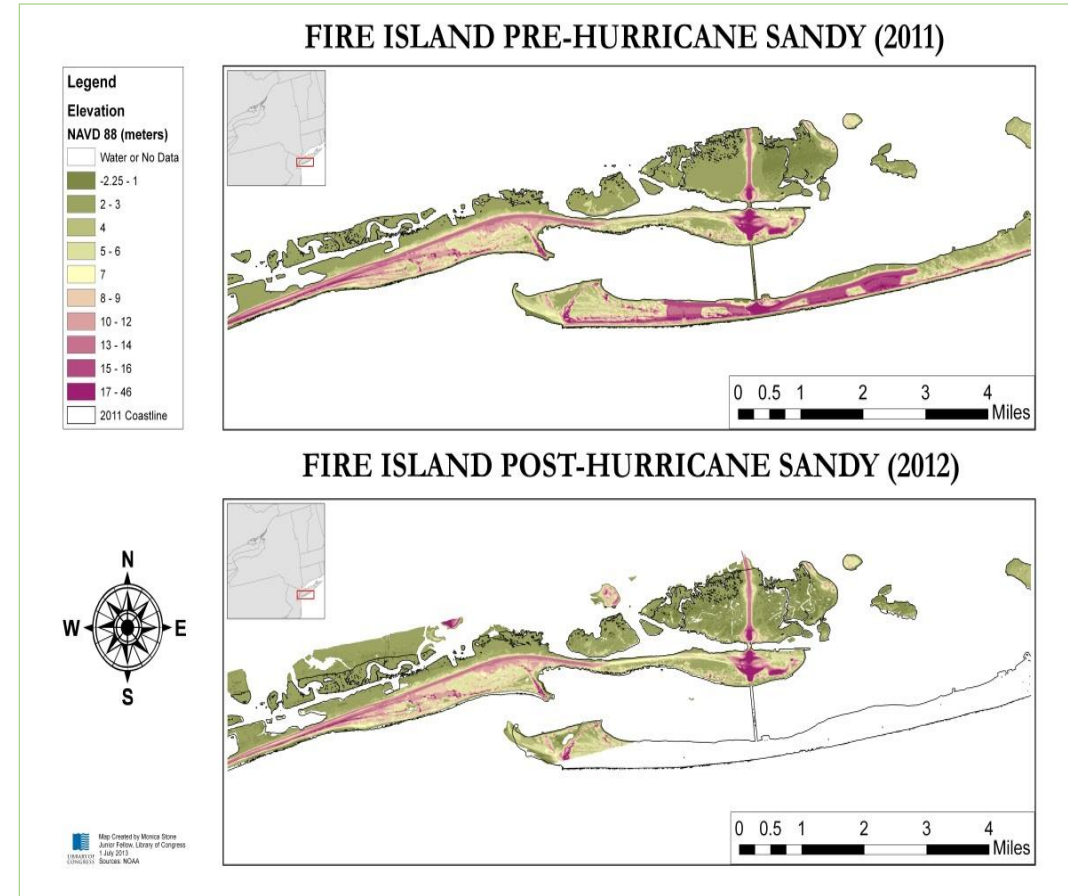
# Historical Metadata and GIS Mapping

- Develop geospatial projects using our historical metadata.
- Cataloging Map visualizes country by the LC Classification numbers.
- Includes: General, Subject, Regions, Natural features, Provinces, Cities and towns.



# Congressional Cartography and GIS Mapping

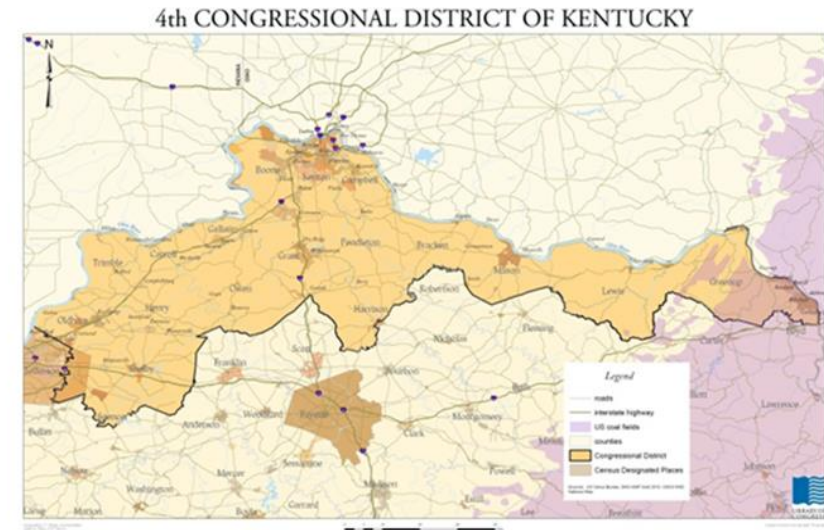
- Specialized Cartographic & GIS program for Congress
- Advances the legislative decision-making process using geographic theory & spatial data analysis
- Engages Congressional staff with mapping and data analysis





# Congressional Cartography and GIS Mapping

- Custom Maps & Analysis:
  - “What is in my District?”
  - Report maps to communicate issues
  - Global scope of research
  - Authoritative, confidential
- Sources (Federal, Academic, OS)
  - Historic materials from LC/G&M
  - Incorporating federal standards
    - GNIS: <http://geonames.usgs.gov/domestic/>
    - GNS: <http://geonames.nga.mil/gns/html/>



Geography and Map

# Historical Research and GIS Mapping

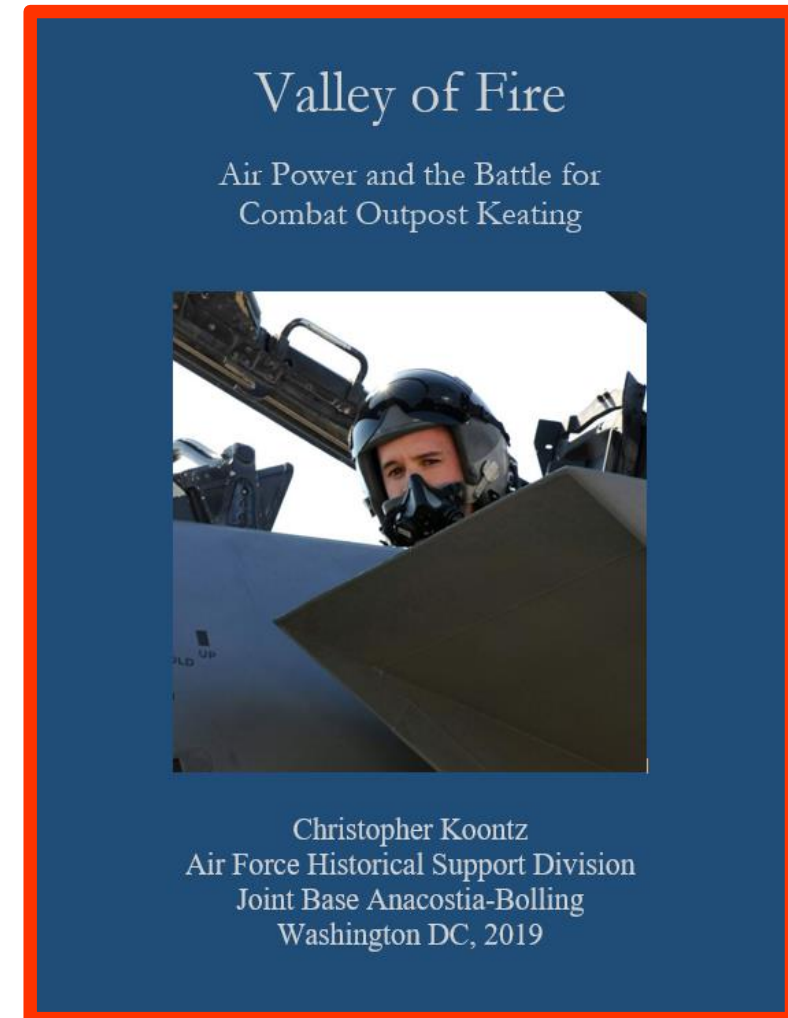
---

Dr. Christopher Koontz, USAF Historian

# Experiences of an End User: Applying GIS to Historical Research and Writing

---

- Enables relevant scholarship for military and academic communities
- Ease of use for researchers with varying levels of technological skill
- Test case: “Valley of Fire,” 2019 study of the role of air power during a major engagement in Afghanistan



# The Battle for Combat Outpost Keating: October 3, 2009

---

- Complex assault by Taliban that turned into a daylong firefight
- Close Air Support by USAF “critical” to saving the outpost from being overrun
- Little reporting or research on employment of air power





# Source Materials: Discoveries and Challenges

## BATCAVE AIR – mIRC log

Session Start: Sat Oct 03 00:00:01 2009

Session Ident: #batcave\_air

[01:03] <afcent\_msg> \* CHAT CLASSIFIED UP TO ~~SECRET//REL USA,CAN,AUS,GBR~~ \*

[01:13] \* Darknight\_OPS is now known as Darknight\_OPsAFK

[01:33] <Darknight\_35> TIC/DARKNIGHT 34/GN33/92CU3/42S YE 115 224 /IDF/ HAVE AIRCRAFT CHECK IN OVER FOB BOSTICK

[01:36] <Darknight\_34> Update: COP Keating/Op Fritsche are taking heavy contact mortars and heavy machine gun fire.

[01:37] <Darknight\_OPsAFK> c

[01:37] <Darknight\_OPsAFK> stdby for a/c and eta

[01:43] <Darknight\_OPsAFK> c

[01:43] <Darknight\_34> ROZ BATTLEKING GUNS HOT ATT/ FOB BOSTICK 155MM\_ YE 116 198/ GTL:315/ MAX ORD 66K

[01:43] <Darknight\_OPsAFK> c

[01:46] <Darknight\_34> Need eta for (2) Higs we have take 2 x casualties.

[01:47] <Darknight\_OPsAFK> c working

[01:47] <Darknight\_34> c

[01:51] <Darknight\_OPsAFK> 9mins eta DE25

[01:51] <Darknight\_OPsAFK> TIC IO ISAF# 0212

- Evidence collected by official investigators (redacted material available via CENTCOM FOIA @ [www3.centcom.mil](http://www3.centcom.mil))
- Documents collected by deployed USAF historians
- Personal research (emails, interviews, Intellink data mining)
- Published material (Tapper's *The Outpost*, Romesha's *Red Platoon*)

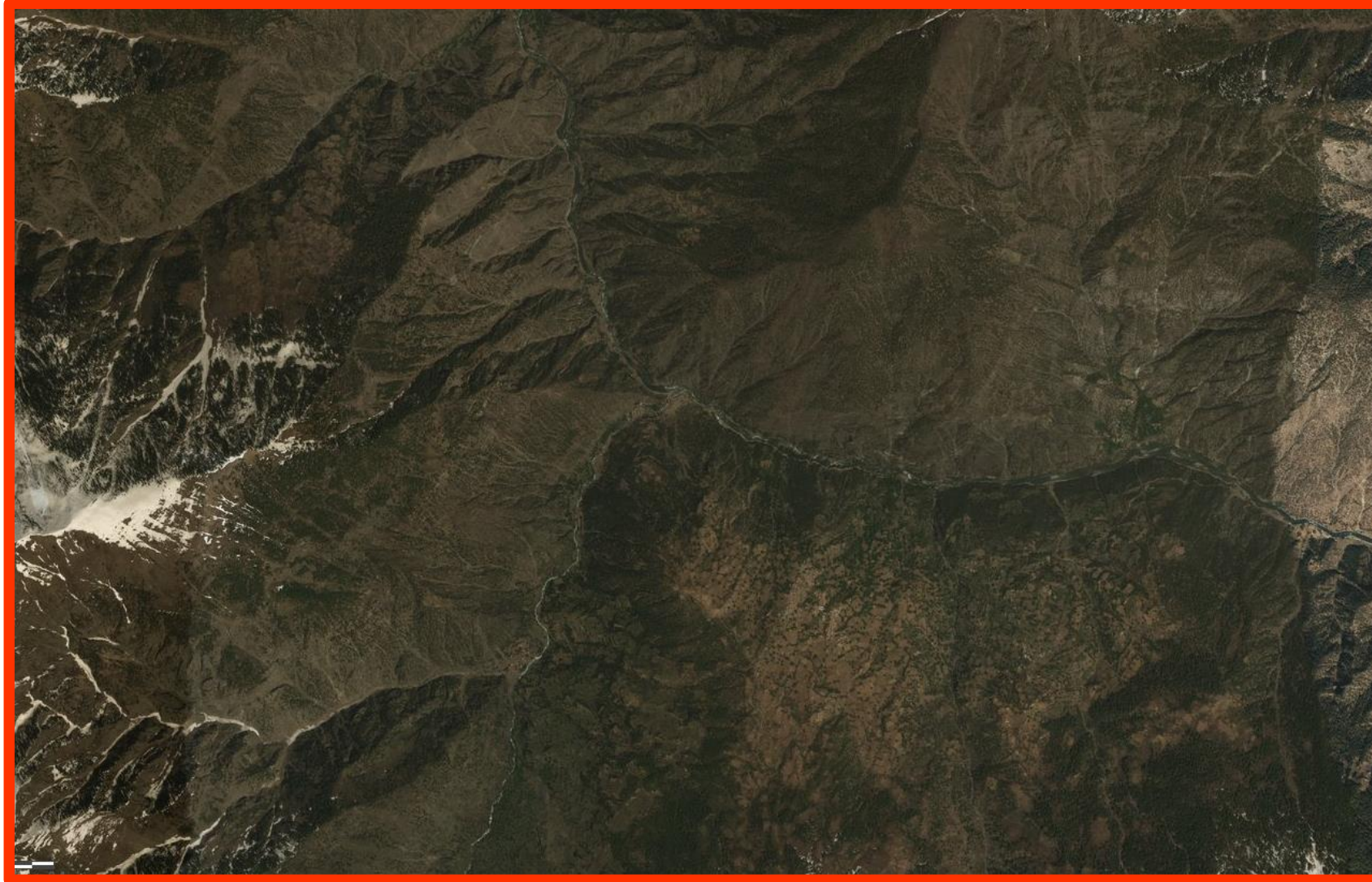
# GIS and Online Resources Used

---

- Classified: National Geospatial-Intelligence Agency (NGA), Map of the World
- Unclassified:
  - GIS
    - ArcGIS: <https://www.arcgis.com/home/webmap/viewer.html>
    - Google Maps: <https://www.google.com/maps>
  - Reference and Data Conversion
    - Legal Land Converter: <http://legallandconverter.com/p50.html>
    - Earth Point: <http://www.earthpoint.us/Convert.aspx>
- Reachback expertise @ NGA and Library of Congress

# The Kamdesh Valley, Nurestan, Afghanistan

---



<https://www.arcgis.com/home/webmap/viewer.html>



# COP Keating and Ormol Village

---

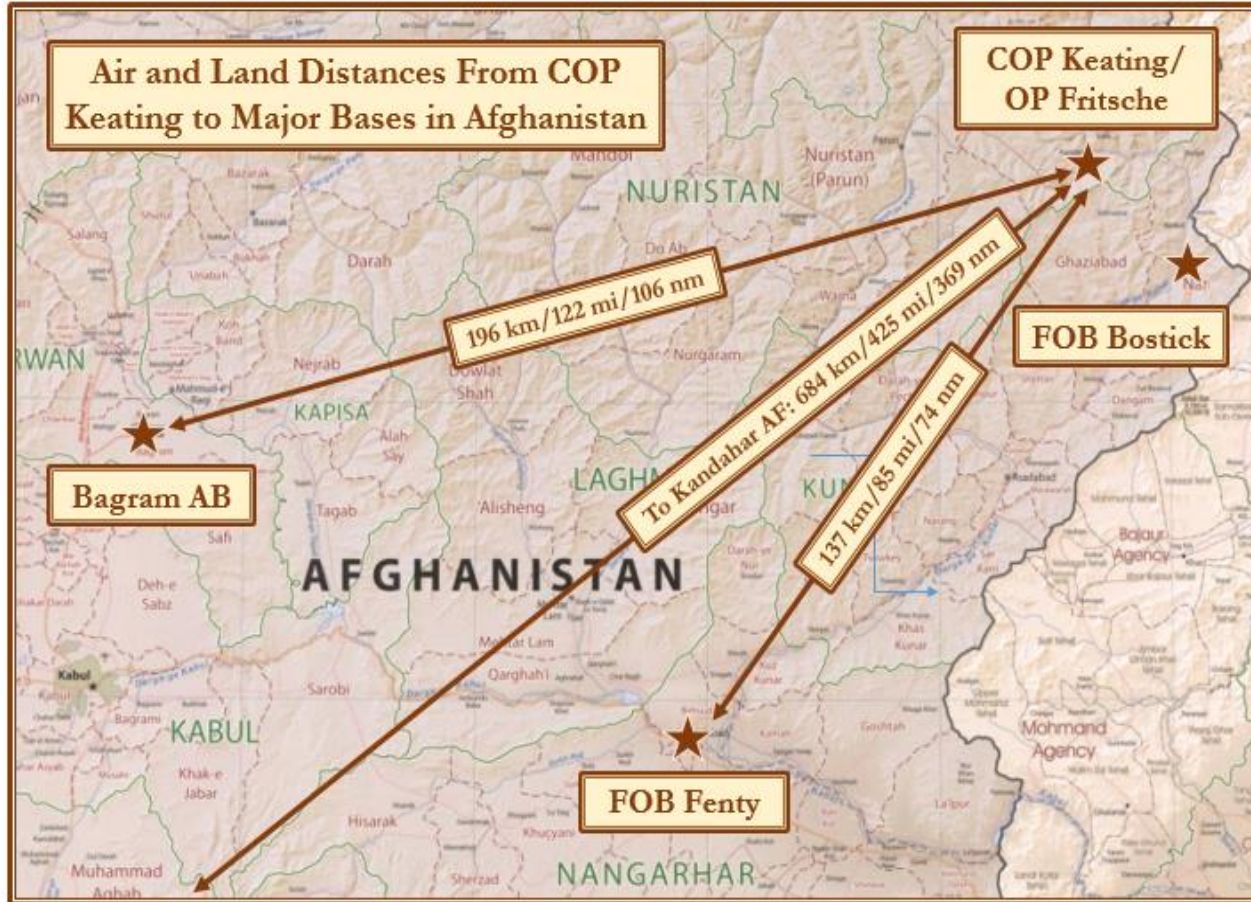


<https://www.arcgis.com/home/webmap/viewer.html>



# Using GIS to Overcome Challenges

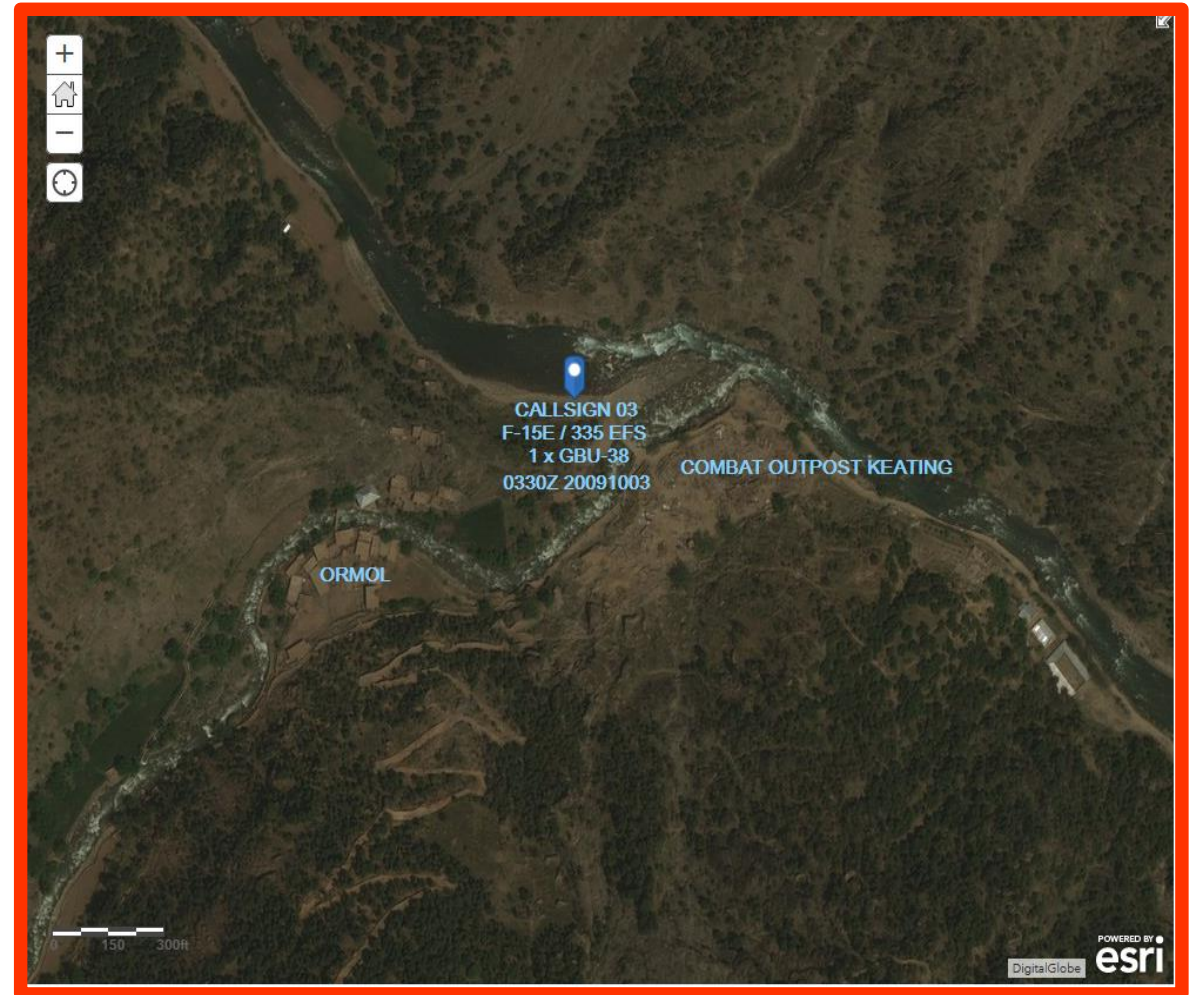
$$d = r \times t$$



- Solved question of initial aerial response
  - Over 20 minutes between dispatch of first aircraft (2 x F-15E) and arrival – why?
- Confirmed urgent dispatch of subsequent flights
  - Supersonic transit of B-1 bomber
  - Near-maximum transit of A-10 attack planes (450 nm/hr)

# Using GIS to Overcome Challenges: *So, what happened?*

- Employed GIS to chart weapons expenditures using NGA Map of the World
  - Confirmed 100% strikes consistent with rules of engagement and JTAC instructions
  - Demonstrated when potentially catastrophic errors were detected and corrected
  - Demonstrated intensity and urgency of strikes as engagement progressed



n.b. – Image is notional.



# Summing Up

---

- GIS data is embedded in our source materials now – take advantage of it!
- Provides hard data for interpretation of events and context for extrapolation and second-order inference
- Basic resources are easy to use and largely budget-neutral



# Concluding Thoughts

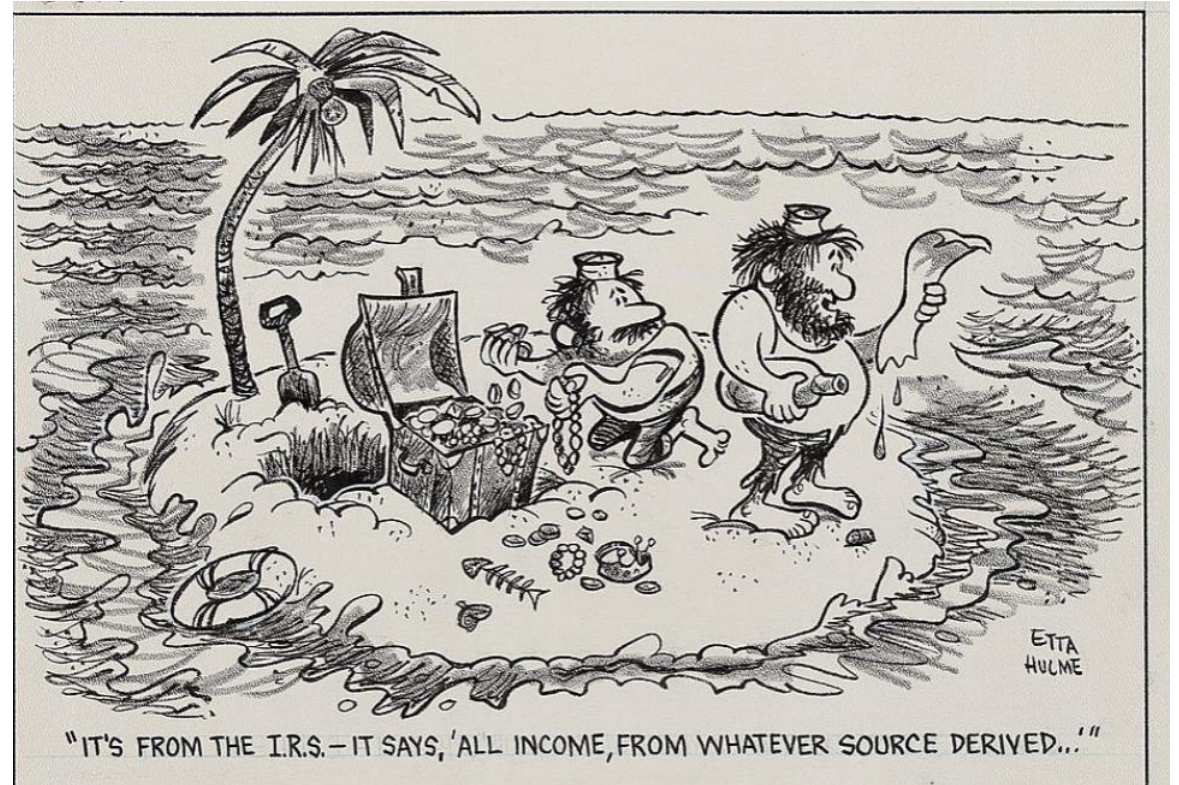
---

Dr. Paulette Hasier, Library of Congress



# Adoption and Items for Consideration

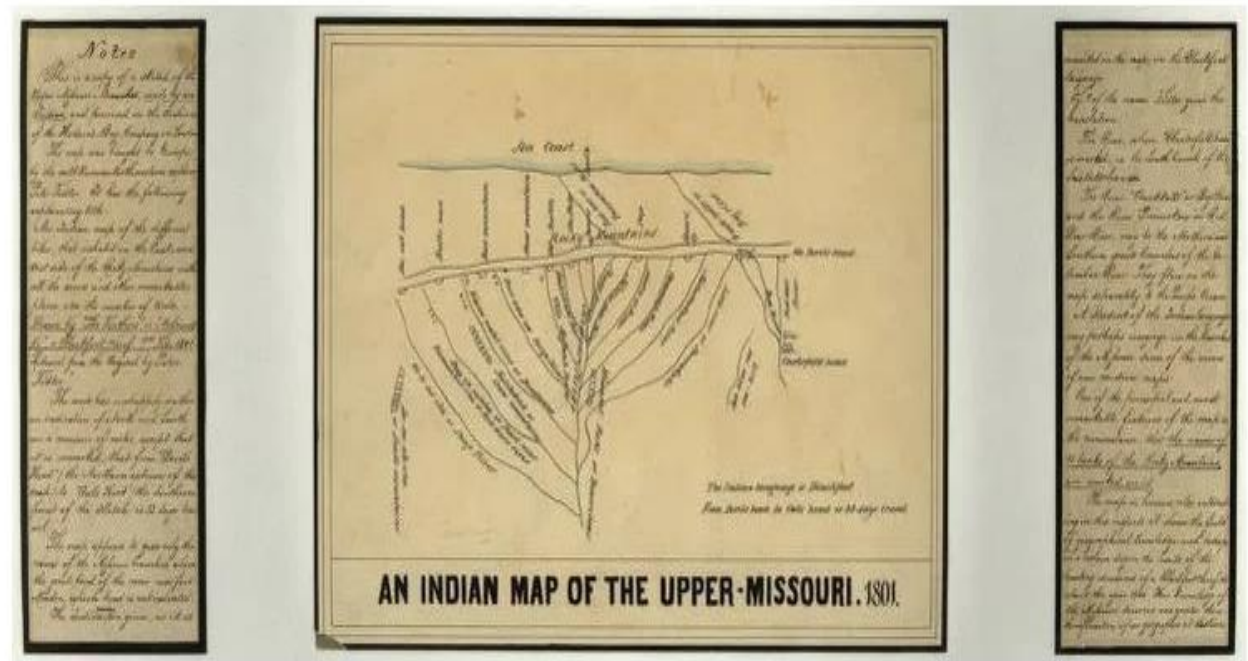
- Leverage existing technology
- Engage Stakeholders
- Solicit Participation
- Build a Buzz
- Answer Questions
- Address Policy Concerns



<https://www.loc.gov/resource/ppmsca.04613/>

# Challenges and the Way Forward

- Strategic Alignment
- Expand the Model
- Plan but have Patience
- Testimonials---Kudos
- What's next?
- Questions???



<http://chi.anthropology.msu.edu/2019/11/the-geospatial-west-georectifying-historical-native-american-space/>