

1.2 CRC CEUs



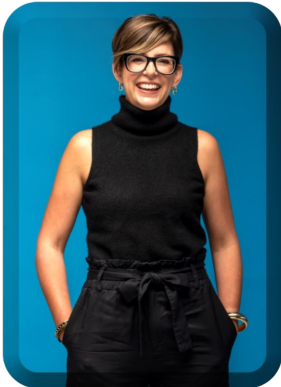
What is the state of the real estate market and where is it heading? This event will expand upon what has happened post-covid, current economic conditions, and forecasts for the various property types. We are pleased to have, Kian Kamas, Executive Director of Partner Tulsa and a representative from Scheels, share their insights into the market. There will be Q&A after the presentation to answer your questions.

SCHEELS
gear. passion. sports.

Scheels
The Fargo, North
Dakota headquar-
tered company

and sporting goods store, is an employee owned compa-
ny that prides itself on great customer service and expert
knowledge of the products being sold. Scheels recently
announced their plans to invest more than \$100 million
investment. Tulsa SCHEELS will be a destination for fun
with plenty of family-friendly attractions for all ages.
These include a 45-foot Ferris wheel, a 16,000-gallon
saltwater aquarium with more than 600 fish, a wildlife
mountain, Fuzziwig’s Candy Shop, and more. Shoppers
will have the opportunity to enjoy interactive arcade
games, sports simulators, and specialty treats at Ginna’s
Café, a restaurant serving gourmet soups and sandwich-
es, homemade fudge, and specialty coffee.

Tulsa SCHEELS will employ more than 450 associates, all
employee-owners, who look forward to bringing their
experience and enthusiasm to the community. Tulsa is
SCHEELS 34th location, with 30 existing stores, two
scheduled to open in 2023, and a third opening in the
spring of 2024. SCHEELS is excited to start serving the
Tulsa community when the doors open in the fall of
2024.



Kian Kamas serves as
the Executive Director of
Partner Tulsa, leading
Tulsa’s comprehensive
community and economic develop-
ment strategy and a team of tal-
ented professionals dedicated to
increasing economic opportunity
for Tulsa residents. Prior to this
role, she served as Mayor G.T.
Bynum’s Deputy Chief and then
Chief of Economic Development.
Before her work at the City, Kian
spent six years at the Tulsa Region-

al Chamber, in various roles in Economic Development and Govern-
ment affairs. Kian is passionate about creating long-term, institu-
tional change in how Tulsa pursues its economic and community
development objectives, and is committed to building a world-class
and sustainable operating model that provides Tulsa with strong
and stable long-term revenues for this work. She loves crazy ideas
and tries to encourage out-of-the-box thinking and a collaborative
approach to problem-solving amount TAEO’s staff. Kian holds a
Bachelors Degree in Political Science from the University of Oklaho-
ma, a Masters Degree in Comparative Public Policy from the Univer-
sity of Edinburgh and has completed the University of Oklahoma’s
Economic Development Institute. She and her husband Lathem
have lived in Tulsa, Oklahoma since 2009 and are raising their son
Leith as a proud Tulsan.

[REGISTER TODAY](#)

[APRIL 19, 2023](#)

11:30 a.m. to 1:00 p.m.

Tulsa Country Club, 701 N Union, Tulsa, OK

Member \$35.00 Non-Member \$40.00



Upcoming Events



[Save the Date - Watch for Details in upcoming Emails](#)

5/10/23-The Inflation Challenge: Perspectives of Fed Dissenter Thomas Hoenig

5/11/23—Oil & Gas Lending Educational Event

[Click to Access Chapter Newsletters](#)

Keep in Touch
in  

Employees of institutional members can
now opt-in to membership for **FREE**.
Apply and learn about Key Member
Benefits [here](#):

Become an
RMA Member