

## **Play It, Don't Say It**

Put your knowledge of tempo, dynamics and articulation terms, symbols and marks to work. Find a partner and play with two, or divide your class into two teams. Copy the Expression Flash Card Set (find it at [www.ptg.org/learningcenter](http://www.ptg.org/learningcenter)) onto cardstock, cut out the cards and glue the front and back sides together (or make a two-sided copy). One player sits at the piano and demonstrates the tempo, dynamic or articulation item marked on the card that the other player holds up. Definitions are on the back of the card. Keep going until you miss one, then switch places. See if both players (or teams if you have a group) can make it through the whole deck of cards.

*Visit [www.ptg.org/learningcenter](http://www.ptg.org/learningcenter) to find more learning resources for students, parents and teachers. © 2009 Piano Technicians Guild*



**Play It, Don't Say It**

*Card Front 1*

*p*

*f*



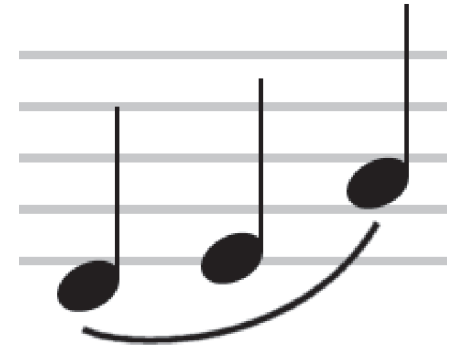
**Play It, Don't Say It**

*Card Front 2*

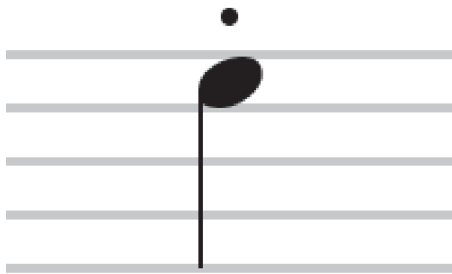
top



top



top



*mf*

**Play It, Don't Say It**

*Card Front 3*

*Largo*

*Allegro*

*Andante*

*Con brio*

*Doloroso*

*Marcia*

**Piano**  
**Soft**

**Forte**  
**Loud**

**Bass Clef**  
**Lower keys**

**Fermata**  
**Hold**

**Trill**  
**Alternate**  
**2 notes**

**Treble or**  
**G Clef**  
**Upper keys**

**Crescendo**

**Gradually  
louder**

**Decrescendo**

**or diminuendo  
Gradually  
softer**

**Legato**

**Smooth &  
connected**

**Staccato**

**Short,  
separate**

**Accent**

**Emphasize**

**Mezzoforte**

**Medium  
loud**

**Slow &  
Broad**

**Cheerful**

**Walking**

**Spirited**

**Sadly**

**March**