



INSTITUTE FOR SOCIAL RESEARCH • SURVEY RESEARCH CENTER  
**PANEL STUDY OF INCOME DYNAMICS**  
UNIVERSITY OF MICHIGAN

# PSID and COVID-19

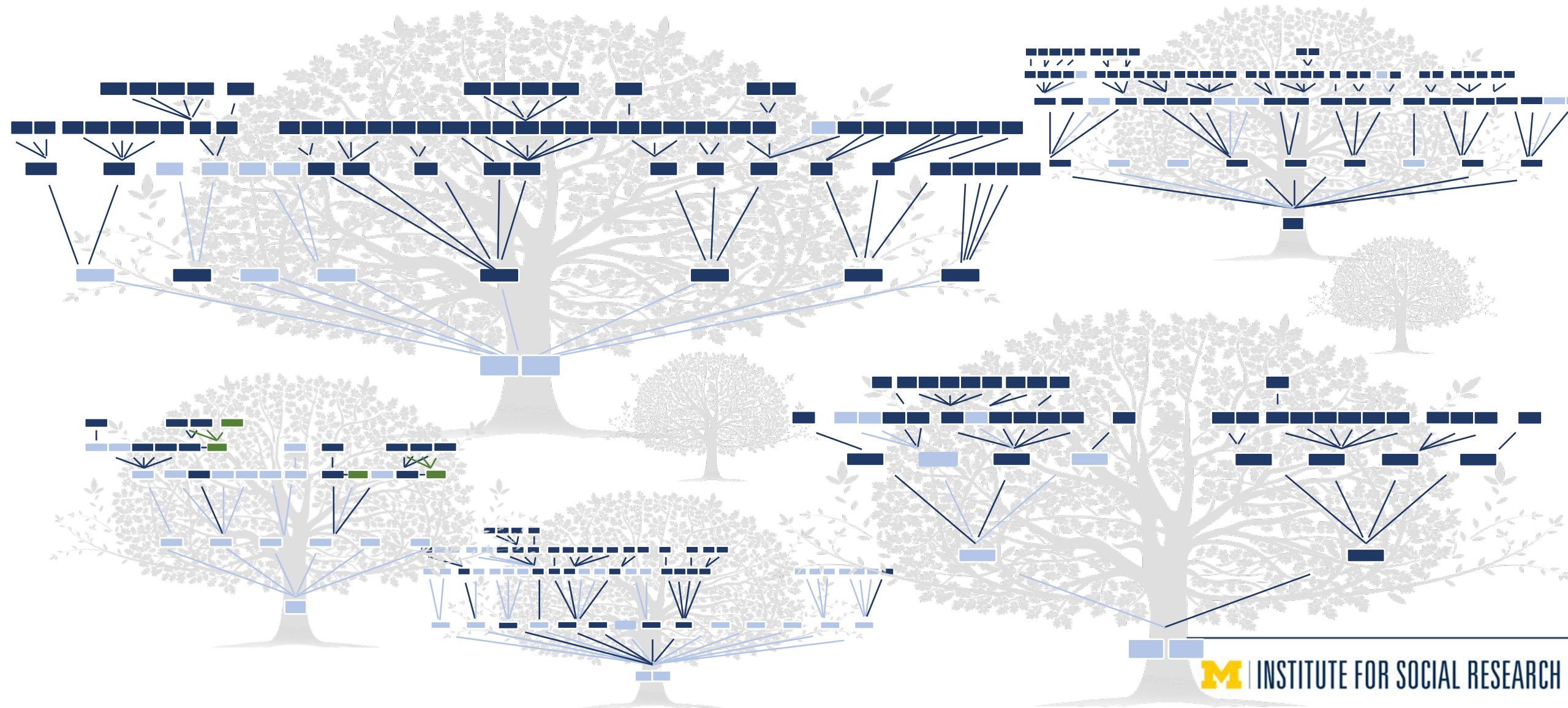
David S. Johnson  
University of Michigan

PAA COVID-19 Webinar  
Data Collection in Longitudinal Studies  
June 23, 2020

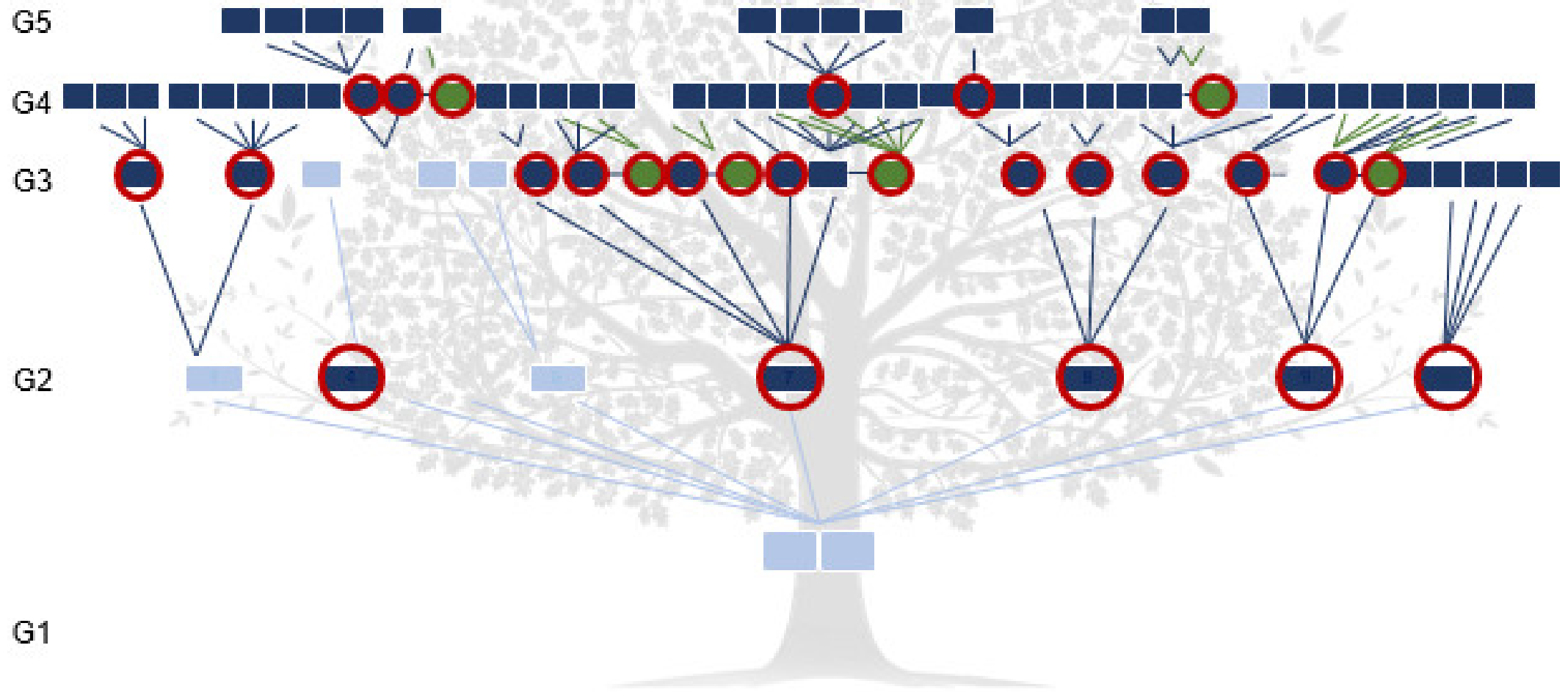
@umpsid; [www.psid.org](http://www.psid.org)



# Multiple Generations & Many Family Trees

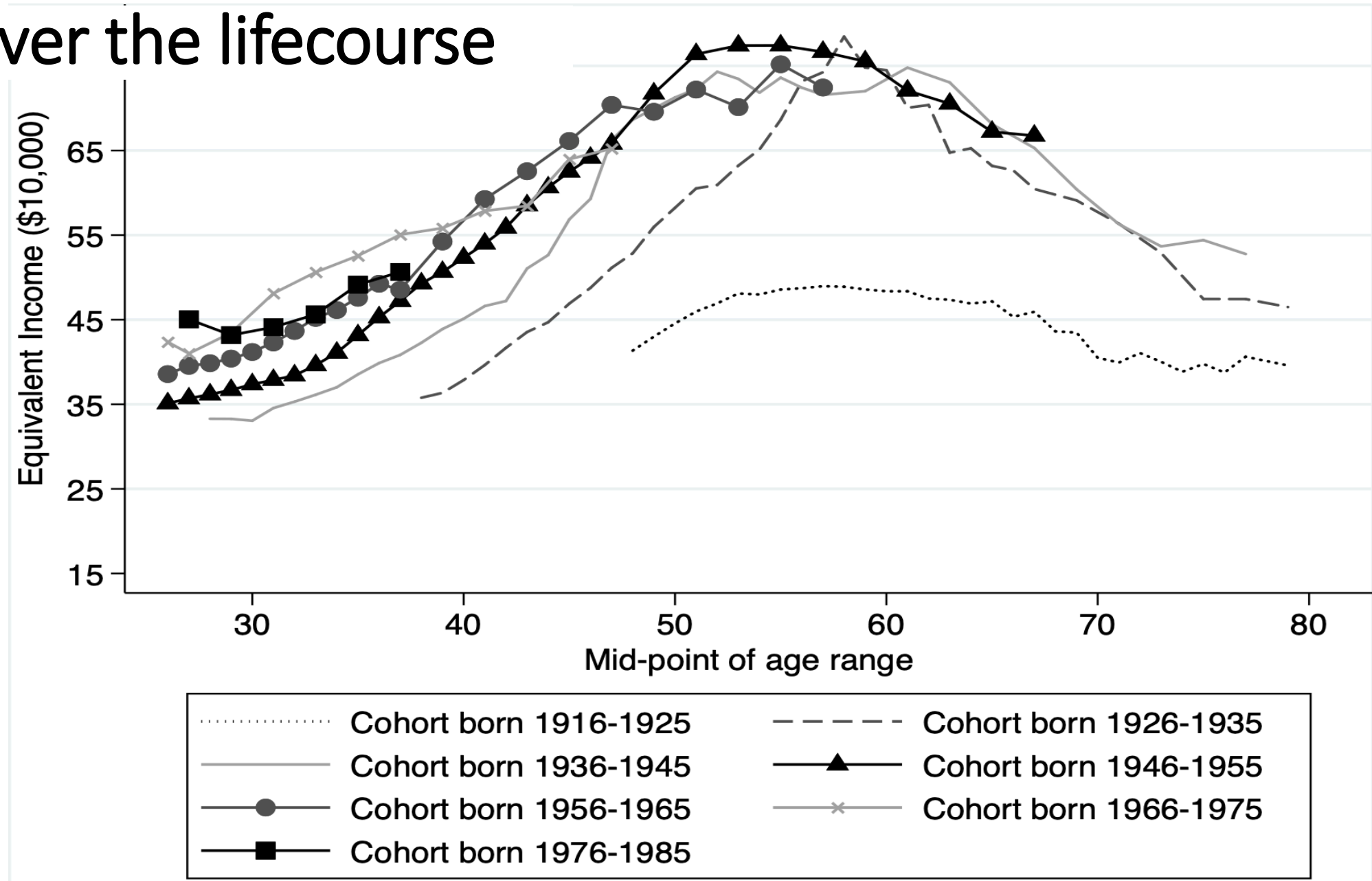


# Multiple Families in a Family Tree



# Measures over the lifecycle

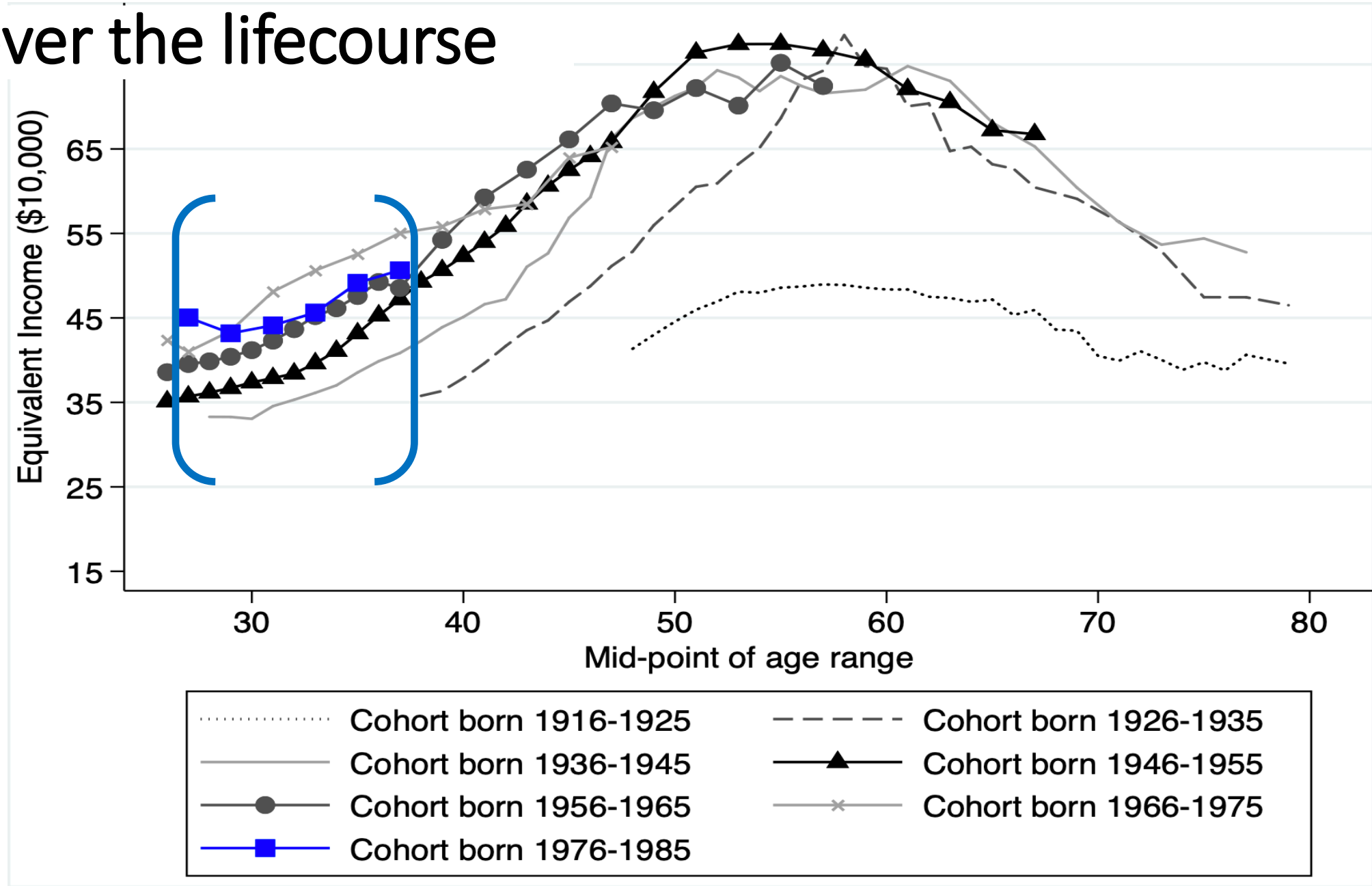
Age-income  
profile  
by cohort



Source: Fisher, J. and D. Johnson, "Inequality and mobility over the past half century using income, consumption and wealth," forthcoming in NBER volume

# Measures over the lifecycle

Age-income  
profile  
by cohort

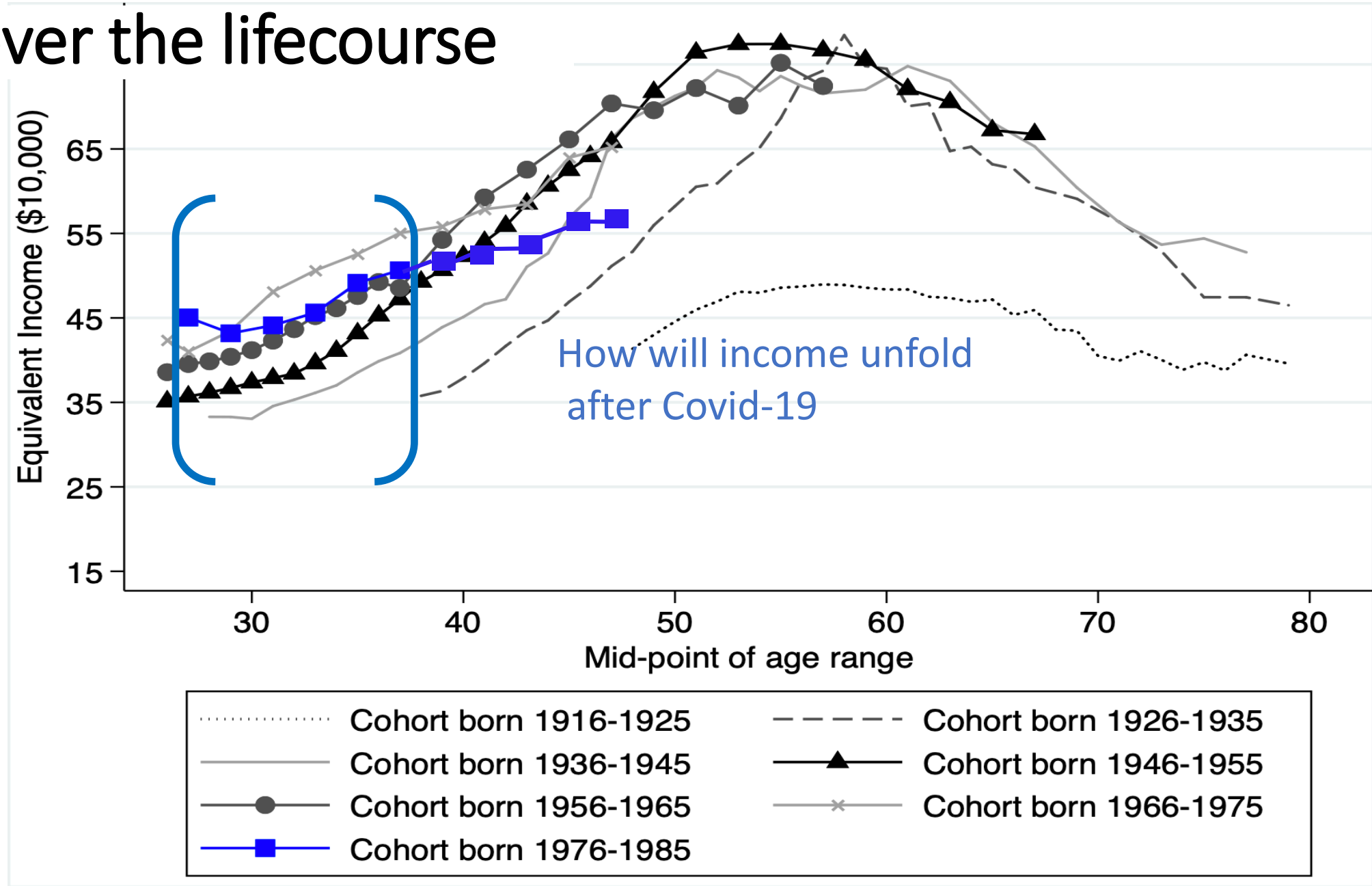


Source: Fisher, J. and D. Johnson, "Inequality and mobility over the past half century using income, consumption and wealth," forthcoming in NBER volume



# Measures over the lifecycle

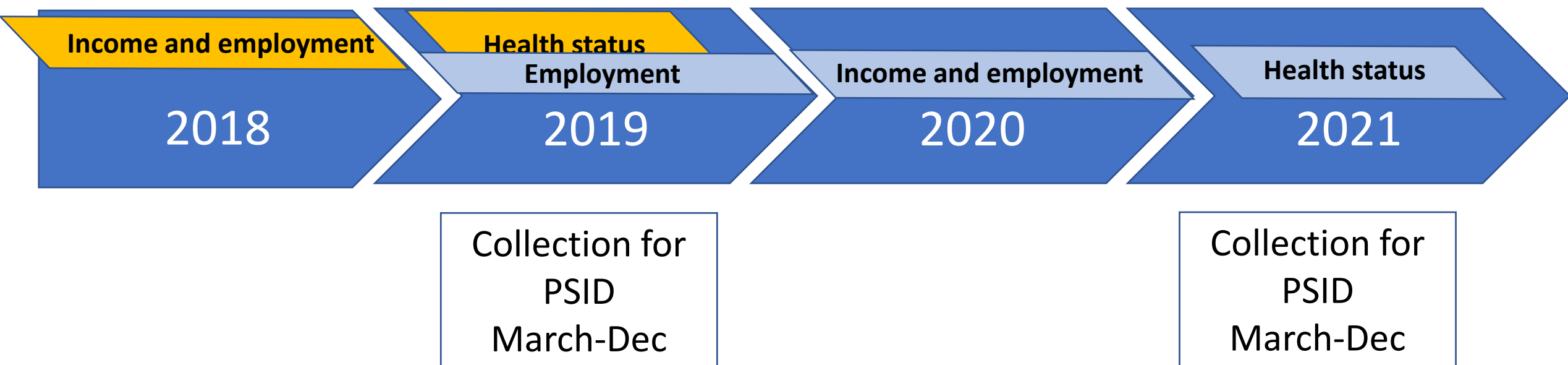
Age-income  
profile  
by cohort



Source: Fisher, J. and D. Johnson, “Inequality and mobility over the past half century using income, consumption and wealth,” forthcoming in NBER volume

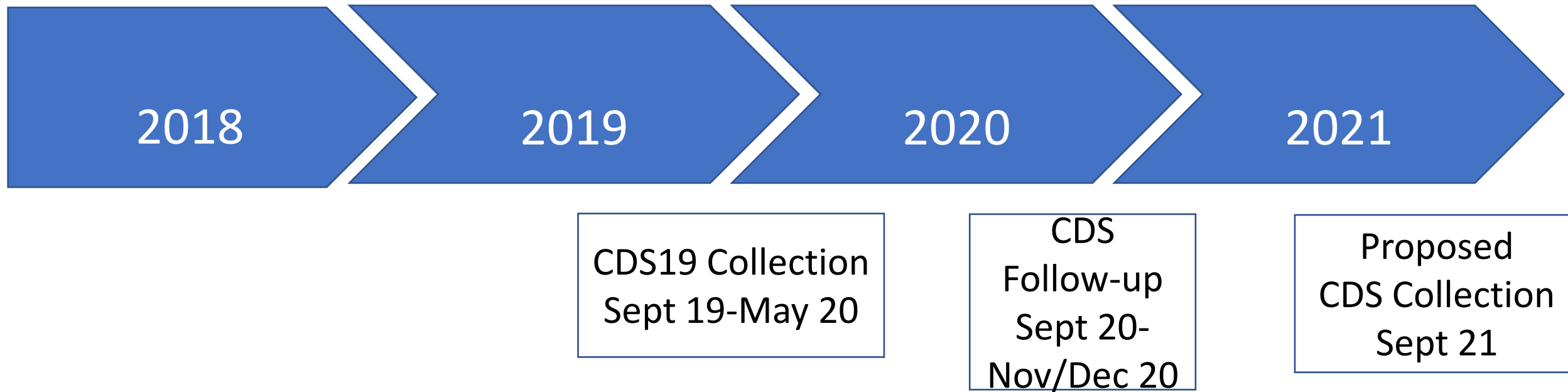
# Timing of data

PSID: Before, during and after pandemic



# Timing of data

## Child Development Supplement: Before, during and after





# Wide Array of Variables

- Employment
- Income
- Expenditures
- Wealth
- Time Use
- Education
- Transfer Programs
- Housing
- Inter-family transfers
- Physical & Mental Health
- Marriage & Fertility History
- Household Composition
- Computer Use
- Migration
- Philanthropic Giving
- Food Security

Plus Child Development Supplement measures of child well-being

# Covid-19 Questions: Exposure to Covid-19

- Have you been tested?
- Have you talked to a doctor about whether you may have had Covid-19?
- Did they say that you definitely/probably/did not have Covid-19?
- Did you have symptoms that led you to believe you had Covid-19?
- What type of test?
- Did the test indicate you had the coronavirus?
- Were you admitted to a hospital

# Covid-19 Questions: Financial impact

Which of the following did your family do to manage any financial difficulties due to the pandemic:

- Reduce spending
- Use savings
- Put off paying the rent/mortgage
- Use credit card
- Use retirement savings
- Obtain help from family
- File for unemployment
- Take out a loan

Did you... receive stimulus payment or forgivable PPP loan, work from home, lose earnings  
Were you... furloughed; an essential worker

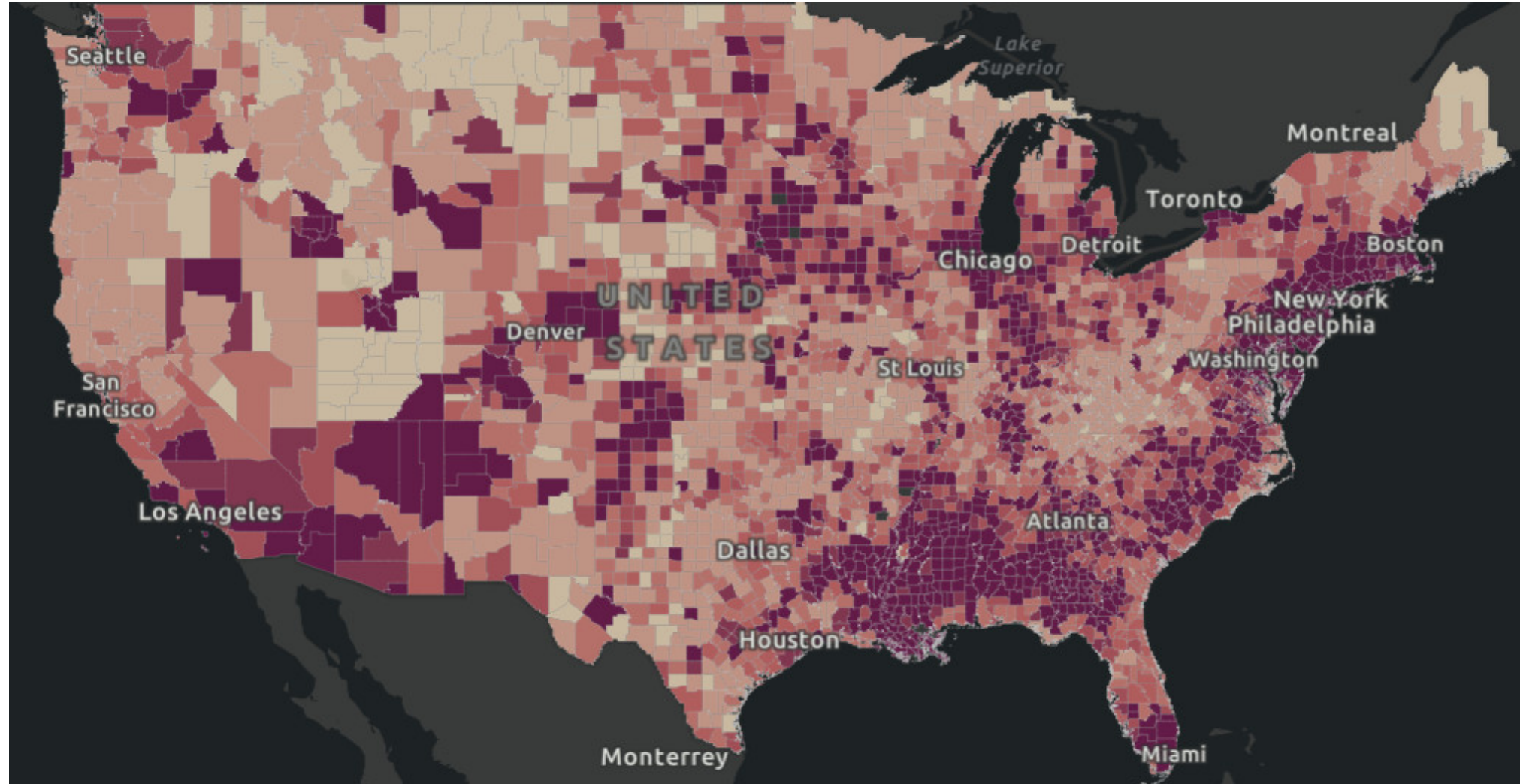
# Summary of Covid-19 Content

	Sample	Covid-19 Content	Collection period	Data release
<b>PSID21</b>	Entire sample (~10000 families)	Health, financial	March 2021-Dec 2021	Early release Jan 2022
<b>CDS19 follow-up</b>	Select families from CDS19	Health, financial + child education and activities	Sept 2020-Nov/Dec 2020	Early release; early 2021

Data available at [www.psid.org](http://www.psid.org)

Survey coming soon to <https://micda.isr.umich.edu/research/covid-19/>

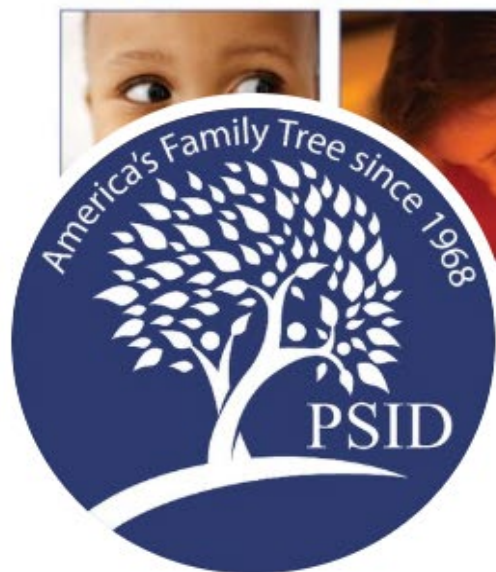
PS: Can include contextual variables by geographic location – Covid-19 cases by county



Source: Johns Hopkins University Coronavirus resource center



Learn more at [www.psid.org](http://www.psid.org) and @umpsid



**PSID**

@umpsid

Panel Study of Income Dynamics

University of Michigan [psid.org](http://psid.org)

1,081 Following 1,357 Followers



**PSID** @umpsid · 17h

Congratulations to [@christinajcross](#), who received the [@PopAssocAmerica](#) 2020 Dorothy S. Thomas graduate student paper award for "Racial/Ethnic Differences in the Association Between Family Structure and Children's Education" using [@umpsid](#) data. [@JMF\\_NCFR:bit.ly/358Y3bT](https://bit.ly/358Y3bT)

FIGURE 1. PREDICTED PROBABILITIES OF ON-TIME HIGH SCHOOL COMPLETION BY PROPORTION OF CHILDHOOD SPENT WITH A SINGLE MOTHER—DIFFERENCES BY RACE/ETHNICITY.

