



CENTER FOR STUDIES IN DEMOGRAPHY & ECOLOGY

UNIVERSITY of WASHINGTON

Sara Curran, PhD, Director

My current research addresses:

Basic research:

1. How will climate change impact populations and communities? How do mitigation and adaptation efforts change those impacts?
2. How are immigrants and refugees incorporated into societies? How do migration systems influence subsequent likelihood of migration?

Research capacity building:

3. How can demographic data be made more accessible for forecasting population change to help practitioners and policy makers prepare?
4. How can we enhance training for next generation of population and health scientists?
5. How can we improve the research infrastructure for scientists and continue to advance new knowledge in population health sciences? How can we best facilitate the translation of that work?

Examples of federally funded data sets I use:

1. **Agency:** U.S. Bureau of Economic Analysis

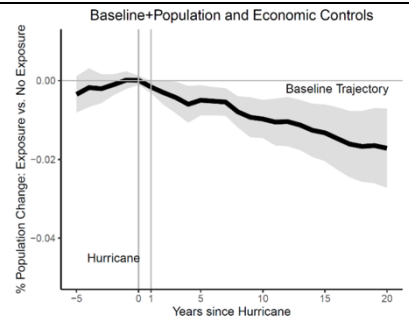
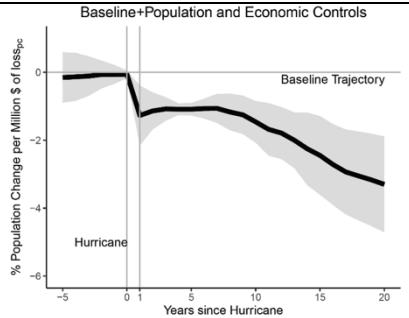
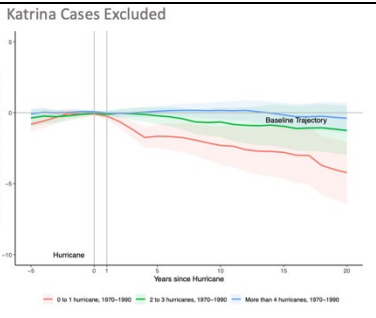
Data: Full and Part-Time Employment Data by Industry from 1970-present

Agency: U.S. Census Bureau

Data: County population counts from 1970-present

Agencies: National Climatic Data Center, National Centers for Environmental Information, US Department of Agriculture, US Geological Survey, NASA, FEMA, US Bureau of Labor Statistics

How do county populations' change in response to hurricane shocks?

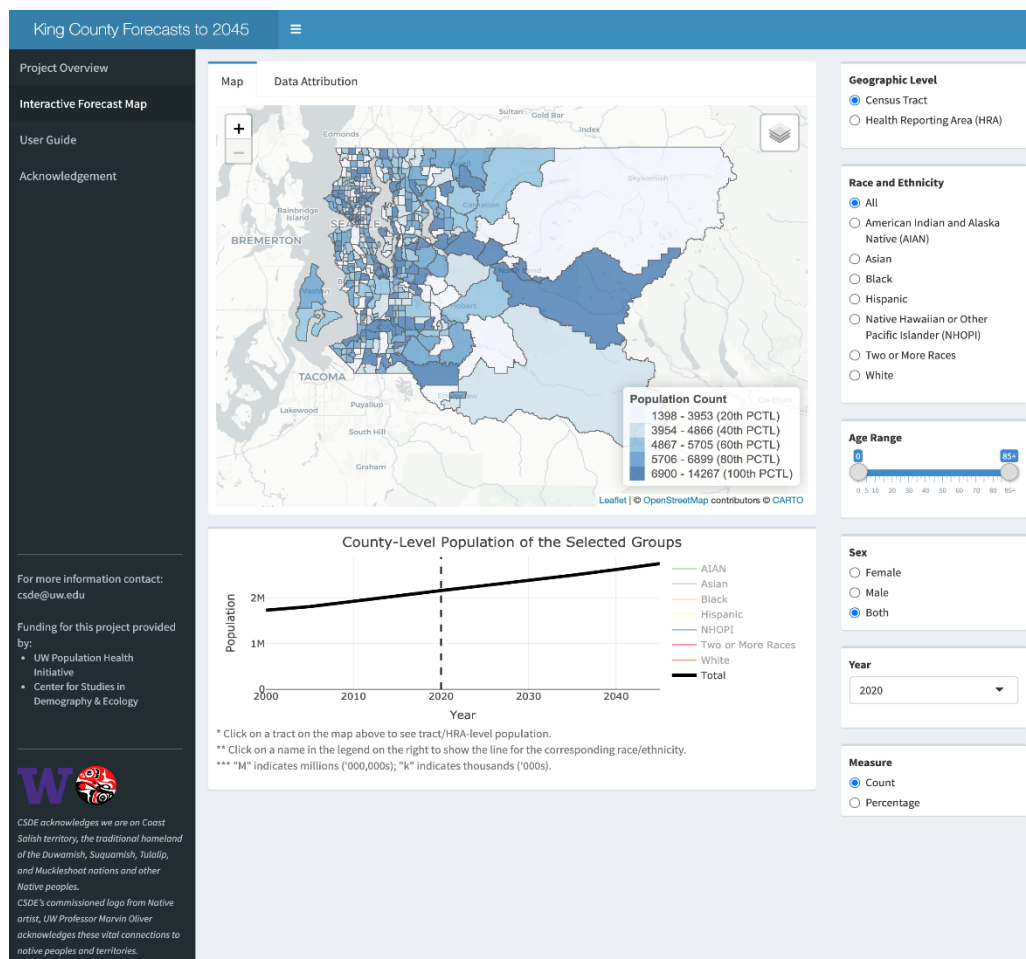
Estimating Short- and Long-Term Effects on Population Change Resulting from Hurricane Exposure in U.S. Counties, 1970-2018, Population Association of America Annual Meetings, May 2021		
a. Impact from any hurricane	b. Impact from costly hurricane	c. Impact depends on prior exposure to hurricanes
 <p>Baseline+Population and Economic Controls</p> <p>% Population Change: Exposure vs. No Exposure</p> <p>Baseline Trajectory</p> <p>Hurricane</p> <p>Years since Hurricane</p> <p>Small but study cumulative excess population decline</p>	 <p>Baseline+Population and Economic Controls</p> <p>% Population Change per Million \$ of losses</p> <p>Baseline Trajectory</p> <p>Hurricane</p> <p>Years since Hurricane</p> <p>Initially large and then steady excess population decline</p>	 <p>Katrina Cases Excluded</p> <p>% Population Change: Exposure vs. Exposed Hurricane</p> <p>Baseline Trajectory</p> <p>Hurricane</p> <p>Years since Hurricane</p> <p>More exposure to hurricanes diminishes population impact</p>

Training and Research Capacity Building

I direct the CSDE, which is funded by the National Institutes of Health, *Eunice Kennedy Shriver National Institute of Child Health and Human Development*. (I was also an *NIH Trainee* at the Carolina Population Center, UNC at Chapel Hill)

CSDE provides:

- Computing and consulting infrastructure, accelerating research for impact.
- Support for 166 faculty at the University of Washington and 80 graduate students.
- Support for the research of almost 100 non-UW research affiliates.
- Major projects include:
 - **The Minimum Wage Project (MWP) and the Washington Merged Longitudinal Administrative Agency Data (WMLAAD)**
 - **Impacts of COVID**
 - *Transmission of COVID-19 via Breastfeeding*
 - *Investigating Health and Information Disparities during COVID-19 Pandemic*
 - **Population Forecasting for State and County Planners and Policymaking**



Sara R. Curran, Director
 206 Raitt Hall
 Box 353412, Seattle, WA, 98195-3412
 email: csde@uw.edu • ph: 206-616-7743
<https://csde.washington.edu/>

CSDE acknowledges we are on Coast Salish territory, the traditional homeland of the Duwamish, Suquamish, Tulalip, and Muckleshoot nations and other Native peoples.

CSDE's commissioned logo from Native artist, UW Professor Marvin Oliver acknowledges these vital connections to native peoples and territories