

# NOW APPROVED FOR THALASSEMIA



## Transforming Thalassemia Treatment With AQVESME™

### PROGRAM OVERVIEW

100 years after the discovery of the disease, discover how **AQVESME** can change the thalassemia treatment paradigm. This program will review the efficacy and safety profile of **AQVESME** in adults, the **ONLY** treatment for anemia in **BOTH** non-transfusion-dependent (**NTD**) and transfusion-dependent (**TD**), **α**- or **β**-thalassemia.

### PROGRAM INFORMATION

Tuesday, March 31, 2026

6:00 PM ET - Start Time

Please arrive 5-10 minutes early for sign-in to ensure the presentation can start on time.

Black & Blue Steak & Crab

3349 Monroe Ave, Rochester, NY 14618

### FACULTY PRESENTER

Susan Carson, NP

Nurse Practitioner III, Thalassemia and Chronic Transfusion Program

Children's Hospital Los Angeles

Los Angeles, CA

Faculty are paid speakers presenting on behalf of Agios Pharmaceuticals, Inc.

See Attendee and Reporting Policy on next page.



## Click or Scan the QR Code to Register Now!

Or contact your Agios Program Host

David Bird [david.bird@agios.com](mailto:david.bird@agios.com)

α, alpha; β, beta.

#### INDICATION

AQVESME is indicated for the treatment of anemia in adults with alpha- or beta-thalassemia.

#### IMPORTANT SAFETY INFORMATION

##### BOXED WARNING: HEPATOCELLULAR INJURY

AQVESME can cause serious hepatocellular injury. Measure liver laboratory tests (ALT, AST, alkaline phosphatase and total bilirubin with fractionation) at baseline and every 4 weeks for 24 weeks and then as clinically indicated. Avoid use of AQVESME in patients with cirrhosis. Discontinue AQVESME if hepatic injury is suspected.

Because of the risk of hepatocellular injury, AQVESME is available only through a restricted program under a Risk Evaluation and Mitigation Strategy (REMS) called the AQVESME REMS.

Please see additional Important Safety Information on next page and accompanying Full Prescribing Information for AQVESME, including Boxed Warning.

## IMPORTANT SAFETY INFORMATION (cont'd)

### WARNINGS AND PRECAUTIONS

#### Hepatocellular Injury

AQVESME can cause hepatocellular injury. Avoid use of AQVESME in patients with cirrhosis. In patients with thalassemia treated with AQVESME, liver injury with and without jaundice has been observed within the first 6 months of exposure. Obtain liver tests (including ALT, AST, alkaline phosphatase, total bilirubin with fractionation) prior to the initiation of AQVESME, then every 4 weeks for the first 24 weeks, and as clinically indicated thereafter. Interrupt AQVESME if clinically significant increases in liver tests are observed or alanine aminotransferase is >5 times the upper limit of normal (ULN). Complete a comprehensive evaluation to rule out other causes of liver injury when drug-induced liver injury is suspected. Discontinue AQVESME if hepatocellular injury due to AQVESME is suspected.

Symptoms and signs of early liver injury may mimic those of thalassemia. Advise patients to report new or worsening symptoms of loss of appetite, nausea, right-upper-quadrant abdominal pain, vomiting, scleral icterus, jaundice, or dark urine while on AQVESME treatment.

During the double-blind period, 2 of 301 patients (0.66%) with thalassemia treated with AQVESME experienced adverse reactions suggestive of hepatocellular injury. Three additional patients experienced adverse reactions suggestive of hepatocellular injury during the open-label extension periods after switching from placebo to AQVESME. Of these 5 patients, 2 had serious liver injury requiring hospitalization, including 1 patient who developed jaundice (peak bilirubin 32 mg/dL). Another patient developed jaundice (peak bilirubin 4 mg/dL) without requiring hospitalization. These reactions were characterized by a time to onset within the first 6 months of treatment with peak elevations of alanine aminotransferase of >5xULN with or without jaundice. All patients discontinued treatment with AQVESME, and these reactions improved upon treatment discontinuation.

#### AQVESME REMS

AQVESME is available only through a restricted program under a REMS called the AQVESME REMS because of the risk of hepatocellular injury.

#### ADVERSE REACTIONS

The most common adverse reactions (≥5%) among patients taking AQVESME were headache and insomnia.

#### DRUG INTERACTIONS

- Strong CYP3A Inhibitors and Inducers: Avoid concomitant use.
- Moderate CYP3A Inhibitors: Avoid concomitant use.
- Moderate CYP3A Inducers: Consider alternatives that are not moderate inducers. If there are no alternatives, see full Prescribing Information for recommended dosage for drug interactions with moderate CYP3A inducers.
- Sensitive CYP3A Substrates, including hormonal contraceptives: Avoid concomitant use with substrates that have narrow therapeutic index.
- CYP2B6, CYP2C, and UGT1A1 Substrates: Monitor patients for efficacy of the substrates with narrow therapeutic index.
- P-gp Substrates: Monitor patients for adverse reactions of the substrates with narrow therapeutic index.

#### HEPATIC IMPAIRMENT

Avoid use of AQVESME in patients with cirrhosis (Child-Pugh Class A, B, or C).

**Please see additional Important Safety Information on previous page and accompanying Full Prescribing Information for AQVESME, including Boxed Warning.**

#### Attendee and Reporting Policy

This non-CME (continuing medical education) educational program is intended for US health care professionals who would reasonably be expected to prescribe, recommend, purchase, or use an Agios product for its labeled indication. Friends, significant others, family members, and other guests of a speaker or invited attendees may not attend this program unless the attendee has an independent bona fide educational need to receive the information. Agios will not pay for, nor provide, alcohol in connection with this program. The value of any meals or items provided to program participants will be reported in accordance with applicable laws and regulations. Health care professionals from certain states or institutions that restrict health care professionals from accepting meals or other transfers of value from pharmaceutical companies must adhere to all restrictions and requirements imposed by the law and their institution. Meals are not permitted for any attendees participating virtually.

**Reference:** AQVESME Prescribing Information. Agios Pharmaceuticals, Inc.; 2025.

## HIGHLIGHTS OF PRESCRIBING INFORMATION

These highlights do not include all the information needed to use AQVESME safely and effectively. See full prescribing information for AQVESME.

AQVESME™ (mitapivat) tablets, for oral use  
Initial U.S. Approval: 2022

### WARNING: HEPATOCELLULAR INJURY

See full prescribing information for complete boxed warning.

AQVESME can cause serious hepatocellular injury. Measure liver laboratory tests (ALT, AST, alkaline phosphatase, and total bilirubin with fractionation) at baseline and every 4 weeks for 24 weeks and then as clinically indicated. Avoid use of AQVESME in patients with cirrhosis. Discontinue AQVESME if hepatocellular injury is suspected. (5.1)

AQVESME is available only through a restricted program called the AQVESME REMS. (5.2)

### INDICATIONS AND USAGE

AQVESME is a pyruvate kinase activator indicated for the treatment of anemia in adults with alpha- or beta-thalassemia. (1.1)

### DOSAGE AND ADMINISTRATION

- The tablet should be swallowed whole. Do not split, crush, chew, or dissolve the tablets. (2.1)
- Recommended dose is 100 mg orally twice daily with or without food. (2.2)

### DOSAGE FORMS AND STRENGTHS

Tablets: 100 mg. (3)

### CONTRAINDICATIONS

None. (4)

### ADVERSE REACTIONS

The most common adverse reactions were headache and insomnia. (6.1)

To report SUSPECTED ADVERSE REACTIONS, contact Agios Pharmaceuticals, Inc. at 1-833-228-8474 or FDA at 1-800-FDA-1088 or [www.fda.gov/medwatch](http://www.fda.gov/medwatch).

### DRUG INTERACTIONS

- Strong CYP3A Inhibitors and Inducers: Avoid concomitant use. (7.1)
- Moderate CYP3A Inhibitors: Avoid concomitant use. (7.1)
- Moderate CYP3A Inducers: Consider alternatives that are not moderate inducers. If there are no alternatives, see Full Prescribing Information for recommended dosage for drug interactions with moderate CYP3A inducers. (2.4, 7.1)
- Sensitive CYP3A substrates including hormonal contraceptives: Avoid concomitant use with substrates that have narrow therapeutic index. (7.2)
- CYP2B6, CYP2C and UGT1A1 Substrates: Monitor patients for efficacy of the substrates with narrow therapeutic index. (7.2)
- P-gp Substrates: Monitor patients for adverse reactions of the substrates with narrow therapeutic index. (7.2)

### USE IN SPECIFIC POPULATIONS

Hepatic Impairment: Avoid use of AQVESME in patients with cirrhosis (Child-Pugh Class A, B or C). (8.6)

See 17 for PATIENT COUNSELING INFORMATION

Revised: 12/2025

## FULL PRESCRIBING INFORMATION: CONTENTS\*

### WARNING: HEPATOCELLULAR INJURY

#### 1 INDICATIONS AND USAGE

#### 2 DOSAGE AND ADMINISTRATION

- Important Dosage and Administration Information
- Recommended Dosage
- Monitoring for Safety
- Recommended Dosage for Drug Interactions

#### 3 DOSAGE FORMS AND STRENGTHS

#### 4 CONTRAINDICATIONS

#### 5 WARNINGS AND PRECAUTIONS

- Hepatocellular Injury
- AQVESME REMS

#### 6 ADVERSE REACTIONS

- Clinical Trials Experience

#### 7 DRUG INTERACTIONS

- Effect of Other Drugs on AQVESME
- Effect of AQVESME on Other Drugs

#### 8 USE IN SPECIFIC POPULATIONS

- Pregnancy
- Lactation
- Pediatric Use
- Geriatric Use
- Hepatic Impairment

#### 11 DESCRIPTION

#### 12 CLINICAL PHARMACOLOGY

- Mechanism of Action
- Pharmacodynamics
- Pharmacokinetics

#### 13 NONCLINICAL TOXICOLOGY

- Carcinogenesis, Mutagenesis, Impairment of Fertility

#### 14 CLINICAL STUDIES

#### 16 HOW SUPPLIED/STORAGE AND HANDLING

#### 17 PATIENT COUNSELING INFORMATION

\*Sections or subsections omitted from the full prescribing information are not listed.

## FULL PRESCRIBING INFORMATION

### WARNING: HEPATOCELLULAR INJURY

**AQVESME can cause serious hepatocellular injury. Measure liver laboratory tests (ALT, AST, alkaline phosphatase, and total bilirubin with fractionation) at baseline and every 4 weeks for 24 weeks and then as clinically indicated. Avoid use of AQVESME in patients with cirrhosis. Discontinue AQVESME if hepatic injury is suspected [see Warnings and Precautions (5.1)].**

**Because of the risk of hepatocellular injury, AQVESME is available only through a restricted program under a Risk Evaluation and Mitigation Strategy (REMS) called the AQVESME REMS [see Warnings and Precautions (5.2)].**

## 1 INDICATIONS AND USAGE

AQVESME is indicated for the treatment of anemia in adults with alpha- or beta-thalassemia.

## 2 DOSAGE AND ADMINISTRATION

### 2.1 Important Dosage and Administration Information

- AQVESME is taken with or without food.
- Swallow tablets whole. Do not split, crush, chew, or dissolve the tablets.
- If a dose of AQVESME is missed by 4 hours or less, administer the dose as soon as possible. If a dose of AQVESME is missed by more than 4 hours, do not administer a replacement dose, and wait until the next scheduled dose. Subsequently, return to the normal dosing schedule.
- Monitor for hepatocellular injury during treatment with AQVESME [see Dosage and Administration (2.3)].

### 2.2 Recommended Dosage

The recommended dosage for adults with alpha- or beta-thalassemia is AQVESME 100 mg orally twice daily.

Treatment with AQVESME is intended to be long-term. Discontinue AQVESME if no benefit in hemolytic anemia has been observed, based on the totality of laboratory results and clinical status of the patient, unless there is another explanation for response failure (e.g., bleeding, surgery, other concomitant illnesses).

#### *Interruption or Discontinuation*

If a patient needs to interrupt or discontinue AQVESME for any reason, a dose taper is not necessary.

### 2.3 Monitoring for Safety

#### *Prior to Initiating Treatment with AQVESME*

- Check liver tests including ALT, AST, alkaline phosphatase, total bilirubin with fractionation, before first AQVESME dose.

### *During Treatment with AQVESME*

- After the first dose, check liver tests including ALT, AST, alkaline phosphatase, total bilirubin with fractionation every 4 weeks for 24 weeks and as clinically indicated thereafter.

### *When Drug-Induced Liver Injury Is Suspected*

- Interrupt AQVESME and complete a comprehensive evaluation to rule out other causes of liver injury.
- If AQVESME-related liver injury caused new or worsening jaundice or ALT  $\geq 10 \times$  baseline, do NOT restart AQVESME.
- If AQVESME-related liver injury is not ruled out, but peak ALT is  $< 10 \times$  baseline without elevation of bilirubin above baseline, and if AQVESME is resumed, reinstate liver test monitoring every 4 weeks for 24 additional weeks.
- If AQVESME-related liver injury is ruled out, AQVESME may be restarted at provider discretion. Resume liver test monitoring schedule that existed prior to stopping AQVESME.

### *AQVESME Interruption Due to Non-Liver Causes*

- If AQVESME was stopped for any reason for  $\leq 8$  weeks other than suspected AQVESME-related liver injury, resume the liver test monitoring schedule that existed prior to stopping AQVESME.
- If AQVESME was stopped for more than 8 weeks, restart liver test monitoring every 4 weeks for 24 additional weeks upon resumption of treatment with AQVESME.
- If treatment is stopped for any duration after 24 weeks of monitoring and treatment, resume monitoring as clinically indicated.

## **2.4 Recommended Dosage for Drug Interactions**

### Moderate CYP3A Inducers

Consider alternative therapies that are not moderate CYP3A inducers during treatment with AQVESME. If there are no alternative therapies, monitor Hb and do not exceed the maximum recommended dose of 100 mg orally twice daily [*see Drug Interactions (7.1) and Clinical Pharmacology (12.3)*].

## **3 DOSAGE FORMS AND STRENGTHS**

- 100 mg tablets: oblong, blue, film-coated tablets with "M100" printed on both sides.

## **4 CONTRAINDICATIONS**

None.

## **5 WARNINGS AND PRECAUTIONS**

### **5.1 Hepatocellular Injury**

AQVESME can cause hepatocellular injury. Avoid use of AQVESME in patients with cirrhosis. In patients with thalassemia treated with AQVESME, liver injury with and without jaundice has been observed within the first 6 months of exposure. Obtain liver tests (including ALT, AST, alkaline phosphatase, total bilirubin with fractionation) prior to the initiation of AQVESME, then every 4 weeks for the first 24 weeks, and as clinically indicated thereafter. Interrupt AQVESME if clinically

significant increases in liver tests are observed or alanine aminotransferase is  $>5$  times the upper limit of normal (ULN). Complete a comprehensive evaluation to rule out other causes of liver injury when drug-induced liver injury (DILI) is suspected. Discontinue AQVESME if hepatocellular injury due to AQVESME is suspected [*see Dosage and Administration (2.3)*].

Symptoms and signs of early liver injury may mimic those of thalassemia. Advise patients to report new or worsening symptoms of loss of appetite, nausea, right upper quadrant abdominal pain, vomiting, scleral icterus, jaundice, or dark urine while on AQVESME treatment.

During the double-blind period, 2 of 301 patients (0.66%) with thalassemia treated with AQVESME experienced adverse reactions suggestive of hepatocellular injury. Three additional patients experienced adverse reactions suggestive of hepatocellular injury during the open-label extension periods after switching from placebo to AQVESME. Of these 5 patients, two had serious liver injury and were hospitalized including 1 patient who developed jaundice (peak bilirubin 32 mg/dL). Another patient developed jaundice (peak bilirubin 4 mg/dL) without being hospitalized. These reactions were characterized by a time to onset within the first 6 months of treatment with peak elevations of alanine aminotransferase of  $>5 \times$ ULN with or without jaundice. All patients discontinued treatment with AQVESME, and these reactions improved upon treatment discontinuation.

AQVESME is available only through a restricted program under a REMS [*see Warnings and Precautions (5.2)*].

## 5.2 AQVESME REMS

AQVESME is available only through a restricted program under a REMS called the AQVESME REMS because of the risk of hepatocellular injury.

Notable requirements of the AQVESME REMS include the following:

- Prescribers must be certified by enrolling in the REMS and completing training.
- Prescribers must counsel patients receiving AQVESME about the risk of hepatocellular injury.
- Prescribers must monitor liver tests (including ALT, AST, alkaline phosphatase, total bilirubin with fractionation, and other tests as clinically indicated) to determine if the patient is appropriate to receive AQVESME treatment.
- Patients must enroll in the REMS and comply with the monitoring requirements.
- Pharmacies must be certified by enrolling in the REMS and must only dispense to patients who are authorized to receive AQVESME.

Further information is available at [www.aqvesmerems.com](http://www.aqvesmerems.com) or 1-800-625-9951.

## 6 ADVERSE REACTIONS

The following clinically significant adverse reaction is described elsewhere in labeling:

- Hepatocellular Injury [*see Warnings and Precautions (5.1)*].

### 6.1 Clinical Trials Experience

Because clinical trials are conducted under widely varying conditions, adverse reaction rates observed in the clinical trials of a drug cannot be directly compared to rates in the clinical trials of another drug and may not reflect the rates observed in practice.

### *Alpha- and Beta-Thalassemia*

A total of 301 patients with thalassemia received AQVESME, administered at 100 mg orally twice daily, for up to 59.9 weeks in the ENERGIZE trial (N=129) and the ENERGIZE-T trial (N=172) [see *Clinical Studies (14)*].

#### *ENERGIZE Trial*

Patients with non-transfusion-dependent thalassemia received AQVESME (N=129) or placebo (N=63).

The most common adverse reactions ( $\geq 5\%$  and at least 5% higher in the AQVESME arm) in patients with non-transfusion-dependent thalassemia were headache and insomnia.

#### *ENERGIZE-T Trial*

Patients with transfusion-dependent thalassemia received AQVESME (N=172) or placebo (N=85).

The most common adverse reactions ( $\geq 5\%$  and at least 5% higher in the AQVESME arm) in patients with transfusion-dependent thalassemia were headache and insomnia.

Serious adverse reactions occurred in 1.3% of patients with thalassemia treated with AQVESME, including supraventricular arrhythmia and supraventricular tachycardia. Permanent discontinuations of AQVESME due to an adverse reaction occurred in 1.3% of patients and included elevated hepatic transaminases and insomnia.

Table 1 summarizes the adverse reactions in the ENERGIZE and the ENERGIZE-T trials, individually and combined.

**Table 1: Adverse Reactions<sup>a</sup> in Patients with Alpha- and Beta-Thalassemia Receiving AQVESME**

Adverse Reactions	ENERGIZE (Non-transfusion-dependent)		ENERGIZE-T (Transfusion-dependent)		Total	
	AQVESME (N=129) n (%)	Placebo (N=63) n (%)	AQVESME (N=172) n (%)	Placebo (N=85) n (%)	AQVESME (N=301) n (%)	Placebo (N=148) n (%)
Headache	29 (22.5)	6 (9.5)	46 (26.7)	10 (11.8)	75 (24.9)	16 (10.8)
Insomnia <sup>b</sup>	35 (27.1)	5 (7.9)	38 (22.1)	8 (9.4)	73 (24.3)	13 (8.8)

<sup>a</sup> Included adverse reactions that occurred in at least 5% of patients in the AQVESME arm and at least 5% higher than the placebo arm.

<sup>b</sup> Term includes initial insomnia, middle insomnia, and terminal insomnia.

### *Variations in Reproductive Hormones*

Increases in serum testosterone (T) concentrations and decreases in serum estradiol (E2) concentrations were observed in men receiving AQVESME (Table 2). These changes in hormones were maintained during treatment with AQVESME. In 3 male patients who discontinued AQVESME and in whom reproductive hormone data were available following discontinuation of AQVESME, the hormone changes were reversible. In female patients, sex hormone analysis was limited due to physiologic variations in hormones during the menstrual cycle and the use of hormonal contraceptives.

**Table 2: Abnormalities in Reproductive Hormones in Men with Thalassemia Receiving AQVESME**

Parameter	ENERGIZE (Non-transfusion-dependent)		ENERGIZE-T (Transfusion-dependent)	
	AQVESME (46 males)	Placebo (25 males)	AQVESME (64 males)	Placebo (31 males)
<b>Reproductive hormone analyses</b>				
<b>Testosterone (T)</b>				
Serum T concentration (mean)				
Baseline	613 ng/dL	505 ng/dL	625 ng/dL	666 ng/dL
Change from baseline	228 ng/dL	-2.8 ng/dL	108 ng/dL	66 ng/dL
Serum T increased <sup>a</sup>				
Baseline	2.2%	4.3%	3.3%	10%
Change from baseline	18.6%	0%	13.5%	6.9%
<b>Estradiol (E2)</b>				
Serum E2 concentration (mean)				
Baseline	29.6 pg/mL	27.3 pg/mL	26.4 pg/mL	28.9 pg/mL
Change from baseline	-8.7 pg/mL	0 pg/mL	-5.0 pg/mL	1.6 pg/mL
Serum E2 decreased <sup>b</sup>				
Baseline	0%	9.5%	10.2%	6.9%
Change from baseline	2.5%	0%	8.5%	3.6%

<sup>a</sup> Percentage of subjects with serum T concentration above the upper limit of normal (greater than 1050 ng/dL) at baseline and percentage of subjects with serum T increases from baseline to above the upper limit of normal where baseline was within normal limits.

<sup>b</sup> Percentage of subjects with serum E2 concentration below the lower limit of normal at baseline and percentage of subjects with serum E2 decreases from baseline to below the lower limit of normal where baseline was within normal limits.

Note: Results from the ENERGIZE-T study do not include data from patients who received concomitant testosterone replacement therapies.

## 7 DRUG INTERACTIONS

### 7.1 Effect of Other Drugs on AQVESME

<b>Strong CYP3A Inhibitors</b>	
Clinical Impact	<ul style="list-style-type: none"> <li>Co-administration of AQVESME with strong CYP3A inhibitors increased mitapivat plasma concentrations [see <i>Clinical Pharmacology (12.3)</i>].</li> <li>Increased mitapivat plasma concentrations may increase the risks of adverse reactions of AQVESME.</li> </ul>
Prevention or Management	<ul style="list-style-type: none"> <li>Avoid co-administration of strong CYP3A inhibitors with AQVESME [see <i>Dosage and Administration (2.4)</i>].</li> </ul>
<b>Moderate CYP3A Inhibitors</b>	
Clinical Impact	<ul style="list-style-type: none"> <li>Co-administration of AQVESME with moderate CYP3A inhibitors will increase mitapivat plasma concentrations [see <i>Clinical Pharmacology (12.3)</i>].</li> </ul>

Prevention or Management	<ul style="list-style-type: none"> <li>• Avoid co-administration of moderate CYP3A inhibitors with AQVESME [see <i>Dosage and Administration (2.4)</i>].</li> </ul>
<b>Strong CYP3A Inducers</b>	
Clinical Impact	<ul style="list-style-type: none"> <li>• Co-administration of AQVESME with strong CYP3A inducers decreased mitapivat plasma concentrations [see <i>Clinical Pharmacology (12.3)</i>].</li> <li>• Decreased mitapivat plasma concentrations will reduce the efficacy of AQVESME.</li> </ul>
Prevention or Management	<ul style="list-style-type: none"> <li>• Avoid co-administration of strong CYP3A inducers with AQVESME [see <i>Dosage and Administration (2.4)</i>].</li> </ul>
<b>Moderate CYP3A Inducers</b>	
Clinical Impact	<ul style="list-style-type: none"> <li>• Co-administration of AQVESME with moderate CYP3A inducers will decrease mitapivat plasma concentrations [see <i>Clinical Pharmacology (12.3)</i>].</li> </ul>
Prevention or Management	<ul style="list-style-type: none"> <li>• Consider alternative therapies that are not moderate CYP3A inducers during treatment with AQVESME. If there are no alternative therapies, monitor Hb and do not exceed the maximum recommended dose of 100 mg twice daily [see <i>Dosage and Administration (2.4)</i>].</li> </ul>

## 7.2 Effect of AQVESME on Other Drugs

<b>CYP3A Substrates</b>	
Clinical Impact	<ul style="list-style-type: none"> <li>• AQVESME induces CYP3A. Co-administration of AQVESME will decrease systemic concentrations of drugs that are sensitive CYP3A substrates, including hormonal contraceptives (e.g., ethinyl estradiol) [see <i>Clinical Pharmacology (12.3)</i>].</li> </ul>
Prevention or Management	<ul style="list-style-type: none"> <li>• Avoid co-administration of AQVESME with sensitive CYP3A substrates that have narrow therapeutic index when co-administered with AQVESME.</li> <li>• Avoid concomitant use with hormonal contraceptives except for intrauterine systems containing levonorgestrel. If contraception is desired or needed, use an alternative contraceptive that is not affected by enzyme inducers. If concomitant use is unavoidable, use additional nonhormonal contraception during concomitant use and for 28 days after discontinuation of AQVESME.</li> </ul>
<b>CYP2B6 and CYP2C Substrates</b>	
Clinical Impact	<ul style="list-style-type: none"> <li>• AQVESME induces CYP2B6, CYP2C8, CYP2C9, and CYP2C19 enzymes <i>in vitro</i>, and may decrease systemic concentrations of drugs that are sensitive substrates of these enzymes [see <i>Clinical Pharmacology (12.3)</i>].</li> </ul>
Prevention or Management	<ul style="list-style-type: none"> <li>• Monitor patients for loss of therapeutic effect of sensitive substrates of these enzymes with narrow therapeutic index when co-administered with AQVESME.</li> </ul>

<b>UGT1A1 Substrates</b>	
Clinical Impact	<ul style="list-style-type: none"> <li>• AQVESME induces UGT1A1 <i>in vitro</i> and may decrease systemic concentrations of drugs that are UGT1A1 substrates [see <i>Clinical Pharmacology (12.3)</i>].</li> </ul>
Prevention or Management	<ul style="list-style-type: none"> <li>• Monitor patients for loss of therapeutic effect of UGT1A1 substrates with narrow therapeutic index when co-administered with AQVESME.</li> </ul>
<b>P-gp Substrates</b>	
Clinical Impact	<ul style="list-style-type: none"> <li>• AQVESME inhibits the P-gp transporter <i>in vitro</i> and may increase systemic concentrations of drugs that are P-gp substrates [see <i>Clinical Pharmacology (12.3)</i>].</li> </ul>
Prevention or Management	<ul style="list-style-type: none"> <li>• Monitor patients for adverse reactions of P-gp substrates with narrow therapeutic index when co-administered with AQVESME.</li> </ul>

## 8 USE IN SPECIFIC POPULATIONS

### 8.1 Pregnancy

#### Risk Summary

Available data from clinical trials of AQVESME are insufficient to evaluate for a drug-associated risk of major birth defects, miscarriage or other adverse maternal or fetal outcomes.

In animal reproduction studies, mitapivat orally administered twice daily to pregnant rats and rabbits during organogenesis was not teratogenic at exposures up to 9.9- and 2.4-fold the human exposure associated with the MRHD, respectively. Mitapivat administered orally to pregnant rats twice daily during organogenesis through lactation did not result in adverse developmental effects at doses up to 9.9 times the MRHD (*see Data*).

The estimated background risk of major birth defects for the indicated population is unknown. All pregnancies have a background risk of birth defect, loss, or other adverse outcomes. In the U.S. general population, the estimated background risk of major birth defects and miscarriage in clinically recognized pregnancies is 2% to 4% and 15% to 20%, respectively.

#### Clinical Considerations

##### Disease-Associated Maternal Risk

Transfusion requirements in thalassemia patients are increased during pregnancy. Pregnant women with transfusion-dependent thalassemia are considered high risk, with their major complications being cardiac in origin, including cardiac dysrhythmia, right ventricular dysfunction, and cardiac failure, reported in 1.1% to 15.6%. Pregnant women with non-transfusion-dependent thalassemia need to be monitored and treated for risk of thrombosis, especially those who are splenectomized or infrequently transfused. Patients with non-transfusion-dependent thalassemia may develop a need for regular transfusions during pregnancy, and in such patients the risk of alloimmunization should be carefully evaluated. All pregnant women with thalassemia should be closely monitored for iron overload.

## Data

### Animal Data

In an embryo-fetal development study in rats, mitapivat was administered at doses of 5, 10, 25, and 100 mg/kg twice daily by oral gavage during the period of organogenesis (gestation days 6 to 17). There was a statistically significant 14% decrease in maternal net body weight gain at 100 mg/kg twice daily with associated decrease in food consumption. Enlarged or fused placenta and/or a distended amniotic sac, an increase in post-implantation loss (early and late resorptions), a decrease in the mean number of viable fetuses, lower mean fetal weights, and fetal external, visceral, and skeletal malformations were observed at 100 mg/kg twice daily, (48 times the MRHD, based on area under the plasma drug concentration-time curve [AUC]). No maternal or embryo-fetal toxicity was observed up to 25 mg/kg twice daily (9.9 times the MRHD, based on AUC).

In an embryo-fetal development study in rabbits, mitapivat was administered at doses of 12.5, 30, and 62.5 mg/kg twice daily by oral gavage during the period of organogenesis (gestation days 7 to 20). Lower fetal weight was observed at 62.5 mg/kg twice daily (2.4 times MRHD, based on AUC) and correlated with reduced maternal body weight gain. No effects on fetal morphology were observed.

In a pre- and post-natal development study in rats, mitapivat was administered at doses of 5, 10, 25, and 100 mg/kg twice daily by oral gavage during the period of organogenesis and continuing to weaning (gestation day 7 to lactation day 20). Dystocia was observed at  $\geq 25$  mg/kg twice daily ( $\geq 9.9$  times MRHD, based on AUC). At 100 mg/kg twice daily (48 times MRHD, based on AUC) decreased maternal body weight gain, prolonged parturition, and dystocia occurred and resulted in maternal mortality, complete litter loss, decreased pup viability and decreased pup body weight. No adverse effects on pup growth and development, and reproductive performance were observed up to 50 mg/kg (9.9 times the MRHD, based on AUC).

## **8.2 Lactation**

### Risk Summary

There are no data on the presence of AQVESME or its metabolites in human or animal milk, the effects on the breastfed child, or the effects on milk production. The developmental and health benefits of breastfeeding should be considered along with the mother's clinical need for AQVESME and any potential adverse effects on the breastfed child from AQVESME or from the underlying maternal condition.

## **8.4 Pediatric Use**

Safety and effectiveness in pediatric patients have not been established.

## **8.5 Geriatric Use**

Clinical studies of AQVESME did not include sufficient numbers of subjects aged 65 years and over to determine whether they respond differently from younger subjects.

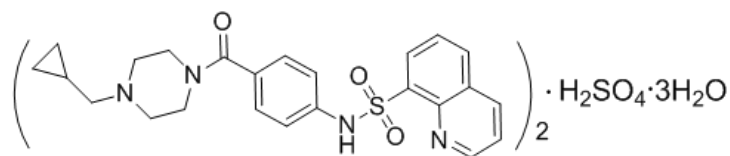
## **8.6 Hepatic Impairment**

Avoid use in patients with cirrhosis (Child-Pugh Class A, B, or C) due to an increased risk of severe outcomes if hepatocellular injury occurs [see *Warnings and Precautions* (5.1)]. In patients with cirrhosis Child-Pugh Class B and C, there is a potential increase in AQVESME exposure [see *Clinical Pharmacology* (12.3)].

## **11 DESCRIPTION**

The active ingredient of AQVESME is mitapivat, a pyruvate kinase activator, present as mitapivat sulfate. The chemical name of mitapivat sulfate is 8-quinolinesulfonamide, N-[4-[4-

(cyclopropylmethyl)-1-piperazinyl]carbonyl]phenyl]-, sulfate, hydrate (2:1:3). The chemical structure of mitapivat sulfate is:



The molecular formula is  $(C_{24}H_{26}N_4SO_3)_2 \cdot H_2SO_4 \cdot 3H_2O$ , and the molecular weight is 1053.23 for mitapivat sulfate. Mitapivat sulfate is a white to off-white solid and is slightly soluble in water.

AQVESME is available as 100 mg tablets for oral administration. Each tablet contains 100 mg mitapivat free base, provided as 117.0 mg of the sulfate hydrate salt, and the following inactive ingredients: croscarmellose sodium, mannitol, microcrystalline cellulose, and sodium stearyl fumarate.

The 100 mg tablet film coating contains the inactive ingredients FD&C Blue No. 2, hypromellose, lactose monohydrate, titanium dioxide, triacetin, and macrogol/PEG. The tablets are imprinted with blue ink containing the inactive ingredients ammonium hydroxide, FD&C Blue No. 1, isopropyl alcohol, n-butyl alcohol, propylene glycol, shellac glaze, and titanium dioxide.

## 12 CLINICAL PHARMACOLOGY

### 12.1 Mechanism of Action

Mitapivat is a pyruvate kinase activator that acts by allosterically binding to the pyruvate kinase tetramer and increasing pyruvate kinase (PK) activity. Imbalances in globin chain production during erythropoiesis result in increased oxidative stress, which leads to ineffective erythropoiesis and hemolysis. In nonclinical models of beta-thalassemia, mitapivat improved energy homeostasis, RBC longevity, ineffective erythropoiesis, and hemolysis by increasing PK activity.

### 12.2 Pharmacodynamics

Mitapivat decreases 2,3 diphosphoglycerate (2,3-DPG) and increases ATP in healthy volunteers and in patients with thalassemia.

#### Cardiac Electrophysiology

At a dose 3 times the recommended dose, mitapivat did not prolong the QT interval to any clinically relevant extent.

### 12.3 Pharmacokinetics

The population pharmacokinetic model simulated  $C_{max}$ ,  $C_{trough}$ ,  $AUC_{0-12}$  and accumulation ratio of mitapivat at the recommended dosage is listed in Table 3.

**Table 3: Steady State Mitapivat Exposure at the Recommended Dosage<sup>a</sup>**

Mitapivat Dosage	$C_{max}$ (ng/mL)	$C_{trough}$ (ng/mL)	$AUC_{0-12}$ (ng*h/mL)	Accumulation Ratio
100 mg twice daily <sup>b</sup>	1641.7 (12.9%)	71 (18.5%)	4835.6 (5.8%)	0.83

<sup>a</sup> Pharmacokinetic parameters are presented as geometric mean (CV%). The interval of the last 12 hours was selected for steady state PK parameters calculation. Residual error was not included during simulation.

<sup>b</sup> The simulations were performed at steady state.

#### Absorption

Median  $t_{max}$  values at steady state were 0.5 to 1.0 hour post-dose at 100 mg twice daily.

The absolute bioavailability after a single dose was approximately 73%.

### Effect of Food

Following administration of a single dose of AQVESME in healthy subjects, a high-fat meal (approximately 900 to 1,000 total calories, with 500 to 600 calories from fat, 250 calories from carbohydrate, and 150 calories from protein) did not change the exposure ( $AUC_{inf}$ ) of mitapivat, but reduced the rate of mitapivat absorption, with a 42% reduction in  $C_{max}$  and a delay in  $t_{max}$  of 2.3 hours when compared to dosing under fasted conditions.

### Distribution

Mitapivat is highly protein bound (97.7%) in plasma with low RBC distribution (RBC-to-plasma ratio of 0.37). The mean volume of distribution at steady state ( $V_{ss}$ ) was 42.5 L.

### Elimination

Population pharmacokinetics derived median CL/F at steady state was 17.7 L/h at 100 mg twice daily.

### Metabolism

*In vitro* studies showed that mitapivat is primarily metabolized by CYP3A4. Following a single oral dose of 120 mg of radiolabeled mitapivat to healthy subjects, unchanged mitapivat was the major circulating component.

### Excretion

After a single oral administration of radiolabeled mitapivat to healthy subjects, the total recovery of administered radioactive dose was 89.2%, with 49.6% in the urine (2.6% unchanged) and 39.6% in the feces (<1% unchanged).

### Specific Populations

No clinically meaningful effects on the pharmacokinetics of mitapivat were observed based on age, sex, race, or body weight.

### Pediatric Population

The pharmacokinetics of mitapivat in children and adolescents (<18 years old) have not been studied.

### Hepatic Impairment

Mitapivat undergoes extensive hepatic metabolism. The pharmacokinetics of mitapivat were studied in adult subjects with moderate hepatic impairment (Child-Pugh Class B). After a single oral administration of 50 mg mitapivat, subjects with moderate hepatic impairment demonstrated 36% greater exposure ( $AUC_{\infty}$ ) to mitapivat, compared to subjects with normal hepatic function. Geometric mean  $C_{max}$  values were similar between the groups. There were no major changes to plasma protein binding or elimination half-life in subjects with moderate hepatic impairment relative to healthy controls. The pharmacokinetics of mitapivat in subjects with severe hepatic impairment (Child-Pugh Class C) have not been studied.

### Renal Impairment

The effects of renal impairment on mitapivat pharmacokinetics were assessed with population pharmacokinetic analyses. Steady state AUC of mitapivat in patients with eGFR 60 to <90 mL/min/1.73 m<sup>2</sup> was not significantly different compared to patients with eGFR  $\geq$ 90 mL/min/1.73 m<sup>2</sup>. There are limited data available in patients with eGFR 30 to <60 mL/min/1.73m<sup>2</sup> and no data available in patients with eGFR <30 mL/min/1.73 m<sup>2</sup>.

## Drug Interaction Studies

### Clinical Studies and Model-Based Approaches

#### *Effect of Strong CYP3A Inhibitors on AQVESME*

Itraconazole (a strong CYP3A inhibitor) increased mitapivat  $AUC_{inf}$  and  $C_{max}$  by 4.9-fold and 1.7-fold, respectively, following a single AQVESME dose of 20 mg. Itraconazole increased mitapivat  $AUC_{0-12}$  and  $C_{max}$  by 1.9-fold and 1.6-fold, respectively, following AQVESME 100 mg twice daily.

Ketoconazole (a strong CYP3A inhibitor) increased mitapivat  $AUC_{0-12}$  and  $C_{max}$  by approximately 3.9-fold and 2.4-fold, respectively, following AQVESME 100 mg twice daily.

#### *Effect of Moderate CYP3A Inhibitors on AQVESME*

Fluconazole (a moderate CYP3A inhibitor) increased mitapivat  $AUC_{0-12}$  and  $C_{max}$  by 2.7-fold and 1.7-fold, respectively, following AQVESME 100 mg twice daily.

#### *Effect of Strong CYP3A Inducers on AQVESME*

Rifampin (a strong CYP3A inducer) decreased mitapivat  $AUC_{inf}$  and  $C_{max}$  by 91% and 77%, respectively, following a single AQVESME dose of 50 mg. Rifampin decreased mitapivat  $AUC_{0-12}$  and  $C_{max}$  by 93% and 82%, respectively, following AQVESME 100 mg twice daily.

#### *Effect of Moderate CYP3A Inducers on AQVESME*

Efavirenz (a moderate CYP3A4 inducer) decreased mitapivat  $AUC_{0-12}$  and  $C_{max}$  by 52% and 21%, respectively, following AQVESME 100 mg twice daily.

#### *Effect of AQVESME on CYP3A substrates*

Midazolam (a CYP3A substrate)  $AUC_{inf}$  and  $C_{max}$  decreased by 65% and 59%, respectively, with AQVESME 100 mg twice daily.

#### *Effect of AQVESME on P-gp Substrates*

Co-administration of AQVESME with drugs that are substrates of P-gp may result in a clinically relevant increase in plasma concentrations of these substrates.

## In vitro Studies

### *CYP450 and UGT Enzymes*

Mitapivat induces CYP2B6, CYP2C8, CYP2C9, CYP2C19, and UGT1A1.

### *Drug Transporter Systems*

Mitapivat is a substrate and an inhibitor of P-gp.

## **13 NONCLINICAL TOXICOLOGY**

### **13.1 Carcinogenesis, Mutagenesis, Impairment of Fertility**

#### Carcinogenesis

Mitapivat was not carcinogenic in transgenic rasH2 mice up to the highest doses tested at 500 mg/kg/day in males and at 250 mg/kg/day in females when given orally for 26 weeks.

Mitapivat was not carcinogenic in rats when given orally up to 300 mg/kg/day in males and 200 mg/kg/day in females, at systemic exposures 35 times and >86 times the MRHD, respectively, based on AUC.

## Mutagenesis

Mitapivat was not mutagenic in an *in vitro* bacterial reverse mutation (Ames) assay. Mitapivat was not clastogenic in an *in vitro* human lymphocyte micronucleus assay or in an *in vivo* rat bone marrow micronucleus assay.

## Fertility

In a fertility and early embryonic development study, oral administration of mitapivat twice daily in male rats prior to and during mating at doses up to 300 mg/kg/day, which represents 34 times the MRHD of 100 mg twice daily, based on AUC, did not result in adverse effects on fertility or reproductive function. In female rats, twice daily oral administration of mitapivat prior to mating and continuing through organogenesis, at doses up to 200 mg/kg/day, which represents 37 times the MRHD of 100 mg twice daily, based on AUC, did not result in adverse effects on fertility or reproductive function.

## 14 CLINICAL STUDIES

### **Patients with Transfusion-Dependent and Non-Transfusion-Dependent alpha- or beta-Thalassemia**

#### Transfusion-Dependent alpha- or beta-Thalassemia

The efficacy of AQVESME was evaluated in ENERGIZE-T, a multinational, randomized, double-blind, placebo-controlled clinical study (NCT04770779) of 258 adult patients with transfusion-dependent alpha- or beta-thalassemia, defined as having had 6 to 20 RBC units transfused and no longer than a 6-week transfusion-free period during the 24 weeks prior to randomization. Patients were included if they had a documented diagnosis of thalassemia (beta-thalassemia with or without alpha-globin gene mutations, HbE/beta-thalassemia, or alpha-thalassemia/HbH disease). Randomization was stratified by geographical region (North America and Europe vs Asia-Pacific vs Rest of World) and thalassemia genotype ( $\beta^0/\beta^0$  vs non- $\beta^0/\beta^0$ ).

Among the 258 patients with transfusion-dependent alpha- or beta-thalassemia, 171 patients were randomized to receive 100 mg of AQVESME twice daily during the 48-week double-blind period.

The median duration of treatment with AQVESME was 48.1 weeks (range: 0.3 to 59.9 weeks). Overall, 104 (60.5%) patients were exposed to AQVESME for >48 weeks. Among the 258 randomized patients, the median age was 33.5 years (range: 18 to 67) and 47.3% were male; 62.0% were from North America and Europe, 18.2% were from Asia-Pacific, and 19.8% were from the rest of the world; race was reported in 95.7% of patients: 60.1% White, 30.2% Asian, 0.8% Black or African American, 0.8% Multiracial, and 3.9% unknown.

The baseline disease characteristics are shown in Table 4.

**Table 4: Baseline Disease Characteristics in Patients with Transfusion-Dependent Thalassemia (ENERGIZE-T)**

<b>Baseline Disease Characteristics</b>	<b>AQVESME N=171</b>	<b>Placebo N=87</b>	<b>Total N=258</b>
<b>Hemoglobin (g/dL), n<sup>a</sup></b>			
Median	9.0	8.9	8.9
(min, max)	(5.1, 11.8)	(5.1, 10.9)	(5.1, 11.8)
<b>Thalassemia Genotype, n (%)</b>			
beta <sup>0</sup> /beta <sup>0</sup>	75 (44)	39 (45)	114 (44)
non-beta <sup>0</sup> /beta <sup>0</sup>	96 (56)	48 (55)	144 (56)

<b>Baseline Disease Characteristics</b>	<b>AQVESME N=171</b>	<b>Placebo N=87</b>	<b>Total N=258</b>
<b>Transfusion Burden (RBC units), n (%)<sup>b</sup></b>			
≤12	54 (32)	21 (24)	75 (29)
>12	117 (68)	66 (76)	183 (71)
<b>Hepatic Iron Concentration (mg/g), n</b>	133	74	207
Median	4.58	4.43	4.55
(min, max)	(0.37, 28.21)	(0.37, 20.47)	(0.37, 28.21)
<b>Prior History of Splenectomy, n (%)</b>	92 (54)	49 (56)	141 (55)
<b>Prior History of Cholecystectomy, n (%)</b>	42 (25)	24 (28)	66 (26)
<b>Prior History of Iron Chelation, n (%)</b>	165 (96)	87 (100)	252 (98)
<b>Prior History of Hydroxyurea, n (%)</b>	7 (4.1)	3 (3.4)	10 (3.9)

Hb: hemoglobin, RBC: red blood cells

<sup>a</sup> Pretransfusion Hb threshold is the mean of all pretransfusion Hb concentrations for the RBC transfusions administered during the 24-week period before randomization.

<sup>b</sup> Total number of RBC units transfused in the 24-week period before randomization.

Efficacy was based upon transfusion reduction response, defined as ≥50% reduction in the number of red blood cell units transfused with a reduction of at least 2 units of RBCs transfused in any consecutive 12-week period through Week 48 compared with baseline. The efficacy results are shown in Table 5.

**Table 5: Efficacy Results in Patients with Transfusion-Dependent Thalassemia (ENERGIZE-T)**

	<b>AQVESME N= 171</b>	<b>Placebo N=87</b>	<b>Difference</b>	
<b>Endpoints</b>	<b>n (%)</b>	<b>n (%)</b>	<b>Adjusted Rate Difference<sup>a</sup> (%) (95% CI)</b>	<b>p-value<sup>b</sup></b>
≥50% reduction from baseline in RBC units transfused in any consecutive 12 weeks, with a reduction of at least 2 units	52 (30.4)	11 (12.6)	17.6 (8.0, 27.2)	0.0003
<b>Endpoints</b>	<b>n (%)</b>	<b>n (%)</b>	<b>Adjusted Rate Difference<sup>b</sup> (%) (95% CI)</b>	<b>p-value<sup>a</sup></b>
≥50% reduction from baseline in RBC units transfused in any consecutive 24 weeks	23 (13.5)	2 (2.3)	11.1 (5.1, 17.0)	0.0003
≥33% reduction from baseline in RBC units from Week 13 through Week 48	25 (14.6)	1 (1.1)	13.4 (7.7, 19.1)	<0.0001
≥50% reduction from baseline in RBC units from Week 13 through Week 48	13 (7.6)	1 (1.1)	6.4 (1.9, 10.9)	0.0056

CI: confidence interval, RBC: red blood cell

<sup>a</sup> All p-values are 2-sided and all results are statistically significant.

<sup>b</sup> The difference is adjusted for randomization stratification factors, which included geographical region (North America and Europe vs Asia-Pacific vs Rest of World) and thalassemia genotype ( $\beta^0/\beta^0$  vs non- $\beta^0/\beta^0$ ). The two-sided p-value is based on the Mantel-Haenszel stratum weighted method adjusting for the randomization stratification factors.

### Non-Transfusion-Dependent alpha- or beta-Thalassemia

The efficacy of AQVESME was evaluated in ENERGIZE, a multinational, randomized, double-blind, placebo-controlled clinical study (NCT04770753) of 194 adults with non-transfusion-dependent alpha- or beta-thalassemia, defined as having had no more than 5 RBC units transfused during the 24-week period prior to randomization and no RBC transfusions within 8 weeks prior to informed consent and during the screening period. Patients were included if they had a documented diagnosis of thalassemia (beta-thalassemia with or without alpha-globin gene mutations, HbE/beta-thalassemia, or alpha-thalassemia/HbH disease) and a baseline Hb concentration  $\leq 10$  g/dL. Randomization was stratified by baseline Hb concentrations ( $\leq 9$  g/dL vs 9.1-10 g/dL) and thalassemia genotype (alpha-thalassemia/HbH disease vs beta-thalassemia).

Among the 194 patients with non-transfusion-dependent alpha- or beta-thalassemia, 130 patients were randomized to receive 100 mg of AQVESME twice daily during the 24-week double-blind period.

The median duration of treatment with AQVESME was 24.1 weeks (range: 1.1 to 28.1 weeks). Overall, 97 (75%) patients were exposed to AQVESME for  $>24$  weeks. Among the 194 randomized patients, the median age was 41 years (range: 18 to 69) and 36.6% were male; race was reported in 99% of patients: 56.2% White, 39.2% Asian, 1.0% Black or African American, 0.5% Multiracial, and 2.1% unknown.

The baseline disease characteristics are shown in Table 6.

**Table 6: Baseline Disease Characteristics in Patients with Non-Transfusion-Dependent Thalassemia (ENERGIZE)**

<b>Baseline Disease Characteristics<sup>a</sup></b>	<b>AQVESME N=130</b>	<b>Placebo N=64</b>	<b>Total N=194</b>
<b>Hemoglobin (g/dL), n</b>	130	64	194
Median	8.4	8.4	8.4
(min, max)	(5.3, 10.4)	(5.9, 10.7)	(5.3, 10.7)
<b>Thalassemia Genotype, n (%)</b>			
alpha-thalassemia/HbH disease	42 (32)	20 (31)	62 (32)
beta-thalassemia	88 (68)	44 (69)	132 (68)
<b>Transfusion Burden (RBC units)<sup>b</sup>, n (%)</b>			
0	114 (87.7)	54 (84.4)	168 (86.6)
1-2	10 (7.7)	7 (10.9)	17 (8.8)
3-5	6 (4.6)	3 (4.7)	9 (4.6)
<b>Reticulocyte (Fraction of 1), n</b>	122	58	180
Median	0.05	0.04	0.05
(min, max)	(0.00, 0.30)	(0.00, 0.22)	(0.00, 0.30)
<b>Indirect Bilirubin (mg/dL), n</b>	130	62	192
Median	1.37	1.32	1.34
(min, max)	(0.13, 9.11)	(0.15, 4.77)	(0.13, 19.11)
<b>LDH (U/L), n</b>	130	64	194
Median	264	267	265
(min, max)	(108, 1208)	(110, 1009)	(108, 1208)

<b>Baseline Disease Characteristics<sup>a</sup></b>	<b>AQVESME N=130</b>	<b>Placebo N=64</b>	<b>Total N=194</b>
<b>Hepatic Iron Concentration (mg/g), n</b>	98	52	150
Median	3.93	2.76	3.64
(min, max)	(0.75, 27.19)	(0.75, 18.53)	(0.75, 27.19)
<b>Prior History of Splenectomy, n (%)</b>	47 (36)	25 (39)	72 (37)
<b>Prior History of Cholecystectomy, n (%)</b>	45 (35)	16 (25)	61 (31)
<b>Prior History of Iron Chelation, n (%)</b>	46 (35)	22 (34)	68 (35)
<b>Prior History of Hydroxyurea, n (%)</b>	11 (8.5)	6 (9.4)	17 (8.8)

Hb: hemoglobin, LDH: lactate dehydrogenase, RBC: red blood cell

<sup>a</sup> n is the number of patients with non-missing data.

<sup>b</sup> Total number of RBC units transfused in the 24-week period before randomization.

Efficacy was based upon Hb response, defined as a  $\geq 1$  g/dL increase in average Hb concentration from Week 12 through Week 24 compared with baseline and a mean change from baseline in fatigue-related symptoms and impacts assessed by a patient-reported outcome instrument, the Functional Assessment of Chronic Illness Therapy – Fatigue Scale (FACIT-Fatigue). See Table 7 for efficacy results.

**Table 7: Efficacy Results in Patients with Non-Transfusion-Dependent Thalassemia (ENERGIZE)**

	<b>AQVESME N= 130</b>	<b>Placebo N=64</b>	<b>Difference</b>	
<i>Endpoint</i>	<i>n (%)</i>	<i>n (%)</i>	<i>Adjusted Rate Difference (%) (95% CI)</i>	<i>p-value<sup>a</sup></i>
Hb Response <sup>b</sup>	55 (42.3)	1 (1.6)	40.9 (32.0, 49.8)	<0.0001
<i>Endpoint</i>	<i>LS mean (95% CI)</i>	<i>LS mean (95% CI)</i>	<i>LS mean difference (95% CI)</i>	<i>p-value<sup>a</sup></i>
Hemoglobin (g/dL) <sup>c</sup>	0.86 (0.73, 0.99)	-0.11 (-0.28, 0.07)	0.96 (0.78, 1.15)	<0.0001
FACIT-Fatigue <sup>d</sup>	4.85 (3.41, 6.30)	1.46 (-0.43, 3.34)	3.40 (1.21, 5.59)	0.0026

CI: confidence interval, Hb: hemoglobin, LS: least squares

<sup>a</sup> All p-values are 2-sided and all results are statistically significant.

<sup>b</sup> For Hb response, the difference is adjusted for randomization stratification factors, which included Hb concentrations ( $\leq 9.0$  g/dL vs 9.1-10.0 g/dL) and thalassemia genotype (alpha-thalassemia/HbH disease vs beta-thalassemia). The two-sided p-value is based on the Mantel-Haenszel stratum weighted method adjusting for the randomization stratification factors.

<sup>c</sup> Change from baseline in average Hb concentration from Week 12 through Week 24.

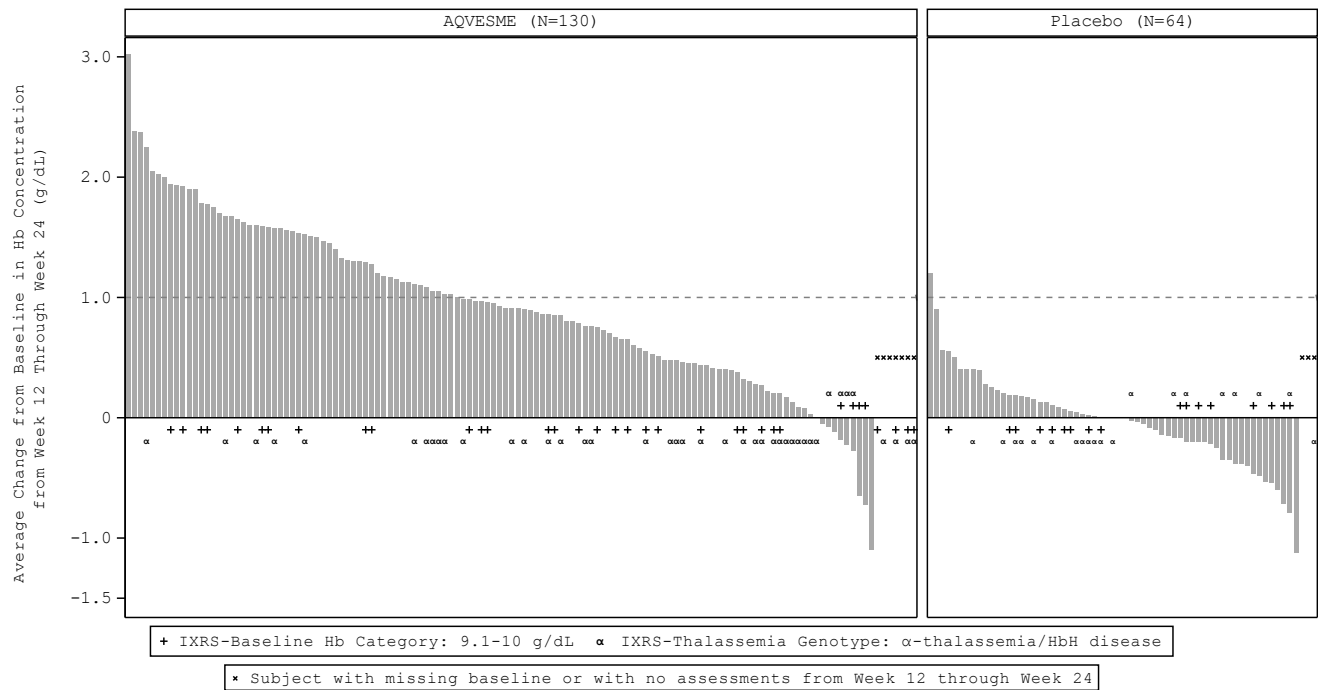
<sup>d</sup> Change from baseline in average FACIT-Fatigue score from Week 12 through Week 24. FACIT-Fatigue total scores range from 0 to 52 with higher scores indicating less fatigue. At baseline, patients reported a mean FACIT-Fatigue score of approximately 36 in both the AQVESME and placebo arms.

Note: For the endpoints of change from baseline in average Hb concentration from Week 12 through Week 24 and change from baseline in average FACIT-Fatigue score from Week 12 through Week 24, the 95% CIs and the two-sided p-values are based on an analysis of covariance (ANCOVA) model, which included change from baseline as the dependent variable, treatment group as the independent variable, and baseline and the randomization stratification factors as covariates. The results are based on observed cases.

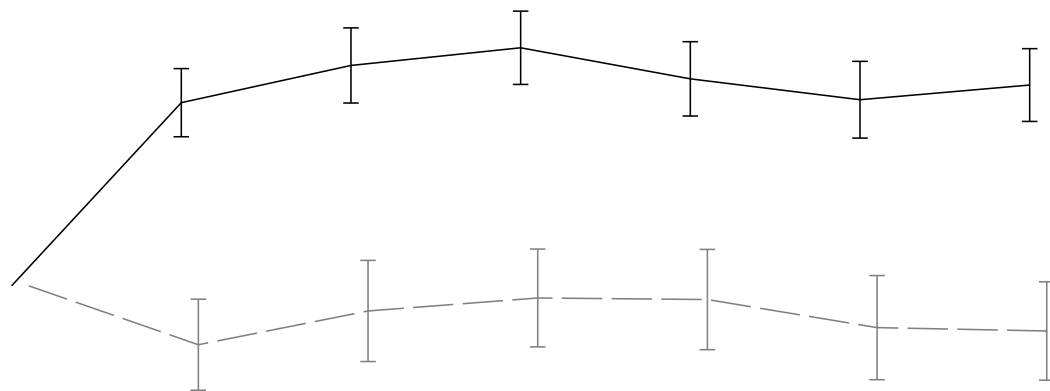
Eighty-seven percent of patients in the AQVESME arm experienced an increase from baseline in average Hb from Weeks 12 through 24 (see Figure 1). Figure 2 depicts change from baseline in

hemoglobin over time.

**Figure 1: Average Change from Baseline in Hemoglobin from Week 12 through Week 24 by Patient – All Randomized Patients (ENERGIZE)**



**Figure 2: Change from Baseline in Hemoglobin Over Time – All Randomized Patients (ENERGIZE)**



Of the 55 patients with Hb response in the AQVESME arm, the average increase in Hb was 1.6 g/dL and the median duration of response was 19.6 weeks (range: 4.0 to 23.4+ weeks) during the 24-week double-blind period.

Patients in the AQVESME arm experienced an improvement compared to placebo in the change from baseline to Week 24 for 2 markers of hemolysis (indirect bilirubin [ $-0.62$  mg/dL (95% CI:  $-0.80$ ,

−0.44)] and lactate dehydrogenase [−24.28 U/L (95% CI: −45.40, −3.15)]).

## 16 HOW SUPPLIED/STORAGE AND HANDLING

### How Supplied

<b>AQVESME 28-Day Packs</b>				
<b>Tablet Strength</b>	<b>Package Configuration</b>	<b>Tablet Description</b>	<b>Tablet Imprint</b>	<b>NDC</b>
100 mg	Carton containing 4 blister wallets. Each blister wallet contains 14 tablets.	Oblong, blue, film-coated tablets	"M100" printed on both sides	Carton: 71334-235-00 Blister wallet: 71334-235-14

### Storage

Store in a refrigerator 2°C to 8°C (36°F to 46°F).

AQVESME may be stored at room temperature, 20°C to 25°C (68°F to 77°F) for up to 3 months. The discard date is 3 months after removal of the tablets from the refrigerator. Write the discard date in the space provided on the blister wallet and/or the carton. Discard the tablets if not used within 3 months or if the expiration date has passed, whichever occurs first. Dispense and store the blister wallets in the original carton until use.

## 17 PATIENT COUNSELING INFORMATION

Advise the patient to read the FDA-approved patient labeling (Medication Guide).

### Hepatocellular Injury

Inform patients of the risk of hepatocellular injury with AQVESME. In patients with thalassemia treated with AQVESME, liver injury has been observed within the first 6 months of treatment. Tell patients to immediately report any new or worsening symptoms suggestive of liver injury including loss of appetite, nausea, right upper quadrant abdominal pain, vomiting, scleral icterus, jaundice, or dark urine on AQVESME treatment to their healthcare provider for further evaluation [see *Warnings and Precautions (5.1)*].

### AQVESME REMS

AQVESME is only available through a restricted program called the AQVESME REMS [see *Warnings and Precautions (5.2)*].

Inform the patient of the following notable requirements:

- Patients must enroll in the REMS and comply with the REMS requirements.

AQVESME is available only from certified pharmacies participating in the REMS. Therefore, provide patients with the telephone number and website for information on how to obtain AQVESME.

### Drug Interactions

Advise patients to inform their healthcare providers of all concomitant medications, including over-the-counter medications, vitamins, and herbal products [see *Drug Interactions (7)*].

### Dosing and Storage Instructions

- Instruct patients to swallow the tablets whole with or without food and not to split, crush, chew, or dissolve the tablets.

- Advise patients if a dose of AQVESME is missed by 4 hours or less, to take the scheduled dose as soon as possible. If a dose of AQVESME is missed by more than 4 hours, advise the patient to not take a replacement dose and wait until the next scheduled dose.
- Advise patients to store AQVESME in a refrigerator at 2°C to 8°C (36°F to 46°F). Advise patients AQVESME may be stored at room temperature for up to 3 months. If removed from the refrigerator, advise the patient to store AQVESME at room temperature, 20°C to 25°C (68°F to 77°F), and record the discard date in the space provided in the blister wallet and/or the carton. The discard date is 3 months after removal of the tablets from the refrigerator. Advise the patient to discard the tablets by the written discard date or by the expiration date, whichever occurs first. Advise patients to store the blister wallets in the original carton until use.

AQVESME™ is a trademark of Agios Pharmaceuticals, Inc.

© 2025 Agios Pharmaceuticals, Inc.

Manufactured for and Distributed by:

Agios Pharmaceuticals, Inc.  
Cambridge, MA 02139

AG-PI-00X