



Supporting the health and educational success of children and youth...

Dear School Administrator or other Education Professional,

The Oregon School Nurses Association is seeking nominations for the *2023 Oregon School Nurse or School Nurse Administrator of the Year* award. Enclosed are the necessary nomination forms and instructions. Nomination packets must be received by OSNA by **Friday, January 27, 2023**.

Your school nurse or nurse administrator is an integral member of the education team, and plays an important role in ensuring that all students in your district receive the support, assessment, and follow up needed to keep them safe, healthy, and ready to learn. School nurses improve attendance, health and wellness, and educational attainment. We would like to recognize a school nursing professional who goes above and beyond the expectations of their position, who handles difficult situations with exceptional grace and professionalism, and who is an unrelenting advocate for all students, staff, and school community members in their care.

The selection committee uses the *Framework for the 21st Century School Nursing Practice* to select the award winner(s). Please carefully review this Framework, as well as the attached rubric that will be used by the selection committee, when writing your nomination letters. A copy of this framework, as well as our selection rubric is attached.

Please consider the exceptional attributes your particular school nurse or nurse administrator brings to the students and staff in your schools, and nominate one of them today.

Nominations must be returned to Tamara Bow by Friday, January 27, 2023.

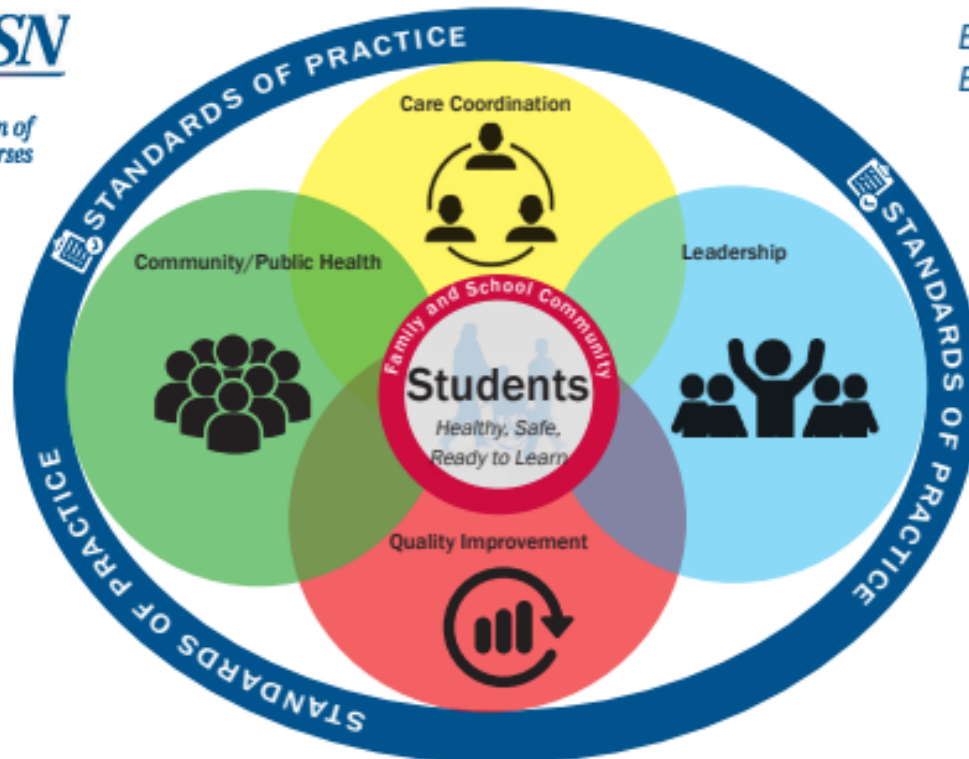
Sincerely Yours,

Tamara Bow, OSNA Vice President
(tbow.osna@gmail.com)

Framework for 21st Century School Nursing Practice™



BETTER HEALTH.
BETTER LEARNING.™



NASN's *Framework for 21st Century School Nursing Practice™* (the *Framework*) provides structure and focus for the key principles and components of current day, evidence-based school nursing practice. It is aligned with the Whole School, Whole Community, Whole Child model that calls for a collaborative approach to learning and health (ASCD & CDC, 2014). Central to the *Framework* is student-centered nursing care that occurs within the context of the students' family and school community. Surrounding the students, family, and school community are the non-hierarchical, overlapping key principles of *Care Coordination*, *Leadership*, *Quality Improvement*, and *Community/Public Health*. These principles are surrounded by the fifth principle, *Standards of Practice*, which is foundational for evidence-based, clinically competent, quality care. School nurses daily use the skills outlined in the practice components of each principle to help students be healthy, safe, and ready to learn.

 Standards of Practice	 Care Coordination	 Leadership	 Quality Improvement	 Community/Public Health
<ul style="list-style-type: none"> Clinical Competence Clinical Guidelines Code of Ethics Critical Thinking Evidence-based Practice NASN Position Statements Nurse Practice Acts Scope and Standards of Practice 	<ul style="list-style-type: none"> Case Management Chronic Disease Management Collaborative Communication Direct Care Education Interdisciplinary Teams Motivational Interviewing/Counseling Nursing Delegation Student Care Plans Student-centered Care Student Self-empowerment Transition Planning 	<ul style="list-style-type: none"> Advocacy Change Agents Education Reform Funding and Reimbursement Healthcare Reform Lifelong Learner Models of Practice Technology Policy Development and Implementation Professionalism Systems-level Leadership 	<ul style="list-style-type: none"> Continuous Quality Improvement Documentation/Data Collection Evaluation Meaningful Health/Academic Outcomes Performance Appraisal Research Uniform Data Set 	<ul style="list-style-type: none"> Access to Care Cultural Competency Disease Prevention Environmental Health Health Education Health Equity Healthy People 2020 Health Promotion Outreach Population-based Care Risk Reduction Screenings/Referral/Follow-up Social Determinants of Health Surveillance

ASCD & CDC. (2014). Whole school whole community whole child: A collaborative approach to learning and health. Retrieved from <http://www.ascd.org/ASCD/pdf/siteASCD/publications/wholechild/wsc-a-collaborative-approach.pdf>