

Greg Weykamp, ASLA, LEED AP BD+C
Edgewater Resources, LLC



SOBA 2019

Going Beyond ADA to Improve Access

- Make the Waterfront Accessible To Everyone, Regardless of Age, Income, or Ability
 - *Port of Rochester Marina*
 - *Discovery Center Great Lakes*
 - *South Haven All Seasons Marina*
 - *Idaho Lucky Peak*
 - *Frisco Bay Marina*
 - *East Tawas Marina*



ADA Makes DOCKS Accessible

- **ADA Standards Make DOCKS Accessible, But It Does Not Necessarily Make BOATS Accessible**
 - *Fixed Docks Are the Easy Solution for ADA Compliance, But Water Levels, Boat Freeboard, and User Abilities All Impact Accessibility*





SOBA 2019

Going Beyond ADA to Improve Access



SOBA 2019

Going Beyond ADA to Improve Access



SOBA 2019

Going Beyond ADA to Improve Access

Shumway Marine, 2017



SOBA 2019

Going Beyond ADA to Improve Access



SOBA 2019

Going Beyond ADA to Improve Access

- **Adjustable Platforms Provide Flexibility and Accessibility Across a Range of Conditions**
 - *Platforms Provided at Central Locations to Supplement ADA Compliance*
 - *Platforms Adjust as Needed Depending on Water Levels, Boat Freeboard, and User Abilities and Needs*
 - *Platforms Provide Multiple Uses, Including Small Boat Launching, Paddling Classes, etc*







SOBA 2019

Going Beyond ADA to Improve Access



SOBA 2019

Going Beyond ADA to Improve Access

- **Blueway Trails Provide Access For Paddlers**
 - *Paddlesports Are the Lowest Cost Introduction to Boating*
 - *Paddlesports Attract the Broadest Range of Boaters*
 - *Grant Funding Available for Accessible Launch Facilities*
 - *Paddlesport Rentals Can Generate Significant Revenue in Marinas*





SOBA 2019

Going Beyond ADA to Improve Access



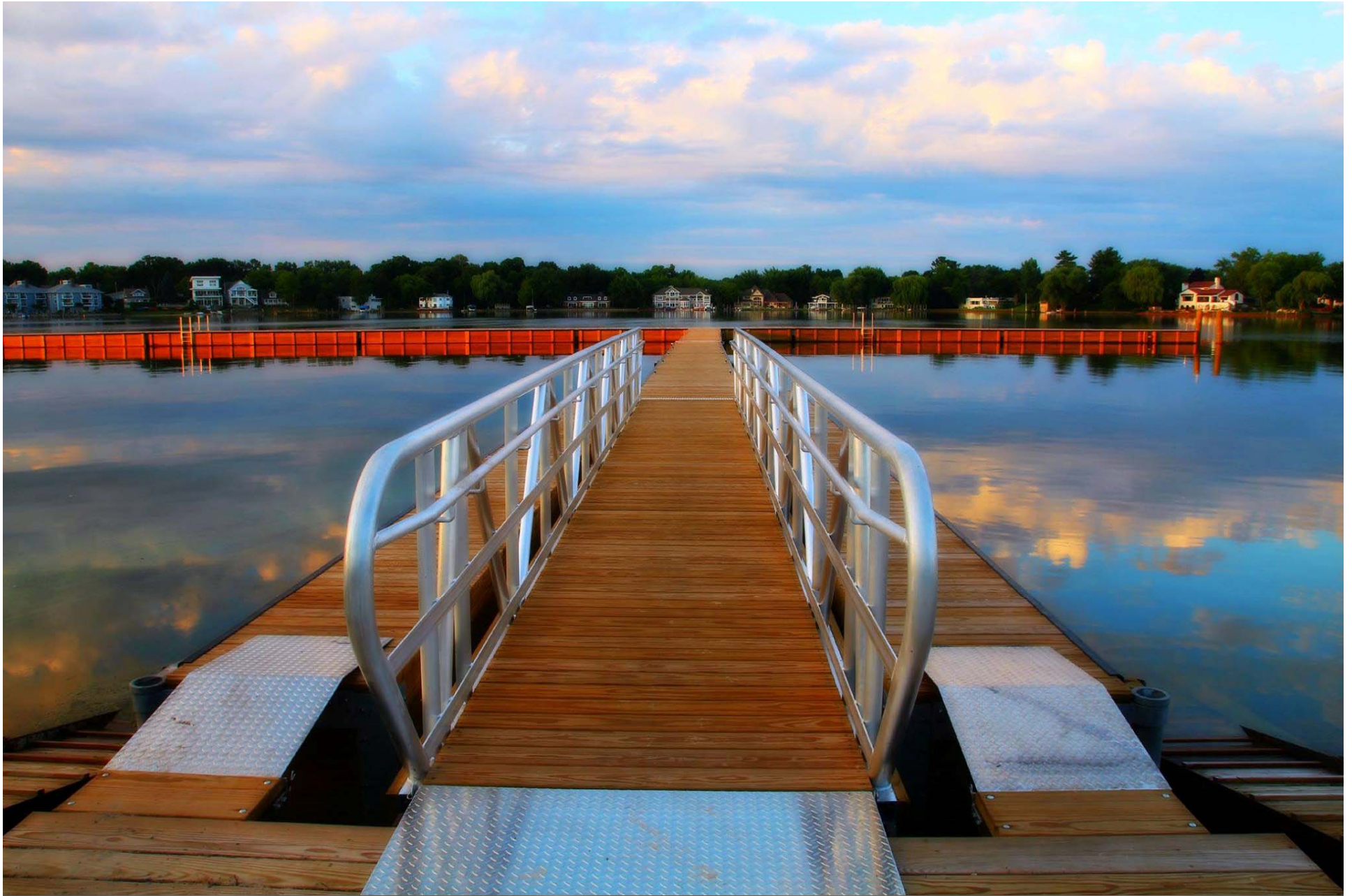
SOBA 2019

Going Beyond ADA to Improve Access



SOBA 2019

Going Beyond ADA to Improve Access



SOBA 2019

Going Beyond ADA to Improve Access

Public Access Facilitates Approval

- **Providing Amenities for the Whole Community, Not Just Your Boaters, Builds Community Support**
 - *In Dense Urban Areas, Community Access May Be a Requirement, Not Just a Good Idea*
 - *Public Access Can Be Part of a Compromise that Eases Permitting Issues*
 - *Public Access at Low Cost Builds Positive Public Relations and Grows Our Industry*



31st Street Harbor



SOBA 2019

Going Beyond ADA to Improve Access

An aerial photograph of the 31st Street Harbor in Chicago. The harbor is filled with numerous sailboats and motorboats docked at wooden piers. To the right of the harbor is a modern park area with winding paths, green lawns, and several circular landscaped islands. These islands feature colorful, abstract sculptures in red, yellow, and blue. A paved road with a crosswalk runs along the right side of the park. In the background, the city skyline is visible across the water.

31st Street Harbor



SOBA 2019

Going Beyond ADA to Improve Access

Existing Conditions, 2011



SOBA 2019

Going Beyond ADA to Improve Access

Master Plan



SOBA 2019

Going Beyond ADA to Improve Access

Near Completion, 2016



SOBA 2019

Going Beyond ADA to Improve Access

View From Promenade Overlook Site, 2011



Board of Rochester Marina

Going Beyond ADA to the City of New York

View From Promenade Overlook



Port of Rochester Marina

Going Beyond ADA to the City of New York

Former Port of Entry Secure Area



Port of Rochester Marina

Going Beyond ADA to the City of New York

View of Former Secure Port of Entry Area



Port of Rochester Marina

Going Beyond ADA to the City of New York

Genesee Riverway Promenade



SOBA 2019

Going Beyond ADA to Improve Access

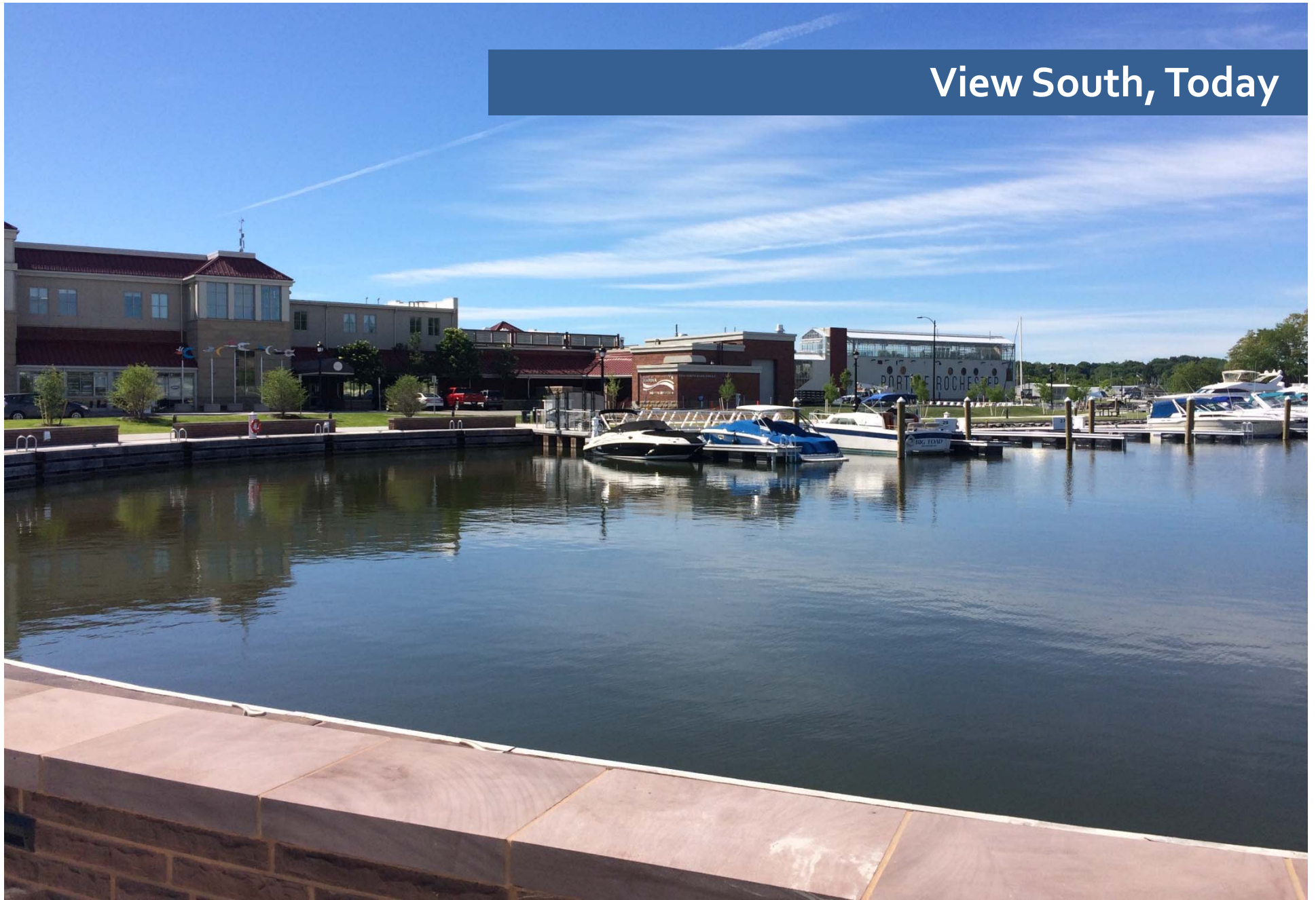
View South, 2011



Board of Rochester Marina

Going Beyond ADA to the City of New York

View South, Today



Port of Rochester Marina

Going Beyond ADA to the City of New York

Promenade Park Space



SOBA 2019

Going Beyond ADA to Improve Access

View North, 2011



Port of Rochester Marina

Going Beyond ADA to the Port of Rochester, New York

View North, Today



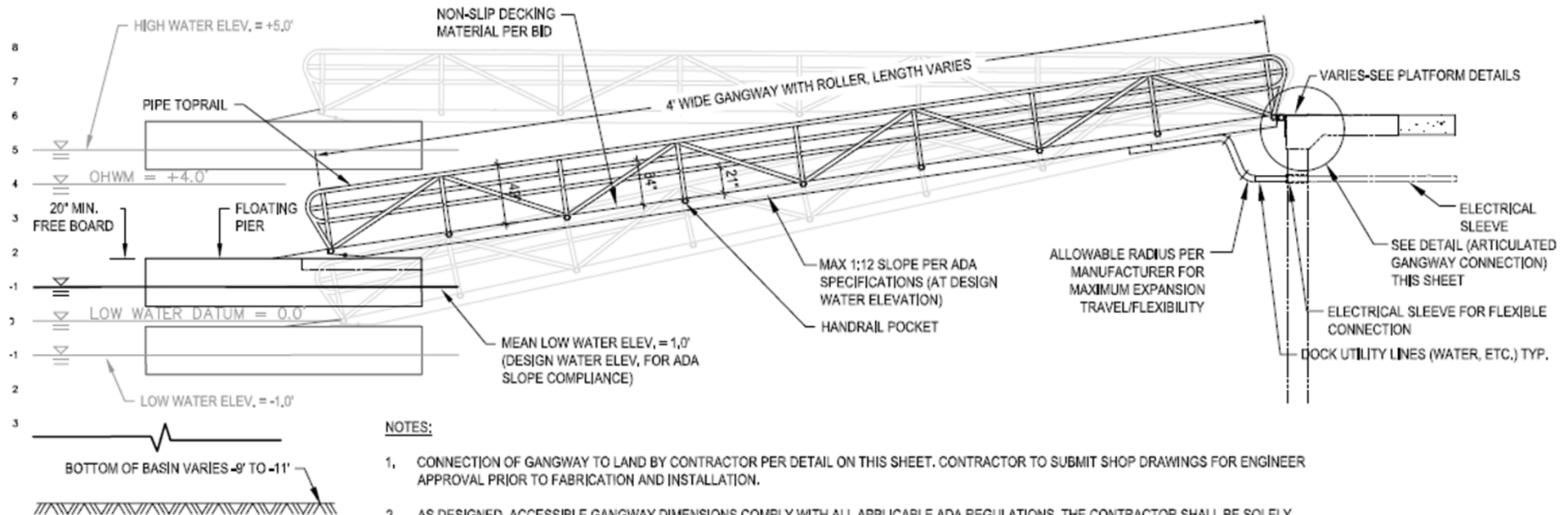
Port of Rochester Marina

Going Beyond ADA to the next level



SOBA 2019

Going Beyond ADA to Improve Access



6 GANGWAY RAMP DETAIL

SCALE: NOT TO SCALE



SOBA 2019

Going Beyond ADA to Improve Access



SOBA 2019

Going Beyond ADA to Improve Access



SOBA 2019

Going Beyond ADA to Improve Access



West Gangway, 2017



SOBA 2019

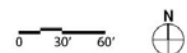
Going Beyond ADA to Improve Access



Discovery Center Rotary Camps
Traverse City, Michigan

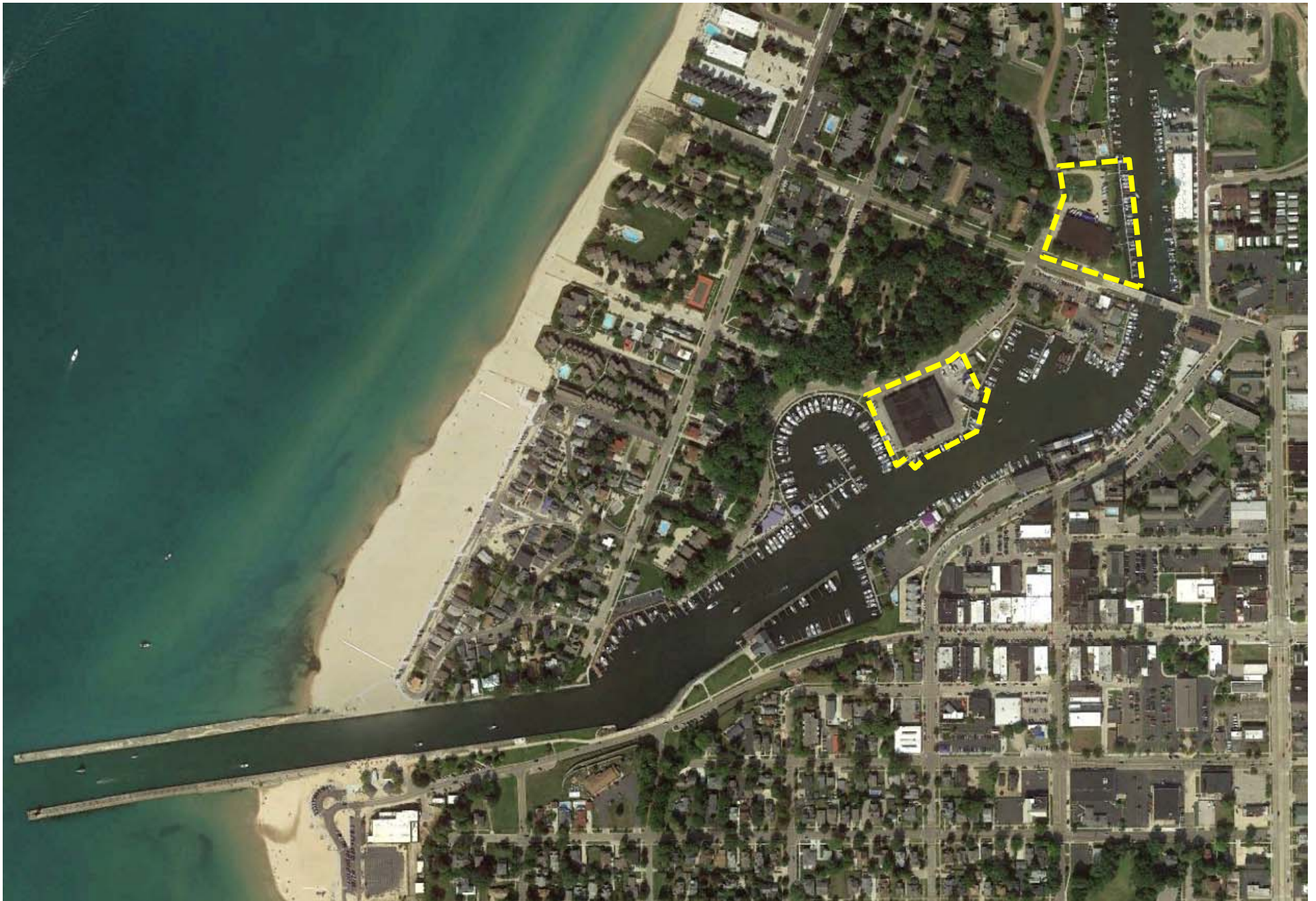
Final Consensus Plan

March 29, 2017



SOBA 2019

Going Beyond ADA to Improve Access



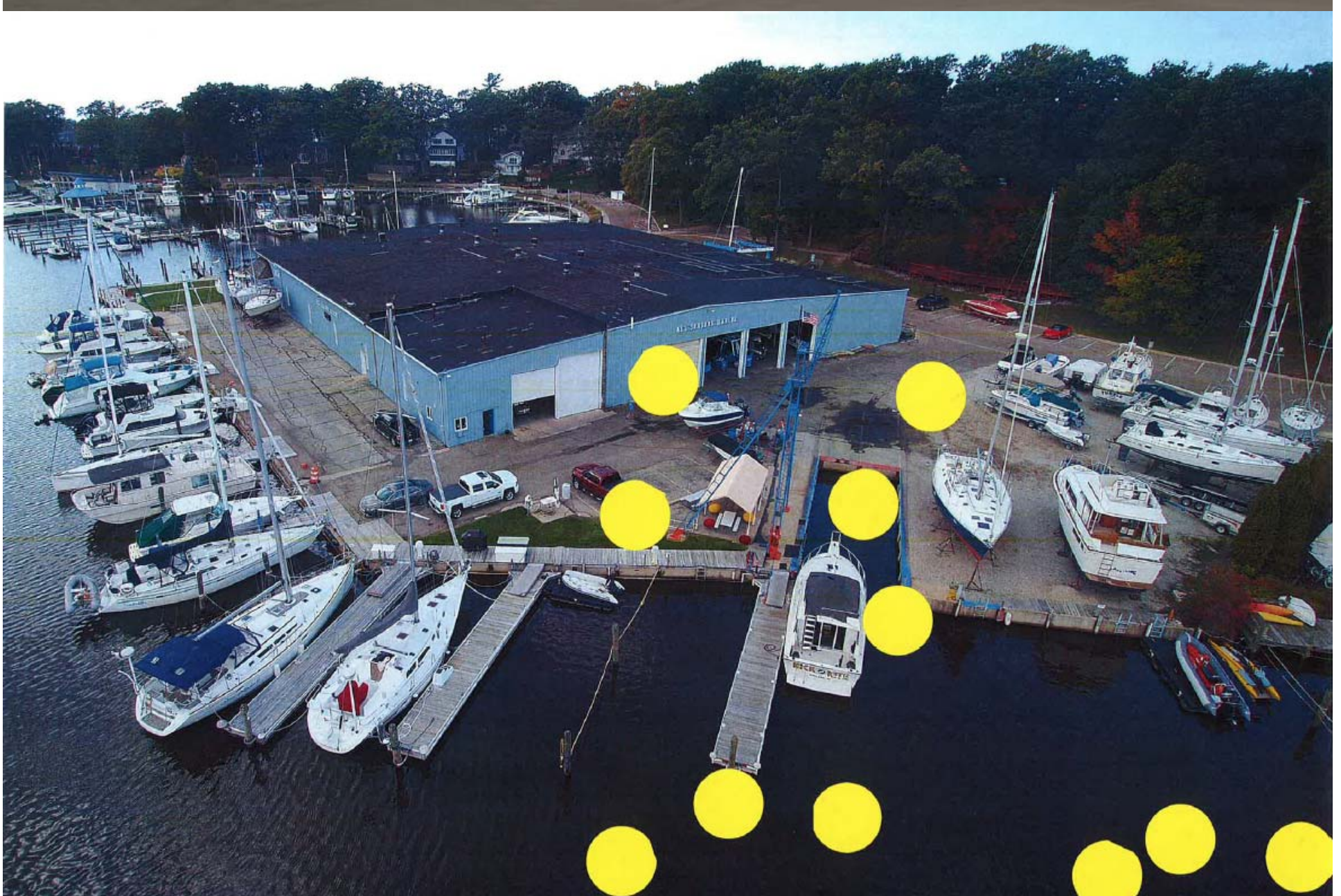
SOBA 2019

Going Beyond ADA to Improve Access



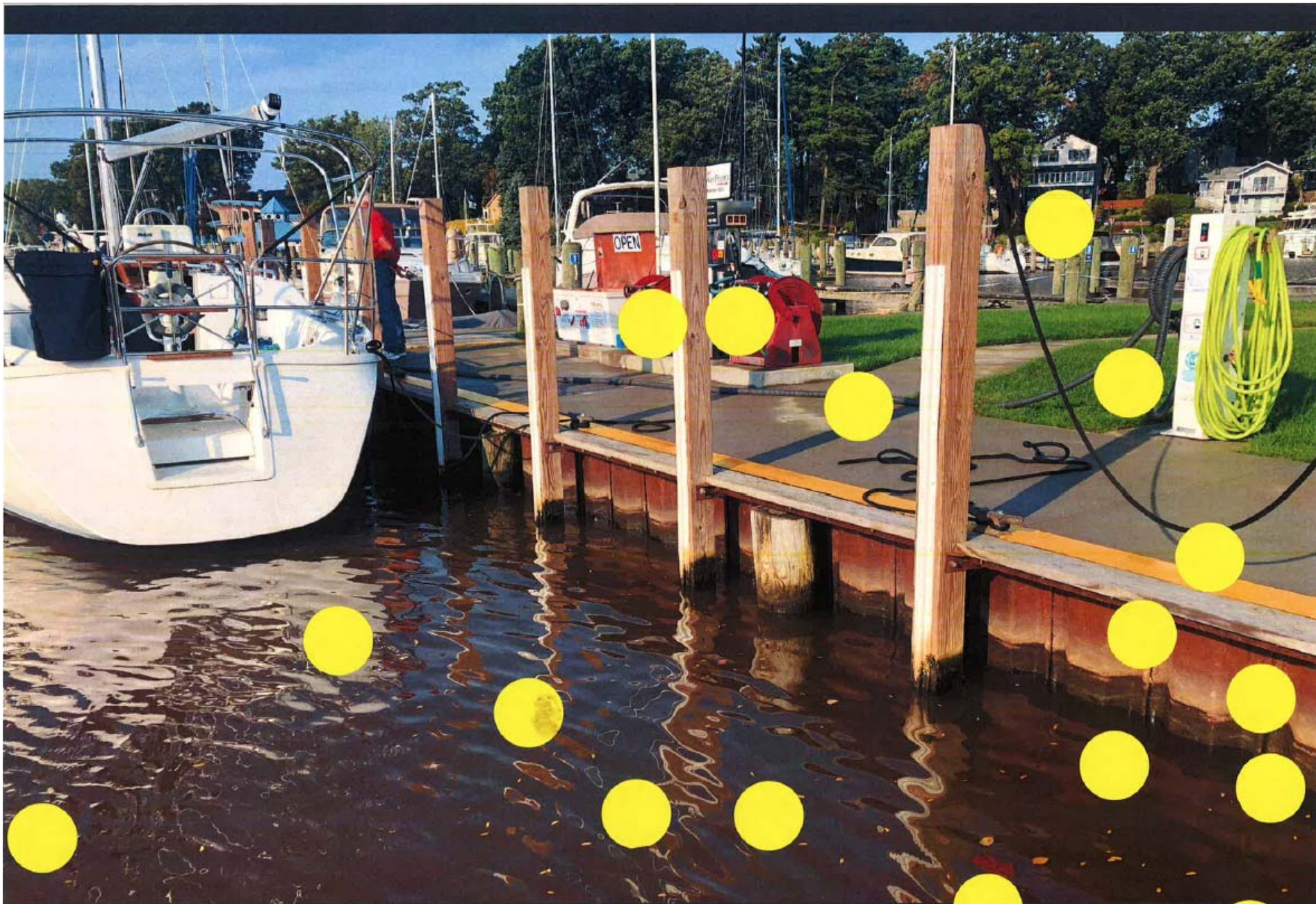
SOBA 2019

Going Beyond ADA to Improve Access



South Haven Maritime District

All Seasons Marine Future Use Planning



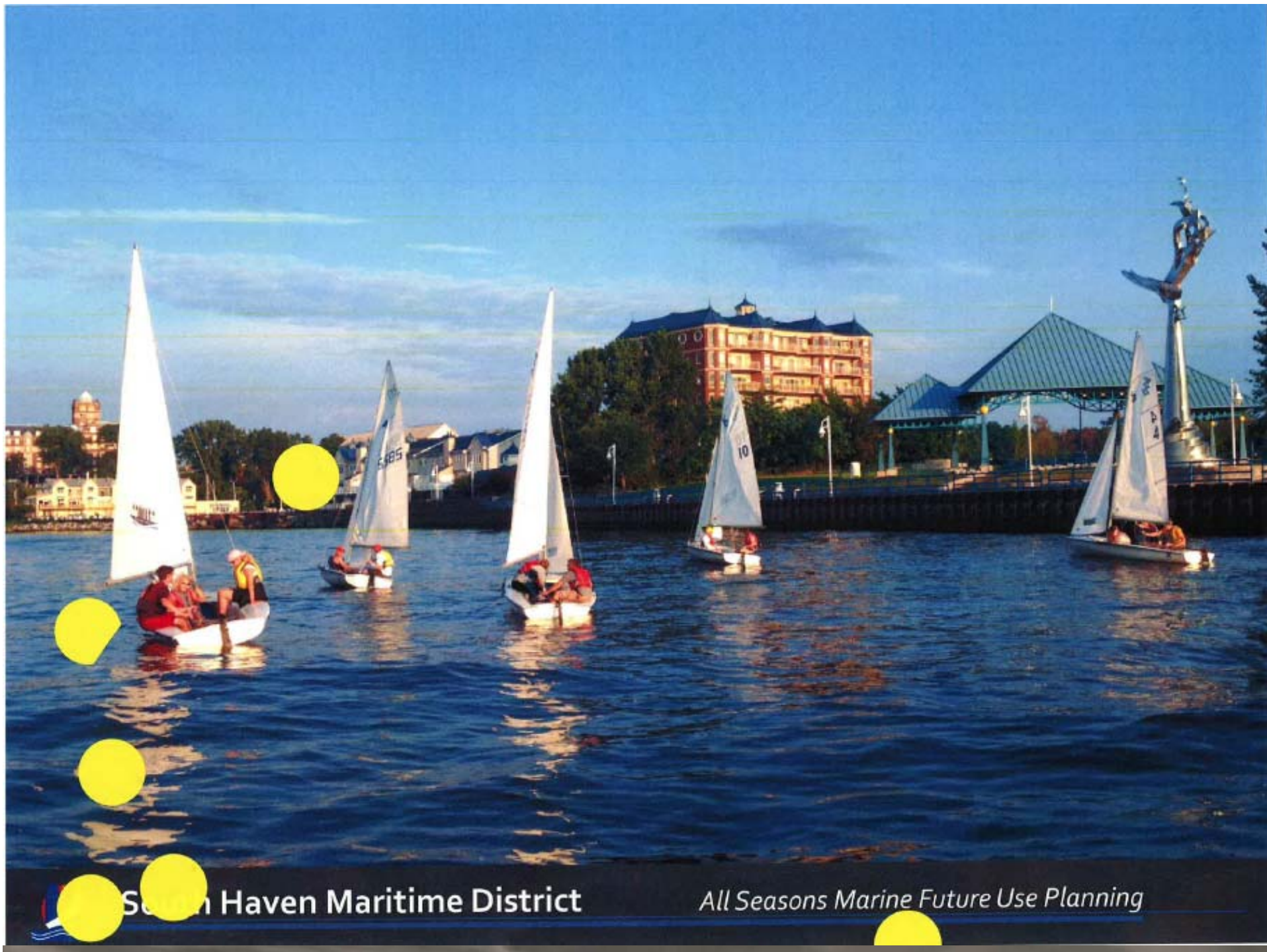
South Haven Maritime District

All Seasons Marine Future Use Planning



South Haven Maritime District

All Seasons Marine Future Use Planning



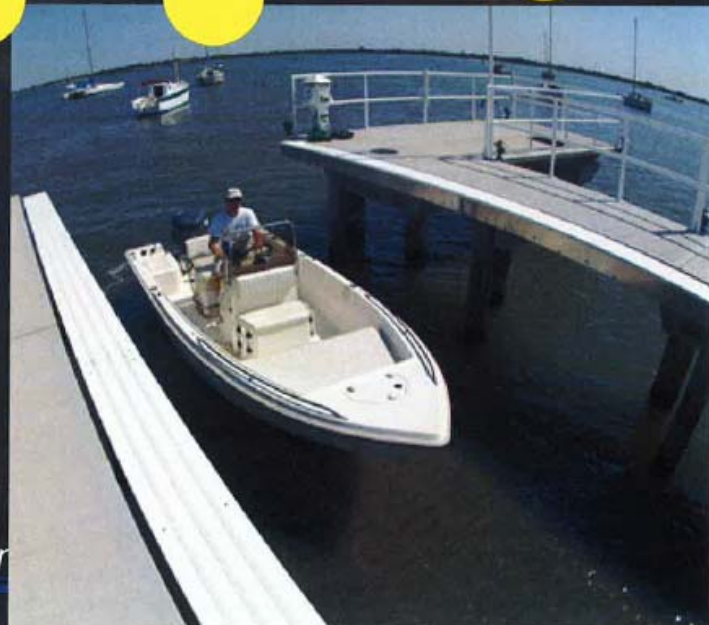
 South Haven Maritime District

All Seasons Marine Future Use Planning

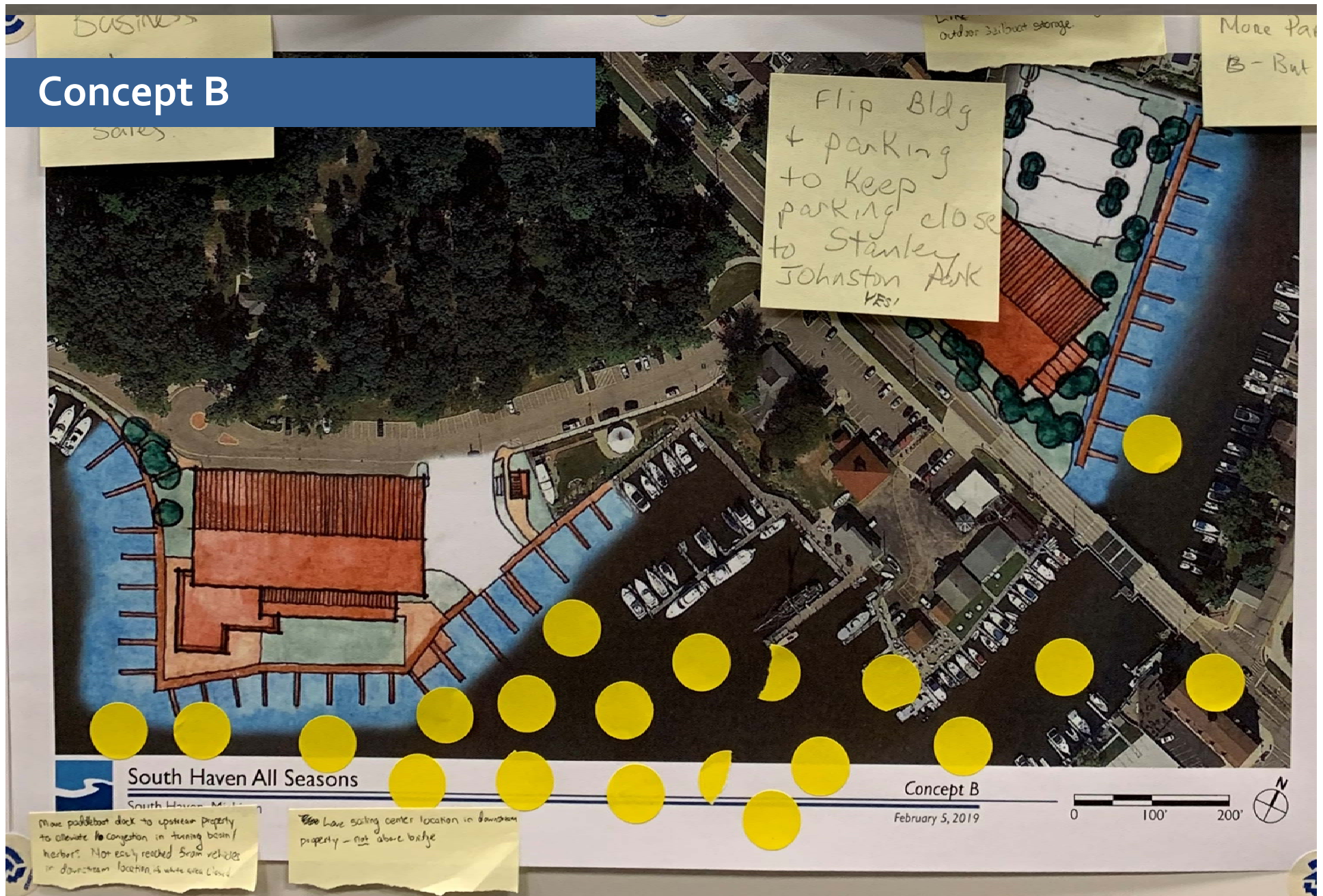


South Haven Maritime District

All Seasons Marine Future Use Planning



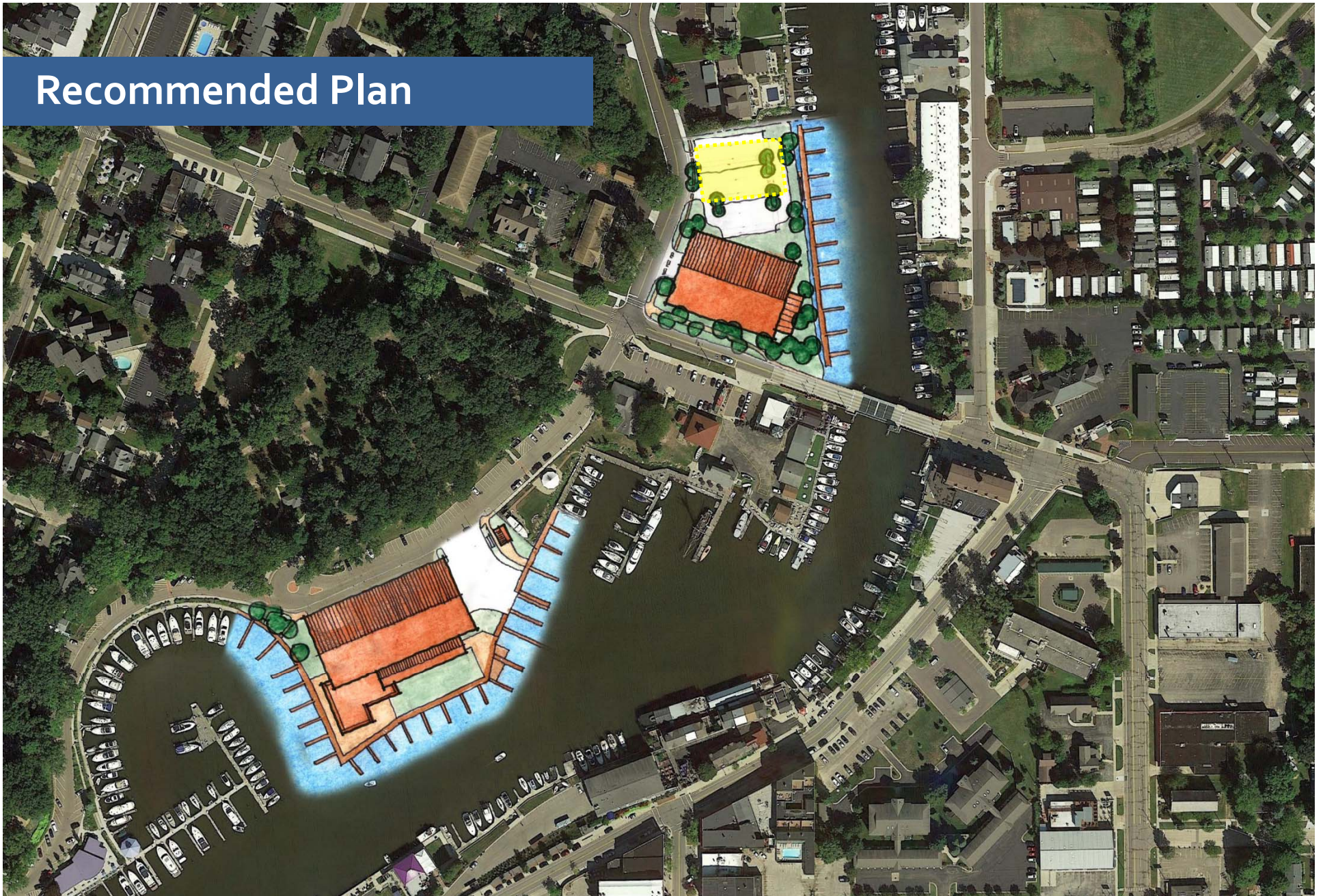
Concept B



SOBA 2019

Going Beyond ADA to Improve Access

Recommended Plan



SOBA 2019

Going Beyond ADA to Improve Access



SOBA 2019

Going Beyond ADA to Improve Access



SOBA 2019

Going Beyond ADA to Improve Access



SOBA 2019

Going Beyond ADA to Improve Access



SOBA 2019

Going Beyond ADA to Improve Access

Frisco, Colorado



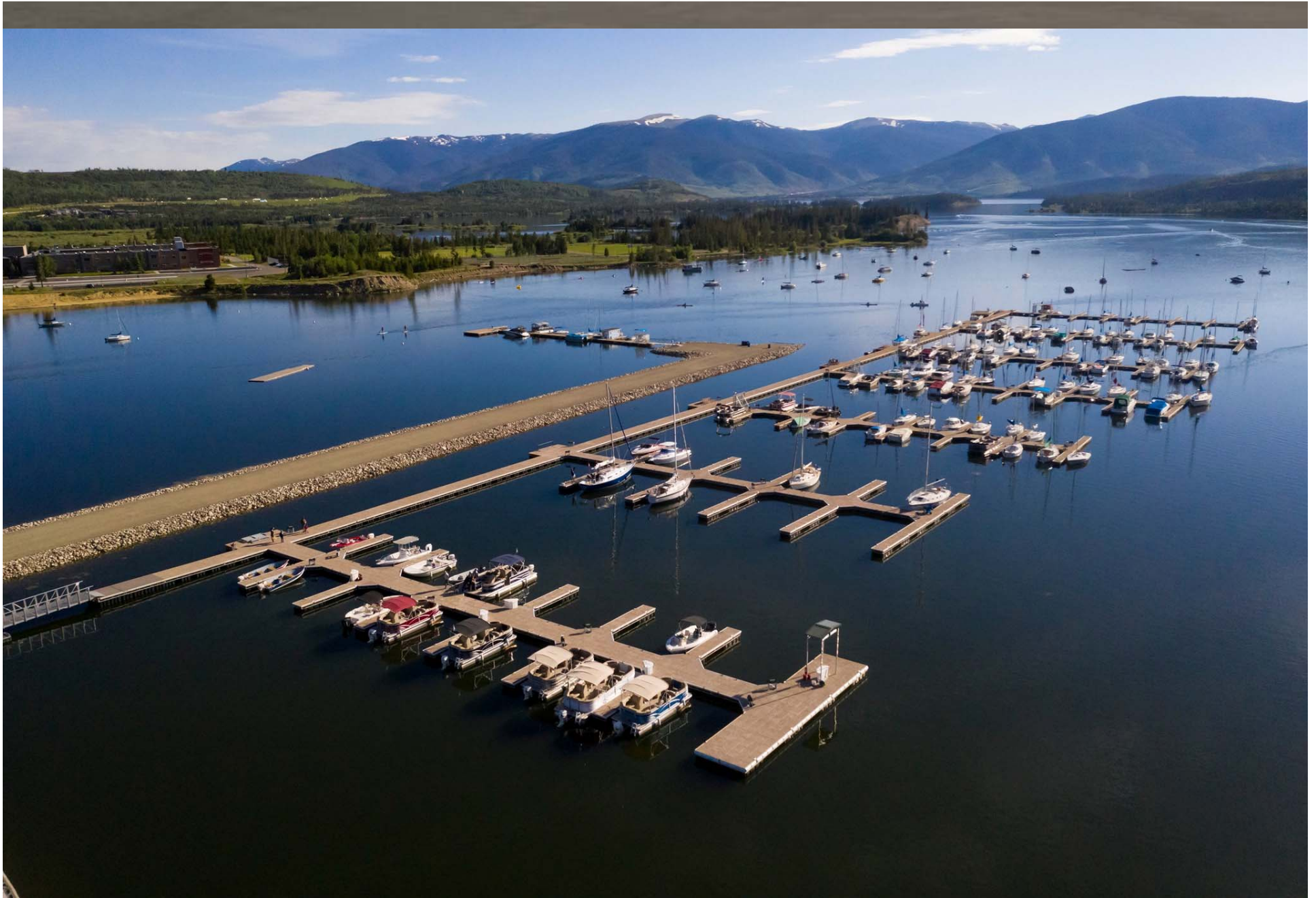
Frisco, Colorado





SOBA 2019

Going Beyond ADA to Improve Access



SOBA 2019

Going Beyond ADA to Improve Access



SOBA 2019

Going Beyond ADA to Improve Access



SOBA 2019

Going Beyond ADA to Improve Access



Thank you

Greg Weykamp, ASLA, LEED AP BD+C
269 408 6562
www.edgewaterresources.com