

NAPNAP-LA

2015-2016 NAPNAP-LA President's Message

**Karla Haynes, RN, MPH, MS, CPNP,
NAPNAP-LA President**



**Karla Haynes
President
NAPNAP-LA
2015-2016**

Dear Members,

Another academic year has begun, and as I start my 2015-2016 Presidential Term, I see opportunities and challenges ahead. The NAPNAP-LA Board received valuable feedback from our members via the annual membership survey, and we have listened. I am pleased to announce that NAPNAP-LA will be offering some new events this year, in addition to our traditional professional development offerings. There will be increased social and informal networking opportunities, starting with our "Meet the Board" Happy Hour at Malo in Los Angeles October 9!

NAPNAP-LA will continue to sponsor all of its educational programs, including the Southwest Regional Conference in beautiful Palm Springs November 6-8 and the Regional Conference at Children's

Hospital Los Angeles April 23, 2016. In addition, several educational dinners are in the planning stage, so wherever you live or work there will be a professional development opportunity for you.

Community outreach efforts will continue as well, with the "Raising a Healthy Tween-Ager" project. This year, though, I am excited to say educational materials are in development for use in your own practice. Stay tuned!

In the spirit of doing more to reach a greater audience, NAPNAP-LA will also increase its social media presence to keep you better informed of events affecting nurse practitioners. Plans for a NAPNAP-LA t-shirt are in development, so this year you will be able to wear our logo with pride!

This is a wonderful time to be a pediatric nurse practitioner. While we have many new plans, we are always happy to hear your thoughts and ideas. Please let us know how we can improve NAPNAP-LA or serve you better by emailing me at la.napnap@gmail.com. We would love to have your help as well, so please consider bringing your talents to NAPNAP-LA by volunteering or joining the Board. **There is so much we can do to care for children together.**

September 2015
Volume 4, Issue 1

Inside this issue:

President's Message	1
NAPNAP-LA Membership Survey Results	2
Annual Conference	2
Member Spotlight	3
Legislative Update	3
Community Outreach Update	4
Student News	4
Southwest Regional Conference	4

**NAPNAP-LA Board
2015-2016:
(Front row L to R)
M. Whitten,
B. Salvetti, A. Evans,
K. Waters
(Back row L to R)
L. Larsen,
S. Ia, K. Haynes,
S. Stephenson,
L. Messenger,
A. Tizano,
P. Quan**



LA Chapter Moving Ahead:

- Follow NAPNAP-LA on Twitter and Facebook
- Happy Hour at Malo, October 9, 2015
- Save the date! Southwest Regional Conference, Nov. 6-8, 2015

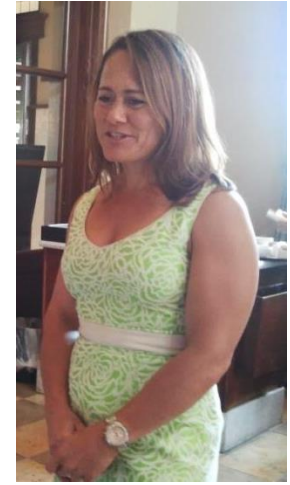
NAPNAP-LA Annual Membership Survey

Shannan Stephenson, RN, MSN, CPNP
NAPNAP-LA Past President

NAPNAP-LA's annual membership survey was sent to members via Survey Monkey in May and July, 2015. The majority of survey participants were full- or part-time NPs in primary care or sub-specialty care. Seventy-five per cent of respondents were satisfied or very satisfied with NAPNAP-LA. Members were interested in and/or participated in a variety of our programs and activities. It was noteworthy that only 15% of respondents were interested in legislative activities. NAPNAP-LA is committed to increasing our members' legislative awareness and advocacy in this era of health care reform.

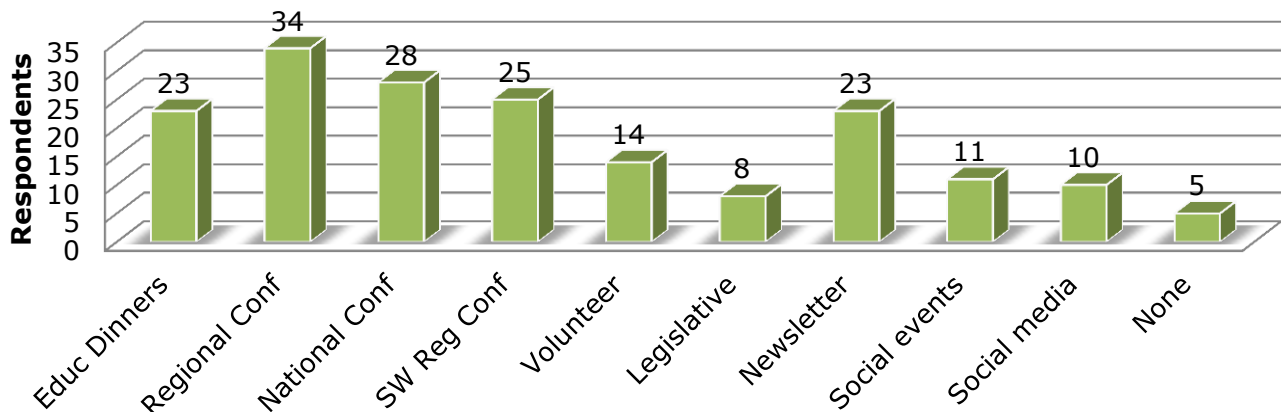
In response to NAPNAP-LA membership, we are increasing the number and type of NAPNAP-LA social events in the coming year. Nearly all respondents agree that childhood obesity, immunizations, literacy, and early adolescent mental health are important issues for our professional organization to continue to address. Other important issues, concerns and suggestions were documented and will be considered in NAPNAP-LA's strategic planning.

Thank you so much to everyone that participated!



Shannan Stephenson
NAPNAP-LA Past President and
Community Outreach Co-Chair

NAPNAP-LA Program Participation



NAPNAP-LA and CHLA 2016 Regional Conference Update

Catherine Goodhue, CPNP, and Debbie Harris, CPNP
NAPNAP-LA Program Committee Co-Chairs

MARK YOUR CALENDAR FOR SATURDAY, APRIL 23, 2016!!! NAPNAP-LA and the Nurse Practitioners at Children's Hospital Los Angeles (CHLA) are co-sponsoring our Annual Regional Conference. Thanks to all who attended the Regional Conference in April 2015 and suggested various topics and speakers. The Program Committee will be meeting and discussing your suggestions. If you have a topic, a favorite speaker, or want to be part of the Program Committee, please email Cat Goodhue (cgoodhue@chla.usc.edu) or Deb Harris (dharris@chla.usc.edu).

We will be mailing out the registration flyer in early March. The registration form will also be emailed to all NAPNAP-LA members as well as posted on our website, www.lanapnap.org.

This annual educational event will take place between 7:30am-4:45pm in the John Stauffer Conference Room at Children's Hospital Los Angeles. Six CEU's, parking, breakfast, and lunch will be available to conference attendees. NAPNAP-LA will also be awarding our PNP Student Scholarship, Colleague of Year and Outstanding NP of the Year awards during the networking and mentoring luncheon. Be sure to save the date!



Cat Goodhue & Debbie Harris,
NAPNAP-LA Program Co-Chairs

NAPNAP-LA Member Spotlight



**Chi Phan, RN, MSN, CPNP
NAPNAP-LA Scholarship Chair**

Chi Phan is a Pediatric Nurse Practitioner with the Division of Plastic and Maxillofacial Surgery at Children’s Hospital Los Angeles (CHLA). Chi’s clinical responsibilities involve care coordination for the patients of the Craniofacial and Cleft Center who were born with anomalies of the head and face including cleft lip and palate and craniosynostosis, often in syndromic forms such as Apert Syndrome or Crouzon Syndrome.

Due to the complex needs of this population, patients have annual evaluations by the multidisciplinary craniofacial team that consists of Plastic Surgery, Otolaryngology, Pediatrics, Pulmonology, Dentistry, Orthodontics, Genetics, Social Work, Psychology, Audiology, Speech Pathology and Nutrition. A group led by the Craniofacial Nurse Practitioners provides coordination for patients with congenital and acquired facial paralysis with a variety of etiologies.

Chi also leads the newly established Facial Paralysis Team at CHLA, providing care coordination for patients with congenital and acquired facial paralysis with a variety of etiologies.

Chi has worked as a nurse at Lurie Children’s Hospital of Chicago while pursuing her Master of Science in Nursing at Rush University in Chicago, IL. Chi has also worked as a nurse at Children’s Hospital Orange County and as a travel nurse at different pediatric hospitals in California. She completed her undergraduate studies at Wellesley College in Wellesley, MA.

NAPNAP-LA Legislative Update

Kaaren Waters, DNP, RN, CPNP

The California State Legislature is now on recess until January 2016, when SB323 will be reintroduced. This bill will permit NPs to practice to the full extent of our education and training. It is a two year bill, which can be reconsidered in the upcoming legislative session. Therefore, 2016 will be a critical year for California NPs! This past legislative session, AB637 was passed allowing NPs and PAs to create and sign Physician Orders for Life Sustaining Treatment forms. AB637 could not have been passed without strong advocacy, reminding us of the importance of educating members of the legislature to allow advanced practice nurses full scope of practice in California.



California Gov. Jerry Brown signed off on one of the strictest school vaccination laws in the country on June 30, 2015—one day after the state legislature gave the measure final approval.

"The science is clear that vaccines dramatically protect against a number of infectious and dangerous diseases," Brown said in a signing statement. "While it's true that no medical intervention is without risk, the evidence shows that immunization powerfully benefits and protects the community."

Starting July 1, 2016, all children enrolled in public or private schools or day cares must be vaccinated against whooping cough, measles and other diseases, regardless of parents' religious and other personal beliefs. Children with specific medical conditions, such as immune system deficiencies, may be exempt if they have a waiver from their health care provider.

Families who opt out will have to home-school or enroll in an independent study program off school grounds. (Article courtesy of "The Two-Way: Breaking News from NPR," June 30, 2015)



Community Outreach Update

Siem Ia and Shannon Stephenson, Community Outreach Co-Chairs



Siem Ia

With school in session once again, the **NAPNAP-LA Community Outreach Committee** will be collaborating with middle schools to offer the interactive presentation "**Raising a Healthy Tween-Ager**" developed by Shannan Stephenson, RN, MSN, CPNP, NAPNAP-LA's Past President and Community Outreach Co-Chair.

Joining Shannan as Community Outreach Co-Chair is Siem Ia, RN, MSN, CPNP. Shannan and Siem are developing a brochure to go along with the presentation. The brochure includes topics such as healthy development of early adolescents, warning signs of a problem, bullying, and effective parenting skills that help to increase a child's resilience.

NAPNAP-LA's Community Outreach Committee will be hosting a community outreach event at this year's NAPNAP Southwest Regional Conference where we will be collecting small, travel-sized toiletries to donate to homeless teens in Los Angeles. .

As always, volunteers are welcome! If you are interested in being a part of the community outreach projects, please contact Siem Ia at siemia@ucla.edu or [626-757-5684](tel:626-757-5684) or visit lanapnap.org.



Shannan Stephenson

News for NP Students

NP students are encouraged to get connected with NAPNAP-LA. Student feedback on the benefits most valued when joining a professional organization will be used to tailor NAPNAP-LA materials, resources, and events to encourage students to consider NAPNAP membership and participation.

Nurse practitioner students seeking more information about the NAPNAP-LA scholarship and the benefits of student membership are encouraged to contact Andrea Tizano, NAPNAP-LA Student Liaison, at Phone: (714)469-8221 | Email: atizano@chla.usc.edu

"Every child you encounter is a divine appointment."

*Wess Stafford
President Emeritus
Compassion International*

Southwest Regional Conference

The **2015 Southwest Regional Conference** will be held the weekend of **November 6-8, 2015** at the Hyatt Palm Springs, located at 285 North Palm Canyon Drive, Palm Springs, California, USA, 92262 Phone: +1 760 322 9000; Fax: +1 760 322 6009.

RESERVE YOUR ROOM as soon as possible! Multiple events scheduled in the Palm Springs area may cause a shortage of hotel rooms. To register for this exciting conference or to learn more, visit lanapnap.org.

Don't miss this opportunity to get away, get together with colleagues, and learn from pediatric clinical experts in beautiful Palm Springs, California. See you there!



Mary Whitten, NAPNAP-LA SW Regional Conference Co-Chair (Center), Anna Evans (L), and Kaaren Waters (R)



Lanapnap.org

"Caring for Children Together"

