



Coatings Foundations for Amusement Parks
Micro-Credential Theory Exam

Exam Preparation Guide

November 2020

Table of Contents

Introduction	3
Target Audience	3
Requirements.....	4
Exam Blue Print	5
Types of Questions.....	6
Description of Questions	6
Sample Questions	7
Preparation	8
Required Training.....	8
Suggested Study Material	8
Reference Material Provided During Exam.....	8
What to Expect on Test Day.....	9
Remote Online Exam Proctoring.....	9
Examity Demonstration with Automated Proctor	9

Introduction

The Coatings Foundations for Amusement Parks exam is designed to assess whether a candidate has the requisite knowledge, skills and abilities (KSAs) that a person working with amusement park assets should possess to obtain the micro-credential. The 50 questions are based on the KSAs one needs to be successful in the job. It is recommended that a candidate understand the need for corrosion control as it relates to amusement park assets.

Exam Name	Coatings Foundations for Amusement Parks Exam
Time	1 ½ Hours
Number of Questions	50
Format	Live Online Remote Proctoring (Examity*)
Passing Score	Pass or Fail

**Delivered through Examity NOT AT Pearson Testing Center*

Target Audience

Coatings Foundations for Amusement Parks benefits anyone working in the amusement park industry and understands the need for corrosion control. Candidates should understand the importance of coatings as it relates to corrosion control for amusement park assets and be able to explain the four components of a coating, why coatings are used, and the difference between generalized and localized corrosion. Candidates for this micro-credential includes coatings contractors, specification writers, amusement park safety and facility personnel, as well as amusement park owners / operators and maintenance personnel.

Requirements

Requirements for Coatings Foundations for Amusement Parks

Prerequisites
<ul style="list-style-type: none">• None required
Core Course Requirements
Successfully complete the following course: <ul style="list-style-type: none">• + Course – Controlling Corrosion in the Amusement Park Industry
Core Exam Requirements
<ul style="list-style-type: none">• Exam - Coatings Foundations for Amusement Parks Exam
Application Requirements
<ul style="list-style-type: none">• Complete the Professional Code of Conduct (in My Certification Portal)

Exam Blue Print

NOTE: At the end of the exam the candidate will receive a chart with strengths and weaknesses that correspond to the Domains listed below. You will have the option to email or print it.

<p>Domain 1 – Reasons for Coatings</p> <ul style="list-style-type: none"> • Purpose for coating • Aesthetics • Performance • Safety Identification • Corrosion protection 	<p>8-12 %</p>
<p>Domain 2 – Corrosion</p> <ul style="list-style-type: none"> • Define corrosion • Thermal cycle of steel (Newton’s 3rd Law) • Corrosion Process • Electrochemical Cell • Corrosion Rate • Galvanic Series • Types of Corrosion • Service Environment • Immersion or atmospheric • Salts and moisture 	<p>26-30 %</p>
<p>Domain 3 – Coatings Fundamentals</p> <ul style="list-style-type: none"> • Coatings and corrosion • Coating Formulation • Protective and performance properties • Environment considerations • Coating Composition • Pigments • Binder/Resins • Solvents • Additives • Coating Properties • Coating chemistry • Coating Selections • Purpose for coating • Surface types 	<p>20-24 %</p>
<p>Domain 4 – Painting Practices</p> <ul style="list-style-type: none"> • Maintenance Painting • Coating Survey • New construction • Elements of coating survey • Phases of coating conditions survey • Site Survey 	<p>38-42 %</p>

- | | |
|---|--|
| <ul style="list-style-type: none">• Prioritization of areas• Evaluating corrosion• Condition of surface• Substate assessment• Coating Condition• Maintenance Painting Steps• Specifications• Work Plan• Surface Prep• Application• Why do coatings fail• Inadequate surface prep• Coating selection• Mixing/thinning• Environmental Conditions• Application Curing• Inspection• Asset management | |
|---|--|

Types of Questions

Description of Questions

The questions consist of matching and multiple-choice items where some questions may have more than one answer. Items with more than one correct answer may contain the phrase **“SELECT ALL THAT APPLY”** and you will need to select more than one answer choice. The questions are based on the knowledge and skills required to protect assets in the Amusement Park industry.

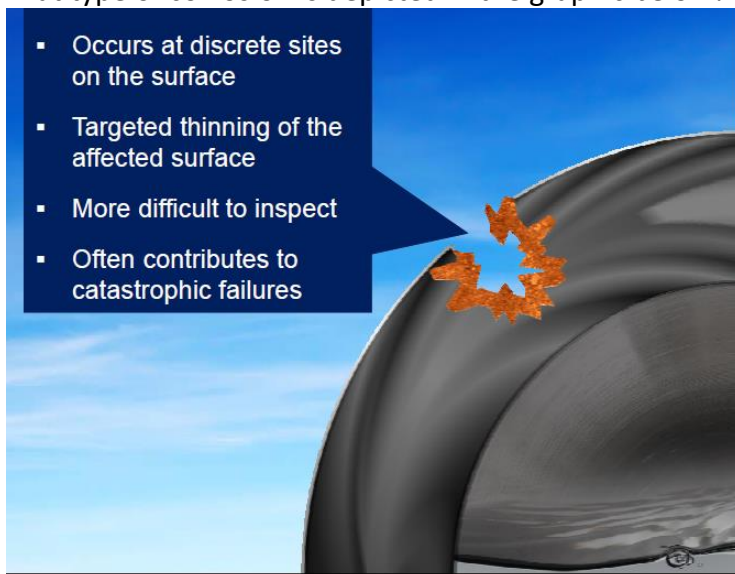
Sample Questions

The sample questions are included to illustrate the formats and types of questions that will be on the exam. Your performance on the sample questions should not be viewed as a predictor of your performance on the actual exam.

1. For a coating system with a long service life, what aspects of the job would you expect to have a higher cost?

SELECT ALL THAT APPLY

- A. Application
 - B. Design
 - C. Surface preparation
2. What type of corrosion is depicted in the graphic below?



- A. Crevice
 - B. Galvanic
 - C. General
 - D. Localized
3. A large hidden cost to the Amusement Park industry that increases unnecessary exposure to liability, shortens the life cycle of the rides, increases maintenance cost, and can easily be controlled is:
 - A. coatings.
 - B. corrosion.
 - C. decontamination.
 - D. solvents.

4. Developing a work plan or specification for the repair/replacement of the substrate and application of the coating system that corrects identified problems is a step in:
 - A. the corrosion rate of steel.
 - B. Newton's 3rd Law.
 - C. maintenance painting surveys.
 - D. surface preparation.

Answer Key:

1. **A, C**

Reference: Amusement Park Handouts Part 3

2. **D**

Reference: Amusement Park Handouts Part 2

3. **B**

Reference: Amusement Park Handouts Part 1

4. **C**

Reference: Amusement Park Handouts Part 4

Preparation

Required Training

NACE Coatings Foundations for Amusement Parks

Suggested Study Material

NACE Coating Inspector Program 1 Manual

NACE Basic Corrosion

Reference Material Provided During Exam

None: This exam is closed book.

What to Expect on Test Day

Remote Online Exam Proctoring

** Remote online proctored exams are offered for select exams.*

The NACE Institute has partnered with Examity to offer remote online proctoring for the Coatings Foundations for Amusement Parks Exam. With the new Examity platform, you can take the exam from home without the need to arrange for a proctor or take the exam at a testing site. Please visit this link for information you should know.

<https://naceinstitute.org/certification-resources/online-exam-proctoring>

Examity Demonstration with Automated Proctor

Please visit this link for a demonstration of the computer-based exam. You will have the opportunity to get familiar with how it all works.

<https://vimeo.com/399635210/2eb75207b8>