



INTRODUCING THE MASBO-EDVENTURES PROFESSIONAL MAP LIBRARY



*WHAT IF...
all of your
stakeholders
truly
understood
the realities
of k-12
education?*

For decades, Edventures in Learning co-founders have helped educate and align the stakeholders of large organizations including Fortune 500 corporations. Now, through a partnership with the **Massachusetts Association of School Business Officials (MASBO)**, **Edventures** is able to offer these award winning strategic learning and engagement tools to Massachusetts K-12 school leaders through a professional “map” library.

Our dialogue-driven visual learning tools have a powerful impact on education stakeholders at all levels of a district. They engage people around key strategic issues. When stakeholders understand the challenges and opportunities within K-12 education, they improve their own performance and more importantly, the performance of the district.

Among others, the initial core applications included in the **MASBO-Edventures Professional Map Library** are:

LifeSpan (The Big Picture of K12 Education)

- Industry-wide forces of change
- Competitive challenges
- Evolving customer demands
- Technological & regulatory changes

Understanding the Case for Change.

Financing Our Future (Understanding the Components of School Finance)

- Revenue components
- Expenses components
- Critical financial issues

Where does our money come from, where does it go, and how do we keep score?

Key Business Processes

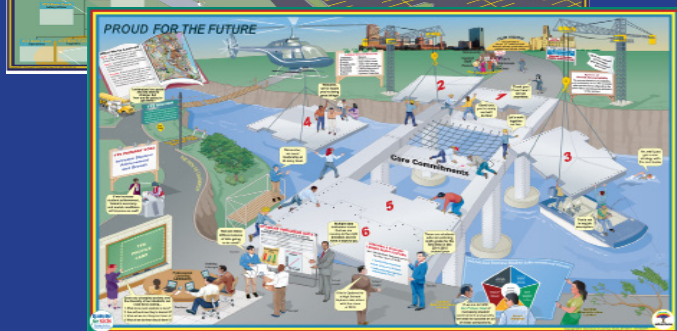
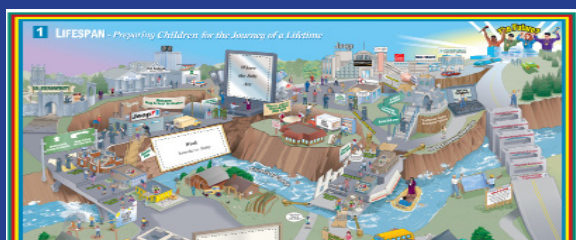
- Internal supplier relationships
- Critical process steps
- Process breakdowns and miscues

How do key processes shape customer value? Where do “I” fit into the process?

Planning Our Future (Our Strategy)

- Vision & Mission
- Strategic initiatives and goals
- What’s in it for “me”? How can I help?

Where are we headed and what’s my role?



For information on how you can access the tools in the **MASBO-Edventures Professional Map Library** please call **1-800-725-5418** or email: danromano@edventuresinlearning.com

Edventures in Learning, Inc.
1916 Colony Drive, Toledo, OH 43614