

The Power of Effective Presentations

How to Make People Listen

**VAN DER VALK NIVELLE
JANUARY 30TH 2026**

Today's agenda

<introduction>

<chapter 1>

<chapter 2>

<chapter 3>

<chapter 4>

<summary>

Okay... let's stop right here...

1

30

5

The Power of Effective Presentations

How to Make People Listen



Nico De Bock

The Big 5 essentials of every smashing presentation



A savanna scene with an elephant, a buffalo, a lion, and a leopard. The background is a soft-focus savanna landscape with a warm, golden light. In the foreground, there are five animals: an elephant on the left, a buffalo in the center, a lion on the right, and a leopard on the far right. The animals are slightly out of focus, creating a sense of depth.

1. Know your audience

2. Start with a bang

3. Design for simplicity

4. Master your delivery

5. Prepare yourself

A savanna scene with an elephant, a buffalo, a lion, and a leopard. The background is a warm, golden-brown color, suggesting a sunset or sunrise. The animals are in the foreground, and the text is overlaid on the image.

1. Know your audience

2. Start with a bang

3. Design for simplicity

4. Master your delivery

5. Prepare yourself

WHO?

WHAT?

Adapt your presentation to every audience



**Board of directors
Senior management**



Conference attendees



Colleagues



Internal/External Auditors



Technical Teams (IT)



Internal trainees

A savanna scene with an elephant, a buffalo, a lion, and a leopard. The background is a warm, golden-brown color, suggesting a sunset or sunrise. The animals are in the foreground, and the text is overlaid on the image.

1. Know your audience

2. Start with a bang

3. Design for simplicity

4. Master your delivery

5. Prepare yourself

S

T

A

R



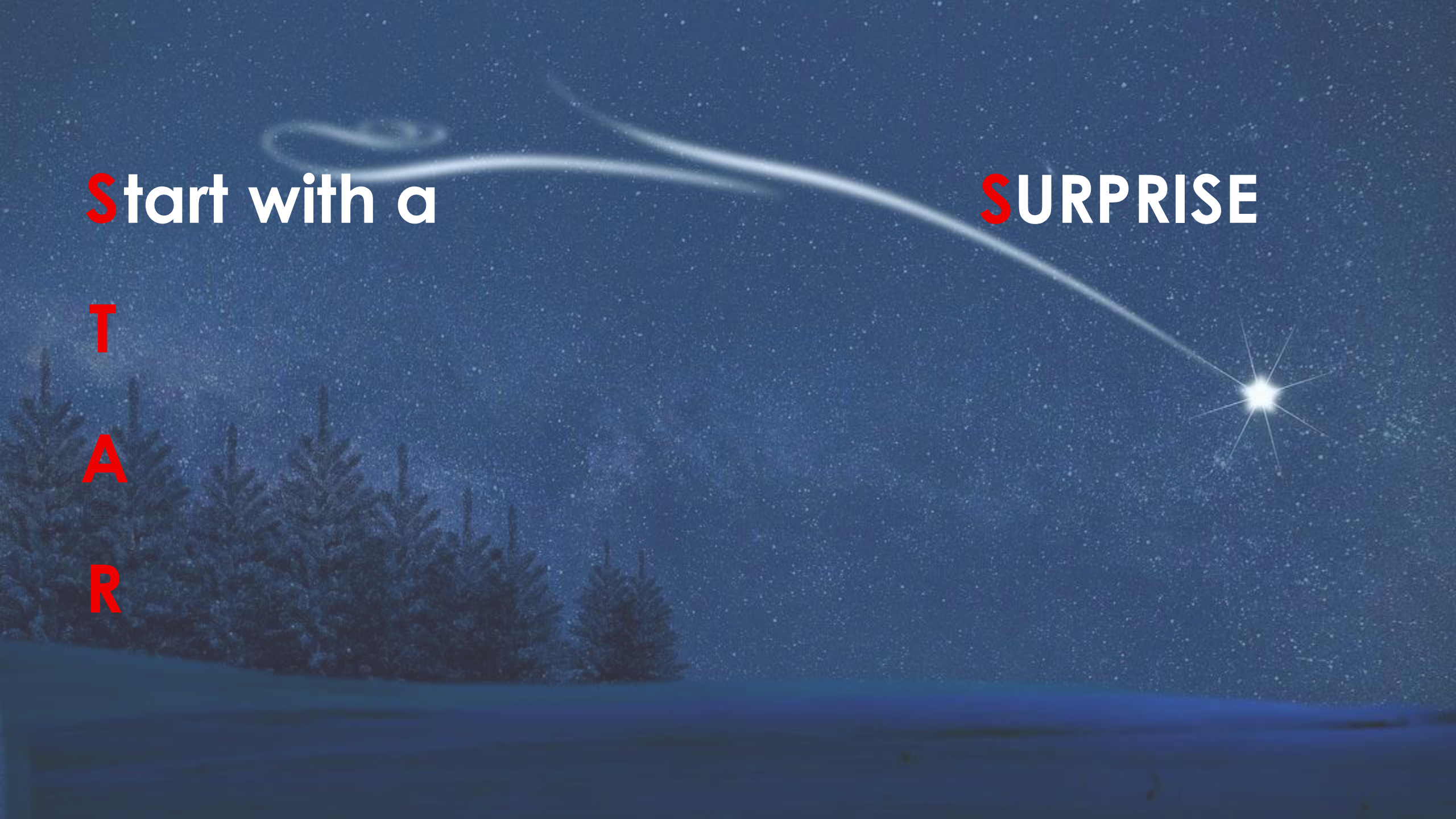
S Start with a

SURPRISE

T

A

R





Every

39 seconds

somewhere in the world a hacker
attack takes place

STart with a

Tell the

A

R

SURPRISE

TAKEAWAYS

Start with a

Tell the

Articulate your

R

SURPRISE

TAKEAWAYS

AUTHORITY

Start with a

Tell the

Articulate your

Reveal the

SURPRISE

TAKEAWAYS

AUTHORITY

ROADMAP

A savanna scene with an elephant, a buffalo, a lion, and a leopard. The background is a warm, golden-brown color, suggesting a sunset or sunrise. The animals are in the foreground, and the text is overlaid on the image.

1. Know your audience

2. Start with a bang

3. Design for simplicity

4. Master your delivery

5. Prepare yourself

KEEP IT

SIMPLE



Overview of technical configuration settings of the updated platform (menu structures, system logs, error dashboards, admin panel)

- General intro to **platform CFG settings**, baseline parameters, and misc. UI items
- Walkthrough of **menu structures**, NAV hierarchy, sub-menus, panel nesting, etc.
- System logs (SysLogs): event tracking, code lookups, partial debug filters, log-group sync
- **Error dashboards**: KPI flags, alert thresholds, redundant status markers, color-coded (mostly)
- **Admin panel layout** (Admin UI): roles, permissions, ACL templates, panel tabs, widget placements
- Note on upcoming perf adjustments (incl. **reduced downtime by approx. 30%**, per ops notes)
- **Log viewer refresh** intervals plus optional data-cache sweep
- **Reporting section overview**—teams should see **faster report generation** without **added workload**
- User groups, default permission bundles, and some **productivity enhancements**
- Misc. config screens, **advanced settings, panel overrides, and small UX tweaks** (leading to **better overall team performance & productivity**)
- **Legacy compatibility**
- Temporary feature flags for upcoming modules
- Additional “**Advanced Config**” section

New updated platform: advantages

- Reduce downtime by 30%
- Speed up team reporting
- No extra workload
- Increased performance and productivity

If you can make this:

New updated platform: advantages

- Reduce downtime by 30%
- Speed up team reporting
- No extra workload
- Increased performance and productivity

out of this...

Overview of technical configuration settings of the updated platform (menu structures, system logs, error dashboards, admin panel)

- General intro to **platform CFG settings**, baseline parameters, and misc. UI items
- Walkthrough of **menu structures**, NAV hierarchy, sub-menus, panel nesting, etc.
- **System logs (SysLogs)**: event tracking, code lookups, partial debug filters, log-group sync
- **Error dashboards**: KPI flags, alert thresholds, redundant status markers, color-coded (mostly)
- **Admin panel layout** (Admin UI): roles, permissions, ACL templates, panel tabs, widget placements
- Note on upcoming perf adjustments (incl. **reduced downtime by approx. 30%**, per ops notes)
- **Log viewer refresh** intervals plus optional data-cache sweep
- **Reporting section overview**—teams should see **faster report generation** without added **workload**
- User groups, default permission bundles, and some productivity enhancements
- Misc. config screens, advanced settings, panel overrides, and small UX tweaks (leading to **better overall team performance & productivity**)
- **Legacy compatibility**
- Temporary feature flags for upcoming modules
- Additional **"Advanced Config" section**

you are already better than
80% of most speakers...

5

bullets

5

words

5

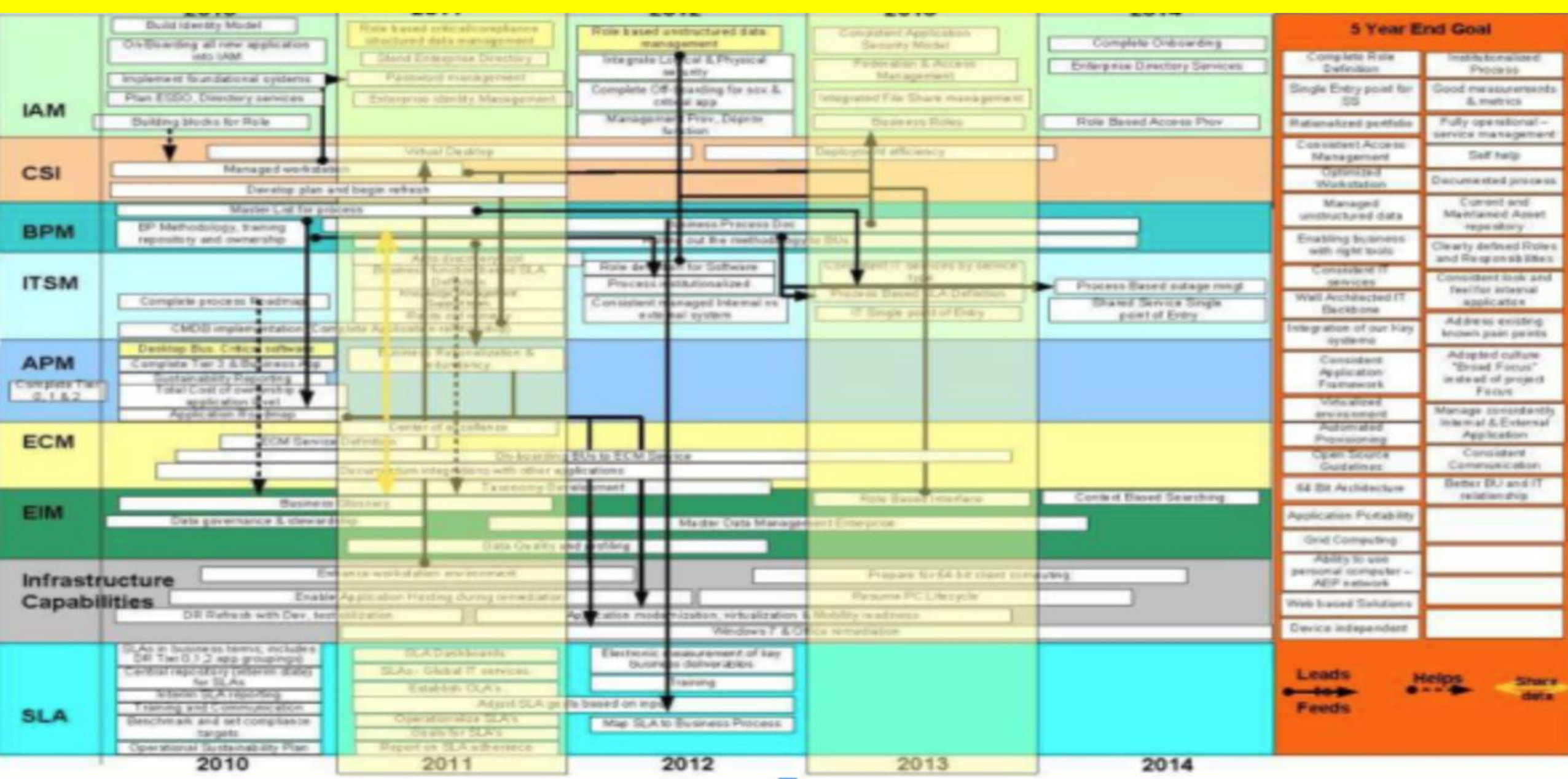
slides

**Memorize keywords,
not phrases...**

**“A picture is worth a
1,000 words...”**

But use it wisely...

Strategic Performance Optimization Framework Q3 Implementation Overview





**Tcheck Yor Fainal
Preesentasion Foor Taaipooos**

A savanna scene with an elephant, a buffalo, a lion, and a leopard. The background is a warm, golden-brown color, suggesting a sunset or sunrise. The animals are in the foreground, and the text is overlaid on the image.

1. Know your audience

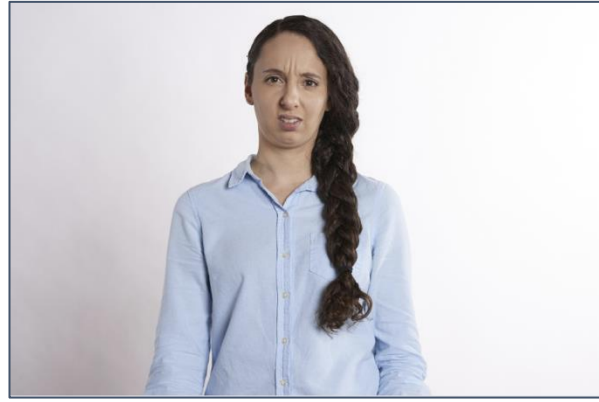
2. Start with a bang

3. Design for simplicity

4. Master your delivery

5. Prepare yourself

Optimize your body language...



Pick your preferred presenter....



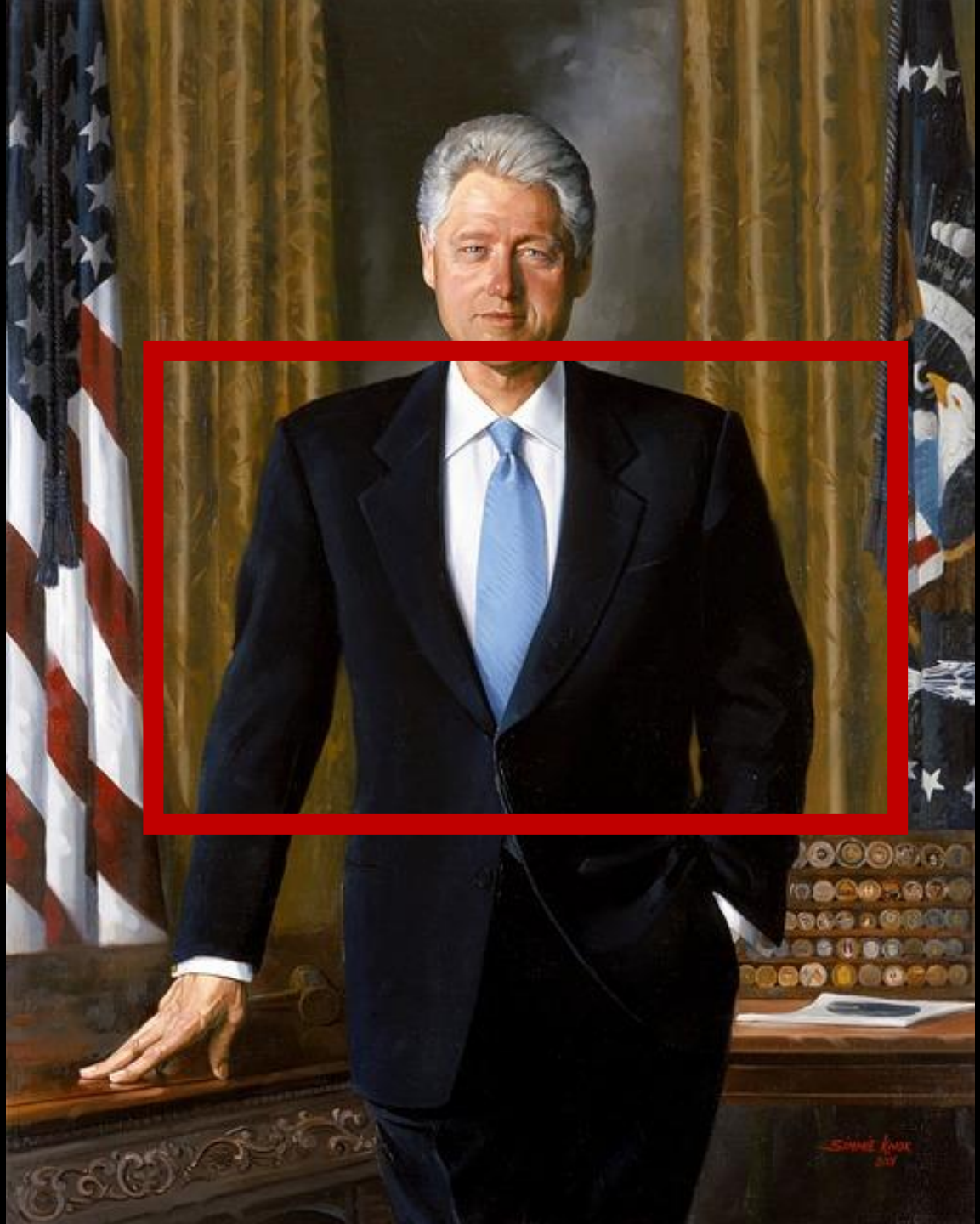
1



2



3



A stage with a wood-paneled wall and floor, illuminated by spotlights. The wall is made of vertical wooden planks, and the floor is made of horizontal wooden planks. There are several spotlights on the wall, casting a warm glow. At the bottom of the image, there are several small, bright lights on the floor, creating a sense of depth and perspective.

The stage is yours...

A white ceramic cup with a red carnation flower on top, set against a blurred background of a book and a lamp. The text "Make use of a Pause" is overlaid on the image.

Make use of a Pause

Optimize your voice...



Why did this work?

A close-up, shallow depth-of-field photograph of the action mechanism of a piano. The focus is on the repetition flippers and hammer flippers, which are black and white components that control the hammer's movement. The strings are visible in the background, and the overall lighting is warm and golden. The text is overlaid in white, bold, sans-serif font.

Low pitch

Authority

Trust

Competence

A savanna scene with an elephant, a buffalo, a lion, and a leopard. The background is a warm, golden-brown color, suggesting a sunset or sunrise. The animals are in the foreground, and the text is overlaid on the image.

1. Know your audience

2. Start with a bang

3. Design for simplicity

4. Master your delivery

5. Prepare yourself



Room



Lights



Sound



Beamer (HDMI)



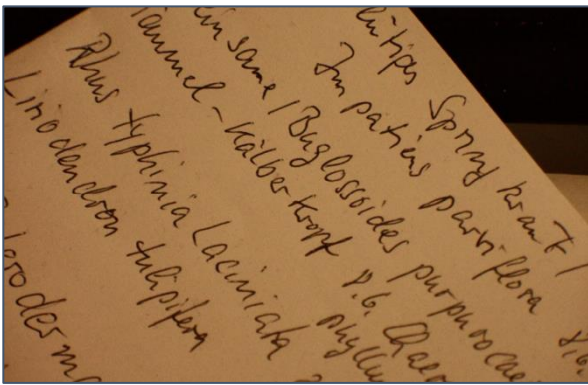
Laptop



Microphone



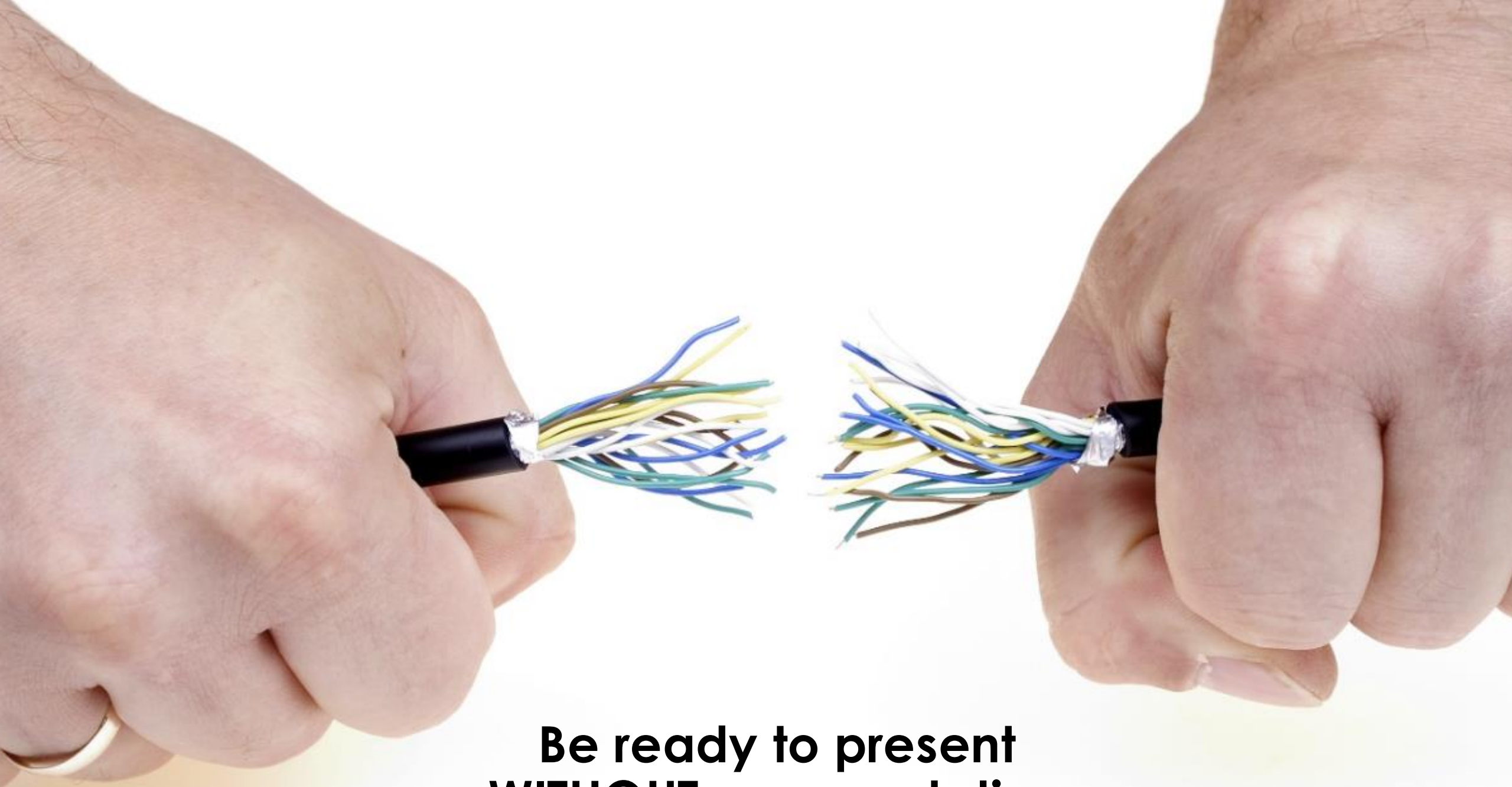
Connections



Cheat Sheets



Backup



**Be ready to present
WITHOUT a presentation**



Rehearse – rehearse - rehearse

Control your breathing...

Breath
in for

4

seconds

Hold your
breath for

7

seconds

Breath
out for

8

seconds

Manage your mindset...

Yes you can!

