

## Enhancing travel and recreation options with iWay

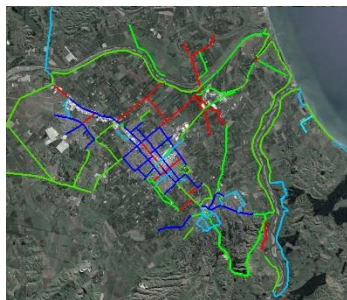
Almost a decade ago, the New Zealand Transport Agency selected Hastings as one of two places (New Plymouth was the other) for the Model Communities Programme: a focused investment in cycling infrastructure, education and encouragement. This initial project grew into iWay, and has been bolstered through additional investment from the national Urban Cycleways Fund.



The Hastings District Council has made a huge investment in time, energy and enthusiasm in the iWay and regional cycle network. It is now one of the major attractions for visitors to Hawke's Bay. Today, local, national and international walkers and bike enthusiasts take year-round advantage of the cycleways and off-road trails.

The current three-pronged approach is on (1) completing the projects funded through the three-year (2016 to 2018) Urban Cycleways Programme; (2) ramping up education & encouragement through the iWay website, MoveIt programme, and school travel plans; and (3) streamlining monitoring & evaluation efforts.

### iWay / UCP network implementation



A **growing network** of cycle lanes (blue) paths (green) and rural shoulders (red)

Chesterhope Bridge clip-on opens Jan 2017 to improve the Napier - Hastings link

Construction underway on school link park paths and Te Mata Peak mountain bike tracks

### MoveIt & school travel plans



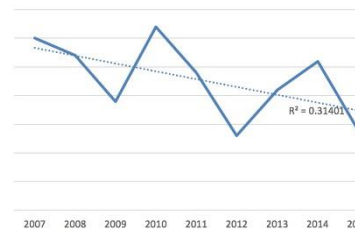
**Travel plans** underway for **7 schools** (out of 51), Hastings District Council & Hawkes Bay District Health Board

Cycling **skills** training for **658 students** in 16/17

Free bike **lights** handed out to **240 commuters**

### iWay Evaluation & Monitoring Plan update

Pedestrian and cyclist reported fatal and serious injuries, 5 year rolling average



The average yearly fatal and serious reported **injuries have dropped** under 10

On average, **1600 people** rode over 24 automatic counters per day in 2015

**207,660 people** rode over the nine permanent pathway counters in 2015