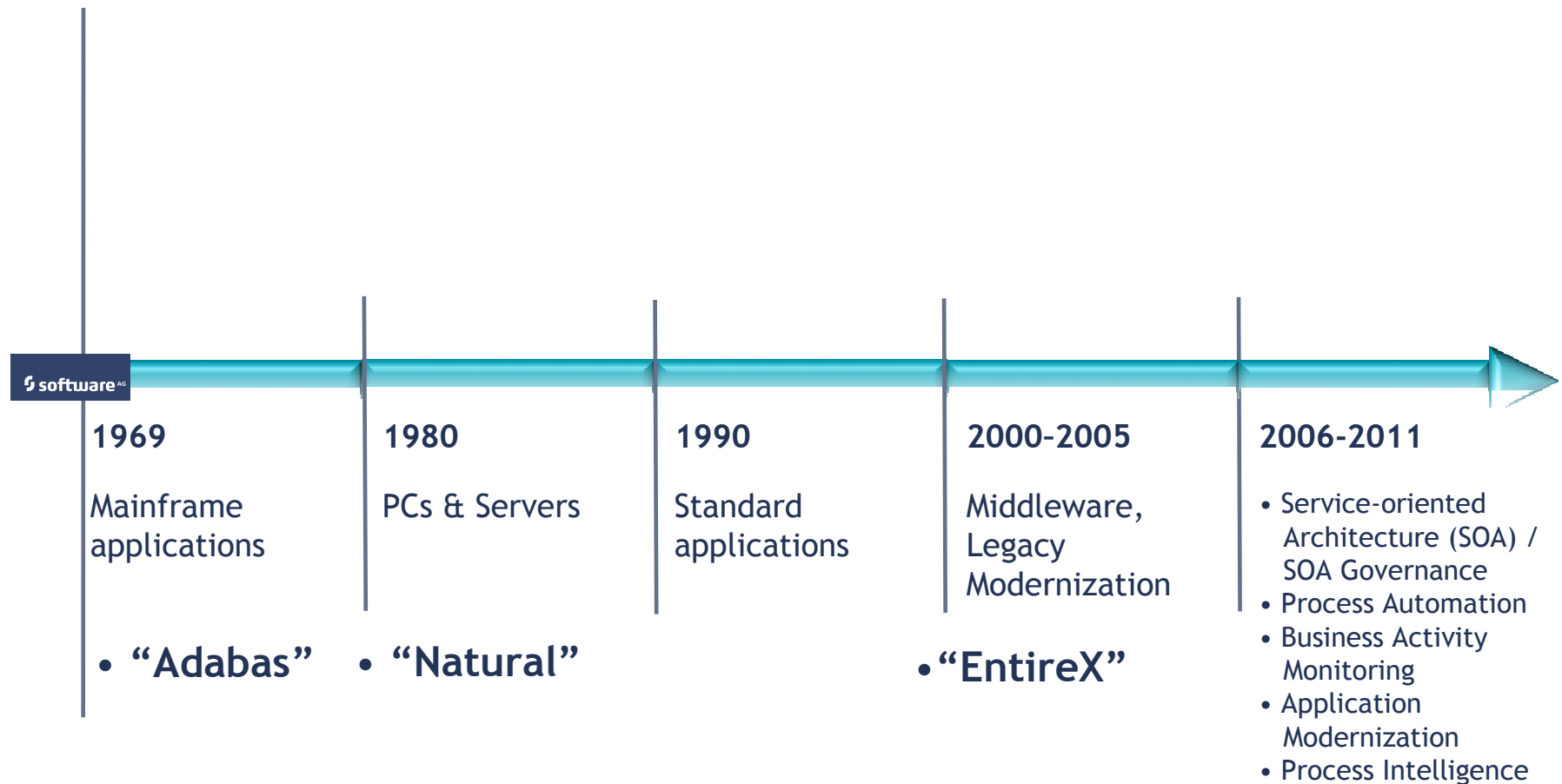


Introducing webMethods JI v4.5.5

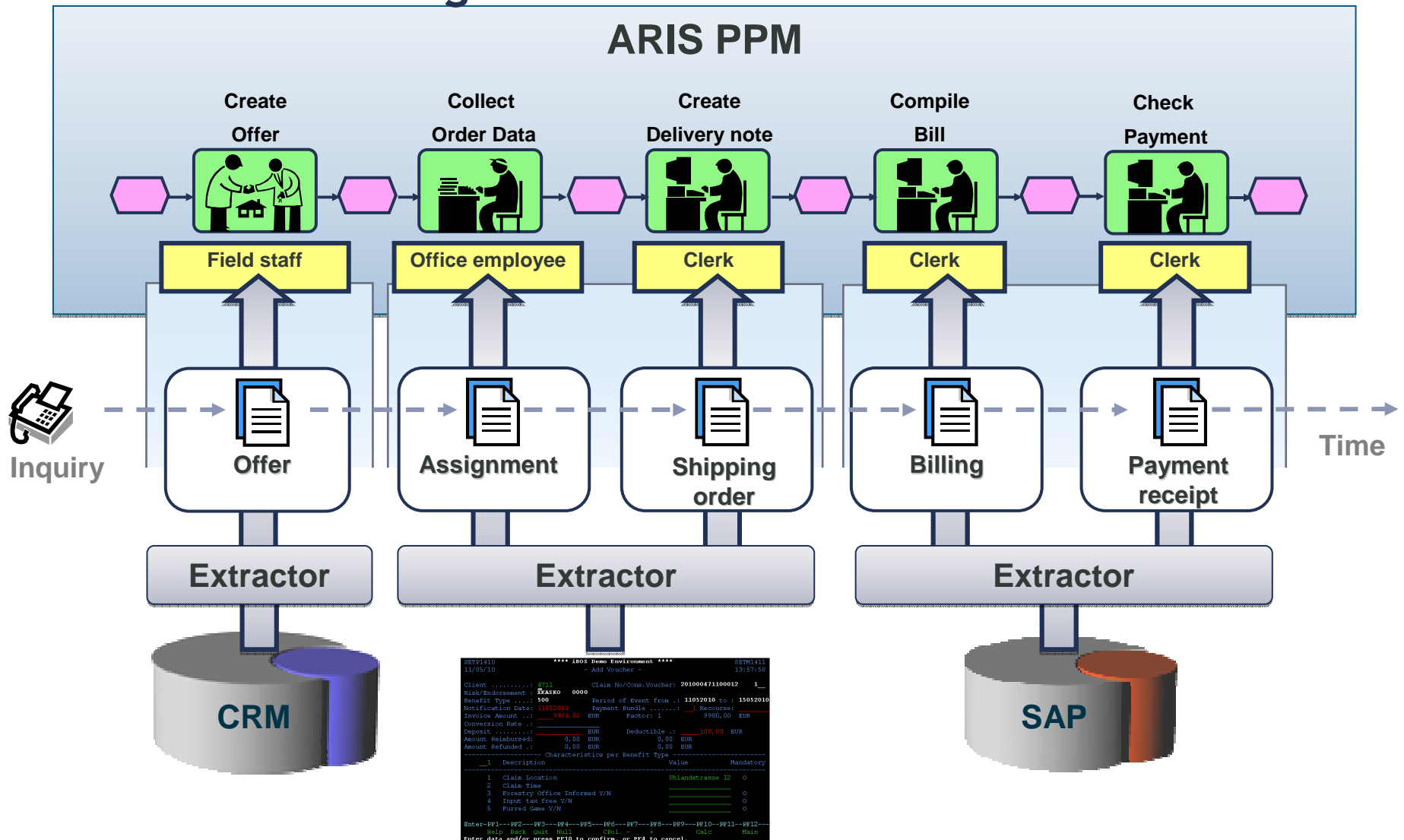
Andreas Goermer

Paul Keusemann

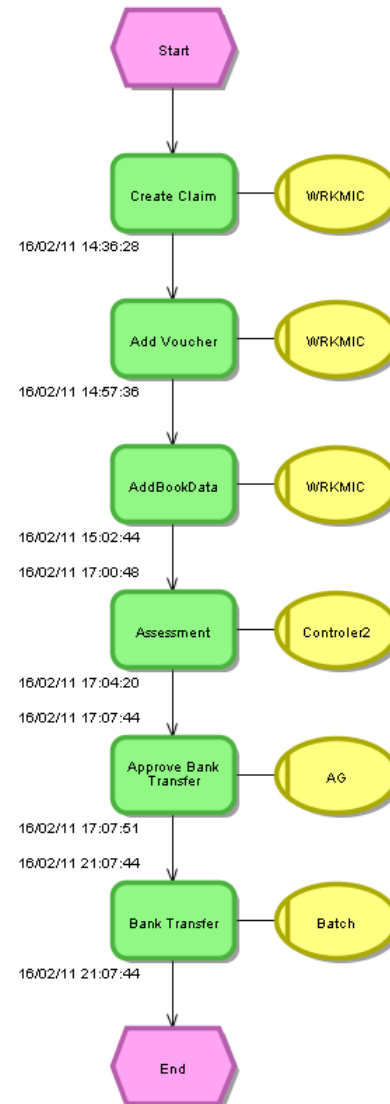
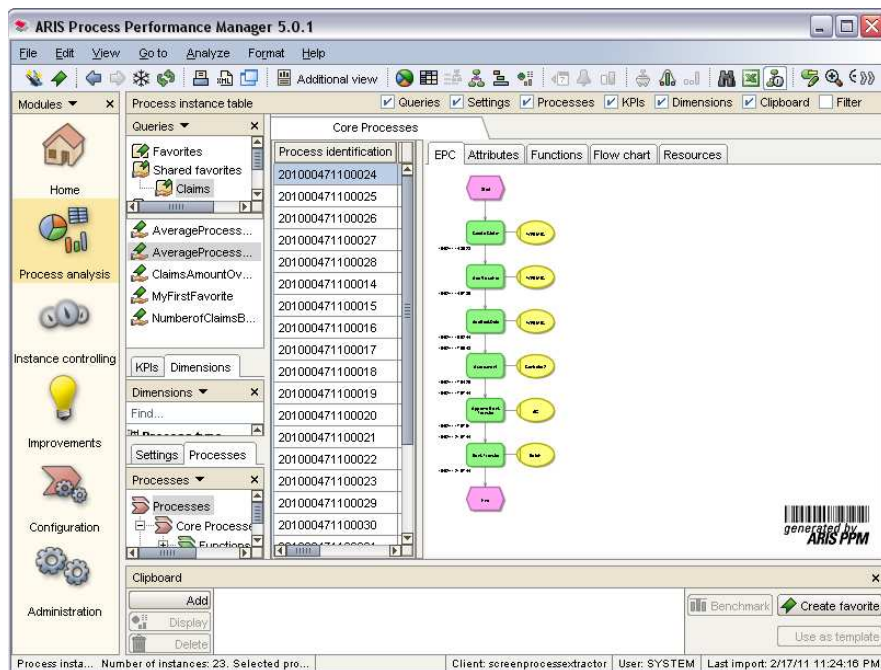
Software AG: Global presence for 42 years



Process Monitoring



As-Is-Process displayed in ARIS PPM

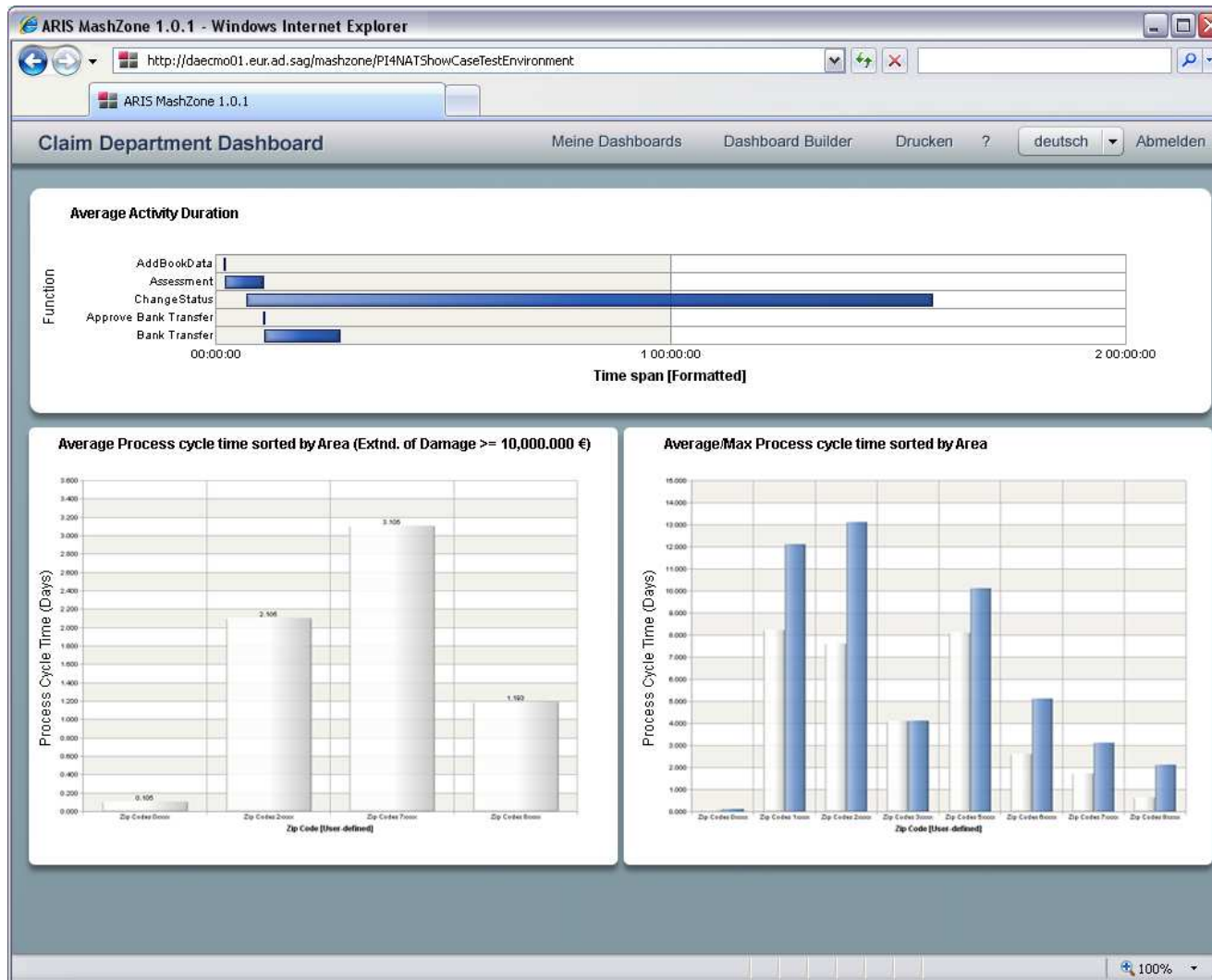


After importing the extracted data to ARIS PPM, the displayed As-Is-Process looks exactly like the designed process.

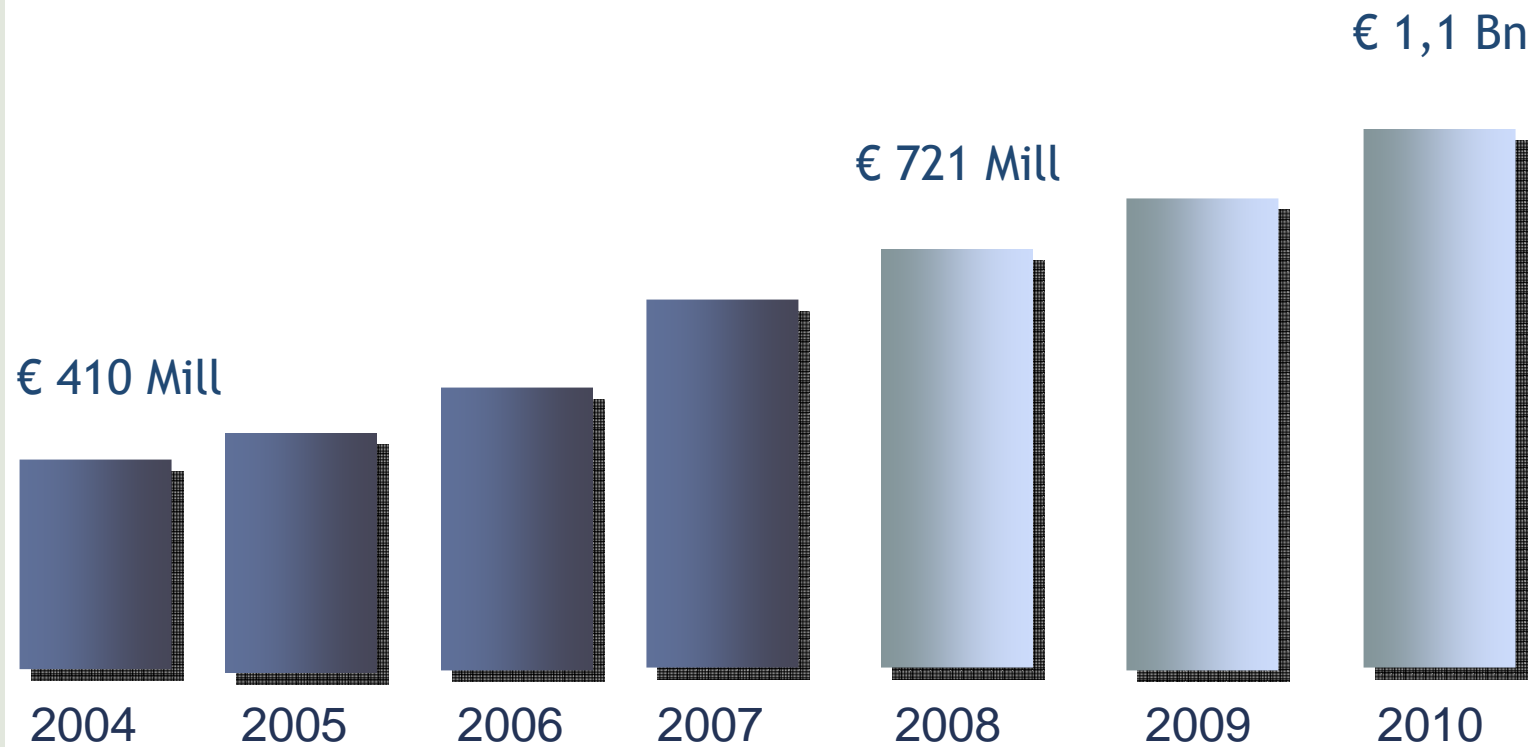
Claims Department Dashboard

The business activity “ChangeStatus” is in an alarming status.

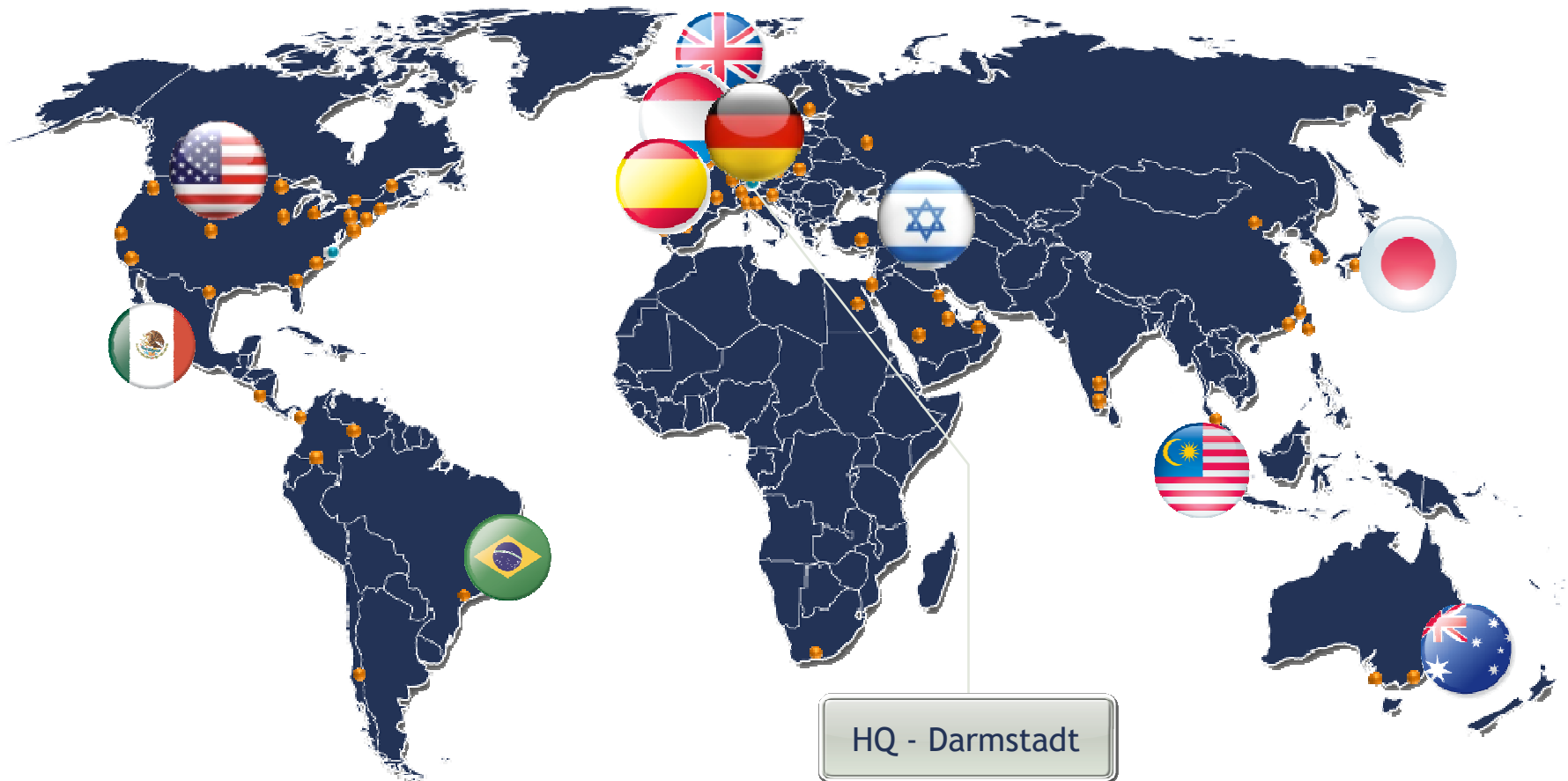
This Dashboard is only a sample, there could be more queries displayed such as how many accidents by game happened per Area.



Software AG continuous growth



Software AG Support Center Presence in 70 Countries



Empower

WE ARE DEDICATED TO YOUR
SUCCESS.

HOW MAY WE HELP YOU TODAY?



Announcing Software AG's
cloud strategy.
Opening more doors
for collaboration.



Having problems logging in? Check out our [FAQ](#)

ESERVICE



How can we help you?
Open new Support Incidents and
update existing ones, interacting
directly with our engineers.

[Go to eService](#)

PRODUCT INFORMATION



View Product Documentation,
Product Life Cycles, Technical
Reports, Learn how to submit
an Enhancement request, and
more!

[View Product Information](#)

PRODUCT FIXES



Fixes are solutions to known
issues. Find product fixes by
product family, product, product
version and operating system.

[View Product Fixes](#)

DOWNLOAD PRODUCTS



Download software products,
including new purchases and
upgrades.

[Download here](#)

Support Self Services: EMPOWER



- Knowledge Center
 - ▶ Hints + Tips
 - ▶ Product Corrections (Fixes)
- eService Support Interaction
- E-Mail Subscriptions
- Products
 - ▶ Information / Documentation
 - ▶ Downloads
 - ▶ Roadmaps

Support Phone Numbers: https://empower.softwareag.com/public_directory.asp

JI and JIS Community Discussion Forum

<http://tech.forums.softwareag.com/>

Software AG Community Discussion Forums - Windows Internet Explorer

http://tech.forums.softwareag.com/

File Edit View Favorites Tools Help

Share Browser WebEx

Software AG Community Discussion Forums

Moderator [Uwe Heichen](#)

<p>Natural Business Services</p> <p>Natural Business Services is a new service oriented development and runtime environment to operate natively on multiple mainframe and open systems platforms. Natural Business Services includes Natural Construct and Construct Spectrum.</p> <p>Moderators Mark Barnard, Karlheinz Kronauer, Hardy Dreesen</p>	16	50	Thu Feb 19, 2009 8:14 pm	Brian Johnson →
<p>Natural for AJAX</p> <p>Natural for AJAX allows to develop Natural Rich Web applications based on AJAX technology. This forum also discusses the conversion of Natural Input/Map based applications to AJAX Web applications.</p> <p>Moderators Christine Zimmermann, Thomas Schwade</p>	94	298	Mon Feb 14, 2011 8:27 am	Christine Zimmermann →
<p>Natural Engineer</p> <p>Natural Engineer is a versatile code analysis and re-structuring tool.</p> <p>Moderators Brian James, Karlheinz Kronauer</p>	62	210	Fri Feb 04, 2011 10:35 am	Brian James →
<p>Other Natural Add-on Products</p> <p>Natural Optimizer, Super Natural, Natural Advanced Facilities, Entire System Server, Review Natural Monitor, Con-nect, Con-form, Prodis, Versis, etc.</p> <p>Moderators Karlheinz Kronauer, Franz Hofer</p>	18	53	Tue Feb 15, 2011 5:30 pm	Juergen Bieber →
Natural Related Products				
Entire Screen Builder, Entire Connection, Natural Connection, Com-plete, Entire System Management				
<p>Terminal Emulation and Screen Scraping</p> <p>Entire Screen Builder, Entire Connection and Natural Connection</p> <p>Moderators Margret Thuenemann-Aepker, Norman Halter</p>	14	47	Mon Feb 28, 2011 10:18 am	Douglas Kelly →
<p>Com-plete</p> <p>Online Transaction Processing (OLTP) and TP-Monitor</p> <p>Moderator Steffen Kuhnert</p>	26	94	Tue Jun 22, 2010 9:22 am	Steffen Kuhnert →
<p>Entire Systems Management</p> <p>This forum was moved to a new category: Entire System Management available here</p> <p>Moderators Frank Hildebrandt, Matthias Schnatbaum</p>	3	9	Tue Mar 04, 2008 3:06 pm	Ulrich Fries →
Mainframe Integration				
Previously Application Modernization. Includes EntireX and Applinx				
<p>EntireX</p> <p>Discussions on the product EntireX, previously named EntireX Communicator</p> <p>Moderators Juergen Lind, Rolf Bahlke, Dietmar Görtner</p>	463	1715	Tue Mar 15, 2011 5:01 pm	Rolf Bahlke →
<p>Applinx</p> <p>Applinx is the leading solution for rapid integration of legacy applications into modern Web environments and architectures.</p> <p>Moderators Andreas Goermer, Assaf Appel</p>	151	612	Thu Mar 24, 2011 11:06 am	cquaj →
<p>JIS, JI</p> <p>webMethods JIS (formerly known as "Jacada Interface Server") and webMethods JI (formerly known as "Jacada Integrator") are well known in the mainframe integration and application modernization market.</p> <p>This forum discusses product related topics.</p> <p>Moderators Andreas Goermer, Lior Yaffe</p>	16	32	Tue Mar 08, 2011 5:41 pm	Martin Dupuis →

Internet 100%

Three years of webMethods JI at Software AG

Releases and Statistics

- Releases 2008 - 2011

- JI 4.5.4 service pack - September 2009
- JI 4.5.5 service pack - January 2011; 4.5.5 [release notes](#)

- Support

- Support tickets 240 / 2 (tickets in total / currently active)



Product Re-branding

- Legal reasons to re-brand
- New product name is **webMethods JI**
- Re-branded documentation is online
<http://documentation.softwareag.com/>



- Logo images and icons now adhere to Software AG standards
- No changes were made to internal entities using the “Jacada” naming

What's new in Version 4.5.5

New Features in JI 4.5.5

- MapMaker command line batch mode
- Updated platform support
- SDFX Export of Maps and Screens



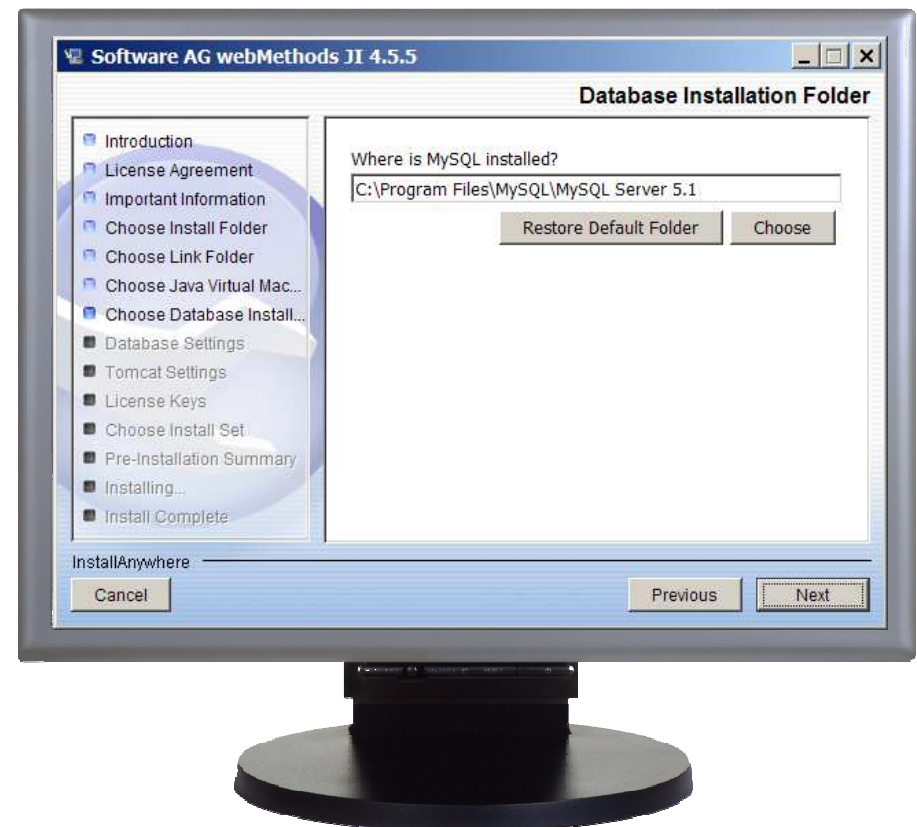
MapMaker Command line batch mode

- Automated Generation of JI Clients, Services, and Service Definitions
- Automated Deployment of JI Java Services
- Automated Deployment, Listing and Undeployment of JI Web Services



Installation changes

- Unbundled MySQL database
- Support MySQL version 5.1



Platform support



New supported Platforms

- HP-UX 11.23 / Itanium
- Windows 7 (32 bit JVM)
- Windows Server 2008 (32 bit JVM)
- Tomcat 6
- MySQL 5.1

What's new in Version 4.5.5

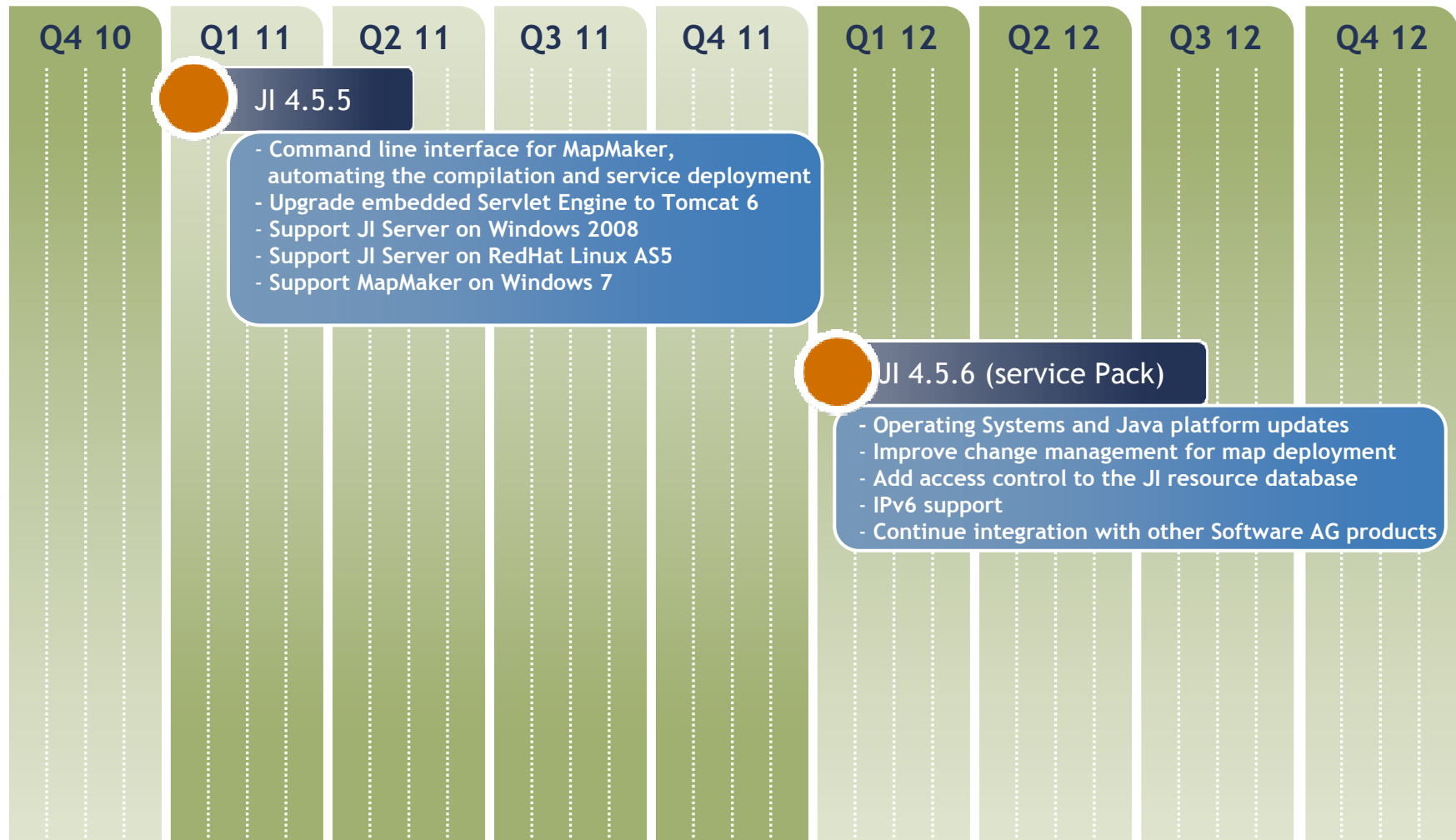
Live demo

Roadmap 2010 - 2012

Software AG provides no commitment to deliver any of the features described herein, and reserves the right to change its product roadmap from time to time in its sole discretion.

Mainframe Integration Roadmap

● = ECR ● = FCS ● = GA



Visit Software AG Community Web site

<http://communities.softwareag.com/ecosystem/communities/public/developer/discussionforums/>