



Idealliance.

**G7 Master  
Facility**

Grayscale | Targeted | Colorspace

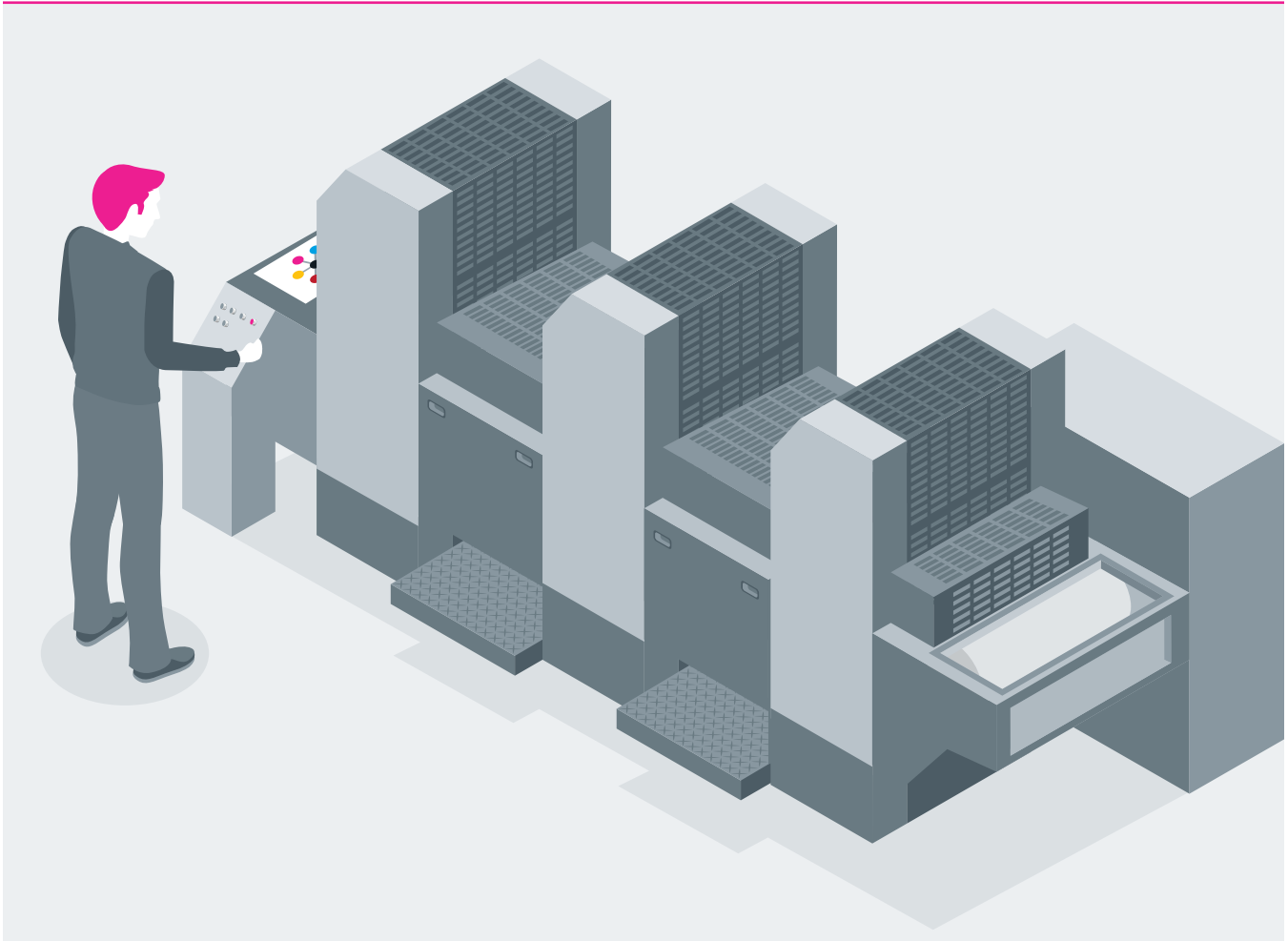
---

**Get validated in the industry's leading  
global print validation program.**

---

[idealliance.org/G7](https://idealliance.org/G7)

---



G7 is Idealliance's industry-leading set of specifications for achieving gray balance and is the driving force for achieving visual similarities across all print processes.

Idealliance G7 Master Facility Qualification is a three-level compliance program that is granted to printing companies and other graphic solutions providers, like creative and premedia provers. G7 Master status indicates the facility has calibrated certain equipment and systems to G7 gray balance and neutral tone curves and is capable of delivering G7 proofs and print products.

**The G7 methodology allows you to:**

- Implement ISO printing standards and additional metrics
- Ensure similar neutral appearance across multiple devices
- Align all process, substrates and inks
- Target gray balance and tonality

**GLOBALLY RECOGNIZED QUALIFICATION BENEFITS**

For business owners, the benefits of being a G7 Master Facility are simple. Your print products are consistent, which helps maintain the integrity of your customers' brand—and turns these customers into repeat customers. Your customer base will increase due to print buyers actively seeking out suppliers who are G7 certified. And lastly, your costs will go down because of reduced paper waste and ink consumption.

**The G7 methodology allows you to:**

- Implement ISO printing standards and additional metrics
- Ensure similar neutral appearance across multiple devices
- Align all process, substrates and inks
- Target gray balance and tonality

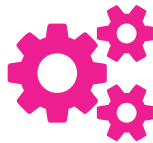
**HOW TO BECOME A G7 MASTER FACILITY**



**Have an Idealliance G7 Certified Expert visit your print facility.**

You can hire a G7 Expert consultant by visiting [Idealliance.org/directory](http://Idealliance.org/directory).

Or have an employee become a G7 Certified Training Expert, visit [Idealliance.org/G7training](http://Idealliance.org/G7training) for more info.



**He or she will conduct and review your calibration data.**



**An online application and print verification will be submitted to an independent 3rd party analysis lab.**



**Once approved, your G7 Master Facility Qualification will be granted.**

**WHAT G7 COMPLIANCE LEVEL IS RIGHT FOR YOUR BUSINESS?**

	Gray Balance	Tonality	Shared Neutral Appearance	Overprints	Entire Colorspace
<b>GRAYSCALE</b> Close match in neutral grays but may exhibit differences in colored areas	●	●	●		
<b>TARGETED</b> Close match in grays and solid colors but may have differences in some colors	●	●	●	●	
<b>COLORSPACE</b> Close match across a G7-based color space	●	●	●	●	●