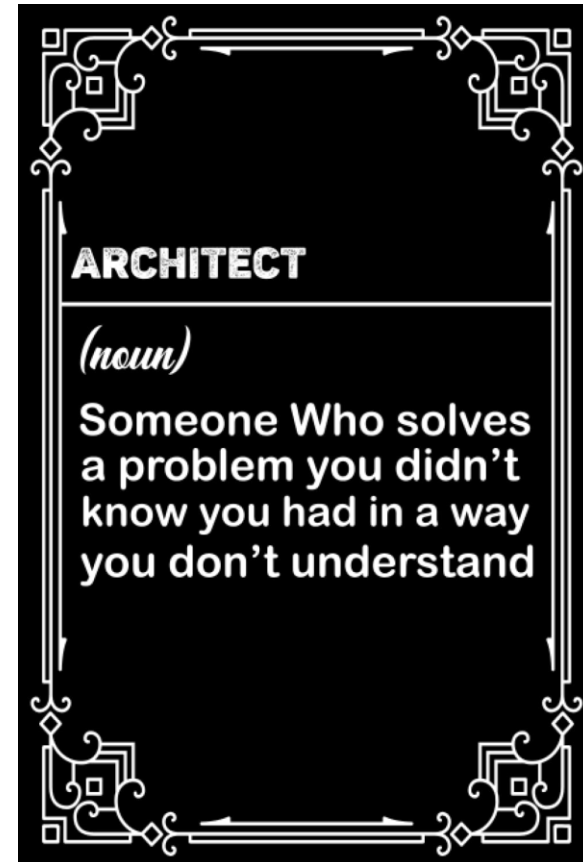


Who Ya Gonna Call? An Architect!



This presentation is to be informative and not to promote specific products, services companies, etc. Illinois ASBO Sponsored Programs are permitted to promote products and services in accordance with the Service Associate Ethics Policy and Code of Conduct.

2024 REGIONAL CONFERENCE

E. Peoria | O'Fallon

Introductions

Dr. Kris Kahler

CSBO

Rochester CUSD 3A

Todd Hannah, AIA

Associate Principal

GreenAssociates, Inc.

Stephen Chassee

Principal

GreenAssociates, Inc.



Role of an Architect

ar·chi·tect

/ˈärkəˌtek(t)/
noun

a person who is qualified to design buildings and to plan and supervise their construction.
"an architect takes into consideration all of the constraints involved in building a structure"

Similar:

designer
planner
builder
building consultant
draftsman



Role of an Architect

How does an Architect support your district?

- Master Planning
- Programming
- Sustainability
- Design
- Construction
- Code Review
- Referendum
- Safety and Security
- 10-Year Health Life Safety Surveys
- Interior Architecture

...and many more



When to Engage an Architect

Early... And Often.



ILLINOIS
Association of School Business Officials



ILLINOIS
Association of School Business Officials

Best Practices: Engaging Architects

- Define clear goals and budget EARLY.
- Involve the Architect in all phases EARLY.
- Collaborate regularly with all stakeholders EARLY.

It is imperative to maximize the support your architect can give you, to engage them early enough in the process for them to have time to effectively provide your district multiple solutions and meet the deadlines you are trying to achieve.



Role of an Architect

How Does an Architect Support Your District?

- Safety and Security
- 10-Year Health Life Safety Surveys
- ADA Compliance
- Site Review
- Utilization Analysis

...for existing facilities



Role of an Architect

How Does an Architect Support Your District?

- Long Range Facility Assessments
- Master Planning
- Code Compliance

...for existing facilities



Role of an Architect

How Does an Architect Support Your District?

- Community Engagement
- Referendum Assistance



Role of an Architect

How Does an Architect Support Your District?

- Determine Construction Delivery Method
- Sustainability
- Programming and Design
- Interior Architecture



Role of an Architect

How Does an Architect Support Your District?

- Construction Administration
- Occupancy
- Final Closeout

...and many more services

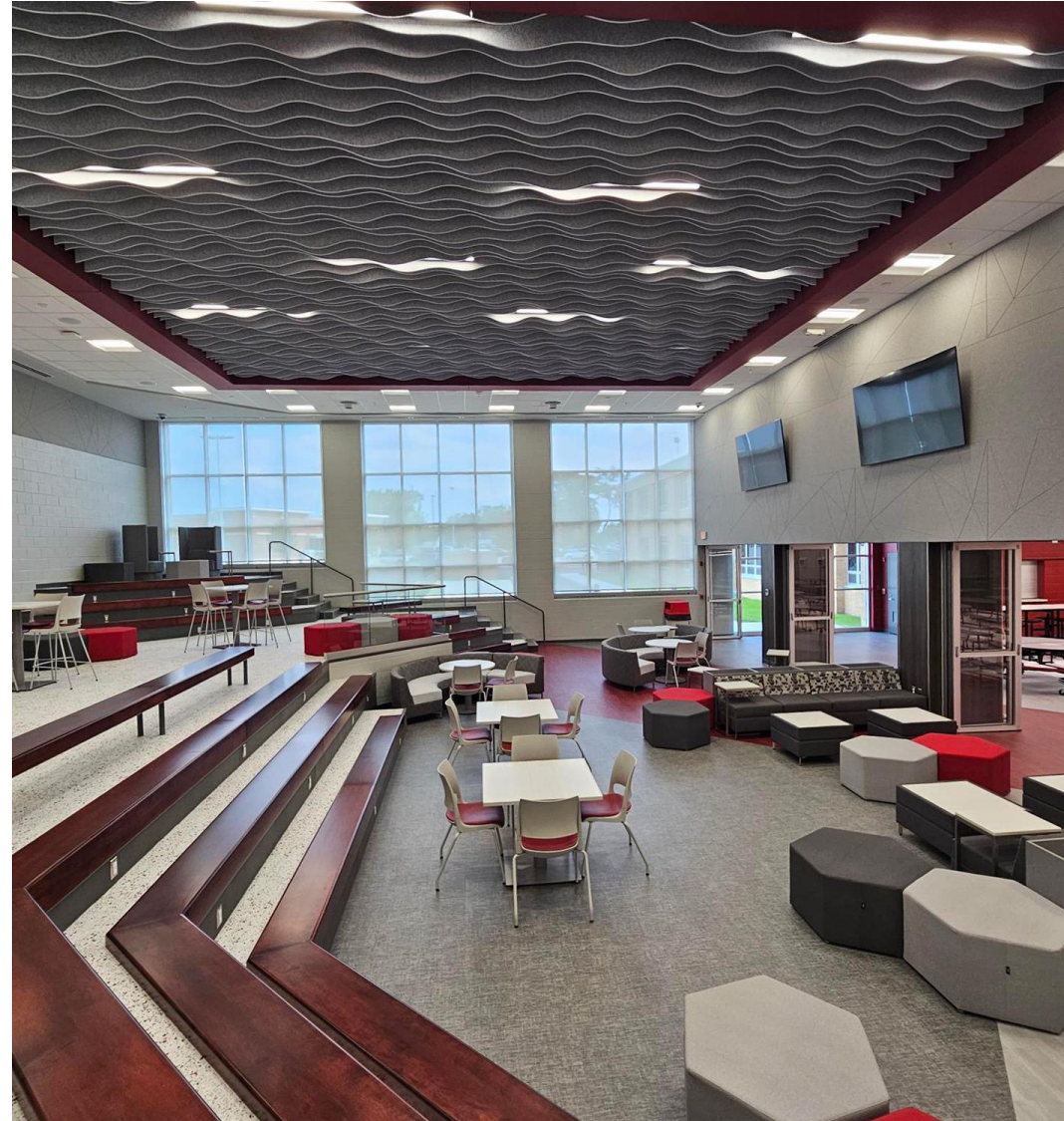


Role of an Architect

How Else Architects Help School Districts

Mitigate Legal and Environmental Risks

- Protect You from Yourself
- Eliminate Throwing Good Money after Bad
- Help Manage Contractor Disputes



Conclusion

Engage Early, Avoid Problems Later:

- By involving architects early, school districts can ensure their projects meet educational goals, stay within budget, and comply with all regulations.

Architects are Key Partners:

- Identifying the current needs of your facilities.
- Designing solutions to fit the district needs.
- Ensuring the success of construction and renovation projects.

Help You Determine the Right Construction Method:

- Depending on the project's scope and the district's expertise, schools can self-perform work, use GCs, performance contractors, or construction management firms.

2024 REGIONAL CONFERENCE

E. Peoria | O'Fallon

Questions and Answers

We thank you for your time!



IASPA
Illinois Association of School
Personnel Administrators



ILLINOIS
Association of School Business Officials

2024 REGIONAL CONFERENCE

E. Peoria | O'Fallon

Presenters

Dr. Kris Kahler

CSBO

Rochester CUSD 3A

Todd Hannah, AIA

Associate Principal

GreenAssociates, Inc.

Stephen Chassee

Principal

GreenAssociates, Inc.

