

District Energy Space 2022



Spotlighting Industry Growth

2022: More than 105 million square feet reported
Over 2.8 billion square feet reported since 1990

District Energy Space 2022

Industry Growth around the World

Dedicated to the growth and utilization of district energy as a means to enhance energy efficiency, provide more sustainable and reliable energy infrastructure, and contribute to improving the global environment.



The publication of ***District Energy Space*** has become an annual tradition for the International District Energy Association since 1990. Compilations beyond North America were initiated in 2004.

This issue features a compilation of data provided by our members including the number of buildings and their area in square feet that have been committed or recommitted to district energy service in North America during calendar year 2022, or previously unreported for recent years.

Each year, IDEA asks its member systems to provide information on buildings that committed or recommitted to district energy service during the previous calendar year. To qualify for consideration in ***District Energy Space***, a renewal must be a contracted building or space that had been scheduled to expire during the calendar year and was renewed under a contract with a duration of 10 years or more. Year-to-year rollover – simple continuation of service to existing buildings is not considered renewal.

For each building, ***District Energy Space*** provides the following information:

- Building name and/or type
- Service provider's name and location
- Building area served in square feet
- Services provided (heating, domestic hot water, laundry, cooling, ice-making, pool warming, etc.)

District Energy Space not only enables IDEA to document the year-to-year growth experienced by our member systems, but also can be a valuable marketing asset for your organization.

District Energy Space 2022 and previous issues are available in PDF format by downloading from IDEA's Web site, <http://www.districtenergy.org/district-energy-space>



About IDEA – Established in 1909, the International District Energy Association (IDEA) serves as a vital communications and information hub for the district energy industry, connecting industry professionals and advancing the technology around the world. With headquarters just outside of Boston, Mass., IDEA comprises over 2,500 district heating and cooling system executives, managers, engineers, consultants and equipment suppliers from 23 countries. IDEA supports the growth and utilization of district energy as a means to conserve fuel, increase energy efficiency and resilience, and reduce emissions.

Summary for 2022

North America

Our members reported that they committed or recommitted **292** customer buildings in North America totaling **53,091,244** square feet (sq ft) of building space to district energy service during 2022 or were previously unreported. That compares with **256** buildings and **55,268,323** sq ft during 2021.

The North America total of **53,091,244** sq ft added in 2022 to IDEA's running total of square footage of **1,026,476,536** sq ft committed to North American district energy systems since 1990, brings the current total for North America reported since 1990 to **1,079,567,779** sq ft.

Beyond North America

IDEA is also pleased to be able to report strong system growth from beyond North America, which we have tracked since 2004. An additional **148** buildings and **52,718,880** sq ft were reported for 2022. That compares with **316** buildings and **66,781,667** sq ft during 2021.

The Beyond North America total of **52,718,880** sq ft added in 2022 to IDEA's running total of square footage of **1,750,054,083** Beyond North America since 2004, brings the Beyond North America total reported since 2004 to **1,802,772,963** sq ft.

Totals: North America and Beyond North America

The combined building area reported added during 2022 in North America and Beyond North America is **105,810,124** sq ft. The total building area added, as reported to *District Energy Space* by our members since our tally began is **105,810,124 + 2,771,530,618 = 2,887,340,742** sq feet.

Stand Up and Be Recognized for 2023

Make plans now to photograph and enter your customer buildings that commit or recommit for your district energy service during calendar year 2023! The deadline for submittal of buildings for 2023 is **Fri., March 29, 2024**.

2022 New Square Footage Reported*

Category	North America	Beyond North America
Commercial-Mixed Use	3,315,190	685,977
Commercial-Office	9,431,646	0
Commercial-Retail/Manufacturing	82,355	144,248
Commercial-Other	40,000	0
Entertainment, Cultural or Sporting Center	1,719,650	83,858
Government	521,340	320,000
Hotel	1,336,179	512,885
Residential	10,097,053	49,732,166
School, Hospital or Institution	23,813,999	1,239,746
Other	2,733,831	0
Square Footage Reported 2022	53,091,244	52,718,880

2022 Total Reported in North America and Beyond North America 105,810,124

* All entries are newly signed, connected or renewed customers during calendar year 2022 (*Renewal* means contractually recommitted to a long-term service agreement of 10 years or greater.)

Commercial-Mixed Use

- **109 S Canopy**
Canopy Park
Lincoln, NE USA
District Energy Corporation
197,531 sq ft - Space heating,
Space cooling
- **115 Canopy St**
Oscar 2.0 / Olsson
Lincoln, NE USA
District Energy Corporation
74,000 sq ft - Space heating,
Space cooling, Domestic hot water
- **1300 Market Street**
Wanamaker
Philadelphia, PA USA
Vicinity
1,367,838 sq ft - Space heating,
Domestic hot water, Humidification
- **1601 2nd Avenue**
Broadacres Building
Seattle, WA USA
CenTrio
114,966 sq ft - Space heating
- **200 Mullins Way**
Campus
Amherst, MA USA
Umass Amherst
13,000,000 sq ft - Space heating,
Space cooling, Domestic hot
water, Kitchen, Refrigeration
- 300 Canopy St
The Railyard
Lincoln, NE USA
District Energy Corporation
53,000 sq ft - Space heating,
Space cooling
- **40 Enman Crescent**
Royalty Centre
London, Ontario Canada
Enwave
250,000 sq ft - Space heating,
Domestic hot water
- **506 Second Ave, Suite 220**
Smith Tower
Seattle, WA USA
CenTrio
6,377 sq ft - Space heating

- **5955-5965 Student Union
Blvd, Vancouver, BC, V6T 1K2**
Vancouver, BC Canada
The University of British Columbia
423,779 sq ft - Domestic hot water,
Kitchen



UBC - Saltwater

- **601 P St**
Oscar 1.0 / Olsson
Lincoln, NE USA
District Energy Corporation
80,000 sq ft - Space heating,
Space cooling, Domestic hot water
- **601 R St**
Canopy Lofts
Lincoln, NE USA
District Energy Corporation
117,000 sq ft - Space heating,
Space cooling
- **701 O St**
Canopy Row/Lumberworks
Lincoln, NE USA
District Energy Corporation
75,000 sq ft - Space heating,
Space cooling
- **96 Monroe Center**
CDV5
Grand Rapids, MI USA
Vicinity
2,500 sq ft - Space heating

Commercial-Office

- **1 N. Dearborn**
Chicago, IL USA
CenTrio
940,300 sq ft - Space cooling
- **10 North Charles Street**
Alertus Technologies
Baltimore, MD USA
Vicinity
36,886 sq ft - Space cooling
- **11 E. Adams**
Chicago, IL USA
CenTrio
160,000 sq ft - Space cooling
- **111 W. Jackson**
Chicago, IL USA
CenTrio
567,500 sq ft - Space cooling
- **115 Canopy St**
Oscar 2.0 / Olsson
Lincoln, NE USA
District Energy Corporation
74,000 sq ft - Space heating,
Space cooling, Domestic hot water
- **1191 2nd Avenue**
Second and Seneca Building
Seattle, WA USA
CenTrio
35,000 sq ft - Space heating
- **1212 Main St.**
Humble Building
Houston, TX USA
CenTrio
196,000 sq ft - Space cooling
- **1400 4th Avenue**
Seattle, WA USA
CenTrio
30,525 sq ft - Space heating
- **1400 5th Avenue**
Logan Building
Seattle, WA USA
CenTrio
128,898 sq ft - Space heating
- **143 Grafton Street**
Bank of Nova Scotia
Charlottetown, PEI Canada
Enwave
20,000 sq ft - Space heating,
Domestic hot water
- **151 Dundas Street**
Market Tower
London, Ontario Canada
Enwave
45,000 sq ft - Space heating,
Domestic hot water
- **1511 3rd Ave**
Melbourne Tower
Seattle, WA USA
CenTrio
130,893 sq ft - Space heating,
Domestic hot water
- **1550 Lamar St.**
1550 on the Green
Houston, TX USA
CenTrio
350,000 sq ft - Space cooling
- **176 Great George Street**
Atlantic Technology Center
Charlottetown, PEI Canada
Enwave
126,000 sq ft - Space heating,
Domestic hot water
- **1888 Century Park East**
Los Angeles, CA USA
CenTrio
513,000 sq ft - Space cooling
- **191 Great George Street**
Jean Canfield Building
Charlottetown, PEI Canada
Enwave
190,000 sq ft - Space heating,
Domestic hot water
- **199 Bay Street**
Commerce Court West
Toronto, Ontario Canada
Enwave
1,324,737 sq ft - Space heating,
Space cooling, Domestic hot water
- **2 E Erie**
Chicago, IL USA
CenTrio
87,500 sq ft - Space cooling
- **20 Winthrop**
Columbia Realty Trust
Boston, MA USA
Vicinity
111,490 sq ft - Space heating

Commercial—Office, cont.

- **200 East Pratt Street**
Baltimore Center Associates
Limited Partnership
Baltimore, MD USA
Vicinity
260,000 sq ft - Space cooling
- **200 W. Jackson**
Chicago, IL USA
CenTrio
487,400 sq ft - Space cooling
- **201 Robert S Kerr**
Arvest Bank Building
Oklahoma City, OK USA
Vicinity
300,000 sq ft - Space heating,
Domestic hot water
- **208 S. LaSalle**
Chicago, IL USA
CenTrio
350,000 sq ft - Space cooling
- **2200 6th Avenue**
Denny Building
Seattle, WA USA
CenTrio
169,000 sq ft - Space heating,
Domestic hot water
- **231 S. LaSalle**
Chicago, IL USA
CenTrio
1,061,600 sq ft - Space cooling
- **25 South Charles Street**
Grander Capital LLC
Baltimore, MD USA
Vicinity
359,000 sq ft - Space heating,
Space cooling
- **267 Dundas Street**
J. Allen Taylor
London, Ontario Canada
Enwave
20,000 sq ft - Space heating,
Domestic hot water
- **303 E. Wacker**
Chicago, IL USA
CenTrio
944,000 sq ft - Space cooling
- **355 S. Grand**
Wells Fargo Center
Los Angeles, CA USA
CenTrio
2,555,000 sq ft - Space cooling

- **40 Temperance Street**
Bay Adelaide Centre - North
Toronto, Ontario Canada
Enwave
980,000 sq ft - Space heating,
Space cooling, Domestic hot water

- **41 Sherburne Ave**
Education Minnesota
Saint Paul, MN USA
DE St Paul
48,630 sq ft - Space heating,
Domestic hot water



Education Minnesota

- **420 University Avenue**
The Farm Centre
Charlottetown, PEI Canada
Enwave
35,000 sq ft - Space heating,
Domestic hot water

- **421 Wabasha Street North**
Grace Building
Saint Paul, MN USA
DE St Paul
45,000 sq ft - Space heating,
Domestic hot water



Grace Building

- **445 S. Figueroa**
Union Bank Plaza
Los Angeles, CA USA
CenTrio
702,000 sq ft - Space cooling

- **55 Market Place**
WH Campbell
Baltimore, MD USA
Vicinity
55,000 sq ft - Space cooling

- **55 Summer Street**
Phase 3
Boston, MA USA
Vicinity
125,000 sq ft - Space heating

- **60 State Street**
Boston, MA USA
Vicinity
987,600 sq ft - Space heating,
Domestic hot water

- **600 P St**
Hudl Hq
Lincoln, NE USA
District Energy Corporation
130,000 sq ft - Space heating
Space cooling

- **600 University St, Suite 2820**
Union Square Building
Seattle, WA USA
CenTrio
1,165,441 sq ft - Space heating,
Domestic hot water

- **601 P St**
Oscar 1.0 / Olsson
Lincoln, NE USA
District Energy Corporation
80,000 sq ft - Space heating,
Space cooling, Domestic hot water

- **6340 No. 3 Rd**
Keltic
Richmond, BC Canada
Lulu Island
633,058 sq ft - Space heating,
Space cooling, Domestic hot water



Keltic

- **805 1st Avenue**
Colman Properties - 805 First Ave
Seattle, WA USA
CenTrio
101,058 sq ft - Space heating

- **909 Walnut**
Kansas City, MO USA
Vicinity
351,000 sq ft - Space heating,
Space cooling

- **One Boston Place**
Boston, MA USA
Vicinity
837,940 sq ft - Space heating,
Domestic hot water

- **83 Columbia Street**
Daily Journal of Commerce
Seattle, WA USA
CenTrio
40,000 sq ft - Space heating

Commercial-Retail / Manufacturing

- **1250 Alaskan Way**
Copperworks Distilling Company
Seattle, WA USA
CenTrio
16,500 sq ft - Space heating,
Process

- **135 Great George Street**
Merle Norman Cosmetics
Charlottetown, PEI Canada
Enwave
10,000 sq ft - Space heating,
Domestic hot water

- **449 University Avenue**
University Plaza
Charlottetown, PEI Canada
Enwave
30,000 sq ft - Space heating,
Domestic hot water

- **6340 No. 3 Rd**
Keltic
Richmond, BC Canada
Lulu Island
633,058 sq ft - Space heating,
Space cooling, Domestic hot water



Keltic

Entertainment, Cultural or Sporting Center

- **18 W. Monroe**
Chicago, IL USA
Centrio
125,000 sq ft - Space cooling
- **200 Mullins Way**
Campus
Amherst, MA USA
Umass Amherst
13,000,000 sq ft - Space heating,
Space cooling, Domestic hot
water, Kitchen, Refrigeration
- **2001 Robert Dedman Dr,
Austin, TX 78712**
Moody Center
Austin, Texas USA
UT Austin
530,000 sq ft - Space heating,
Space cooling, Domestic hot
water, Kitchen, Refrigeration



UT Austin MCA

- **300 York Street**
RBC Place
London, Ontario Canada
Enwave
70,000 sq ft - Space heating,
Space cooling, Domestic hot water
- **355 Wellington Street**
Goodlife Fitness
London, Ontario Canada
Enwave
55,000 sq ft - Space heating,
Domestic hot water
- **400 Pinnacle Arena Dr**
Pinnacle Bank Arena
Lincoln, NE USA
District Energy Corporation
470,400 sq ft - Space heating,
Space cooling

- **537 E 20th St., Austin, TX
78712**
Basketball and Rowing Training
Facility
Austin, Texas USA
UT Austin
75,650 sq ft - Space heating,
Space cooling, Domestic hot
water, Kitchen, Refrigeration



UT Austin BBR

- **704 Terry Avenue**
Frye Art Museum
Seattle, WA USA
Centrio
47,000 sq ft - Space heating
- **99 Dundas Street**
Budweiser Gardens
London, Ontario Canada
Enwave
20,000 sq ft - Space heating,
Space cooling, Domestic hot water

Government

- **14 W 10th**
KC City Public Library
Kansas City, MO USA
Vicinity
175,920 sq ft - Space cooling
- **1445 K St**
Capitol Building
Lincoln, NE USA
District Energy Corporation
402,000 sq ft - Space heating
- **1526 K St**
State Admin Office
Lincoln, NE USA
District Energy Corporation
90,000 sq ft - Space heating
- **2005 5th Avenue**
Griffin Building
Seattle, WA USA
Centrio
26,436 sq ft - Space heating

- **219 S. Dearborn**
Chicago, IL USA
Centrio
2,724,000 sq ft - Space cooling
- **300 Monroe NW**
Kent Country - Waste-To-Energy
Facility
Grand Rapids, MI USA
Vicinity
105,300 sq ft - Space heating
- **301 Centennial Mall**
State Office Building
Lincoln, NE USA
District Energy Corporation
518,000 sq ft - Space heating
- **440 S 8th**
K St
Lincoln, NE USA
District Energy Corporation
115,000 sq ft - Space heating,
Space cooling
- **4th and Frisco**
COX Business Center of Tulsa
Tulsa, OK USA
Vicinity
225,000 sq ft - Space heating,
Space cooling
- **555 S 10th**
County City Buildg
Lincoln, NE USA
District Energy Corporation
140,000 sq ft - Space heating,
Space cooling
- **575 S 10th**
Hall of Justice
Lincoln, NE USA
District Energy Corporation
220,000 sq ft - Space heating,
Space cooling
- **605 S 10th**
Lincoln, NE USA
District Energy Corporation
115,000 sq ft - Space heating,
Space cooling
- **633 S 9th**
Court House Plaza
Lincoln, NE USA
District Energy Corporation
22,000 sq ft - Space heating,
Space cooling

- **825 J St**
Lincoln, NE USA
Lulu Island
22,000 sq ft - Space heating,
Space cooling
- **9445 Rokeby Rd**
LES Operations Center
Lincoln, NE USA
District Energy Corporation
405,806 sq ft - Space heating,
Space cooling, Domestic hot water

Hotel

- **11 Kellogg Boulevard East**
Intercontinental Hotel
Saint Paul, MN USA
DE St Paul
448,000 sq ft - Space heating,
Space cooling, Domestic hot water



Intercontinental Hotel

- **1635 Race**
Sheraton
Philadelphia, PA USA
Vicinity
795,319 sq ft - Space heating
- **2000 4th Avenue**
Hotel Andra
Seattle, WA USA
Centrio
92,860 sq ft - Space heating,
Domestic hot water
- **208 S. LaSalle**
Chicago, IL USA
Centrio
350,000 sq ft - Space cooling
- **600 Q St**
Hyatt Hotel
Lincoln, NE USA
District Energy Corporation
135,000 sq ft - Space heating,
Space cooling

Residential

■ 107 Cherry Street

Lowman Building
Seattle, WA USA
Centrio
43,554 sq ft - Space heating

■ 109 S Canopy

Canopy Park
Lincoln, NE USA
District Energy Corporation
197,531 sq ft - Space heating,
Space cooling

■ 1220 Boren Avenue

HF Marlborough House LLC
Seattle, WA USA
Centrio
58,410 sq ft - Space heating

■ 13 Haviland Street

Renaissance Place
Charlottetown, PEI Canada
Enwave
30,000 sq ft - Space heating,
Domestic hot water

■ 1315 Gravier St

New Orleans, LA USA
Centrio
143,473 sq ft - Space cooling

■ 1414 S Penn Square

Residences at the RITZ
Philadelphia, PA USA
Vicinity
617,665 sq ft - Space heating

■ 15 Arlington Street

The Newbury Boston
Boston, MA USA
Vicinity
500,000 sq ft - Space heating,
Domestic hot water, Kitchen

■ 1519 3rd Avenue

Fischer Studio Bldg c/o Azose
Commercial Properties
Seattle, WA USA
Centrio
51,880 sq ft - Space heating

■ 1835 Arch

Lofts at 1835 Arch
Philadelphia, PA USA
Vicinity
25,4000 sq ft - Space heating,
Domestic hot water

■ 1901 Walnut

Rittenhouse Plaza
Philadelphia, PA USA
Vicinity
279,109 sq ft - Space heating

■ 200 Mullins Way

Campus
Amherst, MA USA
Umass Amherst
13,000,000 sq ft - Space heating,
Space cooling, Domestic hot
water, Kitchen, Refrigeration

■ 260 5th Street East

Lofts at Farmers Market
Saint Paul, MN USA
DE St Paul
60,000 sq ft - Space heating,
Space cooling, Domestic hot
water



Lofts at Farmers Market

■ 2720 3rd Avenue

The Lofts Condominium
Seattle, WA USA
Centrio
33,769 sq ft - Space heating,
Domestic hot water

■ 300 Cathedral

Chasen Companies
Baltimore, MD USA
Vicinity
85,140 sq ft - Space heating

■ 3438 Sawmill Crescent

MODE
Vancouver, BC CANADA
River District Energy LP
247,590 sq ft - Space heating,
Domestic hot water



River District Energy MODE

■ 3699 Sexsmith Rd

Fiorella
Richmond, BC Canada
Lulu Island
159,866 sq ft - Space heating,
Space cooling, Domestic hot water



Fiorella

■ 4 Prince Street

Hillsborough Condominiums
Charlottetown, PEI Canada
Enwave
35,000 sq ft - Space heating,
Domestic hot water

■ 433-437 Wellington St W

The WELL - Building B
Toronto, Ontario Canada
Enwave
157,852 sq ft - Space heating,
Space cooling, Domestic hot water

■ 436 Front St W

The WELL - Building F
Toronto, Ontario Canada
Enwave
419,894 sq ft - Space heating,
Space cooling, Domestic hot water

■ 523 Jackson Street

Produce Exchange Lofts
Saint Paul, MN USA
DE St Paul
53,000 sq ft - Space heating,
Space cooling, Domestic hot water



Produce Exchange Lofts

■ 540 N. State

Chicago, IL USA
Centrio
478,100 sq ft - Space cooling

■ 57 Spadina Avenue

The Taylor
Toronto, Ontario Canada
Enwave
319,449 sq ft - Space heating,
Space cooling, Domestic hot water

■ 5955-5965 Student Union Blvd, Vancouver, BC, V6T 1K2

Vancouver, BC Canada
The University of British Columbia
423,779 sq ft - Domestic hot
water, Kitchen



UBC - Saltwater

■ 600 N. Dearborn

Chicago, IL USA
Centrio
293,000 sq ft - Space cooling

■ 600 N. Kingsbury

Chicago, IL USA
Centrio
289,900 sq ft - Space cooling

■ 601 R St

Canopy Lofts
Lincoln, NE USA
District Energy Corporation
117,000 sq ft - Space heating,
Space cooling

■ 6340 No. 3 Rd

Keltic
Richmond, BC Canada
Lulu Island
633,058 sq ft - Space heating,
Space cooling, Domestic hot water



Keltic

Residential, cont.

- **66 9th Street East**
City Walk Condominiums
Saint Paul, MN USA
DE St Paul
190,000 sq ft - Space heating,
Space cooling, Domestic hot water



City Walk Condominiums

- **6811/6833/6855 Pearson Way**
ASPAC Lot 17
Richmond, BC Canada
Lulu Island
584,254 sq ft - Space heating,
Domestic hot water



ASPAC Lot 17

- **701 O St**
Canopy Row/Lumberworks
Lincoln, NE USA
District Energy Corporation
75,000 sq ft - Space heating,
Space cooling

- **8690 Jack Uppal Street**
KEEL
Vancouver, BC CANADA
River District Energy LP
94,161 sq ft - Space heating,
Domestic hot water



River District Energy, KEEL

- **909 Walnut**
Kansas City, MO USA
Vicinity
351,000 sq ft - Space heating,
Space cooling

- **9211 McKim Way**
Camden Walk Phase 2
Richmond, BC Canada
Lulu Island
55,905 sq ft - Space heating,
Space cooling, Domestic hot water



Camden Walk

School, Hospital, Institution

- **10 North Greene Street**
Veteran Affairs Medical Center
Baltimore, MD USA
Vicinity
60,000 sq ft - Space heating

- **108 E Dean Keeton St, Austin, TX 78712**
Sarah M. & Charles E. Seay
Building (Addition)
Austin, Texas USA
UT Austin
78,876 sq ft - Space heating,
Space cooling, Domestic hot water



UT Austin SEA Addition

- **1201 Rollins St**
NextGen
Columbia, MO USA
University of Missouri
21,686 sq ft - Space heating,
Space cooling, Domestic hot
water, Humidification, Process,
Kitchen

- **1860 East Mall, Vancouver, BC, V6T 1Z1**
Arts Student Centre
Vancouver, BC Canada
The University of British Columbia
11,400 sq ft - Space heating,
Domestic hot water



UBC - Arts Student Centre

- **200 Mullins Way**
Campus
Amherst, MA USA
Umass Amherst
13,000,000 sq ft - Space heating,
Space cooling, Domestic hot
water, Kitchen, Refrigeration

- **210 E 24th St, Austin, TX 78712**
Gary L Thomas Energy Engineering
Building
Austin, Texas USA
UT Austin
187,516 sq ft - Space heating,
Space cooling, Domestic hot
water, Process



UT Austin GLT

- **223 Kent Street**
Central Christian Church
Charlottetown, PEI Canada
Enwave
20,000 sq ft - Space heating,
Domestic hot water

- **2356 Main Mall, Vancouver, BC, V6T 1Z4**
MacLeod Building
Vancouver, BC Canada
The University of British Columbia
81,203 sq ft - Space heating,
Domestic hot water



UBC - MacLeod

- **3141 Chestnut**
DREXEL UNIVERSITY
Philadelphia, PA USA
Vicinity
4,562,722 sq ft - Space heating,
Domestic hot water, Process

- **609 8th Avenue**
Trinity Parish Church
Seattle, WA USA
CentTrio
31,300 sq ft - Space heating

- **6340 No. 3 Rd**
Keltic
Richmond, BC Canada
Lulu Island
633,058 sq ft - Space heating,
Space cooling, Domestic hot water



Keltic

School, Hospital, Institution, cont.

- **6899 Pearson Way**
ASPAC Lot 13
Richmond, BC Canada
Lulu Island
8148 sq ft - Space heating,
Domestic hot water



ASPAC Lot 13

- **703 8th Avenue**
Bishop Lewis House
Seattle, WA USA
Centrio
15,120 sq ft - Space heating
- **722 East Union Street**
Knights of Columbus
Seattle, WA USA
Centrio
187,999 sq ft - Space heating
- **Louisiana State University**
LSU Main Campus
Baton Rouge, LA USA
Centrio
8,800,000 sq ft - Space heating,
Space cooling

- **University of Rochester
River Campus**
University Health Service Building
Rochester, NY USA
University of Rochester
6,900 sq ft - Space heating, Space
cooling, Domestic hot water



University of Rochester Energy -
University Health Service Building

- **Saunders Hall**
Charlottesville, VA USA
UVA
34,608 sq ft - Space heating,
Space cooling
- **Darden Library**
Charlottesville, VA USA
UVA
37,075 sq ft - Space heating,
Space cooling
- **Darden Faculty**
Charlottesville, VA USA
UVA
43,081 sq ft - Space heating,
Space cooling
- **Smith Hall**
Charlottesville, VA USA
UVA
43,530 sq ft - Space heating,
Space cooling
- **Stone Hall (NRAO)**
Charlottesville, VA USA
UVA
61,273 sq ft - Space heating,
Space cooling

- **Abbott Center**
Charlottesville, VA USA
UVA
65,891 sq ft - Space heating,
Space cooling

- **Darden Classroom**
Charlottesville, VA USA
UVA
79,053 sq ft - Space heating,
Space cooling

- **UVA Orthopedic Center**
Charlottesville, VA USA
UVA
206,954 sq ft - Space heating,
Space cooling

- **Student Health and Wellness
Center**
Charlottesville, VA USA
UVA
245,911 sq ft - Space heating,
Space cooling

Other

- **1 Winthrop Square**
Nan Fung Life Sciences
Boston, MA USA
Vicinity
115,000 sq ft - Space heating,
Domestic hot water

- **109 Brookline**
IQHQ 109 Brookline
Boston, MA USA
Vicinity
285,000 sq ft - Space heating,
Domestic hot water

- **201 West Baltimore Street**
OakViewGroup
Baltimore, MD USA
Vicinity
473,145 sq ft - Space cooling

- **284 A Street.**
Boston, MA USA
Vicinity
275,686 sq ft - Space heating,
Domestic hot water

- **290 Binney Street**
Boston Properties - Parent
Cambridge, MA USA
Vicinity
400,000 sq ft - Space heating,
Domestic hot water

- **3801 West O St**
County Adult Detention Facility
Lincoln, NE USA
District Energy Corporation
290,000 sq ft - Space heating,
Space cooling, Domestic hot water

- **470 Atlantic Avenue**
Independence Wharf
Boston, MA USA
Vicinity
150,000 sq ft - Space heating,
Domestic hot water

- **645 Beacon St**
IQHQ
Boston, MA USA
Vicinity
285,000 sq ft - Space heating,
Domestic hot water

- **725 Beacon Street**
IQHQ Fenway Center
Boston, MA USA
Vicinity
750,000 sq ft - Space heating,
Domestic hot water

- **815 Pioneers Blvd**
Nebraska State Penitentiary
Lincoln, NE USA
District Energy Corporation
450,619 sq ft - Space heating,
Space cooling, Domestic hot water

Commercial-Mixed Use

- **Abu Dhabi**
Commercial Buildings
Abu Dhabi, United Arab Emirates
Tabreed
16,100 sq ft - Space cooling
- **Abu Dhabi**
Commercial Buildings
Abu Dhabi, United Arab Emirates
Tabreed
46,000 sq ft - Space cooling
- **Abu Dhabi**
Commercial Buildings
Abu Dhabi, United Arab Emirates
Tabreed
87,400 sq ft - Space cooling
- **Abu Dhabi**
Commercial Buildings
Abu Dhabi, United Arab Emirates
Tabreed
109,000 sq ft - Space cooling
- **Abu Dhabi**
Commercial Buildings
Abu Dhabi, United Arab Emirates
Tabreed
342,677 sq ft - Space cooling
- **Dubai**
The Galleria Investments LLC
(City Tower)
Dubai, United Arab Emirates
Tabreed
84,800 sq ft - Space cooling

Commercial-Retail / Manufacturing

- **Cairo**
Mall of Kattameya
Cairo, Egypt
Tabreed
97500 sq ft - Space cooling
- **Dubai Investment Park, Plot # 597-796**
Perfect Tools Moulds Factory (L.L.C) (Branch)
Dubai, UAE
Emicool
3,046 sq ft - Space cooling



Perfect Tools Moulds Factory

■ Dubai Motor City, Plot # 674-215

Yoto International FZCO
Dubai, UAE
Emicool
43,701 sq ft - Space cooling



Yoto International FZCO

Entertainment, Cultural or Sporting Center

- **Raha Beach, Abu Dhabi**
UAE UAM MUAY THAI AND KICKBOXING FEDERATION
Abu Dhabi, United Arab Emirates
Tabreed
18,607 sq ft - Space cooling
- **Saadiyat Island, Abu Dhabi**
Centre of Curiosity
Abu Dhabi, United Arab Emirates
Tabreed
33,557 sq ft - Space cooling



Center of Curiosity

- **Saadiyat Island, Abu Dhabi**
Natural History Museum
Abu Dhabi, United Arab Emirates
Tabreed
23,000 sq ft - Space cooling



Natural History Museum

Government

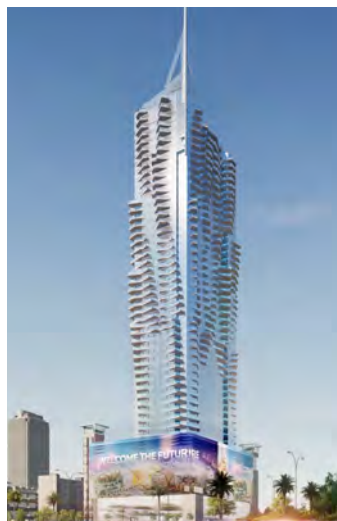
- **Riyadh**
King Salman Park Foundation
Riyadh, Saudi Arabia
Tabreed
320,000 sq ft - Space cooling



KSPF

Hotel

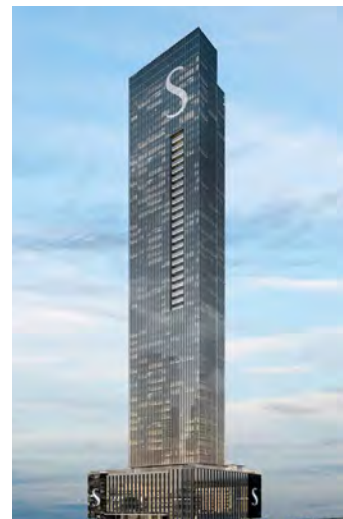
- **Muscat**
Rotana Hotel
Muscat, Oman
Tabreed
12,190 sq ft - Space cooling
- **Sheikh Zayed Road**
Fairmont Dubai Skyline
Dubai, UAE
Empower
500,695 sq ft - Space cooling



Fairmont Dubai Skyline

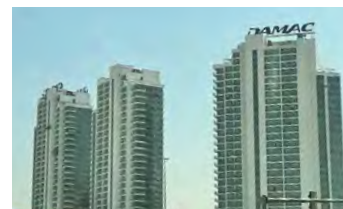
Residential

- **Abu Dhabi**
Webridge Properties LLC
Abu Dhabi, United Arab Emirates
Tabreed
34,440 sq ft - Space cooling
- **Al Sufouh**
The S Tower
Dubai, UAE
Empower
625,297 sq ft - Space cooling



The S Tower

- **Business Bay**
Additional Buildings at Business Bay
Dubai, UAE
Empower
1,859,846 sq ft - Space cooling
- **Damac Hills, Plot # 676-5407 Tower C**
Damac Crescent Properties L.L.C
Dubai, UAE
Emicool
265,851 sq ft - Space cooling



Damac Crescent Properties L.L.C

- **Downtown, Dubai**
Emaar
Dubai, United Arab Emirates
Tabreed
25,276 sq ft - Space cooling

Residential, cont.

- **Dubai**
Triple Range Investment LTD
Dubai, United Arab Emirates
Tabreed
9,778 sq ft - Space cooling

- **Dubai Investment Park, Plot # 597-1172**
Saifee Trading Co.
Dubai, UAE
Emicool
35,808 sq ft - Space cooling



Saifee Trading Co.

- **Dubai Investment Park, Plot # 597-343**
V K L Middle East Building Materials Trading L.L.C
Dubai, UAE
Emicool
41,441 sq ft - Space cooling



V K L Middle East Building Materials Trading L.L.C

- **Dubai Investment Park, Plot # 597-796 A**
Perfect Tools Moulds Factory (L.L.C) (Branch)
Dubai, UAE
Emicool
15,661 sq ft - Space cooling



Perfect Tools Moulds Factory

- **Dubai Investment Park, Plot # 597-866**
International Foundation Group (L.L.C)
Dubai, UAE
Emicool
73,733 sq ft - Space cooling



International Foundation Group

- **Dubai Investment Park, Plot # 597-884**
Alokozay Industries FZE
Dubai, UAE
Emicool
39,999 sq ft - Space cooling



Alokozay Industries FZE

- **Dubai Investment Park, Plot # 598-1080-2F**
Ajman Bank / P.S.C
Dubai, UAE
Emicool
117,360 sq ft - Space cooling



Ajman Bank P.S.C_2F

- **Dubai Investment Park, Plot # 598-1080-2G**
Ajman Bank / P.S.C
Dubai, UAE
Emicool
117,360 sq ft - Space cooling



Ajman Bank P.S.C_2G

- **Dubai Maritime City**
Dubai Maritime City
Dubai, UAE
Empower
31,733,749 sq ft - Space cooling



Dubai Maritime City

- **Dubai Production City**
Additional Buildings at Dubai Production City
Dubai, UAE
Empower
988,393 sq ft - Space cooling

- **Dubailand**
Additional Buildings at DLRC
Dubai, UAE
Empower
515,261 sq ft - Space cooling

- **Jumeirah Village Circle & Jumeirah Village Triangle**
Additional Buildings at JVC & JVT
Dubai, UAE
Empower
1,955,026 sq ft - Space cooling

- **Jumierah Lakes Towers (JLT)**
Additional Buildings at JLT
Dubai, UAE
Empower
1,228,347 sq ft - Space cooling

- **Jumierah Lakes Towers (JLT)**
Seven Tides
Dubai, UAE
Empower
2,143,173 sq ft - Space cooling



Seven Tides

- **Masdar City, Abu Dhabi**
Elige Real Estate
Abu Dhabi, United Arab Emirates
Tabreed
14,760 sq ft - Space cooling

- **Masdar City, Abu Dhabi**
Reportage Prime Properties LLC
Abu Dhabi, United Arab Emirates
Tabreed
17,630 sq ft - Space cooling

- **Masdar City, Abu Dhabi**
Reportage Hospitality Real Estate Limited
Abu Dhabi, United Arab Emirates
Tabreed
20,500 sq ft - Space cooling

Residential, cont.

- **Mohammed Bin Rashid Al Maktoum City**
Sobha Hartland
Dubai, UAE
Empower
5,898,853 sq ft - Space cooling



Sobha Hartland - Sobha Creek Vistas



Sobha Hartland - Waves Grande

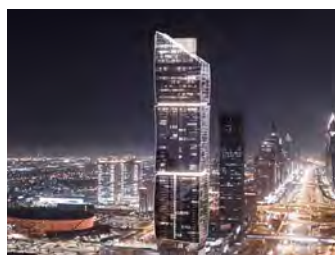


Sobha Hartland - Sobha One Park Avenue

- **Muscat**
Juman 2
Muscat, Oman
Tabreed
18,573 sq ft - Space cooling
- **Raha Beach, Abu Dhabi**
Raha Beach Residential tower
Abu Dhabi, United Arab Emirates
Tabreed
5,740 sq ft - Space cooling
- **Raha Beach, Abu Dhabi**
Raha Beach Residential tower
Abu Dhabi, United Arab Emirates
Tabreed
5,740 sq ft - Space cooling

- **Raha Beach, Abu Dhabi**
Raha Beach Residential tower
Abu Dhabi, United Arab Emirates
Tabreed
5,740 sq ft - Space cooling
- **Raha Beach, Abu Dhabi**
Raha Beach Residential tower
Abu Dhabi, United Arab Emirates
Tabreed
6,765 sq ft - Space cooling
- **Raha Beach, Abu Dhabi**
Raha Beach Residential tower
Abu Dhabi, United Arab Emirates
Tabreed
6,765 sq ft - Space cooling
- **Raha Beach, Abu Dhabi**
Raha Beach Residential tower
Abu Dhabi, United Arab Emirates
Tabreed
7,011 sq ft - Space cooling
- **Raha Beach, Abu Dhabi**
Raha Beach Residential tower
Abu Dhabi, United Arab Emirates
Tabreed
7,072 sq ft - Space cooling
- **Raha Beach, Abu Dhabi**
Raha Beach Residential tower
Abu Dhabi, United Arab Emirates
Tabreed
7,134 sq ft - Space cooling
- **Raha Beach, Abu Dhabi**
Raha Beach Residential tower
Abu Dhabi, United Arab Emirates
Tabreed
7,564 sq ft - Space cooling
- **Raha Beach, Abu Dhabi**
Raha Beach Residential tower
Abu Dhabi, United Arab Emirates
Tabreed
7,831 sq ft - Space cooling
- **Raha Beach, Abu Dhabi**
Raha Beach Residential tower
Abu Dhabi, United Arab Emirates
Tabreed
8,090 sq ft - Space cooling
- **Raha Beach, Abu Dhabi**
Raha Beach Residential tower
Abu Dhabi, United Arab Emirates
Tabreed
8,200 sq ft - Space cooling
- **Raha Beach, Abu Dhabi**
Raha Beach Residential tower
Abu Dhabi, United Arab Emirates
Tabreed
8,200 sq ft - Space cooling

- **Raha Beach, Abu Dhabi**
Raha Beach Residential tower
Abu Dhabi, United Arab Emirates
Tabreed
8,200 sq ft - Space cooling
- **Raha Beach, Abu Dhabi**
Raha Beach Residential tower
Abu Dhabi, United Arab Emirates
Tabreed
9,020 sq ft - Space cooling
- **Raha Beach, Abu Dhabi**
Raha Beach Residential tower
Abu Dhabi, United Arab Emirates
Tabreed
10,250 sq ft - Space cooling
- **Sheikh Zayed Road**
AIRE Dubai
Dubai, UAE
Empower
723,326 sq ft - Space cooling



AIRE Dubai

- **Umm Suqeim 3/ Jumeirah**
Madinat Jumeirah Living - Phase 1
Dubai, UAE
Empower
225,050 sq ft - Space cooling



Madinat Jumeirah Living Phase 1

- **Umm Suqeim 3/ Jumeirah**
Madinat Jumeirah Living - Phase 3
Dubai, UAE
Empower
420,000 sq ft - Space cooling



Madinat Jumeirah Living Phase 3

- **Umm Suqeim 3/ Jumeirah**
Madinat Jumeirah Living - Phase 2
Dubai, UAE
Empower
434,000 sq ft - Space cooling



Madinat Jumeirah Living Phase 2

- **Yas Island, Abu Dhabi**
TwoFour54
Abu Dhabi, United Arab Emirates
Tabreed
14,350 sq ft - Space cooling

School, Hospital, Institution

- **Badr City, Cairo**
Capital Med
Cairo, Egypt
Tabreed
448,000 sq ft - Space cooling



Capital Med

- **Dubai Healthcare City**
Additional Buildings at DHCC 1&2
Dubai, UAE
Empower
791,746 sq ft - Space cooling

Plan to submit your calendar 2023 growth data.

Make plans now to photograph and enter your customer buildings that commit or recommit for your district energy service during 2023!

The deadline for submittal of system growth data for calendar year 2023 is Fri., March 29, 2024.

Continuing our tradition, during the IDEA 115th Annual Conference in Orlando, Florida, June 17-20 2024, IDEA will congratulate and present awards to those systems reporting the largest growth for calendar 2023 for both North America and Beyond North America. We look forward to seeing you there!

To enter data for customers newly committed, recommitted or connected customers during calendar 2023, please download and complete the appropriate **North America** or **Beyond North America** Microsoft® Excel® submission form:

- [Submission Form – North America](#)
- [Submission Form – Beyond North America](#)

Please use the form as provided and fill in all appropriate cells to facilitate our compilation of the data.

Submit the final document to Sarah Crawford-Theurkauf at sarah.idea@districtenergy.org. We encourage you to send as many building photographs as possible, and label them clearly with your company name and identifying title such as:

“My Organization Name-Smith Office Building”.

For more information and to access past issues of *District Energy Space*, visit:
<https://www.districtenergy.org/resources/publications/district-energy-space>



1800 West Park Drive
Suite 350
Westborough MA 01581, USA
Tel: +1 508-366-9339
Fax +1 508-366-0019
www.districtenergy.org

Copyright ©2023 International District Energy Association. ALL RIGHTS RESERVED. This publication contains proprietary content of International District Energy Association (IDEA) which is protected by copyright, trademark and other intellectual property rights. No part of this publication or any "Information" (as defined below) contained herein may be reproduced (by photocopying or otherwise), transmitted, stored (in a database, retrieval system, or otherwise), or otherwise used through any means without the express prior written permission of IDEA. "Information" means any and all information, data, specific products, services, processes, procedures, designs, techniques, technical data, editorial material, advice, instructions, opinions or any other content appearing or referenced in this publication. IDEA has prepared this publication for informational purposes only. IDEA has exercised reasonable care in producing the Information contained in this publication. The appearance of any Information in this publication does not constitute endorsement, warranty or guaranty by IDEA of any product, service, process, procedure, design or the like. IDEA does not make any representation or warranties about the suitability or accuracy of the Information in this publication or that the Information in this publication is error-free. All Information presented in this work is provided "as is" without warranty of any kind. IDEA disclaims all warranties and conditions of any kind, express or implied, including all implied warranties and conditions of merchantability, fitness for a particular purpose, title and non-infringement. The Information contained in this publication may be superseded, may contain errors, and/or may include inaccuracies. IDEA shall not be liable for any special, indirect, incidental, consequential or any damages whatsoever resulting from inconvenience, or loss of use, resources, or profits, whether in an action of contract, negligence or other tortious action, arising out of or in connection with the use or performance of any of the Information available in this publication even if IDEA has been advised of the possibility of such damages or losses. IDEA invites comments, criticisms and suggestions regarding the subject matter in this publication, including notice of errors or omissions.