



## SPECTRUM

Newsletter of the Puget Sound Chapter CSI - December 2019 - VOL 72

In this Issue:

- Event Spotlight
- CSI Store Announcement
- Upcoming Events
- 2019-2020 Season Calendar
- Auction Item Request
- Sponsorship Opportunities
- President's Message
- BOD Meeting Minutes
- Technically...
- Chapter Leaders
- Affiliate Events

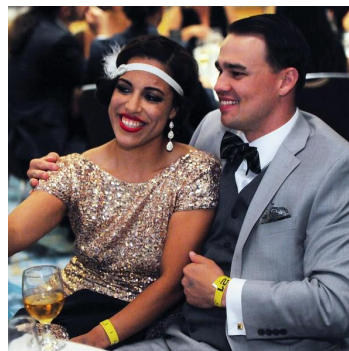
## Event Spotlights

### The 1920s-themed "SpecEasy" PSCCSI's Holiday Party and Auction : 21+

Still Liquor is a restored 1920's automotive garage and your new favorite watering hole. Proceeds from our annual auction will benefit Northwest Harvest, Washington State's statewide hunger relief agency.

### What could you take home from the auction?

What could possibly sound better than John Lee Hooker's rendition of *"One Bourbon, One Scotch, One Beer..."*? How about enjoying cheesecake in each of those flavors, custom-made by Beth Stroshane, Managing Partner of Applied Building Information (*also* former Puget Sound Chapter CSI President, *and* everyone's favorite cheesecake maker)?



**THURSDAY, DECEMBER 12, 2019**

5:00-8:00 PM

Still Liquor | Capitol Hill  
1524 Minor Avenue  
Seattle, WA 98101

**Register Here!**

- Enjoy fun and fundraising with a silent auction and raffle.
- Win prizes in CSI games (don't worry, "untangle the tree lights" is not one of them).
- Help your fellow Washingtonians by donating to Northwest Harvest. Let's reach our goal of \$2,000!

**Donate Directly to Northwest Harvest** - If you would



like to donate directly to Northwest Harvest, please visit the [Northwest Harvest donation site](#). In the comments field, please enter Construction Specifications Institute and let Dick Owen [dickowen43@aol.com](mailto:dickowen43@aol.com) know you have donated so we can count this towards our goal!

*Event Sponsorships Available through Registration*

---

## **From Texas to Seattle: Focusing on Material Durability**

### **Joint Meeting of PSCSI and SeaBEC**

Focus on durability to avoid material failures in 2020 and beyond!

Start the New Year off right in this joint PSC CSI-SeaBEC (Seattle Building Enclosure Council) meeting, where we're bringing in **nationally recognized expert David H. Nicastro**, P.E., F. ASTM, of Building Diagnostics, Inc. from Austin, Texas.

Mr. Nicastro will discuss durability of Water-Resistive Barriers as a Factor of Litigation, including factors that affect **initial performance and durability over time of air barriers**, and **why certain industry standard testing methods are the least predictive of durability**.

Mr. Nicastro is a professional engineer specializing in durability and failure causation theory and is the founder of Building Diagnostics and Engineering Diagnostics (an *Inc. 500* firm). He's also a founder of The Durability Lab, a testing center housed at the University of Texas at Austin, and is the past chairman on the ASTM Committee C24 on Building Seals and Sealants. He has published over 50 articles and books on durability and failure of building materials.



**THURSDAY, JANUARY 16, 2019**

5:00 PM - 7:00 PM

**OAC Services**

2200 1st Ave S #200

Seattle, WA 98134

[\*\*Register Here!\*\*](#)

---

## **Become A Sponsor: From Texas to Seattle:**

### ***Focusing on Material Durability - Joint Meeting with SeaBEC***

Be one of just two sponsors at this joint event (one through PSC CSI and one through SeaBEC). **Double the attendees, double the exposure!** Sponsorship includes recognition in **marketing materials**, a five minute **Quick Pitch**, and space to **display** your materials. *Sponsorship information available on Registration page.*



## WELCOME TO YOUR STORE



**Did you see the news?** [The CSI Store](#) is officially open for business!

They may not have any Black Friday deals, but they are open 24/7. Start thinking through your holiday gifts and thank yous.

**Even better news?** You can have your materials branded to your chapter or region! Note at the time of purchase and a representative will call you prior to production.

**What do you think you'll buy first?**

## Upcoming Events



[January 16, 2020](#)  
[Joint Meeting of](#)  
[PSCCSI and SeaBec](#)



January 22, 2020:  
New Member Event  
[More info coming soon!](#)



January 28, 2020  
CDT Prep Class 1 of 3  
[More info coming soon!](#)



February 13, 2020  
Joint Meeting of  
PSCCSI and Healthy  
Materials  
[More info coming soon!](#)



February 25, 2020  
CDT Prep Class 2 of 3  
[More info coming soon!](#)

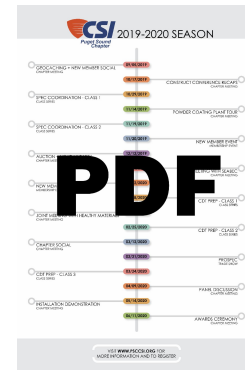


March 12, 2020  
PSCCSI Chapter Social  
[More info coming soon!](#)

## 2019-2020 Season Calendar

Our 2019-2020 season calendar is now available as a printable graphic. [Download it here](#) and don't miss an event!

Take me to the [PSC CSI Website](#) for more information.



[Download.pdf](#)

## Auction Item Request

Every year our chapter holds a fundraising event in support of [Northwest Harvest](#), a hunger relief agency in Washington State.

Help us make this season a happy one for our community by donating items to be auctioned off at our December "SpecEasy" auction, for which 100% of proceeds will be donated to Northwest Harvest.

Email [office@psccsi.org](mailto:office@psccsi.org) today to donate!

## Sponsorship Opportunities

[Sponsorship packages](#) are available for all our [events](#). Please click on registration links for events above for sponsorship information.

## President's Message

### The Season of Giving

by Melissa Falcetti, PSC CSI President

December is so busy for most of us – holiday parties, get-togethers with family and friends, shopping for gifts, decorating... and deadlines that need get out the door before the year ends. It's easy to get wrapped up in everything on our task lists and forget to step back. This is the season for giving. It's the season to focus on family and community.

In today's world, many of us are more disconnected from our community than ever. We don't always know our neighbors or see what's happening in our neighborhoods,

towns or cities. We're busier than ever and community involvement is often one of the first engagements to drop off our lists. But engaging doesn't have to be difficult or time consuming.

Some of the most prevalent issues facing our community right now are homelessness, housing costs, and food insecurity. This season and throughout 2020, please consider getting involved to help address these issues:

- Swing a hammer for a day with [Habitat for Humanity](#) to help create more affordable housing.
- Pass out food and toiletries to the homeless with the [Search & Rescue](#) program through Seattle's Union Gospel Mission.
- Connect with Mike Fletcher of EPRO Inc. and join your CSI colleagues in a tiny-house build for the soon-to-be-housed through the [BLOCK Project](#).
- Ask someone for a monetary donation to your favorite charity in lieu of a gift.

Want an easy place to start? Please join us for the "[SpecEasy](#)," our annual holiday party and auction, spearheaded this season by Erika Anderson of Anderson Specialties and Dick Owen, retired and formerly of Lease Crutcher Lewis. You'll have a wonderful time catching up with old friends and colleagues at this Roaring 20s-themed party in a 1920s automotive garage turned bar with specialty themed drinks, décor and food. Have fun bidding on one-of-a-kind items created and donated by your industry colleagues. Most importantly, the net proceeds of this event will be sent to [Northwest Harvest](#), a 501(c)3 statewide hunger relief agency that serves over two million meals monthly.

Join us to help make this season a more joyful one for all our neighbors.  
Happy Holidays everyone!

## Board of Directors Meeting Minutes

[SEPTEMBER 2019: PSC CSI Board Meeting Minutes](#)

### Technically...

*John Aldridge of LMN on the Origin of Words*

**hone** - a tool consisting of several fine abrasive slips held in a machine head, rotated and reciprocated to impart a smooth finish to cylinder bores, etc. *Before 950; Middle English (noun); Old English **hān** stone, rock; cognate with Old Norse **hein** hone; akin to cone (because cone comes from a base word for "to sharpen")*

One of the 3 most common finishes for marble - polished (glossy), honed (semi-polished or matte) and flamed (intense heat flaming to create a rough surface finish).

Concrete can also be honed, taking off enough of the cement matrix at the surface that the aggregate can be seen. Similar to terrazzo.

**aggregate** - c.1400, from *L. aggregatus* "associated," lit. "united in a flock," pp. of *aggregare* "add to," from *ad* "to" + *gregare* "herd," and *grex* "flock," so "to lead to a flock" (see *gregarious*).

**terrazzo** - Terrazzo was originally invented by Venetian construction workers as a low-cost flooring material using marble chips from upscale jobs. The workers would usually set them in clay to surface the patios around their living quarters. Consisting originally of marble chips, clay, and goat milk (as the sealer), production of terrazzo became much easier after the 1920s and the introduction of electric industrial grinders and other power equipment. 1895–1900; < Italian: balcony, terraced or flat roof < Vulgar Latin *\*terrāceus*, derivative of Latin *terra* ground

## Chapter Leaders

### BOARD MEMBERS

President: **Melissa Falcetti**, Applied Building Information  
President-Elect: **April Stokesberry**, Duradek Northwest  
Vice President: **Mary Ann Shepherd**, Applied Building Information  
Secretary: **Erika Anderson**, Anderson Specialties  
Treasurer: **Justin Bise**, MG2  
Director: **Robert Temple**, Hafele America Co.  
Director: **Susan Williams**, PPG Paints  
Director: **Rudy Jarvis**, Hilti North America  
Director: **David Landrey**, MASCO/Masons Supply Company  
Past President: **Kevin Vaughn**, The Euclid Chemical Corporation

### COMMITTEE LEADERS

Communications & Marketing Chair: **Lia Alia Wollard**, Applied Building Information  
Education Chairs: **Mary Ann Shepherd** and **Melissa Falcetti Balestri**, Applied Building Information  
Membership Chair: **Susan Williams**, PPG Paints  
ProSpec Chair: **Julie Taylor**, Integrus Architecture

## Affiliate Events

### CSI Mt. Rainier Chapter Holiday Dinner and Presentation

- "Preservation of Historic Masonry Buildings," Presented by Tonia Sorrell-Neal from the Masonry Institute of Washington
- Tour the Museum from 3:00 to 6:00 p.m.
- Holiday Ornament Contest benefiting local charity NW Furniture Bank
- Holiday Spirits Raffle



#### WEDNESDAY, DECEMBER 4, 2019

- 5:00 PM - 7:45 PM
- Location: Washington State History Museum
- [Click to read the flyer](#)

[Register Here!](#)

### Year End Charity Event and Mixer

#### THURSDAY, DECEMBER 5, 2019

- 6:00 PM - 9:00 PM
- Location: Doubletree Hotel, 16500 Southcenter Pkwy, Seattle, WA 98188
- [Click for More Information](#)



**FRIDAY, DECEMBER 6, 2019**

- 7:30 AM - 4:30 PM
- Location: The Motif, 1415 Fifth Avenue, Seattle, WA 98101
- [Click for More Information](#)

**Webinar: Materials Focus Group****EMBODIED CARBON NETWORK:  
Steel and Reducing Embodied Carbon****FRIDAY, DECEMBER 6, 2019**

- 9:00 AM - 10:00 AM PT
- [About the Embodied Carbon Network](#)
- [Click to Register](#)



Join us for a webinar and online discussion on steel and reducing embodied carbon presented by the ECN's Materials Focus Group on Friday, December 6th at 9:00 am Pacific. Our speakers are Luke Johnson, S.E., P.E. (American Institute of Steel Construction), Patrick Jablonski, P.E. (Nucor) and Ben Klingenstein, P.E., S.E., LEED AP (Magnusson Klemencic Associates). The presentation will cover how manufacturing methods, mill location, fuel mix, specifications and material efficiency all impact the embodied carbon content of steel as a building material. We will also discuss how the procurement of rebar and structural steel varies, and with it, the opportunities and challenges with obtaining granular EPD data. After brief presentations from our speakers, we will open up the discussion to field questions from the webinar attendees.

**SAVE THE DATE!**

RDH Building Science invites you to join their team for a full-day discussion on successful mass timber building enclosure design and risk mitigation.

**Early bird registration rate ends Dec. 4th!**

[Click for more information](#)

**SAVE THE DATE!****Portland CSI's Women In Construction:  
A LEARNING & LIBATIONS EVENT**

**WEDNESDAY, JANUARY 22, 2019**

6:00 PM - 9:00 PM

TOPGOLF

5505 NE Huffman St, Hillsboro, OR 97124

[Click for More Information](#)

## SAVE THE DATE!

**2020 CSI NW + W Bi-Region Conference  
Hosted by the Willamette Valley Chapter of CSI**

**APRIL 15 - 18, 2020**  
**SUNRIVER, OREGON**

Mark your calendars now to join us at the Sunriver Resort in Oregon for an exciting weekend of Education, Networking, Activities and Trade Show.

[Click for Conference Schedule](#)  
[Click for Sponsorship Opportunities](#)

