



## SPECTRUM

Newsletter of the Puget Sound Chapter CSI - April 2020 - VOL 76

In this Issue:

- COVID-19 Announcement
- Online Event Spotlight
- Upcoming Events
- Board of Directors Elections
- 2019-2020 Season Calendar
- Sponsorship Opportunities
- President's Message
- BOD Meeting Minutes
- Help Support CSI's Mission
- Technically...
- Chapter Leaders
- Affiliate Webinar Events

### COVID-19:

PSC CSI is committed to the safety of our members. As a result, in-person meetings will be rescheduled for a later date and/or will be moved to an online format. Please view Upcoming Events below for more information about each event change. We hope you're all staying healthy and safe.

**Webinar Opportunities Below - Including at 11 AM today!**

## Event Spotlight

### Web-Hosted Chapter Meeting and Seminar !

#### New 2018 State and Local Energy Code Amendments

Join us at the Monthly Chapter Meeting for this Presentation and Discussion

**THURSDAY, APRIL 9, 2020**

5:00 PM - 6:15 PM

WEB-HOSTED SEMINAR

- 5:00 - 5:10: Chapter announcements (Melissa Falcetti)
- 5:10 - 5:55: Presentation (Duane Jonlin)
- 5:55 - 6:15: Questions and Answers (Duane Jonlin)

[Register Here!](#)

Duane Jonlin is the **“Energy Code and Energy Conservation Advisor”** for **Seattle’s Department of Construction and Inspections**, and for eight years chaired the **Technical**

**Advisory Group** developing the Washington state energy code for the State Building Code Council.

**At the federal level**, he is a voting member of both the ASHRAE 90.1 Committee and the ICC Commercial Energy Code Committee.

Prior to taking his position at the City of Seattle, Duane was a principal at NBBJ, with **30 years' experience designing complex projects as a technical architect**. (And, he's been responsible for writing many project manuals.)

He is a featured speaker nationally on issues of **energy efficiency** and **energy regulations**, and in 2016 was elected to the **American Institute of Architects College of Fellows**.



**Duane Jonlin FAIA**  
Energy Code and Energy  
Conservation Advisor,  
Seattle Department of  
Construction and  
Inspections

**Do you have a question** you'd like Duane Jonlin, FAIA, to address in his presentation?

**Questions sent in advance will have priority!**

**Submit  
Questions  
Here!**

## Upcoming Events



**POSTPONED - Date TBD**

[Kick Some Axe!](#)  
[Networking Event](#)



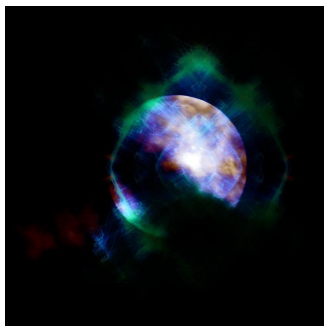
**POSTPONED - Date TBD**

[CDT Prep Class 3 of 3](#)



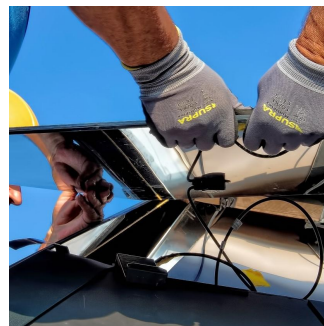
**RESCHEDULED**

[September 28, 2020](#)  
[ProSpec](#)



**NOW WEB-HOSTED!**

April 9, 2020  
[New 2018 State and Local](#)



**Date TBD**

May 14, 2020  
Installation Demonstration



June 11, 2020  
Puget Sound CSI  
Awards Ceremony

## Board of Directors Elections

### BOARD OF DIRECTORS ELECTIONS FOR 2020-2021

PSC CSI elections will take place electronically in March. Voting Members, watch out for your ballot, coming soon!

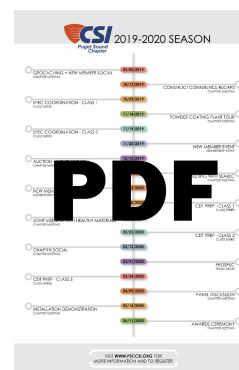
- **President:** 3 year commitment; first year as President-Elect, learning the role; the following year as President; and the final year as Past-President, acting as an advisor for the following season's President.
- **Vice President:** 1 year term.
- **Secretary:** 1 year term.
- **Director #3:** 2-year term; serve as a liaison between committees and the Board.
- **Director #4:** 2-year term; serve as a liaison between committees and the Board.

Interested? [Email our office for more information](#)

## 2019-2020 Season Calendar

Our 2019-2020 season calendar is now available as a printable graphic.  
[Download it here](#) and don't miss an event!

Take me to the [PSC CSI Website](#) for more information.



[Download.pdf](#)

## Sponsorship Opportunities

Sponsorship packages are available for all our [events](#).  
Please click on registration links for events above for sponsorship information.

## President's Message

### CSI Adapting to a Changing World

by Melissa Falcetti, PSC CSI President

Never before has technology afforded us the opportunity to stay connected to our

communities through adversity, in the ways we've found to come together over the past month. Not only have our worlds and daily lives changed, but our context and perspective as well. After traveling to several high-risk locations, I write to you from the end of *my* two-week quarantine, and like many, it's given me time to slow down and to reflect deeply for what feels like the first time in years. For those of us lucky enough to still have our jobs and the ability to work from home, there is opportunity in reexamining the way we approach our work. As stressful as this time is for all of us, **it's also the time to take a deep breath, create and revise plans, and reevaluate our goals.** Without knowing for certain how long we are destined to be apart, or what the rules of the game will be once we are reunited, **we are able to support our community and colleagues via technology, and to focus on the portions of our lives we can control.**

If your renewed plan includes career aspirations, keep an eye on our “**Affiliate Events**” section at the bottom of the Spectrum. Our Communications Chair, Lia Alia Wollard, will be sharing various industry webinars you can attend throughout the month. Join us April 9th for our first web-hosted Chapter Meeting - *unlimited drink tickets and virtual cheers!*  
**The first thing to celebrate: ProSpec in September!**

Thank you to everyone for your patience as we postpone and reschedule events, and as we work to stay connected to each other, and continue to provide exceptional educational opportunities. **The April chapter meeting will be held online-** afterward, we'd love your feedback on how to improve the meetings and make them as useful to you as possible moving forward. Chances are good we will host one or two additional chapter meetings online, and we want to make sure to provide the best experience possible.

All of us at CSI hope you're safe and healthy, and we look forward to seeing you in person, and when it's safe again to do so.

## Board of Directors Meeting Minutes

Board Meeting minutes:

- [December 2019](#)

## Help Support CSI's Mission

In 2007, the Puget Sound Chapter CSI established the Puget Sound CSI Memorial Foundation, **a separate organization providing scholarships, fellowships, and grants to promote educational programs serving the construction industry** and related endeavors which support the interests and objectives of the Puget Sound Chapter. The Foundation is administered by a board of volunteers, composed of willing past presidents of the Puget Sound Chapter. Any individual or organization can contribute tax deductible donations to the Foundation. You can donate to the Foundation via our PayPal account, or by mailing a check made out to:



**Puget Sound CSI Memorial Foundation, Inc.**  
PO Box 82062  
Kenmore, WA 98028-0062

**Past donations have been used to award scholarships** to candidates selected on the basis of recommendations by the Foundation Board and by Chapter members. The Foundation is always interested in your **fund-raising ideas and financial support** to promote the Foundation's objectives.

# Technically...

## John Aldridge of LMN on the Origin of Words

Well - you know .... working from home you can sometimes lose track of what day of the week it is.

**virus** - an ultramicroscopic (20 to 300 nm in diameter), metabolically inert, infectious agent that replicates only within the cells of living hosts. C16: from Latin: slime, poisonous liquid; related to Old English wāse marsh, Greek ios poison

**pandemic** - (of a disease) prevalent throughout an entire country, continent, or the whole world. 1660C70; < Late Latin pandēm(us) < Greek pándēmos common, public (pan- pan- + dēm(os) the people + -os adj. suffix) + -ic "all of the people"

**pandemonium** - wild uproar or unrestrained disorder; tumult or chaos. 1660C70; after Pandaemonium, Milton's name in Paradise Lost for the capital of hell. "all of the demons"

**epidemic** - (of a disease) affecting many persons at the same time, and spreading from person to person in a locality where the disease is not permanently prevalent. C17: from French épidémique, via Late Latin from Greek epidēmia literally: among the people, from epi- + dēmos people

**vaccine** - any preparation used as a preventive inoculation to confer immunity against a specific disease. C18: from New Latin variolae vaccīnae cowpox, title of medical treatise (1798) by Edward Jenner, from Latin vacca a cow. Smallpox likely emerged in human populations about 10,000 B.C. During the 18th century the disease killed an estimated 400,000 Europeans each year, including five reigning monarchs, and was responsible for a third of all blindness.<sup>[3]</sup> Between 20 and 60% of all those infected—and over 80% of infected children—died from the disease.

**pathogen** - any disease-producing agent, especially a virus, bacterium, or other microorganism. First recorded in 1940C45; patho- + -gen, literally "that which produces suffering or disease"

**renewal** - an instance of resuming an activity or state after an interruption; the replacing or repair of something that is worn out, run-down, or broken. [Lia Alia]

**be well and protect yourselves and others.**

## Chapter Leaders

### BOARD MEMBERS

President: **Melissa Falcetti**, Applied Building Information  
President-Elect: **April Stokesberry**, Duradek Northwest  
Vice President: **Mary Ann Shepherd**, Applied Building Information  
Secretary: **Erika Anderson**, Anderson Specialties  
Treasurer: **Justin Bise**, MG2  
Director: **Robert Temple**, Hafele America Co.  
Director: **Susan Williams**, PPG Paints  
Director: **Rudy Jarvis**, Hilti North America  
Director: **David Landrey**, MASCO/Masons Supply Company  
Past President: **Kevin Vaughn**, The Euclid Chemical Corporation

### COMMITTEE LEADERS



Communications & Marketing Chair: **Lia Alia Wollard**, Applied Building Information  
Education Chairs: **Mary Ann Shepherd** and **Melissa Falcetti**, Applied Building  
Information  
Membership Chair: **Susan Williams**, PPG Paints  
ProSpec Chair: **Julie Taylor**, Integrus Architecture

## Affiliate Events



### **WEBINAR:** **Avoiding Common Paint Problems**

This WebReach will cover proper preparation of surfaces, explore how to identify common paint failures and provide ideas for correct solutions.

**WEDNESDAY, APRIL 1, 2020**

11:00 AM PACIFIC DAYLIGHT TIME

1 HOUR / 1 LU/HSW

Sponsored by



**[CLICK TO SIGN IN AND REGISTER](#)**



### **WEBINAR SERIES:** **International Masonry Institute**

**9:00 AM PACIFIC** - 1 LU/HSW EACH - Click on Course Name to Register and for more information

- TUESDAY, APRIL 7, 2020 - **[Masonry Movement Joints](#)**
- TUESDAY, APRIL 14, 2020 - **[Restoring Existing and Historic Tile and Terrazzo](#)**
- TUESDAY, APRIL 21, 2020 - **[Structural Masonry: How to Get a Fast start, Speed up Construction, Reduce Cost](#)**
- TUESDAY, APRIL 28, 2020 - **[Technology & Safe Work Environments](#)**
- TUESDAY, MAY 5, 2020 - **[Critical Points for Tile Design and Installation](#)**
- TUESDAY, JUNE 9, 2020 - **[Terra Cotta Construction & Restoration](#)**



**WEBINAR: Meet the Expert Series**  
**AF026 Commerical High Performance Coatings**  
**Speaker: Ron Watts, PPG Technical Sales**  
**Manager**

**TUESDAY, APRIL 14, 2020**

9:30 AM PACIFIC DAYLIGHT TIME

DURATION: 1 HOUR

**WEBINAR:**  
**ACT NOW: Accelerating Pathways to  
Decarbonization**

TUESDAY, APRIL 21, 2020

8:30 AM - 5:00 PM PACIFIC

7 LU/HSW

[Click here for more information!](#)

