



## SPECTRUM

Newsletter of the Puget Sound Chapter CSI

### President's Message

*Bill Littler, CSI*

I hate to sound so cliché, but this past year has flown by. I'm melancholy when I think this will be my last "president's message" for the Puget Sound chapter of CSI. There were times writing these newsletters was stressful as I didn't have a specific topic in mind, so I had to sit myself down at the keyboard and just start writing (think about when this used to be a pencil and paper - I would have had piles of wadded up sheets). Other times I was clear on my topic and it just seemed to flow. Either way, it has been a privilege to serve as your president this past year.

Up to this point I have written predominantly of the structural/architectural qualities of our industry. There is much to be said about wonderful architecture and the merits of great buildings. However, a building isn't complete until the interiors are installed. And who are the ones most often responsible for this all-important job - Interior Designers.

A friend of mine defined interior design this way: "Interior design is a combination of art and science. It involves understanding human behavior, culture and wellbeing to develop a space that brings out the best in people. Interior designers consider sociology, psychology, ergonomics, wellbeing and sustainability in the pursuit of delivering space that ultimately supports people."

This is the team that can take a wonderful shell and through the design process create a unified space where the architecture and the interiors find that wonderful balance of form and function. Interior designers marvel in the delight and beauty of their interdisciplinary role. They combine science with human behavior and mix in the aesthetic so their projects reach their best function. They understand what is needed to help form & function flow together seamlessly.

As well as being a member of CSI, I am also a member of IIDA (International Interior Design Association). Architects and designers have complimentary functions - like milk & cookies, printers & cartridges or Thelma & Louise - architects and designers strengthen

**June 2017  
Volume 56  
Issue 12**

#### **In This Issue...**

1. [President's Message](#)
2. [Quick Pitches](#)
3. [June Chapter Programs](#)
4. [Memorial Foundation](#)
5. [Small Brush with Fame](#)

#### **EVENTS CALENDAR 2016-2017**

**Chapter Program  
Topics**

**June 14, 2017**

*Awards Program*

#### **BOARD OF DIRECTORS**

**President**

[Bill Littler](#)

**President Elect**

[Bob Mandy](#)

**Vice President**

[Melissa Balestri](#)

**Secretary**

[Julie Oxford](#)

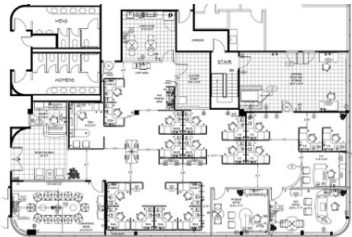
one another rather than compete. When you consider what differentiates a house from a home, it is the finishing touches that make it function, flow and feel "hyggeligt". This is a Danish word that is most often translated "cozy", but the feeling is much deeper in the original language.

I believe that pictures tell a story that words alone lack, so I would like you to walk through the interior design process with me.

1. Schematic Interior Design, the genesis of the interior planning process - Here is where spatial adjacencies and flow are established. At this phase, the "design" is most focused on function.



2. Space Planning - going from 30,000 feet to ground level - Bubble diagrams become walls as many iterations of sketches are blended to create the final hard-lined version. We now have definition of space!



3. Design presentation and interiors selection process - furniture and finishes - There are typically several iterations of finishes, from schematic through design development. Look and feel is layered on top of architectural moves for one cohesive experience. Ideally, look and feel is considered as early as possible to completely blend interior architecture with what most people understand as "decoration." The integration of the two should be seamless.

**Treasurer**  
[Ed Storer](#)

**Directors**  
[Brian Henry](#)  
[Jenifer Lewis](#)  
[Brad Glauser](#)  
[Wick Temple](#)

**Past President**  
[David Landrey](#)

### COMMITTEE CHAIRS

**Education**  
[Melissa Balestri](#)

**Membership**  
[Brad Glauser](#)

**Nominations**  
[Ed Storer](#)

**ProSpec**  
[Julie Taylor](#)

### COMMUNICATIONS AND MARKETING COMMITTEE

[Linda Arvesen CSI](#)

[Konrad Hee CSI CCS](#)  
[Kevin Vaughn CSI](#)

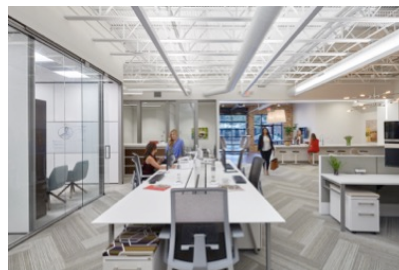
**Spectrum** is published monthly as a benefit for members of the Puget Sound Chapter CSI.

Articles must be submitted by the 15th of the month for the next month's edition. Email submissions to [office@psccsi.org](mailto:office@psccsi.org).

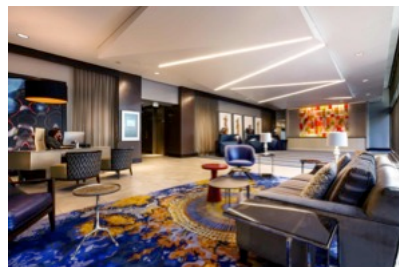
Visit [www.psccsi.org](http://www.psccsi.org) to



4. The finished product - a beautiful, functional work environment supporting the people that reside there. However the interior design process doesn't stop at the "final product". To enhance the productivity and future work, post occupancy evaluations are performed to validate design and make needed adjustments.



Here is an example of what happens when architects, designers, contractors and specialty subcontractors collaborate - an environment integrating all the components - where the architecture and the interiors complement each other.



Elegance and acoustics - the marriage of form and function through interior design- the designer's goal was to create an intimate dining experience while also addressing the acoustics within the space seamlessly.

subscribe or to view current and back issues.

#### LINKS

[Northwest Region CSI](#)

[Portland Chapter CSI](#)

[Mount Rainier Chapter CSI](#)

[Spokane Chapter CSI](#)

[Willamette Valley Chapter CSI](#)

[Capital Chapter CSI](#)

[Idaho Chapter CSI](#)

[Big Sky Chapter CSI](#)

[Join CSI](#)



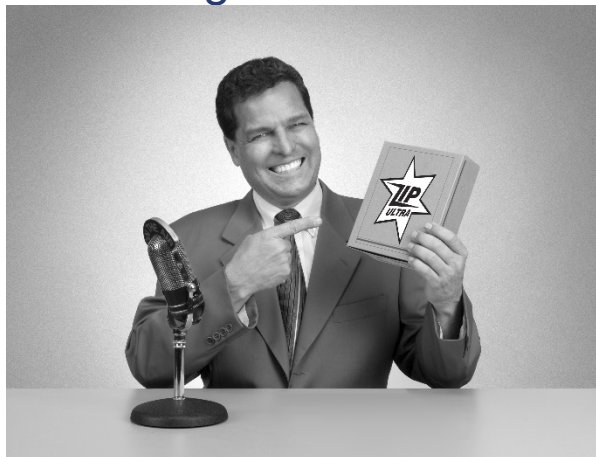


The discipline of Interior Design is multi-faceted and requires the specialists to understand all the diverse components. Again, it is more than just taking an empty shell and filling it with "stuff". It takes gifted individuals to perform all that is required to create beautiful, engaging, functional interior spaces. The ability to visualize and conceptualize is a gift given both to the architect and the designer. Taking an idea and bringing it to life is an art - one that is best accomplished through collaboration and cooperation.

Thank you and Godspeed.

---

## Chapter Meeting Quick Pitches



There are presently openings next Fall for 10-minute Quick Pitches for our chapter meetings. The cost is \$150. Any member or non-member can present. If interested, contact Dick Owen for questions or to reserve your date. This is a great opportunity to introduce our chapter members to you, your products, or services.

---



**YOUR ENGINEERED DAYLIGHTING  
PRODUCTS RESOURCE.**  
- GLASS SKYLIGHTS AND CANOPIES  
- KALWALL TRANSLUCENT PANEL SYSTEMS

**CONTACT:**  
ANTHONY JENSEN  
ANTHONY@DEAMOR.COM

 **DeaMor**  
DEAMOR.COM

---

## June Chapter Programs

### **June 14th Dinner Meeting: Annual Awards Banquet**

**Location:** [Space Needle SkyLine Private Dining Room](#), 203 6th Ave.  
North, Seattle, WA 98109

**Date:** Wednesday, June 14, 2017

**Social Hour:** 5:00-6:00 pm, Dinner: 6:00-8:30 pm

**Cost:** \$50 members / \$55 non-members / \$35 students

Please join us as we recognize the contributions and achievements of our Puget Sound Chapter members and welcome the new 2017-18 board members.

We will be celebrating 100 feet directly above the Chihuly Garden and Glass House, with stunning views of Elliott Bay, Lake Union, and Seattle's skyline. *Complimentary access to the Space Needle Observation Deck is included.*

Valet Parking at the Space Needle is available, but not included in dinner costs.

**[Register Now!](#)**

---



The Puget Sound Chapter CSI has a separate organization, the Puget Sound CSI Memorial Foundation, established in 2007, whose purpose is to provide scholarships, fellowships, and grants to promote educational programs serving the interest of the Puget Sound Chapter of the Construction Specifications Institute, the construction industry, and related endeavors, which support the objectives of CSI. The Foundation is administered by a volunteer board composed of willing past presidents of the Puget Sound Chapter. Brad Williamson is the current president of the Foundation Board. Any individual or organization can contribute tax deductible donations to the Foundation by sending a check made out to the Puget Sound CSI Memorial Foundation and mailing to the Puget Sound Chapter office: 2150 N. 107th St., Suite 205, Seattle, WA 98133-9009, Phone: (206) 382-3393 (The Foundation is a 501(c)(3) organization). Donations in the past have been used for scholarship awards to candidates selected on the basis of recommendations by the Foundation Board and by Chapter members. The Foundation is always interested in your fund raising ideas and financial support to promote the Foundations objectives.

---

International Masonry Institute (IMI)  
invites you to:  
**“Masonry Day, The  
Building Enclosure”**

**DATE / TIME / LOCATION**  
Friday, May 5, 2017  
8:00 am to 2:30 pm

**South Seattle Community  
College**  
Duwamish Branch, Building D  
6737 Corson Avenue South  
Seattle, WA 98108



---

**Continuing Educational Credits**  
This program meets AIA/CES criteria for **4 LU/HSW**

---

## Small Brush with Fame

*By Sheldon Wolfe, RA, FCSI, CCS, CCCA, CSC*

One of the most treasured awards I received from CSI is the Ben John Small Memorial Award. First presented in 1996, and limited to one per year, only eleven people have received this award.

The award, originally intended "to honor those who have achieved outstanding stature and proficiency as specifiers," is named after Ben John Small, charter member and president of the Metropolitan New York Chapter. Ben was well known as an educator; he was a frequent lecturer at Columbia University, Princeton University, the Massachusetts Institute of Technology, and the Virginia Polytechnic Institute. He wrote columns for *Pencil Points Magazine*, which later became *Progressive Architecture*. He also wrote a number of books, including *Architectural Practice*, *Building check list*,

and *Streamlined specifications standards*. (I have two of these books in my library.) [Read More](#)



---

**Your (Competitor's) Ad Here**  
Advertise in the Spectrum Newsletter  
(It costs less than you think.)



[Click here for more information](#)

---



## About CSI

CSI is a national association of specifiers, architects, engineers, contractors, facility managers, product representatives, manufacturers, owners and others who are experts in building construction and the materials used therein. They are dedicated to improving the communication of construction information through:

- A diversified membership base of allied professionals involved in the creation and management of the built environment. Join us.
- Continuous development and transformation of standards and formats.
- Education and certification of professionals to improve project delivery processes.
- Creation of practice tools to assist users throughout the facility life-cycle. Join a CSI Practice Group.

CSI is governed by a Board of Directors, a nationally elected body that provides long-range strategic leadership. The Board is composed of nationally elected CSI officers, including the board chair, president-elect, two vice presidents, the secretary, and the treasurer; elected representatives (directors) from each of CSI's 10 regions; and a director at large. CSI's CEO is a corporate officer.

For more information about or to join CSI, visit [www.csinet.org/joincsi](http://www.csinet.org/joincsi), or call 800-689-2900.

Puget Sound Chapter CSI | 206-382-3393 | [office@pscsci.org](mailto:office@pscsci.org)

Puget Sound Chapter CSI Office: 5727 Baker Way NW, Suite 200, Gig Harbor WA 98332

Phone: 253-265-3042 Email: [office@pscsci.org](mailto:office@pscsci.org)

© Copyright 2018 | All Rights Reserved

[Privacy Policy](#)

- [Chapter Contact Info](#)