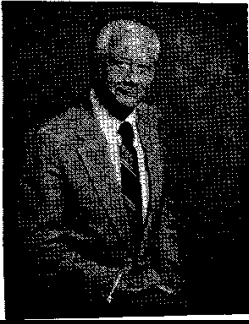
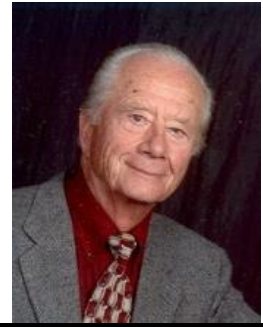


Milton C. Potee*, FCSI



"In recognition of your persuasive and persistent efforts in promoting the aims and goals of the Institute, and your contributions to the merger of two regions into the present North Central Region, you are advanced to Fellowship in the Institute on this 19th day of June 1980"
Anaheim, California



MILTON C. POTEЕ was born in Ames, Iowa, in 1925.

After graduating from Ames High School in 1943, Milt enlisted in the Army Air Forces. In March 1944, he graduated from aerial gunnery school and was sent to the 370th Bomb Squadron, 307th Bombardment Group, "The Long Rangers." He served thirteen months as a B-24 tail gunner in the Pacific Theatre.

Milt graduated from the University of Iowa with a Bachelor of Science degree in 1950. Potee, an Industry Member of the Chicago Chapter, was district sales manager for Pratt & Lambert, Inc., Chicago from 1950 to 1988.

After joining CSI in 1964, Milt was active in CSI affairs at the chapter, region, and Institute levels. In the Chicago Chapter, he served as chair of various committees, as a board member, and as vice president. He introduced a number of innovations in the Chicago Chapter that expanded the scope of its activities throughout the Chicago area construction industry.

Potee served as chair of the Convention Host Chapter Committee for CSI's 1970 convention in Chicago.

He served as a CSI Section Director 1971-1973 and again in 1976. During 1974-1975 he was a member of the Institute Finance Committee and in 1978-1979 he served as an Institute vice president. He received numerous chapter and region awards.

Potee also was a member of the Illinois and Chicago Chapter, PDCA (Painting and Decorating Contractors of America). He lectured on construction topics at various institutions in the Chicago area. He also maintained contact with The Long Rangers after WWII, attending occasional reunions.

Potee established the firm of Gemini Consultants, Inc., in Lowell, Arkansas in 1989.

Potee passed away on 12 April 2018, in Rogers, Arkansas.

CSI Membership

Chicago, 1964

Institute Offices, Committees

Section Director, FY 1972-73, FY 1975

Vice President, FY 1979

Chapter Offices, Committees

Vice President, FY 1970

Awards

Certificate of Merit and Appreciation, 1973

Institute President's Plaque, 1973

Certificate of Merit and Appreciation, 1976

Certificate of Appreciation, 1990

Robert P. Brosseau Award, 1994