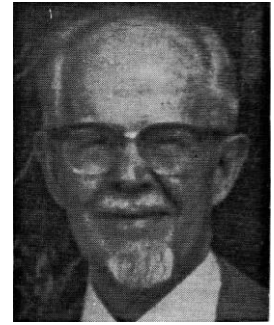


# Terrell R. Harper\*, FCSI

*"In recognition of your distinguished and dedicated service to the Construction Specifications Institute, as a member, as a co-founder and leader of your Chapter, as National Director, as Chairman National Technical Committee, as National Vice President, in your assistance in chartering many new chapters, for your guidance and leadership in making the C.S.I. a significant force in the construction industry you are advanced to fellowship in the Institute on the 22nd day of May 1963."*

*Detroit, Michigan*



Terrell R. Harper, was born in Fort Worth, Texas in 1908. He grew up in San Antonio, Texas and studied architecture at Texas A & M University.

He was first employed in 1927 by architects in San Antonio, Texas, as a draftsman and field representative. During the 1930's he was a building inspector for government buildings for the Public Works Administration in Texas and Oklahoma. In 1940 he joined the Dallas-based firm of George L. Dahl Architects and Engineers as Chief of Specifications. In 1954, he opened his own office, and the following year designer Harris A. Kemp joined him in partnership. Harper & Kemp merged with James A. Clutts and Howard C. Parker in 1975, forming the firm of Harper, Kemp, Clutts and Parker.

He joined the Construction Specifications Institute in 1949 as a member-at-large. When a group of members first met to form a chapter in Dallas, he enthusiastically joined the effort. When the chapter was chartered in 1957, he was elected first chapter Secretary. Two years later he was elected third Chapter President.

Harper was active at the Institute level from the very beginning. While serving as a chapter officer, he was appointed to serve as chairman of the Institute's Technical Committee T4 (Architectural). This committee was responsible for coordinating the technical work of all CSI chapters. It preceded the establishment of the Institute's Technical Review Board.

After serving the Institute as Director from 1960 through 1961 and Vice President in 1963 and 1964, Harper served as the Institute's twelfth president in 1965. During his term the

number of industry members serving on the Institute Board increased from three to six.

Harper also was active on many important Institute Ad Hoc Committees. In the early days, he was appointed co-chairman of the Ad Hoc Committee to study Region Boundaries. He later became chairman of the Ad Hoc Committee to study Associate Member Representation of the Institute Board. (In the early days of the Institute, the Associate membership classification was used for what is now known as Industry members). This committee was the major force behind expanding industry member participation in Institute affairs and ultimately led to his appointment to an Ad Hoc Committee to study questions of membership classifications and the eligibility of industry members to serve as Institute President.

Harper's most memorable assignment was his appointment in 1976 as chairman of the Ad Hoc Committee that created the Certified Construction Specifier Program. This committee set the groundwork for the Institute's hallmark certification programs that have been a major force in improving the quality of specification writing in this country.

Harper was also active with the American Institute of Architects. For many years he served on AIA's Documents Review Board. In this capacity he wrote the chapter on specifications for the AIA's *Handbook of Professional Practice* and made major contributions to many of the other chapters. He also helped develop the AIA General Conditions of the Contract for Construction and the other documents that are used in construction by most architectural firms. He was invested as a Fellow in the AIA in 1965.

## **CSI Membership**

At-Large: 1949 - 1957

Dallas Chapter: 1957 -

## **Institute Offices, Committees**

President: 1965

Vice President: 1963 - 1964

Director: 1960 - 1961

## **Chapter Offices, Committees**

President: 1960

Vice President: 1959

Secretary: 1958

## **Awards**

Distinguished Member

Life Member

President's Plaque

Certificate of Appreciation