



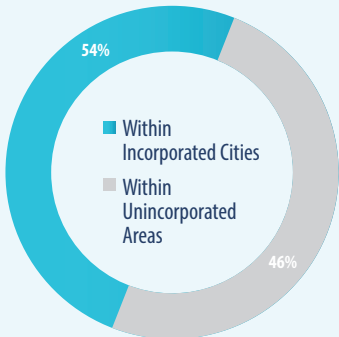
California Special Districts Association
Districts Stronger Together

SPECIAL DISTRICTS COVID19 IMPACTS

Special Districts Provide Essential Services to Millions + Employ Tens of Thousands Public Servants

Throughout the unprecedented public health and economic crisis resulting from COVID19, California's 2,000+ independent special districts continue to provide core local services to communities.

SPECIAL DISTRICTS SERVE COMMUNITIES STATEWIDE

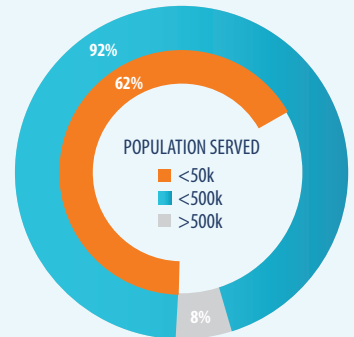


OPERATING CRITICAL FACILITIES AND INFRASTRUCTURE

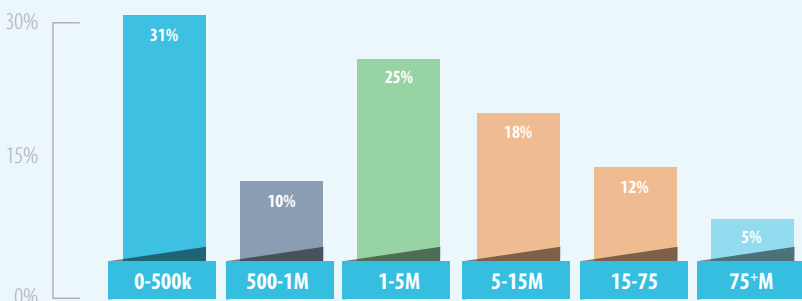


Airport, Harbor/Port, Reclamation/Levee, Healthcare, Fire Protection, Sanitation, Utility/Energy, Water, Transit
 As designated by the US Department of Homeland Security

SPECIAL DISTRICTS SERVE COMMUNITIES LARGE AND SMALL



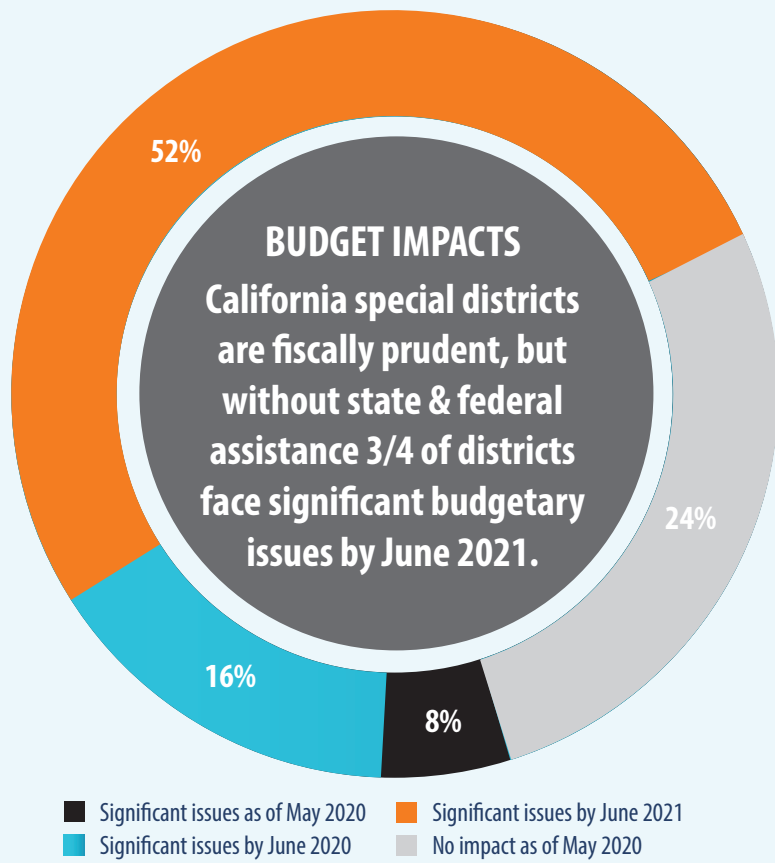
VARYING OPERATING REVENUES



ADAPTING SERVICES TO LOCAL COMMUNITIES FOR COVID19 RESPONSE



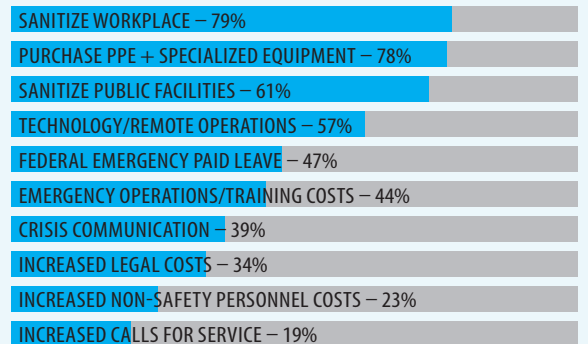
ACTIONS TAKEN TO SUSTAIN + MAINTAIN SERVICES



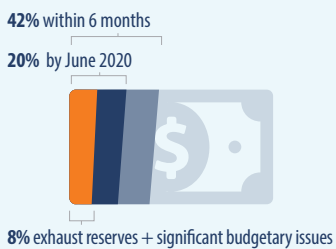
ADDITIONAL UNBUDGETED EXPENDITURES & DIRECT REVENUE LOSS

As of May 5, 2020

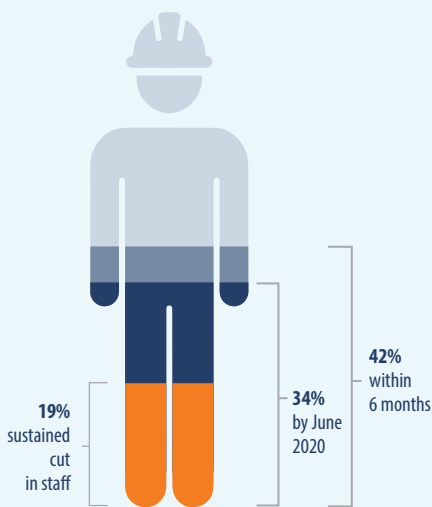
% OF DISTRICTS WITH INCREASED EXPENDITURES IN THESE AREAS



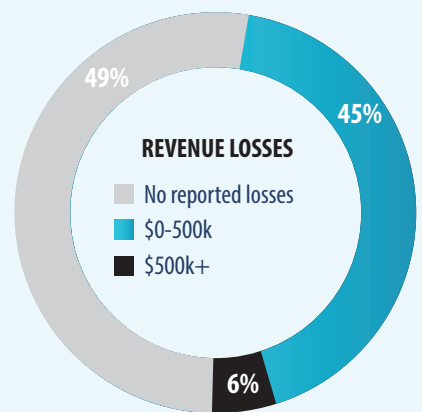
DRAWING DOWN RESERVES



CUTTING OR DECREASING STAFF



CUTTING/DECREASING SERVICES



\$80M

Estimated total additional COVID19 related expenditures for all special districts

\$167M

Estimated total COVID19 related revenue loss for all special districts

Special Districts seek federal and state partnership to access the fiscal assistance and financial tools necessary to maintain critical local services and infrastructure California communities rely upon and to stand ready against the next disaster.

*Data and assumptions: The California Special District Association (CSDA) COVID19 Fiscal Impact Survey was open to all independent special districts across California regardless of membership status with CSDA. The data captured represents 423 individual respondents as of May 5, 2020 and captures local impacts to all district types and services of varying operating revenue and service populations, encompassing diverse geographic and socioeconomic areas throughout the State. Projected total expenditures and revenue loss to all special districts directly attributable to COVID19 are estimated losses incurred from data cited by the representative survey sample as of May 2020.