



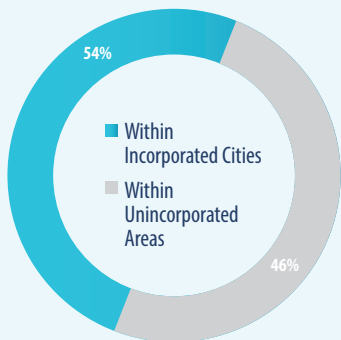
**California Special Districts Association**  
Districts Stronger Together

# SPECIAL DISTRICTS COVID19 IMPACTS

Special Districts Provide Essential Services to Millions + Employ Tens of Thousands Public Servants

Throughout the unprecedented public health and economic crisis resulting from COVID19, California's 2,000+ independent special districts continue to provide core local services to communities.

## SPECIAL DISTRICTS SERVE COMMUNITIES STATEWIDE

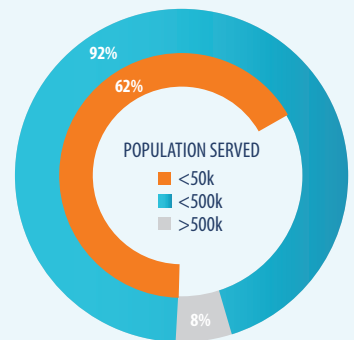


## OPERATING CRITICAL FACILITIES AND INFRASTRUCTURE

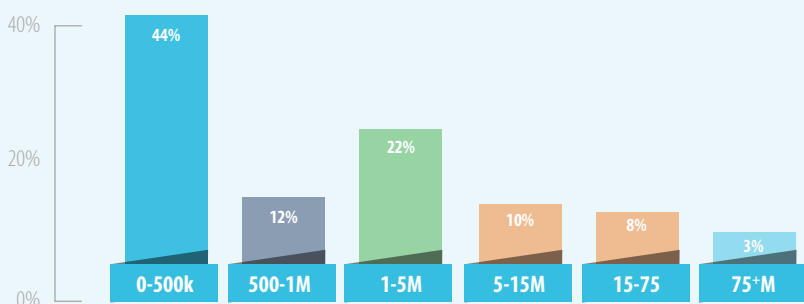


Airport, Harbor/Port, Reclamation/Levee, Healthcare, Fire Protection, Sanitation, Utility/Energy, Water, Transit  
As designated by the US Department of Homeland Security

## SPECIAL DISTRICTS SERVE COMMUNITIES LARGE AND SMALL



## VARYING OPERATING REVENUES

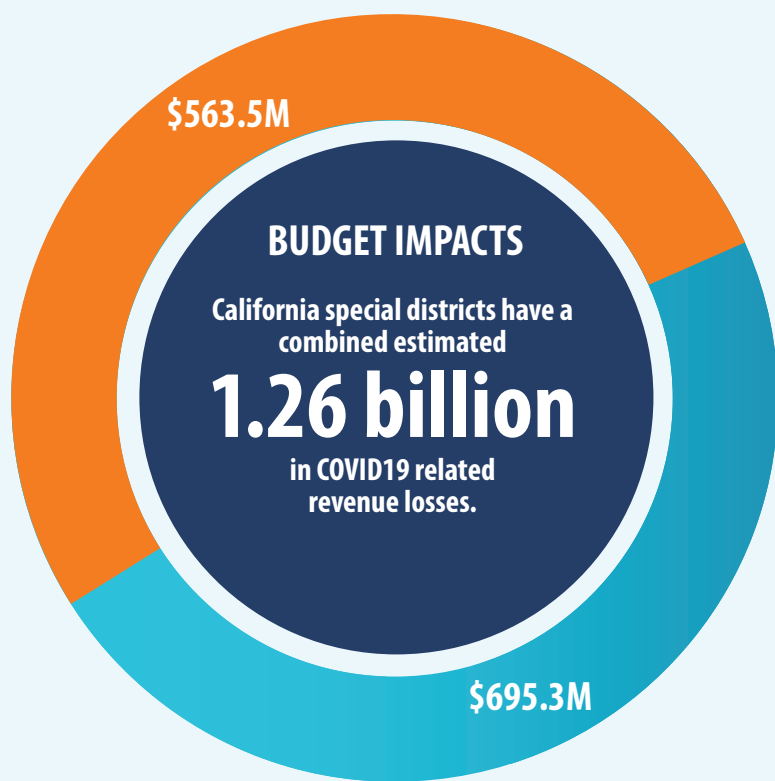


Per State Controller's Office FY18 data, rounded to nearest whole number

## ADAPTING SERVICES TO LOCAL COMMUNITIES FOR COVID19 RESPONSE



## ACTIONS TAKEN TO SUSTAIN + MAINTAIN SERVICES



**BUDGET IMPACTS**  
California special districts have a combined estimated **1.26 billion** in COVID19 related revenue losses.

Estimated COVID19 related expenditures    Estimated COVID19 related revenue loss

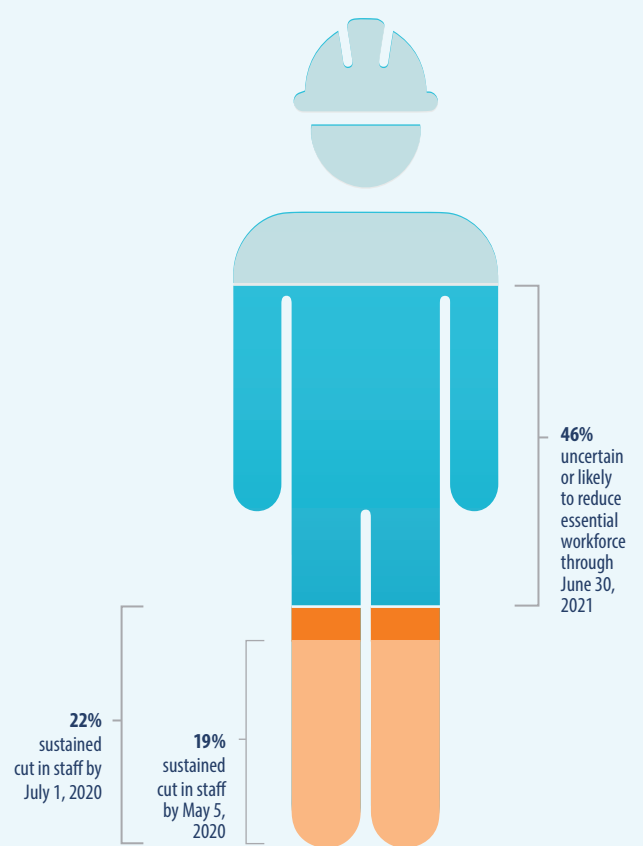
As of July 1, 2020 and anticipated over the next fiscal year

**SPECIAL DISTRICTS HAVE BEEN LEFT OUT OF COVID-19 RELIEF FOR LOCAL GOVERNMENT IN THE CARES ACT. WITHOUT STATE & FEDERAL ASSISTANCE COMMUNITIES STATEWIDE WILL EXPERIENCE FURTHER REDUCTIONS TO ESSENTIAL SERVICE LEVELS.**

## CUTTING OR DECREASING SERVICES



## CUTTING OR DECREASING STAFF



**Special Districts seek federal and state partnership to access the fiscal assistance and financial tools necessary to maintain critical local services and infrastructure California communities rely upon and to stand ready against the next disaster.**

\*Data and assumptions: The California Special Districts Association (CSDA) conducted a series of COVID19 fiscal impact surveys between April 2020 and July 2020 that were open to all independent special districts across California regardless of membership status with CSDA. Data captured as of the May 5 survey represents individual responses from 423 special districts and as of the July 1 survey represents another 265 individual responses from independent special districts throughout the state. These responses collectively capture local impacts to all district types and services of varying operating revenue and service populations and encompass diverse geographic and socioeconomic areas. Projected total COVID19 attributable expenditures and revenue loss to all independent special districts represented in this infographic are estimated losses incurred from data cited by the representative survey sample conducted by CSDA as of July 1, 2020.