



ADP Consulting is a trusted, sustainability-led multi-services engineering consultancy with an international footprint.

We are renowned for finding the best technical and sustainable solutions to the most complex projects, wherever these may be.



We work across all sectors with industry-leading partners who share our passion for innovation, design excellence and, importantly, our impact on the planet.

ADP Consulting has now joined forces with **Ayesa**, one of the world's largest technology and engineering companies, in a move that facilitates new pathways and accelerates our growth. We provide building services engineering, structures, sustainability, ICT, acoustics, audio visual, security, vertical transportation, specialist lighting and energy design to the property and construction industry.

About the team



Daniel Johnson

Daniel is a senior engineer with 20+ years' experience, leading ADP's UK expansion with a focus on sustainable design across a wide range of sectors including build-to-rent, education, and asset revitalisation projects. He has a proven track record of delivering outstanding results while spearheading business growth and fostering solid, long-term relationships.



Lauren Williams

Lauren Williams is a seasoned sustainability consultant at the forefront of delivering projects that integrate sustainability principles across the design, construction, and operation phases of buildings. She serves as a valuable advisor to developers, providing advice on cost-effective strategies to achieve sustainability targets while meeting client expectations.



Jackson Riseley

Jackson is a UK-based Associate and mechanical engineer with global experience across Europe, Australia, and New Zealand. He is a trusted adviser to clients and industry peers, known for delivering clarity and confidence in complex scenarios.



Melani King

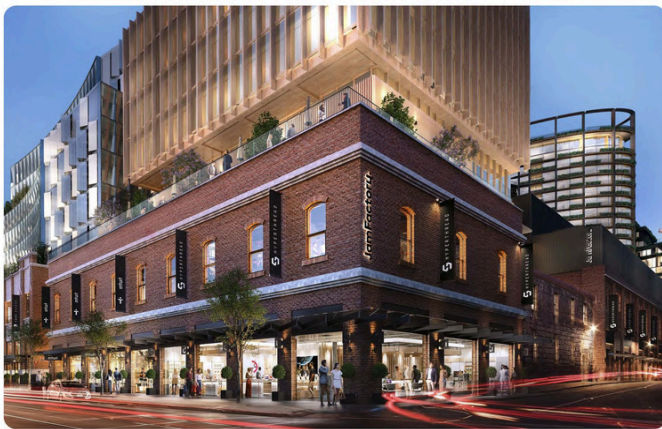
Melani is Head of Growth London, driving business development and client engagement in the UK. With 20+ years' global experience, she excels in building lasting partnerships and identifying new opportunities for collaboration and impact.

Project snapshot



Stadium Santiago Bernabeu Madrid, Spain

Ayesa was appointed lead consultant and project manager for the remodelling of Madrid's famous Santiago Bernabéu Stadium- the home of football club Real Madrid. Ayesa's role was crucial in ensuring the ambitious project, which aimed to transform the venue into a modern "digital stadium" with year-round event capabilities, could be carried out without interrupting Real Madrid's core sporting and business activities.



The Jam Factory Melbourne, Australia

The brainchild of luxury property developer GURNER™ and Qualitas Group, the multi-billion-dollar redevelopment of the Jam Factory promises to bring world-class luxury to Melbourne's renowned Chapel Street Precinct. Having successfully delivered a number of high value projects for GURNER™, our team has again been engaged to lead the delivery of specialist building services on the project, including Mechanical, Electrical, Fire Protection, Hydraulics, Specialist Lighting, Sustainability, Communications and Security.



Westpac London Fitout London, United Kingdom

In relocating its London headquarters to Gresham Street, Westpac sought a design that would transcend a mere change of address. The brief called for a space that would honor its deep heritage while embodying a contemporary ethos of welcome, collaboration, and environmental stewardship. The new workspace is a powerful statement of identity, reflecting the bank's deep-rooted origins and its expansive global presence. The result is more than an office; it is a deliberately collaborative environment and a cultural nexus designed to foster deeper connections with clients.

'Think' is a thought leadership series developed by ADP Consulting to ask and answer some of the big questions confronting the property and construction industry.

Scan the QR code to read our latest thought leadership.



PROUD SPONSORS OF THE
CORENET YOUNG LEADERS
END OF SUMMER SOCIAL

LET'S GO TO WORK

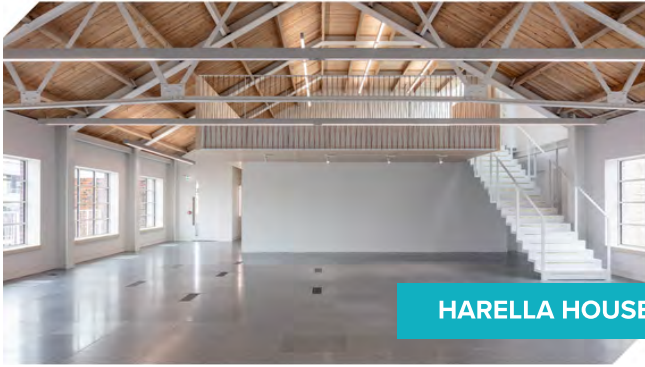
Driven by innovation and characterised by transparency, personality and fit out expertise, London-based BW brings a commitment to delivering defect-free fit out and refurbishment projects to London and the south of England.

[wearebw.com](https://www.wearebw.com)

[MEET THE TEAM](#)

BW
WORKPLACE EXPERTS

EXPERTISE



HARELLA HOUSE

Office Refurb (CAT A)

From 1930s factory buildings to Grade II listed mix-use developments, our team transforms spaces for our landlord, developer, and asset management clients



SONY MUSIC

Office Fit Out (CAT B)

Every CAT B project is as unique and exciting as the company moving into it. BW ensures each final fit out does so much more than simply function.



SKYSCANNER

Design & Build

We handle everything – from workplace strategy and design to build and delivery, so you've got one expert team from start to finish.



LONDON BUSINESS SCHOOL

Campus Refurb

We use our knowledge and know-how to help refurbish lecture halls, seminar rooms, student unions and university spaces that'll help shape the next generation.

LATEST NEWS



THE HOSPITALITY TAKEOVER OF THE WORKPLACE



AI-DRIVEN ROBOTICS AND THE HUMAN FUTURE OF CONSTRUCTION

[READ MORE](#)

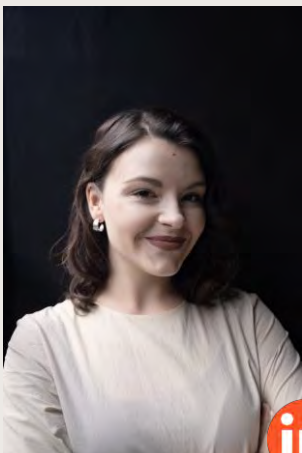
BW
WORKPLACE EXPERTS

FACT

We are an innovative, creative and service driven furniture consultancy and supplier.

Fact are a group of experts who think deeply about all aspects of the work we do, be that the correct product for the scheme or the environmental impact of our collaborations. It is a commitment to interrogate and challenge each decision we make whilst being the critical friend to our clients and partners.

For 'critical' we can also read essential, urgent and authentic. We've nailed our colours to the mast and are accountable for our actions.



LAURA OLSON

Project Coordinator & Visual Coms Manager



WILL BRADFORD

A&D Sales



MARIKA SAONARI

Account Manager



NICHOLAS PHILLIPS

Project Director

CASE STUDIES



LEWIS SILKIN

FACT were appointed to guide Lewis Silkin through product selection, specification, delivery and installation. Having never undertaken a full move, design and fit-out, the practice relied on our audit of existing furniture to identify items for reuse or a second life elsewhere. All new pieces were benchmarked against agreed sustainability criteria, helping the new office achieve BREEAM Excellent.

To address the client's unfamiliarity with the process, we created trial spaces to test behaviours and preferences, feeding results into workshops, trials and showroom visits. From the shortlist we supported HLW in finish selections, managing the budget throughout and negotiating savings. Despite landlord restrictions complicating logistics, the project was delivered on time.

BBC

Working with the BBC and Sheppard Robson is a privilege. The interior scheme was shaped around neurodiversity and sustainability, drawing mainly on UK-based manufacturers while also considering international suppliers with strong environmental credentials. The BBC is a complex environment. Strict security protocols limit access, requiring inductions and training, while installations are usually out of hours and the Newsroom poses particular challenges. Yet the collaboration is always rewarding.

The BBC values the people it works with, showing genuine curiosity about the individuals and businesses involved – from carpenters who craft guitars in their spare time to small enterprises committed to supporting their local communities. This human focus brings added meaning to each project.

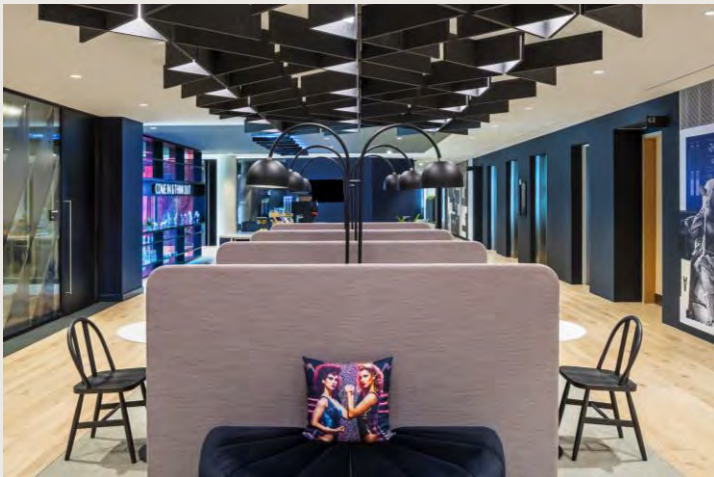


NETFLIX

Netflix approached FACT with the ambition of redefining the furnishings for their new HQ, aligning seamlessly with our Climate Theory initiative. Working with P&W and the client designer, we set sustainability criteria at the heart of decision-making – prioritising locally sourced, vintage and used furniture while maintaining strong design appeal and budget discipline.

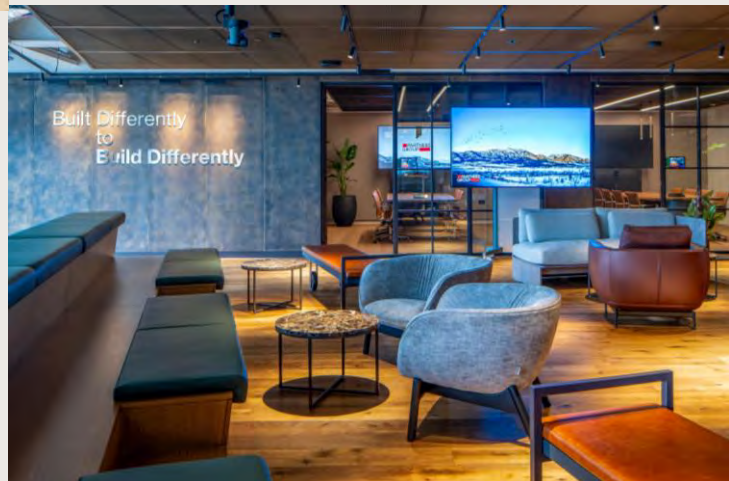
Over three months, we tested and reviewed samples, partnered with innovative suppliers, and toured vintage dealers across the south-east to secure and reserve suitable stock. A full furniture audit also allowed us to repurpose existing Netflix assets, either directly or through refurbishment by our upholstery partners.

Every new piece was scrutinised against strict sustainability standards and sourced from the UK wherever possible. In total, the project achieved an estimated carbon saving of nearly 69,000 kilograms.



PARTNERS GROUP

FACT collaborated closely with the design team to develop detailed specifications for loose, bespoke meeting room and systems furniture. We carefully selected products, materials, and colours to create distinct moods for different areas within the workspace. This thorough approach ensured that every element aligned with the overall design vision, ultimately resulting in a dynamic, vibrant, and community-focused workplace. Our choices contributed to an environment that fosters energy and a sense of belonging among employees. We also worked to balance innovation with practicality, ensuring that the furniture not only reflected the design ambition but also supported day-to-day functionality. Sustainability and durability were key considerations throughout the process, with an emphasis on long-term value. Our role included budget management, for which we worked alongside the QS to meet all project requirements without compromise.



Tango Workplace

The unified workplace management suite with **native occupancy intelligence**



The Workplace Suite



Occupancy

Leverage reliable, accurate data from your existing networks or other sources to understand how your space is used by employees.



Space

Plan, monitor, analyze, and orchestrate your space. Integrate all your data to help you reduce real estate costs and improve employee productivity.



Reserve

Improve access to shared office resources with a comprehensive reservation system that accounts for all types of reservable spaces and assets.



Visitor

Register, track, and report on everyone coming into your facilities with a cutting-edge visitor management solution.

Tango Intelligence Platform

One source of truth • Tango AI • Real-time insights
Seamless integration • Geospatial visualization

Powered by Tango AI

Use the power of Tango AI to generate insights, automate space planning tasks, improve data accuracy, and reduce costly inefficiencies—so your team can move faster with confidence.

Comprehensive. And Flexible.

Everything you need to master both the art and science of the workplace—plus the flexibility to connect seamlessly with other Tango suites and solutions (or your existing tools) for even greater impact.

Our Suite. Your Impact.

Optimize your hybrid workplace

Cut long-term real estate costs

Improve employee engagement

Simplify access to resources



"The financial benefits are obvious. It is now easier to capitalize on opportunities that we were unaware existed.

In our European HQ, we reduced space by 10%, allowing us to save \$300,000 USD a year—without sacrificing our employees' experience.

Now imagine the portfolio-wide potential!"

Head of Global Real Estate,
Fortune 500 Insurance Company

Know with Tango. Act with Tango.

Gain insights, take action, and drive organizational impact

▶ Connect your existing sources of occupancy data or let Tango Workplace generate insights from the networks you already have in place.

▶ Analyze and understand the utilization, density, and availability of your spaces and buildings.

▶ Test scenarios, run simulations, assign spaces, and transform your workplace.

▶ Let people thrive in the hybrid work era with the tools they need to book resources, find their way, and welcome visitors.

▶ Say hello to the right balance between reduced costs and improved employee experience.

We Know. It Takes Two to Tango.

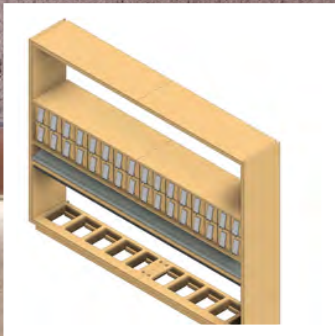
Our team has been in your shoes. We know that mastering the rhythm of workplace transformation requires more than just the right steps—it takes experience, intuition, and a deep understanding of how people move through spaces.

→ [Get in touch or request a demo](mailto:info@tangoanalytics.com)
info@tangoanalytics.com





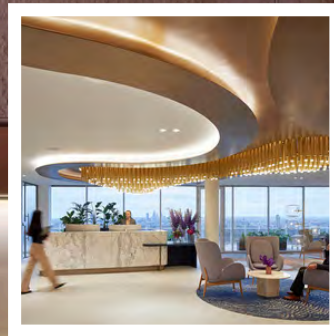
Design



Create



Install



Get In Touch

info@thorpes-joinery.com

01858 438 350

AN INCLUSIVE SERVICE

From initial **concept** to **completion**, we're here to ensure your project runs smoothly **every step of the way**.



Our pre-construction team are on hand for no-obligation advice, providing budgets, alternatives and VE suggestions across a range of disciplines.

Our design team can provide expert guidance and detailed technical drawings to support the design process.

Our experienced project team understand what makes a fit-out tick.

In our work we prioritise communication, collaboration and transparency whilst delivering a top-class joinery service that has been 75 years in the making.

More than just joinery.



Jamie Thorpe
Sales Director

07981 217 617

jamie.thorpe@thorpes-joinery.com



Rich Watts
Head of Projects

07960 029 637

richard.watts@thorpes-joinery.com



Chris Whittle
Head of Commercial

07891 217 634

chris.whittle@thorpes-joinery.com