

About Cundall

Cundall is a global, multi-disciplinary consultancy delivering sustainable engineering and design solutions.

Our locations

UK & Ireland

Belfast
Birmingham
Bristol
Edinburgh
Glasgow
London
Manchester
Newcastle

Asia

Bengaluru
Chennai
Hong Kong
Manila
Malaysia
Shanghai
Singapore

Australia

Adelaide
Brisbane
Melbourne
Perth
Sydney

Associated offices

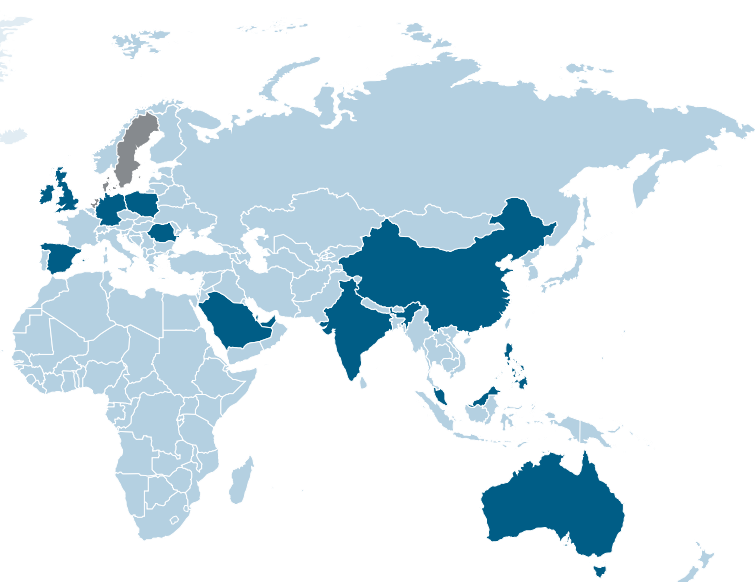
Denmark
Sweden
Netherlands

Europe

Bucharest
Dublin
Germany
Madrid
Warsaw
Wrocław

MENA

Doha
Dubai
Riyadh

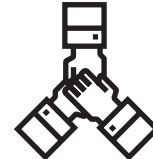


We operate across 29 locations with over 1200 consulting engineers and designers who are empowered to act with flexibility and agility in response to local market conditions. The quality of our people is one of our biggest strengths.



29

Locations globally



1200

People worldwide



1976

Established

Global corporate real estate

Our global corporate real estate sector (GCRES) is structured around delivering multi-disciplinary, occupier focused projects and consultancy for our clients wherever they need it.

We recognise that the occupier market is changing fast and that's why our team remains focused on delivering the best in class sustainable and innovative office spaces and supporting our clients to achieve their project aspirations, aligned with their values worldwide.



50+

Countries projects delivered in



500+

Awards won



2030

All projects will meet our zero carbon design criteria

Meet our London team



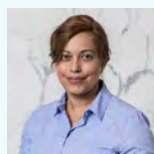
Conrad Stone
GCRES Lead,
Associate
Director



Kevin Hayes
Partner,
Building
services



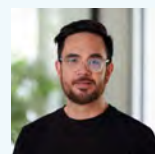
Dan Bennet
Director,
Building
automations



Kavita Kumari
Associate
Director,
Sustainability



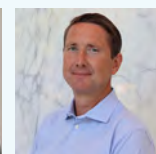
Leigh Harper
Associate
Director,
Security



Colin O'Connor
Associate,
Acoustics



Natalia Duffy
Associate,
Lighting



Steven Smith
Associate,
Building
services



Ellie Relf
Senior Engineer,
Building
services

Case studies



© Billy Bolton, MoreySmith, Sony Music



More information on
Sony Music



© Raddy Scott Photography



More information on
Cundall Edinburgh



© Chris Goldstraw



More information on
Schneider Electric

Sony Music London, United Kingdom

Sony conducted extensive consultations with staff as to their requirements of the new space, and the resulting design offers a flexible and healthy work environment, combining social and collaborative areas with quiet, private areas.

Already a hub for creative, tech and music businesses, Sony Music's £40m HQ stands out against other projects in the area. By opting to take the space from shell and core, the scheme had substantial flexibility, allowing for the creation of internal feature stairs and atria across all seven floors.

Cundall Edinburgh Edinburgh, United Kingdom

Situated in a UNESCO World Heritage site, the fit-out of Cundall's Edinburgh office focused on the circular economy and prioritised the health and wellbeing of our people. Our building services and sustainability teams set new standards for office spaces by showcasing how putting carbon reduction at the forefront can enhance design.

Working alongside SPACE Solutions, we focused on the circular economy and brought many second-hand pieces to the office. The team ensured that items such as desks and chairs were cohesive, practical and met our high standards for the workplace.

Schneider Electric Dubai, Middle East

Schneider Electric's new 10,000m² flagship office in Dubai, known as 'The NEST,' brings together a dynamic workplace, hands-on training facilities, and the company's first Innovation Hub in the UAE.

With a Platinum SmartScore certification already achieved, and LEED ID+C Platinum and WELL Equity certifications in progress, The NEST is set to become a regional benchmark for smart, sustainable, and inclusive spaces.

FSL GROUP



FSL Group, part of MARIS LLP, is a trusted team of workplace design and build specialists, furniture consultants, and customer service experts. Since our founding in 1977, we have built a reputation for delivering high-quality, reliable solutions that enhance the way people work and interact.

Our commitment to excellence is underpinned by a Dun & Bradstreet "Number 1" credit rating and recognition as the Sunday Times' 14th Best Small Company to Work For in the UK.

Combining decades of expertise with a people first approach, FSL Group consistently creates inspiring, functional, and enduring environments.



Luke Winter
Director
07809 367004
l.winter@fsl-group.co.uk



Ryan Porter
Creative Director
07712 715049
r.porter@fsl-group.co.uk



Tom Sarl
Business Development
07904 586661
t.sarl@fsl-group.co.uk

// Designing and building inspiring workplaces, where innovation, craftsmanship and service excellence combine to create spaces that truly perform //



Delaware North

Delaware North commissioned the transformation of two adjacent 20-person boxes at Wembley Stadium into a single, seamless 40-person hospitality suite. Delivered in just nine weeks, the project showcased an exceptional level of high-end design and craftsmanship.

The new space combines premium finishes, bespoke joinery, and state-of-the-art facilities to create an elevated guest experience befitting one of the world's most iconic venues.

Every detail was carefully considered to provide both intimacy and flexibility, with enhanced sightlines to the pitch and a refined atmosphere for entertaining. The result sets a new benchmark for luxury hospitality at Wembley.



Nine Elms Park

At Nine Elms Park, Battersea, we delivered a landmark amenities hub spanning two residential blocks within the wider Nine Elms development. Working in close collaboration with Tigg & Coll Architects, we brought their vision to life with a seamless integration of reception, co-working, gym, and resident amenity spaces.

The project combined contemporary design with practical functionality, ensuring the spaces foster community while reflecting the prestige of the development. High-quality finishes, tailored lighting, and carefully curated layouts create a welcoming environment that enhances everyday living. The result is a versatile, vibrant hub at the heart of Nine Elms Park.



Fortescue Zero

Fortescue WAE relocated their battery build and development centre to Kidlington, Oxford, creating a pioneering facility defined by innovative design inspired by the flow and movement of electricity. The space reflects both technological ambition and environmental responsibility, with sustainability central to every decision.

Office finishes and materials were carefully selected for their eco-friendly credentials, complemented by energy-efficient systems to reduce long-term impact.

This forward-thinking approach underscores Fortescue's commitment to minimising its ecological footprint while supporting the development of cutting-edge battery technology. The result is a state-of-the-art centre blending design excellence with a deep respect for the planet.



Major UK Cancer Charity
London

» At Optima, we help shape world-class workspaces

We have local and international manufacturing facilities and **over 30 years' experience in the glass partitioning industry.** Over the years, we have been trusted by leading global brands such as Virgin Money, PepsiCo, Adobe, and Warner Bros, as well as landmark projects in world-renowned buildings. This reflects the confidence placed in our expertise.

We pride ourselves on offering exceptional service and beautifully designed glass partitions and doors that exude quality in every region we operate in. **We are dedicated to helping our clients create effective and innovative workspaces in some of the world's most iconic buildings.**



Networking is such an important part of our industry. It's not just about exchanging business cards - **it's about building meaningful, long-term relationships that help us grow both personally and professionally.**

These connections create opportunities for mentorship, professional advice, and encouragement, while also reinforcing our confidence and sense of community.

By coming together and sharing ideas, we gain valuable insights into emerging trends, best practices, and the challenges we face as an industry. **As a proud sponsor of this event, I'm excited to support a forum where these conversations can spark collaboration, innovation, and opportunities for us all.** I look forward to connecting with many of you there.

Dan Fuller
Sales Manager
Optima Major Works



The Global Association for
Corporate Real Estate





› Hydro CIRCAL®

The low carbon aluminium

We now manufacture all our premium glass partitions and doors using Hydro CIRCAL®, a **certified low-carbon aluminium made with at least 75% post-consumer scrap** - resulting in one of the lowest embodied-carbon footprints currently available.

This innovation not only aligns with our commitment to sustainability and the circular economy but also maintains

the high-quality performance, acoustic performance, and design flexibility we're known for. By transitioning from traditional aluminium to Hydro CIRCAL®, we've significantly **reduced our environmental impact while delivering industry-leading glass partition solutions.**

www.optimasystems.com

Optima

proAV[®]

Your Global Technology Specialist

About proAV

proAV is a global leader in delivering workplace technology solutions. From meeting and collaboration spaces to enterprise-scale deployments, we bridge people and technology to transform how organisations connect, collaborate and thrive.

Our clients include leading global corporates, financial institutions, universities, and public sector organisations who trust us to deliver innovative, future-ready spaces.

Learn more at: proav.com

Our Services



Audio & Visual



Broadcast



Event Management



Managed Onsite Services



Mark Hazell
Sales Director



Karen Marsh
Head of Business Development



Jackson Jones
Business Development Manager



Chris Gledhill
Senior Business Manager



Steve Giardina
Senior Business Manager



Damien Massarella
Business Director

proActiv[®]

proActiv is a scalable service framework from proAV, designed to ensure your AV systems operate smoothly, securely, and sustainably across estates of any size or complexity. Built for today's workplace and tomorrow's challenges, proActiv delivers actionable insights and the service excellence modern organisations require.

