

CORENET YOUNG LEADERS NEWS UPDATE



OUR NEXT EVENT... CORENET SPRING SOCIAL



[CLICK HERE](#)

This event is kindly sponsored by

workstation



QUALITY WITHOUT COMPROMISE



GREENWOODS

gleeds

FANCY A GAME OF BOULES WHILE MINGLING WITH OUR INDUSTRY'S YOUNG LEADERS?

This Thursday (8th May) we are hosting our annual spring social at Boule Bar in Waterloo.

Set to be biggest social to date, we will be welcoming 150 young leaders to network in a fun and comfortable environment.

SAVE THE DATE

WEDNESDAY 23RD JULY - OUR ANNUAL WELLNESS EVENT



Due to popular demand we are bringing back our 'networking netball' event this July. This will be our second year and we will be increasing our matches across three courts! This will allow more teams to take part! This event is mixed teams, aimed at all levels for some competitive fun! Following the matches we will celebrate with an awards ceremony and much needed refreshments. **Tickets will be online soon**, so keep your eyes peeled and start stretching as its game on!

WEDNESDAY 24th SEPTEMBER - OUR SKILLS WORKSHOPS RETURNS



Join us at CBRE's Henrietta House our second Skills Workshop, The power of impactful networking! We all network, but is it impactful? This workshop will teach the skills necessary to make the most out of all networking opportunities by ensuring you're having meaningful conversations that lead to opportunity.

These are industry-leading workshops focused on upskilling the next generation. These workshops will focus on teaching the commercial skills needed to accelerate their careers, improve their communication skills, and enhance their ability to network effectively both internally and externally.

WIDER CHAPTER UPCOMING EVENTS

CORENET SUMMER PARTY

Is the CoreNet Summer Party on 19th June in your diary?

Join us for an evening inspired by the curious wonders of nature. It's a celebration of the season, our community, and the connections that shape our industry. The Summer Party is our biggest event of the year and a highlight on the CoreNet calendar.

The logo for 'INNOVATE to THRIVE' features the word 'INNOVATE' in large, bold, blue letters. Below it, the word 'to' is in a white circle, and 'THRIVE' is in large, bold, blue letters. There are colorful icons: a rocket, a gear, and a leaf.

Pioneering Innovation, Building a Strong Future for Corporate Real Estate

[CLICK HERE](#)

CORENET EMEA SUMMIT IN AMSTERDAM

8th - 10th September 2025 CoreNet Global Summit - EMEA will focus on pioneering innovation and building a strong future in the corporate real estate (CRE) profession.

Innovation in CRE is about more than embracing new technologies—it is about reimagining workspaces, optimizing portfolios, driving sustainability, and fostering inclusivity.



[CLICK HERE](#)

UK YOUNG LEADER OF THE YEAR

RECOGNISING RISING STARS IN THE INDUSTRY

CoreNet UK Chapter Awards – Submissions Now Open!

Earn recognition from your company and peers through the CoreNet UK Chapter Awards, celebrating innovation and excellence in the corporate real estate profession.

This year's prize is exceptional:

Award winners will receive a fully paid trip to the CoreNet Global North American Summit from 27–29 October, including flights, accommodation, and event registration.

We're also proud to welcome a panel of industry-leading judges, who will not only select this year's winners but also provide Mentorship to the Young Leader of the Year in preparation for the global stage.

Winners will be revealed at the UK Summer Party on 19th June, and will go on to represent the UK as nominees at the Global Awards in November.

[Apply by 2nd June - Click Here!](#)

2025 CORENET AWARDS JUDGES



CLAUDIA BASTIANI
HEAD OF
WORKPLACE
LEGAL & GENERAL



JAMES RAWDON-MOGG
HEAD OF ENTERPRISE CLIENT
SOLUTIONS
COLLIERS



MARA CUMMINGS
SENIOR VICE
PRESIDENT
WARNER BROS.
DISCOVERY



SALLY MARSHALL
DIRECTOR
TURNER & TOWNSEND



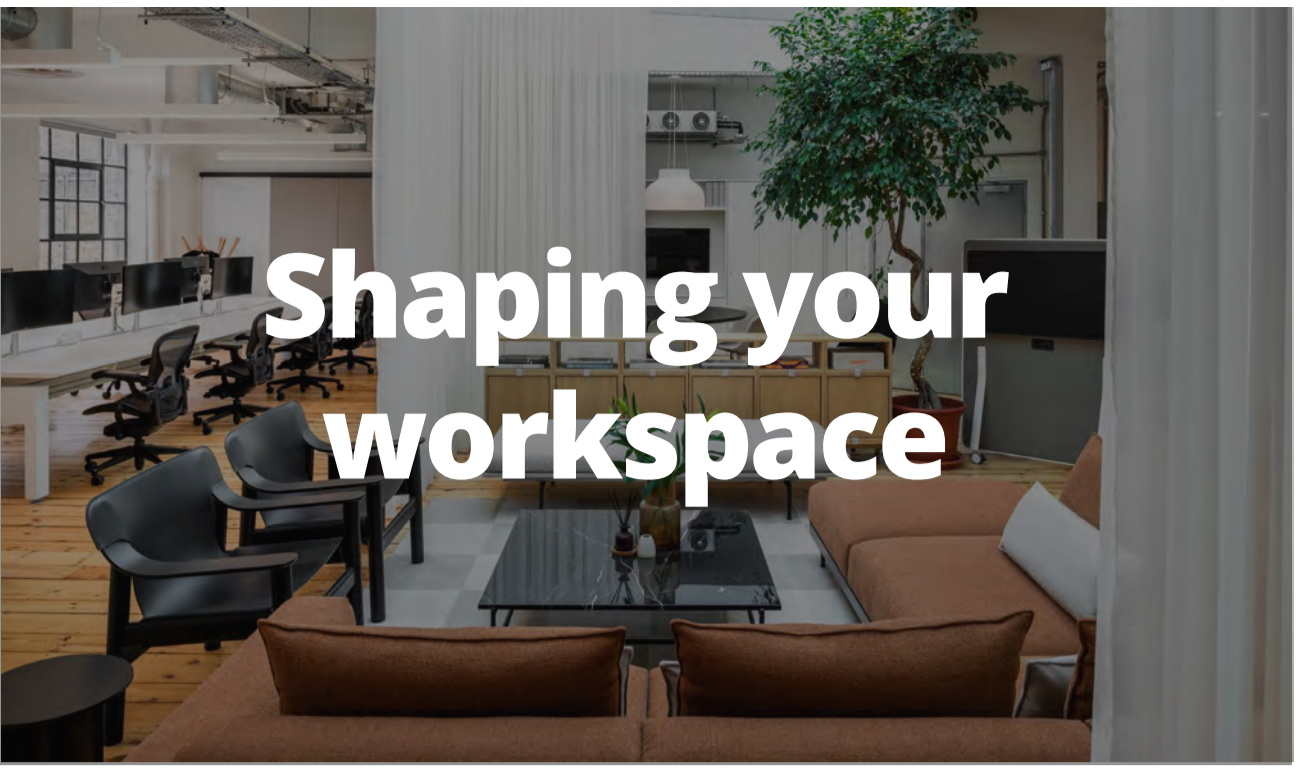
LUCY MYLES
ASSOCIATE DIRECTOR
TP BENNETT

FOLLOW US FOR MORE UPDATES

**A BIG THANK YOU TO OUR SPRING SOCIAL
SPONSORS.**

READ MORE ABOUT THEM:

workstation



Shaping your workspace

Workstation, proud sponsor of the CoreNet Young Leaders Spring Social.

We're Workstation, a furniture consultancy that brings individual design pieces together to shape spaces that spark creativity. Since 2001, we've collaborated with visionary clients to deliver design-led solutions that redefine how people work.

Our Process

As an innovative workplace consultancy and furniture specialist, we create environments that enhance comfort, boost productivity and reflect your company culture. Through ergonomic, design-led furniture solutions built around your team's needs, we deliver workspaces that perform seamlessly and leave a lasting impression.



Strategic



With a trusted network of 400+ vendors across the UK and Europe, our procurement team secures the best solutions by optimising lead times, budgets, and risks without compromising on quality or sustainability.

Sustainable

We influence sustainable choices by sourcing low-impact materials, prioritising trusted certifications, and tracking our carbon footprint with Planet Mark as we aim to exceed government targets and reach net zero by 2040.

Social Value

By prioritising social value, we help create ethical, high-impact environments that drive lasting change. In partnership with the Social Value Portal and powered by the independent TOM System, we connect clients with responsible manufacturers because a truly transformative workplace benefits everyone.



Workstation CoreNet Young Leaders



Jack Nicholls
Senior Workplace Consultant



Yasmin Howell
Workplace Consultant



Ethan Rayer
New Business Development



Perdy Partner
Senior Project Manager

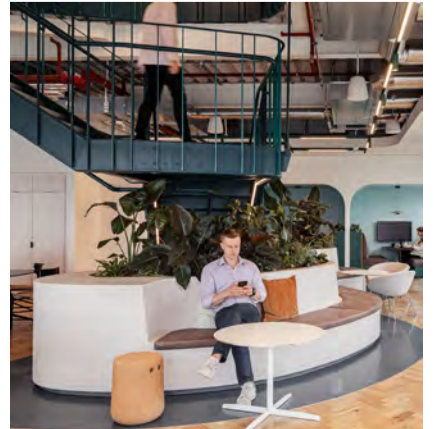


Thomas Mansfield
Senior Designer



Emma Garret
Senior Workplace Consultant

Spaces that inspire



GREENWOODS



A refreshing approach to Real Estate

We're property lawyers who think a little more creatively. We acknowledge that the law bit is kind of dull; we prefer working with Landlords and Tenants to bring plans to life; providing imaginative solutions, and actually giving you advice (as opposed to telling you what you already know).

We're nice people, we're technically smart and commercially savvy.

No matter how good our website is, looking at our work and the clients we advise gives a much better insight into our team and our approach. So, to help encourage you to talk to us, here are some case studies and clients we're acting for.

What's great is that all are very happy for us to showcase the details of the work we've done or that we work with them. And they've said some very lovely things about the experience of working with us. Check out the logos and testimonials below.

You'll appreciate that there are many more clients where it's not appropriate for us to mention or to detail the advice given but where we're advising on significant and complex matters which are often time sensitive.

Persuaded yet? We hope so, but if not, Alex is always up for a coffee to talk you through the team's approach in person.

Who we are

Lawyers who thrive on giving clients more than they expect and simply get things done.

Meet Alex

Alex Hutchings, Partner, Head of Real Estate

Alex is proactive, knowledgeable and easy to work with.

Every commercial property is different; whether you want to run a restaurant group, open a cinema or regenerate a town centre, Alex works with you to understand what's most important to you and negotiate the best outcome for your business.

Alex and the Real Estate team look to protect your investment and provide peace of mind that you can do what you want to do.

He builds lasting relationships with clients and works in partnership with them to see their vision come to fruition.

+44 (0)20 7504 1162
amhutchings@greenwoods.co.uk



Working with Alex

"As we've expanded the retail side of our business with multiple new properties Alex has been by our side every step of the way providing perfect personalised legal support. We couldn't be happier with the service we've received from Alex and the team."

Tom Bott, Co-founder
Signature Brew

"Alex has worked with us on a good number of projects now and has been excellent. He always understands our requirements perfectly, helps us get exactly what we need and does so in an efficient and timely manner. I recommend him to anyone and everyone who asks."

Also, he is a legend."

Dan Joines

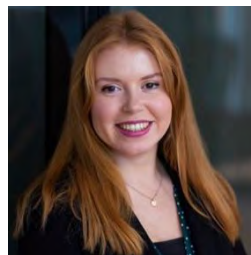
"Alex gives a personalised service and makes me feel comfortable to ask, sometimes uneducated questions to help guide me to the best commercial outcome. Alex provides a swift and professional service that helps to make the daunting process of negotiating commercial leases enjoyable. I have worked with Alex on several projects to date and will continue to do so."

Chelsea Finch, Creator &
Director District Coffee/Where.s
Fred.s

Meet the Real Estate team



Sona Vig
Managing Associate
+44 (0)20 3691 2098
skvig@greenwoods.co.uk



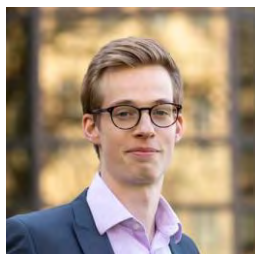
Jennifer Yates
Associate
+44 (0)20 3691 2099
jyates@greenwoods.co.uk



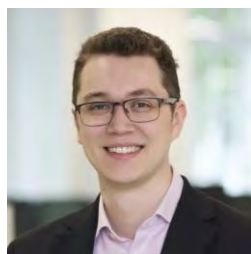
Harry Rudolf
Senior Associate
+44 (0)20 3691 2097
hprudolf@greenwoods.co.uk



Amy Lynch
Senior Paralegal
+44 (0)1733 887 640
aelynch@greenwoods.co.uk



Myles Shearman
Associate
+44 (0)20 3691 2067
mtshearman@greenwoods.co.uk



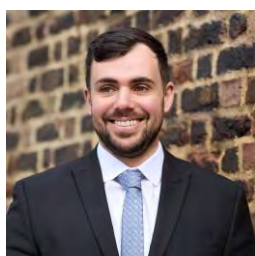
Anthony Lauderdale
Paralegal
+44 (0)7802 249 630
alauderdale@greenwoods.co.uk



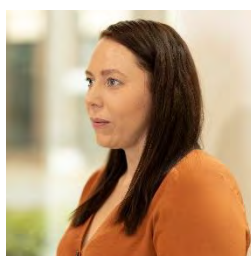
Chi Collins

Head of Property Disputes and Partner
+44 (0)20 3691 2092
ccollins@greenwoods.co.uk

Chi studied at the LSE and has practised in her field for over 20 years. She joined Greenwoods in July 2020 from a firm in Mayfair and has continued to grow the department since her arrival. She works closely with the Real Estate team in order to provide a fully rounded service to the firm's clients and is always on hand if any advice is necessary, ranging from simply giving a client options, or dealing with court proceedings.



Harry Panayiotou
Associate
+44 (0)20 7504 1172
hpanayiotou@greenwoods.co.uk



Amy Carpenter
Managing Associate
+44 (0)1733 887746
arcarpenter@greenwoods.co.uk

Recent Relevant Work

Advising **national motor dealership** in relation to all aspects of its significant real estate holdings in relation to acquisitions and disposals (both straightforward real estate transactions and as part of corporate deals), liaising with its corporate lawyers and in-house counsel.



Acting for a **large commercial landlord** on all aspects of its portfolio management, including granting new leases of multilet properties.



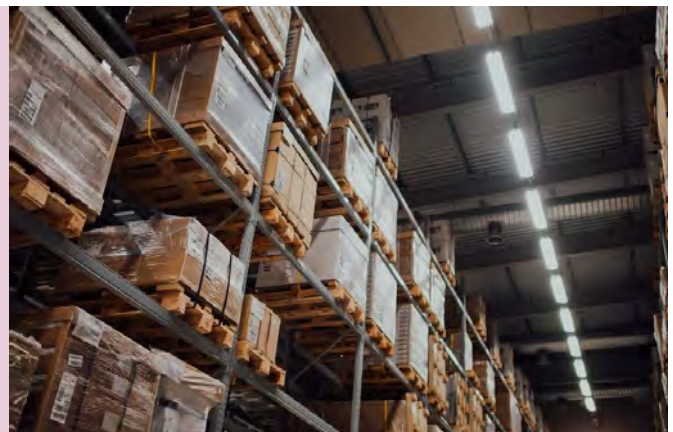
Advising a PLC **regeneration company** on all property management aspects of five shopping centres in its commercial portfolio including acquisition of additional parcels of land, lettings, day to day management enquiries, and disposals whether by private treaty or auction sale including any associated rights of first refusal the qualifying residential tenants may have had.



Advising a developer on the acquisition of a **brown field development site in Greater London**, working with their planning team in connection with the s.106 agreements through to disposal of the individual plots and reversion to the common parts.



Advising a Cambridge based developer on the **procurement of works including a number of warehouses at a business park purchased by the developer in Lewisham**, including advising on the design and build contract and associated contracts and appointments. On the discovery of contaminated land and the disposal of this by the contractor, which was in breach of contract, briefing and taking advice from an environmental consult and Counsel, advising the client and proceeding to resolve the issue without Court action or adjudication.



Acting for a UK government quango on various aspects concerning **the construction of a new village in Cambridgeshire including archaeology, demolition, and infrastructure contracts**. Interviewing tenderers and evaluating the tenders in regard to the amendments to the infrastructure contract (NEC3) and at the face-to-face interviews.



Get in touch



We are always pleased to talk informally about issues you face and how we can help.

We know how important it is to get out to meet our clients at the heart of their operations. And we're not afraid to get our shoes dirty!

If an informal meeting on a piece of work sounds a good way forward to you, pick up the phone:

Alex Hutchings
+44 (0)20 7504 1162
amhutchings@greenwoods.co.uk

www.greenwoods.co.uk

enquiries@greenwoods.co.uk

Keeping up to date

Sign up to 'The Property Edit' email updates – our no waffle industry insights from the Real Estate team.

Subscribe via our website at www.greenwoods.co.uk/signup

London

Queens House
55-56 Lincoln's Inn Fields
London WC2A 3LJ
+44(0)20 7242 0631

Cambridge

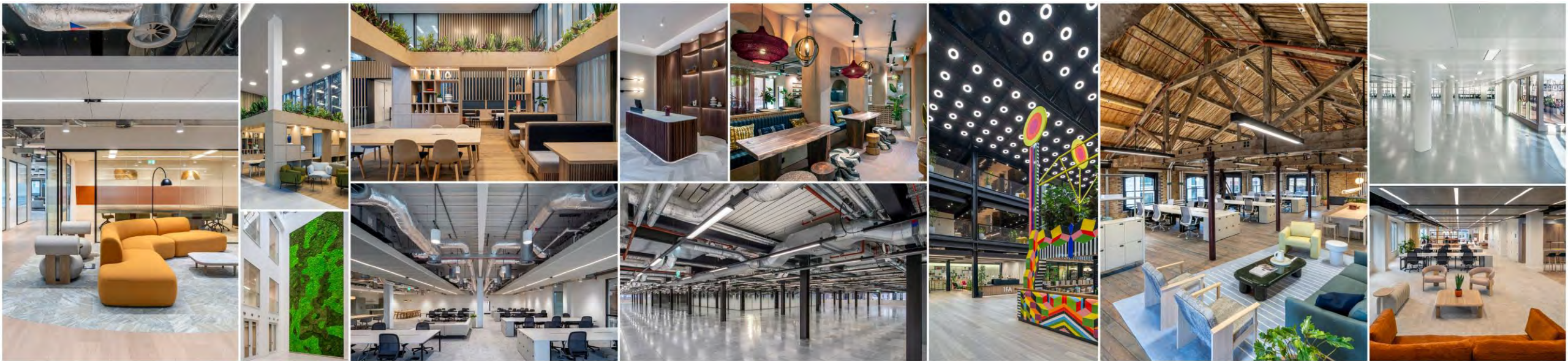
Compass House
Vision Park
Cambridge CB24 9AD
+44 (0)1223 785300

Peterborough

Westpoint
Lynch Wood
Peterborough PE2 6FZ
+44 (0)1733 887700

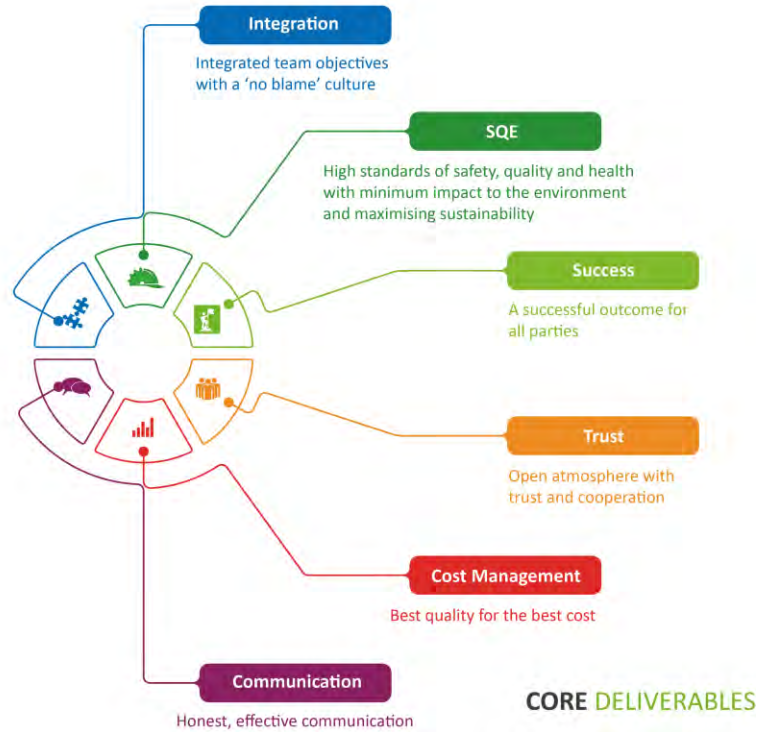
GREENWOODS

WE ARE AN OFFICE **FIT OUT** AND **REFURBISHMENT** SPECIALIST.



PROUDLY DELIVERING EXCELLENCE

QUALITY WITHOUT COMPROMISE.



We're proud of what we've achieved so far and look forward to expanding our impact in the years to come.

- Networking and Business Development Through Health Initiatives.
- £175K invested in young talent through our Apprenticeship Scheme.
- £250K of direct Charity fundraising for Fat Macy's, The Food Chain, Santa Run & our Christmas donations.
- Our Employee Volunteering Programme includes Volunteer time off, Employee donation matches & charity partnerships.
- An inclusive environment with 24% Female employment (and rising) and Mental health trained support.



Impeccable Health & Safety

With over a decade of incident-free delivery, QOB upholds an exceptional health and safety record. Our proactive, no-compromise approach ensures the safety of every person on site—every day.

Leaders in Sustainable Construction

Sustainability is embedded in everything we do. We've proudly delivered projects achieving *BREEAM Outstanding* and *NABERS 5-star* ratings, exceeding environmental targets and supporting our clients' ESG goals.



Specialists in Live Environments

80% of our projects are delivered in occupied buildings. Our team thrives in live environments, expertly managing logistics to avoid disruption and ensure seamless integration with existing operations.

Collaborative by Nature

At QOB, we believe great results come from strong partnerships. We work hand-in-hand with clients, consultants, and design teams to deliver projects that are on brief, on time, and on budget.

Trusted to Deliver Complex Projects

From heritage refurbishments to high-spec commercial fit outs, our diverse portfolio showcases our ability to meet technical challenges while delivering premium quality in every detail.



QUALITY WITHOUT COMPROMISE

OUR CORENET **NEXT GEN TEAM**

TEDDY DWYER



Asst. Project Surveyor

SAM BEADLE



Construction Manager

LIAM MURPHY



Contracts Manager

ROBBIE WILSON



Construction Manager

NIAMH JACKSON



Project Surveyor

DANIEL SARTORI



Project Surveyor



07710 829 084



07730 458 889



07732 390 636



07771 300 326



07961 683 143



07961 153 072

gleeds

CoreNet Young Leaders Spring Social

We're not just a construction consultancy, we're a catalyst for change

Since 1875, we've been bringing to life new ideas and big visions for the built environment. In today's fast-changing world, we're continually connecting people, places, ideas and possibilities to make every day another step towards a better future.

[gleeds.com](https://www.gleeds.com)

[X](#) [Instagram](#) [LinkedIn](#)



Joanna Bold
Executive Cost Manager



Connor Hudson
Cost Manager



Palbinder Tiwana
Senior Project Manager



Nick Walters
Assistant Cost Manager



Millie Smith
Project Manager



Ewan Finlay
Assistant Project Manager



Charles Bayly
Senior Cost Manager



Maxine Sowden
Senior Cost Manager



Eddie Eggers
Project Manager



Richard Golding
Associate Director

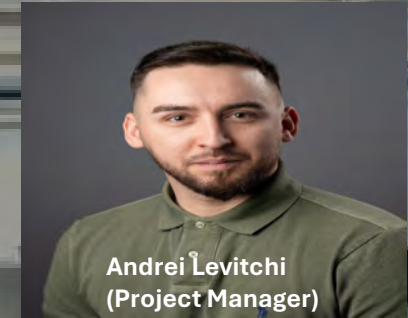
Trainor Stone & Tile



About Us

- Trainor stone and Tile is a family run business with offices in Belfast and London. Originally established in 2012 and rebranded in 2015 to Trainor Stone & Tile we have continued steady growth year on year. A double award-winning contractor we are dedicated to innovation and sustainability and a commitment to integrity and reliability.

Leadership Team



Recent Projects: Apollo Global



Recent
Projects:

Dechert



Recent Projects: Warner Bros





Contact Us:

- Trainor Stone & Tile Ltd
- Unit 1b Juno Way,
London, SE14 5RW

- Unit 19, Cromac Avenue,
Belfast, BT7 2JA.

- info@trainorstone.com
- 028 9521 0637

