

APRIL 2026

CORENET YOUNG LEADERS NEWS UPDATE



YOUNG LEADER AWARDS 2026

OPEN TO APPLY & NOMINATE

CoreNet UK Chapter proudly announces its 2026 Awards Programme, celebrating the very best in corporate real estate!

Among them, the Young Leader of the Year Award seeks to honour a rising professional who demonstrates exceptional dedication and enthusiasm to the CRE industry.

Winners will receive flights, accommodation and access to the North America Summit in Chicago!

APPLICATIONS CLOSE 8TH MAY - DON'T MISS OUT!

Key Dates:

- Entries Open: OPEN NOW!
- Entries Close: 8th May 2026
- Winners Announced: 4th June 2026 at the CoreNet UK Summer Party

APPLY NOW!



OPEN CALL FOR PANEL TOPICS, IDEAS AND BUILDING TOURS

Get in touch with
Rosy Watts - rosy.watts@tallinea.com
& Amreta Chana - amreta.chana@pwc.com



OUR UPCOMING EVENTS...



Young Leader Spring Social

Thursday 30th April 2026

18:00 - 23:00

Sixes London Bridge, 50 Bermondsey Street, SE1 3UD

What to expect:

- Peer-to-peer networking
- A fun, interactive icebreaker
- Food and drinks included

Thank you to our sponsors!

Keep scrolling to learn about each of them.



JOIN THE FUN
GET YOUR TICKET



Come to the spring social.
Be the first to hear about our secret...

Make sure you come to the
CoreNet YL Spring Social!

11:02 ✓

In my diary already

11:04

Good! We have a fun
announcement to tell
everyone so don't miss it!

11:15 ✓

I've bought my ticket - can't wait
to hear what it is...

11:19





UP COMING EVENTS

- Skills Workshop
June - TBC
- Networking Netball
23rd July 2026
- End of Summer Social
Sept /Oct 2026 - TBC



MEET THE MENTORS

Thank you to Greenwood's for sponsoring our very first 'Meet the Mentors' event.

The event brought together all mentees and mentors selected for the 2026 programme, offering a fantastic opportunity for everyone to meet not only their mentoring pair but also connect with the wider network.

[WATCH THE VIDEO](#)



THE BUDDY SCHEME

The CoreNet Buddy Scheme pairs new members with an existing CoreNet member ahead of in-person events, helping to create a welcoming and supportive introduction to the CoreNet community.

The scheme is designed to help new members feel confident, connected and included, offering an informal opportunity to ask questions, understand how events work, and build relationships before attending in person.



If you are a CoreNet member and would be interested, please get in contact with Rosy Watts
Rosy.Watts@italinea.com or Amreta Chana - amreta.chana@pwc.com

IN THE SPOTLIGHT

NAME: **SARAH KELLY**

ROLE: **BUSINESS DEVELOPMENT MANAGER &
CORENET UK YL PRESIDENT 2026**

COMPANY: **OVERBURY**

WHAT IS YOUR CURRENT ROLE AND WHAT ARE YOUR RESPONSIBILITIES?

My role is within the partnerships division at Overbury, managing relationships across our corporate accounts. My role focuses on understanding what our clients value in a delivery partner, supporting their project pipelines, and connecting them with our technical teams to ensure we deliver tailored, high-quality projects.

COULD YOU SHARE A BRIEF OVERVIEW OF YOUR CAREER PATH IN CORPORATE REAL ESTATE?

I didn't go to university, and early in my career, that was something I was quite conscious of. Over time, however, experience became far more important.

I started in construction recruitment at 21 and progressed to a senior consultant role. While recruitment often has a mixed reputation, it gave me an excellent foundation, teaching me proactivity, independence, and the importance of strong relationships.

I was often told my strengths lay in business development and client relationships, and that ultimately led me to transition into one of my clients. Joining Overbury had always been a goal; it just happened sooner than expected, and 4 years have flown by!

WHAT INSPIRED YOU TO TAKE ON THE ROLE OF PRESIDENT FOR CORENET YOUNG LEADERS UK?

When I initially applied for the Vice President role, I had already been part of the Young Leaders committee for two and a half years, contributing to a range of events and seminars.

I felt my background in business development and passion for marketing could add real value to CoreNet, helping to grow the Young Leaders agenda, by increasing membership, and support sponsorship initiatives. At the same time, I was keen to develop my own skill set, particularly in leadership, and gain experience within a global non-profit organisation.

Now 4 years on, as President, my focus has been on enhancing an already strong annual programme without overextending the team, prioritising quality over quantity. Key initiatives include expanding our mentorship scheme, which has seen its largest intake in 2026, launching our first "Meet the Mentors" event, growing membership through stronger event marketing and occupier engagement, and introducing a new WhatsApp community launching in April.

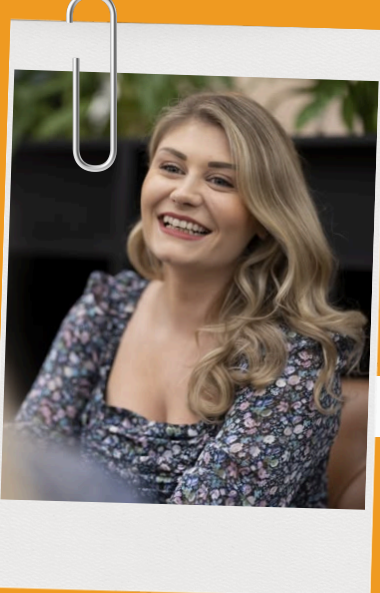
WHAT DO YOU SEE AS THE MOST SIGNIFICANT CHALLENGE AND OPPORTUNITY FOR YOU PERSONALLY IN THIS LEADERSHIP ROLE?

One of the biggest challenges has been learning to delegate and let go of control. As someone who is naturally enthusiastic and inclined to say yes, I've had to be mindful of not overloading our committee, especially as everyone is volunteering their time alongside full-time roles.

Balancing expectations, setting clear responsibilities, and respecting people's time have been key. At the same time, this has been a valuable opportunity to develop my leadership and communication skills.

HOW DOES CORENET YOUNG LEADERS UK SUPPORT CAREER DEVELOPMENT AND GROWTH?

CoreNet Young Leaders is fantastic for building a strong industry network, but it also offers excellent learning and development opportunities. Alongside larger social events, there is a wide range of seminars and panel discussions across the UK chapter's annual programme, all of which are accessible to Young Leaders.



WHAT ARE SOME OF THE MOST IMPACTFUL EVENTS OR INITIATIVES YOU'VE HOSTED OR PLAN TO HOST THIS YEAR?

I'm particularly passionate about our Young Leaders Skills Workshop, which focuses on non-linear career paths and overcoming setbacks, something many of us can relate to.

I also have a soft spot for our Wellness Event – Networking Netball, which started three years ago and has become a unique and meaningful way to combine networking with team-building.

From the wider chapter programme, "Future Focus" is a standout, and I'm excited to see how this conference continues to develop.

WHAT SKILLS ARE BECOMING INCREASINGLY CRUCIAL FOR YOUNG PROFESSIONALS?

I may be slightly biased, but I believe business development skills are a critical skill set. Most industry leaders dedicate at least 10–20% of their role to building and maintaining client relationships. Beyond that, having a proactive approach to your career is essential, setting clear objectives, identifying how to achieve them, and understanding who can support you along the way.

WHAT ADVICE WOULD YOU GIVE TO SOMEONE LOOKING TO GET MORE INVOLVED IN CORENET YOUNG LEADERS?

At the start of the year, we asked our committee what they wanted to gain from their involvement and what skills they could bring. I think that's a great place to start.

Volunteering is one of the best ways to maximise your experience. While it requires commitment, it's incredibly rewarding. I've seen tangible benefits both personally and for Overbury through my involvement.

What are the biggest benefits of being a CoreNet Young Leaders UK member?

One of the biggest advantages is the peer-to-peer community. Members are at a similar stage in their careers, which creates a supportive environment where you grow together, and those relationships often last throughout your career.

What's one piece of career advice you wish you had received when starting out?

Don't compare your journey to others, focus on building your own path and playing to your strengths.

What trends are impacting the corporate real estate sector in the UK right now?

AI is certainly a major talking point, particularly how it is shaping industries with large real estate footprints and how it can enhance, rather than hinder, our roles. It's an evolving space, and there's still a lot to understand about what's genuinely impactful versus what's hype.

What advice would you give to young professionals navigating today's CRE market?

Identify your strengths and lean into them. Be aware of your weaknesses. No one is perfect, but it's your strengths that define your value.

What long-term impact do you hope to have after your presidency?

I would be proud to know I helped even a small number of people build confidence, whether in networking or public speaking. It's incredibly rewarding when someone shares that they pushed themselves out of their comfort zone and are glad they did.

FOLLOW US FOR MORE UPDATES



corenetglobal.connectedcommunity.org



[corenetyluk](https://www.instagram.com/corenetyluk)



ukylpresident@corenetglobal.org.uk



[CoreNet Global UK Chapter](#)



Turner & Townsend

We transform together.

In the fast-changing workplace environment, we're helping clients respond to new trends, emerging technology and economic headwinds.

Our company in numbers

247

offices delivering consistent quality worldwide

£1.5bn

annual turnover supporting clients' success

22k+

people working as one global team

115

nationalities bringing diverse perspectives and ideas

FACT

We are an innovative, creative and service driven furniture consultancy and supplier. FACT are a group of experts who think deeply about all aspects of the work we do, be that the correct product for the scheme or the environmental impact of our collaborations. It is a commitment to interrogate and challenge each decision we make whilst being the critical friend to our clients and partners. For 'critical' we can also read essential, urgent and authentic.

We've nailed our colours to the mast and are accountable for our actions.



LAURA OLSON

Project Coordinator &
Visual Coms Manager



WILL BRADFORD

FF&E Consultant



MARIKA SAONARI

Senior
FF&E/Designer
Consultant



NICHOLAS PHILLIPS

Director

CASE STUDIES



LEWIS SILKIN

FACT were appointed to guide Lewis Silkin through product selection, specification, delivery and installation. Having never undertaken a full move, design and fit-out, the practice relied on our audit of existing furniture to identify items for reuse or a second life elsewhere. All new pieces were benchmarked against agreed sustainability criteria, helping the new office achieve BREEAM Excellent.

To address the client's unfamiliarity with the process, we created trial spaces to test behaviours and preferences, feeding results into workshops, trials and showroom visits. From the shortlist we supported HLW in finish selections, managing the budget throughout and negotiating savings. Despite landlord restrictions complicating logistics, the project was delivered on time.

BBC UK

Working with the BBC and Sheppard Robson is a privilege. The interior scheme was shaped around neurodiversity and sustainability, drawing mainly on UK-based manufacturers while also considering international suppliers with strong environmental credentials. The BBC is a complex environment. Strict security protocols limit access, requiring inductions and training, while installations are usually out of hours and the Newsroom poses particular challenges. Yet the collaboration is always rewarding.

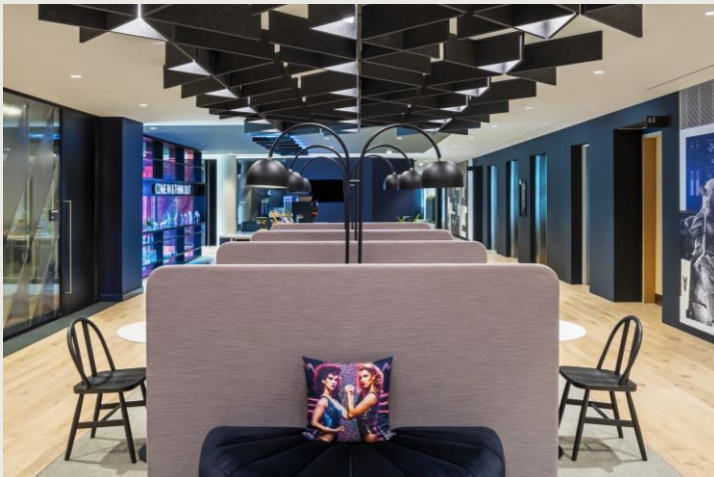
The BBC values the people it works with, showing genuine curiosity about the individuals and businesses involved – from carpenters who craft guitars in their spare time to small enterprises committed to supporting their local communities. This human focus brings added meaning to each project.



NETFLIX

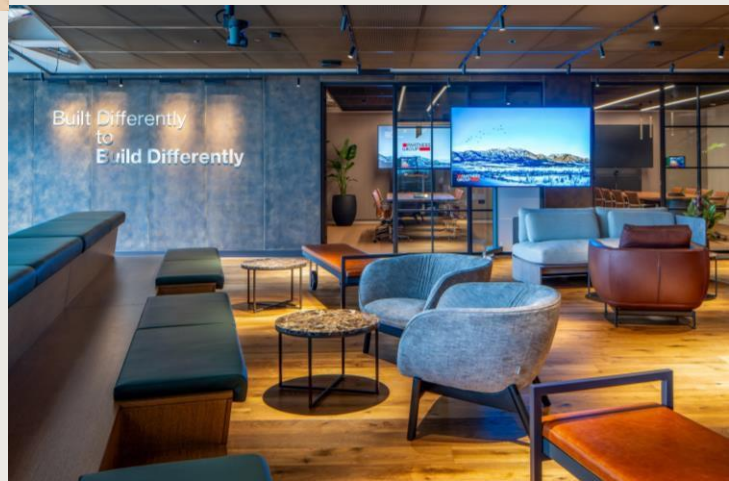
Netflix approached FACT with the ambition of redefining the furnishings for their new HQ, aligning seamlessly with our Climate Theory initiative. Working with P&W and the client designer, we set sustainability criteria at the heart of decision-making – prioritising locally sourced, vintage and used furniture while maintaining strong design appeal and budget discipline. Over three months, we tested and reviewed samples, partnered with innovative suppliers, and toured vintage dealers across the south-east to secure and reserve suitable stock. A full furniture audit also allowed us to repurpose existing Netflix assets, either directly or through refurbishment by our upholstery partners.

Every new piece was scrutinised against strict sustainability standards and sourced from the UK wherever possible. In total, the project achieved an estimated carbon saving of nearly 69,000 kilograms.



PARTNERS GROUP

FACT collaborated closely with the design team to develop detailed specifications for loose, bespoke meeting room and systems furniture. We carefully selected products, materials, and colours to create distinct moods for different areas within the workspace. This thorough approach ensured that every element aligned with the overall design vision, ultimately resulting in a dynamic, vibrant, and community-focused workplace. Our choices contributed to an environment that fosters energy and a sense of belonging among employees. We also worked to balance innovation with practicality, ensuring that the furniture not only reflected the design ambition but also supported day-to-day functionality. Sustainability and durability were key considerations throughout the process, with an emphasis on long-term value. Our role included budget management, for which we worked alongside the QS to meet all project requirements without compromise.





Introba is a global building engineering and consulting firm transforming the built environment through engineering, digital innovation, and sustainability leadership.

In the UK, we bring deep expertise in commercial workplace projects, partnering with developers and occupiers to deliver high-performance, adaptable office environments. By integrating strategy, engineering, and smart building technologies, we create workplaces that enhance user experience, improve building performance, and support long-term value and resilience.

Find our team at the spring social.



Caitlin Stead

Regional Project
Coordinator



Ceyda Davidson

Environmental
Design Engineer



Amy Ellis

Mechanical
Engineer



Rowan Mason

Business
Development
Manager



WE ARE AN OFFICE FIT OUT AND REFURBISHMENT SPECIALIST.

QOB Interiors is a financially secure, London-based fit-out specialist delivering high-quality Cat A and Cat B office projects through flexible design-and-build solutions, trusted for consistent delivery on time, on budget and to the highest standards.



“ **OUR ROLE IS SIMPLE**
> DELIVER HIGH QUALITY SPACE RELIABLY & REMAIN A SAFE PAIR OF HANDS
OUR CLIENTS CAN TRUST. ”

Steven Argent- Managing Director

THE QOB TEAM WHO WILL BE SEEING YOU THERE!



NIAMH JACKSON
Project Surveyor



NUALA QUILL
Finance Assistant

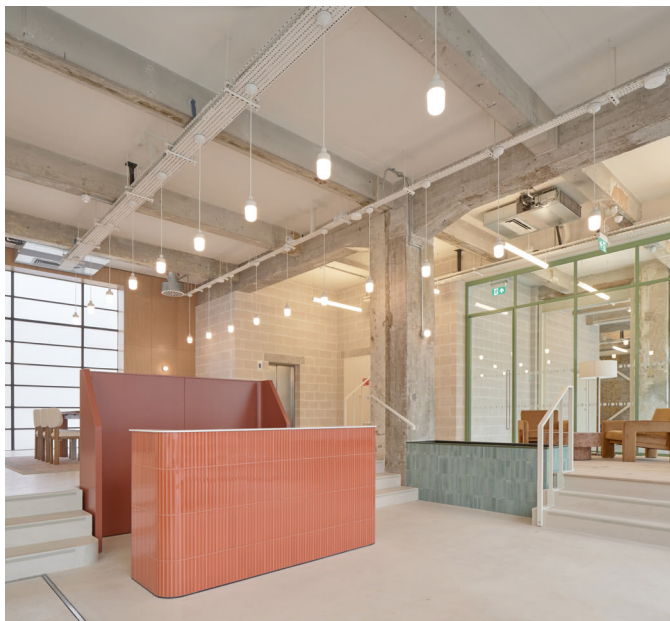


EMILY DOWN
Construction Manager

BRITISH LAND NORTON FOLGATE

A richly layered workplace transformation that fuses heritage, craftsmanship and smart technology to create inspiring, future-focused workspaces.

£12.5M | 84,000 SQ FT



RAILPEN 101 BAYHAM STREET

A technically complex structural refurbishment transforming 101 Bayham Street into a compliant and future-ready commercial building with enhanced performance, flexibility and façade quality.

£7.5M | 35,000 SQ FT

FRESHWATER / HIGHDORN 9 CAVENDISH SQUARE

A future-ready, highly sustainable office refurbishment that balances historic character with contemporary performance and exceptional tenant amenity.

£12.7M | 32,000 SQ FT

