

INTRODUCTION CORENET GLOBAL CENTRAL EUROPE CHAPTER

Empowering Corporate Real Estate and
Workplace Executives



Central Europe
Chapter

CONNECT

LEARN

GROW

BELONG

WHO WE ARE

CoreNet Global is a dynamic, fully developed **global network of corporate real estate (CREM) and workplace infrastructure professionals** from leading multinational companies who create strategic value for their enterprises.

CONNECT

LEARN

GROW

BELONG



WHO IS CORENET GLOBAL

- Global professional association
- More than **11,000 individual members** worldwide
- many **FORTUNE 500 companies** represented

The organization's mission is to advance the practice of **corporate real estate** through **professional development opportunities, publications, research, conferences, designations and networking** in 46 local chapters and networking groups globally.

CONNECT

LEARN

GROW

BELONG

IN EMEA REGION REPRESENTED VIA CHAPTERS IN:

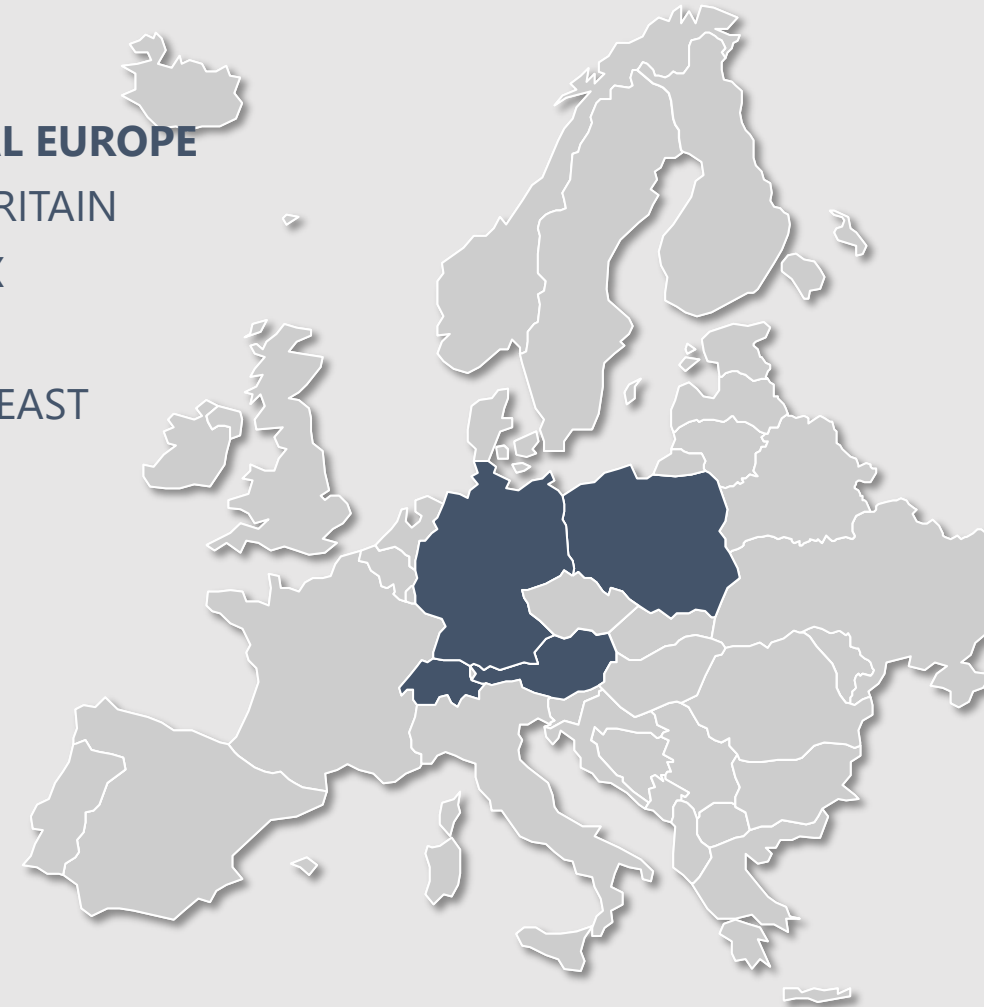
CENTRAL EUROPE

GREAT BRITAIN

BENELUX

FRANCE

MIDDLE EAST



CENTRAL EUROPE CHAPTER BOARD

- PERIODE 04/2025-03/2027



Lina Scherer

President of CE Chapter
Vice President Corporate Real
Estate Management
Schaeffler Technologies AG &
Co KG



Locke McKenzie

Past President of CE Chapter
Strategic Tenant Relations,
Deka Immobilien



Sipho Fuhr

VP Young Leaders
Managing Director,
Bauakademie



Carolina Welter

VP Membership
Real Estate Management,
BASF



Patrick Lange

VP Finance
Sustainability Director,
Agradblue

CONNECT

LEARN

GROW

BELONG

CENTRAL EUROPE CHAPTER EXTENDED BOARD

– REGIONAL PLATFORMS GERMANY



Arne Brandt

Director, Platform North-East
Head of Facility Management
DKB



Dave Gebauer

Director, Platform North-East
CEO
ROM Facility Solutions



Steffen Skopp

Director, Platform West
Director
Deloitte Consulting



Florian Scheef

Director, Platform Rhine-Main
Associate Director Global
Real Estate & Critical Initiatives
Fresenius Medical Care



Jessica Cwyk

Director, Platform Rhine-Main
Real Estate Management
Deka Immobilien Investment GmbH



Maximilian Czekalla

Director, Platform South-East
Director Integrated Facility Solutions
Engie Deutschland



Bettina Stefan

Director, Platform South-East
Projektleitung
Siemens Real Estate Consulting



Matthias Kiefer

Director, Platform South-West
EMEAR Real Estate Director
Dassault Systèmes



Kai Drinda

Director, Platform South-West
Vice President Global Real
Estate & Facilities
SAP

CONNECT

LEARN

GROW

BELONG

CENTRAL EUROPE CHAPTER EXTENDED BOARD

– REGIONAL PLATFORMS AUSTRIA, SWITZERLAND & POLAND



Florian Danner

Director, Austria Platform

Partner

M.O.O.CON



Ganimete Osmanaj

Director, Switzerland Platform

Real Estate & Architectural
Design Alliance Manager CEE

HAWORTH



Rafal Sosinski

Director, Platform Poland North-

Regional FM

ECE Projektmanagement



Tomasz Kwiatkowski

Director, Platform Poland Central East

Senior Consultant
Westbridge Advisory

CONNECT

LEARN

GROW

BELONG

CENTRAL EUROPE CHAPTER EXTENDED BOARD

– FUNCTIONS & TOPIC LEADERS



Prof. Dr. Thomas Glatte

Director, Learning & Liaison
CEO

ImmobilienGruppe RN



Björn Christmann

Director, Cooperations

Managing Director

Bayer Real Estate



Prof. Andreas Pfnür

Director, CREM Research

Fachgebietsleiter

Technical University Darmstadt



Dave Gebauer

Director, Sponsoring

CEO

ROM Facility Solutions

CONNECT

LEARN

GROW

BELONG

CORENET GLOBAL CENTRAL EUROPE CHAPTER

– REGIONAL PLATFORMS 2025
(GERMANY, AUSTRIA, POLAND & SWITZERLAND)



CONNECT

LEARN

GROW

BELONG

Platform North-East



Platform West
(NRW, Northern Hesse)



Platform Rhein
Main (Frankfurt)



REGIONAL PLATFORMS IN GERMANY (2025)

Platform South -
East (Bavaria)



Platform South-
West (Rhine-
Neckar)



CONNECT

LEARN

GROW

BELONG



REGIONAL PLATFORMS OUTSIDE GERMANY (2025)

Platform Austria



Platform Switzerland



Platform Poland



MEMBERS: CENTRAL EUROPE CHAPTER

- Corporates (End User)
- Service Providers
- Economic Developers
- Academic Members
- Students
- Retired Members

47 % Corporates
36 % Service Providers
5 % Academic, Developer
4 % Corporate YL
8 % Serv. YL

59 % Germany
9% Switzerland
4 % Austria
8 % Poland
19 % others

CONNECT

LEARN

GROW

BELONG

OUR MEMBERS IN CENTRAL EUROPE

REPRESENT THE FOLLOWING CORPORATIONS (EXTRACT)

- ABB
- Amazon
- BASF
- Bayer
- Beiersdorf
- Boehringer Ingelheim
- Cisco
- Citi
- Continental
- Deka
- Deutsche Bank
- Deutsche Post
- DKB
- Ebay
- EnBW
- ENGIE
- Fraport
- Feudenberg
- Google
- Henkel
- IBM
- Kellogg
- Lenovo
- Logitech
- MANN + HUMMEL
- MasterCard
- Mondelez
- Netapp
- Nokia
- Oracle
- Procter & Gable
- Pfizer
- Roche
- Salesforce
- SAP
- Schaeffler
- Shell
- Siemens
- Swisscom
- Thyssen Krupp
- ZF Friedrichshafen

CONNECT

LEARN

GROW

BELONG

OUR MEMBERS IN CENTRAL EUROPE

REPRESENT THE FOLLOWING SERVICE PROVIDERS (EXTRACT)

- Accenture
- Apleona
- Art-Invest
- Bauakademie
- BEOS
- BuildingMinds
- CBRE
- Colliers
- Cushman & Wakefield
- Deloitte
- DPDHL Real Estate
- Drees & Sommer
- ECE
- Ernst & Young
- Eurocres
- GLL
- Hailo
- Interface
- ISG
- ISS
- Jones Lang LaSalle
- Lang & Cie. Industrial
- Locatee
- M.O.O.CON
- Mace Group
- Mazars Austria
- PricewaterhouseCoopers
- Recognizer
- Savills
- Steelcase
- Tarkett Desso
- Taylor Wessing
- The Office Group
- TME
- TÜV SÜD
- Vitra
- Wisag
- Wueest Partner

CONNECT

LEARN

GROW

BELONG

CoreNet – ZIA strategic Partnership

Since June 2012 CoreNet CE and ZIA entered into a **strategic partnership** with the goal to promote the dialogue by organizing **joint events** on a regularly basis

IREBS International Real Estate Business School

IREBS is the leading institute for continuing real estate education. CoreNet Global and IREBS developed in cooperation an **intensive-course of studies** with the graduation "Corporate Real Estate Manager (IREBS)". Successful participants are entitled to continue their education through **CoreNet Globals's MCR programme.**

OUR PARTNERS

CONNECT

LEARN

GROW

BELONG

BECOME PART OF THE COMMUNITY

01

Mentoring Program

The program is a 1-on-1 mentorship with a senior leader. We already have a pool of committed mentors from CREM departments, developers, asset management, brokerages and consultancies

02

Young Leader Networkbase

The goal is to offer a kind of network base for the YL at the major events (Summit, Expo, etc.). There is a range of side meeting points for everyone where you can meet other YLs. In AMS, for example, we were able to organize an exclusive excursion.

03

Young Leaders Growth

We want to attract new members with regional events that serve as teasers. It would be important for everyone to forward the events to potentially interested people in your personal network. In addition, the registration process should be simplified.

04

Upcoming Events

There are ideas in every German platform for scheduling 2-4 events in 2025. There is still a need to include the other countries of the Central Europe Chapter.

CONNECT

LEARN

GROW

BELONG

YOUNG LEADERS

For more information:

Sipho Fuhr

sipho.fuhr@bauakademie.de

PARTICIPATE IN OUR EVENTS

- Virtual & local Chapter Events
- Mastertalk Real Estate
- Social Events
- Innovation Workshops
- CoreNet Global Summit EMEA Amsterdam
- Discovery Forum (Corporates)
- MCR Seminars

CONNECT

LEARN

GROW

BELONG

**BECOME PART OF
THE NETWORK**
VALUE PROPOSITION

**[Click here for the newest
events](#)**

The new **real estate webinar series** from **CoreNet Global & Fresenius University of Applied Sciences Heidelberg**

LATEST AND UPCOMING TOPICS:

- CREM in the midmarket
- Building Management Systems
- Employee health in multi-local work structures
- Office real estate after Corona - revival or decline of an asset class?
- Campus/district/urban development
- Digitizing the workplace

CONNECT

LEARN

GROW

BELONG

MASTERTALK REAL ESTATE

For more information:
Prof. Dr. Thomas Glatte
thomas.glatte@igrn.com

BENEFIT FROM OUR EDUCATION

- Leader Magazine (bimonthly)
- E-Leader (weekly e-newsletter)
- The source mobile app
- Knowledge Center
- Survey-based Research Initiatives

**BECOME PART OF
THE NETWORK**
VALUE PROPOSITION

For more information:

Denise Gebauer

centraleuropechapter@corenetglobal.org

CONNECT

LEARN

GROW

BELONG

YOUR CONTRIBUTION

- Become an **active member!**
- Become a **corporate partner** of our association
- Become a **sponsor** for one of our events
- Help us to further **develop the network!**

**BECOME PART OF
THE NETWORK**
VALUE PROPOSITION

Join now!
**[Click here for more
information](#)**

CONNECT

LEARN

GROW

BELONG

TRY BEFORE YOU BUY!

What's Included? Everything you would have access to as a paid member is available to you for **FREE for 30 days** including:

- A FREE copy of The Essential Guide to Corporate Real Estate
- Member-only invitations and pricing for events
- Access to our app, The Source, where you will find curated content relevant to the corporate real estate profession.
- Connect with your peers using the Member Directory
- Participate as a Mentee or Mentor
- And much more!

Price and Promotion: Once the 30-Day Trial is complete, join and save 15% with GROW15 at checkout.

Disclaimer: The Trial Membership is active for thirty (30) days from the Order Date and is only available one time per person. When signing up for the Trial Membership you are agreeing that you will abide by the Association's Bylaws, as well as [all policies of CoreNet Global](#) which may be updated from time to time, and support its objective. You also agree to the use of photos, videos, and testimonials of yourself for promotional purposes. And, when submitting your application, you are subscribed to CoreNet Global e-mail communications until such time you unsubscribe from said communications.

CONNECT

LEARN

GROW

BELONG

TRIAL MEMBERSHIP

**Join now for
trial membership!**

**[Click here for more
information](#)**

- Memberships follow a **1 January – 31 December** calendar year term
- The first year you join we prorate the membership based on the month you join. Memberships purchased 1 July or later will include membership for the remainder of the current year and the following calendar year.
- Members may select a primary affiliation (chapter or community) and up to two additional affiliations
- Membership in CoreNet Global is individual and is non-transferable to another person. No refunds will be payable for any unused portion

CONNECT

LEARN

GROW

BELONG

MEMBERSHIP

Join now!

[Click here to calculate your membership fee](#)



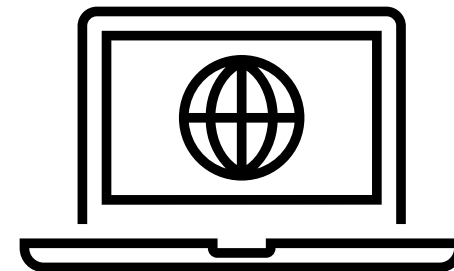
CONTACT

Denise Gebauer

centraleuropechapter@corenetglobal.org

Lina Scherer

l.scherer.corenet@gmail.com



CONNECT

LEARN

GROW

BELONG