

INTRODUCTION CORENET GLOBAL CENTRAL EUROPE CHAPTER

Empowering Corporate Real Estate and
Workplace Executives



Central Europe
Chapter

CONNECT

LEARN

GROW

BELONG

WHO WE ARE

CoreNet Global is a dynamic, fully developed global network of corporate real estate (CREM) and workplace infrastructure professionals from leading multinational companies who create strategic value for their enterprises.

CONNECT

LEARN

GROW

BELONG

WHO IS CORENET GLOBAL

- Global professional association
- More than **11,000 individual members** worldwide
- many **FORTUNE 500 companies** represented

The organization's mission is to advance the practice of **corporate real estate** through **professional development opportunities, publications, research, conferences, designations and networking** in 46 local chapters and networking groups globally.

CONNECT

LEARN

GROW

BELONG

IN EMEA REGION REPRESENTED VIA CHAPTERS IN:

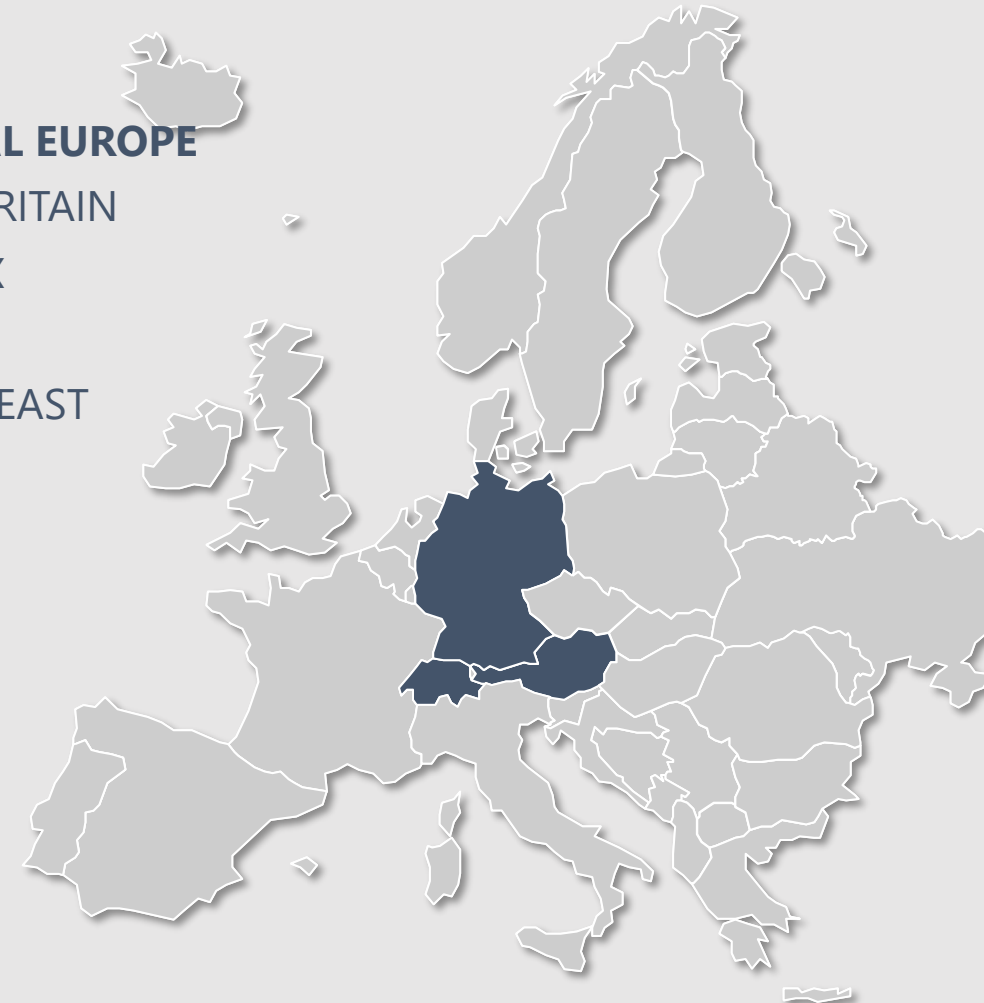
CENTRAL EUROPE

GREAT BRITAIN

BENELUX

FRANCE

MIDDLE EAST



CENTRAL EUROPE CHAPTER BOARD

- PERIODE 04/2023-04/2025



Locke McKenzie

President of Chapter
Strategic Tenant Relations,
Deka Real Estate



Christian Schlicht

Past-President
CEO
CS Ventures



Carolina Welter

VP Members
Project Manager CRE
BASF



Patrick Lange

VP Finance
Smart Building & ESG Consultant,
Interim Management CRE/FM



Sipho Fuhr

VP Young Leaders
Managing Director,
Bauakademie

CONNECT

LEARN

GROW

BELONG

CENTRAL EUROPE CHAPTER EXTENDED BOARD

– FUNCTIONS & TOPIC LEADERS



Prof. Dr. Thomas Glatte

Director, Learning & Liaison
CEO
IG Rhein-Neckar



Björn Christmann

Director, Cooperations
Managing Director
Bayer Real Estate



Prof. Andreas Pfnür

Director, CREM Research
Fachgebietsleiter
Technical University Darmstadt

N. N.

Director, ESG & Digitalization
Smart Building & ESG Consultant,
Interim Management CRE/FM



Bettina Stefán

Director, Marketing
Expert New Work

N. N.

Director, Diversity, Equity, and Inclusion

CONNECT

LEARN

GROW

BELONG

CENTRAL EUROPE CHAPTER EXTENDED BOARD

– REGIONAL PLATFORMS GERMANY



Dave Gebauer

Director, Platform North-East
Director Facility Solutions
ENGIE



Arne Brandt

Director, Platform North-East
Head of Facility Management
DKB



Wolfgang Speer

Director, Platform South-East
Vorstand
Lang & Cie. Industrial AG



Martina Williams

Director, Platform Rhine-Main
Head of Corporate Solutions,
Jones Lang LaSalle



Christoph Zimmer

Director, Platform South-East
Head of Corporate Consulting
Drees & Sommer



Kai Drinda

Director, Platform South-West
Vice President CREM
MANN+HUMMEL Group



Steffen Skopp

Director, Platform West &
Topic Lead Innovation
Director, Deloitte Consulting

CONNECT

LEARN

GROW

BELONG

CENTRAL EUROPE CHAPTER EXTENDED BOARD

– REGIONAL PLATFORMS AUSTRIA, SWITZERLAND, POLAND



Florian Danner

Director, Platform Austria

Partner

M.O.O.CON



Rafal Sosinski

Director, Platform Poland

Regional Facility Management

ECE



Jöri Engel

Director, Platform Switzerland

Head of Corporate Real Estate Management

Swisscom

CONNECT

LEARN

GROW

BELONG

Platform North-East



Platform West (NRW, Nordhessen)



Platform Rhein Main (Frankfurt)



Platform South- West (Rhein Neckar)



Platform South - East (Bayern)



REGIONAL PLATFORMS GERMANY

CONNECT

LEARN

GROW

BELONG



CONNECT

LEARN

GROW

BELONG

REGIONAL PLATFORMS

Platform Austria



Platform Switzerland



Platform Polen



MEMBERS: CENTRAL EUROPE CHAPTER

- Corporates (End User)
- Service Providers
- Economic Developers
- Academic Members
- Students
- Retired Members

51 % Corporates
30 % Service Providers
3 % Academic, Developer
6 % Corporate YL
10 % Serv. YL

63 % Germany
10 % Switzerland
2 % Austria
4 % Poland
21 % others

OUR MEMBERS IN CENTRAL EUROPE

REPRESENT THE FOLLOWING CORPORATIONS (EXTRACT)

- ABB
- Amazon
- BASF
- Bayer
- Beiersdorf
- Boehringer Ingelheim
- Cisco
- Citi
- Continental
- Deka
- Deutsche Bank
- Deutsche Post
- DKB
- Ebay
- EnBW
- ENGIE
- Fraport
- Feudenberg
- Google
- Henkel
- IBM
- Kellogg
- Lenovo
- Logitech
- MANN + HUMMEL
- MasterCard
- Mondelez
- Netapp
- Nokia
- Oracle
- Procter & Gable
- Pfizer
- Roche
- Salesforce
- SAP
- Shell
- Siemens
- Swisscom
- Thyssen Krupp
- ZF Friedrichshafen

CONNECT

LEARN

GROW

BELONG

OUR MEMBERS IN CENTRAL EUROPE

REPRESENT THE FOLLOWING SERVICE PROVIDERS (EXTRACT)

- Accenture
- Apleona
- Art-Invest
- Bauakademie
- BEOS
- BuildingMinds
- CBRE
- Colliers
- Cushman & Wakefield
- Deloitte
- DPDHL Real Estate
- Drees & Sommer
- ECE
- Ernst & Young
- Eurocres
- GLL
- Hailo
- Interface
- ISG
- ISS
- Jones Lang LaSalle
- Lang & Cie. Industrial
- Locatee
- M.O.O.CON
- Mace Group
- Mazars Austria
- PricewaterhouseCoopers
- Recognizer
- Savills
- Steelcase
- Tarkett Desso
- Taylor Wessing
- The Office Group
- TME
- TÜV SÜD
- Vitra
- Wisag
- Wueest Partner

CoreNet – ZIA strategic Partnership

Since June 2012 CoreNet CE and ZIA entered into a **strategic partnership** with the goal to promote the dialogue by organizing **joint events** on a regularly basis

IREBS International Real Estate Business School

IREBS is the leading institute for continuing real estate education. CoreNet Global and IREBS developed in cooperation an **intensive-course of studies** with the graduation "Corporate Real Estate Manager (IREBS)". Successful participants are entitled to continue their education through **CoreNet Globals's MCR programme.**

OUR PARTNERS

CONNECT

LEARN

GROW

BELONG

BECOME PART OF THE COMMUNITY

- **Mentoring program**
- **Special events** for Young Leader only
- Social Media exchange **network**

YOUNG LEADER GROUP

For more information:
Locke McKenzie
locke.mckenzie@deka.de

CONNECT

LEARN

GROW

BELONG

PARTICIPATE IN OUR EVENTS

- Virtual & local Chapter Events
- Mastertalk Real Estate
- Social Events
- Innovation Workshops
- European Summit 2022 (Antwerp)
- Discovery Forum (Corporates)
- MCR Seminars

CONNECT

LEARN

GROW

BELONG

**BECOME PART OF
THE NETWORK**
VALUE PROPOSITION

**Click here for the
newest events**

The new **real estate webinar series** from **CoreNet Global & Fresenius University of Applied Sciences Heidelberg**

LATEST AND UPCOMING TOPICS:

- CREM im Mittelstand
- Building Management Systems
- Mitarbeitergesundheit in multi-lokalen Arbeitsstrukturen
- Büroimmobilien nach Corona- Revival oder Niedergang einer Assetklasse?
- Campus-/Quartiers-/Stadtentwicklung
- Digitalisierung des Arbeitsplatzes

CONNECT

LEARN

GROW

BELONG

MASTERTALK REAL ESTATE

For more information:

Prof. Dr. Thomas Glatte
Thomas.glatte@basf.com

BENEFIT FROM OUR EDUCATION

- Leader Magazine (bimonthly)
- E-Leader (weekly e-newsletter)
- The source mobile app
- Knowledge Center
- Survey-based Research Initiatives

**BECOME PART OF
THE NETWORK**
VALUE PROPOSITION

For more information:

Jasmin Beckenbach

centraleuropechapter@corenetglobal.org

CONNECT

LEARN

GROW

BELONG

YOUR CONTRIBUTION

- Become an **active member!**
- Become a **corporate partner** of our association
- Become a **sponsor** for one of our events
- Help us to further **develop the network!**

**BECOME PART OF
THE NETWORK**
VALUE PROPOSITION

Join now!

**Click here for more
information**

CONNECT

LEARN

GROW

BELONG

TRY BEFORE YOU BUY!

What's Included? Everything you would have access to as a paid member is available to you for **FREE for 30 days** including:

- A FREE copy of The Essential Guide to Corporate Real Estate
- Member-only invitations and pricing for events
- Access to our app, The Source, where you will find curated content relevant to the corporate real estate profession.
- Connect with your peers using the Member Directory
- Participate as a Mentee or Mentor
- And much more!

Price and Promotion: Once the 30-Day Trial is complete, join and save 15% with GROW15 at checkout.

Disclaimer: The Trial Membership is active for thirty (30) days from the Order Date and is only available one time per person. When signing up for the Trial Membership you are agreeing that you will abide by the Association's Bylaws, as well as [all policies of CoreNet Global](#) which may be updated from time to time, and support its objective. You also agree to the use of photos, videos, and testimonials of yourself for promotional purposes. And, when submitting your application, you are subscribed to CoreNet Global e-mail communications until such time you unsubscribe from said communications.

CONNECT

LEARN

GROW

BELONG

TRIAL MEMBERSHIP

**Join now for
trial membership!**

[Click here for more
information](#)

- Memberships follow a **1 January – 31 December** calendar year term
- The first year you join we prorate the membership based on the month you join. Memberships purchased 1 July or later will include membership for the remainder of the current year and the following calendar year.
- Members may select a primary affiliation (chapter or community) and up to two additional affiliations
- Membership in CoreNet Global is individual, cannot be canceled, and is non-transferable to another person. No refunds will be payable for any unused portion

MEMBERSHIP

Join now!

**[Click here for more
information on
membership fee](#)**

CONNECT

LEARN

GROW

BELONG



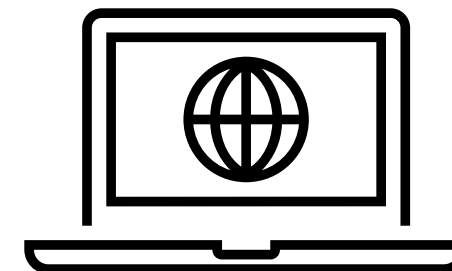
CONTACT

Jasmin Beckenbach

centraleuropechapter@corenetglobal.org

Locke McKenzie

locke.mckenzie@deka.de



CONNECT

LEARN

GROW

BELONG