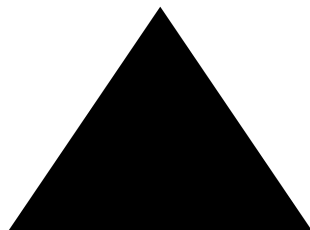


# Getting to the Palais des congrès

## About the Palais des congrès

The Palais des congrès offers a [virtual tour](#). Our meeting will take place on the 5th floor in rooms 517-525. You can use this tool to visualize your point of entry into the Palais and route to our session rooms. All areas of the Palais are accessible by wheelchair or other mobility aid. Flooring is all tile or low pile carpet. Maps of the Palais and hotel will have elevators marked. All session rooms in the Palais are on the fifth floor, limiting travel distance between rooms and elevator usage. We have added accessibility notes on each route, but due to ongoing construction in the surrounding areas, your actual route may vary. We recommend the street level/outdoors route as most accessible. Our sessions are on the north end of the Palais, the Rue Saint-Urbain side, not the Place Jean-Paul-Riopelle side. Once you enter the Palais, look for these floor stickers to help direct you:



**Suivez-moi !**  
**Follow me!**



## Entering the Palais

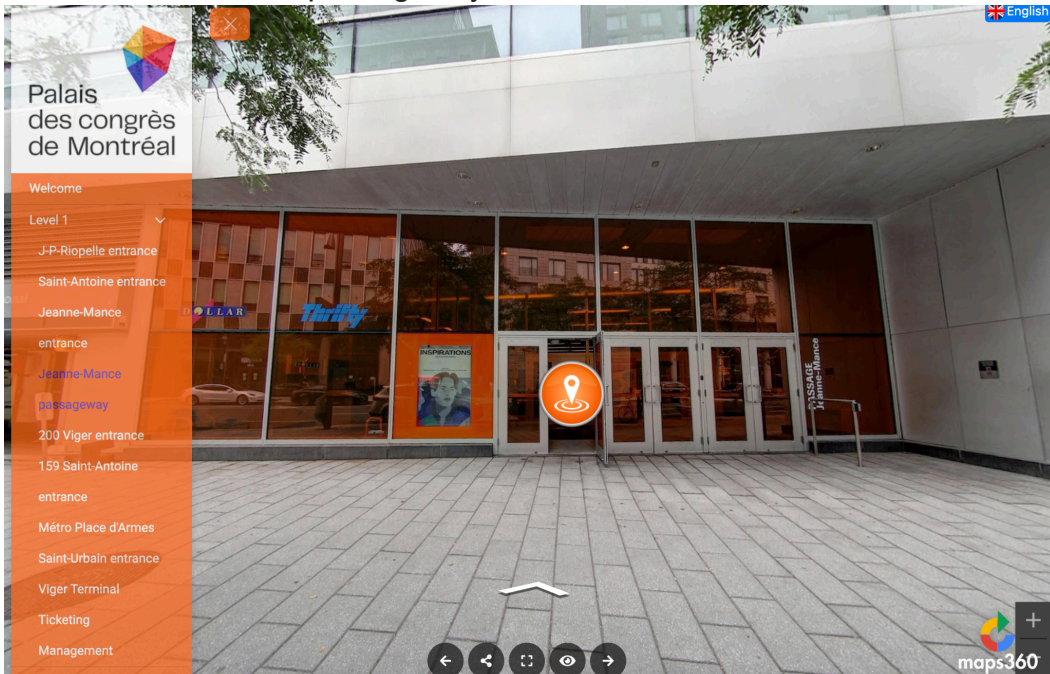
### Entrances and Addresses for Google Maps and Ride Shares

- **Pathway Jeanne Mance:** This passage runs through the Palais with two entrances to the Palais, one on Avenue Viger and the other one on Rue Saint Antoine. If you walk straight down Jeanne-Mance from the DoubleTree on street

level, this is the first entrance you see:



The other side of this passageway is an entrance on Saint-Antoine:



- **100 Avenue Viger Ouest.** Corner of Avenue Viger Ouest and Rue Saint-Urbain. This is kitty-corner from the Holiday Inn Montreal Centreville, also findable as an entrance to the Place-d'Armes metro stop. This is a good entrance if you're coming from further North and East of the Palais. If entering here, you're on the first floor and take the escalators or elevator up to the session spaces.



- **1001 Pl. Jean Paul Riopelle:** Accessible entrance for drop off or walking, but be advised, you will need to walk through the Palais to reach our session rooms.

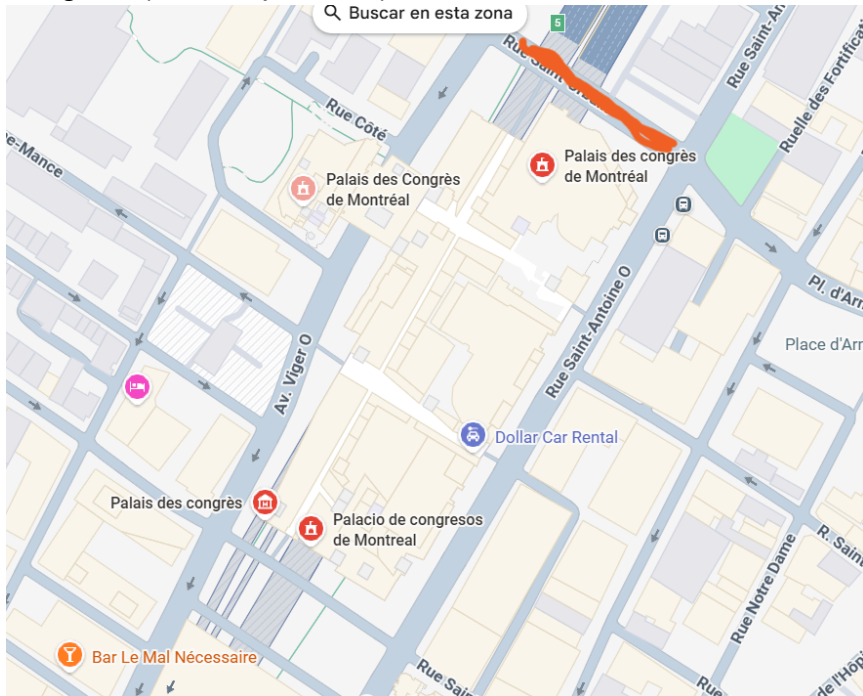


- **301 Rue Saint Antoine Ouest:** Great entrance for drop off or walking, but be advised, you will need to walk through the Palais to reach our session rooms.



## Street Closures

Due to construction, a section on Rue St. Denis is closed and difficult for pedestrians to navigate. (See map below.)



Also note, the entrances on De la Gauchetière Street will be locked as another organization is using the Hall Viger. You can enter by the Metro entrance to the left of these entrances.

## Arriving from the Conference Hotel

The DoubleTree by Hilton Montreal is roughly 15-20 minutes by foot from the Palais. Attendees staying in the conference hotel can access the Palais either on street level outside or through underground connections through Montreal's [Underground City \(RESO\)](#) network. However, construction in the Complexe Desjardins between the hotel and Palais has currently made the route through the RESO **not accessible for wheelchair users or people with mobility aids**.

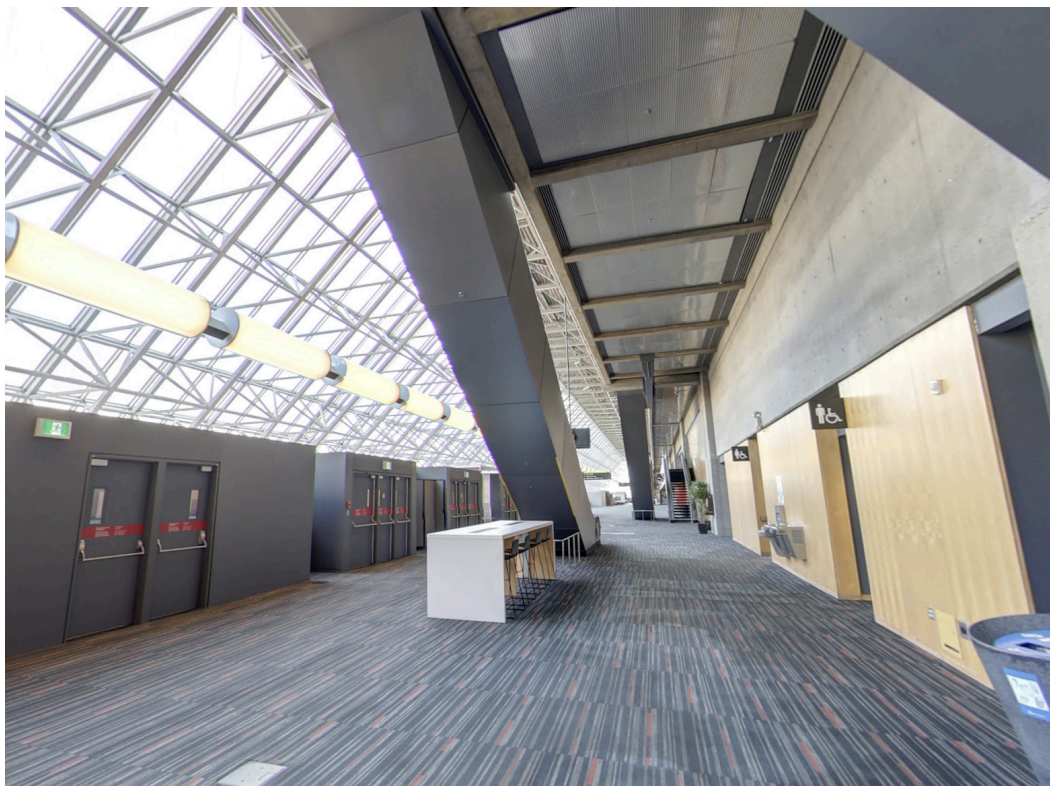
### Street Level/Outdoors

From the hotel lobby, take the elevator down to street level. (This elevator only goes from street level to the lobby.) Leave the vestibule into the valet parking/taxi drop off. Head left onto Jeanne-Mance Street. Walk three blocks until Jeanne-Mance dead ends into the Palais. You can then enter the Pathway Jeanne Mance entrance. Once inside, turn left and find an elevator that will take you directly to the 5th floor, or turn left and walk until you see escalators and stairs to your left.

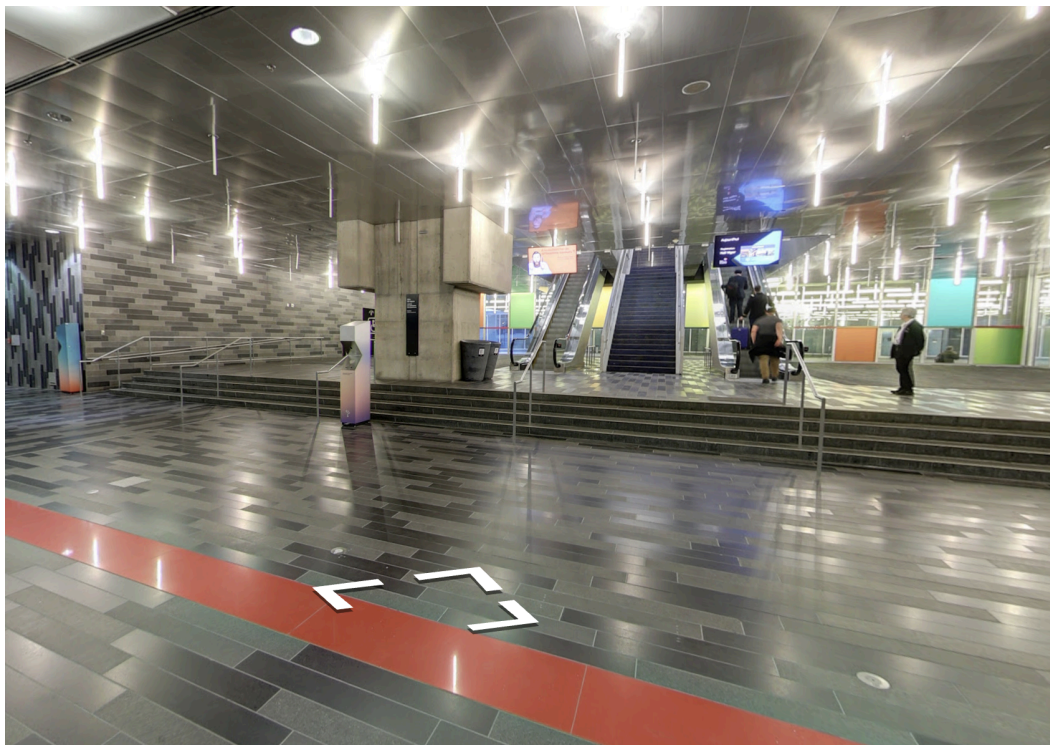




If you take the elevator to the 5th floor, when the doors open, you'll be facing a hallway. Head in this direction past two escalators and arrive at Registration.



If you kept walking down the hall, the escalators and stairs look like this:



You then will be facing another bank of stairs and escalators. Go around them and take them up to the 5th floor and you'll be at Registration.



There is another conference taking place in the Palais, so be sure to come up to the **5th floor!**



## Parking

If you are driving to the Palais, there is a parking garage on site with accessible spaces. The elevators in the garage go directly to the meeting level of the convention center. The maximum daily fee is \$30 CAD. Parking spaces are rented on a daily basis. There are no multiday packages. Please note there are no unlimited in-out privileges. Each time you take your vehicle out of the carpark, you will have to pay again to be readmitted, even if on the same day.

## From the Subway

The subway station closest to the Palais is [Place-d'Armes](#), along the orange line. One exit connects directly to the Galeries du Palais. Please be advised, the most direct entry to the Palais from the station involves stairs. If you are riding the subway and need an elevator, you would need to take a ramp on the other side of the metro station, exit the station, turn right and re-enter through the entrance next to the Burger King. From there, follow the instructions above to reach registration.



## By Bus

Buses 55 and 129 will both take you to the Palais. Go to the [Société des transports de Montréal \(STM\)](#) website to determine which bus and times are best for you based on your point of departure.