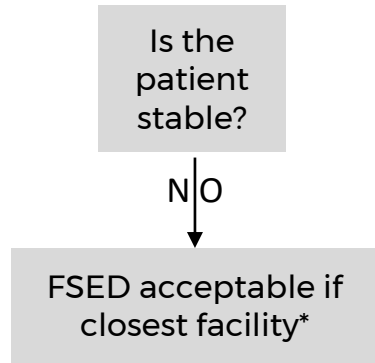


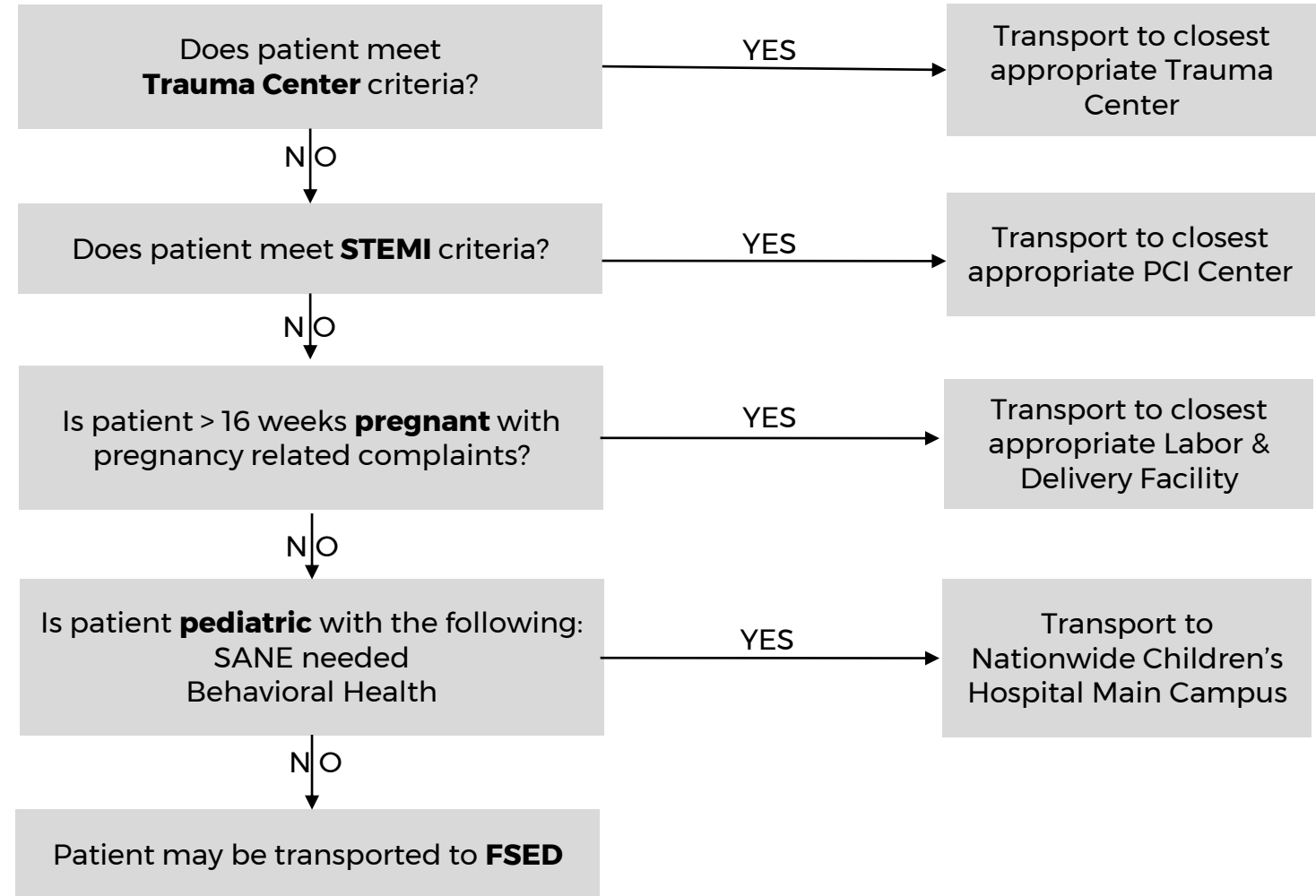


EMS Destination Tool for Free Standing Emergency Departments (FSED)



*Be prepared to possibly continue transport to tertiary care facility once patient is stabilized (Re-intubation, IV access, vasopressors, etc.)

LEGEND:
PCI: Percutaneous Coronary Intervention
SANE: Sexual Assault Nurse Examiner
STEMI: ST Elevation Myocardial Infarction



This EMS Destination Tool is meant for guidance only and should not supersede any EMS agencies established medical protocol or SOPs