

# *Biometric* BULLETIN

“Biometry, the active pursuit of biological knowledge by quantitative methods.” - R.A. Fisher, 1948

International Biometric Society Internationale Biometrische Gesellschaft Société Internationale de Biométrie

## President's CORNER



**María Gabriela Cendoya**  
International Biometric Society President

Dear Members of the International Biometric Society,

I am happy to welcome you once again to the Society's *Bulletin*. As we get closer to [IBC Seoul](#), I wanted to share how much I'm looking forward to it. It will be great to meet again in person, catch up with colleagues, exchange ideas, and simply spend time together as a community.

IBC Seoul is shaping up very well. We've already passed 850 registered participants, which shows the strong interest and involvement across our Society. The academic program is also in great shape. Alongside the main sessions, IBC includes a set of very attractive pre-conference short courses, offering a good opportunity to dive deeper into specific topics and build new skills.

I would also like to draw your attention to the conference lecture by Professor Alan Agresti, who will reflect on how categorical data analysis has evolved over the years. For many of us working in applied biometrics, these methods are

*Continued on Page 4*

## 9 IBC2026

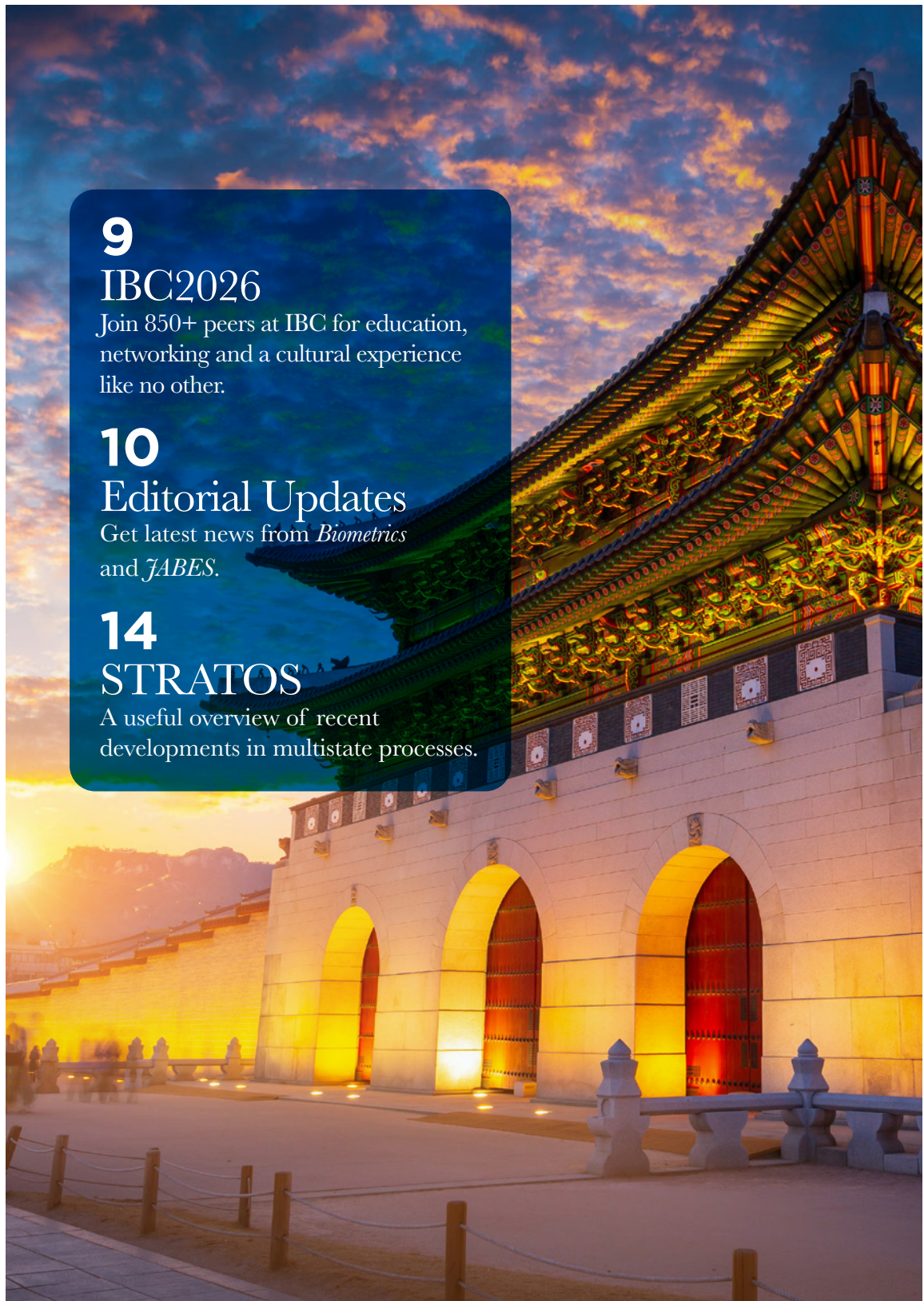
Join 850+ peers at IBC for education, networking and a cultural experience like no other.

## 10 Editorial Updates

Get latest news from *Biometrics* and *JABES*.

## 14 STRATOS

A useful overview of recent developments in multistate processes.



# *Biometric* BULLETIN

ISSN 8750-0434

Copyright © 2026

International Biometric Society

Biometric Bulletin is typically published four times a year in  
March, June, September, and December.

International Biometric Society

1120 20th Street, NW, Suite 750 • Washington, DC 20036-3441 USA

Telephone: +1 (202) 712-9049 • Fax: +1 (202) 216-9646

Email: [ibs@biometricsociety.org](mailto:ibs@biometricsociety.org) Website: <http://www.biometricsociety.org>

The *Biometric Bulletin* is available to members of the Society  
as part of their membership dues.

The views and contributions to this publication should not be ascribed to the  
International Biometric Society. Reproduction for commercial purposes is  
allowed if the source is acknowledged.

## Editor

Garth Tarr, University of Sydney, Australia - [garth.tarr@sydney.edu.au](mailto:garth.tarr@sydney.edu.au)

## Associate Editor

Lu Mao, University of Wisconsin, [lmao@biostat.wisc.edu](mailto:lmao@biostat.wisc.edu)

## International Biometric Society Executive Board

President - Maria Gabriela Cendoya (Argentina Region)

Treasurer - Sarah Ratcliffe (Eastern North American Region)

Secretary - Tarylee Reddy (South African Region)

Outgoing President - Iris Pigeot (German Region)

## Directors

Thomas Ochieng Achia (GKe); Scarlett Bellamy (ENAR); Andrea Berghold (ROeS);  
Catherine (Kate) Crespi (WNAR); Mike Daniels (ENAR); Clelia Di Serio (RItI);  
Ruth Keogh (BIR); Leslie A. McClure (ENAR); Guadalupe Gómez Melis (REsp);  
Taesung Park (RKO); Luiz Alexandre Peternelli (RBras); Chris Triggs (AR)

## Biometrics Editorial Team

Executive Editor: Geert Molenberghs, Interuniversity Institute for Biostatistics & Statistical  
Bioinformatics, Hasselt University & KU Leuven, Belgium;  
EMAIL: [geert.molenberghs@uhasselt.be](mailto:geert.molenberghs@uhasselt.be)

Co-Editor: Cécile Proust-Lima, INSERM, University of Bordeaux, France;  
EMAIL: [cecile.proust-lima@u-bordeaux.fr](mailto:cecile.proust-lima@u-bordeaux.fr)

Co-Editor: Erica Moodie, McGill University, Canada;  
EMAIL: [erica.moodie@mcgill.ca](mailto:erica.moodie@mcgill.ca)

Co-Editor: Matthew Schofield, University of Otago, New Zealand;  
EMAIL: [Matthew.schofield@otago.ac.nz](mailto:Matthew.schofield@otago.ac.nz)

Book Review Editor: Andrew Spieker, Vanderbilt University Medical Center, USA;  
EMAIL: [andrew.spieker@vumc.edu](mailto:andrew.spieker@vumc.edu)

Editorial Managers: Chantal Brodie and Ann Hanhart;  
EMAIL: [biometrics@biometricsociety.org](mailto:biometrics@biometricsociety.org)

## *Journal of Agricultural, Biological and Environmental Statistics (JABES) Editor*

Murali Haran; [murali.haran@psu.edu](mailto:murali.haran@psu.edu)

# Region Key

## Regions

RArg - Argentinean Region

AR - Australasian Region

ROeS - Austro-Swiss Region

RBe - Belgian Region

Benin - Benin Region

GBot - Botswanian Region

RBras - Brazilian Region

BIR - British and Irish Region

RCAC - Central American-  
Caribbean Region

GComr - Cameroon Region

GCI - Chilean Region

CHINA - Chinese Region

CROA - Croatian Region

EMR - Eastern Mediterranean  
Region

ENAR - Eastern North American  
Region

ECU - Ecuadorian Region

GEth - Ethiopian Region

RF - French Region

DR - German Region

GGha - Ghanaian Region

IR - Indian Region

RItI - Italian Region

JR - Japanese Region

GKe - Kenyan Region

RKo - Korean Region

GMal - Malawi Region

NAM - Namibian Region

GNI - Nigerian Region

NR - Nordic-Baltic Region

GPol - Polish Region

GRo - Romanian Region

RWAN - Rwanda Region

GSaf - South African Region

REsp - Spanish Region

ANed - The Netherlands Region

GUGan - Ugandan Region

WNAR - Western North American  
Region

GZim - Zimbabwean Region

## Networks

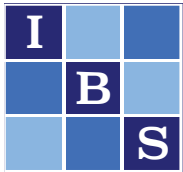
CEN - Central European Network

CN - Channel Network

EAN - East Asian Network

HISP - Hispanic International  
Network

SUSAN - Sub-Saharan Network



# Biometric BULLETIN



## 7

### Women's Corner

Justine B. Nasejje, PhD discusses how her first experience with the IBS community had a profound impact on her career, giving her the confidence to imagine herself as part of the global research community.

## STRATOS

## 14

### STrengthening Analytical Thinking for Observational Studies (STRATOS): A Short Summary of "An Overview and Recent Developments in the Analysis of Multistate Processes"

In this issue, STRATOS describes the foundations of multistate modeling and illustrates the utility of this framework for studying dynamic disease processes involving distinct states of health when the times of transitions and paths taken carry scientific meaning. This paper explains how familiar methods and software for survival analysis can be easily adapted for the analysis of multistate processes under right censoring.



## 17

### Regional News

The Regional News section provides a snapshot of the vibrant activities taking place across our global network, including updates from the Austro-Swiss, British and Irish, Central American and Caribbean, French, German, Japanese, and Western North American regions.

## 5

### Update from the IBO

IBS Executive Director Peter highlights the exciting opportunities at IBC2026. Plus, learn more about how early career statisticians can engage in Seoul.

## 6

### Letter from the Editor

*Biometric Bulletin* Editor Garth Tarr introduces the issue, highlighting the Women's Corner and STRATOS contributions, editorial updates, and regional reports.

### Editorial Updates

*Biometrics*  
*JABES*

10  
11

## 17

### Regional News

Austro-Swiss (ROeS)	17
British and Irish (BIR)	17
Central American and Caribbean (RCAC)	19
French (FR)	20
German (DR)	20
Japan (JR)	21
Western North America (WNAR)	22

## 24

### Announcements & Upcoming Events

## PRESIDENT'S CORNER

*Continued from page 1*

part of our daily work. Professor Agresti's long-term view of the field will be both intellectually stimulating and deeply enriching.

We will wrap up the meeting on Thursday with the Final and Closing Ceremony. This session will not only bring IBC Seoul to a close, but will also give us a look ahead, with a preview of IBC2028 and the announcement of IBC2030.

On Thursday afternoon, participants will also have the chance to join a selection of organized tours. These are a great opportunity to keep the conversations going after the conference sessions, but in a much more relaxed setting. They're also a wonderful way to enjoy Korea's rich and fascinating culture together, and to bring this conference experience to a truly memorable close.

In addition, on Wednesday evening there will be a Han River Moonlight Cruise dinner, available through the [IBC2026 tours](#) page. It promises to be an unforgettable experience to share with friends or colleagues in a very special atmosphere. I hope to meet many of you there!

IBC Seoul 2026 would not be possible without the time, energy, and commitment of many colleagues. I would like to especially thank Iris Pigeot, Organizing President of IBC2026; Frank Bretz, President of the International Program Committee; and Sohee Park and Ho Kim, Chair and Co-Chair of the Local Organizing Committee. I am also very grateful to the members of the IBS Committees and to everyone who has contributed behind the scenes. The IBO and MCI teams have also been working incredibly hard on this event. While I cannot name everyone individually, my sincere thanks go to all who have helped make this conference happen.

While much of our attention has naturally been focused on IBC Seoul, many other Society activities are moving forward as well. Planning for IBC2028 is already well underway.

All IBS committees continue to meet regularly, sharing ideas and providing guidance that supports the work of the Board and the Society as a whole. The Representative Council has already met twice this year, and several task forces are actively working on topics that are important to the Society. These efforts depend heavily on member involvement, and there is always room for more volunteers. If you are interested, I warmly encourage you to add your name to the Society's volunteer list.

The Representative Council has also recently approved the Honorary Life Membership Award for Raúl E. Macchiavelli, as well as multiple recipients of the Rob Kempton Award: Tobias Chirwa, Xiao Hua (Andrew) Zhou, and Ziv Shkedy. Congratulations to all of them!

I cannot mention these activities without expressing my sincere thanks to Xavier Barber Vallès and Tim Friede, Chair and Outgoing Chair of the Representative Council, for their dedication and leadership. Their work has been essential to the smooth functioning of this important body.

I very much look forward to welcoming you all in Seoul and to sharing, once again and face to face, an outstanding scientific and human experience.

All the best,

**María Gabriela Cendoya**  
*International Biometric Society President*

**SIGN UP  
FOR SHORT  
COURSES  
WHEN YOU  
REGISTER  
FOR IBC2026**

**IBC2026 is fast approaching! Now is the perfect time to register and begin making plans to join us 12-16 July 2026 in Seoul, South Korea.**

During registration, we encourage you to take advantage of our Short Course Program. The IBC Short Course Program includes full-day and half-day courses, taking place on 12 July 2026 at the main conference venue in Seoul. Led by internationally recognized experts, these courses offer in-depth learning on timely topics in biostatistics and biometrics.

You can select one or more courses during registration, and we encourage you to **reserve your spot early**, as courses will run based on minimum enrollment.



# Update FROM THE IBO



**Peter Doherty**  
*Executive Director*

Hello once again, Society members! It's early May as I write this, and I am thinking about all of the activities, scientific sessions, and memorable networking moments that many of us will soon experience in Seoul at our 33rd biennial International Biometric Conference. But the single most important ingredient that goes into making a successful IBC is its people. And I'd like to focus on a few specific groups of people as part of this IBO update.

First, I have to share my excitement that we will soon welcome **IBC delegates** from nearly 60 countries. This is truly a conference where the world comes together! And our colleagues from Asia will no doubt be joining us in greater numbers than usual. After all, not since 2012 (Kobe) have we had the opportunity to meet in person in Asia, and I am

pleased that more than 850 of our colleagues have already made the decision to join us (compared to 584 in 2012). We will of course share final statistics following the conclusion of the conference. But I already believe that our planning group, staff, and local organizers from the Korean Region deserve a round of applause!

Next, let's focus on those colleagues who are early in their careers. Our **young statisticians** have so many occasions ahead of them to celebrate, not only at the IBC in Seoul but in their roles at their current and future institutions. As we monitor how local culture, new technologies and shifting opinions might rapidly change how and where we live and work, the Society wants to make sure that our programs and offerings are also adapting to better serve all members, and especially our younger statisticians. And I come to you today with this question... "How can we improve the activities for young statisticians at the 2026 IBC and beyond?" In case you were not aware, current activities on the IBC 2026 schedule focused on our younger

colleagues include the Young Statisticians Coffee Social, Young Statisticians Showcase competition, a brand new Young Researchers Panel, our always popular evening Young Statisticians Reception, a variety of hands-on volunteer activities for young statisticians, and our current tours and excursions line-up. In addition, many younger statisticians will be presenting their research, thanks to our hard-working International Program Committee. And some have been the beneficiaries of travel grants, through the generous support of IBS members. But is there even more we could / should do? And what else might we do during the year, outside of IBC activities? We would love to hear your thoughts on this topic. As a matter of fact, we have recently formed a task force whose primary charge is improving the programs and services offered to younger members.

If you'd like to respond to this question, you are welcome to send your reply to [ibs@biometricsociety.org](mailto:ibs@biometricsociety.org). Let's have a conversation. And who knows? Perhaps you can even assist us with this effort in the future as an IBS volunteer?

I will close this latest installment by saying that I have not mentioned our airline booking discounts lately. Discounts still remain to be had. And if you're joining us in Seoul, you're running out of time to secure those flights! For more information, visit <https://www.ibc2026.org/location/hotel-and-travel>.

As always, you are welcome to reach out to the IBO with questions. We are here for you!

Best Wishes,

**Peter Doherty, CAE**  
*Executive Director*

---

## FROM THE EDITOR

As I write this note, the Society's attention is turning toward Seoul and the 33rd International Biometric Conference. Earlier today, I was corresponding with colleagues from around our Society, making plans with genuine enthusiasm to meet and collaborate in Seoul. This issue of the *Biometric Bulletin* reflects that sense of anticipation, with updates from our President and the International Biometric Office highlighting the scientific program, opportunities for connection, and the tireless efforts of many colleagues to ensure a successful IBC2026.

While the biennial conference is certainly a major event, this issue reminds us that there is so much more to the IBS. The Women's Corner contribution from Dr. Justine B. Nasejje offers a thoughtful account of early-career development, mentorship,

motherhood, and the full-circle experience of supporting the next generation of researchers. The journal updates from *Biometrics* and *JABES* highlight continuing editorial activity, awards, special issues, and the work of authors, reviewers, and editors across our community. The STRATOS contribution provides a useful overview of recent developments in multistate processes, while the regional reports show the breadth of activity taking place across the Society.

Thank you to all contributors, correspondents, and staff who helped put this issue together. I hope readers enjoy this edition and, for those travelling to Seoul, I look forward to seeing many of you there!

**Garth Tarr**  
*Biometric Bulletin, Editor*

---

## EXPERIENCE SEOUL DURING IBC2026

The South Korean capital of Seoul seamlessly blends rapidly growing cultural trends with a deep history and sense of tradition. In Seoul, you can cross a street from an ancient palace, where Joseon kings walked, to the latest high-rise buildings. With its diverse attractions, Seoul is a distinct global tourist destination that encompasses history, culture, art, cuisine, and shopping.

We encourage our IBC2026 attendees to stay through the final programming day on Thursday, when a variety of tours and excursions will be arranged just for our delegates. [Visit the Tours and Excursions page](#) for more information.



## Women's CORNER



**Justine Nasejje, PhD**

### **From First Steps to Mentorship: My Journey with IBS**

A story of Justine B. Nasejje, PhD, School of Statistics and Actuarial Science, University of the Witwatersrand

I recently came across a report I wrote after attending my very first International Biometric Society (IBS) event in 2017, which was generously supported by IBS. Reading it years later felt like opening a time capsule, one that captured not only my early excitement as a young researcher, but also the beginning of a journey that has quietly shaped my academic path.

At the time, I was a PhD student attending the IBS-SUSAN conference in Lilongwe, Malawi. It was my first exposure to an international scientific community focused on biostatistics. In my report, I described the breadth of topics covered, from statistical methodology and modeling to computation and education as well as the diversity of participants who had travelled from across Africa, Europe, and America.

I remember being particularly inspired by the depth of discussions on missing data, scientific writing, and

the future of data science in Africa. These were not just academic conversations; they were shaping how I began to think about my own research and its place in a rapidly evolving field.

Presenting my work on survival analysis, as part of my PhD research, was both exciting and intimidating. My study, which compared conditional inference survival forests with random survival forests, sparked strong engagement from the audience, with discussions extending well beyond the formal sessions. That same year, I submitted my thesis, which was later recognised with the 2018 prestigious Kambule Award.

What stood out most, however, was the sense of community. I had the opportunity to interact with both experienced researchers and fellow early-career scientists, gaining insights, encouragement, and valuable feedback on my work.

Looking back, what remains most vivid is not just the knowledge I gained, but the possibilities that the experience opened up. That first international conference in my field gave me the confidence to imagine myself as part of the global research community.

Shortly after that first IBS experience, my life changed in a profound way, I became a mother to twin girls in September 2018. Like many women in academia, balancing the demands of research and motherhood was not always easy. There were moments when the path forward felt uncertain. Yet

the inspiration and sense of possibility I had gained from those early IBS experiences stayed with me. They gave me something to hold onto, reminding me that growth is not always linear and that it is possible to keep moving forward, even through challenging seasons.

Nearly a decade later, I now find myself preparing to attend my second International Biometric Conference, and my third in-person IBS event, this time accompanied by my MSc student. This moment feels deeply significant. It is not simply about attending another conference, but about witnessing growth: from being mentored to becoming a mentor.

Along the way, IBS has played an important role in my development. After attending the International Biometric Conference in Riga, Latvia in 2022, I took a step that would prove to be transformative. Having attended a workshop led by Professor Malka Gorfine, I felt that her work aligned closely with my research interests. I reached out to her directly to ask if she would consider mentoring me and to my delight, she responded immediately and agreed.

Like many academic journeys, the mentorship was not without its challenges. With multiple responsibilities on both sides, we often had to reschedule meetings. However, despite these interruptions, the mentorship proved to be deeply valuable. It provided guidance, encouragement, and clarity at a time when I was transitioning into a more independent stage of my academic career.

Through these discussions, I realised the importance of creating space to think and refocus my research direction. Inspired by this, I took a deliberate step back to reflect on my next research path. This period of reflection ultimately led me to apply for the Humboldt Fellowship.

Now, as a Humboldt Fellow, I can clearly see how these cumulative experiences have shaped my growth not only as a researcher, but also as someone committed to supporting others on similar paths.

What makes this journey especially meaningful is its continuity. The same society that supported me as an early-career researcher is now part of a new chapter in which I support and guide the next generation. Attending the upcoming conference (in Seoul, South Korea) with my student is, for me, a full-circle moment, one that reflects both personal progress and the broader impact of sustained academic communities.

For early-career researchers, especially women in biostatistics, visibility, mentorship, and community matter deeply. My experience with IBS has shown me how powerful these elements can be when they come together. Growth in academia is often gradual and not always visible in the moment; however, in retrospect, the milestones become clear.

Sometimes, all it takes is one opportunity, one conference, one conversation, one moment of encouragement to set that journey in motion. I would like to sincerely acknowledge and thank Professor Loyiso Ngoxa for his continued support and encouragement of early-career researchers. I am deeply grateful to my long-time mentor and supervisor at a distance, Professor Henry Mwambi, for his sustained guidance, mentorship, and unwavering support throughout the years. I also appreciate the University of the Witwatersrand for granting me leave to pursue my Humboldt Fellowship. I extend my heartfelt thanks to Professor Marvin N. Wright (Leibniz Institute for Prevention Research and Epidemiology – BIPS, and the University of Bremen, Germany) for hosting me during the fellowship and for fostering a supportive research environment. Finally, I would like to acknowledge Dr Wende Safari (London School of Hygiene & Tropical Medicine) for her encouragement and support. Although we entered the early-career research journey at different times, we were able to encourage and learn from one another as we navigated the opportunities and challenges of academic life.

I further acknowledge the support of the Horizon Institutes through the DATA project, which continues to contribute meaningfully to my research development. In addition, I am grateful to have established the Survival Analysis and Machine Learning Research (SAMLr) Group at Wits (<https://www.wits.ac.za/stats/research-and-publications/samlr-group/>), an initiative aimed at fostering collaboration and advancing research in this space.

I also appreciate the support of the Humboldt Foundation and the Bayer Foundation, along with the many individuals and organizations that have contributed to my journey. Their encouragement and investment in early-career development have played a vital role in shaping my path, and I hope to extend the same support to others in the years to come.

International  
Biometric  
Conference

**IBC**

12-16 July 2026

**Seoul, South Korea**

**Step into one of the world's premier gatherings for statisticians, mathematicians, data scientists, and biological researchers.**

IBC 2026 brings together a global community for five days of learning, collaboration, and discovery — all in the vibrant heart of Seoul.

**Reserve your spot today to join 800+ colleagues at IBC2026.**



**Register Now**

[internationalbiometricsociety.regfox.com/33rd-international-biometric-conference-2026](https://internationalbiometricsociety.regfox.com/33rd-international-biometric-conference-2026)

## Conference Highlights at a Glance

### 40+ Hours of Scientific Programming

From plenaries to posters, the scientific program features cutting-edge research, innovative methodologies, and cross-disciplinary insights.

### 27+ Hours of Networking Opportunities

Connect with peers, mentors, collaborators, and future colleagues. Whether during breaks, receptions, or interactive sessions, IBC 2026 is designed to spark meaningful conversations and lasting professional relationships.

- Welcome Reception
- Celebrate Korea! Dinner and Awards Program
- Young Statisticians' Reception
- Women in Statistics Coffee Social
- Regional Officers Reception
- Various Coffee Socials

### 20+ Hours of Social & Cultural Experiences

Experience Seoul through tours, cultural events, and social gatherings that bring the community together beyond the lecture halls.

### 120 Hours in One of the World's Most Dynamic Cities

Five days immersed in science, culture, and global collaboration — all set against the backdrop of Seoul's energy, innovation, and hospitality.

### Why Attend IBC 2026?

- A truly international community of researchers and practitioners
- A blend of traditional and innovative session formats
- A welcoming environment for students, early-career scientists, and established experts

# Editorial UPDATES

## BIOMETRICS



**Geert Molenberghs**  
*Biometrics Executive Editor*

### Recent papers in *Biometrics*

Papers that are forthcoming in *Biometrics* can be accessed at <https://biometrics.biometricsociety.org/home/papers-to-appear>. Among the resources available here, you will find a list of papers to appear in future issues of the Journal. You can also visit the journal via [Oxford University Press](https://www.oxfordjournals.org/). Many people have institutional access. However, all members have full access in the following way. Navigate to the [IBS](https://www.biometricsociety.org/) web pages. Once logged on, go to “Publications” and select “Biometrics.” You will have full access to the current and preceding volumes, whether articles are Open Access or not.

### Editorial Board News

#### 2027 – 2029 *Biometrics* Co-editor Search

The three *Biometrics* Co-Editors (CE) have staggered terms such that at the end of every year the term of one of them ends. Erica Moodie’s term will conclude on 31 December 2026, so her successor must be identified. We follow the geographical convention that has been in place since the inception of the three CE system, which dictates that at any time the three CEs are from Europe, North America, and locations outside of Europe and North America. Erica is from North America, so she should be succeeded by a new CE from that same constituency.

A search committee is in place, with the following composition: Geert Molenberghs, *Biometrics* Executive Editor, Chair (Belgian Region); Erica Moodie, *Biometrics* CE (ENAR); Jessica Kasza, *Biometrics* CE (Australasian Region); Cécile Proust-



Lima, *Biometrics* CE (French Region); Tarylee Reddy (South African Region); Ronald Geskus, EAC Chair (Netherlands Region & Vietnam); Paulo Canas Rodrigues (Brazilian Region), Debashish Ghosh (ENAR), Rebecca Hubbard (ENAR). The result of the search will be reported in a future column.

#### Associate Editor Panel turnover

The panel of Associate Editors is composed of about 100 colleagues who each serve two-year terms. This means that every 1 July a number of them end their terms. A number of Associate Editors are retiring on 1 July 2026 and we wholeheartedly thank them for their invaluable service to the journal’s peer review process, over the past two years and for several much longer than that: Abhirup Datta, Chongzhi Di, Guoqing Diao, Anke Hüls, Iuliana Ionita-Laza, Joy Jiang, Antonio Linero, Lei Liu, Qi Long, Susan Shortreed, Mats Stensrud, Chenguang Wang, Rui Wang, and Yize Zhao. The following colleagues will join the panel on the same date: Simon Bonner, Olivier Bouaziz, Scott Bruce, Cong Cao, Chixiang Chen, Ashkan Ertefaie, Guadalupe Gómez Melis, Chiung-Yu Huang, Hélène Jacqmin-Gadda, Alex Levis, Didong Li, Ziyi Li, Zhonghua Liu, Xiangyu Luo, Lu Mao, Christine Peterson, Kendra Plourde, Blair Robertson, Yue Wang, Brian Williamson, and Qihuang Zhang. We are grateful for their willingness to join and dedicate time and expertise to the journal’s peer review structure. At the same time, we are thankful for the service of our continuing Associate Editors and those who will be starting a new term.

#### *Biometrics* Editorial Board Meetings

In odd-numbered years, two virtual meetings are held for the benefit of the Associate Editors, both

continuing and incoming ones. These take place in July and August. In even-numbered years, such as 2026, there is a third meeting, conducted face-to-face during the IBC. This year, the face-to-face meeting is scheduled to take place on 14 July. The virtual meetings are scheduled for 7 July and 19-20 August (depending on time zone). As such, Associate Editors and other attendees have at least one meeting available at a convenient time, regardless of their location.

#### **Awards for *Biometrics* Authors and Referees – *Biometrics* Showcase Session at IBC2026**

In keeping with tradition, there will be a *Biometrics* Showcase Session during the IBC2026 in Seoul, dedicated to celebrating the journal in general, and in particular to awards in three categories.

#### **Best Paper Published in *Biometrics* by an IBS Member Awards**

Leading up to every IBC, the Co-Editors select a best paper for each of the immediately preceding years, i.e., for 2024 and 2025. The award-winning papers are:

- Bu, F., Kagaayi, J., Grabowski, M. K., Ratmann, O., and Xu, J. (2024). Inferring HIV transmission patterns from viral deep-sequence data via latent typed point processes. *Biometrics*, 80, ujad015.
- Wright, W. J., and Hooten, M. B. (2025). Continuous-space occupancy models. *Biometrics*, 81(2), ujad055. Both papers will be presented during the Showcase Session.

#### ***Biometrics* Test of Time Awards**

This is a brand new award category, proposed by the Editorial Advisory Committee when it met during the International Biometric Conference 2024 in Atlanta, Georgia. The two papers, published about ten years earlier, that have attracted the largest number of citations in the intervening decade, will be celebrated. In other words, we are looking at the papers published in 2014 and 2015. The winners are:

- Schmidli, H., Gsteiger, S., Roychoudhury, S., O'Hagan, A., Spiegelhalter, D., and Neuenschwander, B. (2014). Robust meta-analytic-predictive priors in clinical trials with historical control information. *Biometrics*, 70(4), 1023-1032.
- Daniel, R. M., De Stavola, B. L., Cousens, S. N., and Vansteelandt, S. (2015). Causal mediation analysis with multiple mediators. *Biometrics*, 71(1), 1-14.

#### **Awards for Excellent Refereeing for *Biometrics***

As of 2022, the three Co-Editors identify three colleagues that have done outstanding refereeing work for the journal over a given calendar year. The 2022 and 2023 picks were honored during the IBC2024 in Atlanta.

During the IBC2026, the six referees selected for 2024 and 2025 will be celebrated: Sarah Samorodnitsky, Hiroshi Mamiya, Florian Stijven, Chien-Wei Lin, Ashkan Ertefaie, and Lan Wen.

**Geert Molenberghs**

*Biometrics Executive Editor*

# **THE JOURNAL OF AGRICULTURAL, BIOLOGICAL, AND ENVIRONMENTAL STATISTICS (JABES)**



**Murali Haran**  
*Editor-in-Chief*

The winners of the Best Paper published in *JABES* in 2025 are Non-stationary Extensions of the Diffusion-Based Gaussian Matérn Field for Ecological Applications by Juan Francisco Mandujano Reyes, Ian P. McGahan, Ting Fung Ma, Anne E. Ballmann, Daniel P. Walsh, & Jun Zhu.

#### **Some journal statistics:**

- Submissions: 453 (increase from 335 in 2024 and 311 in 2023)
- Articles Published Online: 44 (against a budget of 51)
- Article Downloads: 176,886 (increase from 143,511 in 2024)
- Average Time to First Decision: 18 days

- Open Access (OA) Articles: 19 (all funded by Transformative Agreements)
- Contributions by Region and Institution (2023–2025)
- Top Contributing Countries: United States (74), United Kingdom (21), Italy (20), Spain (15), and Canada (13).
- Top Contributing Organizations: KAUST, Saudi Arabia (8); Sapienza University of Rome, Italy (6); Michigan State University, USA (5); Texas A&M University, USA (5); and University of Valencia, Spain (5).
- Associate Editor Geographic Distribution  
The editorial board includes 42 Associate Editors across 18 countries, including 22 from the USA, 4 from the UK, 3 from Italy, 2 each from Germany and Spain, and 1 each from Australia, Brazil, Canada, Chile, China, India, Indonesia, Japan, Portugal, Saudi Arabia, South Korea, and Sweden.

either new spatial AI methodology motivated by climate applications or sophisticated applications of spatial AI to authentic climate-science problems. Submissions will undergo the standard rigorous peer review process of the journal, and are limited to authors who presented a talk at the workshop.

Guest editors: Matthias Katzfuss (University of Wisconsin–Madison), Nadja Klein (Karlsruhe Institute of Technology), Brian Reich (North Carolina State University)

Submission process: Papers should be submitted through the *JABES* website following the journal’s submission guidelines.

Tentative timeline:

- Call for papers issued: May 2026
- Submission deadline: 1 September 2026
- First round of reviews completed: December 2026
- Second submission: February 2027
- Reviews completed: May 2027
- Publication of special issue (tentative): Late 2027

### Special Issue on contributions of spatial AI to climate research

This special issue will highlight contributions of spatial AI to climate research presented at the 2026 Dagstuhl Seminar. Papers should fit the [Aims and Scope](#) of *JABES*, which may include

# Advertise with Us!

Do you have vacancies to fill? Are you running a promotion, courses, selling software, or consultancy services of interest to statisticians, biometricians, and mathematicians? Consider advertising on the IBS Website and or in the Biometric Bulletin. Click below for additional information and ad rates. Please email the International Biometric Office ([ibs@biometricsociety.org](mailto:ibs@biometricsociety.org)) with any questions. Note that exciting changes are coming to the IBS website in 2026, so we encourage you to become a part of our program now. More information is forthcoming!

Run of Site Banner Ad Rates	1 Month	3 Months	6 Months	1 Year
Inter Med. Biometric	\$250	\$750	\$1,250	\$2,000
Inter Med. Biometric	\$250	\$750	\$1,250	\$2,000
Inter Bottom	\$200	\$600	\$1,000	\$1,600

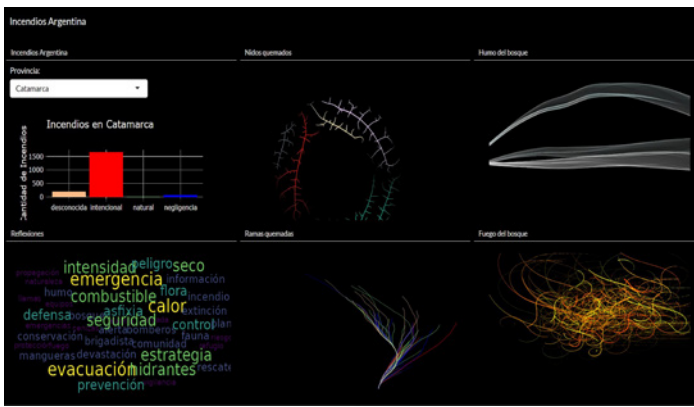
  

Ad Rates (Members save 10% off published rates)	1x	2x	3x	4x
EMERGENCY	\$1,000	\$2,000	\$3,000	\$4,000
Full Page	\$1,000	\$2,000	\$3,000	\$4,000
Half Page	\$500	\$1,000	\$1,500	\$2,000
Quarter Page	\$250	\$500	\$750	\$1,000
Column Right	\$150	\$300	\$450	\$600
Column Left	\$150	\$300	\$450	\$600
Column Bottom	\$150	\$300	\$450	\$600

## Advertising Specs & Rates - 2026

We are asking members to submit interesting visualizations or images related to their work that can serve as feature art in the *Biometric Bulletin*.

If the images or artwork you possess are already published online, IBS will link to the indicated publications or websites in the Bulletin captions, to ensure proper credit is provided. Please submit your high-resolution artwork (minimum 300 dpi), including caption and URL references, by emailing [ibs@biometricsociety.org](mailto:ibs@biometricsociety.org).



Interactive dashboard developed in R showing the current status of fires across provinces in Argentina. Visualizations update dynamically based on the selected province, displaying the number of reported cases and their classification.  
[https://teresaboca.shinyapps.io/Incendios\\_Argentina/](https://teresaboca.shinyapps.io/Incendios_Argentina/)

Photo Credit: Contributed by IBS member Teresa Boca.

This is a paid ad from StataCorp

# Built for biostatisticians. Designed for results.

STATA 19

With new features that refine your workflow, enhance your research, and save you time, Stata 19 ensures accurate, dependable, reproducible results every time.

[stata.com/ibs-stata19](https://stata.com/ibs-stata19)

The screenshot displays the Stata 19 interface with several windows open. The main window shows a 'Bayesian variable selection' output for a diabetes dataset, including a table of coefficients and a command window with the following code: `bayesselect diabetes age sex bmi bp serum1-serum6 in 1/441, rseed(19)`. Other windows show a 'Marginal interval-censored Cox regression' plot, a 'Heatmap' of monthly average temperatures, and a 'Data' window showing the structure of the diabetes dataset.

	Mean	Std. dev.	NCSE	Equal-tailed [95% cred. interval]	Inclusion coef.	
diabetes						
serum5	-.336779	-.0671548	.0013409	-.2182886	-.4861579	0.73
bmi	-.3284608	-.0414561	.0004504	-.247525	-.4087823	0.72
bp	-.1900507	-.0411339	.0004625	-.1096927	-.2718276	0.59
sex	-.1279497	-.0398828	.0005348	-.2048249	-.0483972	0.50
serum1	-.125876	-.127556	.0032762	-.4417064	-.0527829	0.44
serum3	-.0923977	-.0768004	.0051211	-.2375419	-.046901	0.42
serum4	-.0488951	-.0733476	.0017154	-.0749584	-.2131595	0.32
serum2	-.0188206	-.1037191	.0023902	-.1479433	-.2834479	0.32
serum6	-.0300323	-.0361344	.0006945	-.0388845	-.1095077	0.26
age	-.001932	-.0282981	.000283	-.0023048	-.0574765	0.20

# *STR*engthening Analytical Thinking for Observational Studies (*STRATOS*): **A SHORT SUMMARY OF ‘AN OVERVIEW AND RECENT DEVELOPMENTS IN THE ANALYSIS OF MULTISTATE PROCESSES’**

Malka Gorfine, Department of Statistics and OR, Tel Aviv University, Israel

Richard J. Cook, Department of Statistics and Actuarial Science, University of Waterloo, Waterloo, Ontario, Canada

The paper by Gorfine et al. [1] describes the foundations of multistate modeling and illustrates the utility of this framework for studying dynamic disease processes involving distinct states of health when the times of transitions and paths taken carry scientific meaning. States may be defined to represent stages of a disease (e.g. remission, recurrence), hospitalization, discharge, or death. The review is motivated by the need for statistical guidance in such settings, where disease histories are often more complex than they are with a single time-to-event outcome.

The dynamic aspects of multistate processes are governed by transition intensities defined for each pair of states. These intensities represent the instantaneous risk of moving from a currently occupied state to another, given the prior history of the process, and have conceptual links to the hazard function in survival analysis. The paper explains the various ways the process history may affect the transition intensities, thereby defining different classes of models. In simple Markov models the risk of a transition depends only on the current state occupied whereas in semi-Markov models it also depends how long the current state has been occupied. More general models can incorporate richer dependencies on the process history and

are often warranted for chronic diseases that feature both trends in time since disease onset, as well as recurrent periods in which symptoms are exacerbated.

The paper explains how familiar methods and software for survival analysis can be easily adapted for the analysis of multistate processes under right censoring. The Nelson–Aalen estimator is used to estimate cumulative transition intensities and the Aalen–Johansen estimator is used to estimate transition probabilities and state-occupancy probabilities over time. These quantities allow investigators to answer clinically meaningful questions such as the probability of being recurrence-free at a given time, the probability of death after relapse, or the expected amount of time spent in a given health state. The authors emphasize that these descriptive quantities are often more interpretable than transition-specific intensities, especially for reporting findings in applied medical research.

Regression modeling for multistate processes is also discussed. Intensity-based regression models, often formulated through multiplicative specifications for transition intensities analogous to the form of the Cox proportional hazards model, allow covariates to affect different transitions in different ways. This is useful because a predictor may increase the risk of disease onset while having little or no effect on mortality after onset. The paper carefully derives the likelihood framework needed when covariates are time-dependent and when censoring is present. A key message is that valid inference hinges on

assumptions about the censoring and covariate processes, especially when these processes may themselves be informative. This connects multistate modeling to broader joint-modeling problems in which marker trajectories, censoring mechanisms, and disease evolution may all be interrelated.

Beyond intensity-based approaches, the paper highlights the descriptive appeal of methods where covariate effects are modeled directly on marginal features such as state occupancy; pseudo-values can play a role here. These methods target quantities such as state-occupancy probabilities or restricted mean sojourn times directly, rather than building them indirectly through a full system of transition intensities. This is especially appealing when the scientific question concerns overall probability of occupying a state rather than the local behavior of transition rates. The pseudo-value approach is presented as a promising bridge between multistate modeling and marginal inference, although the authors note that important theoretical and practical issues remain open.

Another important area covered is when processes are only under intermittent observation. In many settings the exact transition times are not observable and instead the state is only ascertainable at clinic visits or other assessment times. Methods for handling such settings typically require stronger assumptions such as Markov assumptions with time-homogeneous or piecewise-constant intensities; modified likelihoods can be obtained for such settings and software such as the R package *msm* can be used to estimate transition intensities under intermittent observation. The psoriatic arthritis example in the paper illustrates how even when the exact timing of disease progression is unknown, multistate models can still estimate long-term state occupancy and identify risk factors associated with faster progression. The review also surveys random-effects and frailty approaches for capturing unobserved heterogeneity and dependence. These models are especially relevant when latent subject-specific factors induce dependence among a subject's event times. The authors discuss both conditional and marginalized frailty formulations for illness-death models under Cox-type regression, as well as accelerated failure time alternatives with shared random effects. Their discussion makes clear that unobserved heterogeneity is not merely a technical detail, but a substantive issue that can alter interpretation, prediction, and model fit.

A practical strength of the paper is its attention to implementation. The authors summarize available software in R and Python. This reinforces one of the review's broader goals: to connect modern methodology with tools that applied researchers can use. The paper repeatedly stresses the close relationship between multistate likelihoods and standard survival-analysis machinery, which lowers the barrier to adoption.

The paper concludes with a balanced assessment of the strengths and limitations of multistate modeling. Multistate models provide a coherent language for representing complex disease pathways, handling competing outcomes, and producing clinically interpretable predictions. At the same time, careful consideration is warranted when defining states, establishing the state space, specifying time scales, and ensuring the dependence structures are accounted for. The effect of model misspecification can be appreciable, especially when important covariates are omitted or when history dependence is oversimplified. The paper identifies several directions for future work, including causal inference, model validation, more flexible dependence structures, and machine-learning methods adapted to multistate data.

Overall, the paper serves as both a conceptual overview and a methodological guide. Its main message is that multistate models offer a powerful framework for understanding processes that unfold over time involving multiple transient and possibly absorbing states. Since survival analysis may be viewed as a special kind of multistate analysis involving two states (alive and dead), it is natural that related software enables fitting of complex multistate models. For researchers studying chronic disease processes the paper and related references provide a strong practical foundation for choosing, fitting, and interpreting multistate models.

## References

1. Gorfine, M., Cook, R.J., Andersen, P.K., Therneau, T.M., Joly, P., Putter, H., Perme, M.P. and Abrahamowicz, M., 2025. An overview and recent developments in the analysis of multistate processes. *Statistics in Medicine*.

International  
Biometric  
Conference

**IBC**

12-16 July 2026

Seoul, South Korea

# Discover the Heart of IBC 2026: The Scientific Program

At the center of the International Biometric Conference is a scientific program designed to inspire, challenge, and connect the global community of statisticians, mathematicians, biological scientists, and interdisciplinary researchers. IBC 2026 brings together traditional excellence and innovative new formats to create a dynamic, world-class learning experience in Seoul.

**Reserve your spot  
today to join 800+  
colleagues at IBC2026.**



**Register Now**

[internationalbiometricsociety.regfox.com/33rd-international-biometric-conference-2026](https://internationalbiometricsociety.regfox.com/33rd-international-biometric-conference-2026)

## **Short Courses: Deep Learning for the Curious Mind**

Start your conference with immersive short courses led by internationally recognized experts. These focused sessions offer hands-on learning and practical insights into emerging methods, modern statistical tools, and cutting-edge applications in the biosciences.

Whether you're expanding your skill set or diving into a new specialty, short courses provide the perfect foundation for a powerful week of scientific discovery.

## **Invited Sessions: Thought Leaders on the Global Stage**

IBC 2026 features invited sessions that showcase the forefront of biostatistics and biometrics. These sessions bring together leading voices from around the world to explore high-impact topics, breakthrough methodologies, and the future of data-driven biological science.

Expect bold ideas, cross-disciplinary perspectives, and conversations that shape the direction of the field.

## **Contributed Sessions: Where the Community Shines**

The strength of IBC lies in its diverse and vibrant community. Contributed sessions give researchers, practitioners, and students the opportunity to share their work, exchange ideas, and spark new collaborations.

From innovative applications to methodological advances, these sessions highlight the creativity and rigor that define the biometric sciences.

## **A Program Designed for Discovery**

With a mix of session formats, key topics, and scheduled events, the scientific program empowers attendees to tailor their experience and make the most of every day in Seoul. Explore the full schedule, plan your path through the conference, and get ready for a week of learning, connection, and inspiration.



# Regional NEWS

## Austro-Swiss (ROeS)



The Austro-Swiss Region (ROeS) welcomes Dominik Heinzmann as its new president for 2026 and 2027 and also wants to thank Sereina Herzog for her outstanding service as president in 2024 and 2025 including organizing the exciting and successful ROeS conference 2025 in beautiful Graz, Austria.

Dominik Heinzmann is currently the Head of Biostatistics for Neurology at Roche/Genentech in Basel, Switzerland. He has more than 16 years of experience in applying innovative statistical designs and analysis of clinical trial and real-world data to support better decisions throughout the drug development cycle, resulting in several approvals of breakthrough medicine for patients

Dominik holds a PhD in Applied Mathematics from the University of Zurich, and an MSc in Mathematics from the Swiss Institute of Technology Lausanne (EPFL). He published more than 30 papers in the field of applied mathematics, statistics, epidemiology and medicine.

Dominik's vision: Together with the ROeS executive board (newly elected secretary Michael Vock, University of Bern, newly elected Treasurer Georg Zimmermann, Paris Lodron University Salzburg, and previous president Sereina Herzog, Medical University

of Graz) and the entire ROeS community we will focus on the following three areas:

- 1) Continuing to promote statistical excellence by supporting our different sections (Basel Biometric Section, Vienna Biometric Section, Styria-Carinthia Section) as well as the working group Adaptive Designs and Multiple Testing Procedures (ADMTP).
- 2) Leading the organization of the upcoming ROeS conference in 2027 in Switzerland (date and location TBD), support the [CEN 2026](#), and last but not least prepare the organization of the IBC2028 in Basel.
- 3) Building on 1) and 2), contributing to the definition of the new role of statisticians in academia and industry in the era of AI, quantum computing, and robotics, to further amplify our impact in a fast-changing world.

**Sonja Zehetmayer**  
*Biometric Bulletin Correspondent*

## British and Irish (BIR)

### Event - Current Topics in Designed Experiments

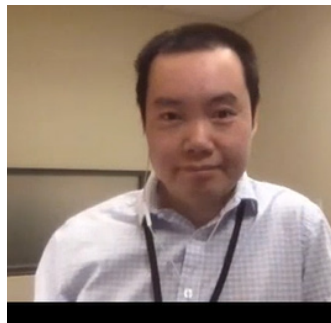
The British and Irish Region held a meeting at King's College London on 23 April 2026. Marking the Centenary of RA Fisher's landmark paper "The Arrangement of Field Experiments", the meeting focused on the design of experiments in modern biometrics. Fisher (1926) introduced, at least in

outline form, many of the methods that are still being extended today, including randomization and its relationship with data analysis, replication, blocking, factorial treatment structures and confounding.



Three speakers described their recent work. First, Peter Goos (KU Leuven) described a flexible algorithm for sample size and design optimization in the presence of transition costs, motivated by forage harvester experiments and pilot plant experiments from the food industry, in both of which major parts of the cost of experimentation were connected with changing factor levels. Rebecca Walwyn (University of Leeds) then described the use of factorial designs for clinical trials of practitioner-delivered interventions, with the feature that therapist effects were considered as treatment effects, but also random effects in complex multi-stratum and sometimes multi-tiered designs. Finally, Simon Bate (GlaxoSmithKline) described using Hasse diagrams to understand complex experimental designs used in the pharmaceutical industry often involving both complex treatment structures, such as incomplete factorial designs and complex block structures involving both crossing and nesting. All talks could trace their roots to Fisher's foundational paper and a lively discussion followed from the appreciative audience. The meeting was followed by the Fisher Memorial Lecture.

### Event - Genomics



The IBS-BIR genomics event took place online on 25 February 2026 and featured presentations on methods for interpreting genetic variants associated

with breast cancer risk, focusing particularly on BRCA1 and BRCA2. Kyriaki Michailidou, Associate Professor and Head of the Department of Biostatistics at The Cyprus Institute of Neurology and Genetics gave a talk titled "Utilizing large scale case-control data for variant classification in breast cancer risk genes" which discussed how genetic variation contributes to breast cancer, ranging from rare high-risk mutations to common low-risk variants, and highlighted the clinical challenge of variants of uncertain significance (VUS), which create ambiguity in patient care. Their work focused on improving variant classification using large-scale case-control data, introducing a Bayesian method called the case-control likelihood ratio (ccLR). This approach overcomes limitations of traditional statistical methods for rare variants and provides substantially more evidence for classifying variants, showing strong agreement with existing clinical databases. They also described extensions of this method to detect variants with reduced penetrance and efforts to scale analyses across large biobank datasets. Bing-Jian Feng, Research Associate Professor at the Department of Dermatology and Huntsman Cancer Institute, University of Utah, gave a talk titled "Using pedigrees to interpret the pathogenicity of variants."

The talk focused on co-segregation analysis using family pedigrees, explaining how the inheritance of variants alongside disease can provide evidence for pathogenicity. They compared simpler counting methods with more robust likelihood-based approaches, emphasizing the importance of accurately modeling penetrance, which varies with age and other factors. Their talk highlighted both the strengths and limitations of pedigree-based analysis, particularly for complex diseases like cancer, and showed how incorrect assumptions can lead to misclassification. Together, the talks illustrated complementary statistical and genetic approaches aimed at improving the interpretation of rare variants and reducing uncertainty in clinical genomics.

### Event - Reproducibility

The [Annual Young-ISA](#) Webinar ran from 12:00 until 14:30 on 15 April 2026 and focused on "The Role of Statisticians in Reproducibility". This was a joint event with the British and Irish Region of the International Biometric Society. There were four invited speakers: Prof. Anne-Laure Boulesteix (Ludwig Maximilian University Munich), Dr. Isabella Gollini (University College Dublin), Dr. Neil Wright (University of Oxford), and Dhorasso Junior Temfack Nguetack (Trinity College Dublin) who each

delivered talks on their research and participated in a discussion. The event had 67 registrations.

**Kirsty Hassall**

*Biometric Bulletin* Correspondent

## Central American and Caribbean (RCAC)

The International Biometric Society (IBS) Central American and Caribbean (RCAC) region reports that a one-day Math Fair was held at The University of the West Indies (UWI), St Augustine Campus in February 2026 on the theme “Mathematics as the Engine in an AI-Driven World.” Each year the UWI organizes this Math Fair to raise awareness for careers in Mathematics and Statistics among secondary school students. This year, around 3000 students and teachers from secondary schools across Trinidad and Tobago attended the fair. Prof. Adesh Ramsubhag, Dean, Faculty of Science and Technology in his opening address highlighted mathematics and statistics as the key driver of the Artificial Intelligence revolution. Prof. Duraisamy Saravanakumar, Director of Graduate Studies and Research, expressed hope that young minds will apply their mathematical skills to solve problems of climate change, food insecurity and economic shifts, while Prof. Sreedhara Rao Gunakala, Head of the Department of Mathematics and Statistics at UWI, emphasized that mathematics was not an optional subject but an essential one needed to solve global problems.



(L–R) Dr. Akhenaton Daaga; Dr. Philbert Morris; Mr. Asad Mohammed; Professor Sreedhara Rao Gunakala; Professor Adesh Ramsubhag; and Dr. Peter Smith at the The UWI Math Fair 2026.

During this quarter, several members made presentations at conferences and published research papers in peer-reviewed journals. Prof. Adriana Pérez presented at the Conference of Texas Statisticians (COTS) in April, 2026 on agreement measures to classify 2019 U.S. Medicare Adults

with Parkinsonism. Ms. E. Sonron, a PhD candidate in Statistics under the supervision of IBS member Dr. Vrijesh Tripathi, presented at the Caribbean Future of Science Symposium 2026 in March 2026 in Barbados. Ms. A. Rajballie, PhD candidate under the supervision of Dr. Vrijesh Tripathi, published a paper on ensemble and hybrid machine learning models for seasonal water consumption forecasting under climate variability on data from Trinidad and Tobago. Prof Oscar Espinosa had two publications, one on patterns of sex differences in cancer mortality in Colombia and another on Colombia's current health system crisis. Full details of the conference presentations and publications are listed below:

Pérez, A., Smith, L., Valencia, S., Pham Nguyen, T.P. Willis, A. (2026). Agreement Measures to Classify 2019 U.S. Medicare Adults with Parkinsonism within Academic and Non-academic Movement Disorders Centers. Oral presentation at the Conference of Texas Statisticians (COTS) 2026, April 10/2026. Austin, TX, United States.

Sonron, E.A., Seetaraman, H., and Tripathi, V. Trend analysis of Cataract Burden in Trinidad and Tobago from 1990 to 2021 using Joinpoint and age-period-cohort models. Oral presentation at the Caribbean Future of Science Symposium 2026, 30 March 2026, Barbados.

Rajballie, A., Tripathi, V., Tyagi, S., and Chinchamee A (2026). Ensemble and Hybrid Machine Learning Models for Seasonal Water Consumption Forecasting Under Climate Variability. *Civil Engineering Journal* 12(2): 743–762. <https://doi.org/10.28991/CEJ-2026-012-02-019>

Espinosa, O., Smith, A., Bejarano, V., Puentes, G., Pino, L., Wiesner, C., de Vries, E., Cardona, A., & Friebel, R. (2026). Patterns of sex differences in cancer mortality in Colombia: a population-based analysis, 1980–2023. *The Lancet Regional Health - Americas*, 58, 101465. <https://doi.org/10.1016/j.lana.2026.101465>

Espinosa, O., Estrada-Orozco, K., García-Ruiz, J., Vargas-González, J., Mora-Moreo, L., Bolívar, M., Mesa-Melgarejo, L., Arias, C., Prada, S. & Rodríguez-Lesmes, P. (2026). Narratives, evidence, and the material reality of Colombia's current health system crisis. *Medicina*, 48(1), 171-175. <https://doi.org/10.56050/RM-48-1-21>

**Vrijesh Tripathi, PhD**

*Biometric Bulletin* Correspondent

## French (FR)

The French Region of the IBS (“Société Française de Biométrie”, SFB) held its board meeting virtually on 23 February 2026 at 4pm CET. The newly elected board is composed of Boris Hejblum (Inserm, Bordeaux) as president, Anne Thiébaud (Inserm, Villejuif) who continues as treasurer, and Cécile Proust-Lima (Inserm, Bordeaux) as secretary.

### Upcoming events include:

- A dedicated Channel Network session during the 33rd International Biometric Conference in Seoul in partnership with the IBS regions of Belgium, Great Britain/Ireland, and the Netherlands;
- The biennial Daniel Schwartz dissertation prize, which rewards one or two theses in biometrics defended between July 2024 and June 2026, to be awarded during the Young Researchers Day of the French IBS region in early 2027. Applications are open until 1 September 2026;
- The upcoming conference “From Biostatistics to AI for Healthcare” organized by the Conservatoire National des Arts et Métiers (CNAM) on 1 September 2026;
- The 11th Channel Network Conference (CNC), in partnership with the IBS regions of Belgium, Great Britain/Ireland, and the Netherlands, to be held in Rennes (western France) in 2027;
- The French Region will participate in organizing the 34th International Biometric Conference in Basel (Switzerland) in partnership with the Austrian-Swiss and German regions of the IBS. Members of the SFB, along with members from other organizing regions, will be running an information/exhibition stand during the 33rd International Biometric Conference in Seoul.

More information can be found on the website of the French Region:

<https://sfb.pages.math.cnrs.fr/asso/>

**Émeline Courtois**

*Biometric Bulletin* Correspondent

## German (DR)

### Workshop of the Biometrics Teaching and Didactics Working Group

“Between Minima and Maxima: Teaching Statistics in Applied Degree Programs”

The Biometrics Teaching and Didactics Working

Group hosted its annual meeting and workshop on 26 February 2026, at Hannover University of Applied Sciences and Arts. Under the title “Between Minima and Maxima,” 25 participants—primarily instructors from applied degree programs—discussed current approaches to biostatistics education. Led by Ursula Berger (LMU Munich) and Carolin Herrmann (Heinrich-Heine-Universität Düsseldorf) and organized by Cornelia Frömke (Hochschule Hannover), the workshop provided an opportunity to discuss pedagogical challenges, the use of software, and student motivation.

The presentations addressed the diverse challenges of teaching biostatistics to students in applied degree programs. Without a practical connection, understanding becomes difficult, and students are less willing to engage with statistics. Björn-Hergen Laabs and Lea Louisa Kronziel presented a curriculum in which theory and practice are integrated through, among other things, projects conducted alongside lectures. As Lára Hallsson reported, when teaching is conducted online, numerous aspects—such as synchronous and asynchronous online settings, handling questions, examination procedures, and the pedagogical approach for a statistics course—must be reconsidered. Among other things, Hubert Merkel emphasized the need to learn new methodological concepts by building on prior knowledge and critically re-examining the so-called “statistics zoo” of t-tests, ANOVAs, and correlations. The methodology presented in teaching must be application-oriented and interpretable. Lutz Mattner reported on the possibilities regarding, for example, binomial and related probabilities or confidence intervals. Presenting two different approaches that lead to the same goals can also be helpful for students. Max Pilz illustrated this using the “two cultures” of statistical learning (algorithmic and data-modeling) and in software (R and Python).

Ursula Berger discussed new approaches to statistics education, using examples to illustrate the teaching of critical reasoning. Henrike Weinert introduced an interdisciplinary module on data literacy and presented the course content and software skills covered. For analyses to be reproducible, research data management (RDM) is essential. Klaus Jung and Max Hassenstein demonstrated ways to establish RDM as an integral part of teaching, thereby introducing students to scientific standards at an early stage. Students must also learn to identify methodological errors. Elisabeth Yuu presented a teaching approach in which students deliberately create flawed case studies and discuss the

resulting “mishaps” that arise when applying statistical and machine learning methods.

A major challenge in teaching is often the wide range of prior knowledge among students. Iris Burkholder presented a blended-learning program designed for students in applied degree programs, while Dennis Holzwardt, Anika Großhennig, and Sören Wiesner shared their teaching experiences with life sciences students who have a wide range of prior knowledge regarding statistical methods and statistical software. The challenge remains to keep students engaged. Jochen Kruppa-Scheetz demonstrated how this can be achieved, for example, through improvisation in the classroom.

We would like to express our sincere thanks for the lively participation, the inspiring presentations, and all the fruitful discussions, as well as for the excellent on-site organization. If you'd like to join the working group, please feel free to contact us. We also plan to continue offering annual workshops and welcome your suggestions.

Contact: Ursula Berger ([ursula.berger@lmu.de](mailto:ursula.berger@lmu.de)), Carolin Herrmann, Cornelia Frömke



*Participants of the meeting on teaching (Photo: Carlotta Steinkamp).*

**Ursula Berger**

## Upcoming Meetings

**1 June 2026**, half-day courses “Practitioner’s View of Adaptive Designs” and “Designing better trials: Advanced randomization methods for modern clinical research”

### **23-26 June 2026, in Strobl (A)**

Summer School 2026 “Surrogate Endpoint Evaluation in Clinical Trials.” With Geert Molenberghs (Hasselt & Leuven), Ariel Alonso (Leuven) and Wim Van der Elst (J&J).  
Flyer: <https://biometrische-gesellschaft.de/pdf/sommerschule-strobl-2026.pdf>

### **25-26 June 2026 at Limburgerhof**

Workshop “100 Years of statistical design of experiments: Developments in agricultural trials from R.A. Fisher until today” of the working group Agricultural Trials Info: <https://biometrische-gesellschaft.de/ag/landwirtschaftliches-versuchswesen.html>

### **26-27 November 2026, in Ingelheim**

Workshop of working group Bayesian Methods on “Bayesian statistics in medical research” with a tutorial by Marco Scutari on “Bayesian networks in R with examples.” Info: <https://biometrische-gesellschaft.de/ag/bayes.html>

### **27 November 2026, in Stuttgart**

Fall meeting of the working group Pharmaceutical Research

### **28 February to 3 March 2027, in Düsseldorf**

73rd Biometric Colloquium of the German Region.

### **20-24 March 2028, in Bremen**

74th Biometric Colloquium as part of the DAGStat Conference

**Reinhard Vonthein**

*Biometric Bulletin Correspondent*

## Japan (JR)

### **The 2026 Annual Meeting of the Biometric Society of Japan**

The 2026 Annual Meeting of the Biometric Society of Japan (BSJ) was held on 15-16 May

2026 at Matsue Terrsa, Shimane, Japan. A special session on “cutting-edge privacy-preserving technologies for medical data” was organized. In addition, a tutorial titled “Statistical Modeling Using Extreme Value Theory: Challenges in Small-Sample Analysis” was organized jointly with the Japanese Society of Applied Statistics.

### **The 2026 Japanese Joint Statistical Meeting**

The BSJ is one of the six sponsoring organizations of the meeting and the 2026 Japanese Joint Statistical Meeting will be held on 6-10 September at Yokohama City University, Kanagawa, Japan. The BSJ is organizing some invited sessions.

### **The 2026 Biometric Lecture**

The first biometric lecture in 2026 was held on 24 April 2026 in hybrid format, combining online and onsite at the University of Tokyo, Tokyo, Japan,

where Dr. Daniel F. Heitjan (Southern Methodist University, USA) provided a great lecture, entitled “Clinical Trial Estimands.”

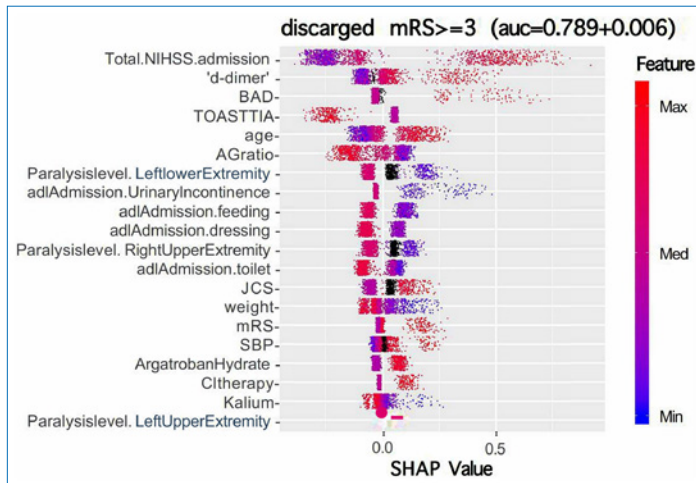
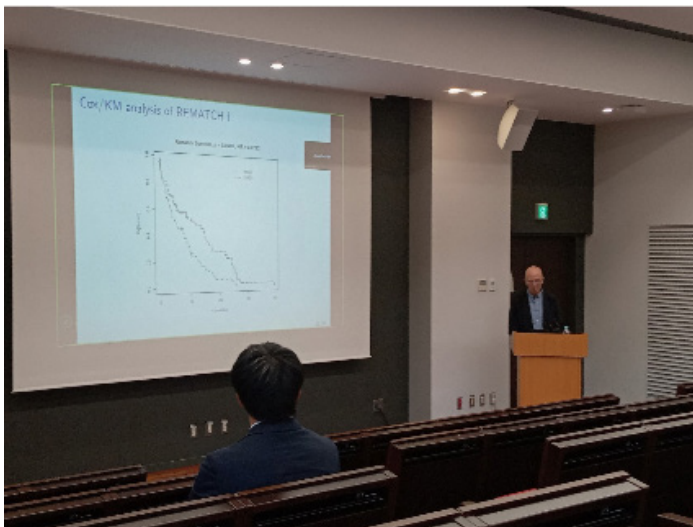


Figure was reproduced from the following paper.  
 Figure. SHAP summary plot for outcome prediction in cerebral infarction.

Each row corresponds to an explanatory variable, ordered from top to bottom by their contribution to the prediction. Each point represents an individual patient. Red indicates that the patient has a high value for the corresponding variable, blue indicates a low value, and black indicates a missing value.

Nohara Y (2025). *Theory and Practice of Real-World Data Analysis with Ensemble Tree Models and Shapley Additive Explanations*. *Japanese Journal of Biometrics*, 46(2), 135–151. <https://doi.org/10.5691/jjb.46.135>



**Meetings:**

**15-16 May, 2026**

The 2026 Annual Meeting of the Biometric Society of Japan  
 Matsue Terrsa, Shimane, Japan

**6-10 September 2026**

2026 Japanese Joint Statistical Meeting  
 Yokohama City University, Kanagawa, Japan

**Koji Oba**

*Biometric Bulletin* Correspondent

**Western North America (WNAR)**

**2026 WNAR/IMS meeting**

The 2026 WNAR/IMS meeting will be in Pullman, WA, at Washington State University from 14-17 June 2026. Highlights include the Presidential Invited Address by Dr. Ron Wasserstein, Executive Director for ASA, as well as short courses (listed below).

**Short Course 1:** Generative AI in Science: Tips and Tricks for increasing productivity without losing correctness, ownership, and creativity  
 Speaker: Dr. Valliappa Lakshmanan (Obin AI)

**Short Course 2:** An Introduction to Clinical Trial Design and Extensions to Interim Monitoring Methods  
 Speaker: Dr. Alex M. Kaizer (CU Anschutz)

Washington State University in Pullman offers a beautiful summer setting for a conference, combining the energy of a vibrant campus with the charm of the surrounding Palouse region. Warm, sunny days highlight the rolling hills of wheat fields that create one of the most picturesque landscapes in the Pacific Northwest. Attendees can enjoy strolls through WSU’s scenic campus, visit the renowned Bear Center or the Jordan Schnitzer Museum of Art, and experience the lively downtown Pullman with its local shops and eateries. Just beyond Pullman, opportunities abound for outdoor recreation, from hiking and biking trails to nearby rivers and lakes, making it an ideal destination where academic engagement meets the natural beauty and hospitality of Eastern Washington.

There will be short courses, a plenary lecture, invited and contributed sessions, young investigator events, and a Student Paper Award with oral sessions.

Email [programchair@wnar.org](mailto:programchair@wnar.org) or [wnar@wnar.org](mailto:wnar@wnar.org) with questions.

Registration information and other details about the meeting will be available on the WNAR web page <http://www.wnar.org/wnar2026>.

## 2026 WNAR Expanding Opportunities Workshop

The WNAR Expanding Opportunities Workshop is a satellite workshop held in conjunction with WNAR for underrepresented students, and it emphasizes the importance of mentorship and belonging in the health and science fields. In 2026, the workshop will be opened to high school students from the region's Native American tribal communities. It is organized by the WNAR Justice, Equity, Diversity, and Inclusion (JEDI) Committee and the WNAR Leadership Committee. Please consider donating to support this cause.

## IBS/WNAR Outstanding Impact Award and Lectureship

Join us at JSM 2026 in Boston to celebrate the awardee of the 2026 WNAR of the IBS Outstanding Impact Award and Lectureship and listen to their lecture. The awardee will be announced at the 2026 WNAR Annual Meeting in June, and will give a talk in the WNAR Outstanding Impact Award Lecture at the JSM on Tuesday, 4 August 2026, 8:30am. Nominations for the annual IBS/WNAR Outstanding Impact Award and Lectureship will be due in fall of 2026, so please start thinking about nominating for the 2027 award submission. The awardee of the 2026 Outstanding Impact Award will be announced at the WNAR meeting in June.

The WNAR of the IBS Outstanding Impact Award and Lectureship was established in 2021 to recognize an individual or a team, regardless of race, gender, sexual orientation, nationality or citizenship, who has made a significant impact on our society through service and/or research in development and application of statistical, mathematical, and data science theory and methods in the biomedical and environmental sciences. For example, awardees

may be individuals or teams whose research and/or service in biometrics has made a direct impact on serving underrepresented communities, promoting social justice, addressing environmental issues, or transforming scientific practice, and can comprise either a single contribution of extraordinary merit or an outstanding aggregate of contributions.

WNAR members, please plan to submit nomination materials for next year's award in November 2026. We look forward to recognizing our outstanding members with this honor. More information about the award process and upcoming deadlines can be found on the [WNAR award website](#).

**Jessica Minnier**  
WNAR Secretary

## PROFESSIONAL EMPLOYMENT OPPORTUNITIES



### Do you have vacancies to fill? Consider advertising on the IBS Website!

Member individuals and their institutions can add a posting to this community for \$95. (Your posting stays up until your job is filled!)

For more information and other employment ad options, visit the [Advertising homepage](#). And you may reach out to [ibs@biometricsociety.org](mailto:ibs@biometricsociety.org) with any questions.





# Announcements & UPCOMING EVENTS

*IBS, IBS Regional and Non-IBS Events and Meetings*

## **8th International Conference on Advanced Research Methods and Analytics**

“AI, Internet Data and Computational Methods in Social Sciences”

Valencia, Spain

**1 - 3 July 2026**

<https://carmaconf.org>

## **IBC2026**

**12-16 July 2026**

COEX Magok

143 Magokjungang-ro, Gangseo-gu

Seoul, South Korea

[www.abc2026.org](http://www.abc2026.org)



Visit the IBC website for more information. Thanks to our colleagues from the Korean Region and the Korean Statistical Society for their support. And we encourage delegates to consider attending this year’s official IBC satellite conference, the PCIC.

## **The 8th Pacific Causal Inference Conference (PCIC 2026)**

**18-19 July 2026**

Tianjin, China

The PCIC Conference is an official satellite conference of the 2026 IBC in Seoul.

## **74th Biometric Colloquium in Conjunction as part of the DAGStat Conference**

IBS Region Event

**20-24 March 2028**

Bremen, Germany

## **View the full meetings calendar here!**

IBS, IBS Regional and Non-IBS Events and Meetings

Is something missing? Would you like to add your meeting or event to our calendar? If so, please send an email to [IBS@biometricsociety.org](mailto:IBS@biometricsociety.org) with the following information:

- Event Title
- Event Description & Location
- Event Category (IBS Regional Event, IBS Event, Non-IBS Event)
- Event Link
- Start/End Date

*Follow IBS* **ON SOCIAL MEDIA!**

