



YOU ARE INVITED

WE ARE BGS



BETA
GAMMA
SIGMA



THE INTERNATIONAL
BUSINESS HONOR SOCIETY

YOU ARE INVITED. WILL YOU JOIN BETA GAMMA SIGMA?

To help you answer that question, we've put together some information to show you the impact a [BGS membership](#) can have on your collegiate experience and your career.

Before we get started, there are two things you should know:

First, membership in Beta Gamma Sigma is highly exclusive. We recognize only the top students from the top 5% of business schools with programs accredited by the Association for the Advancement of College Schools of Business (AACSB). That means only a small fraction of the world's business students are eligible. (More information on accepting your membership can be found on page 15.)

Second, BGS membership is for life. Once you accept this invitation, you are a lifetime BGS member and you'll have access to all honor society benefits.

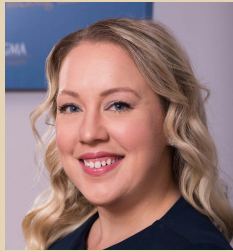
BGS members are known as the *"best in business."* That distinction doesn't stop at your induction, though. BGS provides its members with professional development, online and in-person networking, and thought leadership so they can continue being the "best in business" throughout their careers.

We look forward to having you join our growing list of notable BGS members. We are delighted to invite you to join, and we're looking forward to connecting with you for years to come. Congratulations!



A stylized black ink signature of Prof. Dr. Mariëlle Heijltjes.

Prof. Dr. Mariëlle Heijltjes
Universiteit Maastricht
Chair, BGS Board of Governors



A stylized black ink signature of Christina Allrich.

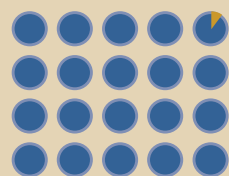
Christina Allrich
Acting Executive Director,
Beta Gamma Sigma

WE ARE... HONORED



ACHS MEMBER

As a certified member of the Association of College Honor Societies, Beta Gamma Sigma exhibits excellence in scholarship, service, programs, and governance. The Society adheres to stringent criteria for membership and carries with it the prestige of ACHS certification.



VERY SELECTIVE

When it comes to inviting students to join, Beta Gamma Sigma only accepts the best of the best. BGS exclusively inducts the top students from schools accredited by The Association to Advance Collegiate Schools of Business (AACSB), which only distinguishes the top 5% of business schools in the world.

With each new member, BGS develops a greater presence in the academic and business communities. As such, we have a reputation to uphold: **yours**. So we concentrate on programs that will honor your achievement and help you advance in your career.

We have another reputation to uphold, and that is of the institution itself. Because of the high standards for which BGS has come to be known, only a select group is invited into membership each year.

Business leaders know this about Beta Gamma Sigma. That's why, when they receive a resume with the BGS key, they're more likely to give it first consideration. In that way, BGS is just as important to your employer as it is to you.



A LEGACY

Beta Gamma Sigma was established in 1913 and has grown and changed as the world has grown and changed. But its standards have remained rigorous. Business leaders recognize BGS as an enduring mark of excellence.



A 100-YEAR PARTNERSHIP

Beta Gamma Sigma operates exclusively in AACSB-accredited programs. The AACSB is the premiere accrediting body for schools of business, founded in 1916—just three years after BGS.

OFFICIAL
INVITATION
ACCEPTANCE
INFO ON
PAGE 9

WE ARE... VALUED & VALUABLE



WORLDWIDE RECOGNITION

In 1989, BGS installed its first chapter outside the U.S. In the years since, BGS has grown to include members in more than 190 countries. As the global economy continues to drive business, such worldwide recognition is a must.



ACTIVE ALUMNI CHAPTERS

Beta Gamma Sigma has over 40 [Alumni Chapters and Networking Groups](#) around the world, helping lifetime members network, learn, and achieve for decades after graduation. Alumni groups give you access to the highest level of professional networking and support throughout your career.



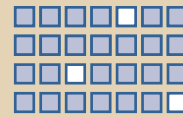
LIFETIME MEMBERSHIP. ONE-TIME FEE.

BGS membership doesn't end at graduation. You'll continue to have access to our exclusive programs and benefits, like the Ethical Leadership Certification Program (an online course in workplace ethics), Career Central ([description here](#)) and much more.



GRADUATE SCHOOL RESOURCES

Because BGS members are so elite, top graduate schools want to make it as easy as possible for you to apply for their program. Many institutions will waive application fees and entrance exam requirements, and some offer exclusive scholarships—just for BGS members.



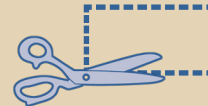
PROGRAMS FOR EVERY STAGE OF YOUR CAREER

Whether you are an undergraduate, graduate student or doctoral candidate, BGS has something for you. You'll find programs and events designed to help you connect with colleagues and business professionals around the globe. (And there are programs to support you after graduation, too.)



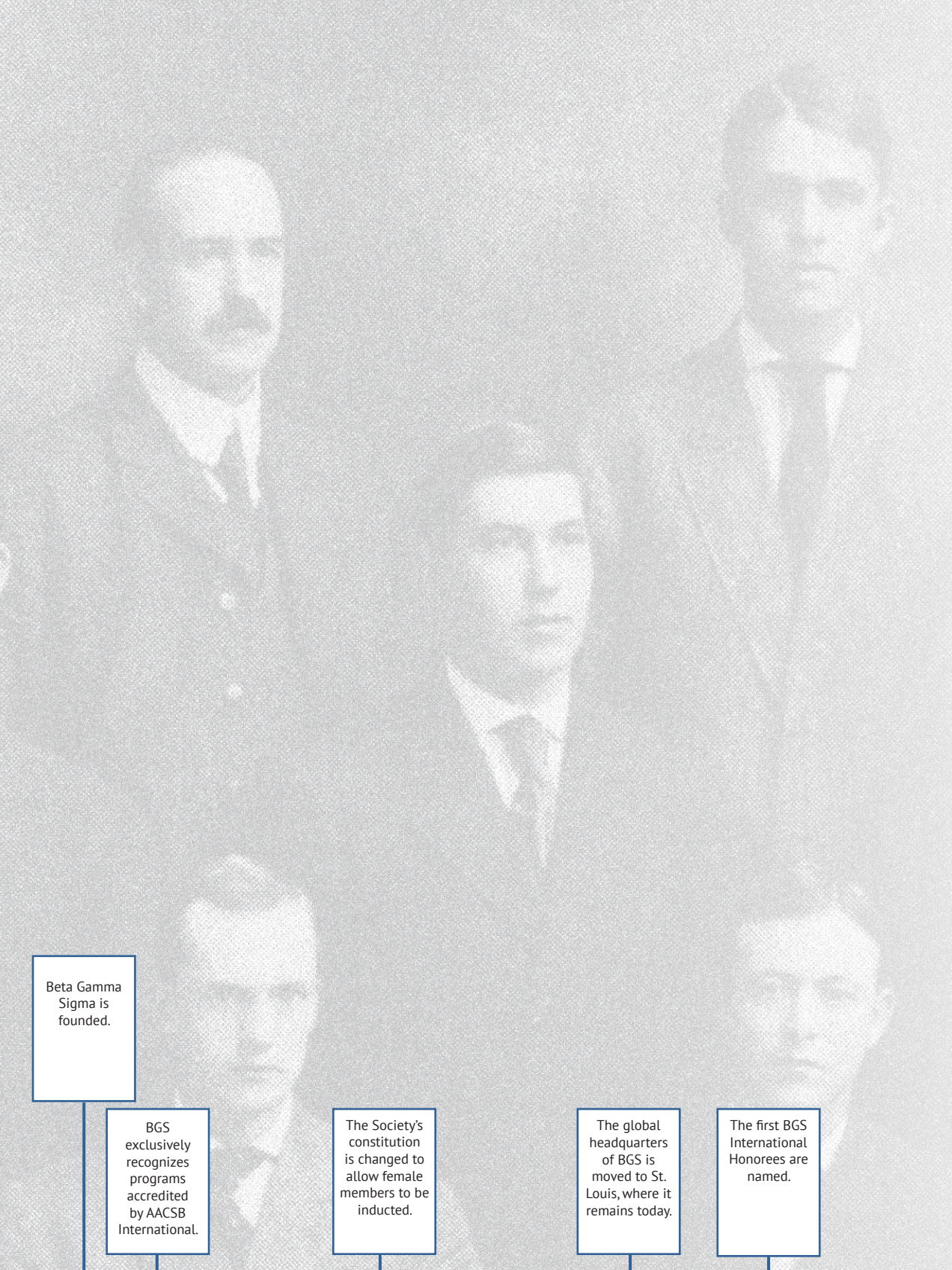
SUPPORT FOR ALL BUSINESS DISCIPLINES

BGS honors top performers **in all areas of business**. As you broaden your skills across many disciplines and grow into leadership, BGS remains a relevant, recognized gauge of your value to the business community and a resource for meaningful connections.



MEMBERS-ONLY AFFILIATE OFFERS

BGS can help you make the transition from college to career easier with members-only offers on professional attire, technology, travel and more. (You'll find a list of current affiliates on page 16.)



Beta Gamma Sigma is founded.

BGS exclusively recognizes programs accredited by AACSB International.

The Society's constitution is changed to allow female members to be inducted.

The global headquarters of BGS is moved to St. Louis, where it remains today.

The first BGS International Honorees are named.

1913 1921

1932

1961

1963

WE ARE... TIME-TESTED & TIMELESS

WHY BGS MATTERED IN 1913

Before Beta Gamma Sigma, business programs were largely unsanctioned and there were few reliable markers to distinguish those business students who excelled in their studies. The founders of Beta Gamma changed that when they founded the first business honor society in 1913. The strict criteria for BGS membership came to serve as the foremost benchmark for quality business scholars and signified the highest honors possible within quality schools.

WHY BGS MATTERS NOW

More than a century after its inception, Beta Gamma Sigma provides its members lifelong value. From academic recognition to networking and career growth, BGS is with you every step of the way. Accept your invitation to get the journey started!

The Medallion for Entrepreneurship Award is instituted.

BGS installs its first collegiate chapter outside North America at The Chinese University of Hong Kong

Quiester Craig, then dean of North Carolina A&T State, becomes first African-American president of BGS

BGS inducts its 500,000th member at Concordia University in Montreal.

BGS celebrates "A Century of Excellence" and inducts its 750,000th member.

600th chapter established at Troy University.

BGS installs its first collegiate chapter outside the US. at the University of Calgary.

The first Student Leadership Forum is held.

Sara M. Freedman, then dean at Mississippi State, becomes the first female president of BGS.

The first Global Leadership Summit is held.

1986 1989 2000 2001 2003 2004 2013 2015 2019 2020



WE ARE...
**YOUR
NEXT STEP**

ACCEPTING YOUR INVITATION

Today is an important day: it is the day you take the first step that thousands of world-changers also chose to take. It is the day that you follow in the footsteps of the world's most influential CEOs and executives, while also blazing a new and unique trail of your own.

Consider the life-changing implications of this honor. Think about how joining this league of achievers will open doors for you that no other organization can. Then ask yourself: ***Are you BGS?***

SIX THINGS TO DO RIGHT NOW

1. Accept your member invitation. Your official invitation will be sent to you via email by BGS. The email will include information on the membership fee for your chapter. Use the link in that email to complete your profile and accept your invitation.

2. Get involved with your chapter for social events, recognition ceremonies, and BGS Gives Back. Talk to your chapter advisor about opportunities to get involved or take on a **leadership position**.

3. Connect with BGS on social media. Join us on [Facebook](#), [Instagram](#), [YouTube](#), [Twitter](#) and [LinkedIn](#) to stay engaged with the Society and what's happening with our members around the world. We'll share information about the latest news and events as well as thought leadership content to help you find your next job and support you throughout your career.

4. Check out ConnectBGS, Beta Gamma Sigma's exclusive forum-style networking platform. Connect with and get to know your fellow members from around the world. Share ideas, engage in discussions, and learn about all things business from the "*best in business*".

5. Tell everyone you know. Your membership is proof that BGS considers you a leader of the business world—share the news with your friends and family! Let everyone know that you're now part of the world's most prestigious business honor society.

6. Add it to your resume. Add the official BGS key to your resume, and talk to your future employers about how Beta Gamma Sigma membership is proof of your aptitude, perseverance, and talent. Consider adding this statement to your cover letter: "I am a lifetime member of Beta Gamma Sigma. BGS has chapters at only the top 5% of business programs, and only the top performing scholars from those programs are invited into membership."

WE ARE... YOUR TEAM

"I think here at the GLS, it's amazing. Students have come from nearly 200 schools and everyone truly is a leader. You can tell they really want to be the best. And that's shown through the corporate sponsors and the graduate business schools that are here as well."



Devon Neudorf
Adelphi University

BGS PROGRAMS AND EVENTS

At BGS, opportunities to grow, network and learn are endless.

Collegiate Chapters are home base for all things BGS. Chapter events and activities will provide face-time with other members at your school. Some elect student officers, giving members an opportunity to develop their leadership skills and influence the direction of the chapter.

The Alumni Network is a natural extension of collegiate chapters. Members of all experience levels and business disciplines use the network to build wide-reaching career connections and to stay plugged in to BGS throughout their careers.

The Global Leadership Summit provides a unique learning experience for collegiate members. The Summit helps students take their leadership skills to the next level with real-world insight and hands-on experiences. Students will have the opportunity to network with business students as well as academic, business, and non-profit thought leaders from across the globe. They will learn more about themselves and how to leverage their strengths.

The Ethical Leadership Certification Program helps collegiate members take deliberate steps to bring honor, wisdom and earnestness into the workplace. This program, which was created in partnership with The NASBA Center for the Public Trust, is a signal to future employers of your commitment to ethical leadership.

Career Central is a section of the website that's dedicated to helping you get started on your career path. Here you'll find expert interviews, professional development programs and webinars, original blog posts, job-hunting advice, and much more.

BGS Gives Back embodies the core principles of service and leadership year-round. BGS encourages chapters to organize community service events to help members grow as a team while they give back to the global community.

OFFICIAL
INVITATION
ACCEPTANCE
INFO ON
PAGE 9

WE ARE... SCHOLARS

"Being a member of BGS played a key role in my interview and acceptance into graduate school because I was able to highlight the leadership skills afforded to me during my tenure as an undergraduate student inside and outside of the classroom."



Jose Francisco
Southern University
and A&M College

TAKING EDUCATION TO THE NEXT LEVEL

Graduate schools know about Beta Gamma Sigma and recognize its members as highly accomplished candidates for advanced graduate degrees. Many schools are so confident in BGS members, they're willing to make an investment in your education. If you're ready to explore an MBA or Ph.D., start with the graduate scholarship opportunities available to BGS members from top business schools. Visit the [member benefits section](#) of our website for a list of schools and partners that offer benefits exclusively to BGS members.

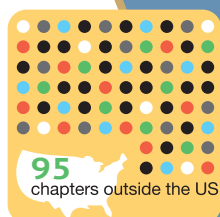
GRAD SCHOOL RESOURCES

Graduate School Scholarships Some of the best business school programs in the world offer scholarships and tuition assistance exclusively to BGS members.

Test Prep If grad school is in your plans, you'll likely take the GMAT or GRE. We partner with world leaders in test preparation to help BGS members prepare so they can score big.

GMAT/GRE and Fee Waivers BGS is a name so respected that many graduate schools will waive GMAT/GRE requirements during application. Others will waive application fees. BGS forms new partnerships all the time to make the process even easier for our members.

WE ARE... PROUD OF OUR MEMBERS



WHAT BGS MEANS TO MEMBERS

Beta Gamma Sigma boasts a lot of big numbers; 107 years, 190 countries, and 890,000 lifetime members. The breadth and scope of the organization can seem staggering, but our size doesn't tell the whole story. Each and every BGS member holds a unique place among us. Each matters to a parent, a professor, a spouse, a colleague. And each one matters to us. When you join Beta Gamma Sigma, you are more than just a number. You're an irreplaceable part of the BGS story.

NOTABLE MEMBERS

1-800-Flowers.com,
President

AT&T, President, CEO &
Chairman

Bank of America, Chief Risk
Officer

Bank of America, Co-COO

Bank of America's

Merrill Lynch division, President

Chase Bank, CEO

CitiGroup's Smith Barney Unit, CEO

Deloitte, Chairman

Deloitte, CEO

Deutsche Bank, Co-CEO

DuPont, CEO & Chairman

Ellevest Global Women's Index Fund,
CEO & Co-Founder

Ernst & Young, Global COO

Ernst & Young, Global Managing
Partner

Ernst & Young, Global Vice Chair-Tax

Federal Reserve, Chairman

General Electric, Vice Chairman

GE Asset Management, President & CEO

GE Capital, Chairman & CEO

Good360, Chairwoman

Hewlett-Packard, CEO & Chairman

Hewlett-Packard, EVP & CTO

International Executive Service
Corps, Co-Founder

National Presto Industries,
President & CEO

Nike, EVP & CFO

Nobel Prize, Economics (2016)

PayPal, EVP & COO

The Pew Charitable Trusts,
President & CEO

Pokémon Go, Founder

PricewaterhouseCoopers,
Assurance Leader

PricewaterhouseCoopers,
U.S. Chairman & Senior Partner

Procter & Gamble, CEO

UnitedHealth Group, President &
CEO

Under Armour, Senior Vice
President

U.S. Olympic Team, Medalist (2016)

Veterans Affairs, U.S. Secretary



Beta Gamma Sigma is continually adding value to your BGS membership by bringing you a host of affiliate partners. [Check the website for more info.](#)

Internships & Volunteer Opportunities

Absolute Internship
IBGA/TFAS
The Intern Group
The Osgood Center for International Studies
United Planet
The Washington Internship Institute

Insurance

GEICO Insurance

Tech

Dell
Lenovo

Gifts & Services

1-800-Flowers and
1-800-Baskets.com
Church Hill Classic Diploma Frames
Enterprise Car Sales
UPS

Professional Attire

K&G Fashion Superstore
Jos. A Bank
Men's Wearhouse
Moore's Clothing for Men

Travel

AVIS Rent-a-Car
Budget Car and Truck Discount
Enterprise Rent-a-Car
Hotel Engine
Last Minute Travel

*Please note you must be an inducted member of Beta Gamma Sigma to see specific member benefit information.