



**ASCLS**  
The American Society for  
Clinical Laboratory Science  
**MISSOURI**



# 2025 Annual Spring Meeting



# WELCOME FROM THE COMMITTEE

The Missouri State Chapter of the American Society for Clinical Laboratory Science welcomes you to the historic Memorial Union on the Mizzou Campus in Columbia, MO for the 2025 ASCLS-MO Spring Meeting. During the day on Monday and Tuesday, take the opportunity to learn from our expert speakers and spend time with exhibitors in Stotler Lounge, where you can network with our attendees, recruiters, and vendors.

Monday evening join us at The Heidelberg or “The Berg” as locals call it, for a fully catered, private Social Event. Hearty apps and finger foods will be served, and each registrant will receive two drink tickets with a cash bar available until we close the place down! The Berg is located a short walk away from Memorial Union and even closer to event parking.

The ASCLS-MO Tom Redding Memorial Scholarship fund will also host its annual silent auction. Wine, Spa Day, and Movie Night baskets are just a few of the items up for bid, so bid early and often! You will find the auction items at the registration table. Don't forget to check out our membership booth as we'd love to have you become an ASCLS-MO Member! The OTC MLT Program will also be back with their lab swag. Just in time to pick up handmade badge reels, jewelry, stickers, and more for Medical Laboratory Professionals Week gifts!

After sessions are over, take advantage of our central location to explore the Mizzou campus. Take a selfie with The Columns in the Francis Quadrangle, the most recognizable landmark of the University of Missouri. Check out Tiger Plaza or take a peek at the new MU Health Care Children's Hospital lobby, reimagined and built to create the best environment for kids and their families.

**We look forward to learning with you at the ZOU!**

## THANK YOU TO THE 2025 ASCLS-MO SPRING MEETING PLANNING COMMITTEE

**Alese Thompson - Committee Chair**

**April German**

**Audrey Schutte**

**Brenna Ildza**

**Candi Barker**

**Danyel Anderson**

**John Koenig**

**Renee Setina**

**Sarah Schremser**

**Steph and John Godfrey**



*We appreciate the individuals who volunteered their  
time & effort to make this program possible!*



# ACKNOWLEDGEMENTS



These organizations have provided additional sponsorship dollars toward our event. Without these contributions, we could not offer this comprehensive, quality program!



# GENERAL INFORMATION

## **ASCLS Member Discounted Rates**

Non-Members must join ASCLS prior to the meeting to receive discounted member rates to the meeting. Join online or print an application at: <https://ascls.org/membership/join>.

## **Onsite Registration**

The registration desk will be located in the hall outside Stotler Lounge

## **Registration Desk Hours**

Monday, March 31st, 8:00 am to 4:00 pm

Tuesday, April 1st, 8:00 am to 1:30 pm

## **Exhibit Hours**

Vendor Setup Hours: Monday, March 31st, 7:00am-8:00am, 10:45-11:30

Monday, March 31st, 11:00 am to 4:00pm

Tuesday, April 1st, 9:00 am to 1:00 pm

## **Badges**

Registration identification badges must be worn for admission to all educational sessions, meetings, workshops, vendor exhibits, and social functions. At the conclusion of the meeting, feel free to drop your badge holder off at the registration table. This allows us to recycle them and cut down on unnecessary waste.

## **Internet Access**

Complementary standard Wi-Fi is available throughout the MU Campus. Select the Mizzou Guest Wifi Network for access. The password is "TrumanTiger"

## **Continuing Education Credit**

ASCLS-MO is an approved provider of continuing education by the P.A.C.E.® program, which is accepted by the ASCP Board of Certification and all states. The ASCLS-MO Spring Meeting offers a wide range of educational opportunities to meet your continuing education needs. A total of up to 17 hours of P.A.C.E.® approved, quality programming will be offered.

**NOTE:** In an attempt to align with ASCLS National practices, meeting attendees will complete session evaluations online and self-prepare their P.A.C.E.® Certificate of Attendance by using the online ASCLS C.E. Organizer program. Further instructions will be given by session moderators during the meeting. You will receive a paper P.A.C.E.® Credit Organizer with your registration packet.



# GENERAL INFORMATION

## Lunch Sponsor Eurotrol

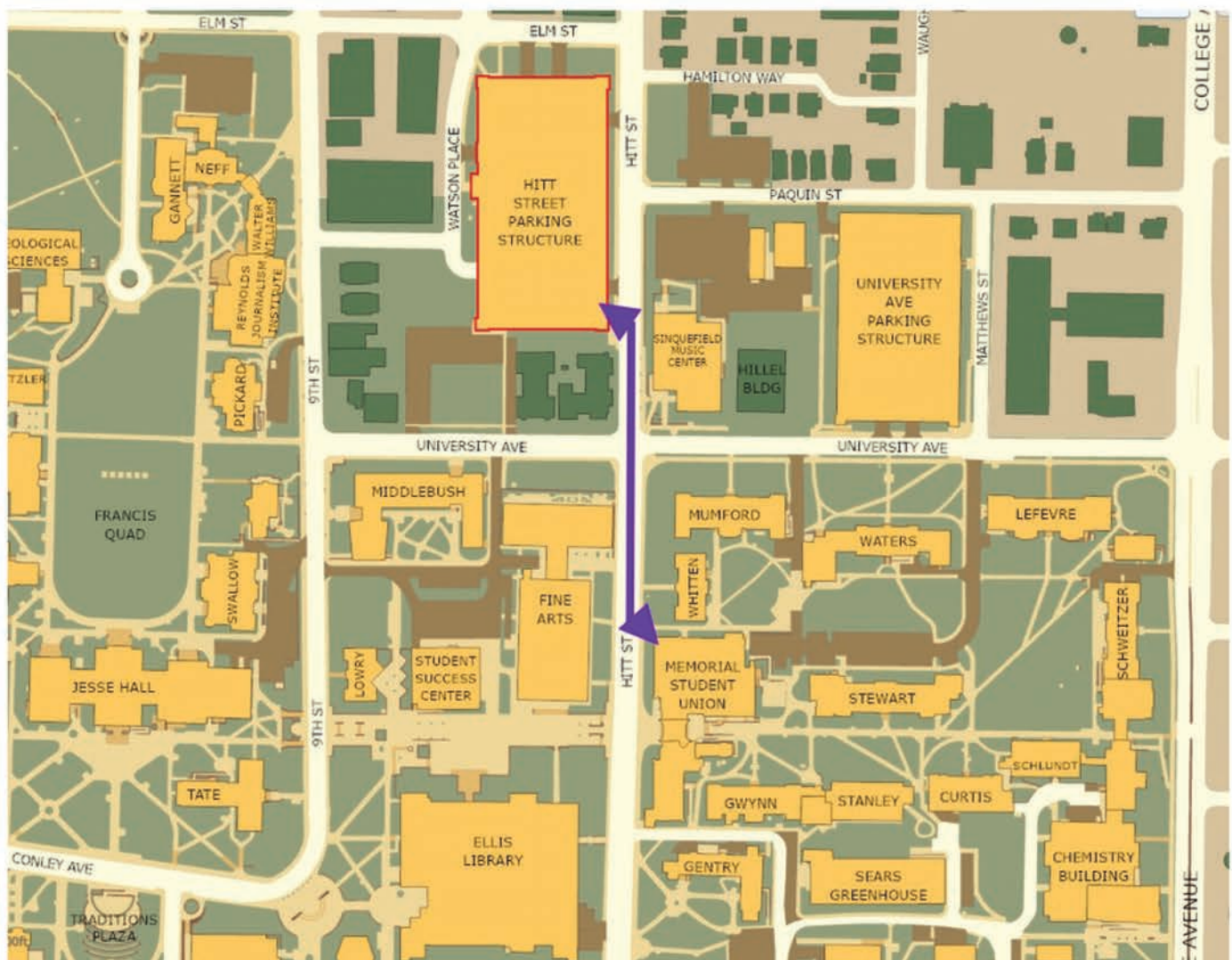
If you purchased a full registration, lunch will be provided in the Stotler Lounge on both days. Complimentary snacks and beverages will also be available in the Stotler Lounge throughout the day. If you need additional food or beverages, there are vending machines, a Starbucks, and small cafe conveniently located in the Memorial Union. Ask a Committee Member and they can give you directions.

### Parking

Please use the following address to park: **309 Hitt St, Columbia, MO 65201**

Follow all signage for visitor parking levels and spots.

Parking fees in the Hitt Street Parking Structure are covered for all registrants by ASCLS-MO. Please check your email used to register for the meeting on March 30th for instructions on how to register for parking. Please note, if you do not register before parking your car, you may be ticketed. ASCLS-MO is not responsible for parking tickets incurred by registrants.





# SPECIAL EVENTS

Sponsored by:  **BECKMAN  
COULTER**



## Monday, March 31st

**Opening Keynote Presentation 8:45 am - 10:15 am**

*Sten Westgard, MS, Westgard QC*

### **Are you running QC, or is it ruining you?**

Sten Westgard is Director of Client Services and Technology for Westgard QC. For more than 30 years, Sten has managed the Westgard website and training portal, creating and administering online training, as well as editing and writing hundreds of reports, essays, and applications on quality control, method validation, Six Sigma and other laboratory management topics. Sten is an adjunct instructor at the Mayo Clinic School of Health Sciences in Rochester, Minnesota; an adjunct faculty member at the University of Alexandria, Egypt; an adjunct visiting faculty member at Kastruba Medical College of Manipal University, Mangalore, India; and an honorary visiting professor at Jiao Tong University, Shanghai.

**Lunch with Exhibitors / ASCLS-MO Business Meeting and Awards 11:30 am - 1:00 pm**

Boxed lunch provided by Panera

**Social Event 5:00pm - 7:00 pm**

The Heidelberg, 410 S 9th St, Columbia, MO 65201

Private social event featuring hearty apps and finger foods.

Each registrant will receive two drink tickets with a cash bar available until we close the place down!

## Tuesday, April 1st

**Coffee with Exhibitors 8:30 am - 9:00 am**

Included in your registration; this is a great opportunity to visit with the vendors and network with your peers while enjoying the greatest beverage known to Medical Laboratory Scientists.

**Lunch with Exhibitors 11:15 pm -12:15 pm**

Boxed lunch provided by Panera

**Closing Keynote Presentation 2:00 pm - 3:30 pm**

*Jessica M. Colón-Franco, PhD, DABCC, FADLM*

### **Navigating the Imperfect Laboratory: Balancing Strategy, Operations, and Innovation**

Dr Jessica M Colón-Franco is Director of the Special Chemistry Laboratory and the Blood Gas Laboratory at Cleveland Clinic, and adjunct faculty at Cleveland State University in Cleveland, OH, and served as Section Head of Clinical Biochemistry for 6 years. In these roles, Jessica provides strategic, clinical and scientific direction to the clinical laboratories in the section. She completed fellowship training in Clinical Chemistry at Vanderbilt University Medical Center in Nashville, TN. Jessica is a diplomate of the American Board of Clinical Chemistry, fellow of the AACC Academy and is a member of several laboratory medicine associations, where she has served in various committee roles, among these, the Latin American Working Group of AACC's Global Quality Initiative. Jessica's interests are focused on acute care testing, endocrinology, therapeutic drug monitoring and toxicology, and inflammatory biomarkers.





# MORE INFORMATION



## Clinical Laboratory Science

University of Missouri

### Why Choose Mizzou?

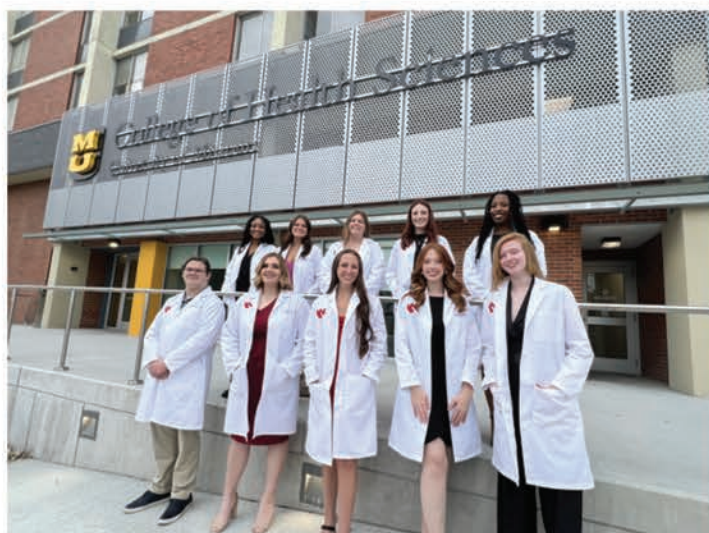
A degree from Mizzou carries weight beyond just a credential—it represents a commitment to excellence, innovation, and leadership in health care. As Missouri's flagship university and a member of the prestigious Association of American Universities (AAU), Mizzou is recognized for its rigorous academic standards, world-class faculty, and cutting-edge research. Our graduates benefit from strong industry connections, access to state-of-the-art facilities, and a reputation that opens doors in competitive job markets.

Employers recognize the Mizzou advantage—graduates who are well-trained, adaptable, and ready to make an immediate impact in health care.

In the field of Medical Laboratory Science, Mizzou's upcoming standalone undergraduate MLS program is uniquely positioned to provide an immersive, hands-on education that mirrors real-world clinical settings. With our hospital-grade analyzers, industry partnerships, and dedicated faculty, students gain unparalleled experience that prepares them not only to pass certification exams but to lead in the profession.

For professionals who are already ASCP-certified, pursuing your MHS in Clinical and Diagnostic Science with an emphasis in Clinical Laboratory Science degree just got a whole lot easier. Our online asynchronous master's degree means more than just career advancement—it signifies a deep understanding of interdisciplinary health care, leadership, and specialized expertise. Whether you're aiming for clinical management, academia, or industry roles, our program equips you with the knowledge and network to elevate your career.

At Mizzou, you're not just earning a degree; you're joining a legacy of excellence that sets you apart.



### The Tom Reddig Missouri Scholarship Fund

Are you aware there is a scholarship fund that can financially help you attend meetings such as this one, or similar laboratory science educational events, or even formal education? Well there is, and if you are a member of ASCLS-Missouri, you may be eligible to obtain money to continue your professional development!

For more information, check out our website: [asclsmo.org](http://asclsmo.org) or email Lucia Johnson at [luciajohnson123@gmail.com](mailto:luciajohnson123@gmail.com)

To raise funds for the scholarship fund, be sure to check out our raffle basket items next to the registration table. Remember that 100% of the proceeds will go towards student scholarships.

Tom loved life, chocolate, ASCLS-MO, the Missouri Scholarship Fund, and so much more. He is forever in the hearts of those who knew him.

**"Chemically speaking, chocolate really is the world's perfect food." Michael Levine**

**"There is nothing better than a friend, unless it is a friend with chocolate." Linda Grayson**

**"All you need is love. But a little chocolate now and then doesn't hurt." Charles M. Schulz**

At the conclusion of the meeting, feel free to drop your badge holder off at the registration table. This allows us to recycle them and cut down on unnecessary waste. Thank you!





# SPEAKER SCHEDULE

**MONDAY, MARCH 31st**

8:30-8:45 AM Stotler Lounge N103	<b>Welcome by President, John Koenig</b>
8:45-10:15 AM Stotler Lounge N103	<p><b>Opening Keynote: Sten Westgard, MS</b></p> <p><b>Are you running QC, or is it ruining you? An update on evolving Westgard Rules, new CLIA goals, and other frustrations</b></p> <p><b>Description:</b> The original Westgard Rules were published in 1981, back when QC was done with pen and graph paper. 44 years later, maybe it's time to upgrade your QC? New CLIA PT criteria - acceptance criteria reduced by up to 60% - may soon force labs to tighten up their QC. Rather than exacerbate the old habits of traditional QC, it's time to embrace a more modern approach: Westgard Sigma Rules. Incorporating Six Sigma into the QC process, there's a way to reduce false rejections while maintaining error detection. Don't get lost in the death spiral of repeating controls - leverage your instrument quality to streamlined QC. <b>(1.5 CE)</b></p> <p><b>Objectives:</b> 1. Identify what CLIA PT rules have been tightened significantly. 2. Calculate an analytical Sigma metric for a laboratory test. 3. Implement Westgard Sigma Rules to customize QC.</p> <p><b>Level of Instruction:</b> Intermediate - Refresher course; some basic knowledge required</p>
10:15-10:30 AM Stotler Lounge N103	<b>BREAK</b>
10:30-11:30 AM Room N214A	<p><b>Dr. Emily Coberly, MD</b></p> <p><b>Empower Group O: Do You Know Where Your Os Go?</b></p> <p><b>Description:</b> The US blood supply and hospital demand for O negative blood are changing over time. In this session we will discuss the impact of O negative overutilization and explore ways that hospitals can help to stabilize the O negative blood supply. <b>(1.0 CE)</b></p> <p><b>Objectives:</b> 1. Summarize national trends in supply and hospital utilization of O negative red blood cells. 2. Examine O negative overuse as a contributor to O negative shortages. 3. Review best practice guidance on use of Group O red blood cells. 4. Discuss strategies hospitals can employ to reduce overutilization of O negative red blood cells.</p> <p><b>Level of Instruction:</b> Intermediate - Refresher course; some basic knowledge required</p>
10:30-11:30 AM Room N214B	<p><b>Patty J. Eschliman, MHA, MLS(ASCP)cm, DLMcm, CPC</b></p> <p><b>Destination Leadership: It's All in the Journey and the Fun You Have Along the Way</b></p> <p><b>Description:</b> If you are new to leadership or struggling to find your strengths, this presentation is for you! Packed full of practical knowledge including how to build and earn the trust necessary for team engagement, develop emotional intelligence, cultivate effective communication, while also finding the joy and laughter to stay optimistic, Patty will make sure you walk away more confident and excited about your leadership journey. This presentation is a "must attend" for anyone interested in the skills needed to get noticed and advance in their career. <b>(1.0 CE)</b></p> <p><b>Objectives:</b> 1. Recognize current competency in leadership skills. 2. Describe the leadership skills that will get you noticed and advance your career. 3. Summarize the communication skills that will build trust and increase engagement with your team. 4. Walk away with a list of resources that ensure success on your leadership journey.</p> <p><b>Level of Instruction:</b> Basic - Entry level; no prior knowledge of subject necessary to attend this program</p>
11:30-1:00 PM Stotler Lounge N103	<p><b>LUNCH</b></p> <p><b>ASCLS-MO Business Meeting and Awards</b></p> <p><b>Visit with Exhibitors</b></p>
1:00-2:00 PM Room N214A	<p><b>Emily Wiley, BS</b></p> <p><b>Hemophilia A in Canines</b></p> <p><b>Description:</b> This is a personal story of adopting a dog from a rural shelter and the journey of discovering and treating them for Hemophilia A. We will cover diagnosing a dog with Hemophilia A, laboratory results between dogs and humans in crisis of a hemophilic bleeding event, and gene therapy that is available by clinical trial for hemophilic dogs. <b>(1.0 CE)</b></p> <p><b>Objectives:</b> 1. Describe the clinical signs and common presentations of Hemophilia A in canines. 2. Compare laboratory values for canine and human specimens in hemophilic crisis and recovery. 3. Explain the laboratory testing methodologies used to diagnose and monitor Hemophilia A in canines, including coagulation assays and factor activity testing. 4. Describe gene therapy treatment in Hemophilia A canine and human patients.</p> <p><b>Level of Instruction:</b> Basic - Entry level; no prior knowledge of subject necessary to attend this program</p>
1:00-2:00 PM Room N214B	<p><b>Nicolette A. Yevich, EdD</b></p> <p><b>Career Launch Success: Mastering Interviews, Professionalism, and Alumni Connections</b></p> <p><b>Description:</b> This session equips college students with essential skills for job interviews, pay negotiations, and maintaining professionalism in the workplace. Learn how to navigate salary discussions confidently, present yourself effectively, and stay connected with your alma mater for ongoing career support and networking opportunities to enhance your future success. <b>(1.0 CE)</b></p> <p><b>Objectives:</b> 1. Effectively present themselves during job interviews, showcasing their skills, experience, and professionalism to potential employers. 2. Understand aspects of negotiating salary and benefits during job interviews, advocating for fair compensation based on industry standards and personal value. 3. Maintaining professional relationships with their alma mater, leveraging alumni networks for ongoing career development and opportunities.</p> <p><b>Level of Instruction:</b> Basic - Entry level; no prior knowledge of subject necessary to attend this program</p>
2:00-2:15 PM Stotler Lounge N103	<b>BREAK- Visit with Exhibitors</b>



# SPEAKER SCHEDULE

## MONDAY MARCH 31st, CONTINUED

2:15-3:15 PM Room N214A	<p><b>Sarah Buckmiller, MS, MLS(ASCP)cm</b>  <b>Mentorship in the Laboratory: from Phlebotomy to Pathology</b>  <b>Description:</b> Define and review what a mentor is in general and also how the concept is important in laboratory science careers. Examples will be shared on how mentorship played a pivotal role in my own laboratory career development. (1.0 CE)  <b>Objectives:</b> 1. Explain what mentorship is.  2. Explain why a mentor may be important in a healthcare career, specifically in the laboratory.  3. Discuss the importance of having a mentor within healthcare and also a mentor with a different career background.  4. Participants will have the opportunity to consider what qualities they may be looking for in a mentor.  <b>Level of Instruction:</b> Basic - Entry level; no prior knowledge of subject necessary to attend this program</p>
2:15-3:15 PM Room N214B	<p><b>Jim Flanigan, CAE, Executive Vice President, American Society for Clinical Laboratory Science</b>  <b>Labvocacy 2025 and Beyond</b>  <b>Description:</b> Federal healthcare policy is in a state of critical disruption. Laboratory professionals have a choice to make, either be active and effective participants in the legislative and regulatory process or potentially end up as an afterthought as these significant changes occur. For maximum effectiveness, laboratory professionals need sharply defined understanding of the issues and the legislative and regulatory processes as well as clear-eyed perspectives on the consequences of inaction. This presentation will provide a briefing on current issues like laboratory reimbursement, regulation of laboratory developed tests, and the laboratory workforce. An inside look at how government really works will be discussed as well as what is required to be effective "labvocates." (1.0 CE)  <b>Objectives:</b> 1. Use the knowledge of issues and institutional structures to develop the most effective advocacy approach and plan for possible future states.  2. Discuss significant federal legislative and regulatory issues affecting clinical laboratories and medical laboratory professionals, including workforce, reimbursement and testing regulation.  3. Recognize how the dynamics of the current political environment and the approaching mid-term elections will influence those issues.  <b>Level of Instruction:</b> Basic - Entry level; no prior knowledge of subject necessary to attend this program</p>
3:15-3:30 PM Stotler Lounge N103	<b>BREAK- Visit with Exhibitors</b>
3:30-4:30 PM Room N214A	<p><b>Marnie Imhoff, MA, MBA, MLS(ASCP)cm and Ashley Eichelberg MHPTT, MLS(ASCP)CM</b>  <b>Impact of Stress on Medical Laboratory Science Students</b>  <b>Description:</b> Medical laboratory science (MLS) students experience stress from academic, personal, and economic factors. Research shows this stress can lead to poor academic outcomes, health concerns, and burnout. This presentation will examine study findings on MLS students' stress levels and types and their impact on academic performance. (1.0 CE)  <b>Objectives:</b> 1. Recognize the primary sources of stress indicated by MLS students.  2. Explain the effects of stress on the academic performance of MLS students.  3. Describe the significant findings for each stressor domain.  <b>Level of Instruction:</b> Basic - Entry level; no prior knowledge of subject necessary to attend this program</p>
3:30-4:30 PM Room N214B	<p><b>Minh Kosfeld, PhD, MLT(ASCP)cm</b>  <b>Associate Professor/ Medical Sciences Program Director</b>  <b>Glomerular Filtration Rate (GFR): Clinical Significance, Evolution of Assessment Methods, and Current Recommendations</b>  <b>Description:</b> This presentation examines Glomerular Filtration Rate (GFR) as a key marker in diagnosing and staging chronic kidney disease. It explores advancements in estimation formulas for improved accuracy and reviews current recommendations for its application in clinical practice. (1.0 CE)  <b>Objectives:</b> 1. Explain the physiological basis and clinical importance of GFR in assessing kidney function.  2. Compare methods for measuring and estimating GFR, including their limitations.  3. Discuss current recommendations for GFR assessment in various clinical settings.  <b>Level of Instruction:</b> Intermediate - Refresher course; some basic knowledge required</p>
5:00-7:00 PM The Heidelberg	<p><b>Private Social Event at The Heidelberg</b>  <b>410 S 9th St, Columbia, MO 65201</b></p>

## TUESDAY, APRIL 1st

9:00-10:00 AM Room N214A	<p><b>Lea Brandt, PhD, MA, OTD</b>  <b>Promoting Ethical Response in Practice: How to Navigate Moral Injury, Ethical Fading, and Ambiguity in Contemporary Healthcare</b>  <b>Description:</b> Participants will engage in discussion regarding contemporary ethical issues prevalent in clinical laboratory practice. Specifically, the session will focus on the difference between awareness of the profession's code of ethics and maximizing ethical action in practice. Tools will be provided that will assist attendees in navigating ethical conflict in practice brought about by an overemphasis on metrics that don't always equate to improved quality of care. (1.0 CE)  <b>Objectives:</b> 1. Differentiate between ethics and compliance in practice.  2. Describe the intersection between ethical action, communication, and professional autonomy.  3. Apply organizational ethics tools and strategies to mitigate ethical conflict in practice.  <b>Level of Instruction:</b> Basic - Entry level, no prior knowledge of subject necessary to attend this program</p>
-----------------------------	--



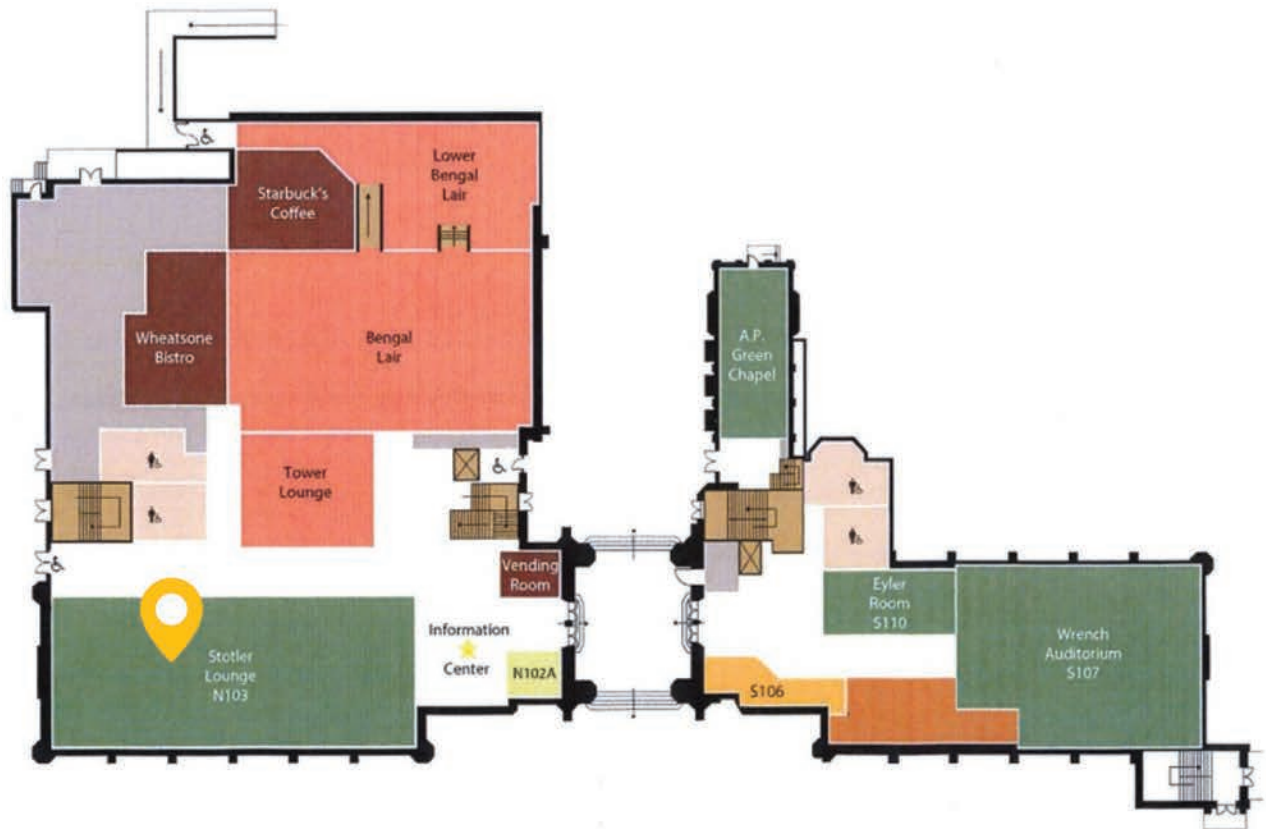
# SPEAKER SCHEDULE

## TUESDAY, APRIL 1st, CONTINUED

9:00-10:00 AM Room N214B	<p><b>Mark Borgman, PhD, DABCC</b>  <b>Cardiac Biomarkers in Heart Failure: BNP and NT-proBNP</b>  <b>Description:</b> Heart failure is a serious condition that affects about 6.5 million people in the United States. The natriuretic peptides, BNP and NT-proBNP, are important tools available to physicians with this important diagnosis of heart failure. This session reviews the pathophysiology of heart failure and the clinical utility of natriuretic peptide testing. <b>(1.0 CE)</b>  <b>Objectives:</b> 1. Classify the pathophysiology and classification of heart failure.  2. Associate the similarities, differences, and role of BNP and NT-pro BNP testing in heart failure.  3. Relate the impact of ARNI therapy on BNP and NT-pro BNP measurement.  <b>Level of Instruction:</b> Intermediate - Refresher course; some basic knowledge required</p>
10:00-10:15 AM Stotler Lounge N103	<b>BREAK- Visit with Exhibitors</b>
10:15-11:15 AM Room N214A	<p><b>Amanda Ramsey, MHA, M(ASCP)</b>  <b>Laboratory Safety: Mastering the Basics and Beyond</b>  <b>Description:</b> This session will cover Laboratory Safety 101 standards and take a deeper dive into special safety considerations that need to be taken when, implementing new equipment, laboratory construction, facility upgrades/downtimes and much more. <b>(1.0 CE)</b>  <b>Objectives:</b> 1. Describe basic Laboratory 101 fundamentals.  2. Evaluate situations and circumstances to predict safety concerns and mitigate risks.  3. Identify safety hazards, create risk assessments, and address the hazard.  4. Be armed with knowledge to ensure the safety of the laboratory and hospital staff.  <b>Level of Instruction:</b> Basic - Entry level; no prior knowledge of subject necessary to attend this program</p>
10:15-11:15 AM Room N214B	<p><b>Chris Overstreet, MT (AMT); Cody Buxton, MHA, MLS(ASCP)cm</b>  <b>Preanalytics Quality Management</b>  <b>Description:</b> Quality management often takes place as a normal practice within the Laboratory setting. This can sometimes exclude the preanalytic portion of orders and patient management and phlebotomist performance. MU Health has implemented metrics to monitor these for continuous improvement. <b>(1.0 CE)</b>  <b>Objectives:</b> 1. Identify quality metric opportunities prior to testing.  2. Identify orders management improvement opportunities.  3. Identify phlebotomy improvement opportunities.  <b>Level of Instruction:</b> Basic - Entry level; no prior knowledge of subject necessary to attend this program</p>
11:15-12:45PM Stotler Lounge N103	<b>LUNCH</b> <b>Visit with Exhibitors</b>
12:45-1:45 PM Room N214A	<p><b>Paul Riley, PhD, MBA, Diagnostica Stago, Inc.</b>  <b>Lupus Anticoagulant Testing Made Simple</b>  <b>Description:</b> Lupus anticoagulants (LA) are one of the tests typically positive in patients with antiphospholipid syndrome (aPS), a rare, autoimmune related disorder resulting in lifelong increased risk of venous and arterial thrombosis. LA testing panels consist of several different automated assays, including a LA sensitive activated partial thromboplastin time (aPTT), dilute Russell's viper venom time (dRVVT), along with thrombin time to rule out potential anticoagulant contamination. Although the testing panel appears complex, our educational program will break down the different assays recommended by current clinical guidelines, providing a clearer view for clinical laboratory practitioners. <b>(1.0 CE)</b>  <b>Objectives:</b> 1. Describe the symptoms and etiology of antiphospholipid syndrome (aPS).  2. Identify the role of the lupus anticoagulant (LA) relative to pathological thrombosis in clinical situations  3. Present current guidelines for diagnosis of LA in the context of aPS.  <b>Level of Instruction:</b> Intermediate - Refresher course; some basic knowledge required</p>
12:45-1:45 PM Room N214B	<p><b>Harold M. Burgeson, Jr., MPH, MT(ASCP)</b>  <b>Intersection of Microbiology and Infection Prevention</b>  <b>Description:</b> An introduction to NHSN definitions of Catheter Associated Urinary Tract Infections (CAUTI), Central Line Associated Blood Stream Infections (CLABSI), Surgical Site Infections (SSI) and Ventilator Associated Events (VAE) and the relation to microbiology practice and reporting. <b>(1.0 CE)</b>  <b>Objectives:</b> 1. Explain the basic NHSN definition of, and the contribution of microbiology practice and reporting to evaluation of a CAUTI event.  2. Explain the basic NHSN definition of, and the contribution of microbiology practice and reporting to evaluation of a CLABSI event.  3. Explain the basic NHSN definition of, and the contribution of microbiology practice and reporting to evaluation of an SSI event.  4. Explain the basic NHSN definition of, and the contribution of microbiology practice and reporting to evaluation of a VAE event.  <b>Level of Instruction:</b> Intermediate - Refresher course; some basic knowledge required</p>
1:45-2:00 PM Stotler Lounge N103	<b>BREAK</b>
2:00-3:30 PM Stotler Lounge N103	<p><b>Closing Keynote: Jessica Colon-Franco, PhD, DABCC, FADLM</b>  <b>Navigating the Imperfect Laboratory: Balancing Strategy, Operations, and Innovation</b>  <b>Description:</b> This session examines key factors in evaluating and prioritizing test offerings in a hospital laboratory, such as clinical utility, cost, and feasibility. Participants will learn a structured decision-making approach that balances patient care, efficiency, and financial sustainability, with insights from case studies on test selection, innovation strategies, and test development management. <b>(1.5 CE)</b>  <b>Objectives:</b> 1. List key factors for determining between in-house testing and outsourcing.  2. Implement structured decision-making approaches.  3. Develop strategies for sustaining innovation in hospital laboratories  <b>Level of Instruction:</b> Basic - Entry level; no prior knowledge of subject necessary to attend this program</p>



# Building Maps



## FIRST FLOOR



## SECOND LEVEL



