



American Sociological Association

ASA Connect

Connected Community App

Quick Start Guide

Contents

Install the Connected Community App (iPhone) 2

Install the Connected Community App (Android) 6

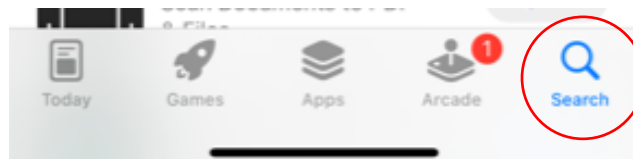
Install the Connected Community App (iPhone)

Step 1: Go to the App Store (iPhone)

To open your iPhone's App Store, look for the icon below on your iPhone's homepages:

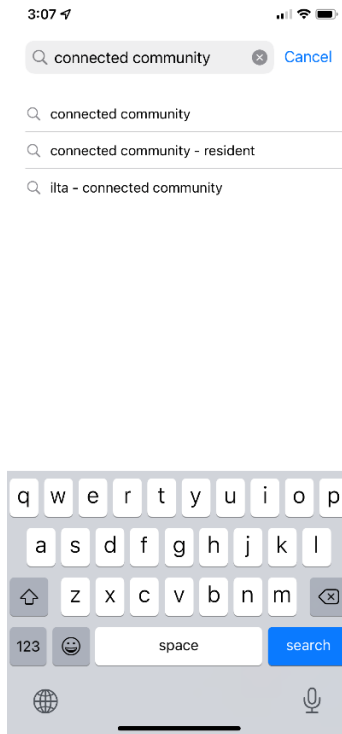


Once you access the App Store, tap the Search icon at the bottom right corner of your screen.

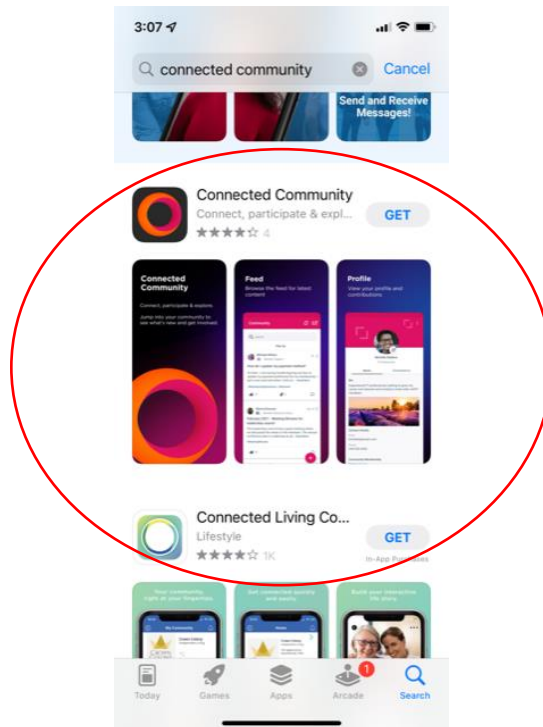


Step 2: Search for the Connected Community app and Download (iPhone)

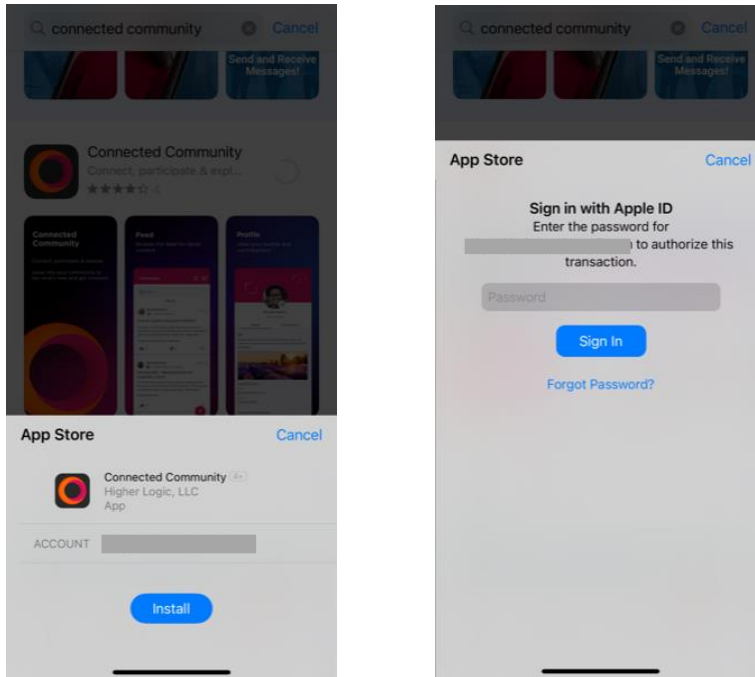
Type “Connected Community” into the App Store’s Search Bar and then tap “search” on your keyboard.



In the search results, tap the “GET” button by the app circled below.

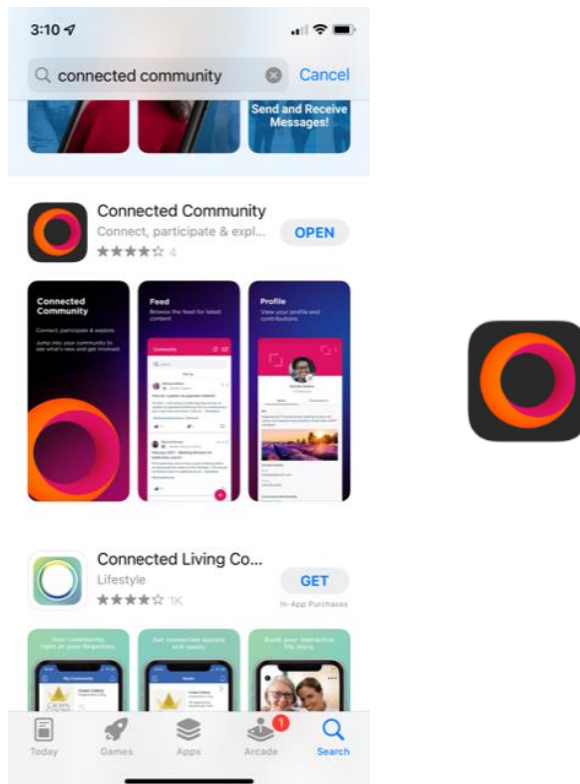


Tap the “Install” button, enter your Apple password, and tap “Sign In.”



Step 3: Open the Connected Community app and connect your account (iPhone)

Open the app by tapping “OPEN” in the App Store or by finding the Connected Community app icon on your homepages.



On the welcome screen, enter **connect.asanet.org** as the Domain and tap Next.

Step 1 of 2

Welcome

In order to sign in please provide your organization's community domain.

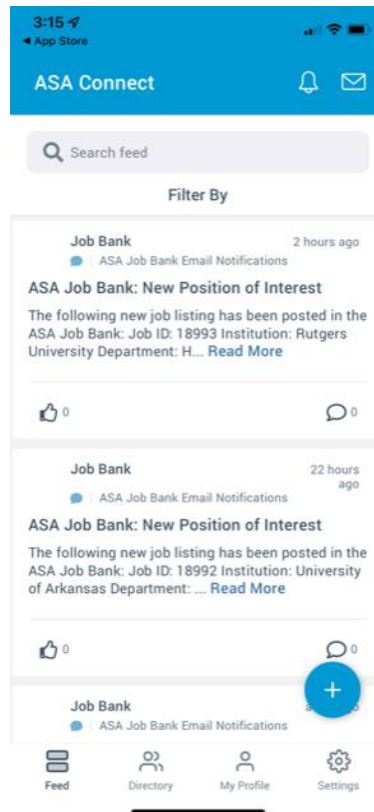
Domain
connect.asanet.org

Next

The my.asanet.org login page will appear on your screen. Enter in your ASA username and password like you would to access ASA Connect from your desktop. Then click Login.



After you log in, you will be brought to the Discussion Feed, where the most recent discussion threads are displayed.



Install the Connected Community App (Android)

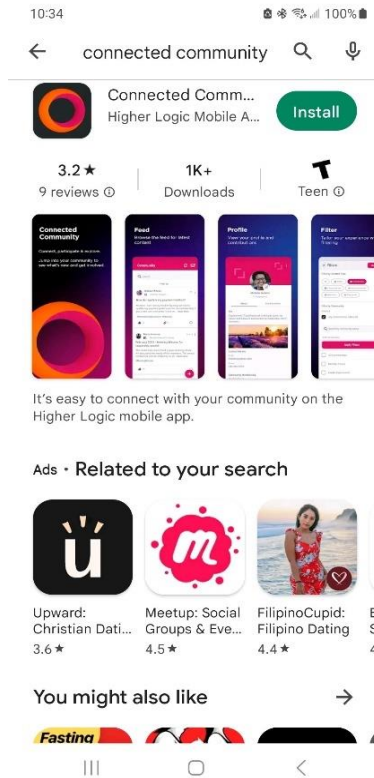
Step 1: Go to the Google Play Store

To open your Android phone's Google Play Store, look for the icon below on your phone's homepages:

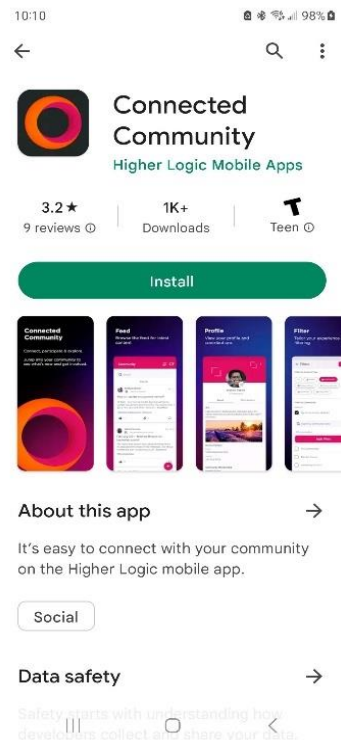


Step 2: Search for the Connect Community app and Download

Once you access the Google Play Store, type Connected Community into the Search bar.



Once you arrive at the app's page, tap "INSTALL" to download it.

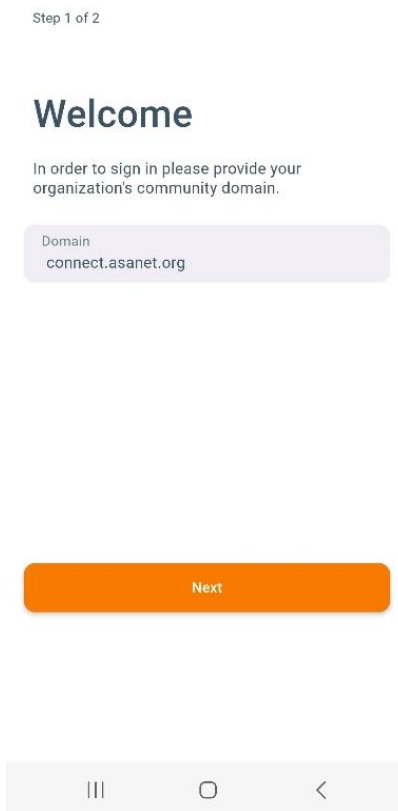


Step 3: Open the Connected Community app and connect your account

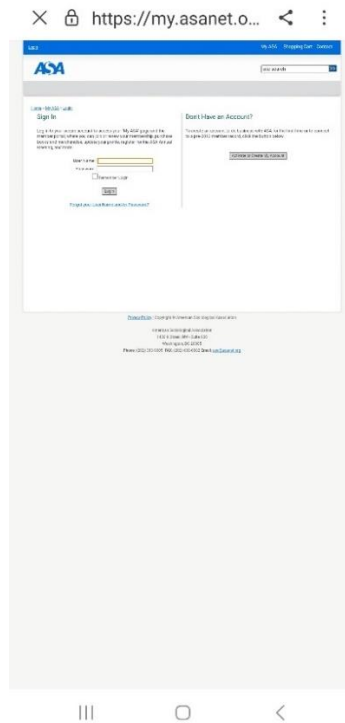
After installing, tap “OPEN” or find the Connected Community app on your homepages to open. The Connected Community icon is below.



On the welcome screen, enter **connect.asanet.org** as the Domain and tap Next.



The my.asanet.org login page will appear on your screen. Enter in your ASA username and password like you would to access ASA Connect from your desktop. Then click Login.



After you log in, you will be brought to the Discussion Feed, where the most recent discussion threads are displayed.

