

# IM Division Business Meeting

## 2018

### Chicago, IL



# EC Members for 2017-2018



**Jaeyong Song**  
PDW  
Chair



**Anu Phene**  
Program  
Chair



**Elizabeth Rose**  
Division  
Chair-Elect



**Aya Chacar**  
Division  
Chair



**Jay Anand**  
Immediate Past  
Division Chair

- The Last Years
- Financial Report
- Opportunity for Contributing
- Recognition and thanks  
Membership Feedback
- 2018 PDW - Jaeyong
- 2018 Program and Awards - Anu
- 2019 Program and EC Team - Beth
- Gala Time!!

## Successes and Work in Progress:

- Committees Reinvigoration and Rethinking
- EC Diversity
- Knowledge Base
- Division Website (<https://im.aom.org/>)
- Financial Shoring and Rebalancing
- Better Governance
- Final Contribution: Division Bylaws

## More Work Left to Do:

- Stemming the Tide
- Outreach

## Malika Richards IM Division Treasurer





# IM Division is Financially Sound

- Solid membership, but has declined slightly over the last few years
  - 2,406 members as of July 2018; allocation of \$30,966 available January, 2019. In 2018 base allocation increased to \$4,500 (from \$500)
  - 2,537/\$32,407 in 2017; 2,635/\$29,485 in 2016; 2,663/\$29,793 in 2015
- Significant contributions
  - 2018 - \$ 29,500 pledged  
Strategy&, Amorepacific, China Europe International Business School (CEIBS), Florida International Univ., George Washington Univ. CIBER, Hong Kong Univ. of Science and Technology (HKUST), Northeastern Univ., Univ. of South Carolina
  - 2017 - \$ 27,985 received from sponsors  
Strategy&, Florida International Univ., Northeastern Univ., China Europe International Business School (CEIBS), George Washington Univ. CIBER, Hong Kong Univ. of Science and Technology (HKUST), National Univ. of Singapore, Univ. of South Carolina, Univ. of Victoria; Willamette Univ.

	2017	2018
Balance Forward	-\$1,003	\$1,087
Division Allocation	\$29,485	\$32,407
Other Revenue Received	\$27,985	\$15,485 <i>(as of July1, 2018)</i>
Total Expenses	\$55,379	<i>n.a.</i>
Operating Funds 01/01	\$28,482	\$33,494
Operating Funds 12/31	\$1,087	<i>n.a.</i>
Endowment 01/01	\$64,366	\$65,654

- Join the division
- Encourage your friends to join
- Go to our gala and other events and encourage attendees to join- tell them why it is a great division
- Submit
  - Symposia
  - PDWs
  - Papers
- Tell your friends to do the same



- Sponsorships:
  - Awards
  - Gala/Big Events
  - Consortia –Junior Faculty, Doctoral
- Boston Off-Site
- Membership on Committees
  - Existing
  - Future (Bylaws committee ..)
- Future EC

Thanks to:



PDW Chair  
**Jaeyong Song**



Program Chair  
**Anu Phene**

# IM Division Committee Chairs



**Bill  
Newburry  
Dissertation**



**Grazia  
Santangelo  
Research**



**Mary  
Teagarden  
Teaching**



**Sam Park  
PWC Strategy &  
Eminent Scholar**



**Alvaro Cuervo-  
Cazurra  
Professional  
Achievement**



**Denise  
Dunlap  
Social**



**Tanvi Kothari  
Membership  
Drive**



**Alan Bird  
Outreach**



**Yue Wang  
Doctoral  
Student**



**Chei Hwee  
Chua  
Communications**



**Ali Taleb  
Online  
Teaching**



**Sali Li  
Online  
Research**



**William Newburry (Chair)**, Florida  
International University



**Catie Magelssen**, London Business School



**Bo Nielsen**, University of Sydney



**Anju Seth**, Virginia Tech University

**Mary Sully De Luque**, Thunderbird







**Grazia Santangelo (Chair)**, University of Catania



**Ilya Cuypers**, Singapore Management University



**Hendrik Dellestrand**, Uppsala University



**Jesper Edman**, Hitotsubashi University



**Carolina Gomez**, Florida International University



**Ilir Haxhi**, Amsterdam Business School



**Gary Knight**, Willamette University



**Nandini Lahiri**, American University



**Mila Lazarova**, Simon Fraser University



**Randi Lunnan**, BI Norwegian Business School



**Markus Pudelko**, University of Tübingen



**Riki Takeuchi**, HKUST



**Catherine Welch**, University of Sydney





**Mary Teagarden (Chair),** Thunderbird



**Gerhard Apfelthaler,** California Lutheran University



**Stéphane J.G. Girod,** IMD



**Jacobo Ramirez,** Copenhagen Business School



**Andreas Schotter,** Western University



**Denise Dunlap (Chair),** KGI – The Claremont Colleges



**Ilya Cuypers,** Singapore Management University



**José-Mauricio G. Geleilate,** University of Massachusetts Lowell



**Tanvi Kothari (Chair)**, San Jose State University



**Norihito Furuya**, University of Missouri, St. Louis



**Luiz Ricardo Kabbach de Castro**,  
Universidade de São Paulo



**Yih-teen Lee**, IESE, University of Navarra



**Ilro Lee**, University of New South Wales



**Hyun-Jung Lee**, London School of Economics

[mdc.imdivision.aom@gmail.com](mailto:mdc.imdivision.aom@gmail.com)



**Alan Bird (Chair)**, Northeastern University



**Cordula Barzantny**, Toulouse Business School



**Christina Butler**, Kingston Business School



**Norihito Furuya**, University of Missouri, St Louis



**Per Geisler Hansen**, Network of Corporate Academies



**Lily Ming Li**, University of Hull



**Martha Maznevski**, Ivey Business School





**Yue Zhao (Chair),** Florida International University



**A.J Corner,** University of Ottawa



**Ebru Ipek,** Simon Fraser University



**Mohan Song,** Florida International University





**Chei Hwee Chua (Chair),** University of Miami



**Liena Kano, (Facebook Group Administrator/Manager),**  
University of Calgary



**Everlyne Misati (Communications Officer),**  
Florida International University



**Charles Wankel (IMD-L List Director),** St. John's University.



**Rimi Zakaria (Photography Manager),**  
U. Wisconsin Whitewater



**Dennys Eduardo Rossetto (Website Manager),**  
U. Texas at El Paso / University Center of FEI



## Ways to Stay in Touch with the IM Division:

- Facebook
- LinkedIn (for doctoral students)
- IM Division Webpage
- IM Division Newsletter
- IMD-L Listserv



**Ali Taleb (Chair, Teaching),** MacEwan University



**Sali Li (Chair, Research),** University of South  
Carolina



# Sponsors



[mur12@psu.edu](mailto:mur12@psu.edu)

Malika Richards

Detailed report posted at IM Division Website

- Approval of the 2017 Meeting Minutes
- How can we serve you better?
- Gala vs. more intimate member only event vs. scholarships..?
- Charge for gala or free?
- Stemming the tide?
- Conference Tracks?



# 2018 PDW Program



PDW Program Chair  
**Jaeyong Song**

- 18 IM-sponsored PDWs and 22 Joint PDWs
  - Research (25), Teaching (11), Practice (4)
  - 2 Consortia + Meet the Editor Session (3)
  - Paper Development Workshop (1)
  
- Friday Boat Tour
  
- Saturday Breakfast for Doctoral and Junior Faculty Consortia at Loyola University

- YOU – the submitters... THANK YOU!



- Special thanks to the local host – Quinlan School of Business, Loyola University
- Doctoral Consortium: Exequiel Hernandez (Wharton)
- Junior Faculty Consortium: Wilbur Chung (Maryland)
- Paper Development Workshop: Nandini Lahiri (American University)
- Meet the Editors Session: Mona Makhija (Ohio State University)

# 2018 Program and Awards



Program Chair  
**Anu Phene**

- Submitted:
  - 418 papers (vs. 427 last year)
  - 29 symposia (vs. 28 last year)
- 497 reviewers, from 52 countries
  - 2.88 average assignments per reviewer
  - 3.29 average reviews per submission
- Accepted:
  - 186 Divisional papers in 44 sessions
  - 18 Discussion papers in 5 sessions
  - 18 Symposia
    - 11 IM-lead
    - 3 Showcase
    - 14/3/1 sponsored with 2/1/0 other divisions



## Discussion of cutting-edge research topics



**Ruth Aguilera**

Northeastern University



**Sri Zaheer**

University of Minnesota



**Anthea Zhang**

Rice University



How do local firms respond to foreign direct investment through international R&D?

**Jun Xia**, U. of Texas at Dallas

**Qian Gu**, Georgia State U,

**Marshall-Shibing Jiang**, Brock U

**Zhouyu Lin**, Jinan U



Building Entrepreneurial Orientation from Learning through Internationalization

**Anish Purkayastha**, U. of Sydney Business School

**Vishal K. Gupta**, U. of Alabama

**Vikas Kumar**, U. Of Sydney





Market Familiarity and Export Survival: When  
Experience Makes Exporting More Dynamic  
**Eliane Choquette**, Aarhus U.



Leveraging New Knowledge: The Learning-By-  
Exporting Effect on Leading and Lagging Family  
Firms



**Joan Freixanet**, St. Petersburg State U  
**Joaquin Monreal**, U. of Murcia  
**Gregorio Sanchez-Marin**, U. of Murcia



Creative Destruction Within and Across Countries:  
Do Culture and Connectedness Matter?

**Ikenna Stanley-Paschal Uzuegbunam**, Ohio U  
**J Michael Geringer**, Ohio U.  
**Christian Oberst**, Wells Fargo Securities, LLC

And the winner  
is...



**Joan Freixanet**, St. Petersburg State U

**Joaquin Monreal**, U. of Murcia

**Gregorio Sanchez-Marin**, U. of Murcia



Leveraging New Knowledge: The Learning-  
By-Exporting Effect on Leading and Lagging  
Family Firms





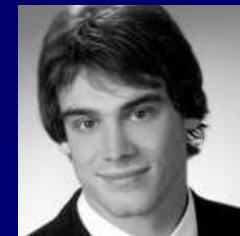


## Intercultural communication challenges in East-East encounters

**Hyun-Jung Lee**, London School of Economics

**Katsuhiko Yoshikawa**, Shanghai Jiao Tong U.

**Carol Wasbauer Reade**, San Jose State U.



## Do Chinese Subordinates Trust Their German Supervisors? Developing a Trust Development Model

**Joerg Bueechl**, University of Tübingen

**Markus Pudelko**, University of Tübingen





The diplomatic spouse: relationships between adjustment, social support and satisfaction with life

**Svala Gudmundsdottir**, U. of Iceland

**Thorhallur Gudlaugsson**, U. of Iceland

**Gylfi Dalmann Adalsteinsson**, U. of Iceland



Examining the Role of Institutions in Strategic Leadership Structures using Configurational Analysis

**Rene Olie**, Erasmus U. Rotterdam

**Rekha Rao-Nicholson**, Newcastle U. London

## High-Performance Work Systems and Organizational Performance: The Role of Societal Culture

**Ali Dastmalchian**, Simon Fraser U., **Nick Bacon**, City U. London, **Nicola McNeil**, La Trobe U., **Claudia Steinke**, U. of Lethbridge, **Paul Blyton**, Cardiff U., **Medha Satish Kumar**, Simon Fraser U., **Secil Bayraktar**, Ozyegin U.; **Werner Auer-Rizzi**, Johannes Kepler U. Linz, **Ali Ahmad**, Tongji U., **Richard Cotton**, U. of Victoria, **Tim Craig**, BlueSky Academic Services, **Che Ruhana Binti Isa Ghazali Bin Musa**, U. of Malaya; **Mohammad Habibi**, Industrial Management Institute, **Heh Jason Huang**, National Sun Yat-Sen U, **Pinar Imer**, Kadir Has U, **Ismail Ayman**, **Hayat Kabasakal**, Bogazici U, **Carlotta Meo Colombo**, U. of Pavis, **Sedigeh Moghavami**, U. of Malaya, **Tuheena Mukherjee**, Indian Institute of Technology, Kharagpur, **Ningyu Tang**, Shanghai Jiao Tong U, **Thi Nam Thang**, CFVG, **Renin Varnali**, Bahcesehir U.



And the winner  
is...



**Rene Olie**, Erasmus U. Rotterdam  
**Rekha Rao-Nicholson**, Newcastle U.  
London



Examining the Role of Institutions in Strategic  
Leadership Structures using Configurational  
Analysis



## Institutional Environment and the Mixed Gamble of Internationalization

**Elitsa R. Banalieva**, Northeastern U.

**Kimberly A. Eddleston**, Northeastern U.

**Ruihua Joy Jiang**, Oakland U.

**Michael D. Santoro**, Lehigh U.



## How dynamic capabilities enhance multinationality-performance relationship of emerging market firms?

**Amit Karna**, Indian Institute of Management, Ahmedabad

**Anish Purkayastha**, U. of Sydney Business School

**Sunil Sharma**, Indian Institute of Management, Ahmedabad

**Dhiman Bhadra**, Indian Institute of Management, Ahmedabad







Active Pursuit or Passive Escape? Revisit the Linkage between IFDI and OFDI in Emerging Markets

**Renfei Gao**, U. of Melbourne



Intermediate State Capabilities and Informal Entrepreneurship: A Configurational Perspective

**Andrew Spicer**, U. of South Carolina



**Joshua Ault**, Thunderbird Sch. of Global Management at ASU



Stigma Avoidance and the Delay of Foreign Exits of Emerging Economy Multinational Enterprises

**Kiattichai Kalasin**, National Institute of Development Administration



**Klaus Meyer**, Ivey Business School



And the winner  
is...



**Amit Karna**, Indian Institute of Management, Ahmedabad

**Anish Purkayastha**, U. of Sydney Business School

**Sunil Sharma**, Indian Institute of Management,  
Ahmedabad



**Dhiman Bhadra**, Indian Institute of Management,  
Ahmedabad

How dynamic capabilities enhance  
multinationality-performance relationship of  
emerging market firms?





Part of the problem or part of the solution?  
MNEs, FDI, and the cycle of corruption in  
Africa

**Aloysius Marcus Newenham-Kahindi**, U. of  
Saskatchewan

**Charles Edward Stevens**, Lehigh U.



Foreign MNEs and a proactive social strategy in  
a local firm: The mediating effect of attention

**Yoo Jung Ha**, U. of York



## International Diversification and Corporate Social Performance: The Subsidiary Activities Impact

**Peter Williamson**, Cambridge Judge Business School

**Pavlos Symeou**, Cyprus U. of Technology

**Stelios C. Zyglidopoulos**, U. of Glasgow Adam Smith Business School



## Does Human Rights Protection Matter for Emerging Market Multinationals' Ownership Strategy?

**Rekha Rao-Nicholson**, Newcastle U. London

**Liudmyla Svystunova**, Loughborough U

And the winner  
is...



**Aloysius Marcus Newenham-  
Kahindi, U. of Saskatchewan**  
**Charles Edward Stevens, Lehigh U.**



Part of the problem or part of the solution?  
MNEs, FDI, and the cycle of corruption in  
Africa



## Bringing Nationalism into Management Research: Governance Choices in Cross-Border Collaborations

**Gokhan Ertug**, Singapore Management U.

**Ilya Cuypers**, Singapore Management U.

**Douglas Dow**, Melbourne Business School

## Resource Curse Effects on Emerging/Developed Economy MNE Competitiveness and Co-Evolution

**Charles Funk**, Northeastern Illinois U.

**Len Trevino**, Florida Atlantic U.

**Juliet Oriaifo**, Florida Atlantic U.





## Interdependence between Corporate Governance and International Diversification: A Meta-Analysis

**Ettore Spadafora**, Rochester Institute of Technology

**Tatiana Kostova**, U. of South Carolina

**Marc Van Essen**, U. of South Carolina



## I Did It My Way: An International Analysis of Deviation from Corporate Governance Norms

**Michael A. Witt**, INSEAD

**Stav Fainshmidt**, Florida International U.

And the winner  
is...



**Gokhan Ertug**, Singapore Management U.  
**Ilya Cuypers**, Singapore Management U.  
**Douglas Dow**, Melbourne Business School



Bringing Nationalism into Management  
Research: Governance Choices in Cross-  
Border Collaborations





## Domestic Acquisitions, Institutional Heterogeneity and the Internationalization of Chinese Firms

**Yulia Muratova**, Aarhus U.



## Revisiting the monitoring role of sovereign wealth funds: Evidence from a quasi-experimental setting

**Nico Lehmann**, U. of Goettingen



**Almasa Sarabi**, U. of Erlangen-Nuremberg



## Electoral Outcomes and Managerial Perceptions of the Business Environment

**Parasuram Balasubramanian**, Washington U. in St.  
Louis, Olin Business School



## Competing for Emerging Markets: A Resource Dependence Model of Foreign Market Entry Mode

**Maurice Jerel Murphy**, U. of Southern California

And the winner  
is...



**Maurice Jerel Murphy**, U. of  
Southern California

Competing for Emerging Markets: A  
Resource Dependence Model of  
Foreign Market Entry Mode



UNIVERSITY OF  
**SOUTH CAROLINA**  
Darla Moore School of Business



All finalists for IM Division Paper Awards are  
also finalists for IM Division  
CEIBS Best Paper Award

And the winner of  
the CEIBS Best  
Paper Award is...



**Kiattichai Kalasin**, National Institute  
of Development Administration

**Klaus Meyer**, Ivey Business School



Stigma Avoidance and the Delay of  
Foreign Exits of Emerging Economy  
Multinational Enterprises



## William H. Newman Award Nominee:

Bird in Hand or Two in the Bush: Location Choices Specific to Present Vis-à-vis Future Buyers

**Toshimitsu Ueta**, Copenhagen Business School



## Carolyn Dexter Award Nominee:

Intercultural communication challenges in East-East encounters

**Hyun-Jung Lee**, London School of Economics

**Katsuhiko Yoshikawa**, Shanghai Jiao Tong U.

**Carol Wasbauer Reade**, San Jose State U.





## Emerald Best International Symposium Award Nominee:

### Exploring Multilevel Issues in the Integration of Skilled International Migrants

Organizers:

**Minna Marinova Paunova**, Copenhagen Business  
School

**Kyle Ehrhardt**, U. of Colorado, Denver



# Huge thanks to...

- Everyone who submitted!
- Everyone who reviewed!
- Most of all, Brett Edgerton!





# IM Division 2018 Best Reviewers

Eren Akkan*	Jesper Edman***	Jakob Müllner**
Snehal Awate	Johann Fortwengel	Karishma Nagre*
Benjamin Bader	Katia De Melo Galdino	Michael Nippa*
Heather Berry	Renfei Gao	Sonia C. Oliveira
Moritz Botts	Tao Han	Linda Rademaker*
Brent Burmester	Andreas Hartmann	Rajeev J. Sawant
Anthony Cannizzaro	Vanessa C. Hasse**	Jan Schmitt
Hyundo Choi	Andreas Stefan Hundschell	Gerhard Schnyder
Eliane Choquette	Nandini Lahiri	Riki Takeuchi*
Daniel Richard Clark*	Nathaniel Lupton	Lisa Tang
Luis Alfonso Dau*	John Mezas*	Markus David Taussig
Roisin Donnelly	Gonzalo Molina Sieiro	



Committee Consists of  
**Sam Park (Chair), CEIBS**

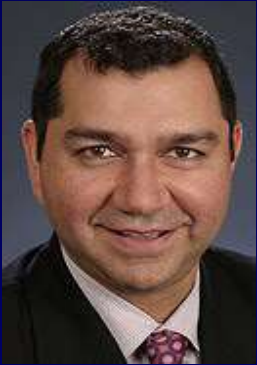


**Art Kleiner, PWC Strategy &  
Sea-Jin Chang, NUS & KAIST**





Sri Zaheer,  
University of Minnesota



Committee Consists of Three Past  
Division Chairs



**Jay Anand**, Ohio State University

**Alvaro Cuervo-Cazurra**, Northeastern  
University



**Sea-Jin Chang**, NUS & KAIST



**Prithwiraj Choudhury**  
Harvard Business School



**Sinziana Dorobantu**  
New York University





Committee Consists of Three Past  
Division Chairs



**Jay Anand**, Ohio State University

**Alvaro Cuervo-Cazurra**, Northeastern  
University



**Sea-Jin Chang**, NUS & KAIST



Outstanding Service to  
the Global Community  
Award



**Stephen B. Tallman**  
**University of Richmond**



# Amorepacific Outstanding Educator Award



**Christopher Bartlett,**  
Harvard Business School



Economic Reliance on National Markets and the  
Corporate Provision of Public Goods: Evidence  
from Corporate Disaster Philanthropy

**Luis Ballesteros**, George Washington  
University (*PhD from University of  
Pennsylvania, Wharton*)



Institutional Voids, Investment Purposes, and  
Foreign Subsidiaries of Multinational Enterprises

**Yamlaksira Getachew**, Loyola  
Marymount University (*PhD from  
University of Western Ontario*)



Essays on Emerging Multinational Enterprises'  
Acquisitions in Developed Economies

**Faisal Harahap**, University of Redlands  
(*PhD from Florida International  
University*)



Foreign MNEs and Nonmarket Strategy

**Jin Hyung Kim**, George Washington  
University (*PhD from Harvard Business  
School*)



And the winner is...



**Jin Hyung Kim**, George  
Washington University (*PhD from  
Harvard Business School*)

Foreign MNEs and Nonmarket Strategy

## Jay Anand



for his outstanding contributions to the International Management Division of the Academy of Management as a member of the executive committee from 2014 to 2018



**Katherine Xin**  
PDW  
Chair



**Jaeyong Song**  
Program  
Chair



**Anu Phene**  
Division  
Chair-Elect



**Elizabeth Rose**  
Division  
Chair



**Aya Chacar**  
Immediate Past  
Division Chair



# AOM 2019 in Boston!



**And we know where we are going for ~10 years!**

**2019 Boston, Massachusetts, August 9-13**

**2020 Vancouver, BC, Canada, August 7-11**

**2021 Philadelphia, Pennsylvania, July 30-August 3**

**2022 Seattle, Washington, August 5-9**

**2023 Boston, Massachusetts, August 4-8**

**2024 Chicago, Illinois August, 9-13**

**2025 TBD ?Copenhagen**

**2026 Philadelphia, Pennsylvania August, 10-14**

**2027 Seattle, Washington, July 30-August 3**



- House of Blues
  - 329 N Dearborn St, Chicago, IL 60654
  - Now!!!
  - Bring your badge and your dancing shoes!



10 minute walk from HRC