



American Statistical Association

# **Council of Sections**

## **JSM Business Meeting**

Friday, August 6th, 1:00-3:00PM EST

# Agenda



## 2021 COS Business Meeting Agenda

- COSGB Reports:
  - 10 min: Welcome/Chair Report (Sarah Kalicin)
  - 10 min: Treasurer Report (Abel Rodriguez)
- ASA Executive Leadership Dialogue:
  - 15 mins: (Ron Wasserstein, Kathy Ensor )
- Facilitating Strong Sections and Interest Groups
  - 10 mins: [2021 Annual Report](#) - (Alyson Wilson)
  - 5 mins: Special Initiatives [Social Media in a Bag](#) (Sarah Kalicin)
- Special Guests:
  - 10 mins: JEDI - (Donna LaLonde)
  - 10 mins: Committee on International Relations in Statistics (CIRS)
  - 10 mins: ASA/Corporate Partnerships (Amanda Malloy)
  - 10 mins: ASA Committee on Membership (Terri Utlaut).
- Group Open Discussion:
  - 25 mins - Section opportunity for questions and help (Everyone)
- Wrap up
  - 5 mins (COSGB)

# Introductions: COSGB Members

## Chair

Sarah Kalicin

## Past Chair

Ofer Harel

## Chair-Elect

Jason Roy

## Secretary

Beth Andrews

## Treasurer

Abel Rodriguez

## ASA Liaison

Rick Peterson

## Board Representatives

Mark Glickman

Rebecca Hubbard

Kate Calder

## Vice Chairs

Alyson Wilson

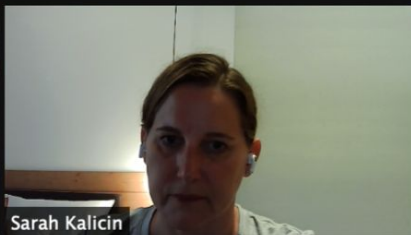
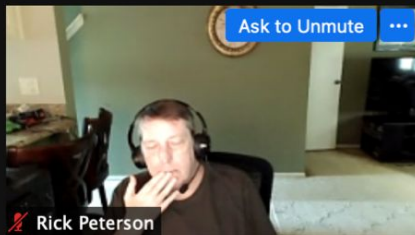
Elizabeth Slate

Scarlett Bellamy

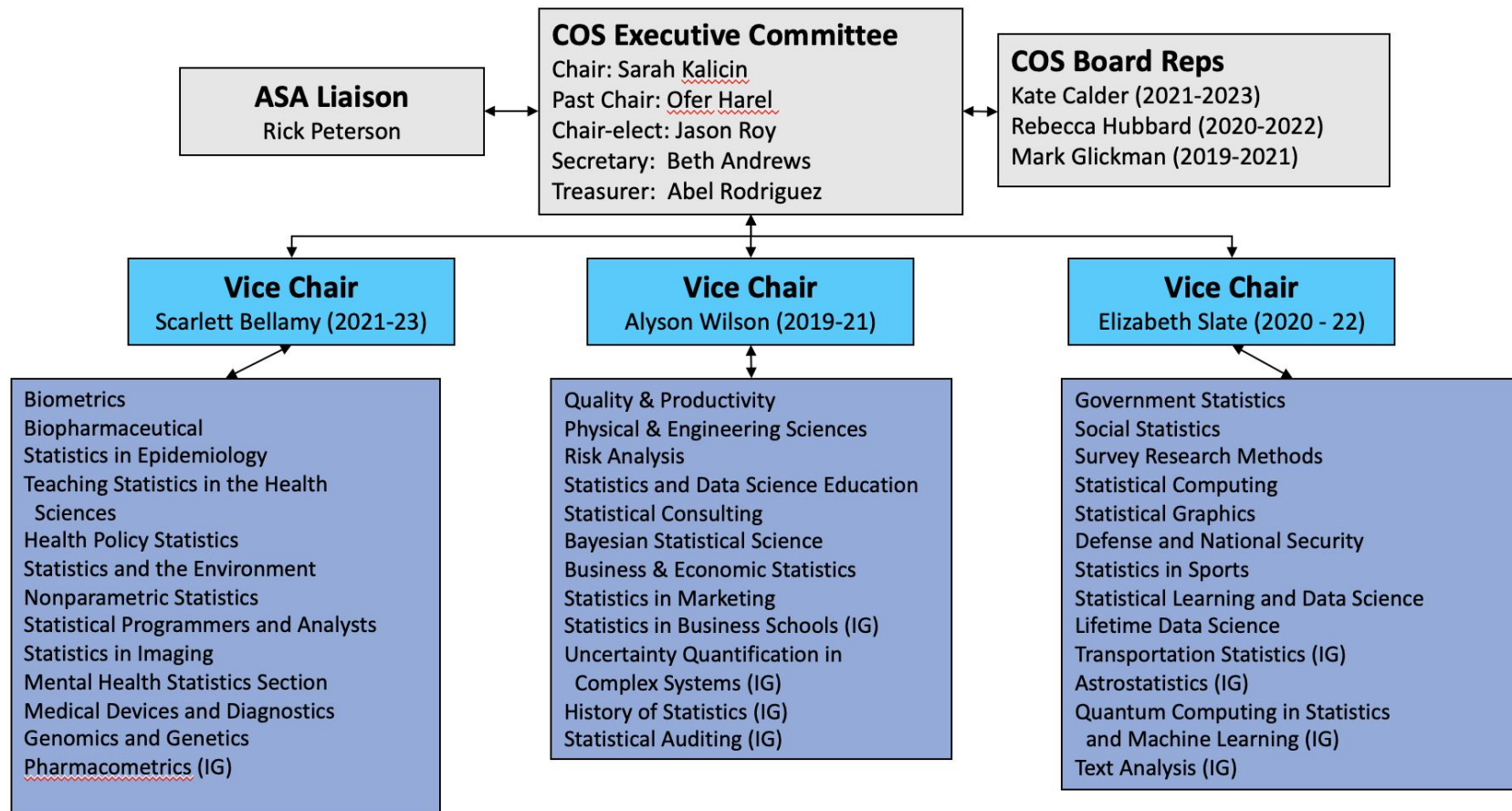
Thank you to the Officers  
finishing their leadership service!

Congratulations to our 2022 Officers:

- **Chair-elect:** Susan Paddock
- **Vice Chair-elect:** Beth Andrews
- **Board Rep:** Michelle Shardell



# Council of Sections Governing Board





- The ASA needs Sections that are strong and well-functioning. All sections should be:
  - Engaging with their membership
  - Delivering the services and resources that benefit current members
  - Promoting their activities to attract new members
- Building on the work of recent years, the COSGB focused on:
  - Providing a report to all sections on overall section health in the COS
  - Communicating our value to our members
  - Building diversity initiative awareness within the ASA

# Resources

- Rick Peterson, ASA Liaison to COS, [rick@amstat.org](mailto:rick@amstat.org)
- COS Web Page
  - <http://community.amstat.org/councilofsections/home>
  - Links to a variety of resources.
- COS Community Page
  - Go to ASA Community Site, and choose COS from “My Committees”.
  - Includes material only visible to COS Members.


# COSGB Announcements



- Welcome ASA's Newest IG
  - Record Linkage IG (Chaired by Dean Resnick and Jana Asher)
- [Anti-Racism Task Force](#) (Link to JSM committee meeting)



# Call for Nominations for Officers



Appointed (For Fall 2021):

- 1 person - *Evaluation Subcommittee of the ASA Advisory Committee on Continuing Education* (Sarah)
- 3 person - COSGB Nomination Committee (Jason Roy)
- FOC Committee - 1 past treasurer (Abel Rodriguez)

Elected Positions:

- COSGB Chair-elect (2023-2025)
- COSGB Vice Chair (2023-2025)
- COSGB Board Rep (2023-2025)

Appointed Positions

- Secretary (2022-??)
-



# COSGB Treasurer Report

Abel Rodriguez



# Agenda

- Role of COS Treasury
- Fiscal Oversight Committee Report
- Advise on addressing large balances
- Key Upcoming Dates
- Other Reminders
- Q&A



# Role of COS Treasury

- **Ensuring Sections' Financial Health**
- COS Treasurer is appointed by COSGB
- Sustain Fiscal Oversight Committee (FOC)
  - FOC members: Abel Rodríguez (Treasurer, Chair), Robert Oster and Amanda Hering
  - Review section balances
  - Review section cash flows
  - Key metrics: (1) Final Balance to Actual Expenses, (2) Final Balance to Budgeted Expenses, (3) Balance to Total Membership.
- Liaise between Sections & ASA
- Ensure section budgets' timely submission



## Current FOC Report

- All sections submitted a 2021 Budget (although a few were very late)
- All 29 sections were solvent in 2020
- Median balance across section was \$20,523.94, with a minimum of \$3,782.13 (SGG) and a maximum of \$465,245.94 (BIOP)
- 21 sections seeing an increase in their balance (activities canceled during the pandemic?)
- Two sections in clear financial distress, another 4 at risk
- Two sections with very large balances, another 4 with large balances
- Total ASA Section membership dropped substantially (~10%)



## Recommended actions to address large balances

- Money should be spent on activities that are of interest to their members. Having a large balance should be seen as an opportunity to provide more member benefits
  - Reduced section dues
  - Partial reimbursement of ASA dues
  - Student travel awards
  - Member awards
  - Reduced conference fees
  - Co-sponsoring an initiative of mutual interest with a less well-funded section
  - “Donate” the funds to support ASA initiatives (reach out to Amanda Malloy for ideas)
  - In-house strategic initiative
- Sections with large balances have more limited access to Strategic Initiative Fund



# Key Upcoming Dates

- 10-Aug-2021: Any changes in dues structure to ASA
- 31-Oct-2021: 2022 Section Budgets due
  - Emailed to the COS Treasurer: [abelrod@uw.edu](mailto:abelrod@uw.edu)
  - BY CURRENT SECTION TREASURER
  - Conference Budgets Separate (Biopharm, HPSS, Q & P, SRC, BiopharmNCB) or jointly (all others).
- Dec2020/Jan2021: FOC will respond with questions
- Possibly questions on large expenditures or actions to address balance issues (as needed)



# Reminders

- Sections should discuss 2021 budgets NOW
  - Should be agenda topic at JSM 2021
  - Budgets are a responsibility of the sections' executive committees
- Spend down large section balances
- Address sustainability for section in financial distress
- Transition plans for any Treasurers-Elect
  - Confirm with ASA HQ to ensure electronic access
  - Current treasurer to provide transition plan
  - Communicate with past Treasurer
- See Budget Guidance for Section Treasurers







# ASA Executive Leadership

Ron Wasserstein & Kathy Ensor



# **Facilitating Strong Sections and Interest Groups**



# 2021 Annual Report

Alyson Wilson (Vice-Chair)

# Annual Section/IG Questionnaire



## Why?

- One of several measures to assess section and interest group health
- Sharing of best practices

## How?

- Sections and IGs fill out required annual questionnaire
- COSGB Vice-Chairs compile, analyze, document and present

## Timeline

- Link shared early November
- Responses due December 31
- Results shared with sections and IGs before JSM

# Results from Annual Section/IG Questionnaire



## Topic Areas

- Overall performance
- Communications
- Meetings and Networking
- Professional Development and Continuing Education
- Support for students, young researchers, and new statisticians
- Recognition and Awards
- Leadership Development and Mentoring
- Outreach Activities
- Section/IG Executive Board/Committee Duties

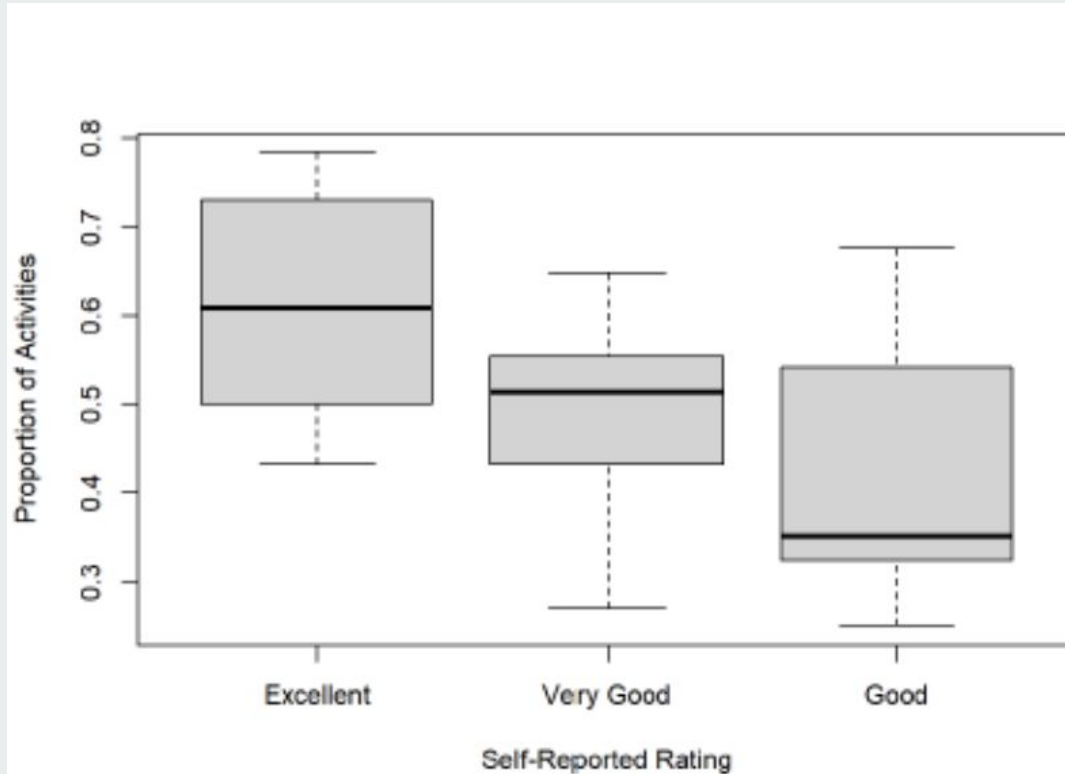
***Responses from 27 sections and 8 interest groups***

# Overall Performance



	Section Count	IG Count
Excellent	12	2
Very Good	11	4
Good	3	2
Fair	0	0
Poor	0	0
Did not respond	1	0

# Overall Performance





# Communication



Submit articles to AmStat News?

	Section Count	IG Count
Yes	16	2
No	11	6

Use social media to communicate with members?

	Section Count	IG Count
Yes	8	3
No	19	5

# Awards

Student awards?

	Section Count	IG Count
Yes	24	3
No	3	5

Volunteer recognition awards?

	Section Count	IG Count
Yes	6	1
No	20	7

# Award for Outstanding Section Service



## **ASA Award for Outstanding Section Service (est. 2018)**

- This award provides each section with a way to acknowledge extraordinary contributions made by a particular section member.
- The award consists of a certificate, a listing in the JSM awards program, and a COSGB rep who will come present the award at your business meeting or mixer.
- Each section establishes procedures for selecting the winner and notifies the COSGB by late April of the winner.
- One-third of sections are eligible to present the award each year.

# Sections Eligible to Present in 2022



- Quality and Productivity
- Physical and Engineering Sciences
- Risk Analysis
- Statistical and Data Science Education
- Statistical Consulting
- Bayesian Statistical Sciences
- Business and Economic Statistics
- Statistics in Marketing

***Your COS Vice Chair will be in touch in February with more details.***

# Outreach



New member recruitment?

	Section Count	IG Count
Yes	12	7
No	15	1

Coordinate any activities with other sections/IGs?

	Section Count	IG Count
Yes	19	4
No	8	4



# **Social Media in a Bag**

## **SMiB**

Sarah Kalicin (Chair)

# Social Media in a Bag (SMiB)



- Help Sections leverage Social Media to better engage with members and potential members
- Feedback and crowd-source different Social Media Strategies
- Current document sections
  - Why Social Media is important
  - How to leverage different Social Media Platforms
  - Express Section and Member Value
  - Have a *Call-to-Action (CTA)*
  - Increase engagement
  - Dealing with negative or inappropriate responses
  - Measure impact with social media analytics
  - CTA for Sections
  - Appendix
  - Reference Materials



# Special Guest





# **JEDI Outreach Group & Other Diversity Initiatives**

Donna LaLonde (ASA Staff)

# Strategic Initiatives and Outreach

---

## Potential Collaborations

- Leadership Development
- Accreditation
- JEDI Outreach Group Leadership
- Professional Development
- Outreach Collaborations





# **Committee on International Relations in Statistics (CIRS)**

Carolina Franco

# CIRS Committee

- The CIRS Committee focuses on international outreach and communications
- Administers the Educational Ambassadors (EA) program, where scholars from other countries are selected on a competitive basis and sponsored to attend JSM and take short courses, with a focus on developing countries
- The scholars then go back to their home countries and teach graduate courses
- This year, the CIRS committee has several new initiatives. One of them is to assist EAs or other international members in starting student chapters (See spotlight article in Amstat News for more on other initiatives). We currently have an EA from Colombia and a CIRS member from Nigeria interested in starting one

# Our questions/requests

- We would like to identify resources available to student chapters in other countries (e.g., webinars, virtual mentorship programs, etc.) Can you help us identify opportunities that might be available through the Sections, or will become available?
- Are sections currently doing international outreach with developing countries? If so could you tell us about it, and how successful they have been?
- What are hot topics in statistics and data science that Sections can highlight? (For our website)
- How can we work together on international outreach to EAs and developing country members, especially students?
- Would Sections be willing to work with the committee to encourage EAs to be more active in Sections?



# ASA/Corporate Partnerships

Amanda Malloy



## **ASA Development Committee**

Mary Kwasny- Chair

Barry Nussbaum

Miles Ott

Steven Snapinn

Stan Altan

Juanita Lott

Ruixiao Lu

Andrew Dumit - ASA GivesBack representative

# Engage

We're improving the public and media's statistical literacy.



# Advocate

We're advocating for statisticians and the proper use of statistics among policymakers.



# Grow

We're cultivating future leaders in statistics and data science.



# Educate

We're improving K-12 statistics education.







## Current ASA Partner levels

ASA Innovation Partner - \$25,000+

ASA Mission Partner - \$10,000

ASA Program Partner - \$5,000

ASA Ally - \$2,500

ASA Friend - \$1,000



## Contact Info

Amanda Malloy

Director of Development

[amanda@amstat.org](mailto:amanda@amstat.org)

703-302-1861



# **ASA Committee on Membership Retention and Recruitment (CMRR)**

## **Membership Needs Assessment**

Teri Utlaut (Chair)  
Yingwen Dong  
Will Eagan  
Amy Farris  
Kim Gilliam  
Donna LaLonde

Taylor Lewis  
Mark Otto  
Anindya Roy  
Mark Ward  
Glenn White  
Erin Wiley (Vice Chair)

# Membership Needs Assessment (MNA)

## Why do an MNA?

**Assessment of membership needs is an integral part of any vibrant organization.**

Properly addressing membership challenges will result in sustained long-term growth of the organization, as well as promote member participation in ASA activities.

## What is the objective?

The main objective is to gain insight into what members of the ASA value most about their membership and why individuals join and leave the ASA.

## How and when will it be done?

The CMRR has been charged with organizing and conducting **virtual** focus groups with direct input from the membership council and other interested parties. Most of the focus group sessions will happen during the rest of 2021.

## How can I help?

There are many different roles in this effort (liaison, facilitator, notetaker, analyst, participant, promotor – see two next slides for details). If you are interested in helping, please contact Donna LaLonde (donnal@amstat.org) or Teri Utlaut (theresa.l.utlaut@intel.com).

# Membership Needs Assessment Roles/Help Needed

**Be a liaison:** Work directly with the CMRR and provide information to your committee or group for those who are interested in participating in this effort.

**Be a facilitator:** The success of the focus groups depends largely on how well a trained facilitator structures and directs the discussions. A good facilitator should have experience facilitating groups and have knowledge about the topic. Often, it is best to find trained leaders within the organization (ASA) who can guide the groups. We are reaching out to you to identify volunteers from your group who could act as a facilitator.

**Be a notetaker:** The focus group sessions will be recorded, and we will have transcripts, but a notetaker can highlight items that might not be obvious from a recorded transcript.

**Be an analyst:** There will be a lot of information collected in each focus group. We will need people to listen to and read the transcript and turn the thoughts and ideas from the focus groups into information.

# Membership Needs Assessment Roles/Help Needed

**Be a participant:** The composition of the focus groups should be diverse (e.g., across genders and ethnicities, career stages and types, etc.). Input from the perspective of an ASA committee/section/chapter member will be valuable toward the success of the focus group. We are seeking volunteers from several ASA groups to participate in a variety of focus groups related to ASA membership needs.

**Be a promoter among other relevant groups:** We need broad-based participation from past/present and potential members of the ASA. We will determine how best to align members of focus groups and then ask for help with the promotion of particular focus groups.



# Group Open Discussion

Sections Opportunity for Questions and Request for Help

# Useful Websites



Leadership Hub:

<https://community.amstat.org/asaleaderhub/home>

Council of Sections:

<https://community.amstat.org/councilofsections/home>



- Jan 15 - Student paper award winners notified
- Feb 4 - JSM 2021 roundtable/luncheon with speaker submitted
- Apr 30 - JSM 2021 meetings and events requested
- Apr 22 - Outstanding Section Service Awards submitted
- Jun 1 - JSM 2021 awards submitted
- Aug 10 - Proposed Section dues changes requested
- Sep 8 - JSM 2022 invited sessions submitted
- Sep 30 - JSM 2022 continuing education proposals submitted
- Oct 31 - Section budgets submitted
- Nov 15 - Election slates submitted
- Dec 10 - JSM 2022 topic contributed sessions submitted
- Dec 15 - Student paper competitions close
- Dec 31 - Charter revisions submitted
- Dec 31 - Annual report/questionnaire submitted


Sections	Interest Groups
<ul style="list-style-type: none"> <li>• Membership restricted to ASA Members</li> <li>• <u>Dues are collected</u> by ASA</li> <li>• Money is held in ASA accounts.</li> <li>• COS Representation via Section Representatives, who may vote.</li> <li>• Membership rosters maintained by ASA.</li> <li>• Officer elections handled by ASA.</li> <li>• Invited Sessions at JSM <ul style="list-style-type: none"> <li>◦ Allocated invited sessions</li> <li>◦ May compete for additional sessions</li> </ul> </li> <li>• Topic Contributed Sessions at JSM <ul style="list-style-type: none"> <li>◦ Allocated TC sessions</li> <li>◦ May compete for additional sessions</li> </ul> </li> <li>• Meeting space at JSM</li> <li>• ASA-supported web presence</li> <li>• Submit articles to AmStat News</li> </ul>	<ul style="list-style-type: none"> <li>• <i>Membership open to non-ASA members (Chair must be ASA member)</i></li> <li>• Dues are not collected by ASA.</li> <li>• Money is not held in ASA accounts (must arrange for your own bank account).</li> <li>• <i>Interest Groups may access \$1000 per year from ASA</i></li> <li>• COS Representation by the Chair, who may not vote.</li> <li>• Membership rosters not maintained by ASA.</li> <li>• Officer elections not run by ASA</li> <li>• Invited Sessions at JSM <ul style="list-style-type: none"> <li>◦ No allocation</li> <li>◦ <i>May compete for sessions</i></li> </ul> </li> <li>• Topic Contributed Sessions at JSM <ul style="list-style-type: none"> <li>◦ <i>Allocated one TC session</i></li> <li>◦ May compete for additional sessions</li> </ul> </li> <li>• Meeting space at JSM</li> <li>• ASA-supported web presence</li> <li>• Submit articles to AmStat News</li> <li>• <i>While new Sections must be IGs first, there is no assumption that an IG will become a section.</i></li> </ul>

# Questions/Feedback?



- Guest speakers?
  - JEDI
  - Committee on International Relations in Statistics (CIRS)
  - ASA/Corporate Partnerships
  - ASA Committee on Membership
- Social Media in a Bag
- How ASA can support your activities?
- How can the sections help ASA grow membership?

# Wrap Up

- 
- We will email what to discuss with your section
  - Response Meeting (August 20th, 1:00-3:00 PM EST - Same Zoom link)

*We want your feedback*

**Thank you for your service!**