

Pavlov's Cataloger and Schrödinger's Data:

Teaching Linked Data at NLM

Tina Shrader

Cataloging and Metadata Management Section

Technical Services Division

National Library of Medicine

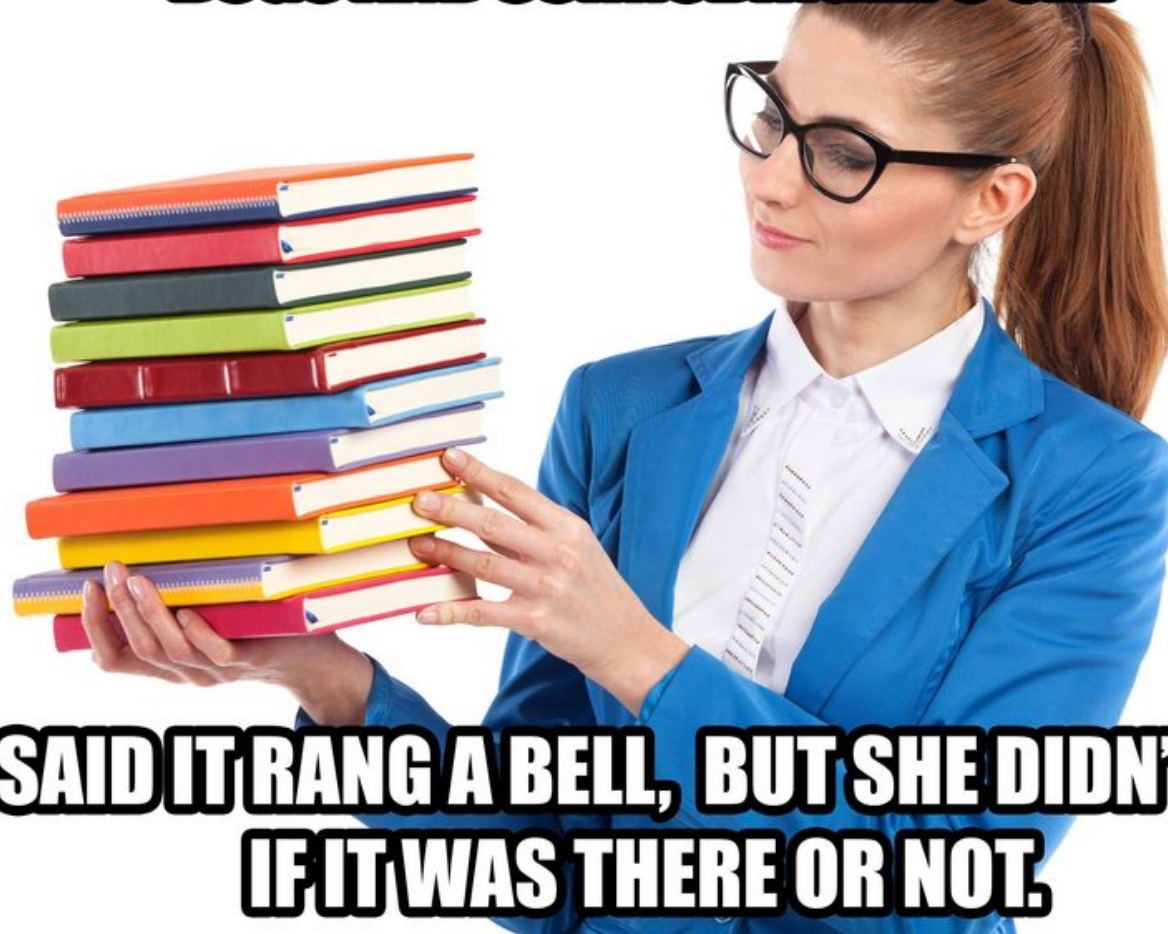
National Institutes of Health

U.S. Department of Health & Human Services



U.S. National Library of Medicine

**I ASKED THE LIBRARIAN FOR A BOOK ABOUT PAVLOV'S
DOGS AND SCHRÖDINGER'S CAT**



**SHE SAID IT RANG A BELL, BUT SHE DIDN'T KNOW
IF IT WAS THERE OR NOT.**

[Image](#) from Picrail



U.S. National Library of Medicine

LD4PE Competencies

<http://explore.dublincore.net/>

- Fundamentals of Resource Description Framework (RDF)
- Fundamentals of Linked Data
- RDF vocabularies and application profiles
- Creating and transforming Linked Data
- Interacting with RDF data
- Creating Linked Data applications

Image by [Katrin B.](#) from [Pixabay](#)



U.S. National Library of Medicine

LD4PE Competencies



- [Resources for Librarians](#)
- [Resources for Catalogers](#)
- [PCC Standing Committee on Training Recommended Linked Data Training Resources for Catalogers](#)

Image by [Richard Smith](#) is licensed under [CC BY-NC 2.0](#)



U.S. National Library of Medicine

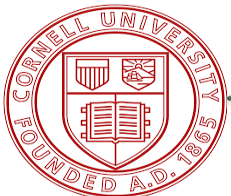
So, why do you
need me?



U.S. National Library of Medicine

Image by [Retta \(Loretta\) Stephenson](#)
is licensed under [CC BY-NC 2.0](#)

NLM Linked Data Activities



National Forum on Shareable
Name Authorities



INSTITUTE of
Museum and Library
SERVICES



PCC

Program for
Cooperative Cataloging

BIBCO / CONSER / NACO / SACO

Task Group on Linked Data Best Practices

Linked Data Advisory Committee

Task Group on Adding URIS to MARC

BIBFRAME Task Group: CONSER and BIBCO Subgroups

Bibframe Lite



RDF

BIBFLOW



Person Entity Lookup Pilot
Linked Data Wikibase Prototype



MarcEdit



SHARE Virtual
Discovery
Environment



casaliniLibri
@cult



U.S. National Library of Medicine

NLM's Linked Data Training

- Modeling and conceptual
- Hands-on experimentation

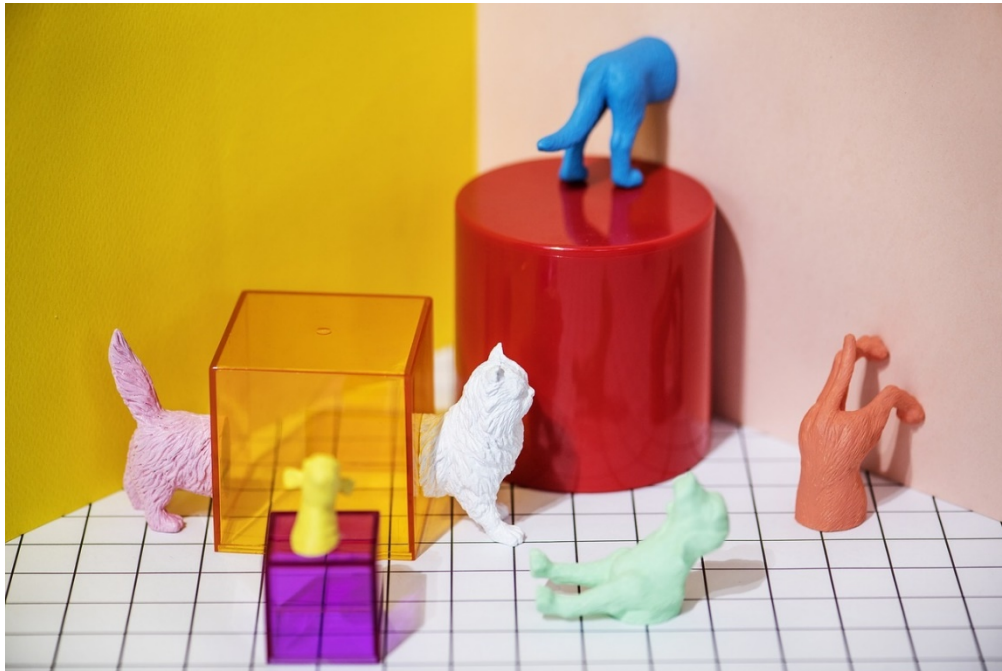
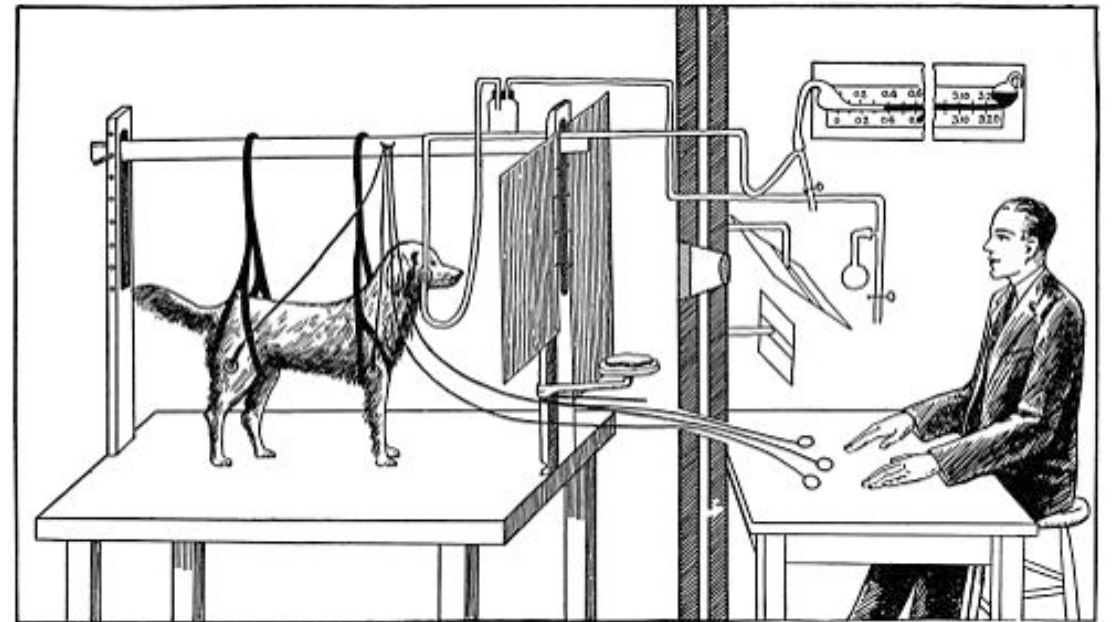


Image by [rawpixel](#) from [Pixabay](#)



[This image](#) from [Wellcome Images](#) is licensed under [CC BY 4.0](#)

PCC Mapping Projects

- CONSER Standard Record (CSR) and BIBCO Standard Record (BSR) to BIBFRAME
- Matched RDA data elements to BIBFRAME properties
- Identified RDA data elements without BF properties
- Provided feedback to BF developers
- Identified areas where community standards were needed



Image by [Vanessa](#) is licensed under [CC BY-ND 2.0](#)



U.S. National Library of Medicine

PCC Mapping Projects

Competencies Addressed

- Fundamentals of RDF
 - Identity in RDF
 - RDF Data Model
 - RDF Serialization
- Fundamentals of linked data
 - Linked data principles

Potential classroom applications

- Mapping across different vocabularies



This image by [DailyLoIPics .com](http://DailyLoIPics.com) is licensed under [CC BY 2.0](https://creativecommons.org/licenses/by/2.0/)

Assigning URIs to MARC fields

- OCLC asks PCC URI Task Group for guidance determining the RDF Object in MARC data fields
 - What parts of a MARC field should match the label represented by a URI?
 - Analyzed each MARC field in terms of RDF triples, identifying subject/predicate/object
 - Determined whether a URI should be added to each MARC field to facilitate conversion to RDF



Image by [Loren Javier](#)
is licensed under [CC BY-ND 2.0](#)

Assigning URIs to MARC fields

Example in MARC:

245 00 Pavlovian response

650 12 \$a Sialorrhea

As a triple:

Subject	Predicate	Object	URI?
Pavlovian response	hasSubject (MeSH)	Sialorrhea	Yes



Image by [Elf](#) is licensed under [CC BY-SA 3.0](#)



U.S. National Library of Medicine

Assigning URIs to MARC fields



This image is in the public domain

Competencies addressed

- Fundamentals of RDF
- Fundamentals of linked data

Potential classroom applications

- Mapping existing metadata schemes into a triple structure
- Identifying elements that could be represented by URIs

OCLC Linked Data Prototype

- aka “Project Passage”
 - Wikibase platform
 - Experimental framework for creating and managing bibliographic and authority data as linked data entities and relationships
 - Participants used actual resources from collections to create descriptions of entities and relationships



U.S. National Library of Medicine

Image by [Gisela Merkuur](#)
from [Pixabay](#)



Linked Data Prototype

- NLM's participation
 - Postcard from NLM's History of Medicine Division
 - Issues
 - Digitization and sources of description
 - Creation of statements for objects
 - Disambiguation of entities



*Postcard with image of
Princess Maria Josepha of
Saxony in a nursing uniform
([image source](#))*



U.S. National Library of Medicine



Linked Data Prototype



Image by [Free-Photos](#) from [Pixabay](#)

Competencies addressed

- Fundamentals of linked data
- Creating and transforming linked data
- Interacting with RDF data

Potential classroom applications

- Experiment with Wikidata.org
- Set up a Wikibase instance for classroom experimentation



U.S. National Library of Medicine

schema.org

SEO Project

- Mapped metadata to schema.org
- Added URIs to metadata with MARCNext
- Created JSON-LD files
 - Validated with Google tool
- Inserted JSON-LD files into HTML
- Configured Google Analytics and Search Console to monitor results



schema.org

SEO Project

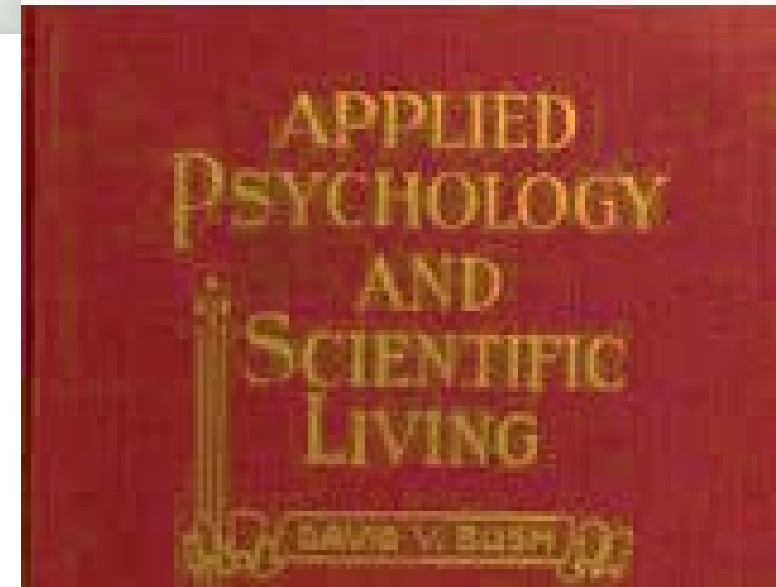
Competencies addressed

- Creating and transforming Linked Data
- Interacting with RDF data



Potential classroom applications

- Partner with institutional repository
- Experiment with adding linked data to specific resources or sets of resources
- Track usage



U.S. National Library of Medicine



LD4P2

Competencies addressed

- Fundamentals of RDF
- RDF vocabularies and application profiles
- Creating and transforming linked data
- Interacting with RDF

Classroom applications

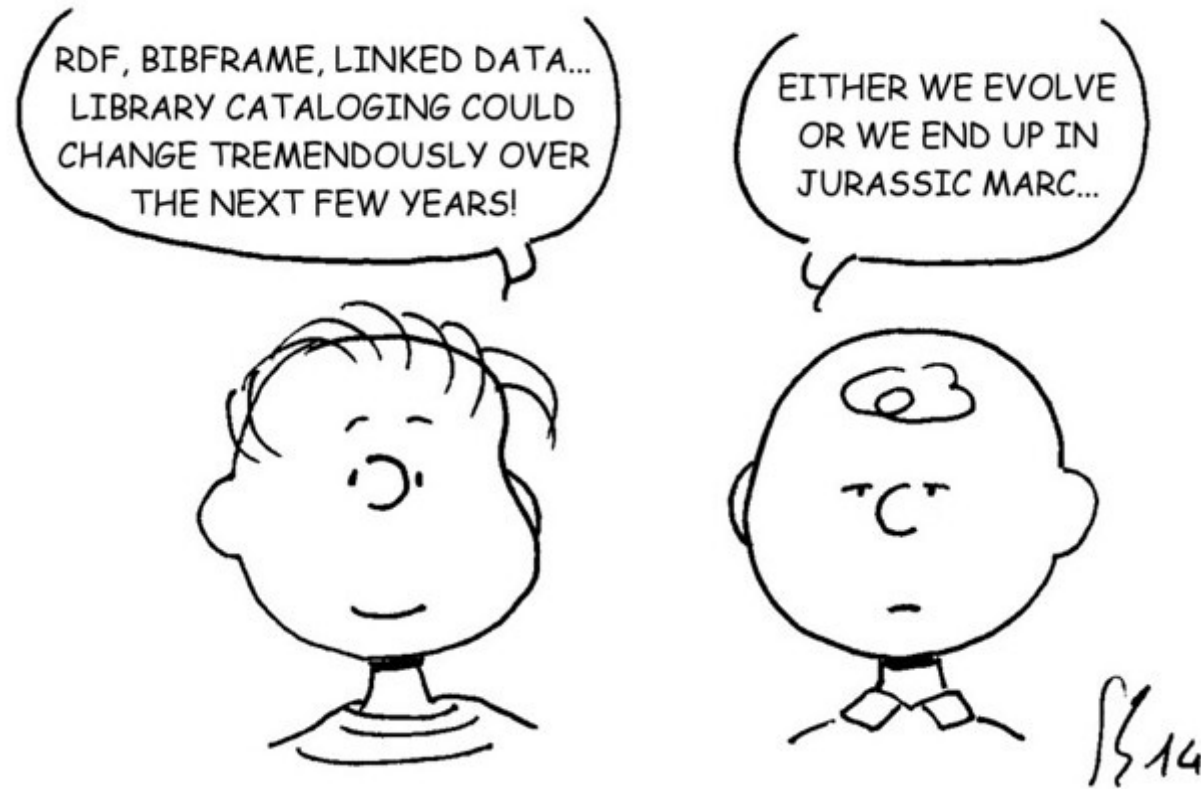
- Use LC's BIBFRAME editor to describe resources
- Analyze RDF output

Image by [Lynn \(Gracie's mom\)](#) is licensed under [CC BY-NC-ND 2.0](#)



U.S. National Library of Medicine

Final Thoughts



Follow Peanuts Reloaded at <http://www.flickr.com/photos/steveb59/>

Image by [Peanuts Reloaded](#) is licensed under [CC BY-NC-ND 2.0](#)



U.S. National Library of Medicine

Acknowledgements

- NLM's LD4P2 Project Team
 - Nancy Fallgren
 - (Project Lead)
 - Diane Boehr
 - Barbara Bushman
 - Jen Diffin
 - Jennifer Marill



Image by [cocoparisienne](#) from [Pixabay](#)



U.S. National Library of Medicine

Questions

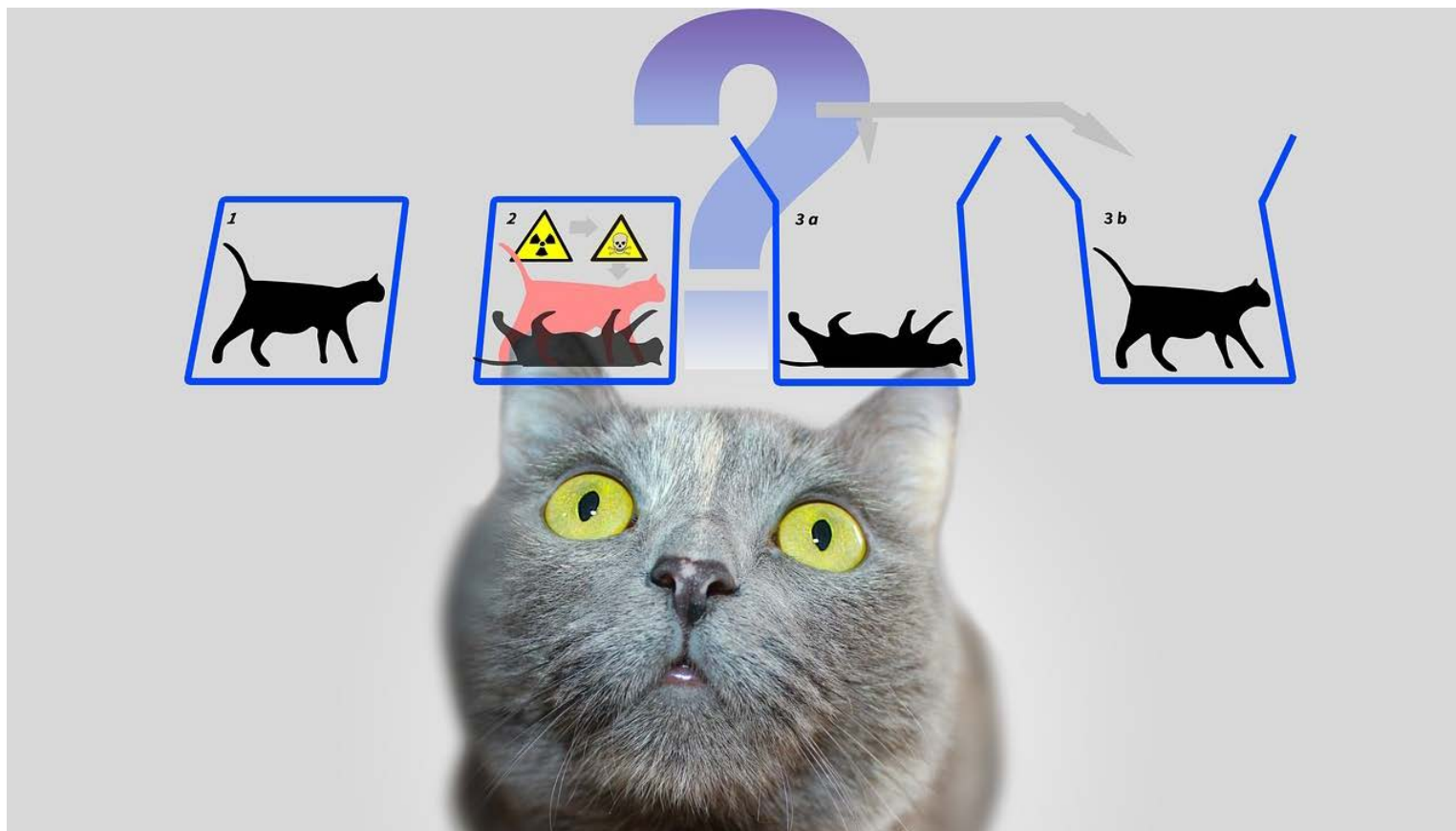


Image by [Gerd Altmann](#) from [Pixabay](#)