

Cataloger Tasks as a Framework for Cataloging Education

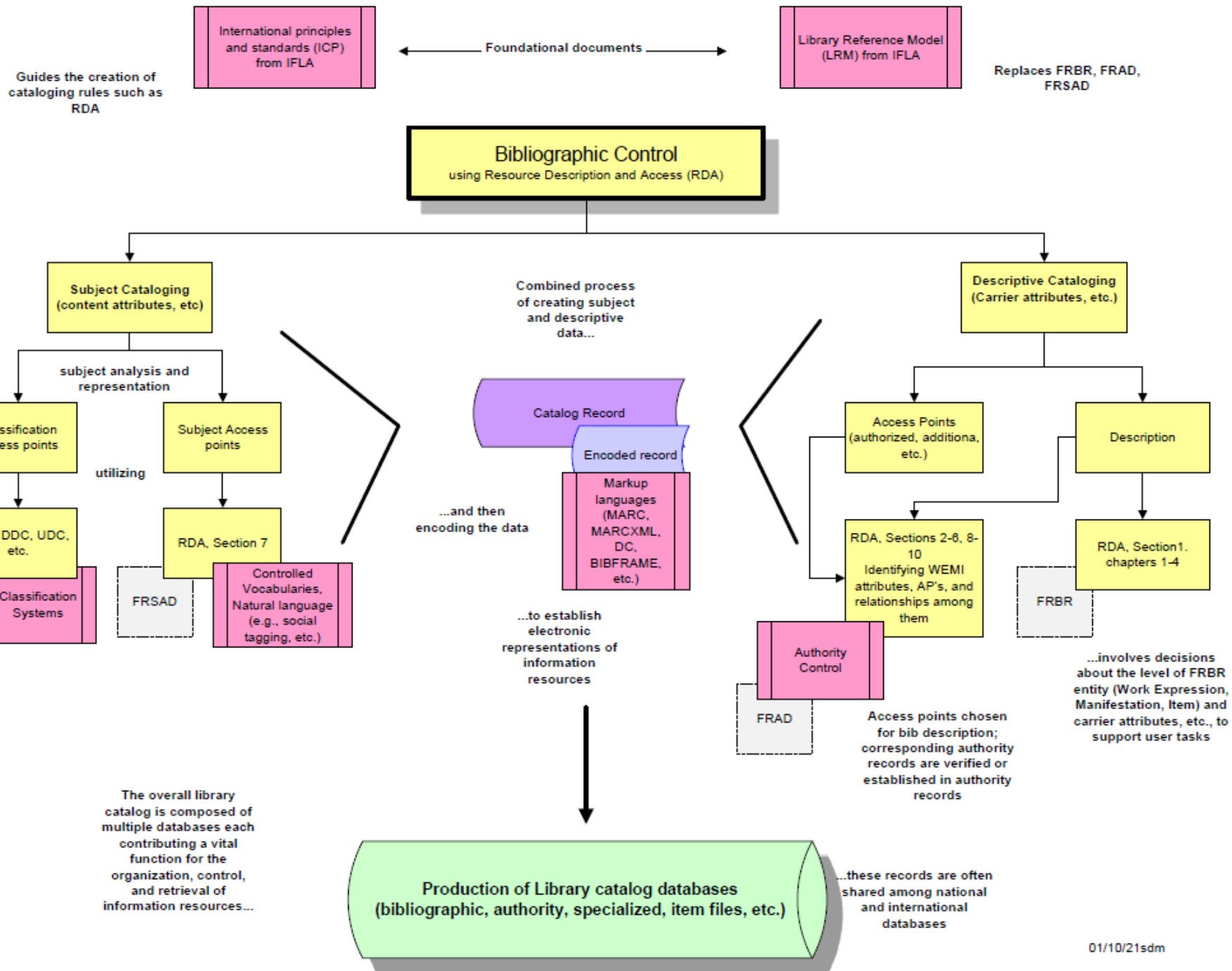
Shawne D. Miksa

Associate Professor

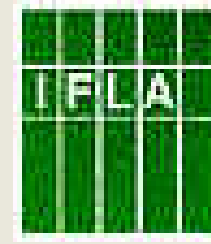
Dept. of Information Science, College of Information

University of North Texas

Shawne.Miksa@unt.edu

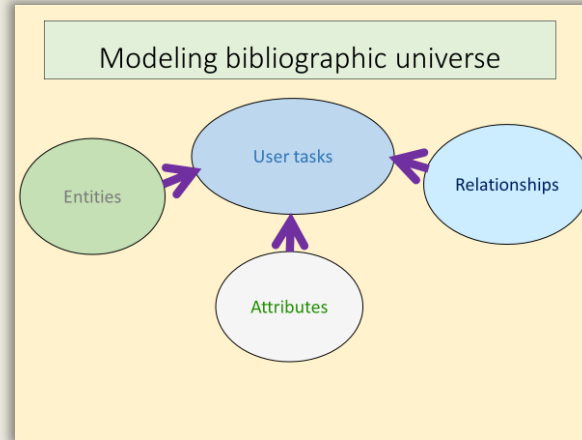


Library Reference Model (LRM)



User tasks

- Find
- Identify
- Select
- Obtain
- Explore



Entity-relationship model (FRBR)

- Entities: Group 1, 2, 3
- Relationships
- Attributes

National level record elements (*mandatory & optional data*)



International Federation of
Library Associations and Institutions

IFLA Library Reference Model
A Conceptual Model for
Bibliographic Information

Pat Riva, Patrick Le Bouef, and Maja Žumer

Consolidation Editorial Group
of the IFLA FRBR Review Group

Definition of a conceptual reference model to provide a framework for the
analysis of non-administrative metadata relating to library resources

August 2017
Revised after world-wide review
Endorsed by the IFLA Professional Committee

Library Reference Model (LRM)



User tasks

- Find
- Identify
- Select
- Obtain
- Explore

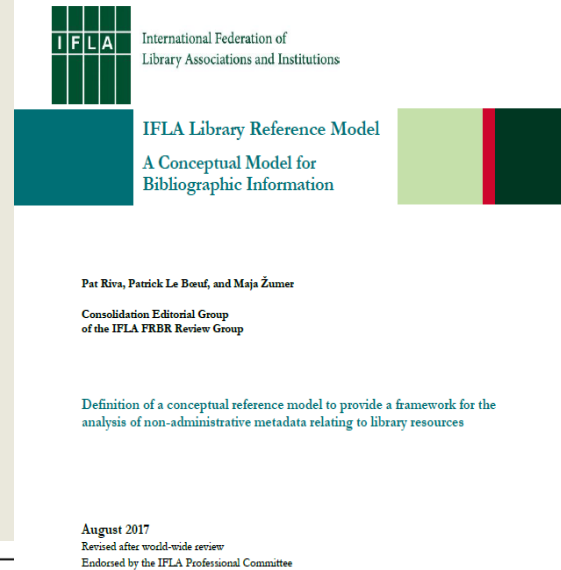
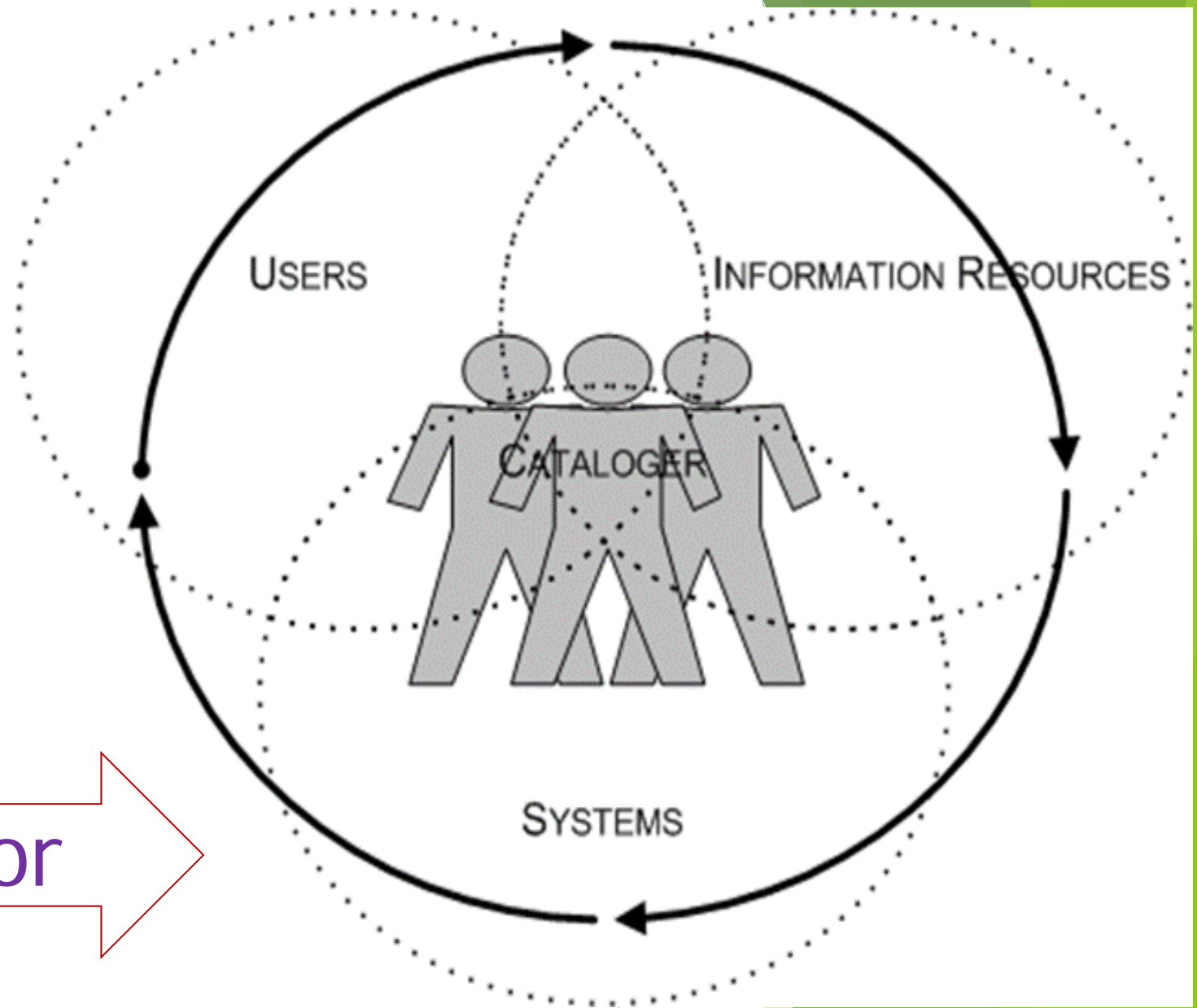


Table 3.1 User Tasks Summary

Find	To bring together information about one or more resources of interest by searching on any relevant criteria
Identify	To clearly understand the nature of the resources found and to distinguish between similar resources
Select	To determine the suitability of the resources found, and to be enabled to either accept or reject specific resources
Obtain	To access the content of the resource
Explore	To discover resources using the relationships between them and thus place the resources in a context

Cataloger's role



Information translator

Catalog Objectives ↔ User Tasks

- ▶ **Cutter**
 - ▶ To find
 - ▶ To show
 - ▶ To assist
- ▶ **F. Miksa**
 - ▶ Known-item
 - ▶ Category search
- ▶ **Svenonius**
 - ▶ Locate
 - ▶ Identify
 - ▶ Select
 - ▶ Obtain
 - ▶ Navigate



- ▶ **User Tasks**
 - ▶ **FRBR**
 - ▶ Find
 - ▶ Identify
 - ▶ Select
 - ▶ Obtain
 - ▶ **FRAD**
 - ▶ Find
 - ▶ Identify
 - ▶ Contextualize
 - ▶ Justify
 - ▶ **FRSAD**
 - ▶ Find
 - ▶ Identify
 - ▶ Select
 - ▶ Explore



Assessing user needs

- **User Tasks**
 - **LRM**
 - Find
 - Identify
 - Select
 - Obtain
 - Explore

Identifying the main cataloger tasks

- RDA

RDA Table of Contents

+ 0: Introduction

- + Section 1: Recording Attributes of Manifestation & Item
- + Section 2: Recording Attributes of Work & Expression
- + Section 3: Recording Attributes of Agents
- + Section 4: Recording Attributes of Concept, Object, Event & Place

- + Section 5: Recording Primary Relationships Between Work, Expression, Manifestation, & Item
- + Section 6: Recording Relationships to Agents
- + Section 7: Recording Relationships to Concepts, Objects, Events, & Places
- + Section 8: Recording Relationships between Works, Expressions, Manifestations, & Items
- + Section 9: Recording Relationships between Agents
- + Section 10: Recording Relationships between Concepts, Objects, Events, & Places

+ Appendices

+ Glossary

RDA TOOLKIT
RESOURCE DESCRIPTION & ACCESS

Explore the [RDA Toolkit BETA site](#)

RDA **TOOLS** **RESOURCES**

RDA TABLE OF CONTENTS

- RDA
 - RDA Table of Contents
 - + 0: Introduction
 - Section 1: Recording Attributes of Manifestation & Item
 - + 1: General Guidelines on Recording Attributes of Manifestations and Items
 - + 2: Identifying Manifestations and Items
 - + 3: Describing Carriers
 - + 4: Providing Acquisition and Access Information
 - Section 2: Recording Attributes of Work & Expression
 - + 5: General Guidelines on Recording Attributes of Works and Expressions
 - + 6: Identifying Works and Expressions
 - + 7: Describing Content
 - Section 3: Recording Attributes of Agents
 - + 8: General Guidelines on Recording Attributes of Agents
 - + 9: Identifying Persons
 - + 10: Identifying Families
 - + 11: Identifying Corporate Bodies
 - Section 4: Recording Attributes of Concept, Object, Event & Place
 - + 12: General Guidelines on Recording Attributes of Concepts, Objects, Events, and Places
 - + 13: Identifying Concepts
 - + 14: Identifying Objects
 - + 15: Identifying Events
 - + 16: Identifying Places
 - + Section 5: Recording Primary Relationships Between Work, Expression, Manifestation, & Item
 - + Section 6: Recording Relationships to Agents
 - + Section 7: Recording Relationships to Concepts, Objects, Events, & Places
 - + Section 8: Recording Relationships between Works, Expressions, Manifestations, & Items
 - + Section 9: Recording Relationships between Agents
 - + Section 10: Recording Relationships between Concepts, Objects, Events, & Places
 - + Appendices

0: Introduction [RDA](#)

- 0.0: Purpose and Scope [RDA](#)
- 0.1: Key Features [RDA](#)
- 0.2: Conceptual Models Underlying RDA [RDA](#)
- 0.3: Relationship to Other Standards for Resource Description and Access [RDA](#)
- 0.4: Objectives and Principles Governing Resource Description and Access [RDA](#)
- 0.5: Structure [RDA](#)
- 0.6: RDA Elements [RDA](#)
- 0.7: Access Points [RDA](#)
- 0.8: Alternatives and Options [RDA](#)
- 0.9: Exceptions [RDA](#)
- 0.10: Examples [RDA](#)
- 0.11: Internationalization [RDA](#)
- 0.12: Encoding RDA Data [RDA](#)

Section 1: Recording Attributes of Manifestation and Item

1: General Guidelines on Recording Attributes of Manifestations and Items [RDA](#)

- 1.0: Scope [RDA](#)
- 1.1: Terminology [RDA](#)
- 1.2: Functional Objectives and Principles [RDA](#)
- 1.3: Core Elements [RDA](#)
- 1.4: Language and Script [RDA](#)
- 1.5: Type of Description [RDA](#)
- 1.6: Changes Requiring a New Description [RDA](#)
- 1.7: Transcription [RDA](#)
- 1.8: Numbers Expressed as Numerals or as Words [RDA](#)
- 1.9: Dates [RDA](#)
- 1.10: Notes [RDA](#)

RDA rules (for any type of information objects)

**Descriptive
cataloging:
container &
content**

RDA
RESOURCE DESCRIPTION & ACCESS

RDA TOOLS RESOURCES

- RDA

RDA Table of Contents

+ 0: Introduction

- Section 1: Recording Attributes of Manifestation & Item

+ 1: General Guidelines on Recording Attributes of Manifestations and Items

+ 2: Identifying Manifestations and Items

+ 3: Describing Carriers

+ 4: Providing Acquisition and Access Information

- Section 2: Recording Attributes of Work & Expression

+ 5: General Guidelines on Recording Attributes of Works and Expressions

+ 6: Identifying Works and Expressions

+ 7: Describing Content

- Section 3: Recording Attributes of Agents

+ 8: General Guidelines on Recording Attributes of Agents

+ 9: Identifying Persons

+ 10: Identifying Families

+ 11: Identifying Corporate Bodies

+ Section 4: Recording Attributes of Concept, Object, Event & Place

+ Section 5: Recording Primary Relationships Between Work, Expression, Manifestation, & Item

+ Section 6: Recording Relationships to Agents

+ Section 7: Recording Relationships to Concepts, Objects, Events, & Places

+ Section 8: Recording Relationships between Works, Expressions, Manifestations, & Items

+ Section 9: Recording Relationships between Agents

+ Section 10: Recording Relationships between Concepts, Objects, Events, & Places

**Subject
cataloging**

RDA TOOLKIT
RESOURCE DESCRIPTION & ACCESS

RDA TOOLS RESOURCES

- RDA

RDA Table of Contents

+ 0: Introduction

+ Section 1: Recording Attributes of Manifestation & Item

+ Section 2: Recording Attributes of Work & Expression

+ Section 3: Recording Attributes of Agents

- Section 4: Recording Attributes of Concept, Object, Event & Place

+ 12: General Guidelines on Recording Attributes of Concepts, Objects, Events, & Places

+ 13: Identifying Concepts

+ 14: Identifying Objects

+ 15: Identifying Events

+ 16: Identifying Places

- Section 5: Recording Primary Relationships Between Work, Expression, Manifestation, & Item

+ 17: General Guidelines on Recording Relationships Between Works, Expressions, Manifestations, & Items

- Section 6: Recording Relationships to Agents

+ 18: General Guidelines on Recording Relationships to Agents Associated with a Work, Expression, Manifestation, or Item

+ 19: Agents Associated with a Work

+ 20: Agents Associated with an Expression

+ 21: Agents Associated with a Manifestation

+ 22: Agents Associated with an Item

**Descriptive
cataloging:
agents**

**Title
authority
control
(e.g., series)**

RDA TOOLKIT
RESOURCE DESCRIPTION & ACCESS

RDA TOOLS RESOURCES

- RDA

RDA Table of Contents

+ 0: Introduction

+ Section 1: Recording Attributes of Manifestation & Item

+ Section 2: Recording Attributes of Work & Expression

+ Section 3: Recording Attributes of Agents

+ Section 4: Recording Attributes of Concept, Object, Event & Place

+ Section 5: Recording Primary Relationships Between Work, Expression, Manifestation, & Item

+ Section 6: Recording Relationships to Agents

+ Section 7: Recording Relationships to Concepts, Objects, Events, & Places

+ 23: General Guidelines on Recording Relationships Between Works and Subjects

- Section 8: Recording Relationships between Works, Expressions, Manifestations, & Items

+ 24: General Guidelines on Recording Relationships between Works, Expressions, Manifestations, and Items

+ 25: Related Works

+ 26: Related Expressions

+ 27: Related Manifestations

+ 28: Related Items

- Section 9: Recording Relationships between Agents

+ 29: General Guidelines on Recording Relationships Between Agents

+ 30: Related Persons

+ 31: Related Families

+ 32: Related Corporate Bodies

- Section 10: Recording Relationships between Concepts, Objects, Events, & Places

+ 33: General Guidelines on Recording Relationships between Concepts, Objects, Events, & Places

+ 34: Related Concepts

+ 35: Related Objects

+ 36: Related Events

+ 37: Related Places

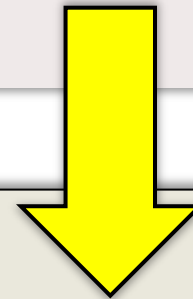
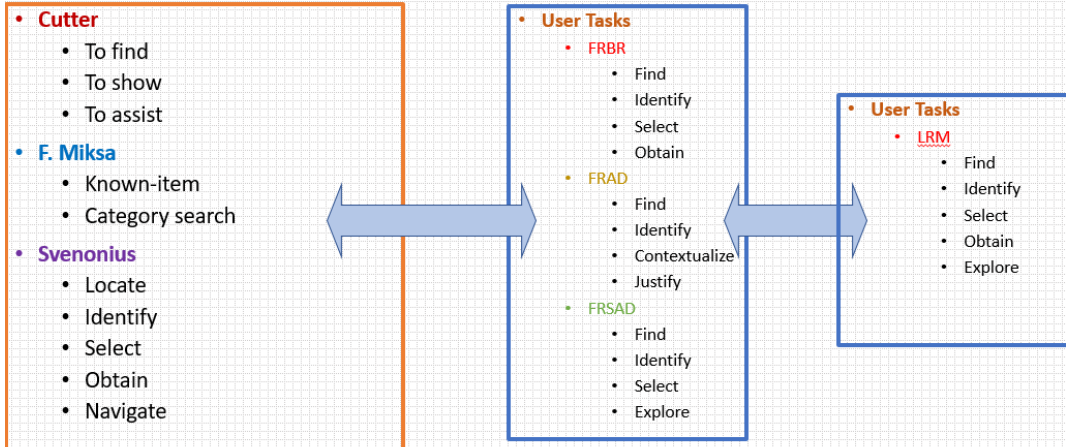
The four main cataloger tasks



- Section 1: Recording Attributes of Manifestation & Item

- + 1: General Guidelines on Recording Attributes of Manifestations and Items
- + 2: Identifying Manifestations and Items
- + 3: Describing Carriers
- + 4: Providing Acquisition and Access Information

Catalog Objectives ↔ User Tasks



RECORDING
IDENTIFYING
DESCRIBING
PROVIDING

Moving further in....

Attributes **of**
Group 1
entities

Recording attributes **of**
things and relationships
to or **between** things

Relationships
between
entities from
Group 1 or 2

Relationships **to**
Group 2 entities

Attributes

- + n: Introduction
- + Section 1: Recording Attributes of Manifestation & Item
- + Section 2: Recording Attributes of Work & Expression
- + Section 3: Recording Attributes of Person, Family, & Corporate Body
- + Section 4: Recording Attributes of Concept, Object, Event & Place
- + Section 5: Recording Primary Relationships Between Work, Expression, Manifestation & Item
- + Section 6: Recording Relationships to Persons, Families, & Corporate Bodies
- + Section 7: Recording Relationships to Concepts, Objects, Events, & Places
- + Section 8: Recording Relationships between Works, Expressions, Manifestations, & Items
- + Section 9: Recording Relationships between Persons, Families, & Corporate Bodies
- + Section 10: Recording Relationships between Concepts, Objects, Events, & Places
- Appendices

Guides the creation of cataloging rules such as RDA

International principles and standards (ICP) from IFLA

Foundational documents

Library Reference Model (LRM) from IFLA

Replaces FRBR, FRAD, FRSAD

Bibliographic Control
using Resource Description and Access (RDA)

Subject Cataloging
(content attributes, etc.)

subject analysis and representation

Classification access points

LCC, DDC, UDC, etc.

Classification Systems

utilizing

Subject Access points

RDA, Section 7

FRSAD

Controlled Vocabularies, Natural language (e.g., social tagging, etc.)

Combined process of creating subject and descriptive data...

Catalog R...

...and then encoding the data

Descriptive Cataloging
(Carrier attributes, etc.)

RDA, Sections 2-6, 8-10
Identifying WEMI attributes, AP's, and relationships among them

Authority Control

FRAD

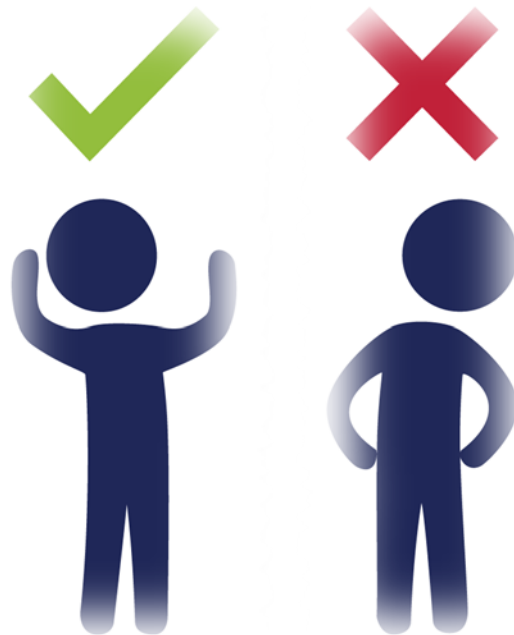
Access points chosen for bib description; corresponding authority records are verified or established in authority records

The overall library catalog is composed of multiple databases each contributing a vital function for the organization, control, and retrieval of information resources...

Production of Library (bibliographic, authority, spe...

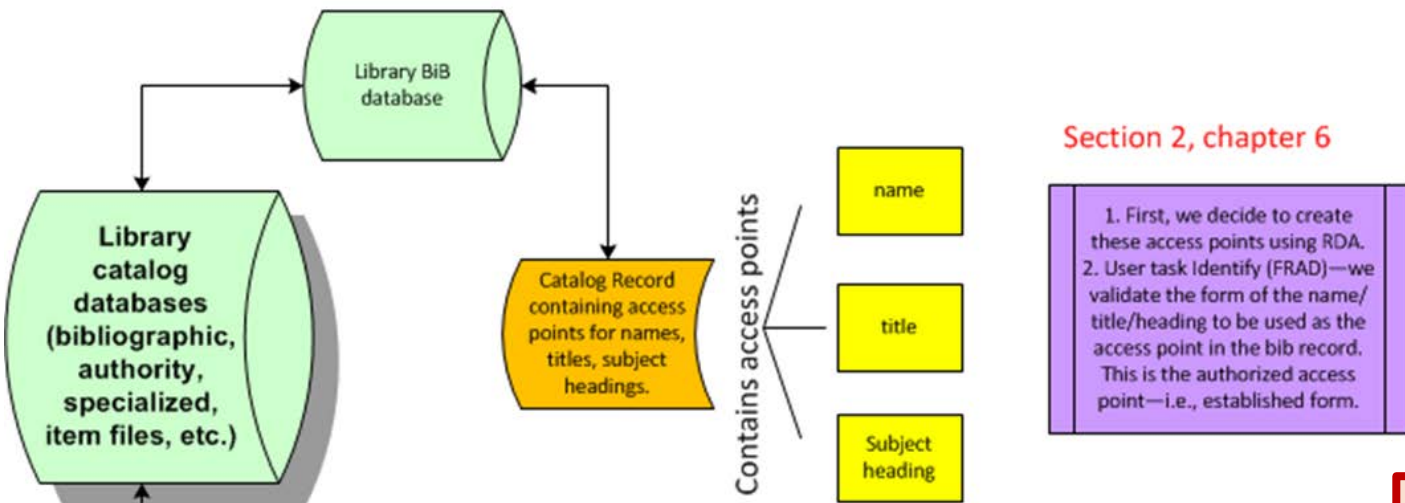
Access Poses Two Questions Regarding Choice:

- Who is intellectually responsible for this information resources?
- How is the information resource known?



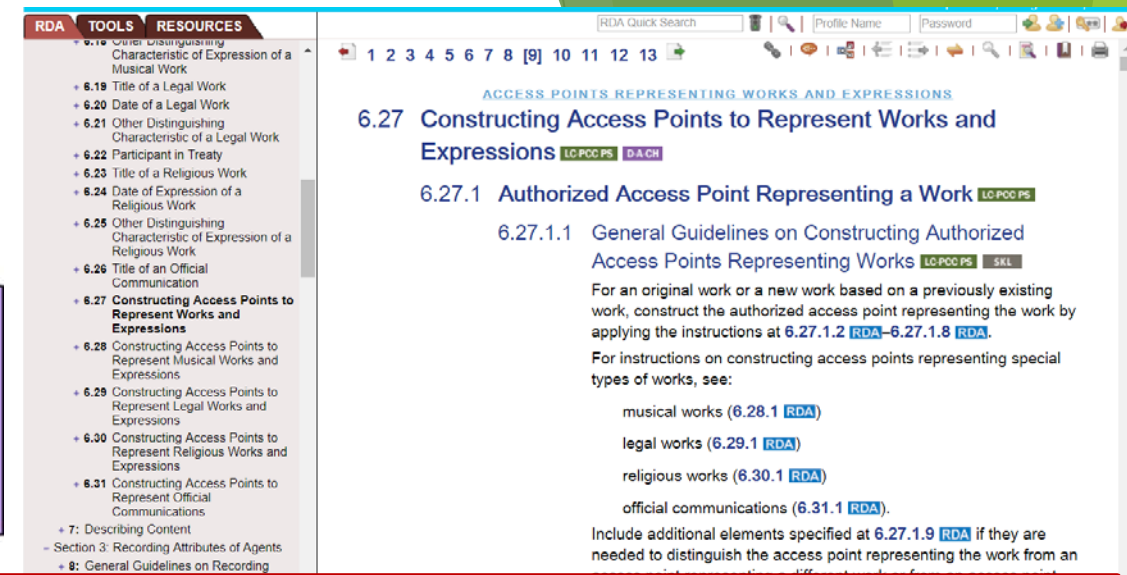
Access in
Cataloging

Access points and Authority Control



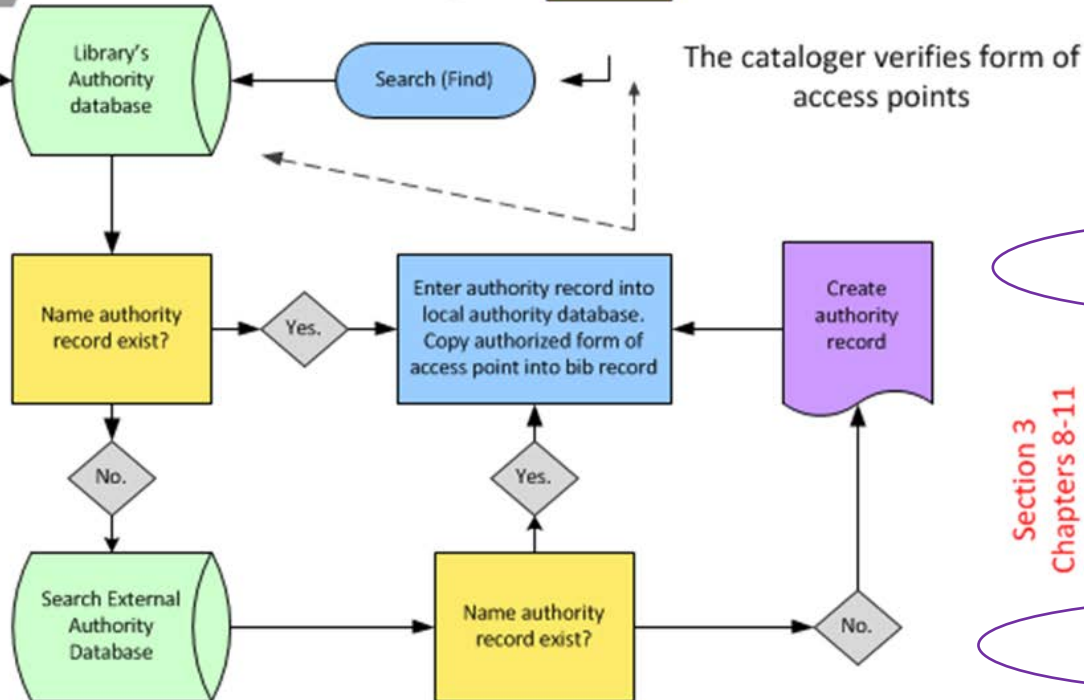
Section 2, chapter 6

1. First, we decide to create these access points using RDA.
2. User task Identify (FRAD)—we validate the form of the name/title/heading to be used as the access point in the bib record. This is the authorized access point—i.e., established form.

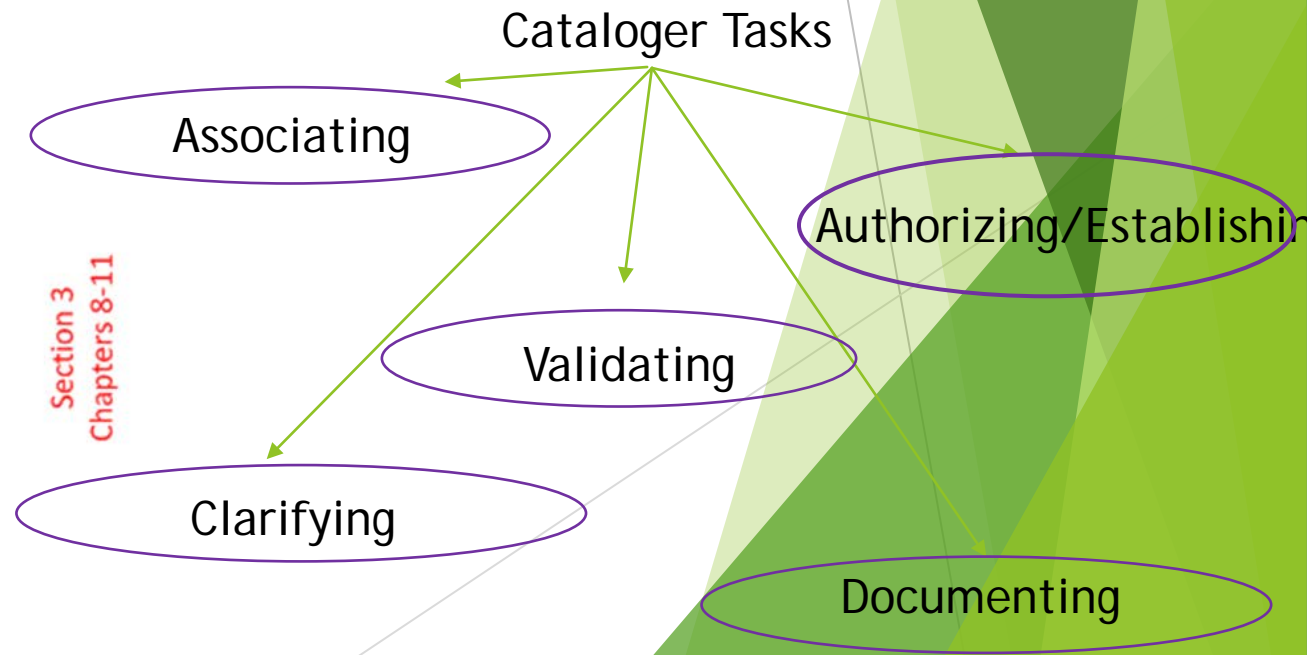


Governing and Normalizing data

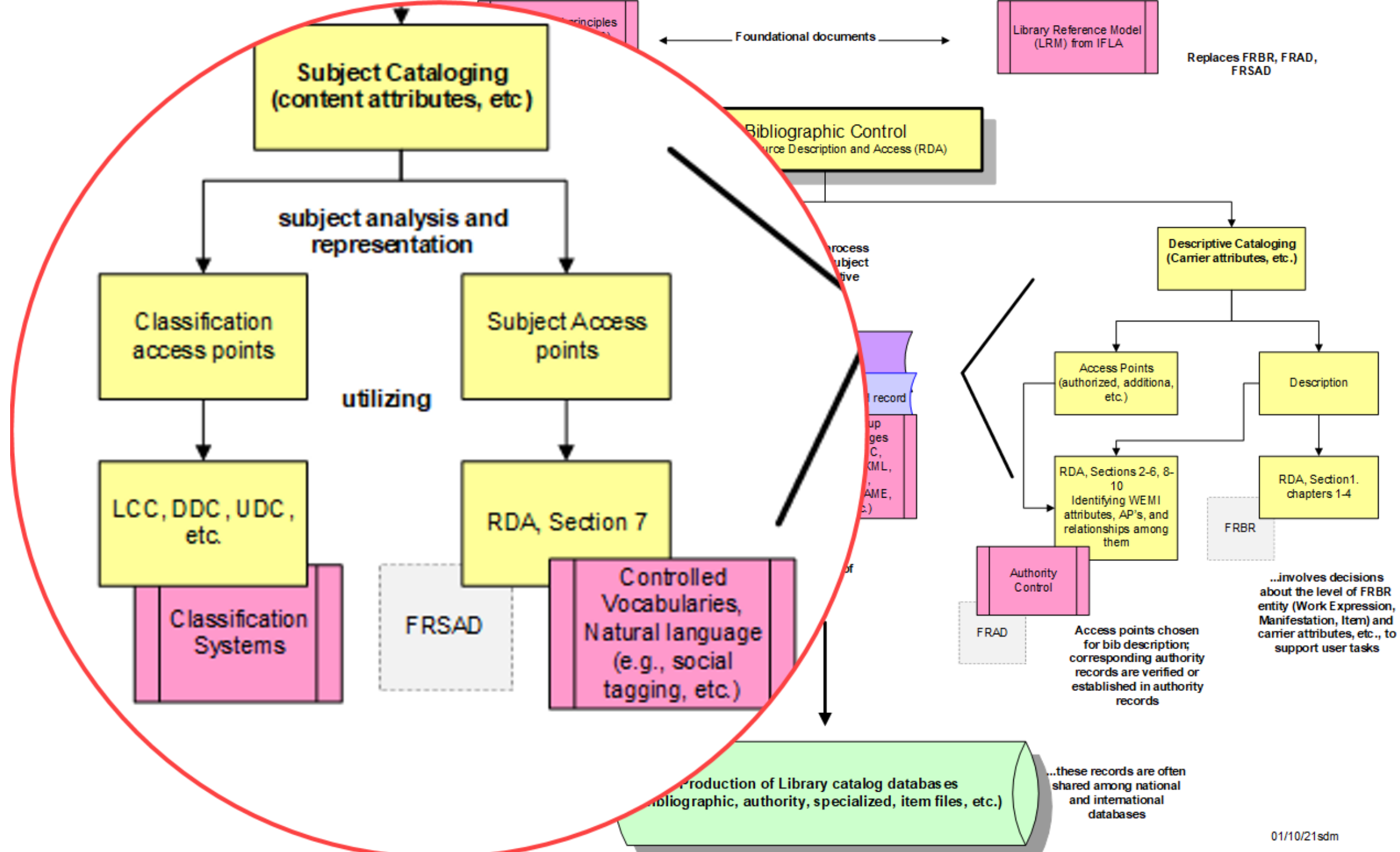
Authority work



Section 6
Chapters 18-22



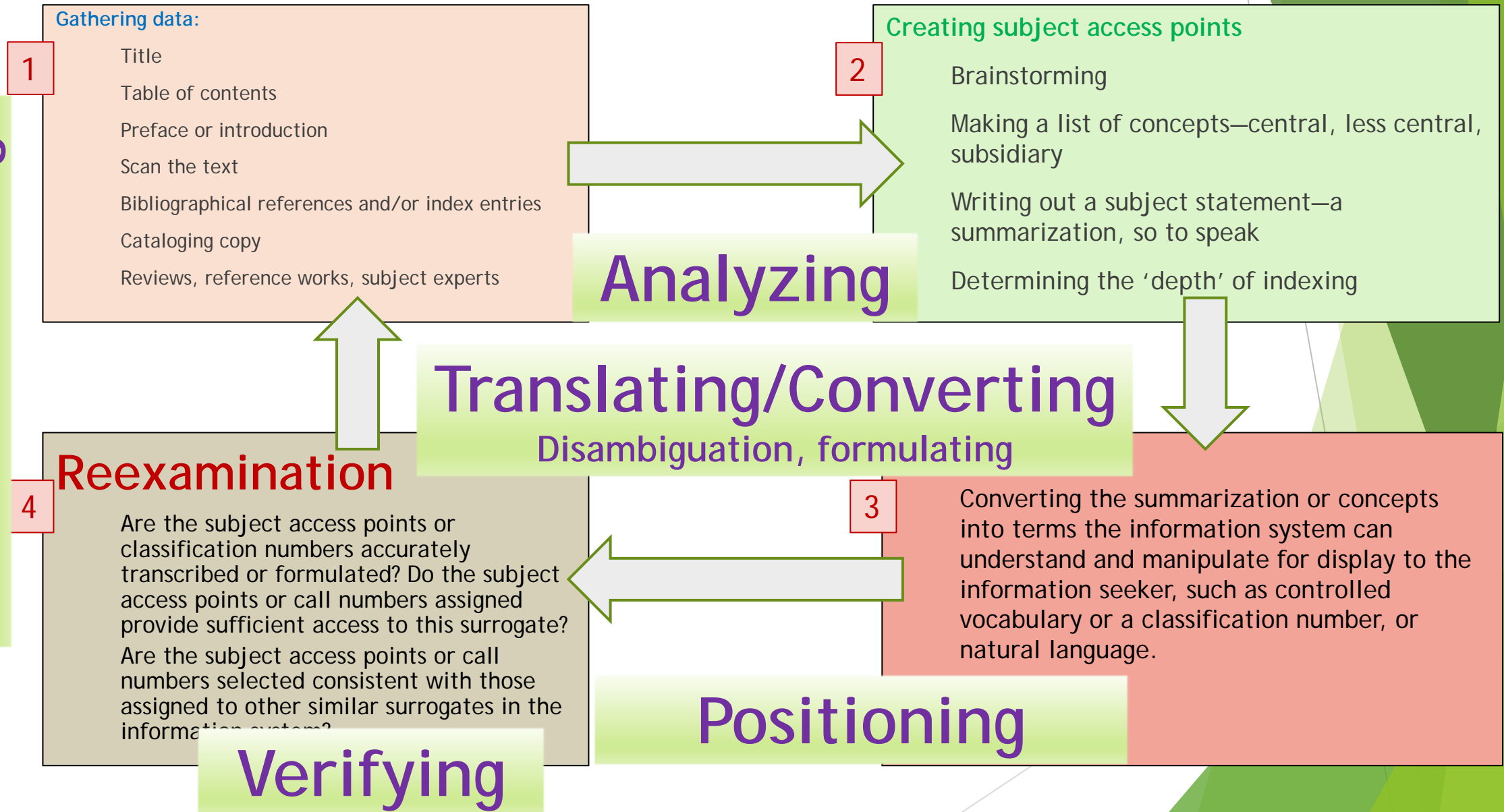
Section 3
Chapters 8-11

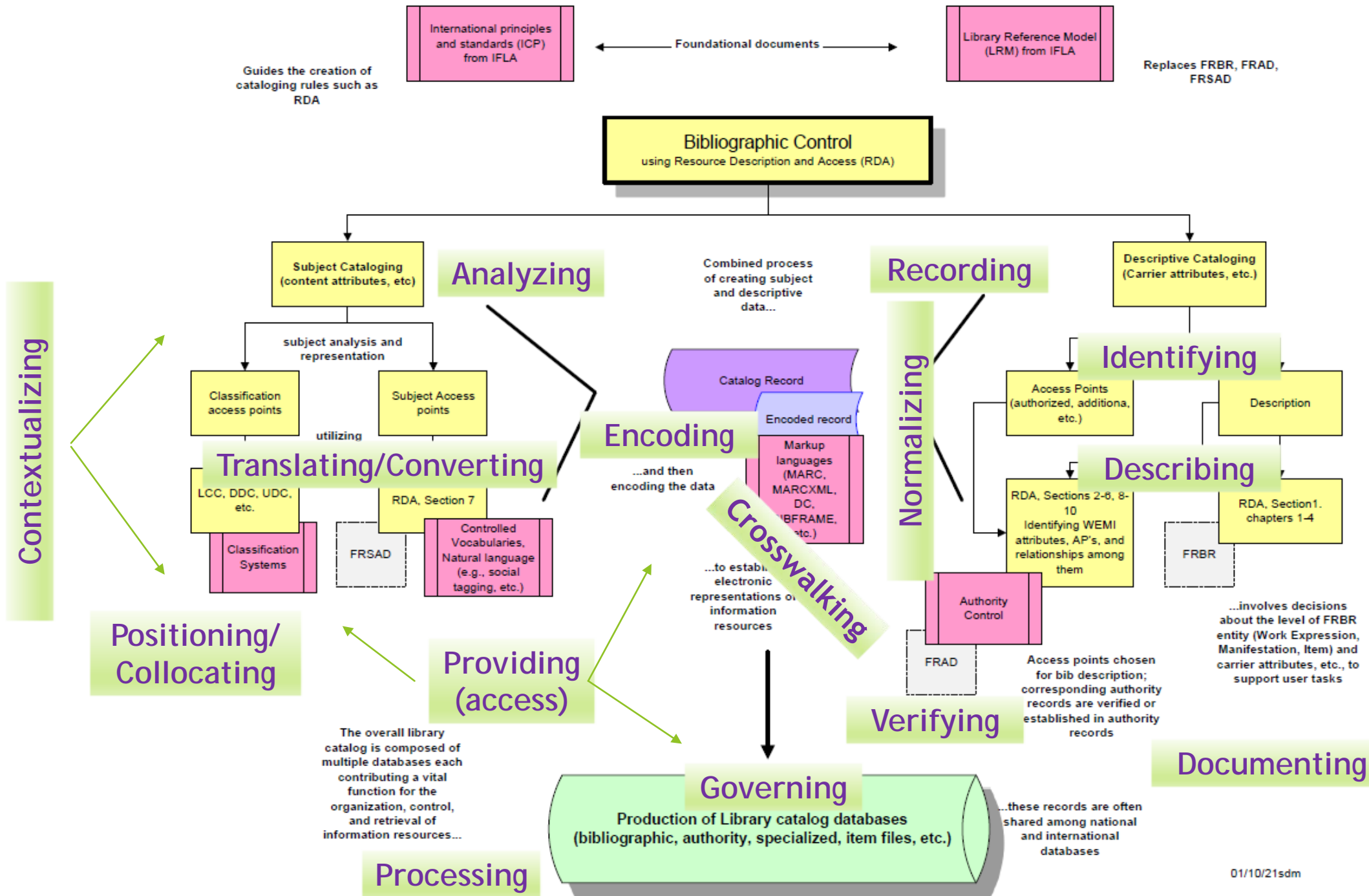


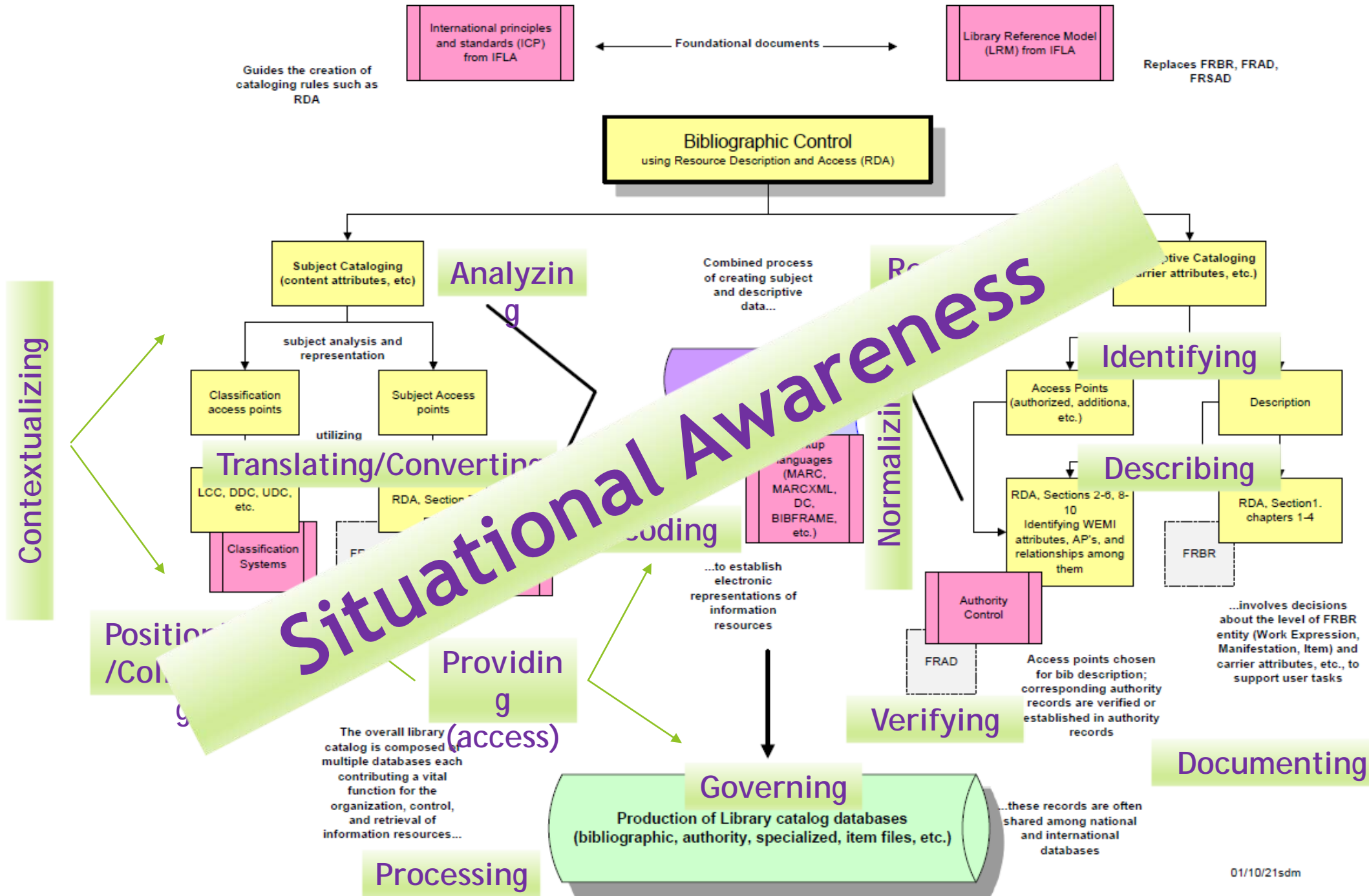
Subject Analysis in practice—Contextualizing, Clarifying, Positioning, etc.

Contextualizing

Clarifying







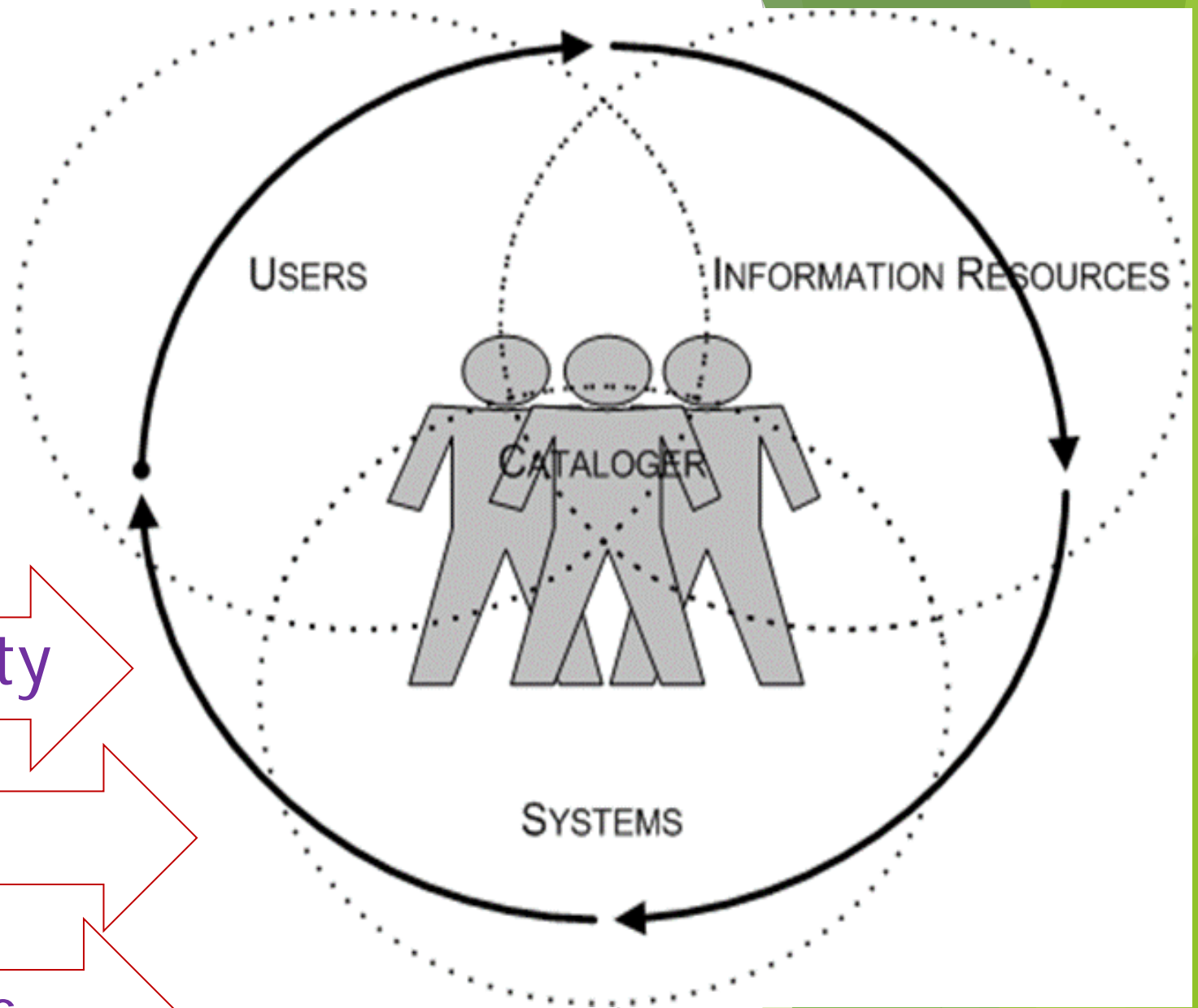
Cataloger's situational awareness

Competencies

Diversity, Equity, Inclusivity

Quality, ethics

Trends, new developments



What is the purpose of studying cataloger tasks?

- ▶ At the very least it provides an overview of cataloging work and gives student librarians/information professionals a structure in which to learn how to organize information in a logical manner for any number of information retrieval systems or, in the case of library administrators, a way to clearly understand the importance of cataloging work to the library.
- ▶ At the most, it gives catalogers food for thought as to how and why their work is important to the daily functioning of their library and how their library fits within the larger arena of interconnected library systems on a national and global level.

Thank you!

Shawne.Miksa@unt.edu

<https://smiksa.ci.unt.edu/>