

Everything You Wanted to Know About “Linky MARC”*

*And Were Definitely *Not* Afraid to Ask, Being Librarians

Abby Dover

Linked Data Librarian
Northwestern University

MARC to Linked Data: More Possibilities - Pt. 2 of
MARC Formats Transition IG session, March 15, 2024

What is “linky MARC”?

- Linky MARC = MARC records that contain http URIs (Uniform Resource Identifiers) for entities
- Coined by Richard Wallis
- Uses the \$0 and \$1 subfields – not to be confused with URLs in \$u

This is linky MARC:

380 ## \$a Novels \$2 lcgt \$0 <http://id.loc.gov/authorities/genreForms/gf2015026020>
\$1 <http://www.wikidata.org/entity/Q8261>

Not this:

856 42 \$3 Essays from annual reports \$u <http://woodrow.mpls.frb.fed.us/pubs/ar/index.html>

What is linky MARC for?

Linky MARC is *not* linked data. Rather, it's a (temporary) bridge – a hybrid form meant as an interim solution until we can fully transition to linked data-land.

Linky MARC can...

- Help with headings maintenance
- Prepare for conversion to RDF/BIBFRAME
- Bring external data into the discovery environment



What's the difference between \$0 and \$1?

\$0 = Authority record control number or standard number

- Authorities are **documents describing a thing, not the thing itself**
 - Has a preferred label
 - Contains metadata about the heading, such as provenance, revision history, etc.
- Can be expressed either as a control number (n 80017868) or URI (<http://id.loc.gov/authorities/names/n80017868>)
- Sources tend to be published by or endorsed by library standards organizations
- Mix of legacy and linked data encodings

Examples of sources that use \$0:

LCSH

LCGFT

LCDGT

LCNAF published as authorities (URIs styled like:

<http://id.loc.gov/authorities/names/n50024879>)

AAT - Art & Architecture Thesaurus

RBMS Controlled Vocabularies

MeSH (Medical Subject Headings) RDF

What's the difference between \$0 and \$1?

\$1 = Real World Object URI

- A Real World Object is **the thing that an authority describes**
- Are generally label-agnostic
- Specialized for linked data applications and formulated according to linked data conventions
 - globally unique
 - persistent
 - resolves to RDF-encoded description
- Source could be from the library community or third-party
- Approved for use after \$0

Examples of sources that use \$1:

Homosaurus

VIAF

Wikidata

ORCID

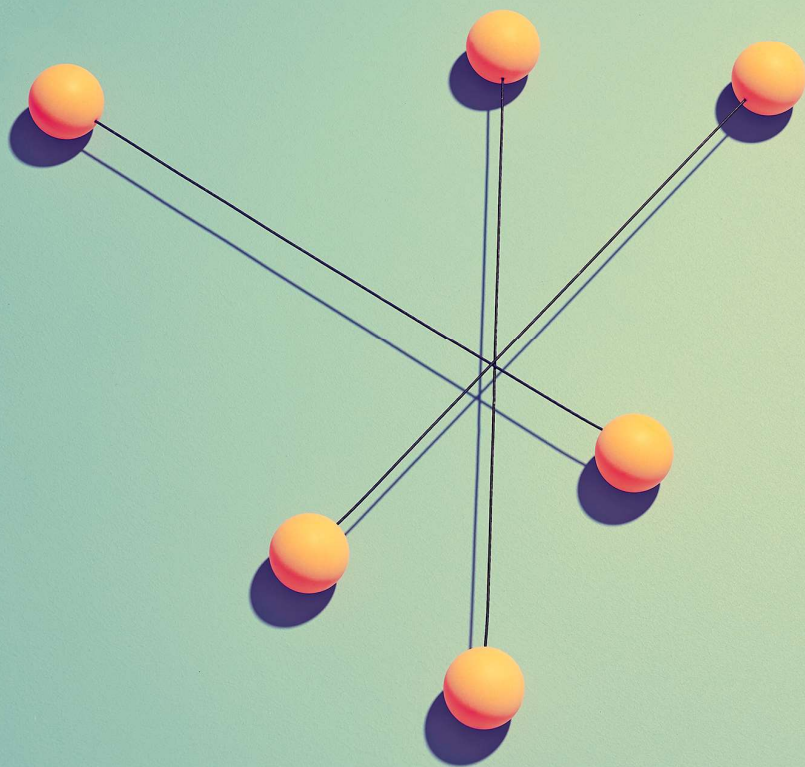
ISNI

GeoNames

WorldCat Entities

LCNAF published as Real World Objects (URIs styled like:

<http://id.loc.gov/rwo/agents/n50024879>)



What are some guidelines for using linky MARC?

Three key reference documents (even if you're not a PCC library):

- PCC Task Group on Linked Data Best Practices Final Report (2019)
- URI FAQ (2018, revised 2023)
- Formulating and Obtaining URIs Guide (2020)

What are some guidelines for using linky MARC?

Best practices:

- NACO authority records are not meant as hubs or URI reconciliation services, so it is not required to add URIs in the 024 field (But if you do, keep to 5 or less and only add if providing additional info)
- URIs should not be given for portions of access points – must refer to the *entire* string
- No limit to the number of URIs strictly speaking, but in practice, keep to one \$0 and/or one \$1
- Should limit the number of sources to 1 or 2 – mapping equivalencies across vocabularies should not be done at the bib record level. Using external “hubs” like Wikidata is an option.
- Formulating a URI isn’t a matter of just copy-pasting the URL – consult a guide, don’t try to wing it

Where can I get some extra help?

Tools

- Vapour (linked data validator)
<http://linkeddata.uriburner.com:8000/vapour>
- Vafu <http://vafu.redlink.io/>
- MARCEdit MARCNext
- LOD/OpenRefine
- Custom SPARQL scripts
- Gary Strawn's Authority Toolkit: newer versions have URI functionality

Vendors

- MARCIVE, Backstage, and other library vendors have services that will add URIs to MARC records



Why have I been seeing so many more URIs in WorldCat lately?



- As of December 2023, OCLC started adding WorldCat Entities URIs for persons, places, and events to the 100, 600, 647, 651, 700 or 758* fields, and expanded to URIs for Works in late January 2024.
- There's currently an "Insert WorldCat Entity" feature in Record Manager; Connexion will receive this functionality later this year.
- Why WorldCat Entities and not a "hub" like Wikidata? – WorldCat Entities is associated with your libraries' actual holdings.
- Note that in fields that can be controlled by OCLC Connexion software (1XX, 6XX, 7XX, 8XX), \$0s are removed when the field is controlled. However, \$1 is retained. So – to control or not to control?

*the 758 (Resource Identifier) is a (relatively) new MARC field that records an identifier (typically a URI) for either the resource described in the bib record, or a resource to which it is related (with relationship info in the \$i)



What should I consider before jumping in?

- To what extent does your ILS/LMS accept URIs in MARC records? Do they impact display or the indexing of headings?
- Since multiple URIs are not encouraged, what sources are best to use?
- How do you maintain quality control?
- What about pre-coordinated strings, such as LCSH?
- Do you need to be doing all this *right now*, or can you wait?

References consulted

Chew Chiat Naun (2020) Expanding the Use of Linked Data Value Vocabularies in PCC Cataloging, Cataloging & Classification Quarterly, 58:3-4, 449-457, DOI: [10.1080/01639374.2019.1705953](https://doi.org/10.1080/01639374.2019.1705953)

PCC URIs in MARC Pilot NACO subgroup (2020) 024 Best Practices Guidelines
<https://www.loc.gov/aba/pcc/naco/documents/NACO-024-Best-Practices.pdf>

PCC Task Group on Linked Data (2019) Best Practices Final Report <https://www.loc.gov/aba/pcc/taskgroup/linked-data-best-practices-final-report.pdf>

PCC Task Group on URIs in MARC (2020) Formulating and Obtaining URIs: A Guide to Commonly Used Vocabularies and Reference Sources. https://www.loc.gov/aba/pcc/bibframe/TaskGroups/formulate_obtain_URI_guide.pdf

PCC Task Group on URIs in MARC (2018, revised 2023) URI FAQs
<https://www.loc.gov/aba/pcc/bibframe/TaskGroups/URI%20FAQs.pdf>

PCC URIs in MARC Pilot (2021) Resource Documents & Tools <https://wiki.lyrasis.org/pages/viewpage.action?pageId=178881300>

Philip E. Schreur & Amy J. Carlson (2020) Bridging the Worlds of MARC and Linked Data: Transition, Transformation, Accountability, The Serials Librarian, 78:1-4, 48-56, DOI: [10.1080/0361526X.2020.1716584](https://doi.org/10.1080/0361526X.2020.1716584)

Wallis, Richard (2018) MARC and Beyond: Our Three Linked Data Choices. Paper presented at: [IFLA WLIC 2018 – Kuala Lumpur, Malaysia – Transform Libraries, Transform Societies](https://library.ifla.org/id/eprint/2124) in Session 113 - Information Technology. <https://library.ifla.org/id/eprint/2124>

Thank you!



QUESTIONS, THOUGHTS,
COMMISERATIONS?



CONTACT ME AT
ABBY.DOVER@NORTHWESTERN.EDU