

# Region V

## Section Boundary Analysis

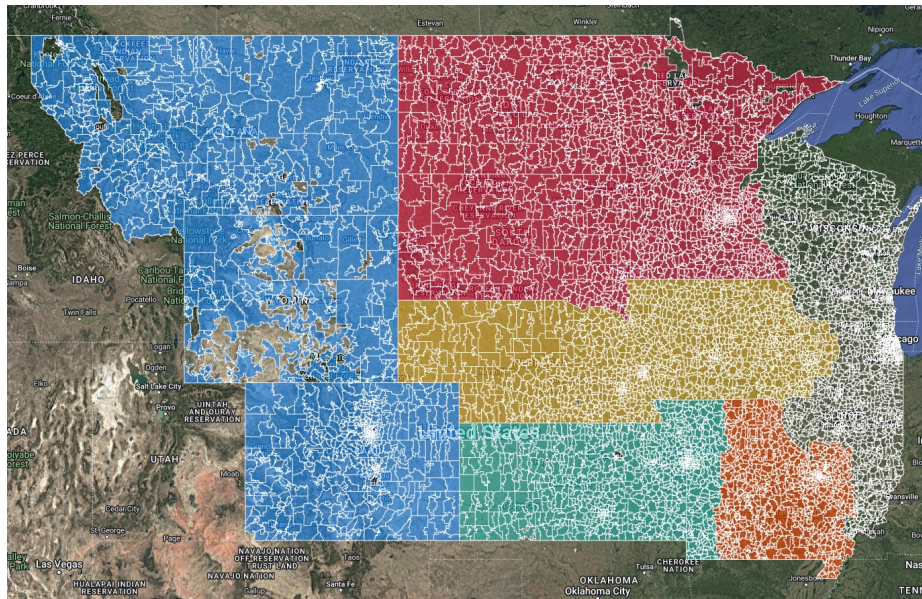
Ryan Sherrill  
May 5th, 2025

# Purpose of Analysis

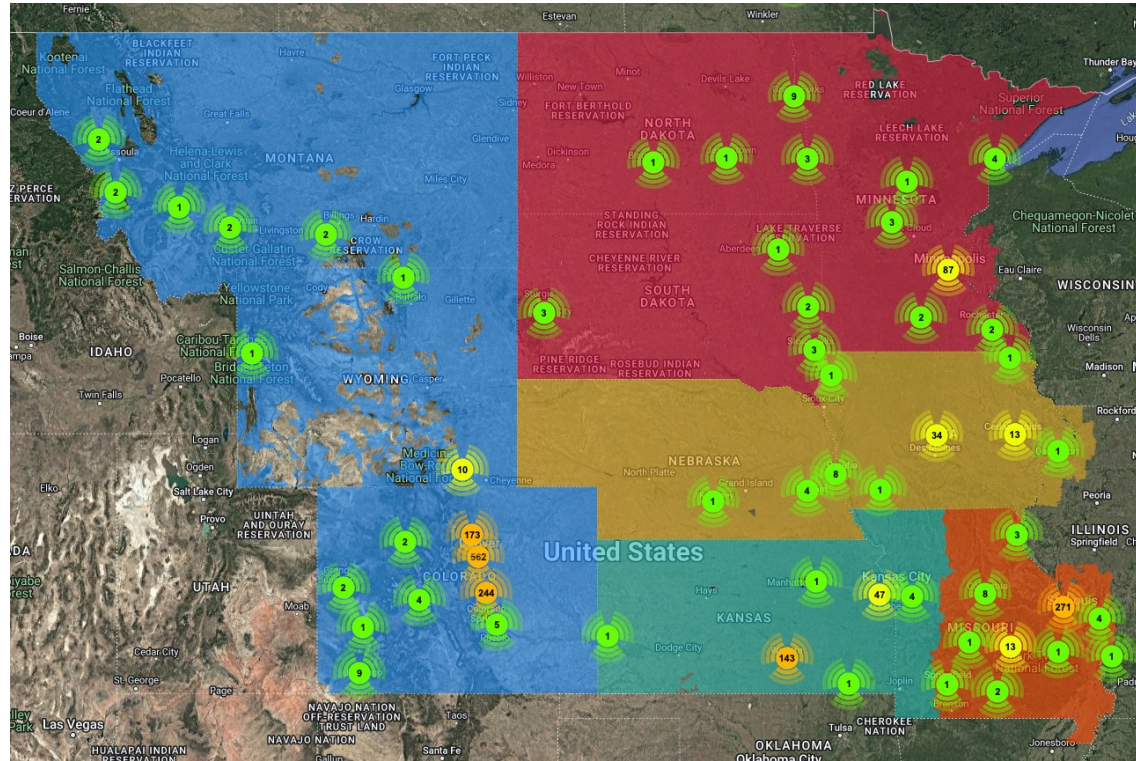
- READ is conducting a data-driven review of section boundaries across all regions and examining if the current boundaries make sense
  - Most section boundaries were established approximately 60 years ago based on industry and membership distribution at that time
  - Very little change has occurred since the boundaries were established and they may not reflect current industry and membership numbers
- To aid in this analysis, READ purchased a one-year license of a commercial mapping software.
- AIAA is concerned about long-term membership numbers, and one of the ways to combat this trend is to ensure quality programming at the section level.
- These maps represent the start of conversation across READ

# Section Boundaries

- Section boundaries are specified in the Section bylaws using counties. However, AIAA uses zip codes to assign members to individual sections.
- Any gaps or holes in the maps represent areas where zip codes have not been assigned
  - Native American Reservations
  - Military bases, ranges, and other federal land
  - State and federal parks, forests, and wildlife preserves
  - Large lakes and reservoirs

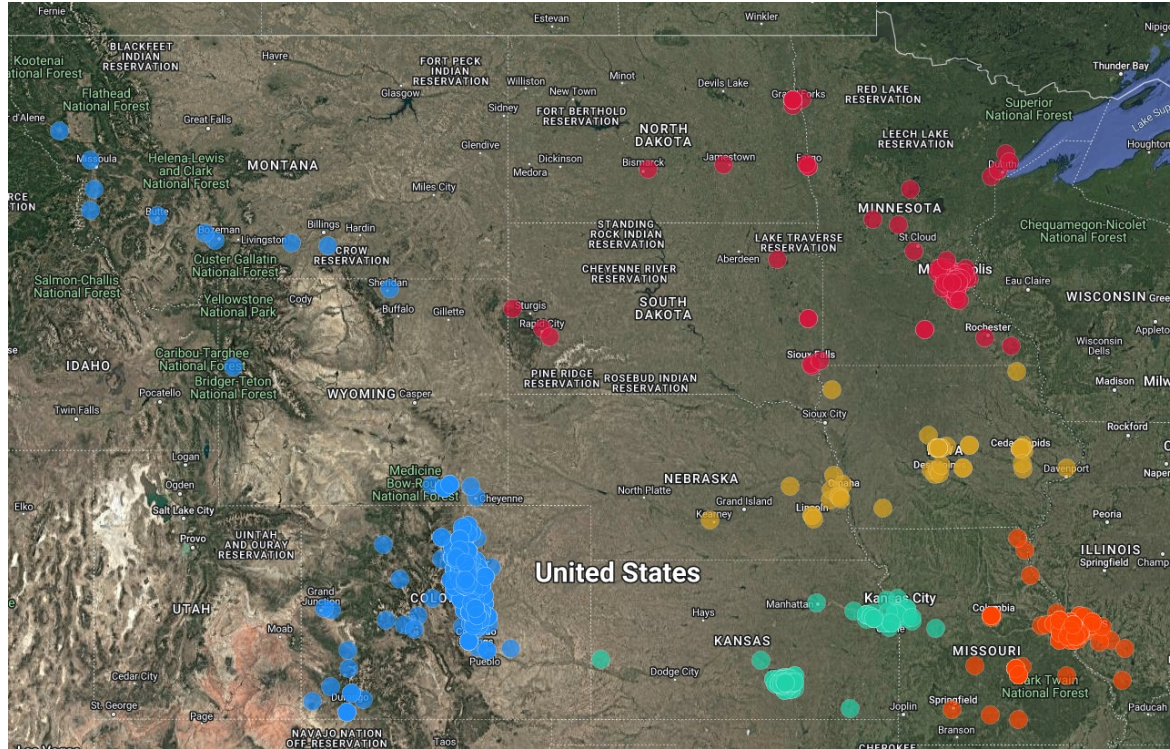


# Region V Membership Distribution

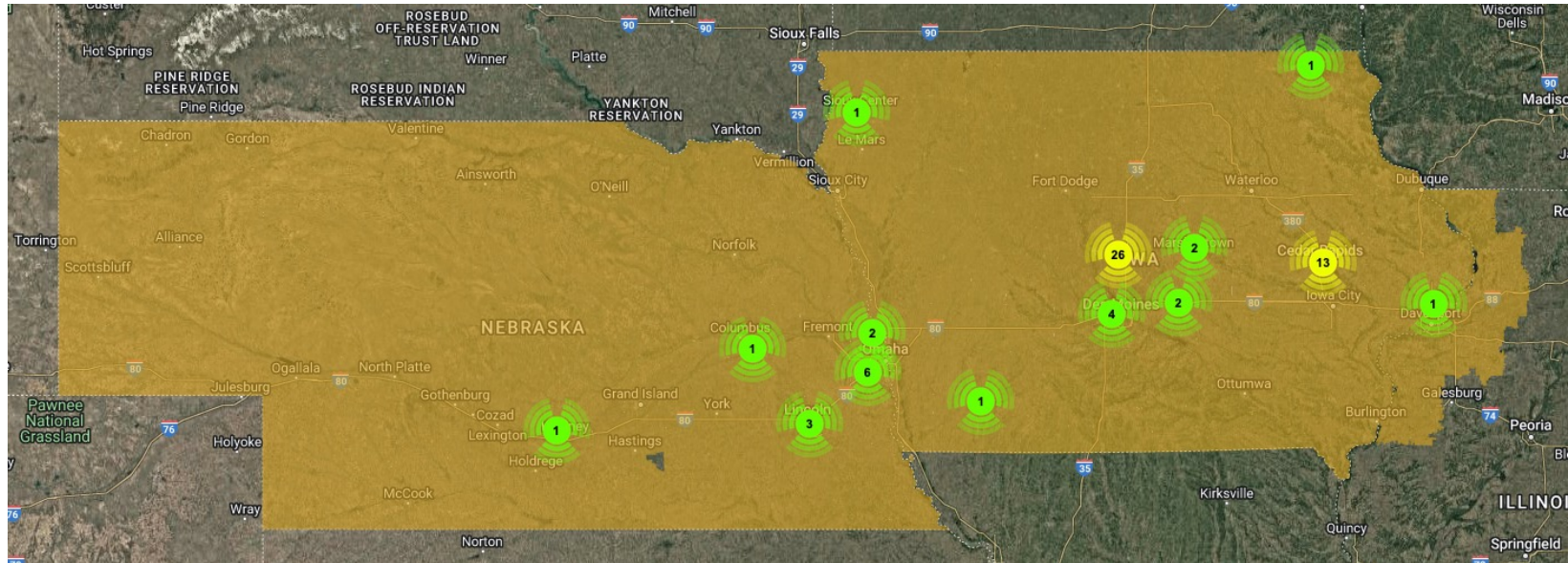




# Region V Membership Distribution

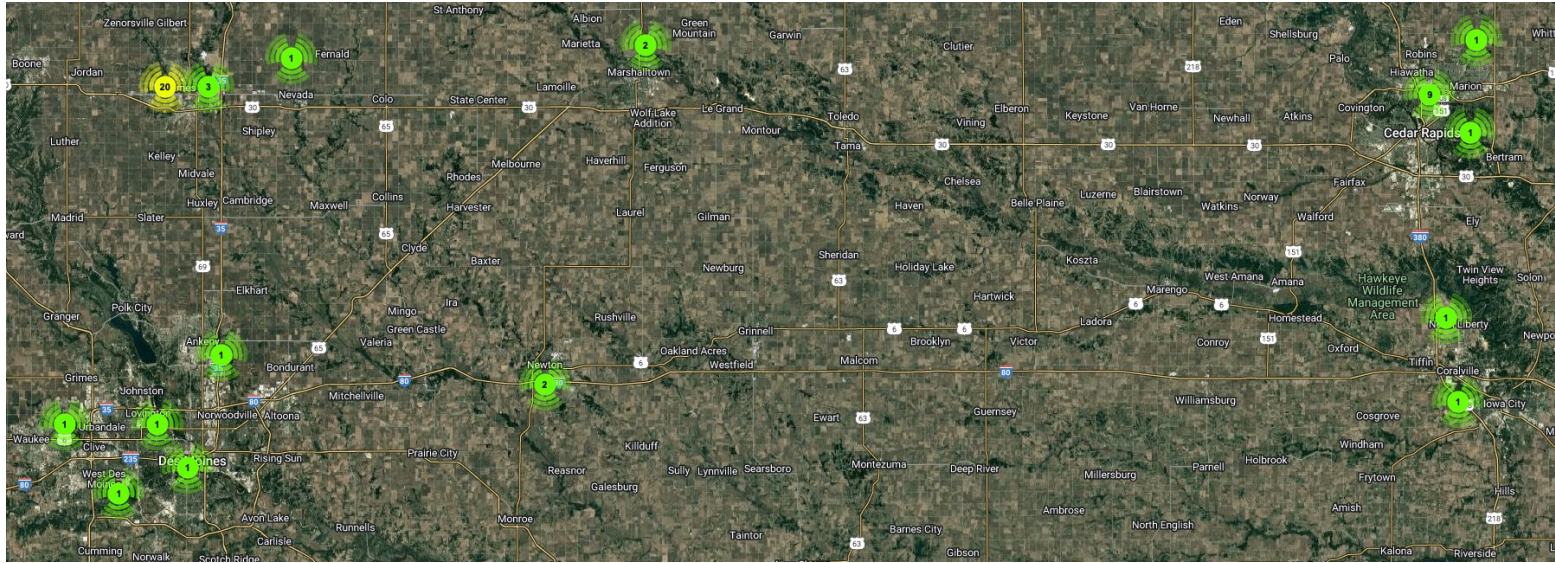


# Iowa

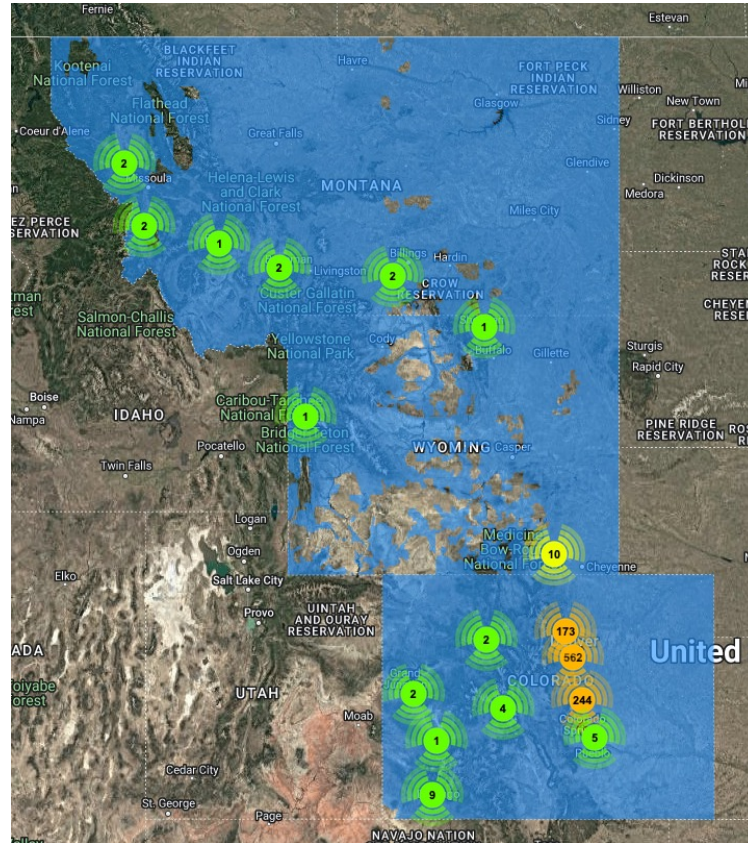




# Iowa

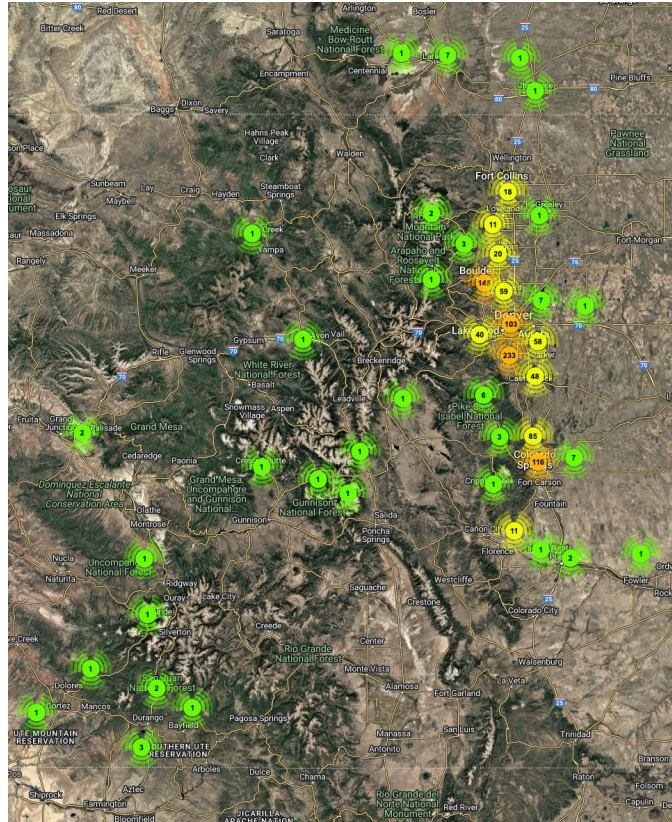


# Rocky Mountain



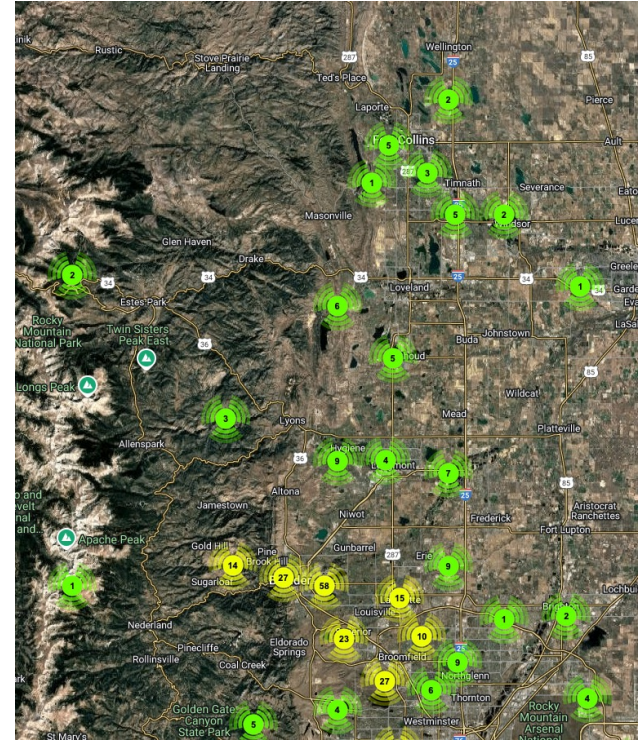
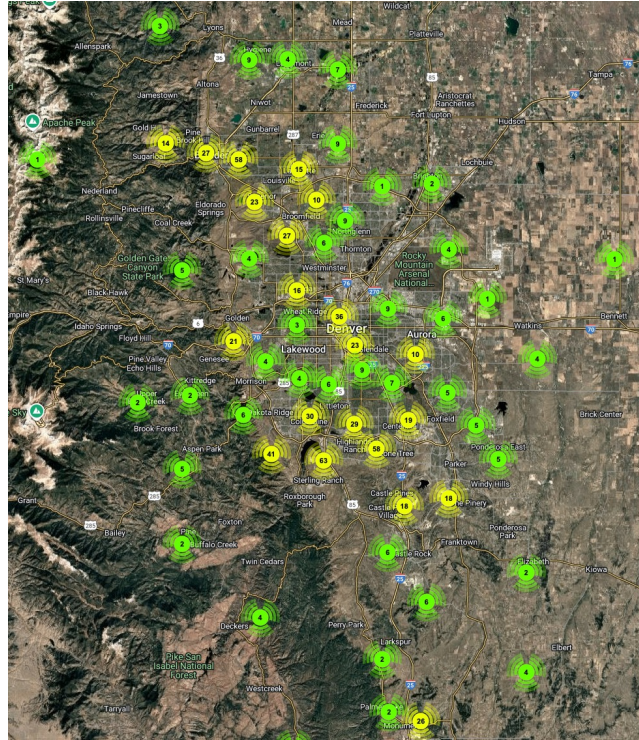
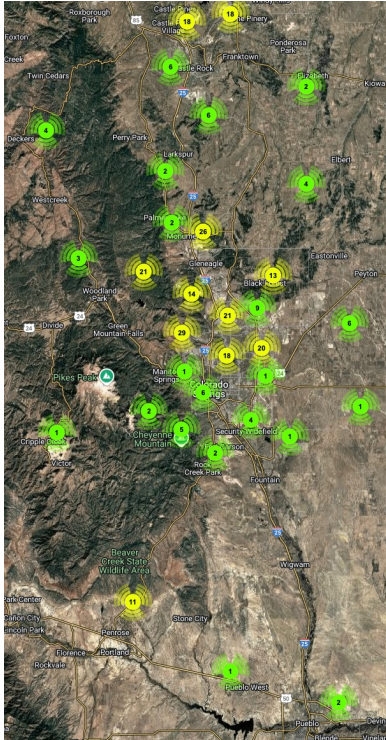


# Rocky Mountain



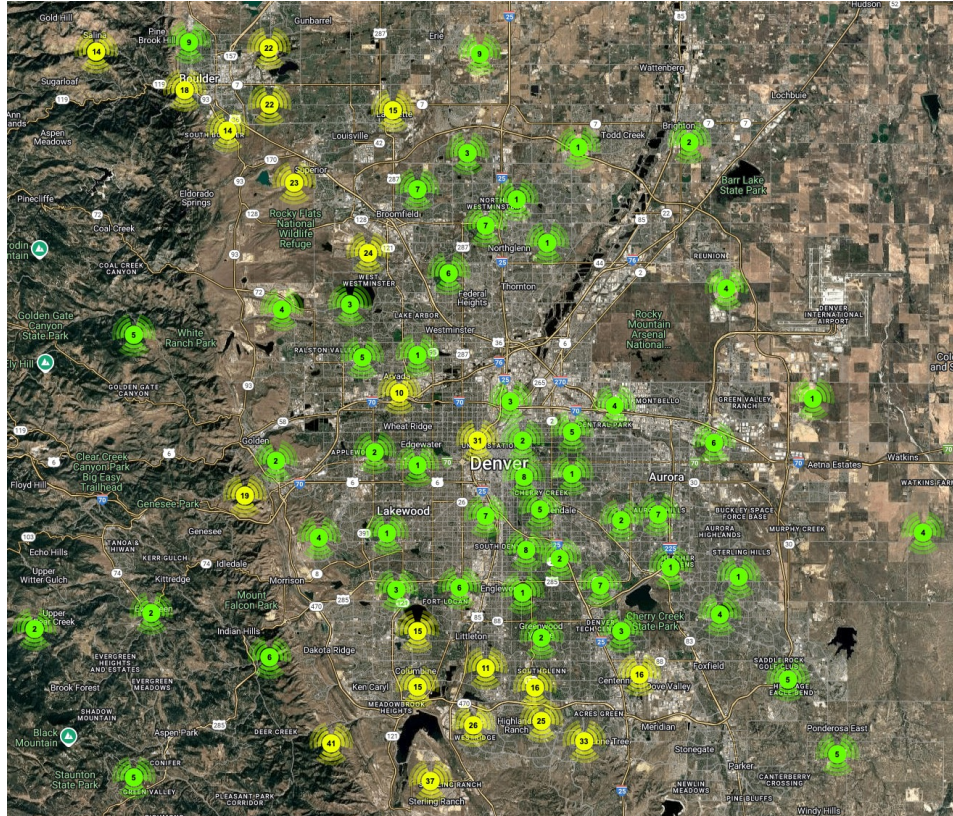


# Rocky Mountain

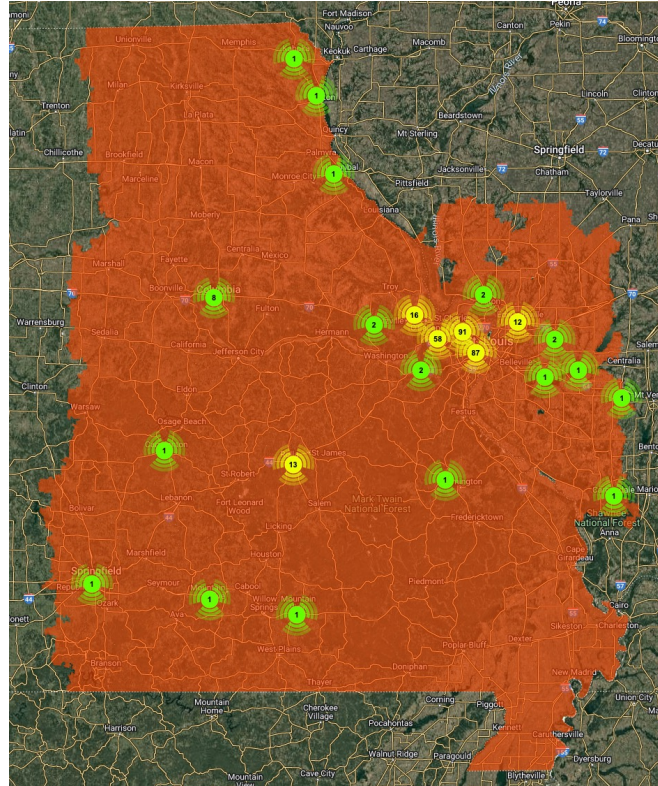




# Rocky Mountain

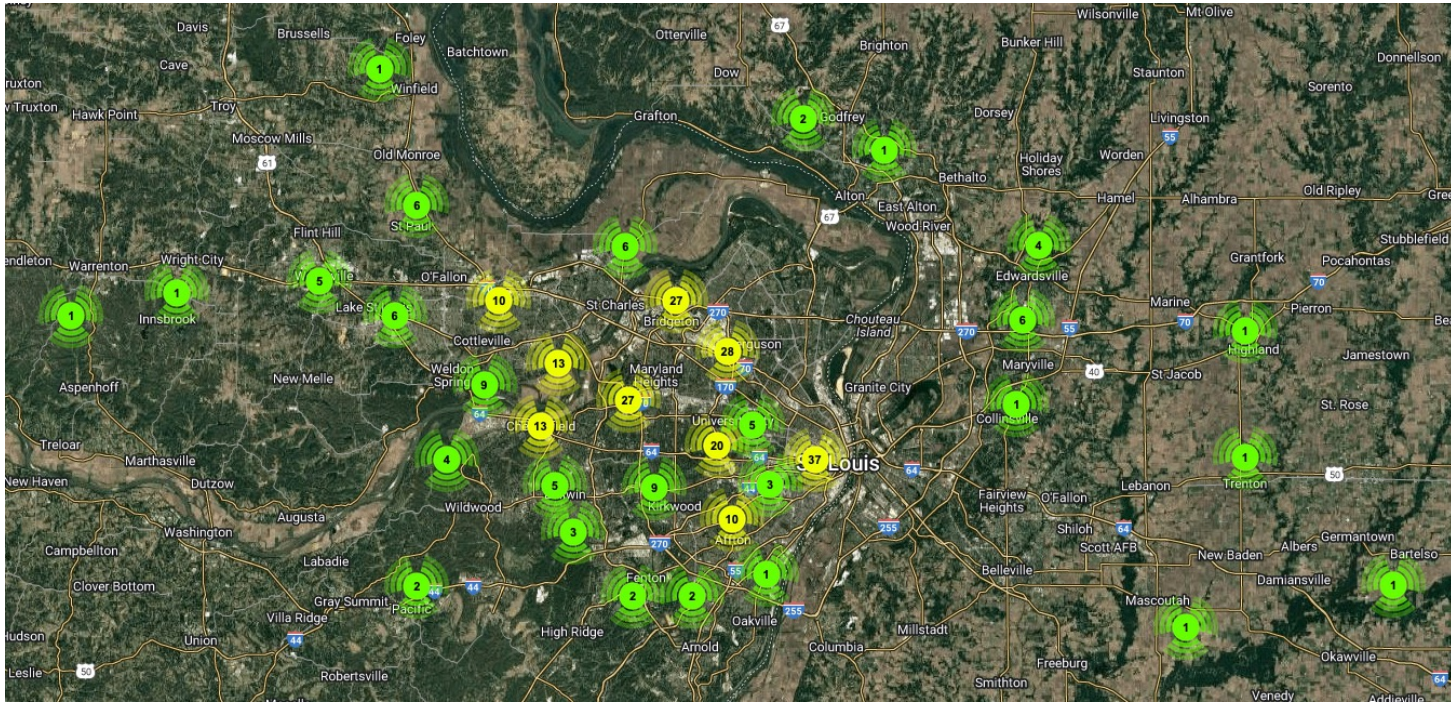


# St Louis



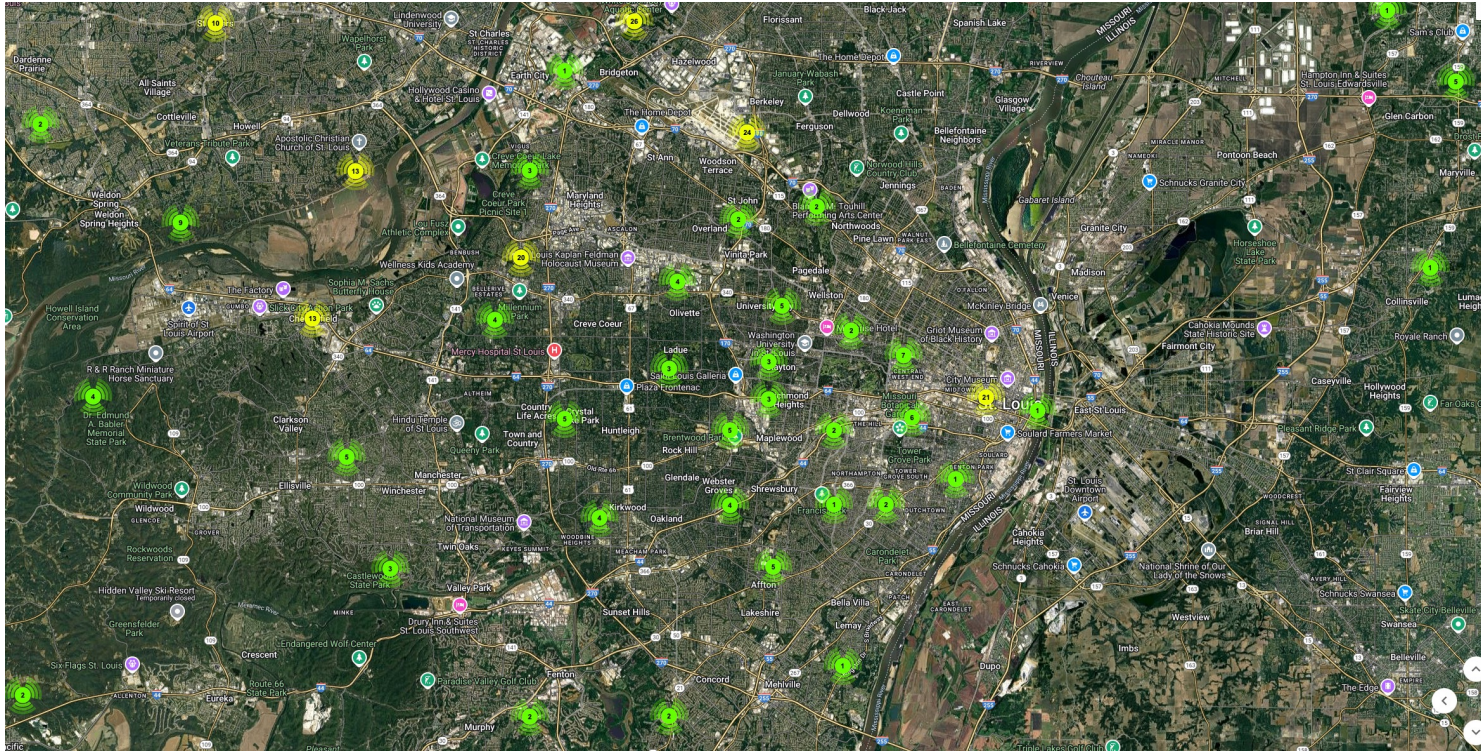


# St Louis



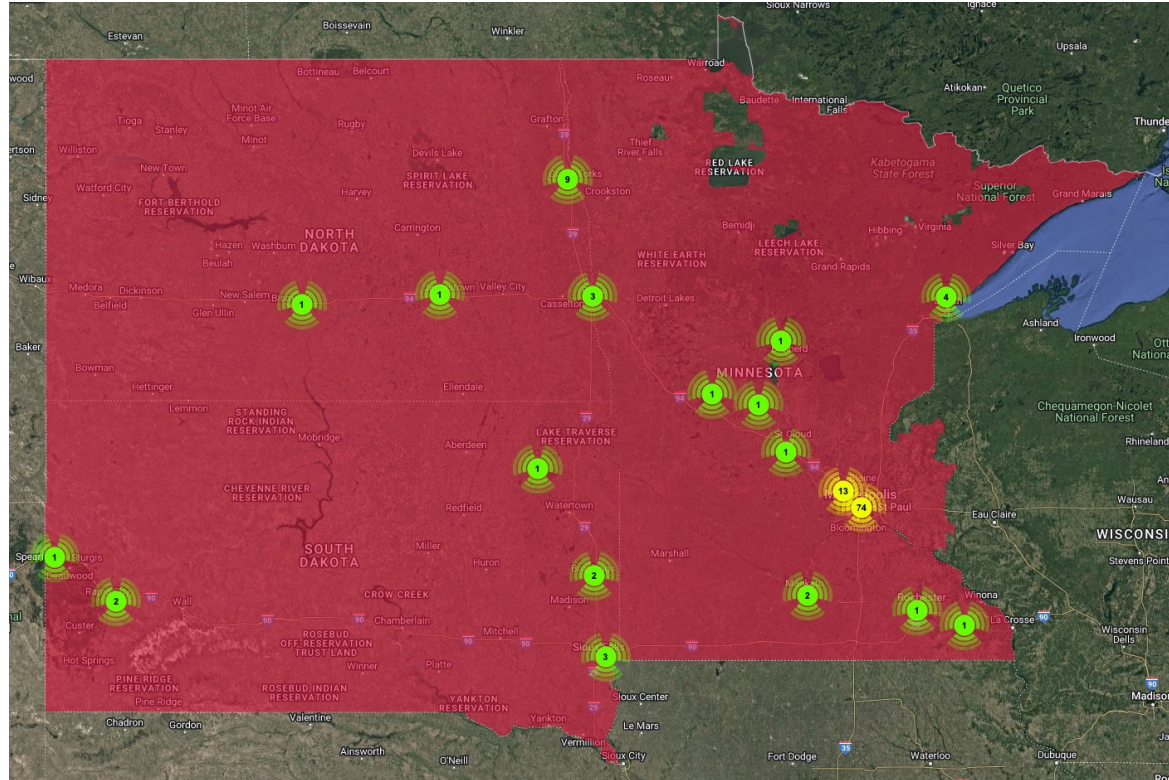


# St Louis

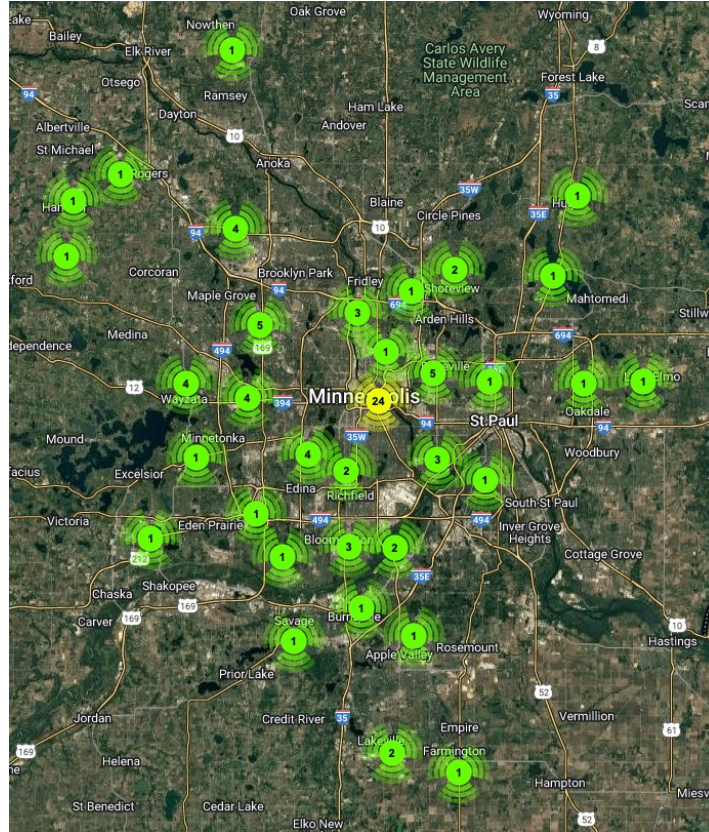




# Twin Cities

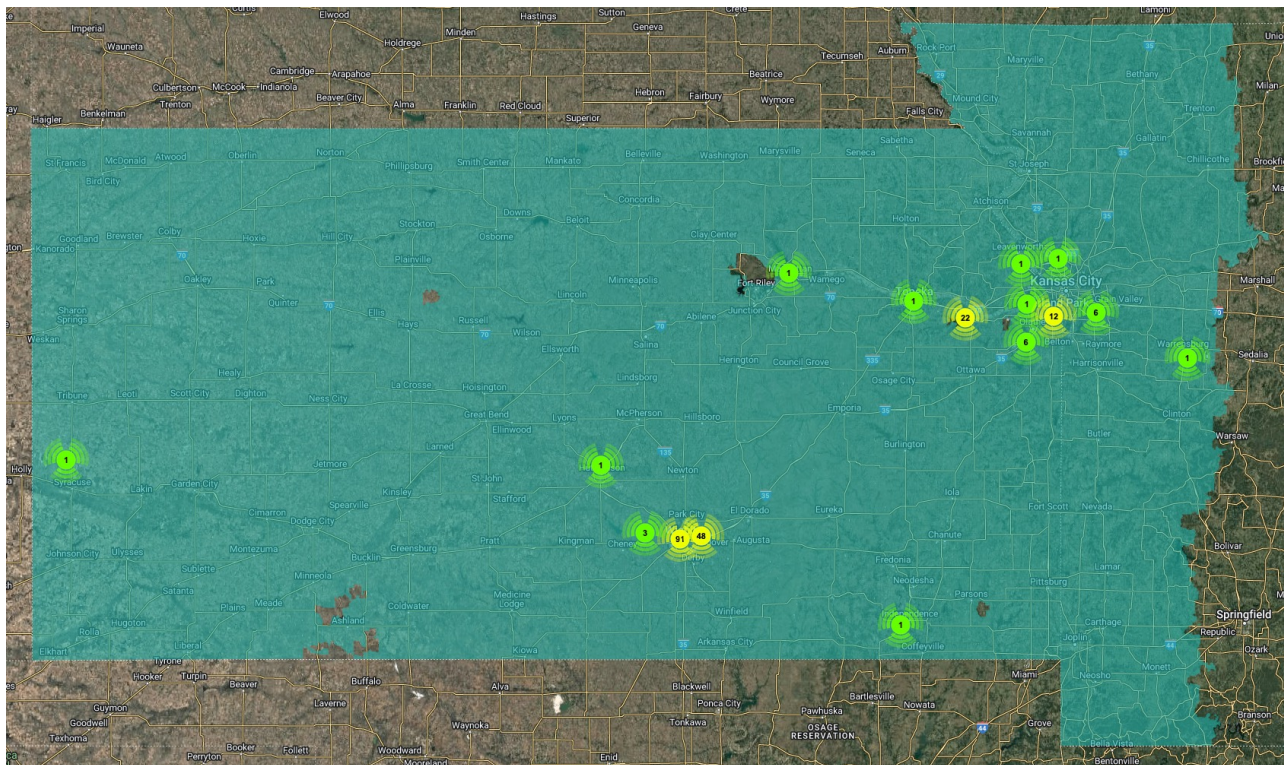


# Twin Cities

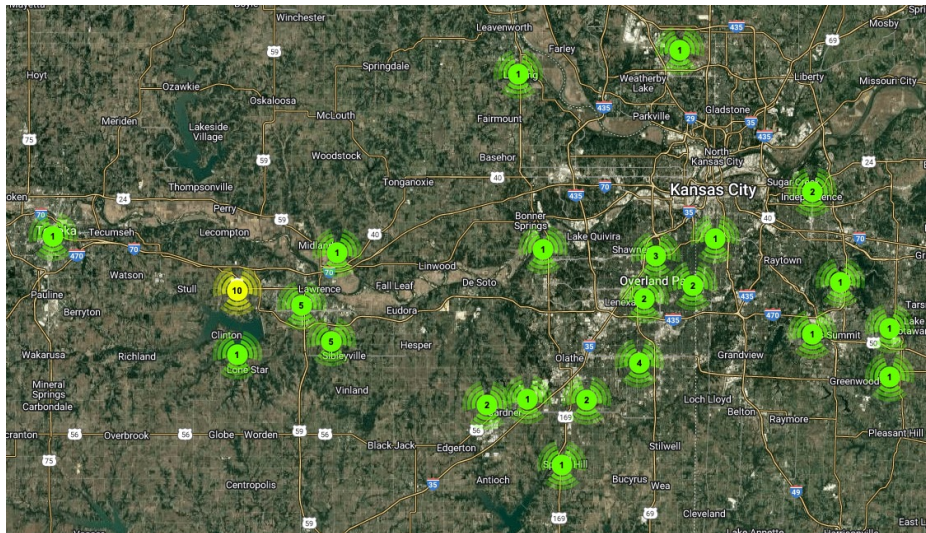
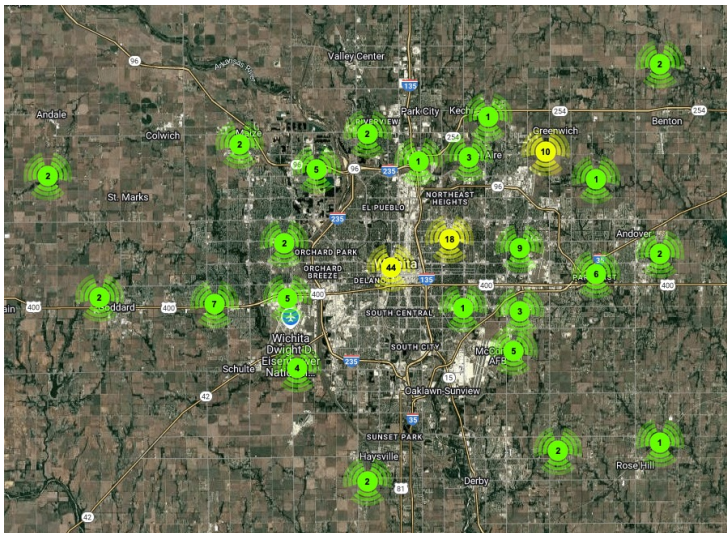




# Wichita



# Wichita





AMERICAN INSTITUTE OF  
AERONAUTICS AND ASTRONAUTICS