



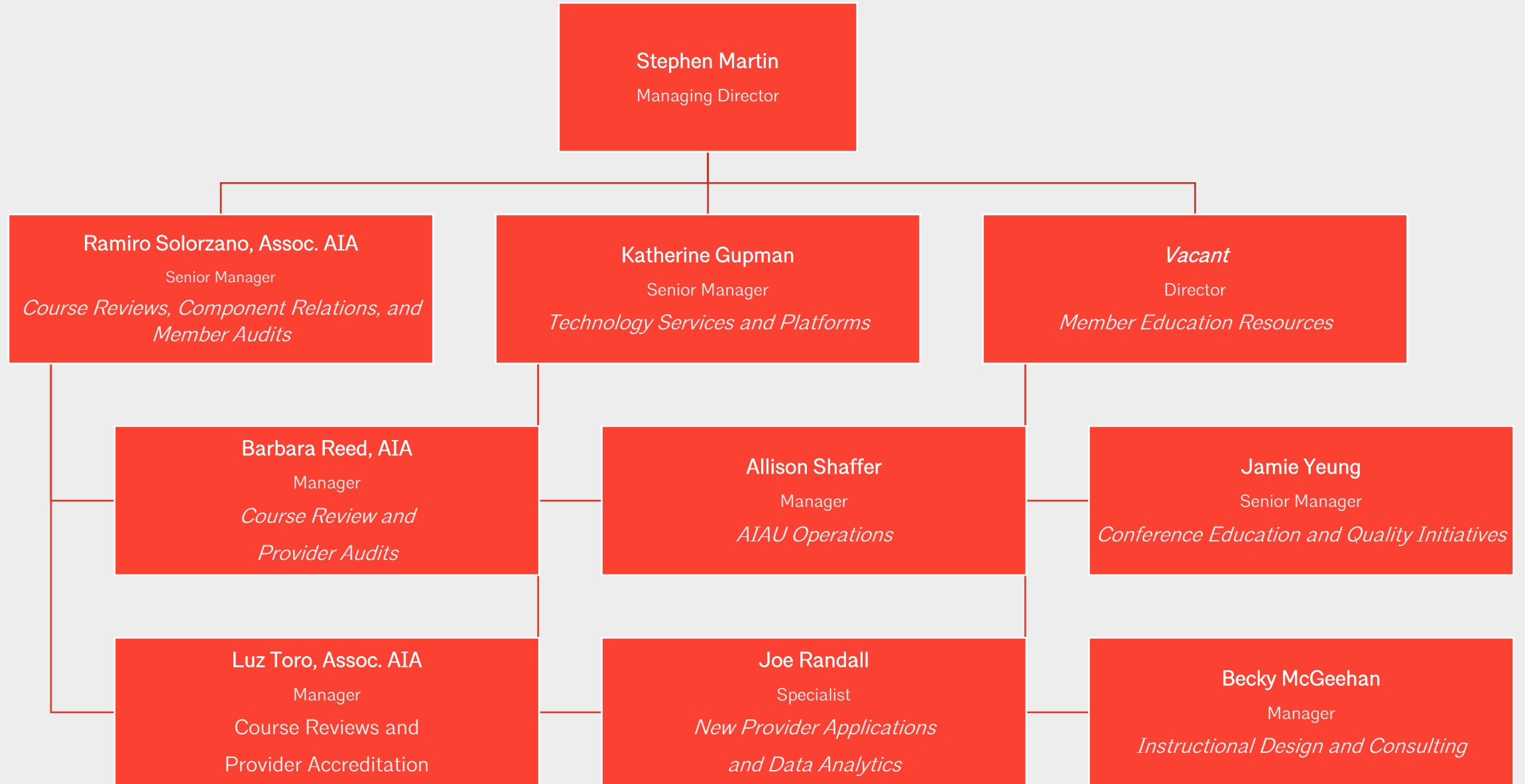
Institute Resource Training

AIA Continuing Education Services

Stephen Martin, Managing Director

Professional Development & Resources

PROFESSIONAL DEVELOPMENT AND RESOURCES



Requirements

MEMBER REQUIREMENTS

Architect Members

- 18 Learning Units, 12 Health, Safety, and Welfare

International Associates

- 18 Learning Units, 12 Health, Safety, and Welfare (2020 and beyond)

AIA CES

AIA STANDARDS FOR CONTINUING EDUCATION PROGRAMS

- Completely revised standards for all AIA CES programs and providers
- *AIA Standards for Continuing Education Programs* (January 1, 2019)

REVISED HSW DEFINITION

Primary intent has not changed

Licensed architects and affiliated design professionals have, in their professional practice, a positive duty to protect the public's health, safety, and welfare. Learning programs must address knowledge intended to protect the health, safety, and welfare of the occupants of the built environment, as defined below:

- Health: Those aspects of professional practice that improve the physical, emotional, and social well-being of occupants, users, and any others affected by buildings and sites.
- Safety: Those aspects of professional practice that protect occupants, users, and any others affected by buildings or sites from harm.
- Welfare: Those aspects of professional practice that enable equitable access, elevate the human experience, encourage social interaction, and benefit the environment

REVISED HSW DEFINITION

Based on NCARB's ARE 5.0 and AXP Divisions:

Practice management: This category focuses on areas related to the management of architectural practice and the details of running a business.

Project management: This category focuses on areas related to the management of architectural projects through execution.

Programming and analysis: This category focuses on areas related to the evaluation of project requirements, constraints, and opportunities.

Project planning and design: This category focuses on areas related to the preliminary design of sites and buildings.

Project development and documentation: This category focuses on areas related to the integration and documentation of building systems, material selection, and material assemblies into a project.

Construction and evaluation: This category focuses on areas related to construction contract administration and post-occupancy evaluation of projects.

TIMELINES AND WHAT'S NEXT

Standards in effect January 1, 2019

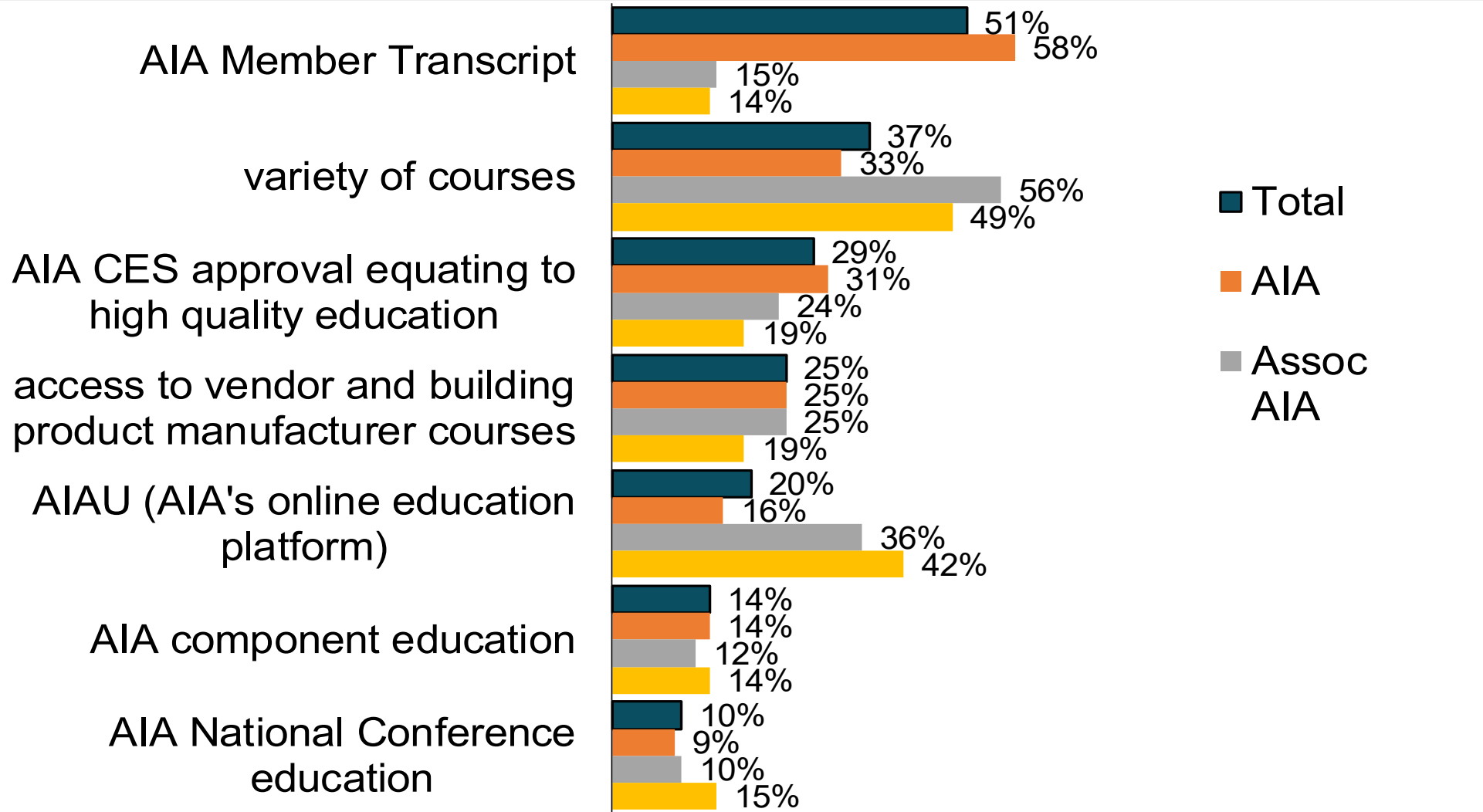
- New courses are being evaluated against the new standards
- Existing courses grandfathered until they expire

Provider accreditation

New provider application

Member CE Survey

THE AIA MEMBER TRANSCRIPT AND THE VARIETY OF COURSES ARE THE TWO ASPECTS OF AIA'S CONTINUING EDUCATION IMPORTANT TO THE MOST.



Which two of the listed aspects of AIA's continuing education are most important to you?

2017 Member CE Needs Survey

base: all 1,427 respondents (up to two answers allowed)

WHEN ASKED TO LIST OTHER ASPECTS IMPORTANT TO THEM RELATED TO AIA'S CE SERVICES, RESPONDENTS MOST OFTEN MENTIONED THAT THEY WANT TIMELY/CURRENT INFO.

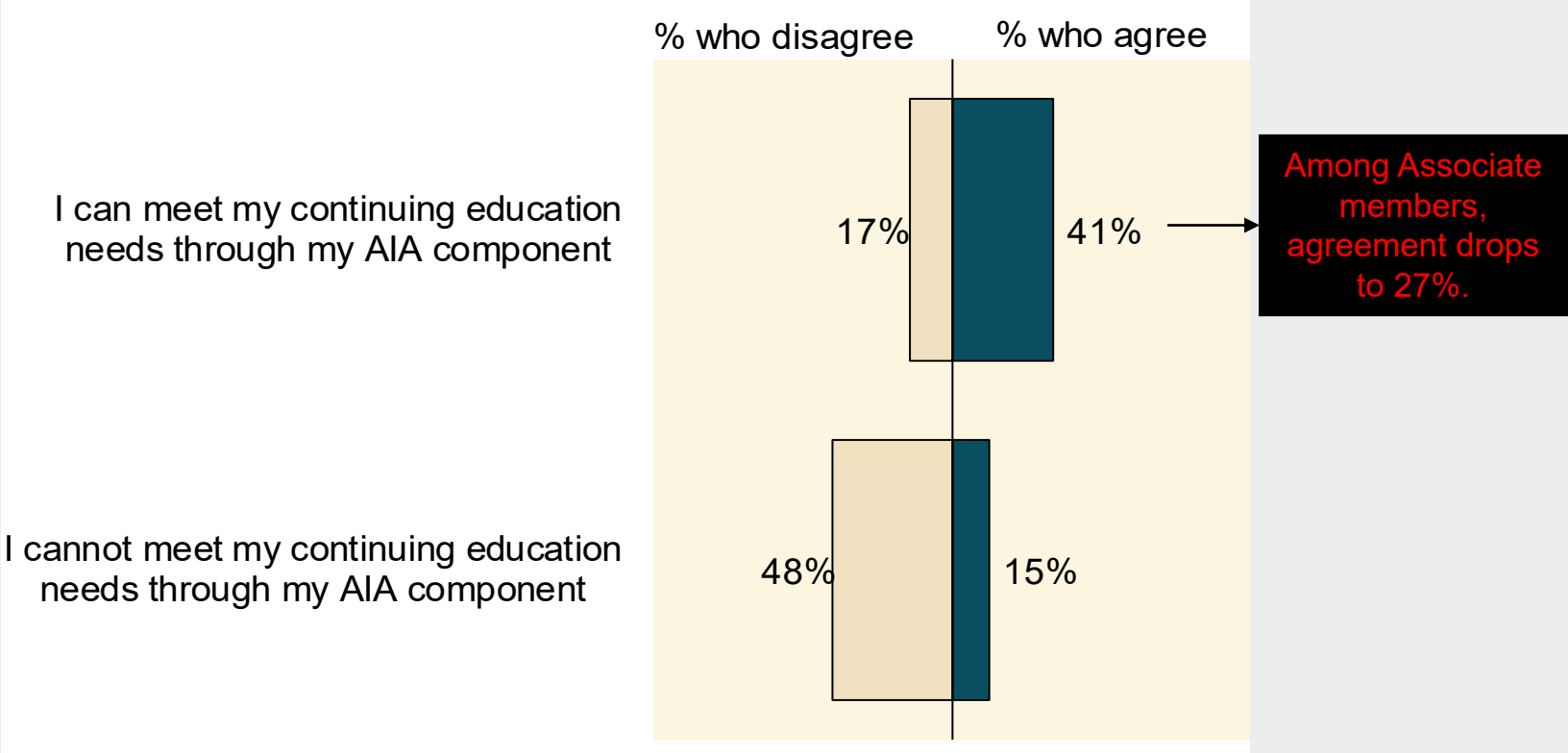
Top Mentions Only (%s based on those providing a comment)	
up to date: latest industry info, new materials, technology innovations, current codes	15%
relevance: provide useful info/education valuable in my practice/real world	9%
ease: flexibility of access/convenience to use/time involved	8%
cost: affordability/free	7%
quality education: detailed/high level presentation content/presenters	7%
credits: recognition/reporting valid credits/compatible with other organizations	5%
education in person: through local sources/conferences at regional level	4%
online: remote access/webinars	4%
maintaining/meeting license requirements	4%

What other aspects are important to you related to
AIA's continuing education services?

2017 Member CE Needs Survey

base: 720 respondents answering (first open-ended response coded)

41% AGREE THAT THEY CAN MEET THEIR CE NEEDS THROUGH THEIR AIA COMPONENT. FAR FEWER DISAGREE/FEEL THEY CANNOT.



What is your level of agreement with each of these additional statements about continuing education?

2017 Member CE Needs Survey

base: 688 or 739 respondents seeing each statement

MATERIALS, TECHNOLOGY, AND ENERGY ARE THE TOPICS OF IMPORTANCE TO THE MOST FOR CE EDUCATION/TRAINING.

% rating each important	
Materials	87%
Technology	85%
Energy	82%
Sustainability	78%
Business of architecture	77%
Accessibility and inclusive design	76%
Resilience	72%
Design for health	70%
Leadership	69%
Research	66%
Preservation	57%
Education facilities	56%
Urban planning and design	54%
Residential	45%
Health care facilities	42%
Global markets	37%

Detailed descriptions of each topic were provided to the survey respondents.

This series of questions is very important to AIA's planning. Please consider each carefully.
How important are the following topics to you for continuing education and training?

IMPORTANCE OF CE TOPICS VARIES BY MEMBER TYPE.

% rating each important	MEMBER TYPE		
	US Licensed Architect	Associate	Int'l Associate
Materials	87%	81%	92%
Technology	85%	86%	90%
Energy	82%	82%	84%
Sustainability	77%	81%	90%
Business of architecture	78%	76%	79%
Accessibility and inclusive design	75%	80%	86%
Resilience	71%	76%	76%
Design for health	68%	77%	82%
Leadership	68%	72%	75%
Research	64%	67%	81%
Preservation	55%	64%	76%
Education facilities	53%	66%	75%
Urban planning and design	50%	66%	80%
Residential	42%	50%	75%
Health care facilities	39%	50%	73%
Global markets	33%	49%	70%

This series of questions is very important to AIA's planning. Please consider each carefully.
How important are the following topics to you for continuing education and training?

SATISFACTION WITH THE QUALITY OF AIA-APPROVED COURSES AVAILABLE FOR EACH TOPIC AREA IS MODERATE.

% satisfied with the quality of AIA-approved courses available for each	
Materials	64%
Sustainability	61%
Accessibility and inclusive design	58%
Energy	56%
Technology	52%
Design for health	47%
Education facilities	46%
Business of architecture	43%
Resilience	43%
Health care facilities	43%
Urban planning and design	42%
Leadership	41%
Research	40%
Preservation	40%
Residential	40%
Global markets	31%

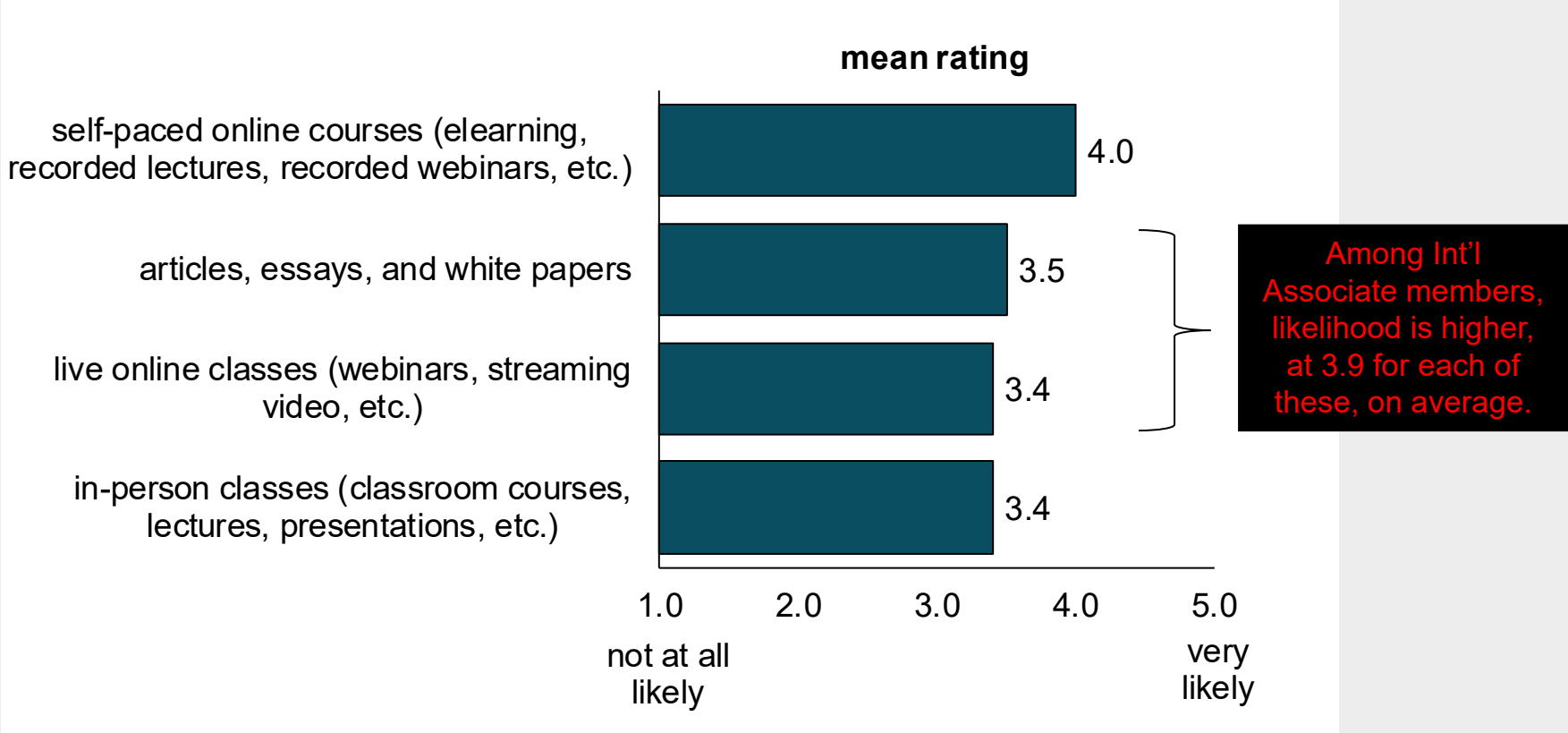
How satisfied are you with the quality of AIA-approved courses available for each topic area?

THE QUALITY OF AIA-APPROVED COURSES AVAILABLE FOR EACH TOPIC AREA IS RATED MUCH LOWER THAN THE IMPORTANCE IN MANY CASES, AND THERE ARE SOME DIFFERENCES IN THE GAPS BY MEMBER TYPE.

Satisfaction Gaps % rating important subtracted from % satisfied	MEMBER TYPE			
	TOTAL	US Licensed		
		Architect	Associate	Int'l Associate
Materials	-23	-24	-11	-17
Technology	-33	-34	-29	-18
Energy	-26	-27	-21	-11
Sustainability	-17	-18	-17	-12
Business of architecture	-34	-37	-29	-13
Accessibility and inclusive design	-18	-18	-20	-12
Resilience	-29	-30	-28	-14
Design for health	-23	-23	-26	-13
Leadership	-28	-30	-19	-7
Research	-26	-27	-16	-15
Preservation	-17	-18	-12	-17
Education facilities	-10	-10	-10	-4
Urban planning and design	-12	-12	-12	-10
Residential	-5	-6	-1	-5
Health care facilities	1	1	3	-6
Global markets	-6	-7	-8	-5

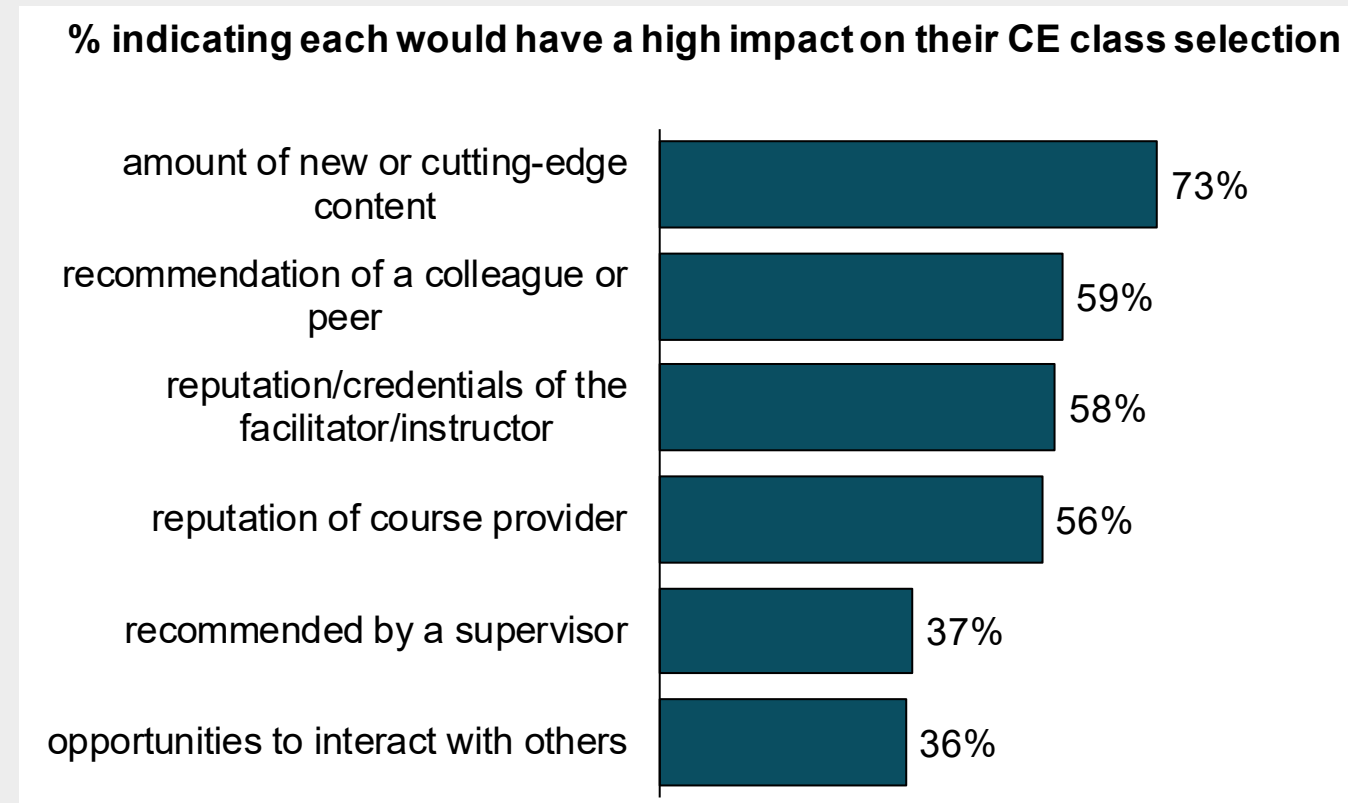
A large negative gap indicates improvement may be warranted to better meet needs.

OF THE FOUR OPTIONS, SELF-PACED ONLINE COURSES IS THE MOST LIKELY CE/TRAINING FORMAT TO BE USED BY RESPONDENTS IF AVAILABLE FROM AIA.



How likely would you be to use each of the following continuing education/training formats if they were available from AIA?

COMPARED WITH THE OTHER LISTED OPTIONS, THE AMOUNT OF NEW/CUTTING-EDGE CONTENT WOULD HAVE A HIGH IMPACT ON CE CLASS SELECTION FOR THE MOST RESPONDENTS.



How much of an impact do the following items have on your selection of continuing education classes?

2017 Member CE Needs Survey

base: all 1,427 respondents

AMONG THE ORGANIZATIONS LISTED, AIA COMPONENTS WERE SELECTED BY THE MOST RESPONDENTS FOR PROVIDING THE BEST EDUCATION/TRAINING WITH REGARD TO TOPICS SPECIFIC TO THEIR STATE/LICENSING REQUIREMENTS.

	AIA Nat'l	AIA components	bldg product mfrs	other orgs	not sure
course topics specific to my state licensing requirements	12%	32%	13%	12%	32%
quality of courses	20%	20%	16%	11%	32%
quality of instructors	18%	17%	15%	8%	41%

In your opinion, which of the following organizations provides the best education and training with regard to the following elements?

**BUILDING PRODUCT MANUFACTURERS WERE SELECTED BY THE MOST RESPONDENTS FOR PROVIDING THE BEST EDUCATION/
TRAINING WITH REGARD TO CUTTING-EDGE/INNOVATIVE TOPICS/CONTENT.**

	AIA Nat'l	AIA components	bldg product mfrs	other orgs	not sure
course topics specific to my specialty or professional development interests	17%	20%	23%	14%	26%
cutting-edge/innovative topics and content	14%	9%	37%	10%	30%
advanced coursework	17%	14%	9%	15%	46%

In your opinion, which of the following organizations provides the best education and training with regard to the following elements?

2017 Member CE Needs Survey

base: all 1,427 respondents

How do I do this?