

# Leveling the Playing Field for ELL Students:

*How Assistive Technology  
Plays a Pivotal Role*



# Speakers



**Ginger Dewey**  
Educational Development Manager  
**ReadSpeaker**



**Marisha Marks**  
Education Technology | Instructional Designer  
**Springfield Technical Community College**

# Tell Me About ReadSpeaker



Text-to-Speech company that offers **over 245 voices** in **68 different languages**



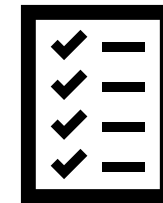
Used by **over 15K clients** globally



**Helps everyone,** not just a few!



Products are **easy** to implement and use! **Just click and listen!**



Provides **several accessibility tools** and is **compatible** with many **proctoring software solutions**

# Text-to-Speech: Who Benefits?

- **Every learner has favored methods** for obtaining, comprehending, and retaining information.
- Text to speech technologies **allow learners to listen to and better see** course material, - increasing the accessibility of online course text.
- This can further improve access by **increasing availability to all who access an online system.**



## ENGAGEMENT

Comprehension  
World Languages  
Teaching and learning differently  
Universal Design for Learning  
Vocal assistance for forms  
Bi-modal presentation  
Online learners  
PTSD



## ACCESSIBILITY

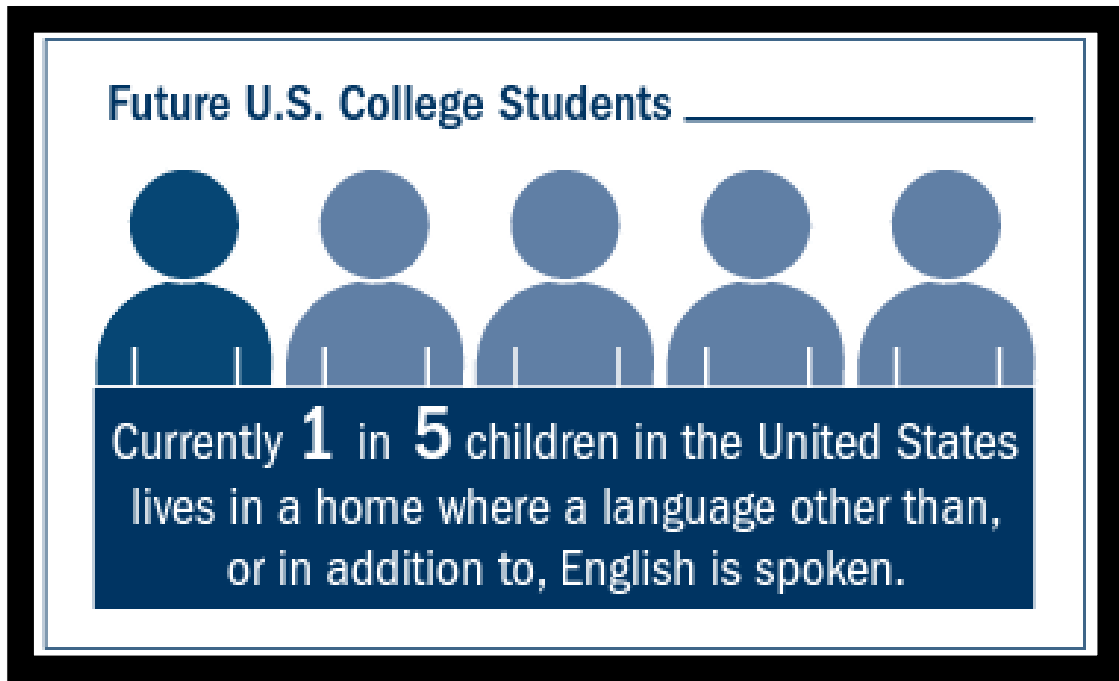
20% of the population with:  
Limited literacy skills  
Visual impairments  
Learning disabilities  
Dyslexia  
ELL



## CONVENIENCE

Mobile  
Usability  
Learning on-the-go  
Busy adult and part-time learners  
who need to multitask  
Personal preference  
Learners

# ELL Statistics



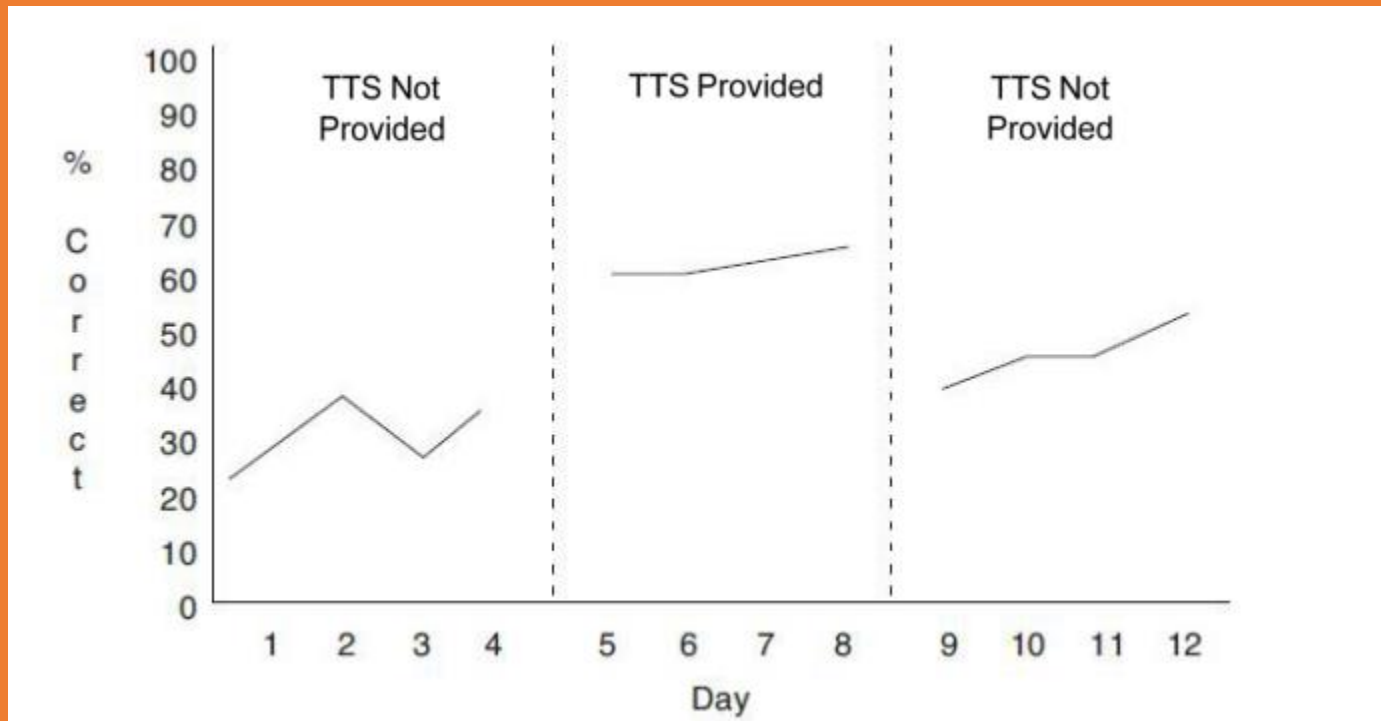
[Source](#)

“...within 2 years of high school graduation, almost half of EIs (47%) had not enrolled in college, and only 18% had advanced to 4-year colleges, compared with more than twice the proportion of monolingual English-speaking students...”

[Source](#)

**Text to speech supports the individual test taker,  
the teacher giving the assessment, and  
the organization that is required to provide accommodations.  
AND IT SUCCEEDS.**

**Results for assessments taken with text-to-speech accommodations are  
systematically better than those without.**



SOURCE

**Describe the student  
demographics at  
Springfield Technical  
Community College?**

**How do you guide your  
faculty to help your  
ESL/ELL students?**

**What challenges do you  
feel that ESL or ELL  
students regularly  
encounter?**

**What led Springfield  
Technical Community  
College to select  
ReadSpeaker?**

**Outside of text-  
to-speech, what  
other tools do  
faculty guide the  
ELL/ESL students  
to use?**

**For those institutions that are just beginning this journey what tips would you give them in selecting a TTS program for their students?**

# Free Demo Account



**FREE DEMO ACCOUNT!**  
**(No strings attached!)**

**Want to “kick the tires”  
with your material,  
in your LMS environment?**

**Send me an email with the following information and we can set you up quickly!**

- Your Name / Institution Name
  - LMS Admin
  - LMS URL
- What Languages You Want



**Ginger Dewey** – [ginger.dewey@readspeaker.com](mailto:ginger.dewey@readspeaker.com)

**Paul Stisser** – [paul.stisser@readspeaker.com](mailto:paul.stisser@readspeaker.com)

[www.readspeaker.com/education/](http://www.readspeaker.com/education/)

**Follow us on Twitter and LinkedIn  
for more information!**